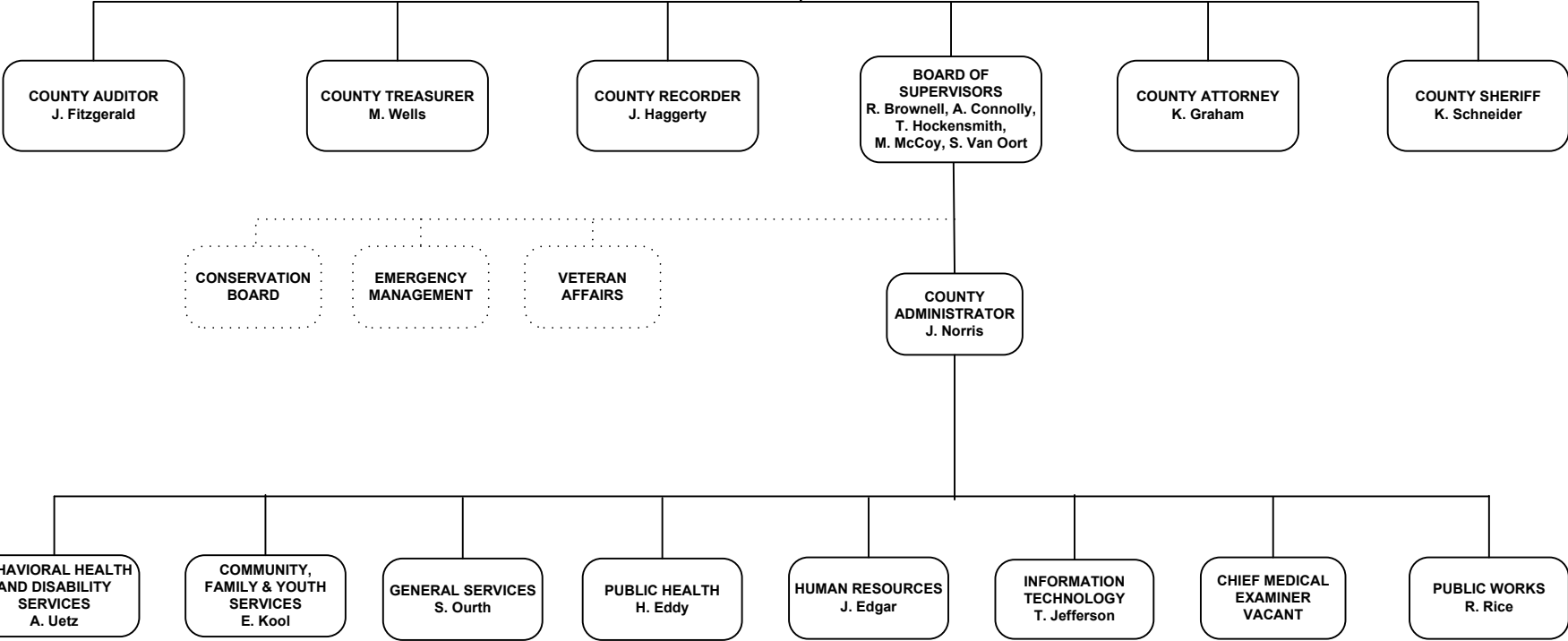


**COUNTY CONFERENCE BOARD**  
 Polk County Board of Supervisors,  
 representative from Board of Education-  
 each school district, all Mayors of cities.

**COUNTY ASSESSOR**

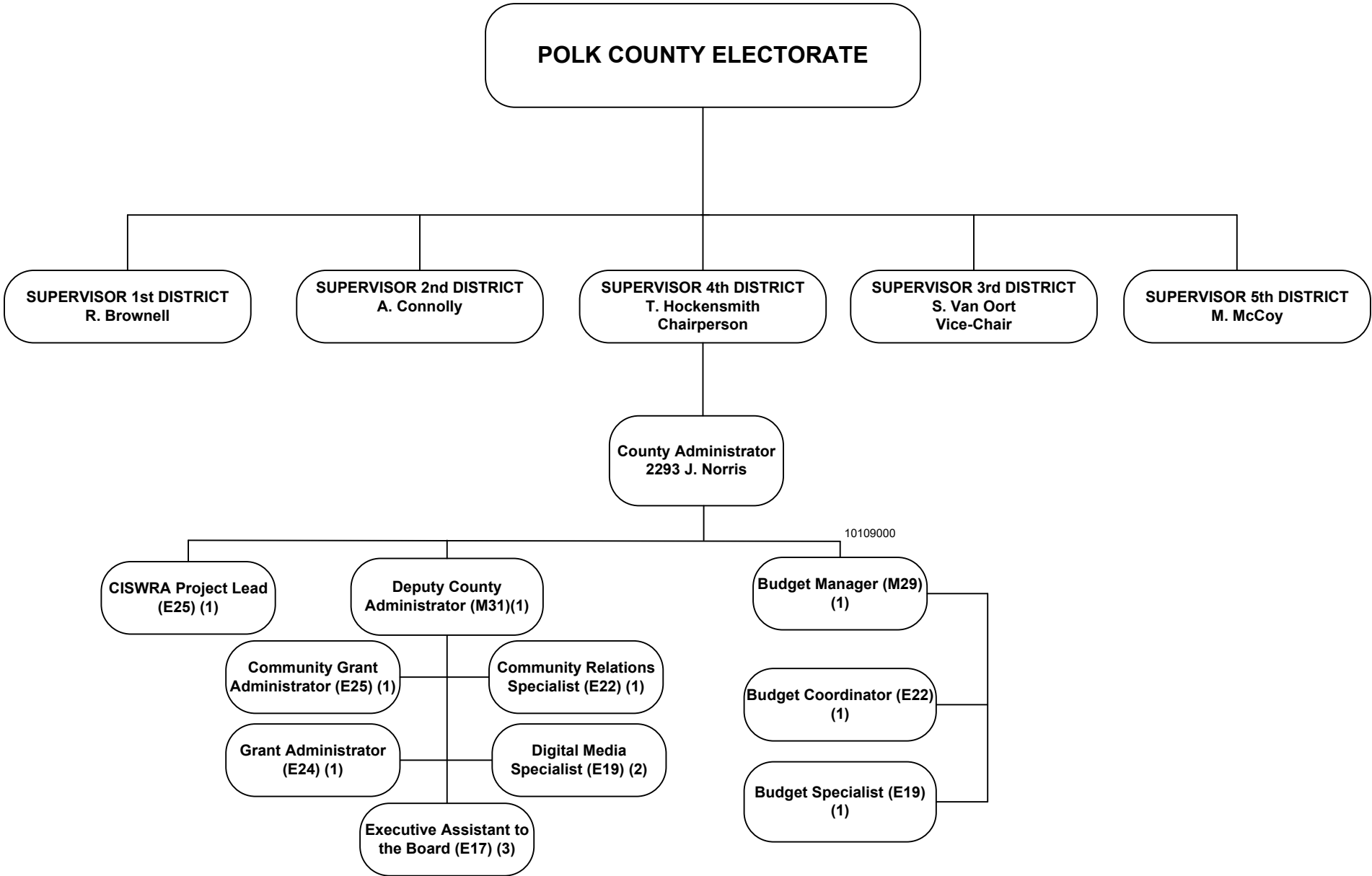
# POLK COUNTY ORGANIZATION

**POLK COUNTY ELECTORATE**

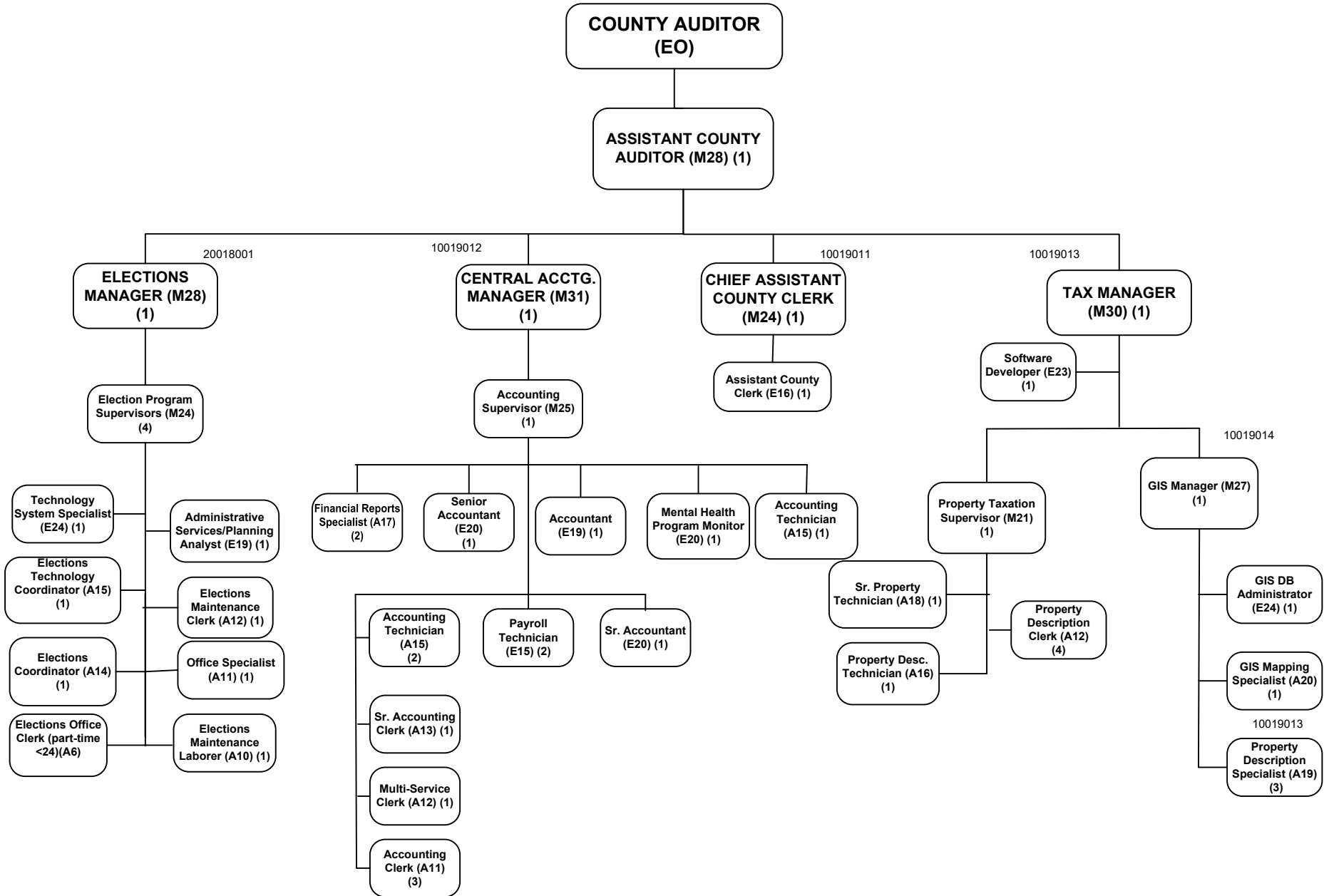


Note: Dotted line indicates Quasi- County agency with strong budgetary relationship to the Board of Supervisors; Department Heads report to their respective Boards/Commissions; budgets/plans are submitted to the Board of Supervisors.

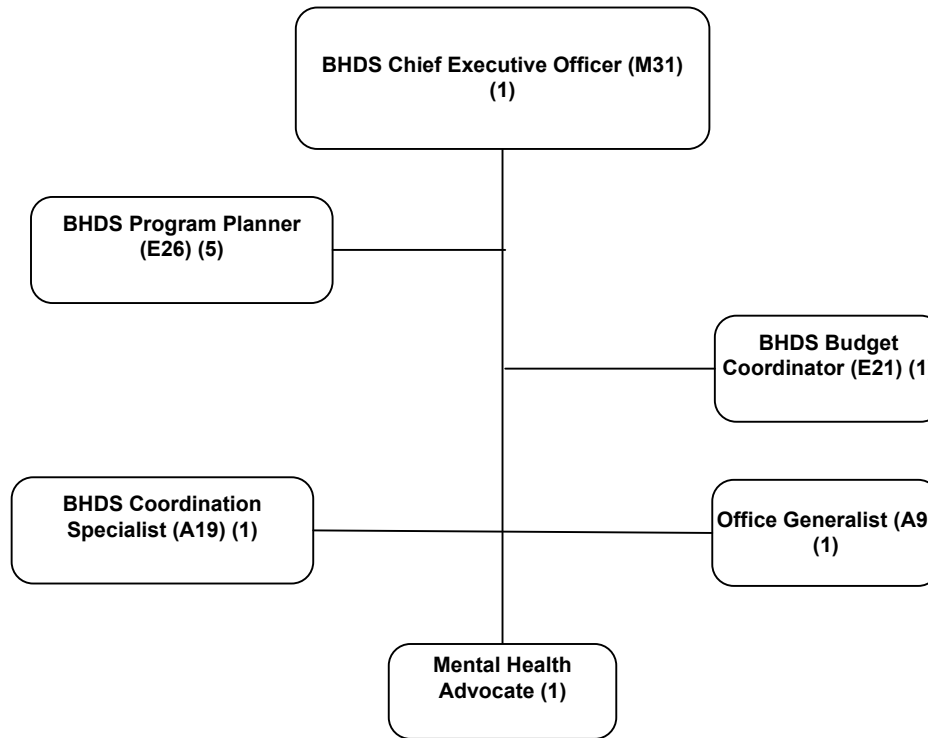
**POLK COUNTY  
BOARD OF SUPERVISORS OFFICE**



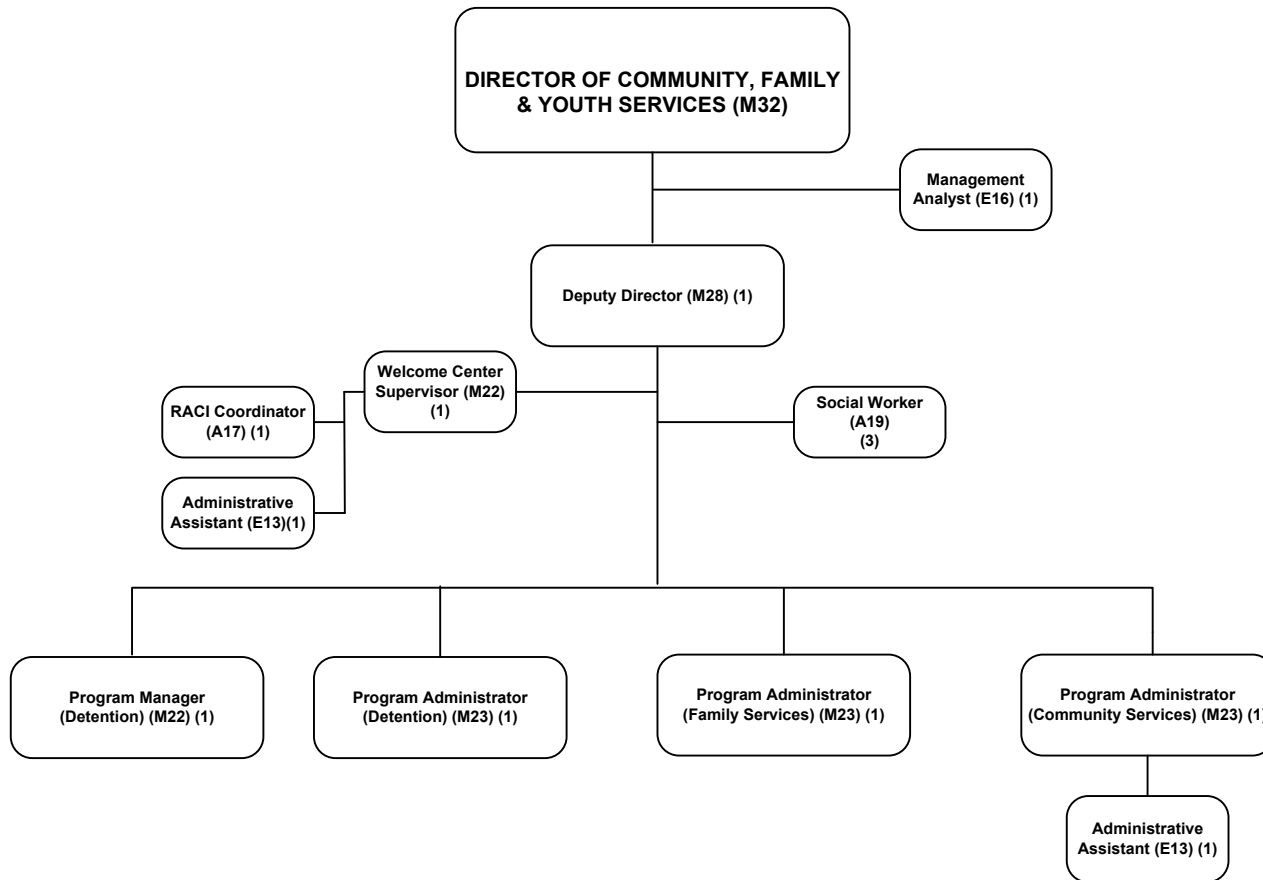
# POLK COUNTY COUNTY AUDITOR'S OFFICE



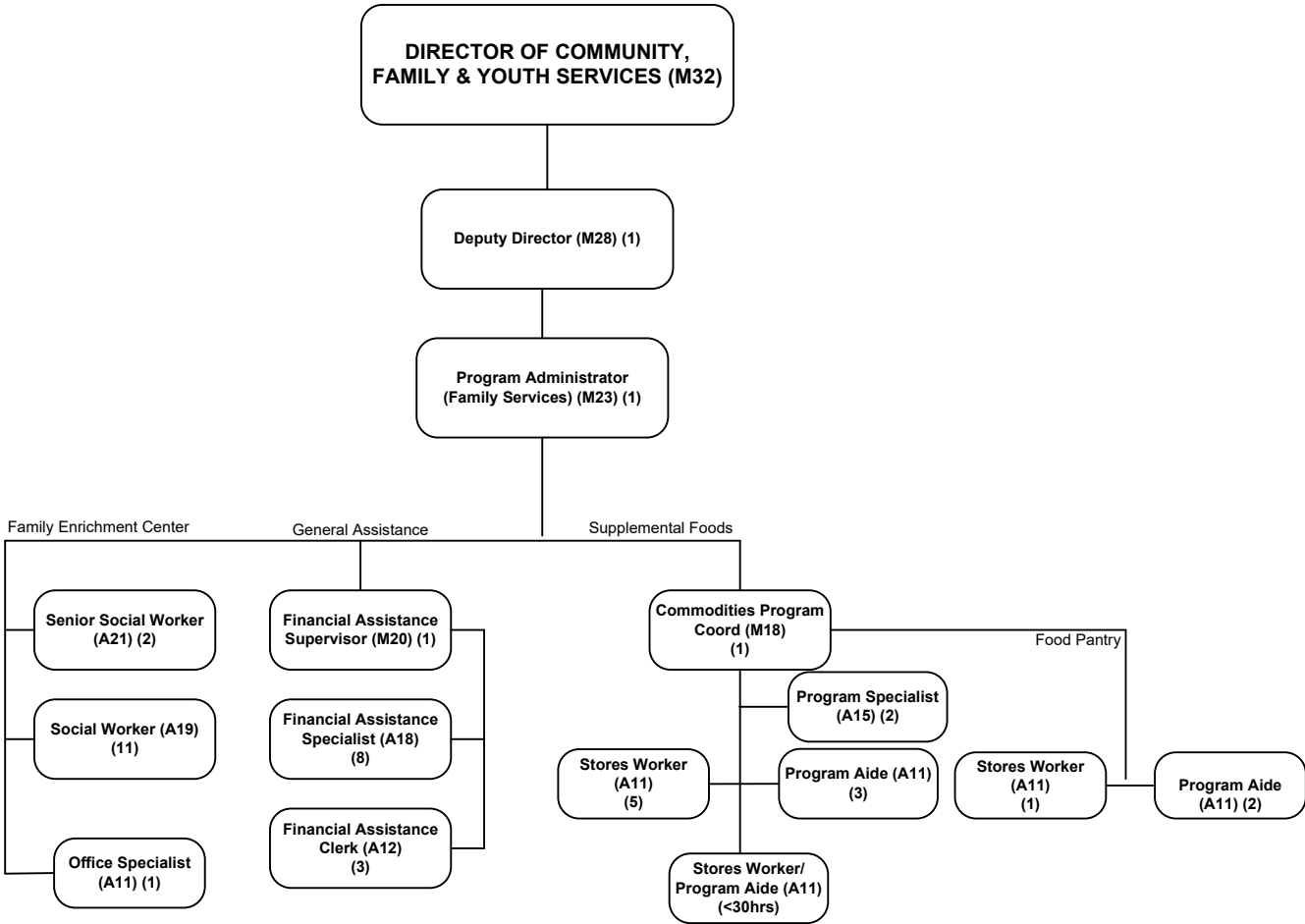
## BEHAVIORAL HEALTH AND DISABILITY SERVICES (BHDS) DEPARTMENT



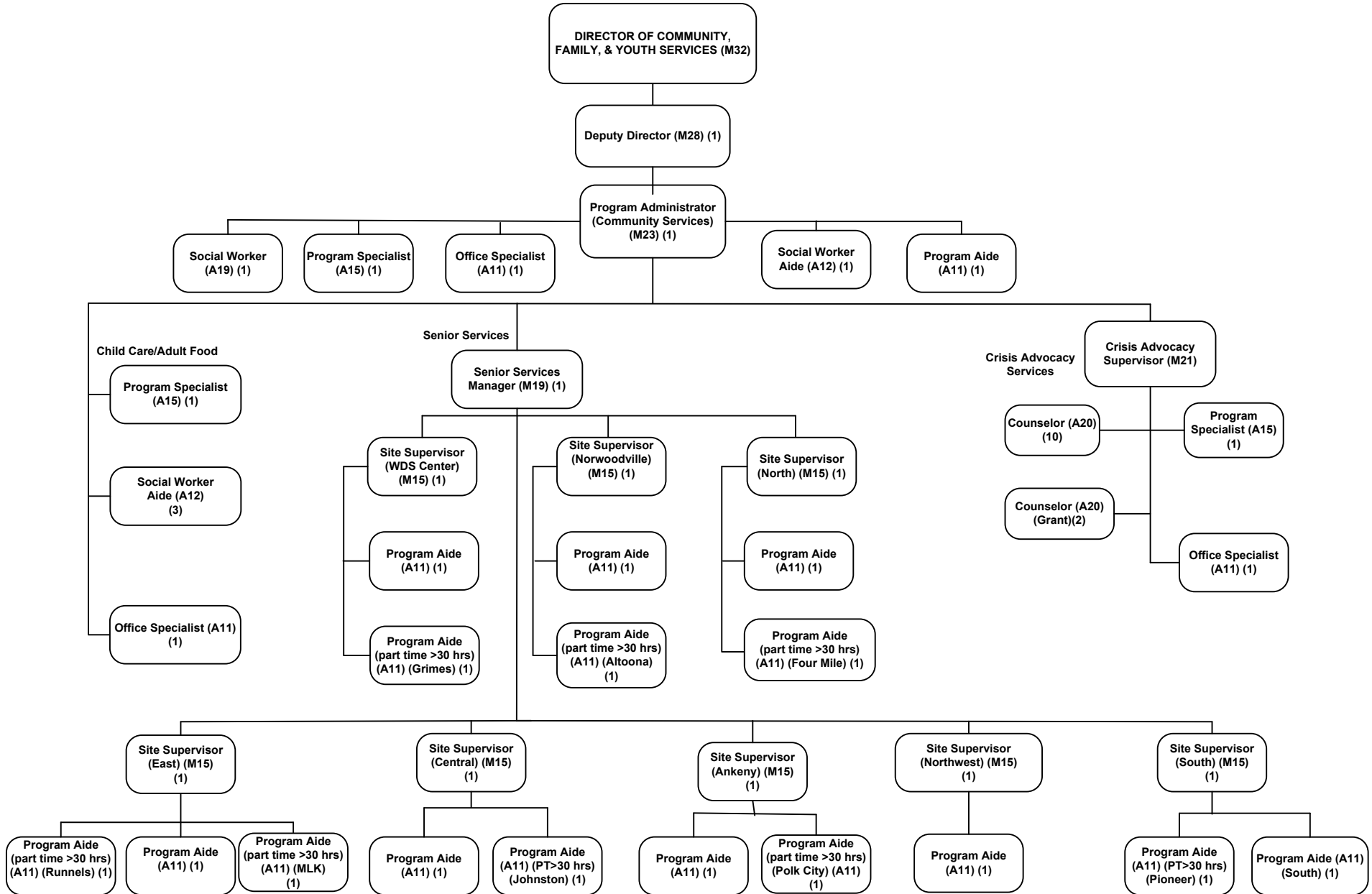
**POLK COUNTY  
DEPARTMENT OF COMMUNITY, FAMILY, & YOUTH SERVICES  
ADMINISTRATIVE DIVISION**



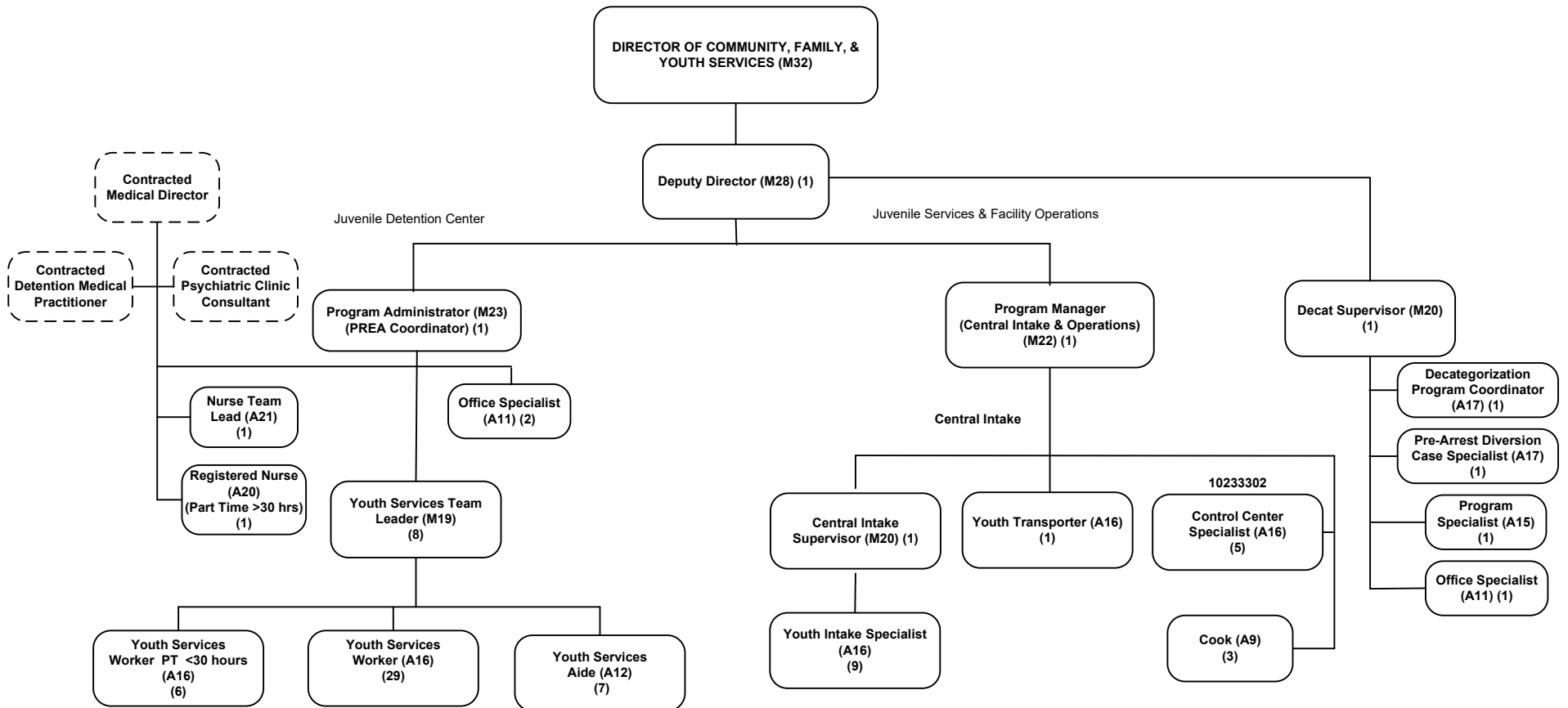
**POLK COUNTY  
DEPARTMENT OF COMMUNITY, FAMILY, & YOUTH SERVICES  
FAMILY SERVICES DIVISION**



**POLK COUNTY  
DEPARTMENT OF COMMUNITY, FAMILY, & YOUTH SERVICES  
COMMUNITY SERVICES DIVISION**

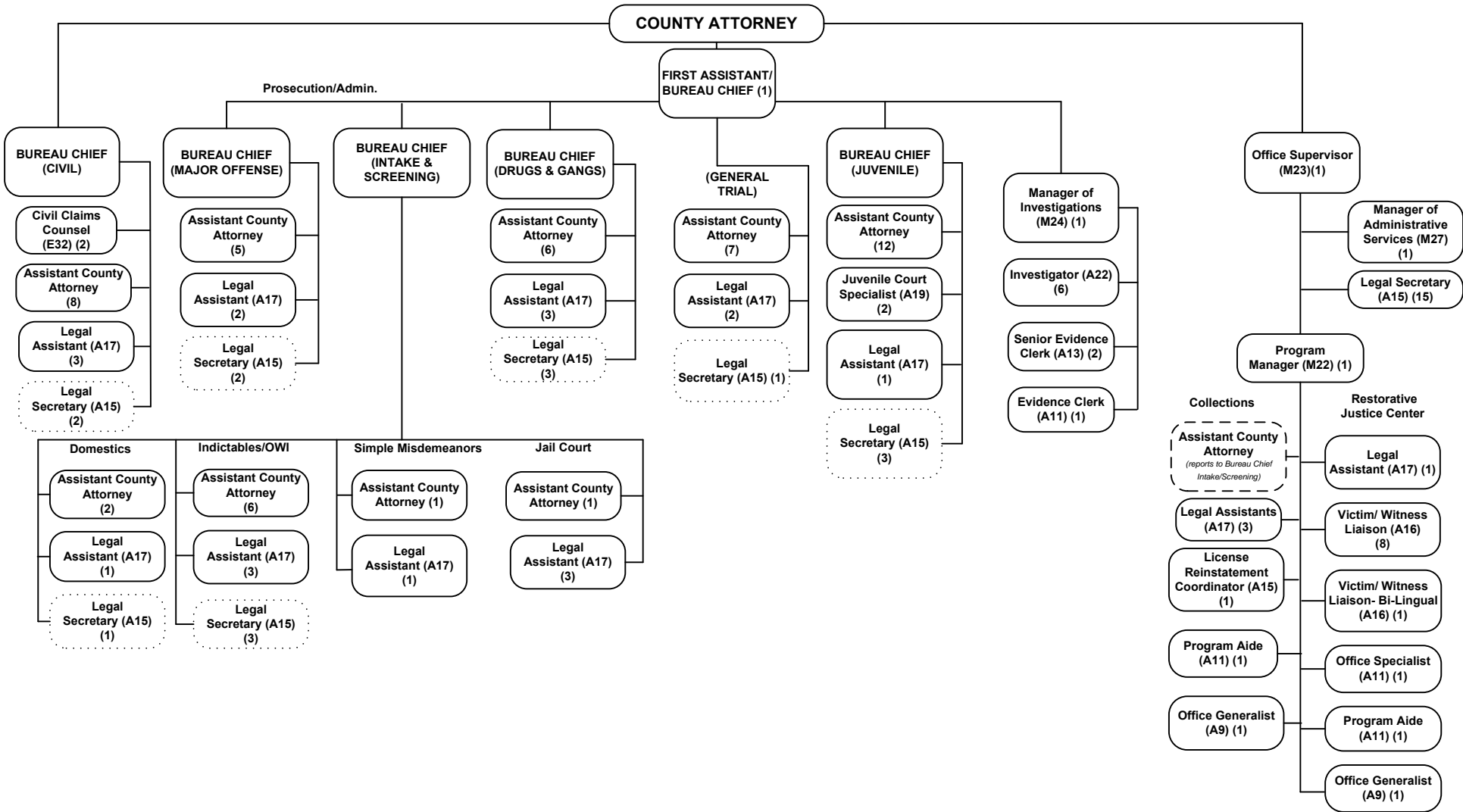


**POLK COUNTY  
DEPARTMENT OF COMMUNITY, FAMILY, & YOUTH SERVICES  
YOUTH SERVICES DIVISION**



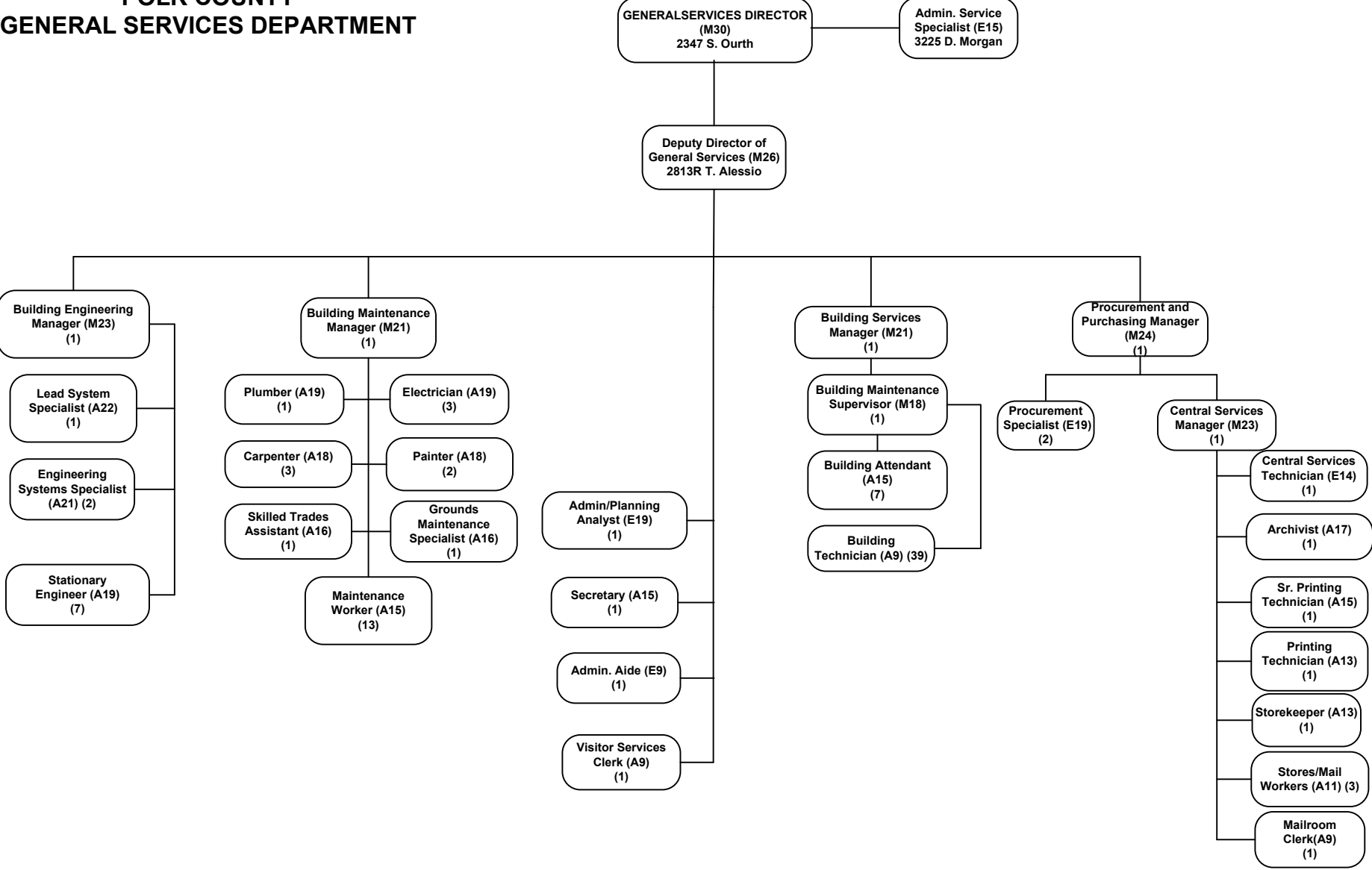


# POLK COUNTY COUNTY ATTORNEY'S OFFICE

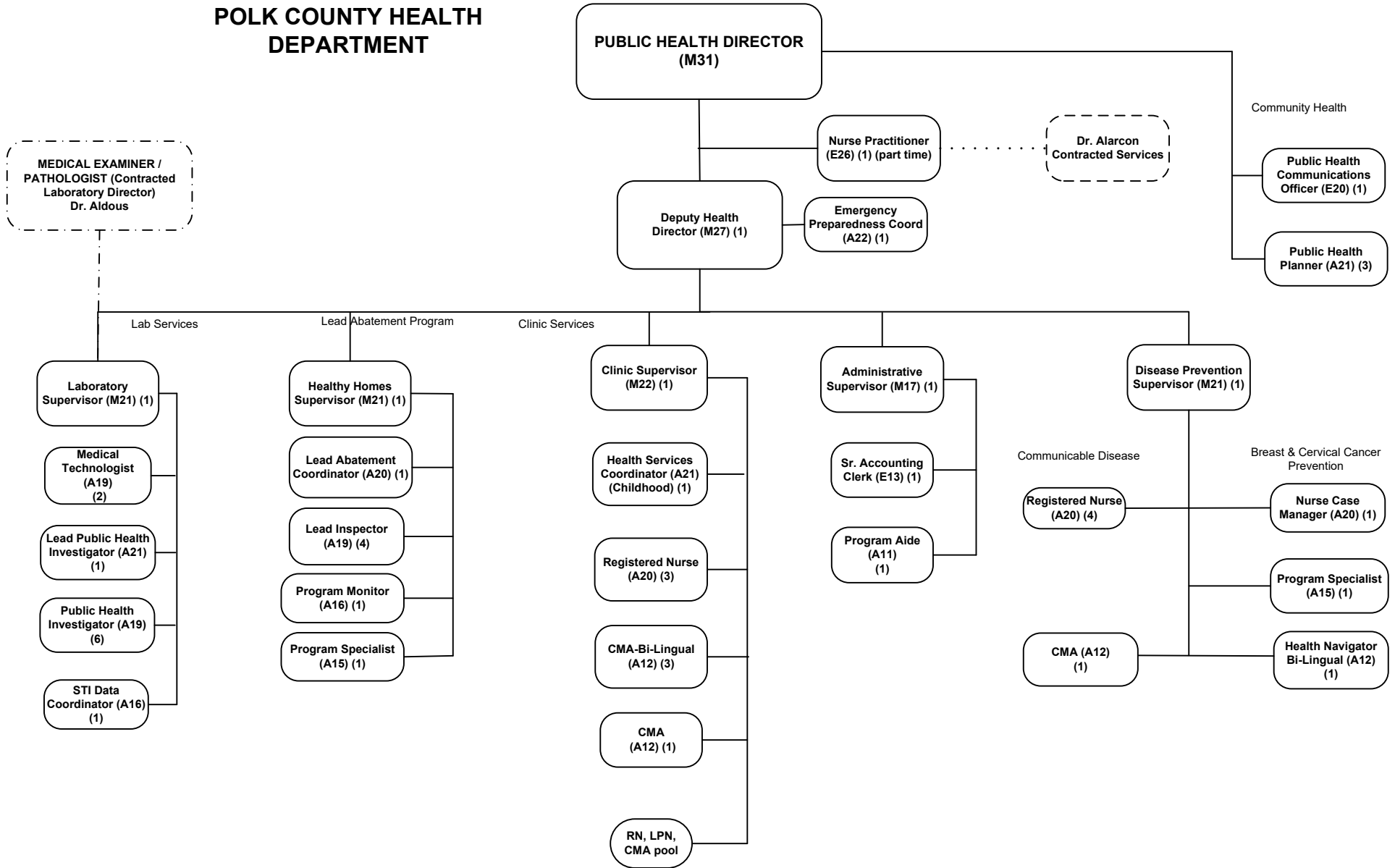


Note: dotted line reflects indirect reporting relationship; Legal Secretary positions are assigned to a division/unit but report directly to the Office Supervisor as noted.

# POLK COUNTY GENERAL SERVICES DEPARTMENT

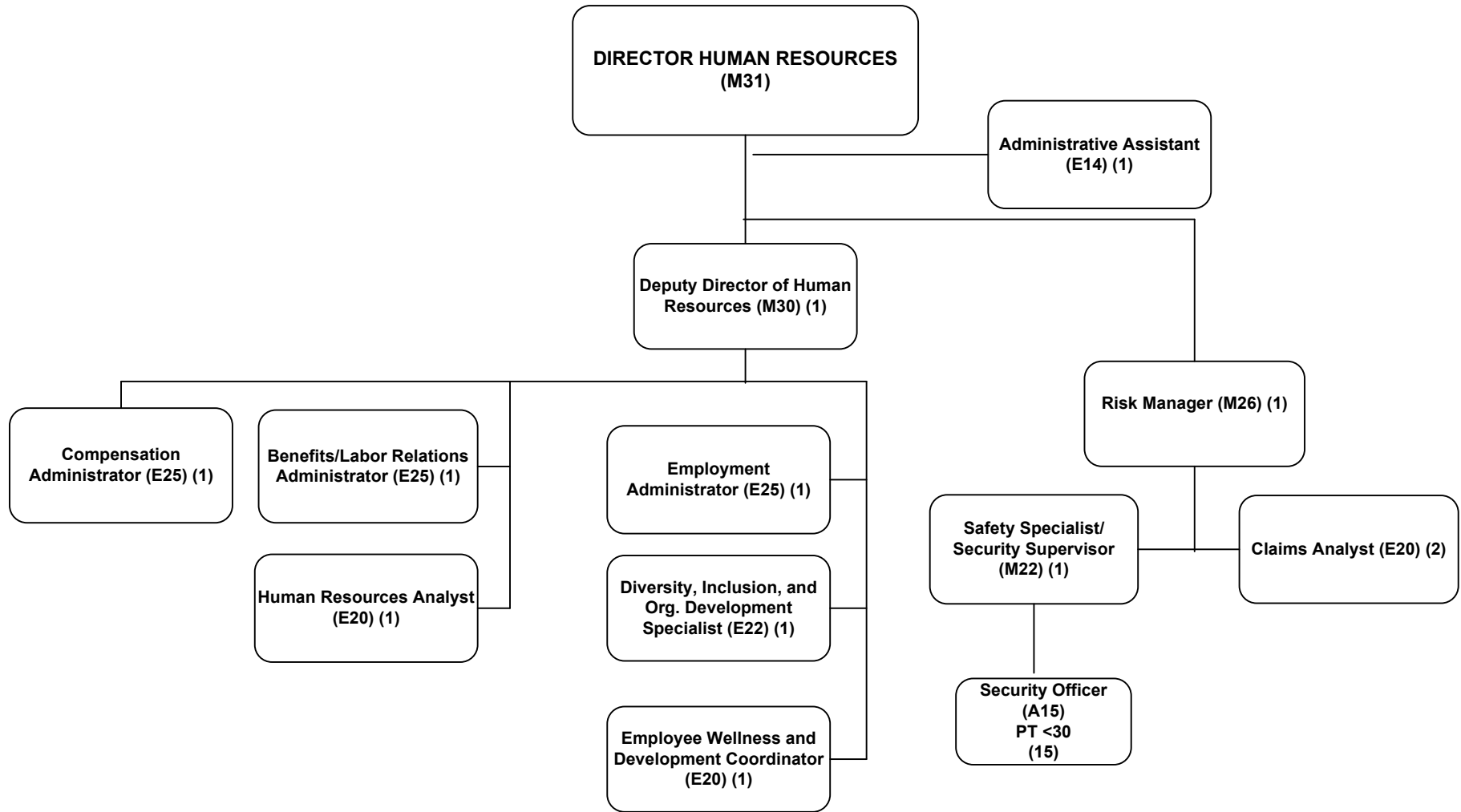


# POLK COUNTY POLK COUNTY HEALTH DEPARTMENT

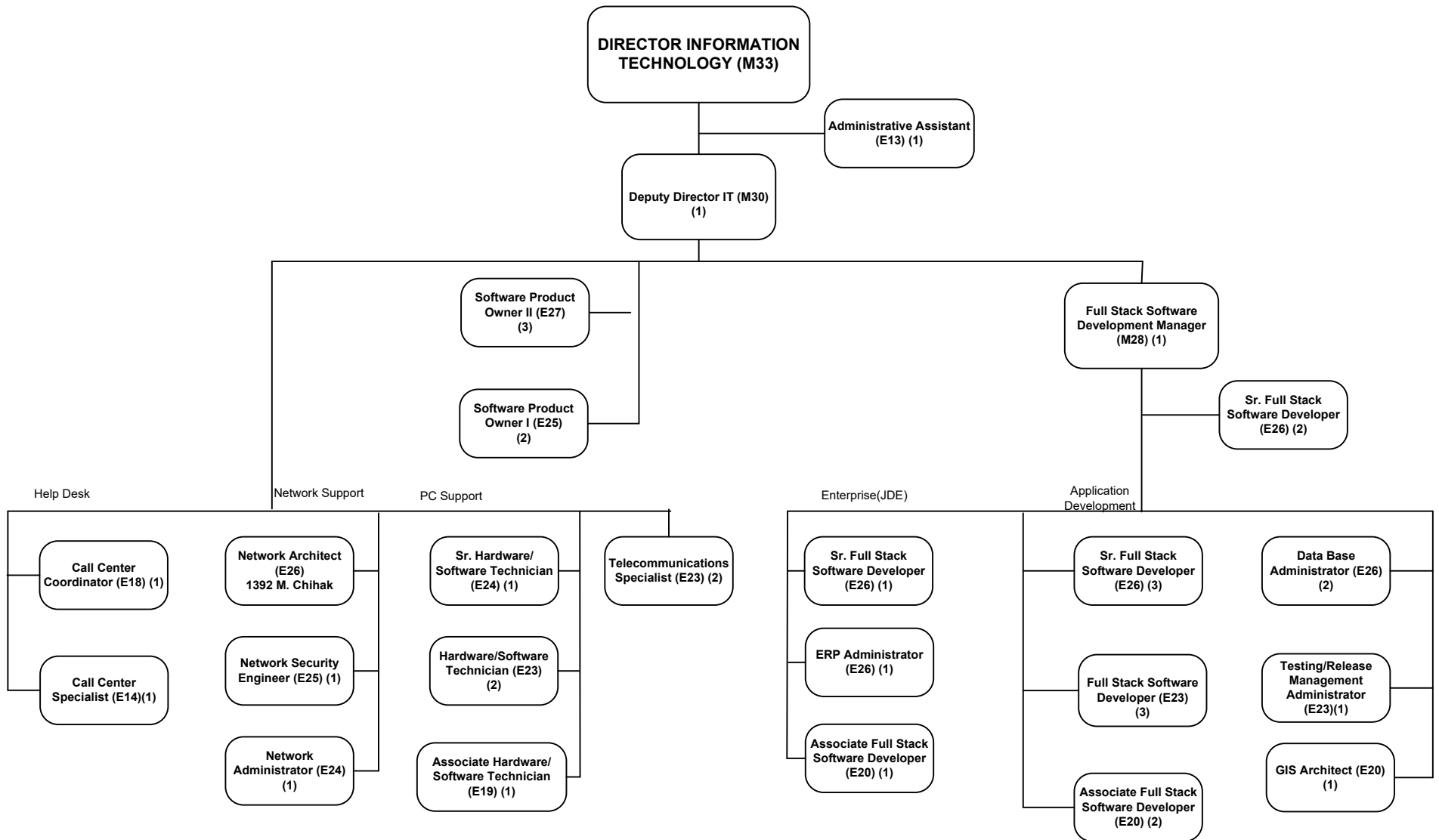


Note: dotted line reflects indirect reporting relationship

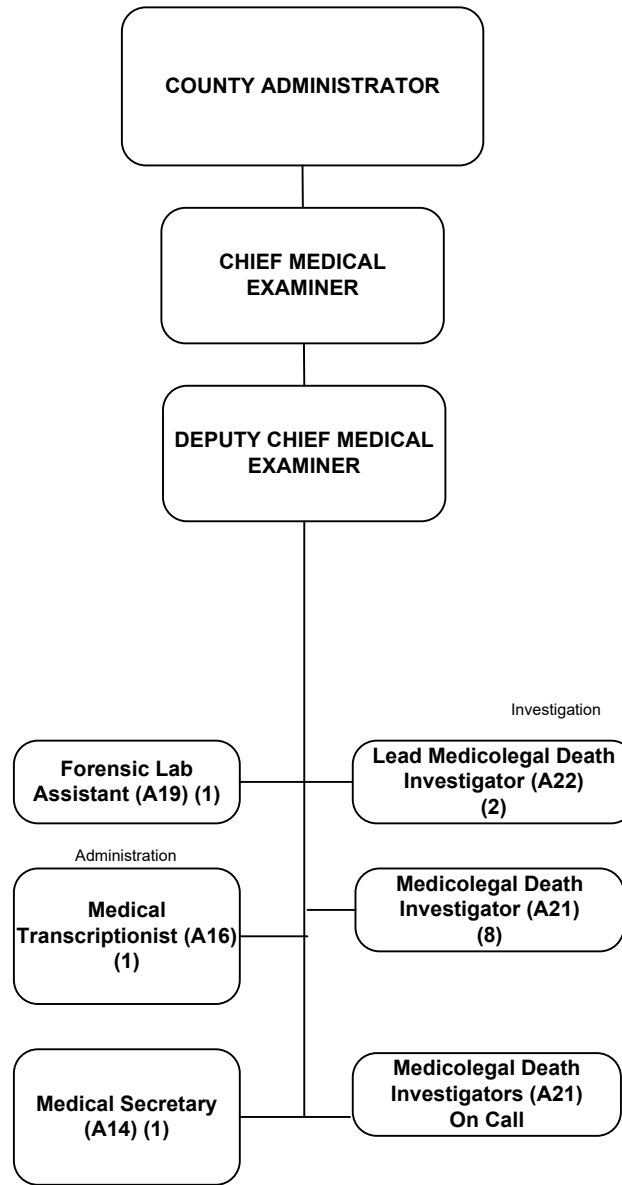
**POLK COUNTY  
HUMAN RESOURCES DEPARTMENT**



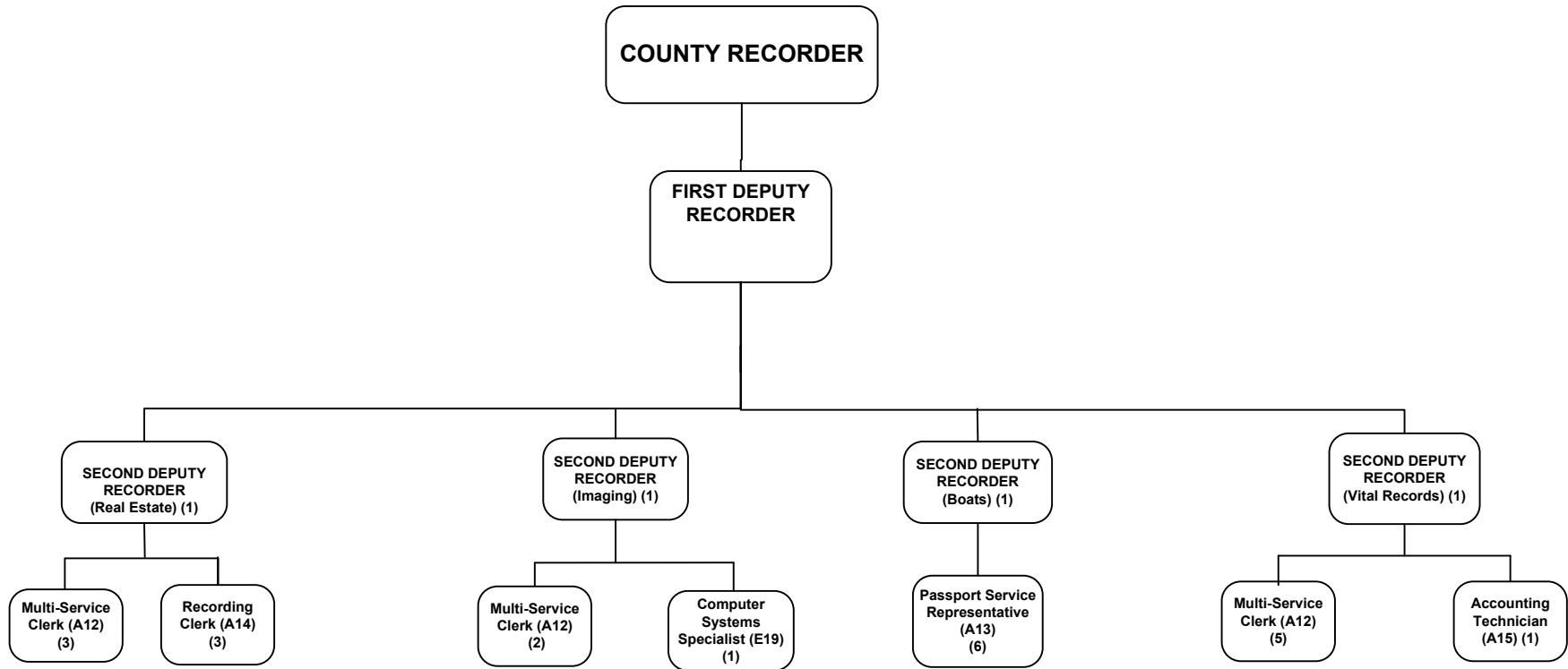
# POLK COUNTY INFORMATION TECHNOLOGY DEPARTMENT



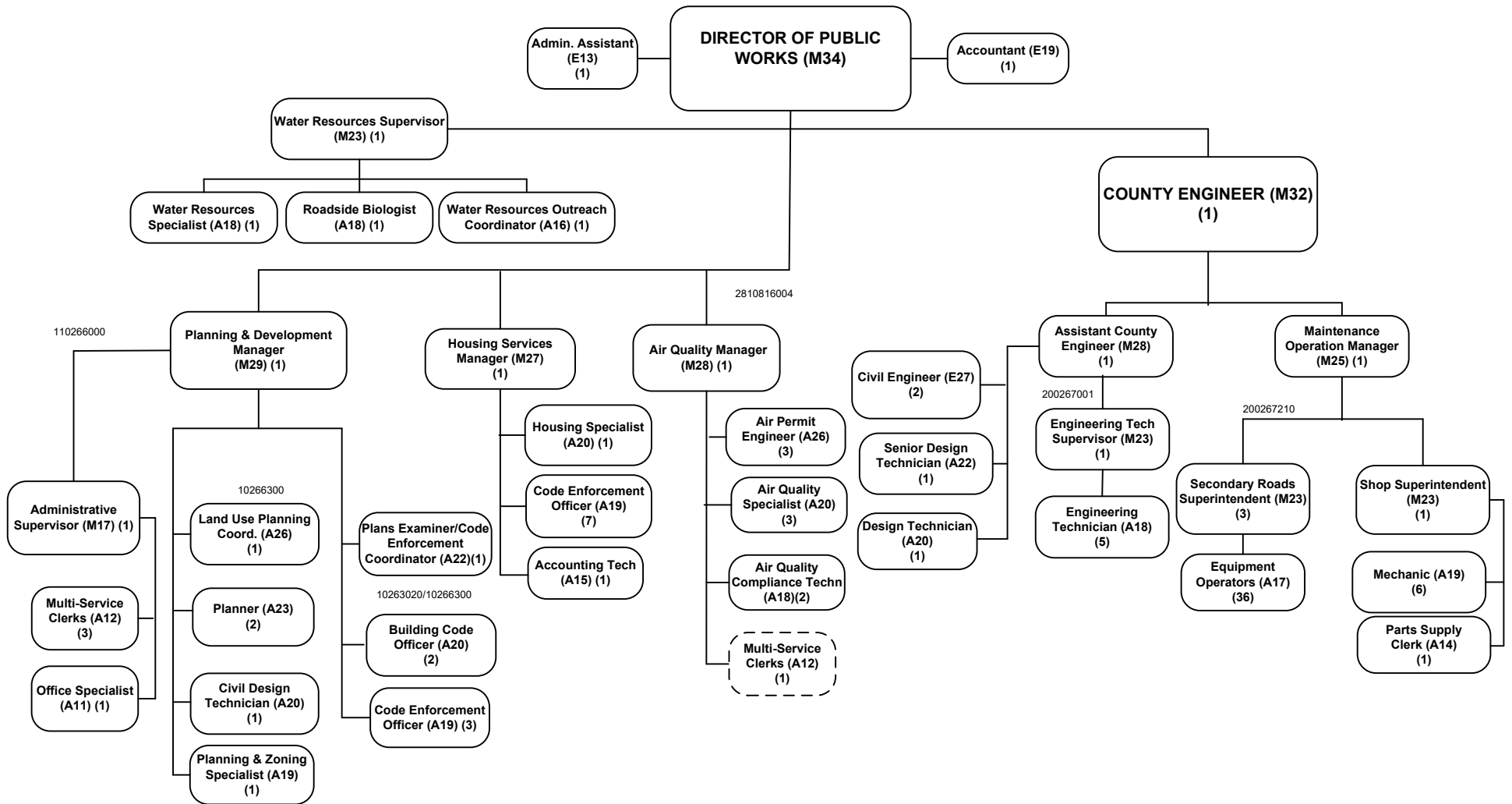
# POLK COUNTY MEDICAL EXAMINER



**POLK COUNTY  
COUNTY RECORDER'S OFFICE**



# POLK COUNTY PUBLIC WORKS DEPARTMENT

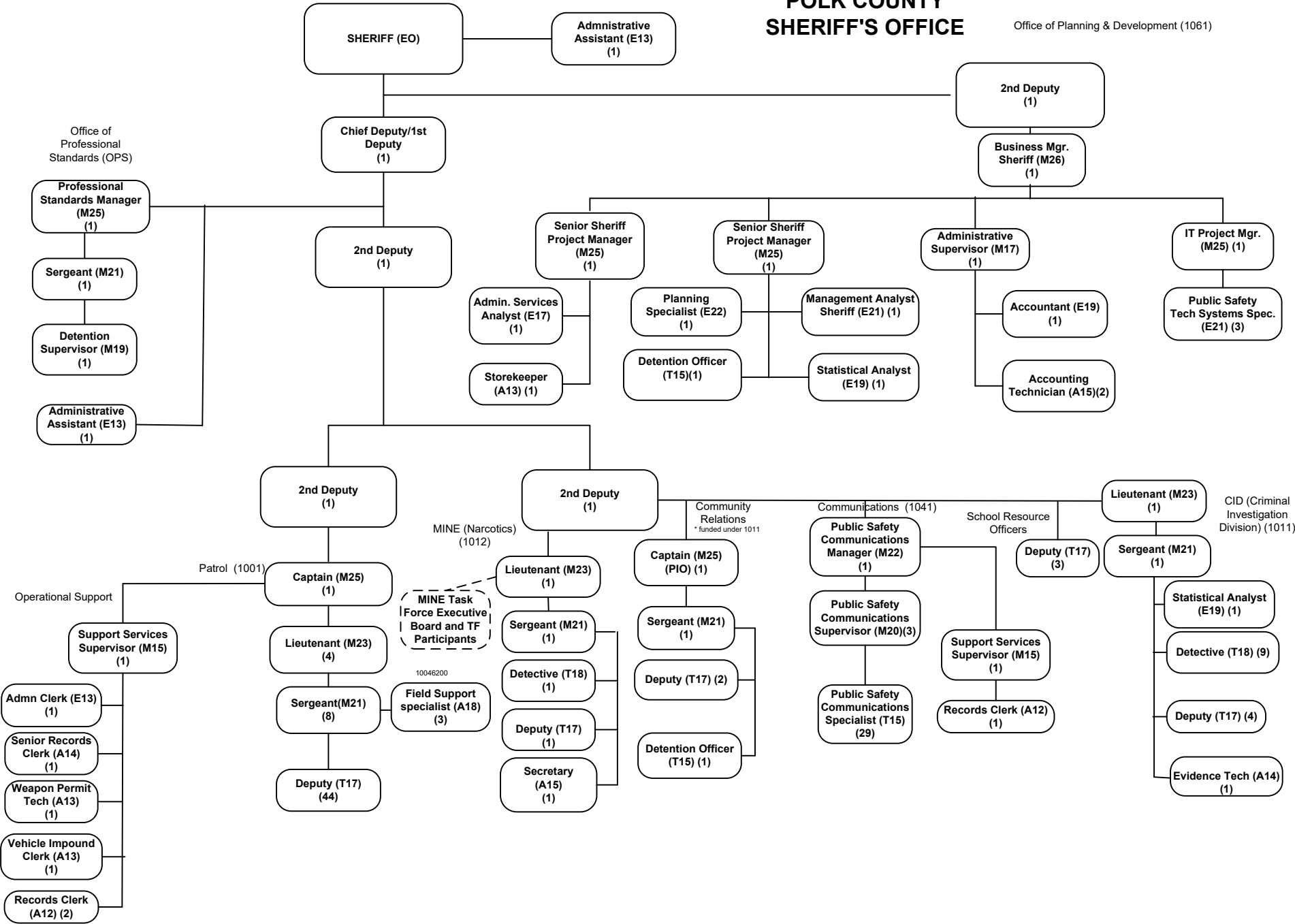


Note: dotted line reflects indirect reporting relationship to the Administrative Supervisor

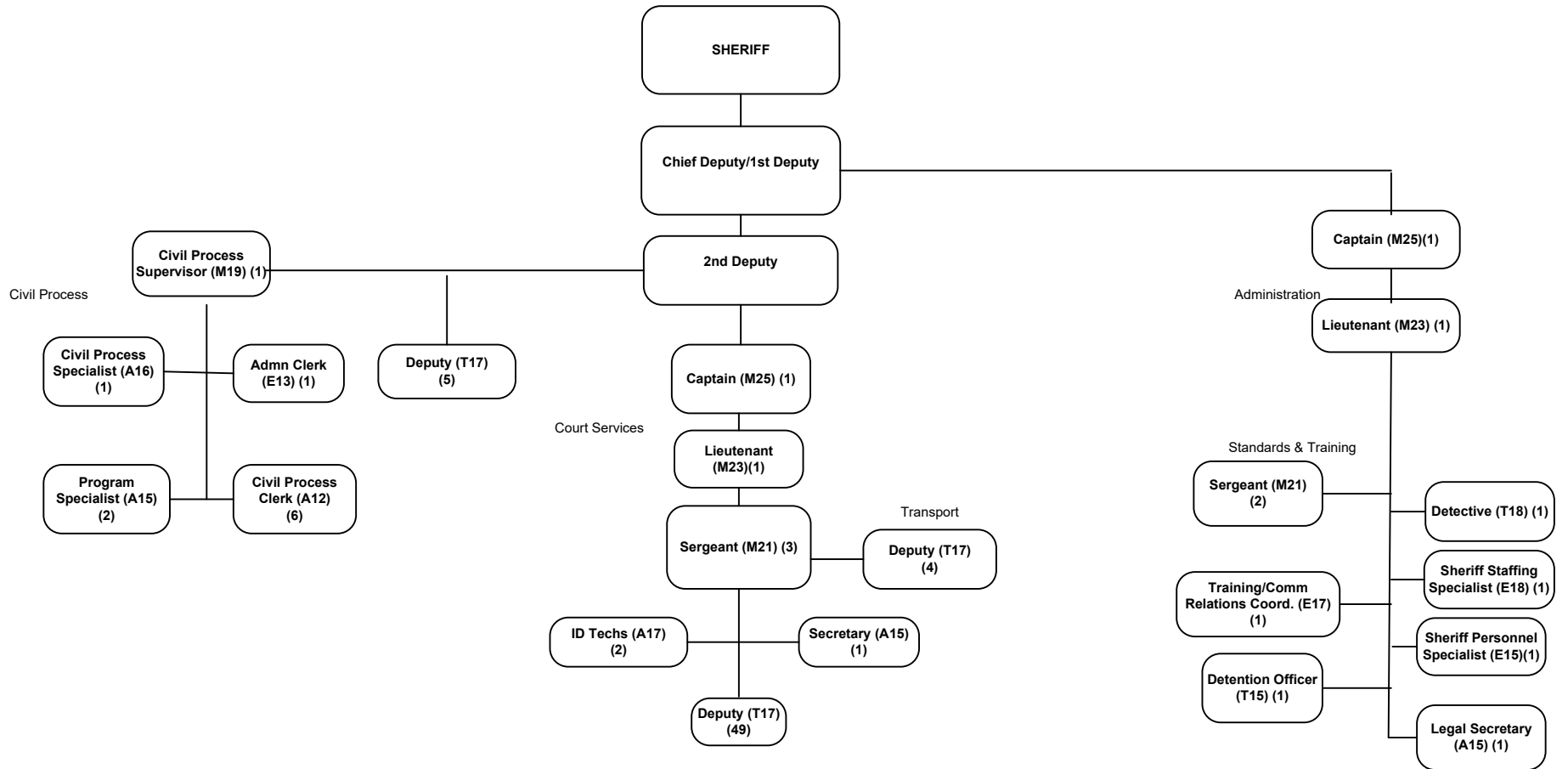


# POLK COUNTY SHERIFF'S OFFICE

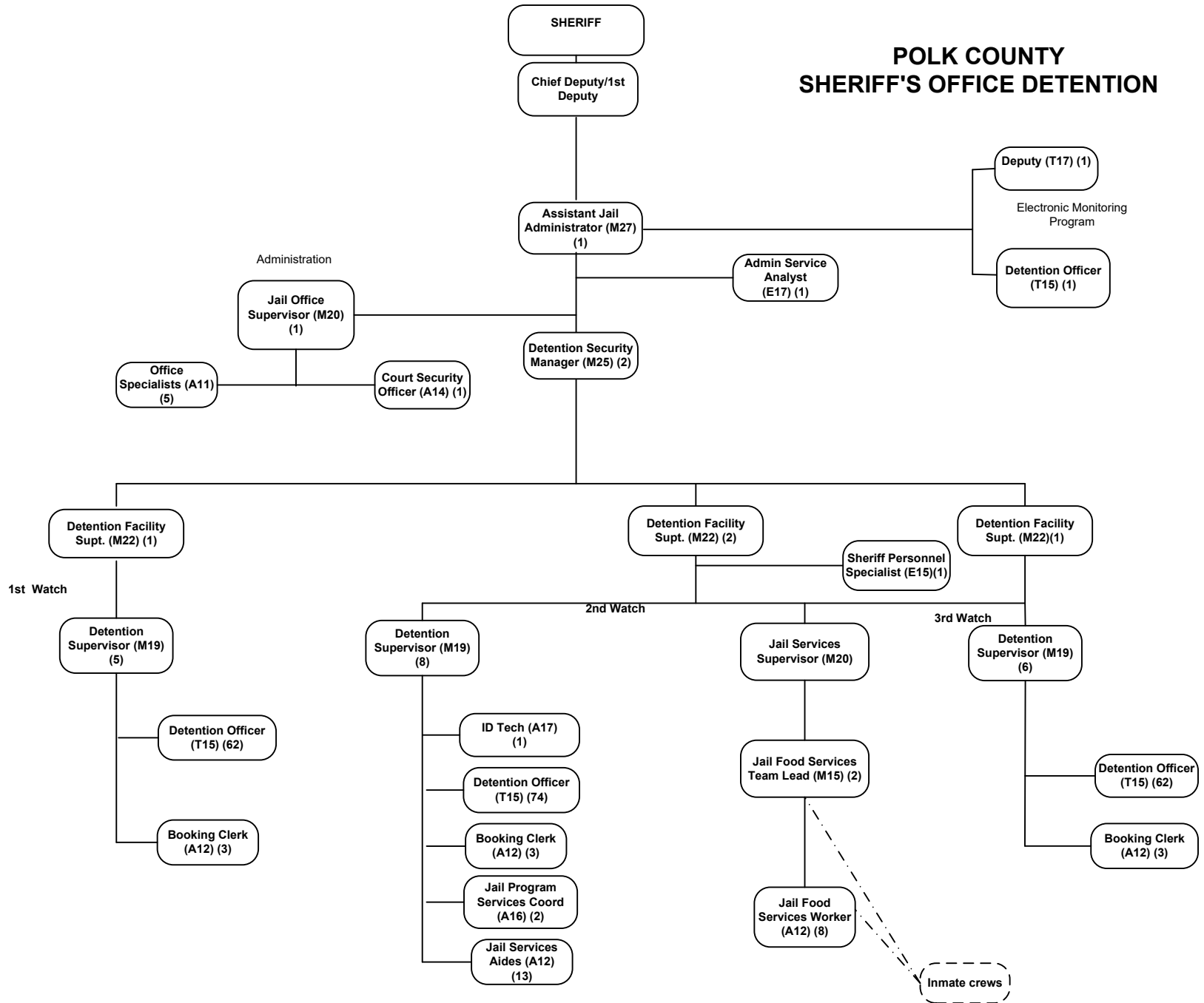
Office of Planning & Development (1061)



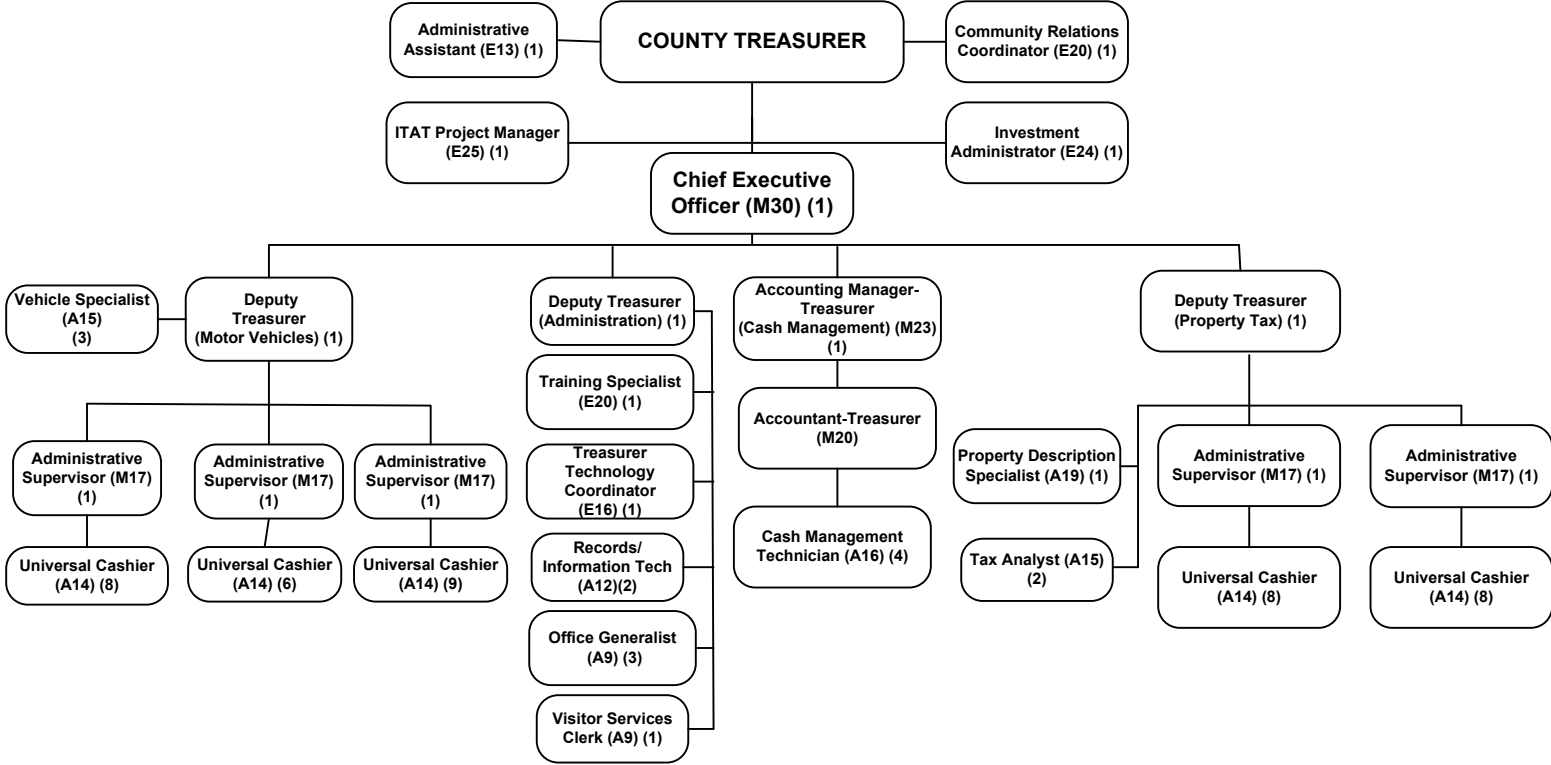
# POLK COUNTY SHERIFF'S OFFICE ADMINISTRATION/COURT SERVICES



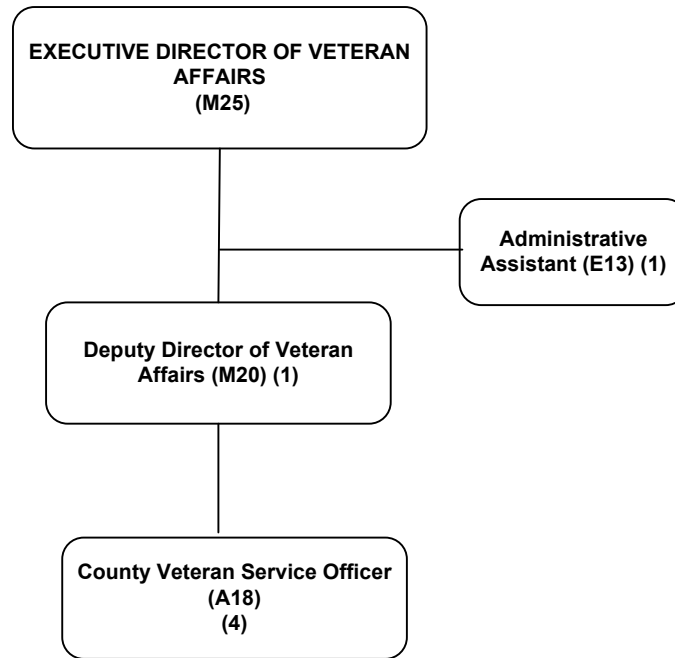
# POLK COUNTY SHERIFF'S OFFICE DETENTION



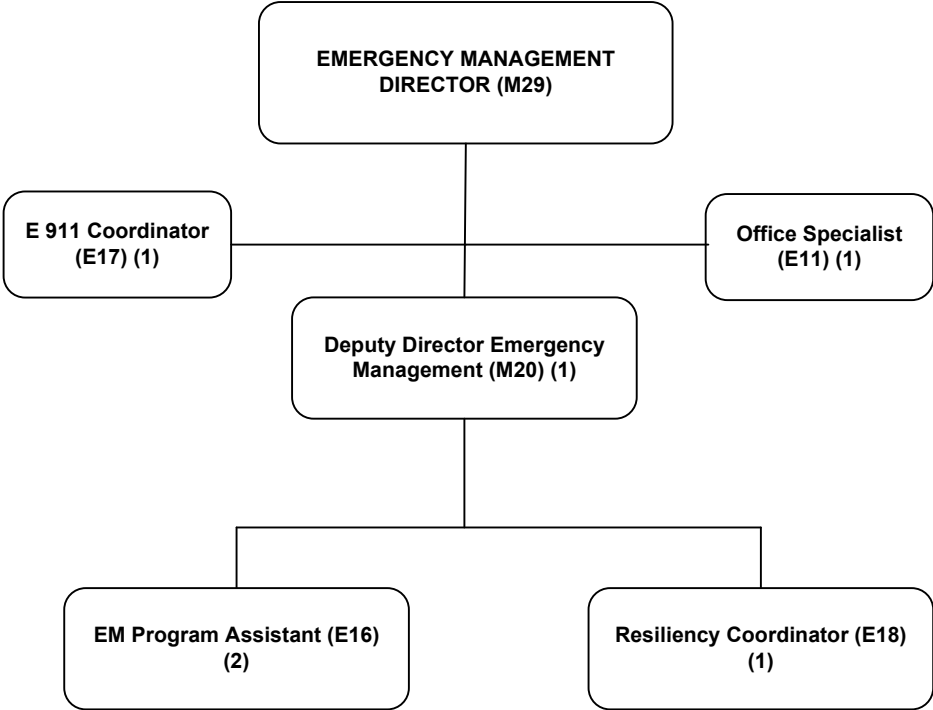
# POLK COUNTY COUNTY TREASURER'S OFFICE



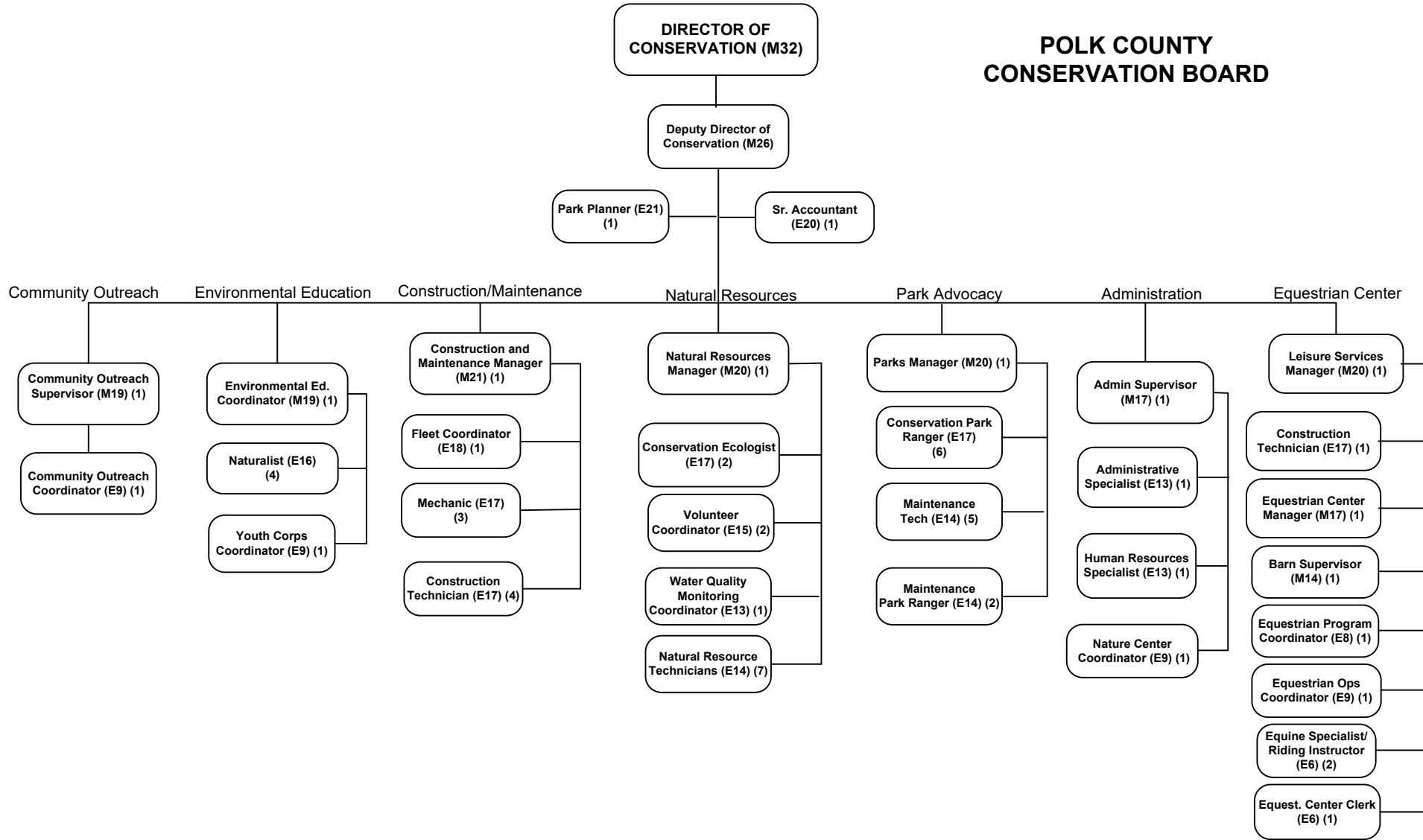
**POLK COUNTY  
VETERAN AFFAIRS DEPARTMENT**



**POLK COUNTY  
EMERGENCY MANAGEMENT DEPARTMENT**



# POLK COUNTY CONSERVATION BOARD



Excludes part time positions