

December, 2014

POLK COUNTY BENCH MARKS

T-81-N , R-25-W

Polk County Bench Marks

BM	Elev.	Description
25	946.75	Near SW corner Sec 9-81-25, on NW 150 Ave, 0.5 miles E of NW Madrid Dr. An IDOT plug in the top of the NE wing of a bridge over Little Creek.
29	996.63	In SE 1/4 of Sec 1-81-25, on NW 158 Ave, 0.25 miles W of NW 58 St. An IDOT plug in the top of the N headwall of a RCB culvert.
30	985.94	In SE 1/4 of Sec 2-81-25, on NW 158 Ave, 0.33 miles W of NW 72 St. An IDOT plug in the top of the N headwall of a RCB culvert.
31	953.16	In SE 1/4 of Sec 4-81-25, on NW 158 Ave, 250' W of NW 100 St. An IDOT plug in the top of the N headwall of a RCB culvert.
32	947.91	In SW 1/4 Sec 4-81-25, on NW 158 Ave, 0.45 miles E of NW 114 St. An IDOT plug in the top of the NW wing of a bridge over Big Creek.
33	967.31	Near S 1/4 Sec 5-81-25, on NW 158 Ave, 0.5 miles E of NW 128 St. An IDOT plug in the top of the NE wing of a bridge over Little Creek.
37	961.57	In NE 1/4 Sec 4-81-25, on NW 166 Ave, 0.25 miles W of NW 100 St. A spike in the top of the NW wing of a bridge over Big Creek.
114	866.03	In NW 1/4 of Sec 36-81-25, on NW Hugg Dr, 500' E of NW 72 St. An IDOT plug in the top of the N headwall of a RCB culvert.
603	936.29	In NE 1/4 of Sec 24-81-25, on NW 58 St, 350' S of NW 142 Ave. An IDOT plug in the top of the E headwall of a RCB culvert.
604	940.49	In NE 1/4 of Sec 24-81-25, on NW 58 St, 0.25 miles S of NW 142 Ave. An IDOT plug in the top of the E headwall of a RCB culvert.

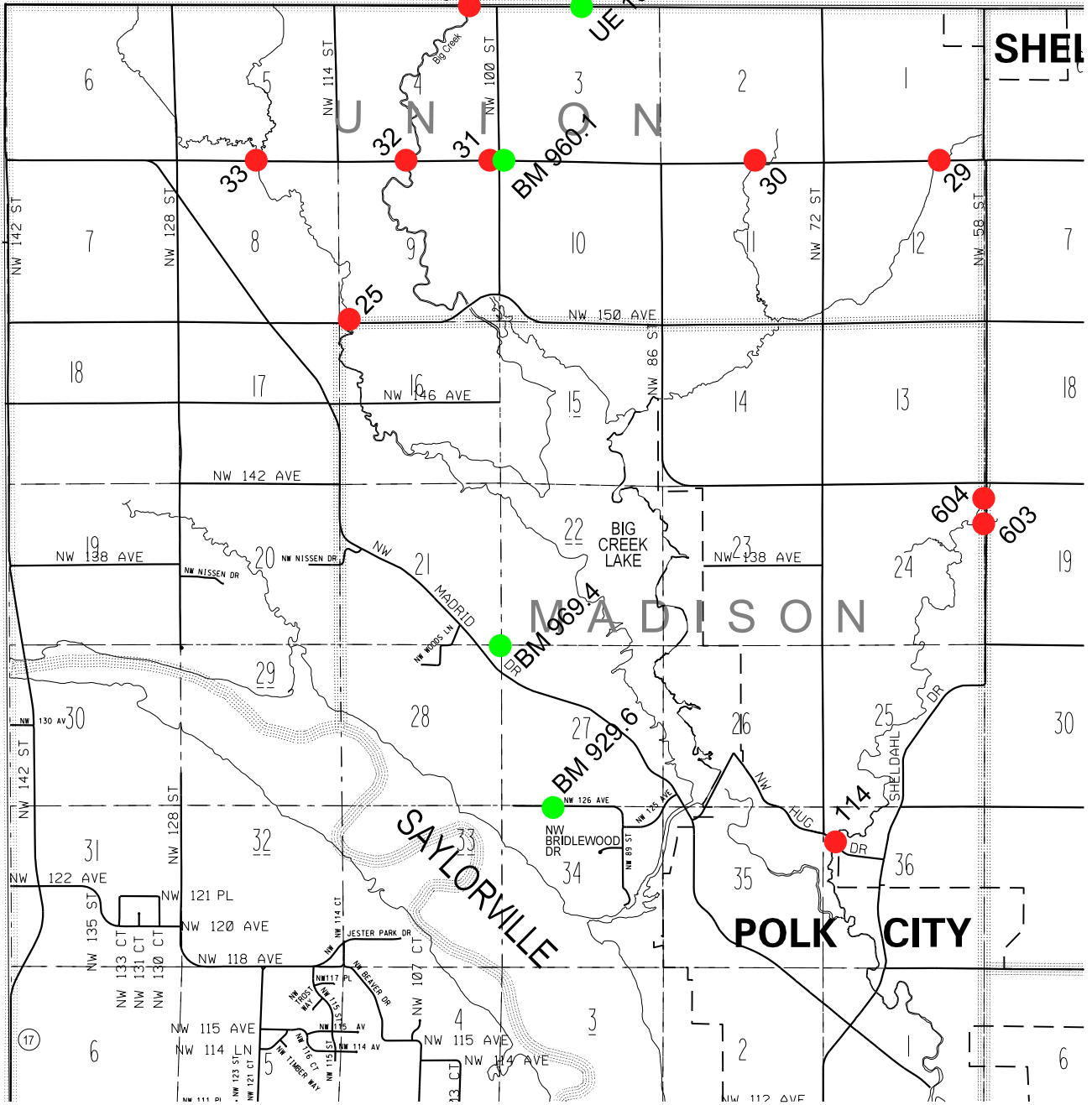
USGS Bench Marks

BM	Elev.	Description
BM 960.1	960.03	T-81-N,R-25-W, Cor. Secs. 3,4,9 &10. 95' N, 33' W & 0.3 lower than X-rds. Standard tablet stamped "27 WMC 1964 960" painted "BM 960.1"
BM 969.4	969.34	T-81-N,R-25-W, near cor. Secs.21, 22, 27 & 28; 128' N, 33' E & 3.9' higher than T-rd N; 1.0' W of fence line; in top of concrete post; a standard tablet stamped "25 WMC 1964 969" painted "BM 969.4"
BM 929.6	929.58	T-81-N,R-25-W, near W sixteenth cor. Between Secs. 27 & 34; 31' N, 55' E & 1.9' higher than T-drive N; on crest of hill in top of in top of concrete post; a standard tablet stamped "26 WMC 1964 930" painted "BM 929.6"

T-81N

R-25W

DES MOINES RIVER



SHEL

UNION

MADISON

SAYLORVILLE

POLK CITY

UE 1007.7

BM 960.1

BM 969.4

BM 929.6

17

6

T-81-N , R-24-W

Polk County Bench Marks

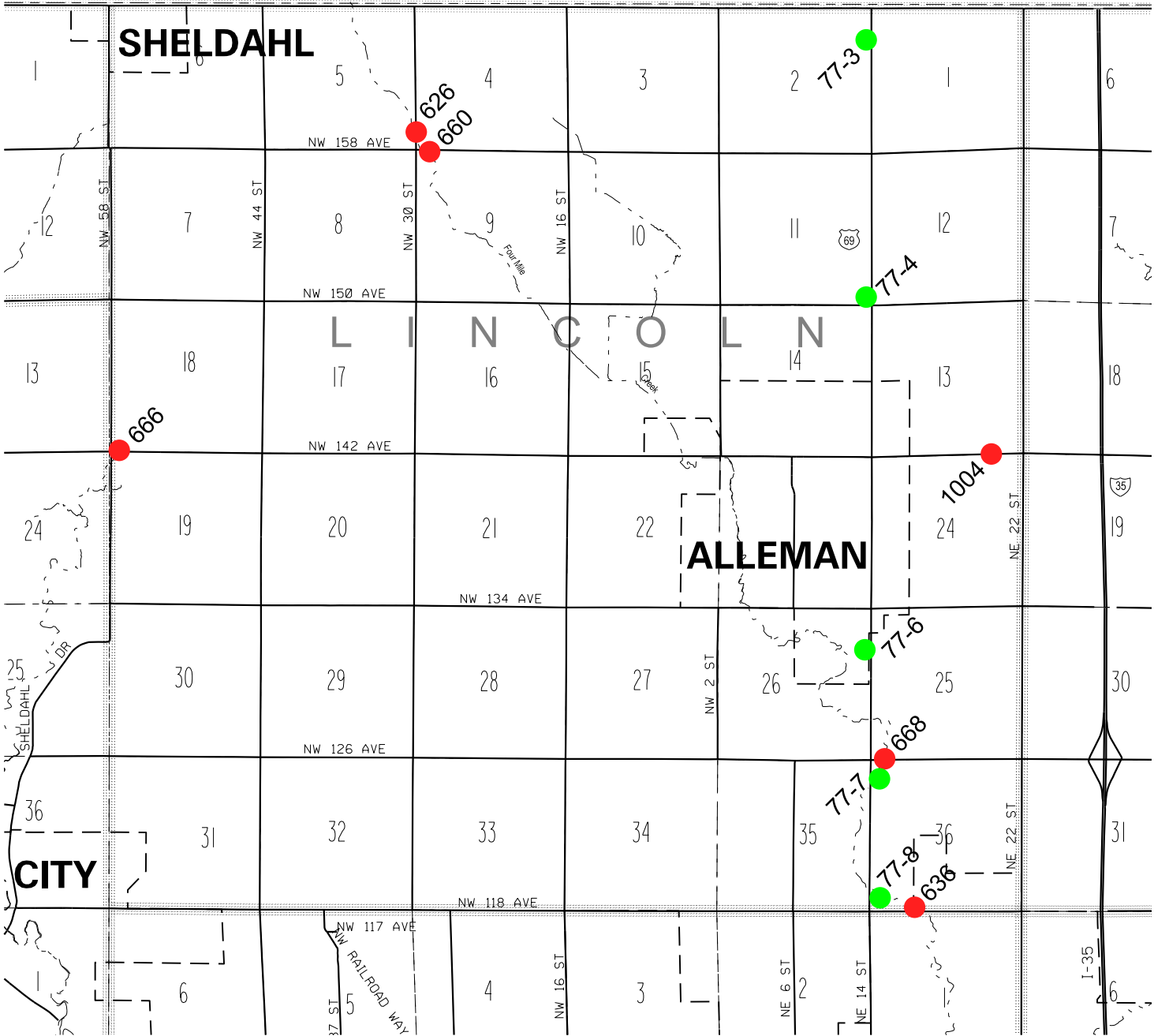
BM	Elev.	Description
636	931.53	In SW 1/4 Sec 36-81-24, on NW 118 Ave., 0.37 miles E of US Hwy 69. An IDOT plug in top of the NW wing of bridge over Fourmile Creek.
668	942.37	In SW 1/4 Sec 25-81-24, on NW 126 Ave., 330' E of US Hwy 69. An "X" in top of NW wing of bridge over Fourmile Creek.
626	999.48	In SE 1/4 Sec 5-81-24, on NW 30 St, 350' N of NW 158 Ave. An IDOT plug in top of W headwall of a RCB culvert.
660	998.96	In SW 1/4 Sec 4-81-24, on NW 158 Ave, 150' E of NW 30 St. An IDOT plug in top of N headwall of a RCB culvert.
1004	1004.49	In SE 1/4 Sec 13-81-24, on NE 142 Ave, 0.2 miles W of NE 22 St. A chiselled "X" on S headwall of a RCB culvert.

USGS Bench Marks

BM	Elev.	Description
77-3	1030.44	Near E 1/4 of NE 1/4 Sec 2-81-24, 37' W of CL of US Hwy 69, 2' W of a wooded witness post. State Survey standard disk stamped "77-3", set in top of concrete post.
77-4	1010.90	Near SE Cor Sec 11-81-24, 44.5' NW of Section Corner, 44.8' SW of pav't Sta 1159, 2' W of a wood witness post. State Survey standard disk stamped "77-4", set in top of concrete post.
77-6	1000.45	Near E 1/4 of NE 1/4 Sec 26-81-24, 80" N of fence corner, 31' W of CL of US Hwy 69. State Survey standard disk stamped "77-6", set in top of concrete post.
77-7	947.04	Near NW Cor Sec 36-81-24. 87' S of NE 126 Ave, 27' E of CL of US Hwy 69, 2' E of a wooden witness post. State Survey standard disk stamped "77-7", set in top of concrete post.
77-8	941.740	Near SW Cor Sec 36-81-24, 32' N of CL NE 118 Ave, 30' E of CL of US Hwy 69. State Survey standard disk stamped "77-8", set in top of concrete post.

R-24W

T-8 IN



T-81-N , R-23-W

Polk County Bench Marks

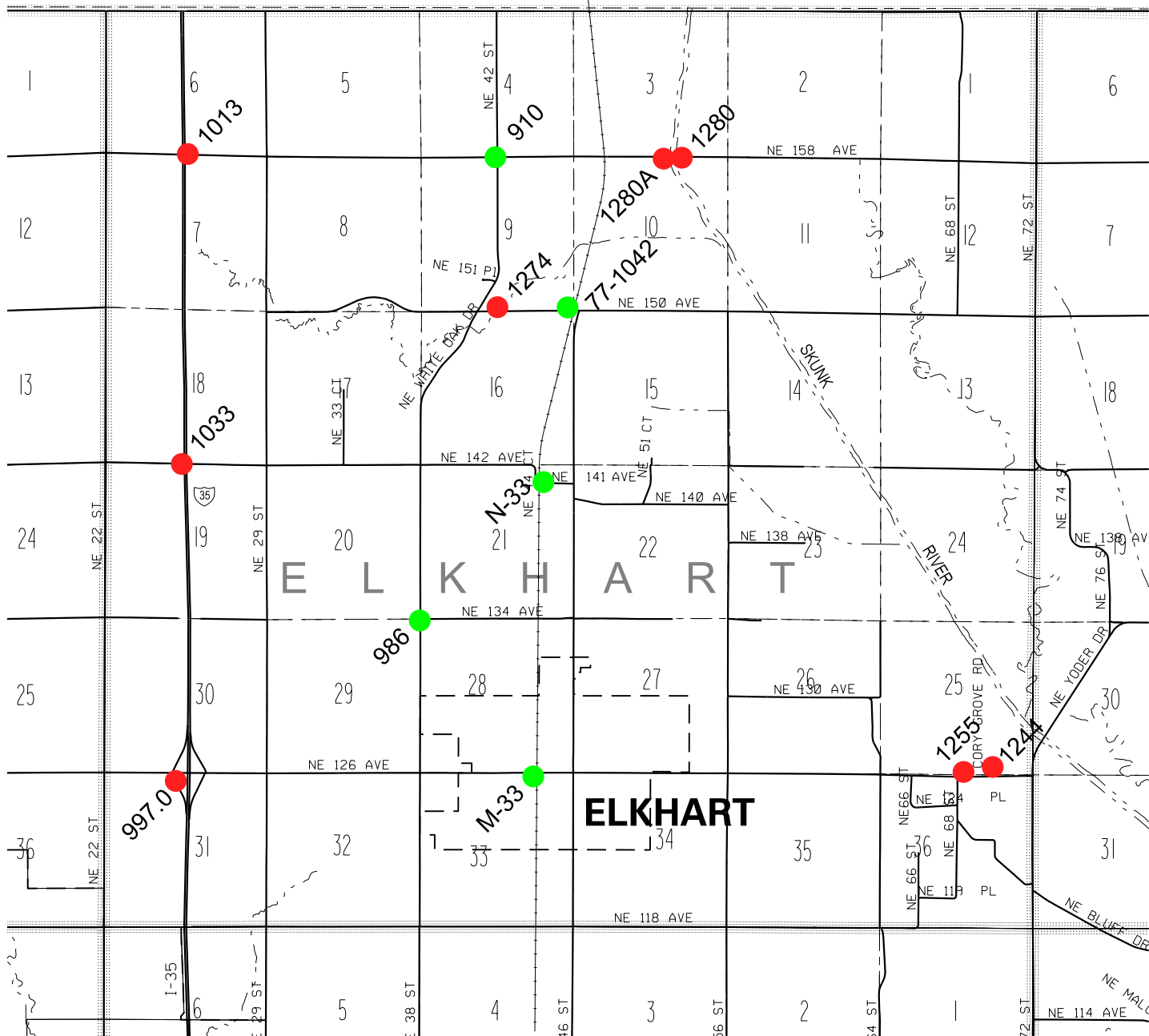
BM	Elev.	Description
1033	1032.61	Near S 1/4 Cor Sec 18-81-23, on NE 142 Ave at Interstate 35. An IDOT plug on SW corner of bridge over I-35.
1274	877.03	Near S 1/4 Cor Sec 9-81-23, on NE 150 Ave., 550' E of NE White Oak Dr. An IDOT plug on top of the S headwall of a RCB culvert.
1255	842.86	Near S 1/4 Cor Sec 25-81-23, on NE 126 Ave., 25' E of NE 68 St. An IDOT plug on top of S headwall on a RCB culvert.
1244	835.40	In SE 1/4 Sec 25-81-23, on NE Cory Grove Rd., 50' N of NE 126 Ave. A chiselled "X" in W headwall on a RCB culvert.
977.0	997.02	Near S 1/4 Cor Sec 30-81-23, on NE 126 Ave at Interstate 35. An IDOT plug on SW wing of bridge over I-35.
1280	842.62	In SE 1/4 Sec 3-81-23, on NE 158 Ave. A gas pipe on top of bridge piling on bridge over Skunk River.
1280A	838.14	In SE 1/4 Sec 3-81-23, on NE 158 Ave. An IDOT plug on top of the N headwall of X-rd culverts 120' W of Skunk River Bridge.
1013	1013.68	Near S 1/4 Cor Sec 6-81-23, on NE 158 Ave at Interstate 35. An IDOT plug on SW wing of bridge over I-35.

USGS Bench Marks

BM	Elev.	Description
910	908.965	Near N 1/4 Cor Sec 9-81-23, 32' S of CL of NE 158 Ave, 22' E of CL of NE 42 St, 2.3' SW of fence corner. A USGS standard cap, stamped "910", riveted on the top of a 3 1/2" iron pipe.
986	984.50	Near NW Cor Sec 28-81-23, 31' S of CL of NE 134 Ave, 27' E of CL of NE 38 St, 3.3 S of fence corner. A USGS standard cap, stamped "986", riveted on the top of a 3 1/2" iron pipe.
77-1042	890.418	Near NE Cor Sec 16-81-23 45.2' W of West rail. A State Survey standard disk, stamped "77-1042" and set in the top of a concrete post.
N-33	937.816	In NE 1/4 Sec 21-81-23, at RR X-ing on NE 141 Ave, 39' S of CL of NE 141 Ave, 20.8' E of East rail, 30.3' SW of fence corner. A standard disk, stamped "N 33 1934" and set in the top of a concrete post projecting about 5 inches above ground.
M-33	979.519	Near NE Cor Sec 33-81-23, at RR X-ing on NE 126 Ave, 45.3' W of West rail, 29' S of CL of NE 126 Ave, 6.2' SE of fence corner and 2' E of fence. A standard disk, stamped "M 33 1934" and set in the top of a concrete post projecting about 3 inches above ground.

R-23W

T-8 IN



T-81-N , R-22-W

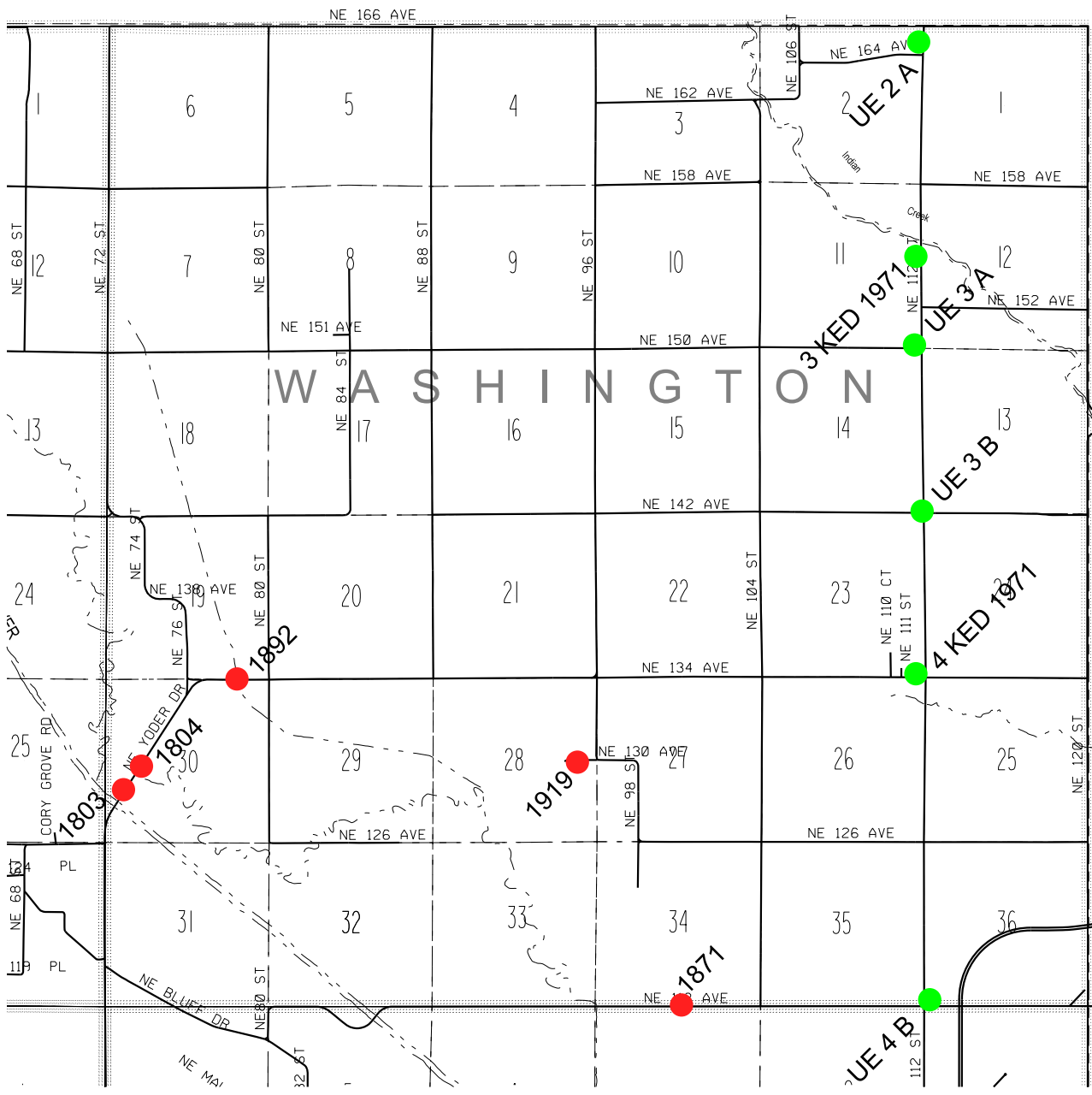
Polk County Bench Marks

BM	Elev.	Description
1803	836.86	In SW 1/4 Sec 30-81-22, on NE Yoder Dr, 0.3 miles N of NE 126 Ave. A cut "X" on top of the the concrete curb at NW corner of bridge over Skunk River.
1804	831.09	In SW 1/4 Sec 30-81-22, on NE Yoder Dr, 0.5 miles N of NE 126 Ave. An "X" Top of Curb NW wing of bridge over old river channel.
1871	834.61	Near S 1/4 Cor Sec 34-81-22, on NE 118 Ave, 0.5 miles W of NE 104 St. An IDOT plug on the N headwall of a RCB culvert.
1892	828.15	In SE 1/4 Sec 19-81-22, on NE 134 Ave. 1000' W of NE 80 St. An IDOT plug on N headwall of a RCB culvert.
1919	964.59	Near E 1/4 Cor Sec 28-81-22 on NE 130 Ave at intersection NE 86 St. A RR Spk in power pole 600' E of a RCB culvert in NW quadrant of intersection, 31' N of CL of NE 130 Ave.

USGS Bench Marks

BM	Elev.	Description
UE 2 A	925.01	In NE 1/4 Sec 2-81-22, 215' N, 57' W, and 1.4' higher than T-Rd W. SE corner of bottom step at entrance to Peoria Methodist Church, a chiseled square.
KED 197	852.19	Near 1/4 Cor between Sec 11-81-22 & Sec 12-81-22 on bridge on NE 112 St over Skunk River. 12.5' W of and 0.9' higher than CL of road at bridge. Top of S end of concrete base of W railing, a standard tablet stamped "3 KED 1971", painted.
UE 3 A	850.80	Near SE Cor Sec 11-81-22 on NE 112 St at NE 150 Ave. 23' N, 38' W and 2.9' lower than intersection. N end of concret pipe culvert, chiseled square, painted.
UE 3 B	893.48	Near SW Cor Sec 13-81-22 on NE 142 Ave. 345' E, 14' S and 10.3' lower than intersection at NE 112 St. Center of S headwall of 18' concrete box culvert, chiseled square, painted.
KED 197	969.26	Near SE Cor Sec 23-81-22 on NE 134 Ave at Farrar. 501' W, 27.5' N and 9.3' higher than intersection at NE112 St. 22.5' W of road S by school, 3.7' E of E gate post at cemetery entrance and 0.5' S of fence. A standard tablet attached to a copper weld rod centered in a 6 in. tile filled with gravel and level with the ground, tablet is stamped "4 KED 1971", not painted.
UE 4 B	916.04	Near SW Cor Sec 36-81-22 on NE 118 Ave. 32' N, 41' E and 4.4' lower than intersection at NE 112 St. SE end of NE headwall of 8' concrete box culvert, chiseled square, painted.

R-22W



T-8 IN

T-80-N , R-25-W

Polk County Bench Marks

BM	Elev.	Description
130	861.76	In SE 1/4 Sec 36-81-25, on NW 118 Ave., 700' E of Polk City Cemetery entrance. An IDOT plug in the top of the N headwall of a RCB culvert.
2405	856.38	In SW 1/4 Sec 7-80-25, on NW 102 Ave., 0.35 miles E of county line. Top of SW corner of SW wing of bridge.
2460	850.20	In NW 1/4 Sec 1-80-25, on NW Sheldahl Dr., 800' S of NW 118 Ave. An IDOT plug in top of the E headwall of a RCB culvert.
2465	832.489	In SW 1/4 Sec 35-80-25, on NW 70 Ave., 425' E of NW 86 St. A brass plug in the NE corner of the top of the barrier rail on bridge over Beaver Creek.
860	859.29	In SE 1/4 Sec 17-80-25, on IA Hwy 141, 0.25 N of SE corner of Section 17, approx. 45' S of CL of median crossover, 42' E of CL of Northbound lane of highway. A lead plug in the E headwall of a RCB culvert.

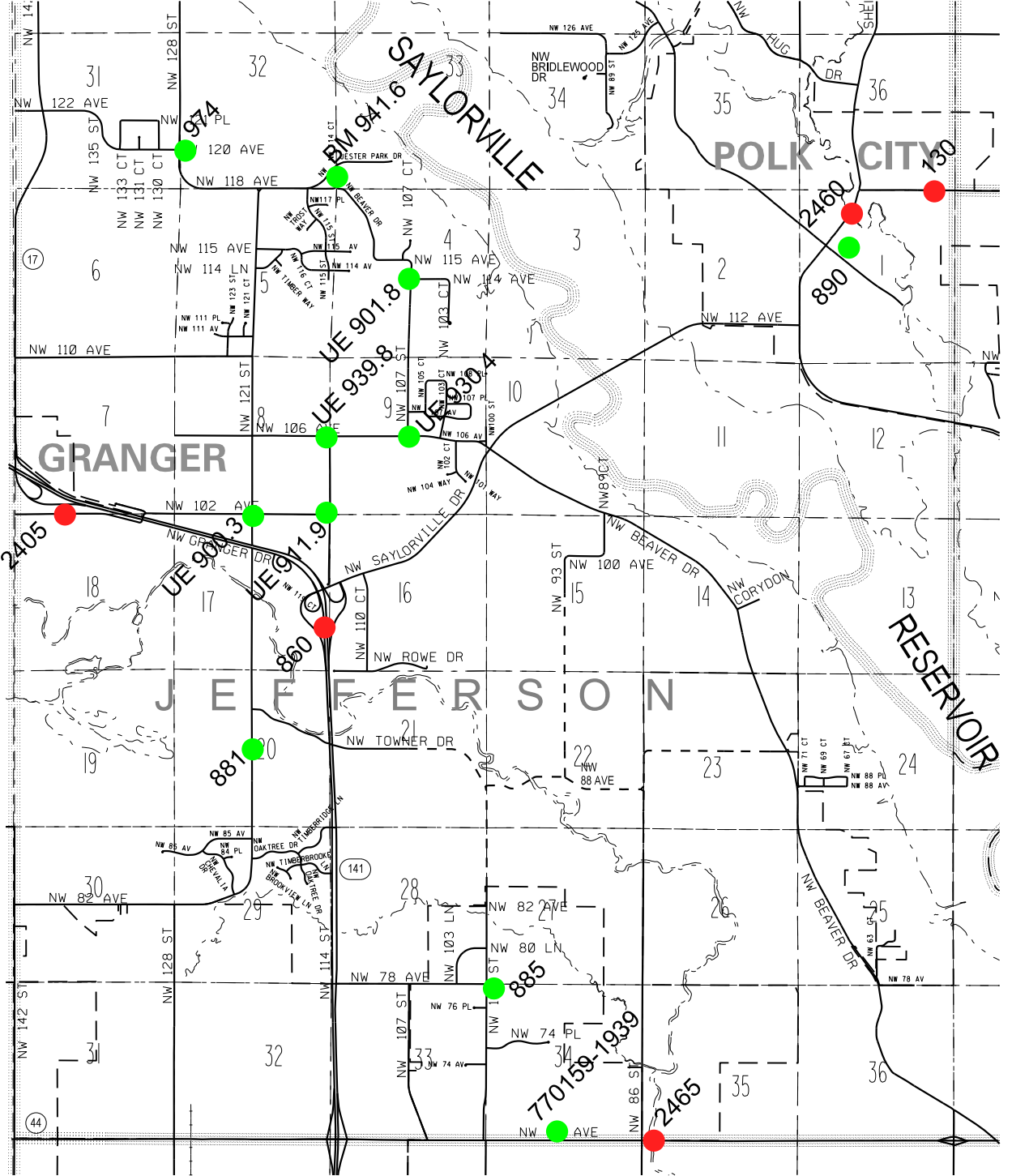
USGS Bench Marks

BM	Elev.	Description
974	972.786	Near NE 1/4 of SE 1/4 Sec 31-81-25, E of intersection of NW 128 St & NW 120 Ave.
BM 941.6	941.592	Near SW Cor Sec 33-81-25, 76' S, 38' W of, 1.2' higher than intersection of NW Jester Park Dr & NW 114 St. in top of concrete post. A standard tablet stamped "27 WMC 1964 942" painted "BM 941.6"
UE 901.8	901.72	Near Center Sec 4-80-25, 390' S and 24' W of intersection of NW 107 St & NW 114 Ave, 5.3' lower than center of road at culvert, on top of CMP culvert, a painted square, painted "UE 901.8"
UE 939.8	939.80	Near 1/4 corner Sec 8/9-80-25, on NW 106 Ave, 62' E of and 4.4' lower than intersection at NW 114 St, on top of concrete culvert, a chiseled square, painted "UE 939.8"
UE 930.4	930.45	Near center Sec 9-80-25, on NW 106 Ave, 39' N, 20' W of and 1.9' lower than intersection at NW 107 St, on top of concrete culvert, a chiseled square, painted "UE 930.4"
UE 900.3	900.38	Near 1/4 cor Sec 8/17-80-25, on NW 102 Ave, 36' W of and 3.3' lower than intersection at NW 121 St, on top S end of concrete culvert, a chiseled square, painted "UE 930.3"
UE 911.9	911.95	Near SE cor Sec 8-80-25, On NW 102 Ave, 18' N, 29' W of, 2.2' lower than intersection of NW 114 St on top of a CMP culvert. A painted square, painted "UE 911.9"
881	879.356	Near center of Sec 20-80-25, on NW 121 St, an iron post stamped "881"
885	883.422	Near NW cor Sec 34-80-25, on NW 100 St, in field E of intersection at NW 78 Ave, an iron post, stamped "885"
77-159 1939	877.433	Near the S 1/4 cor Sec 34-80-25 on NW 70 Ave, 24.7' N of a metal plug in the center of pavement and in line with N-S fence, in concrete post, standard tablet stamped "USC&GS and SS 77-159 1939"
890	888.80	In Polk City, NW Corner Front Face Polk City Savings Bank Aluminum Cap Stamped "890"

R-25W

T-81N

T-80N



T-80-N , R-24-W

Polk County Bench Marks

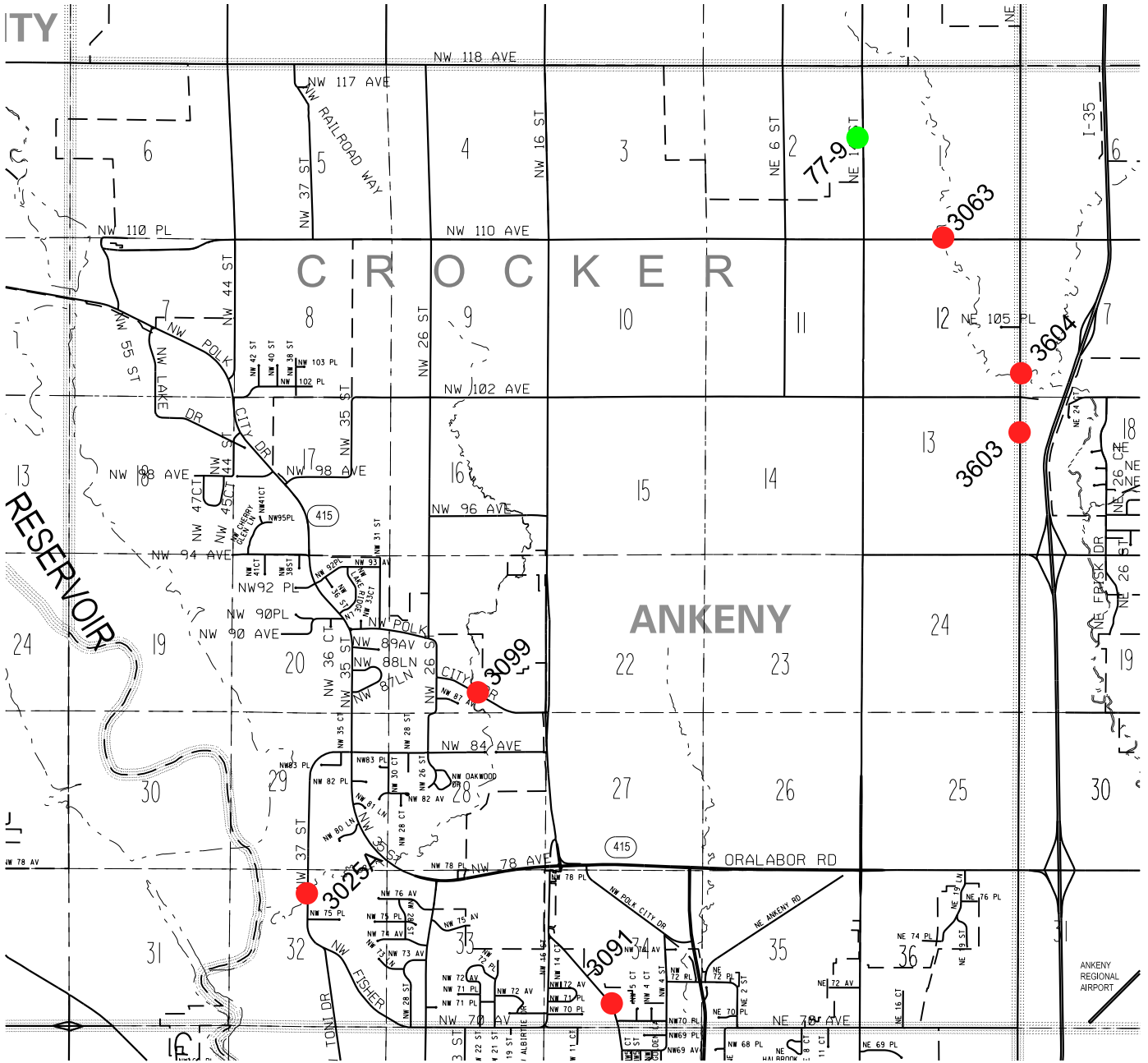
BM	Elev.	Description
3099	885.194	In SE 1/4 Sec 21-81-24 on NW Polk City Dr., 0.5 miles W of Irvindale Dr/NW 16 St. An IDOT plug in N headwall of a RCB culvert on Rock Creek.
3025A	824.12	In N 1/2 Sec 32-80-24, on NW 37 St, 0.2 mile N of NW 75 Pl. An IDOT plug in top of rail, NW corner of bridge over Rock Creek.
3091	869.51	In SW 1/4 Sec 34-80-24, on NW 6 Dr, 630' N of NE 70 Ave. An IDOT plug in outlet headwall of RCB culvert.
3063	921.87	Near S 1/4 cor Sec 1-80-24, on NW 110 Ave. An IDOT plug in top of rail, NW corner of bridge over Fourmile Creek.
3604	911.57	Near SW cor Sec 12-80-24, on NE 22 St/Delaware Ave, 700' N of NE 86 Ave/ NE 18 St. An IDOT plug in top of rail , SW corner of bridge over Fourmile Creek.
3603	903.74	Near SE cor of NE 1/4 Sec 13-80-24 on NE 22 St/Delaware Ave, 0.25 miles S of NE 86 Ave/NE 18 St. An IDOT plug in E headwall of RCB culvert.

USGS Bench Marks

BM	Elev.	Description
77-9	944.513	Near E 1/4 cor Sec 2-80-24, on NE 14 St/Hwy 69, 110' N of 1/4 section line fence, 30' W of centerline of highway, 2' W of a white wooden witness post. A State Survey standard disk, stamped "77-9" and set in the top of a concrete post.

R-24W

T-80N



T-80-N , R-23-W

Polk County Bench Marks

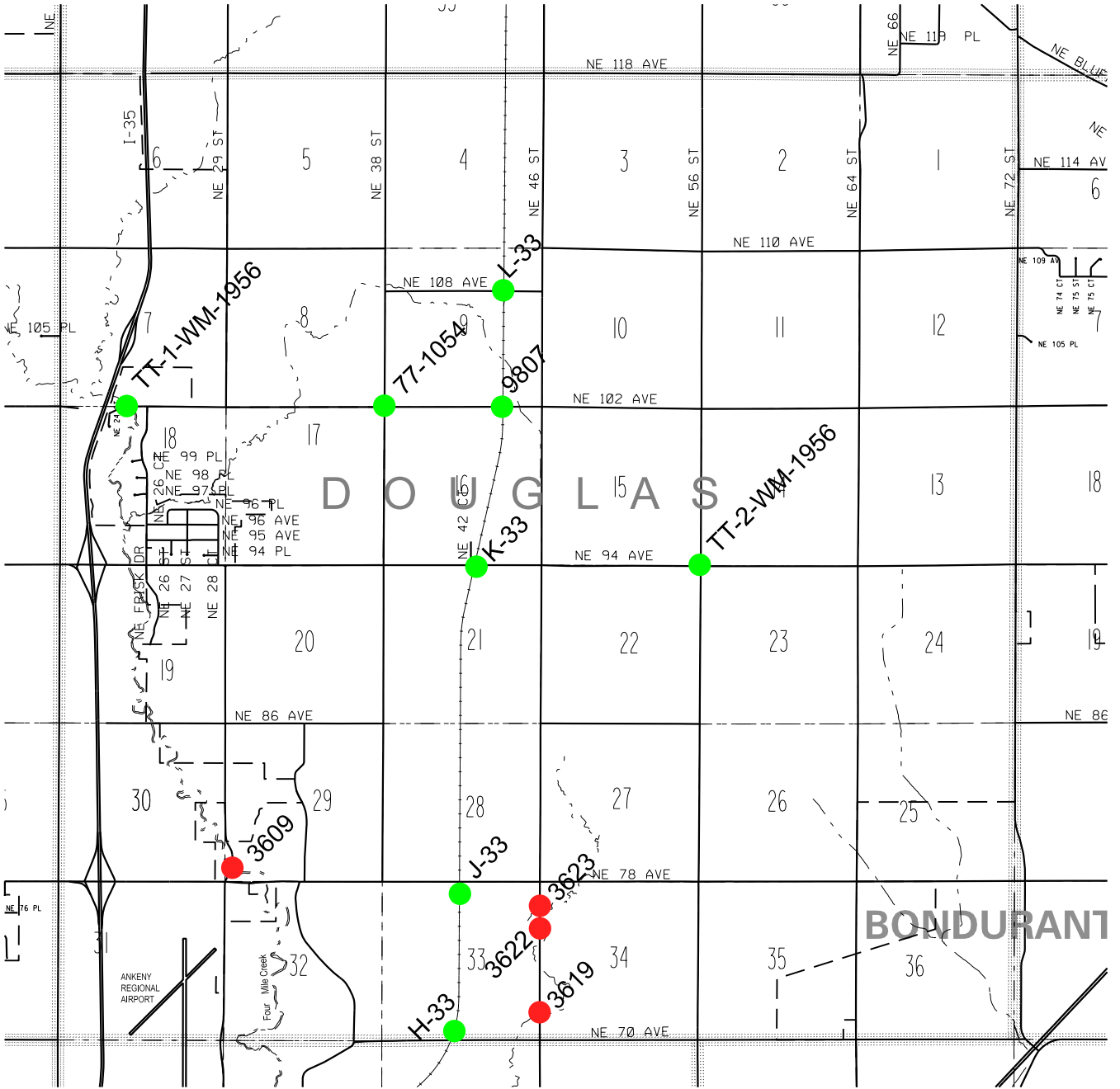
BM	Elev.	Description
3609	882.04	Near SW Cor Sec 29-80-23, on NE 29 St., just N of NE 78 Ave. An IDOT plug in top of concrete rail at NW corner of bridge over Fourmile Creek.
3623	911.69	In NW 1/4 Sec 34-80-23, on NE 46 St, 810'± S of NE 78 Ave. An IDOT plug in E headwall of RCB culvert.
3622	905.18	In NW 1/4 Sec 34-80-23, on NE 46 St, 0.33 miles S of NE 78 Ave. An IDOT plug in E headwall of RCB culvert.
3619	884.66	In SW 1/4 Sec 34-80-23, on NE 46 St, 970'± N of NE 70 Ave. An IDOT plug in E headwall of RCB culvert.

USGS Bench Marks

BM	Elev.	Description
L-33	980.297	In NE 1/4 Sec 9-80-23, on NE 102 Ave, near railroad crossing, 31' S of CL of road, 22' W of W rail. A standard disk, stamped "L 33 1934" and set in the top of a concrete post projecting 4" above ground.
TT-1- WM-1956	901.80	In NW 1/4 Sec 18-80-23, on NE 102 Ave, 560' W of NE Frisk Dr. On top of SW wing wall of a concrete bridge over Fourmile Creek, a standard tablet set in a drill hole, stamped "TT 1 WM 1956".
77-1054	976.607	Near NE cor Sec 17-80-23, on NE 102 Ave, 30' S, 32' W of and 1.1' lower than intersection at NE 46 St. In the top of concrete post, a USC&GS and State Survey disk stamped "77-1054"
9807	1003.184	In SE 1/4 Sec 9-80-23, on NE 102 Ave, 50' W of W rail of railroad tracks, 21' N of CL of road. A USGS standard cap, stamped "9807" and riveted on the top of a 3 1/2" iron pipe.
K-33	1002.632	In NE 1/4 Sec 21-80-23, on NE 94 Ave at Enterprise, near railroad crossing. 70' SE of the SE rail of the main track, 43' S of the CL of NE 94 Ave, a standard disk, stamped "K 33 1934" and set in the top of a concrete post projecting about 2 inches above the ground.
TT-2- WM-1956	980.016	Near NE cor Sec 22-80-23, on NE 94 Ave at intersection of NE 56 St. 300' S and 31' W of and 6.2' lower than the center of intersection, 1' E of fence, in a concrete post, a standard tablet stamped "TT 2 WM 1956"
J-33	938.856	Near 1/4 cor Sec 33-80-23, on NE 78 Ave at railroad crossing. On the SE corner of concrete culvert headwall, 11.3' E of the E rail. A standard disk, stamped "J 33 1934".
H-33	948.128	Near the S 1/4 cor Sec 33-80-23, on NE 70 Ave at railroad crossing. 30' of centerline of road, 9.3' NE of fence corner, 5.1' E of board fence. A standard disk, stamped "H 33 1934" and set in the top of a concrete post projecting about 4 inches above ground.

R-23W

T-80N



T-80-N , R-22-W

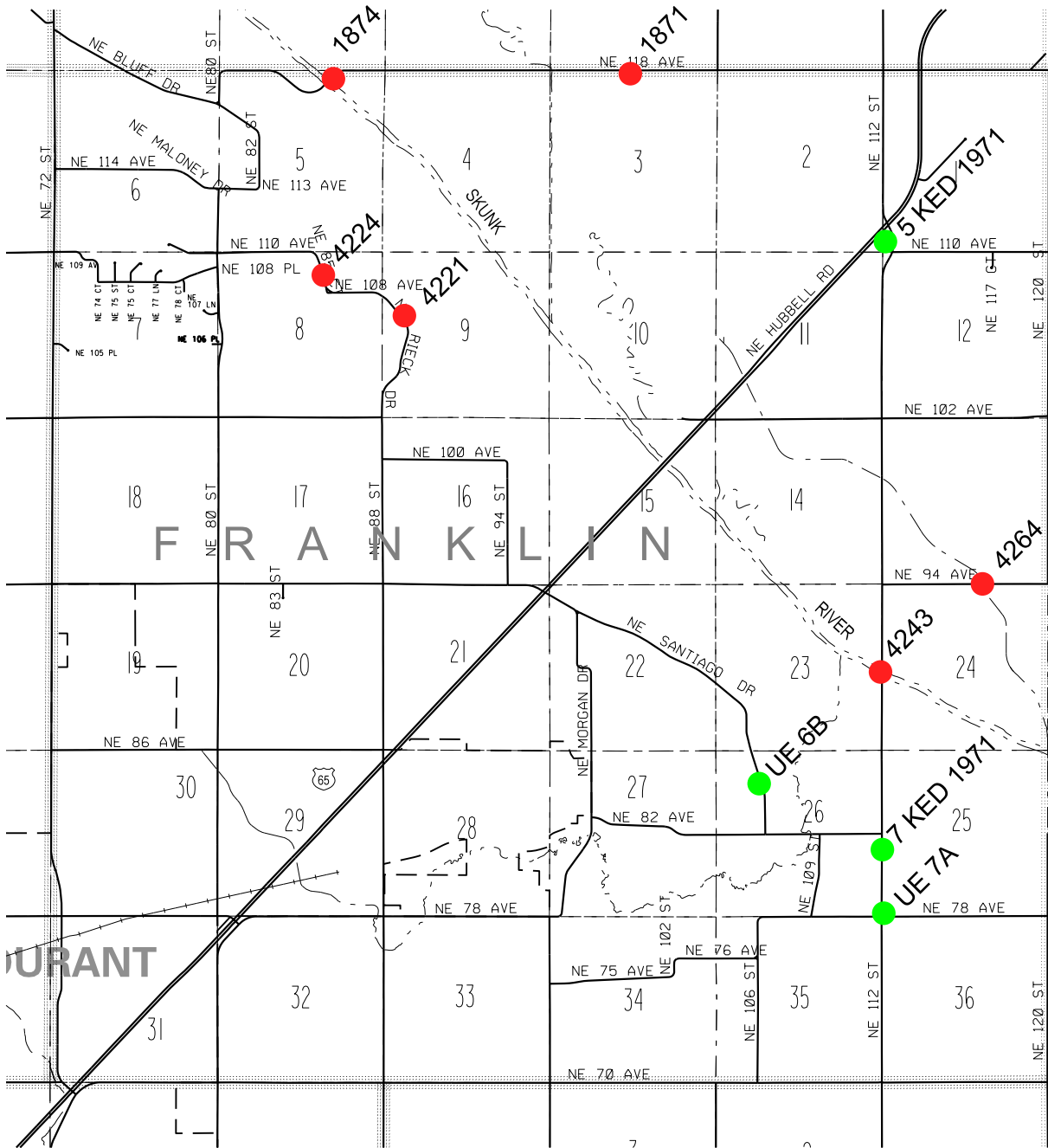
Polk County Bench Marks

BM	Elev.	Description
1874	831.88	Near N 1/4 cor Sec 5-80-22, on NE 118 Ave. An IDOT plug in top of concrete rail at NW corner of bridge over Skunk River.
1871	834.61	Near N 1/4 cor Sec 3-80-22, on NE 118 Ave. An IDOT plug in top of N headwall of RCB culvert.
4224	853.78	In NE 1/4 Sec 8-80-22, on NE 85 Ct, 575' N of NE 108 Ave. Top of curb at NE corner of bridge.
4221	840.88	In NW 1/4 Sec 9-80-22, on NE Rieck Dr, 0.6 miles N of NE 102 Ave. Cut "X" on top of NE wing of bridge.
4264	807.84	In NE 1/4 cor Sec 14-80-22, on NE 94 Ave, approx. 540' E of N 1/4 corner. Top of curb on SE corner of bridge.
4243	815.72	Near E 1/4 cor Sec 23-80-22, on NE 112 St. IDOT plug in top of concrete rail on NW corner bridge over Skunk River

USGS Bench Marks

BM	Elev.	Description
5 KED 1971	846.958	In SE 1/4 Sec 2-80-22, on NE 112 St, SE of intersection of Hwy 65. S end of W headwall of RCB culvert, a standard tablet stamped "5 KED 1971" painted.
UE 6B	869.37	In NW 1/4 Sec 26-80-22, on NE Santiago Dr at entrance of Franklin Twp Cemetery. 8' N, 52' E of and 0.7' lower than road at cemetery entrance. SW corner of concrete base of N stone gate post at main entrance, chiseled square, not painted.
7 KED 1971	857.929	In SE 1/4 Sec 26-80-22, on NE 112 St, 596' S, 20' E of and 6.8' lower than intersection of NE 82 Ave. Center of E headwall of 4' concrete box culvert, a standard tablet stamped "7 KED 1971", painted.
UE 7A	910.640	Near NW cor Sec 36-80-22, on NE 78 Ave, 38' E of and 1.4' lower than intersection of NE 112 St. On S end of a 2' concrete pipe culvert, a chiseled square, painted.

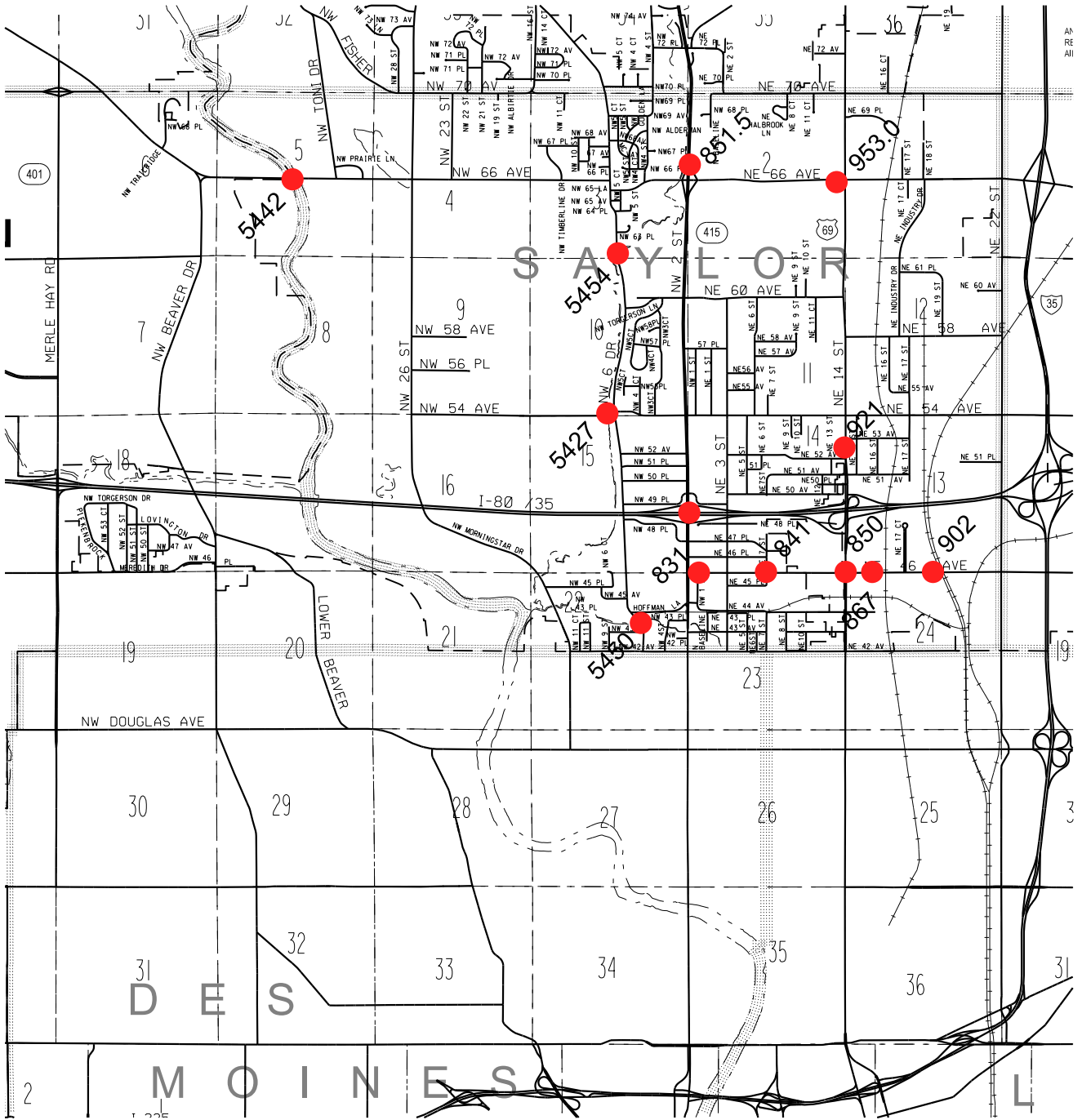
R-22W



T-80N

R-24W

T-79N



T-79-N , R-23-W

Polk County Bench Marks

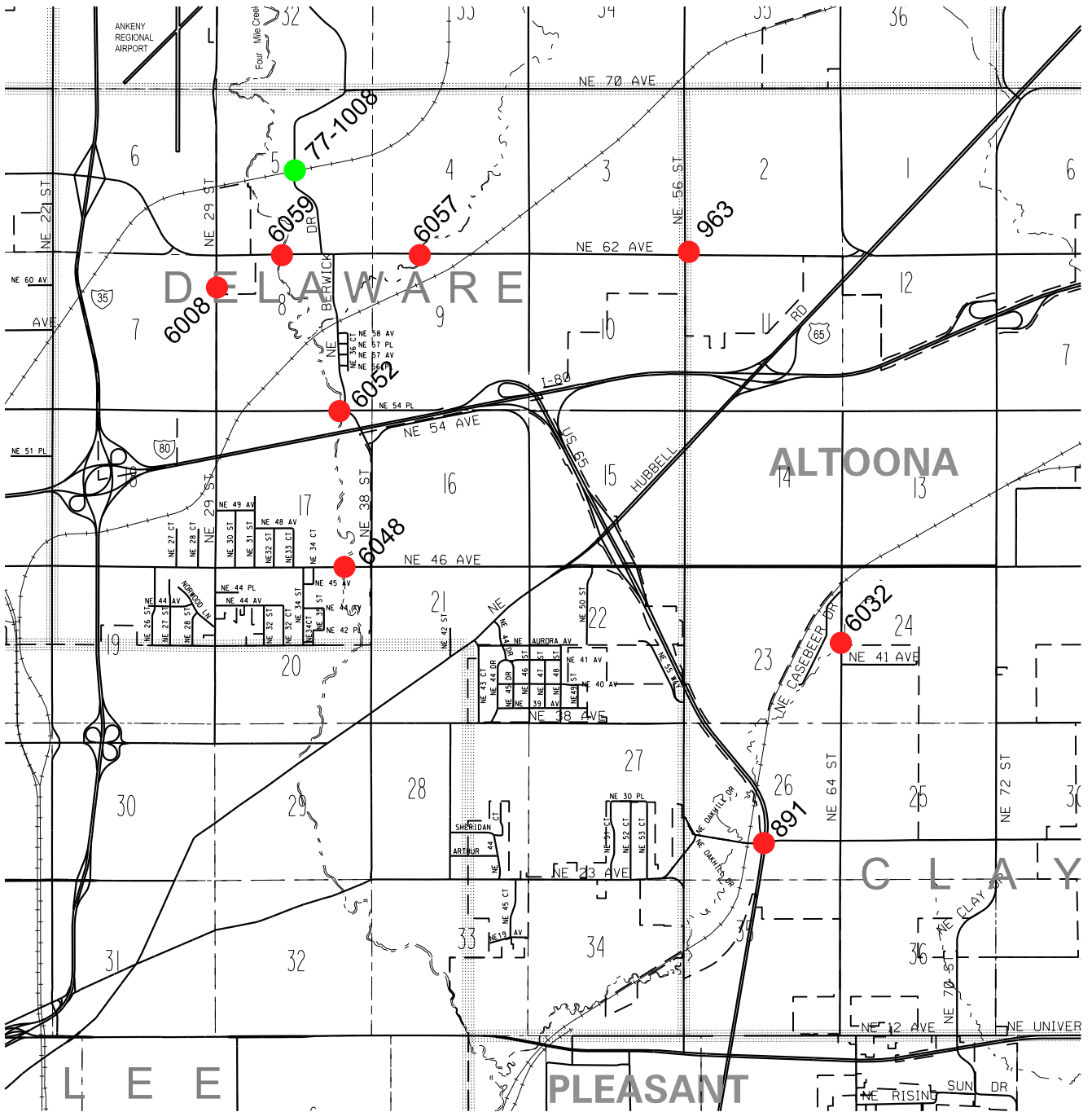
BM	Elev.	Description
6008	855.54	In NE 1/4 of Sec 7-79-23, on NE 29 St., 1000' S of NE 62 Ave. An IDOT plug in the W headwall of a RCB culvert.
6052	844.01	In SE 1/4 of Sec 8-79-23, on NE 54 Ave, 300' W of NE Berwick Dr. An IDOT plug in top of concrete rail at NW corner of bridge over Fourmile Creek.
6048	842.88	In SE 1/4 of Sec 17-79-23, on NE 46 Ave, 800' W of NE 38 St. An IDOT plug in top of concrete rail at NE corner of bridge over Fourmile Creek.
6059	861.94	In SW 1/4 of Sec 5-79-23, on NE 62 Ave, 1/4 mile W of Berwick Dr (North). A cut "X" on top of the concrete curb at SW corner of bridge over Fourmile Creek.
6057	863.07	In SW 1/4 of Sec 4-79-23, on NE 62 Ave, 1/2 mile E of NE Berwick Dr (South). A cut "X" on top of the concrete curb at SE corner of bridge over Muchikinock Creek.
963	963.038	Near SW Cor Sec 2-79-23, in NE quadrant of intersection of NE 56 St & NE 62 Ave. Top of NW bolt on high transmission pole base.
891	890.790	In SE 1/4 Sec 26-79-23, on US Hwy 65. An IDOT plug on NW corner of Southbound bridge over NE 27 Ave.
6032	886.61	In NW 1/4 of Sec 24-79-23, on NE 64 St., 725' N of NE 41 Ave. Top center of East headwall of RCB culvert on East Fourmile Creek.

USGS Bench Marks

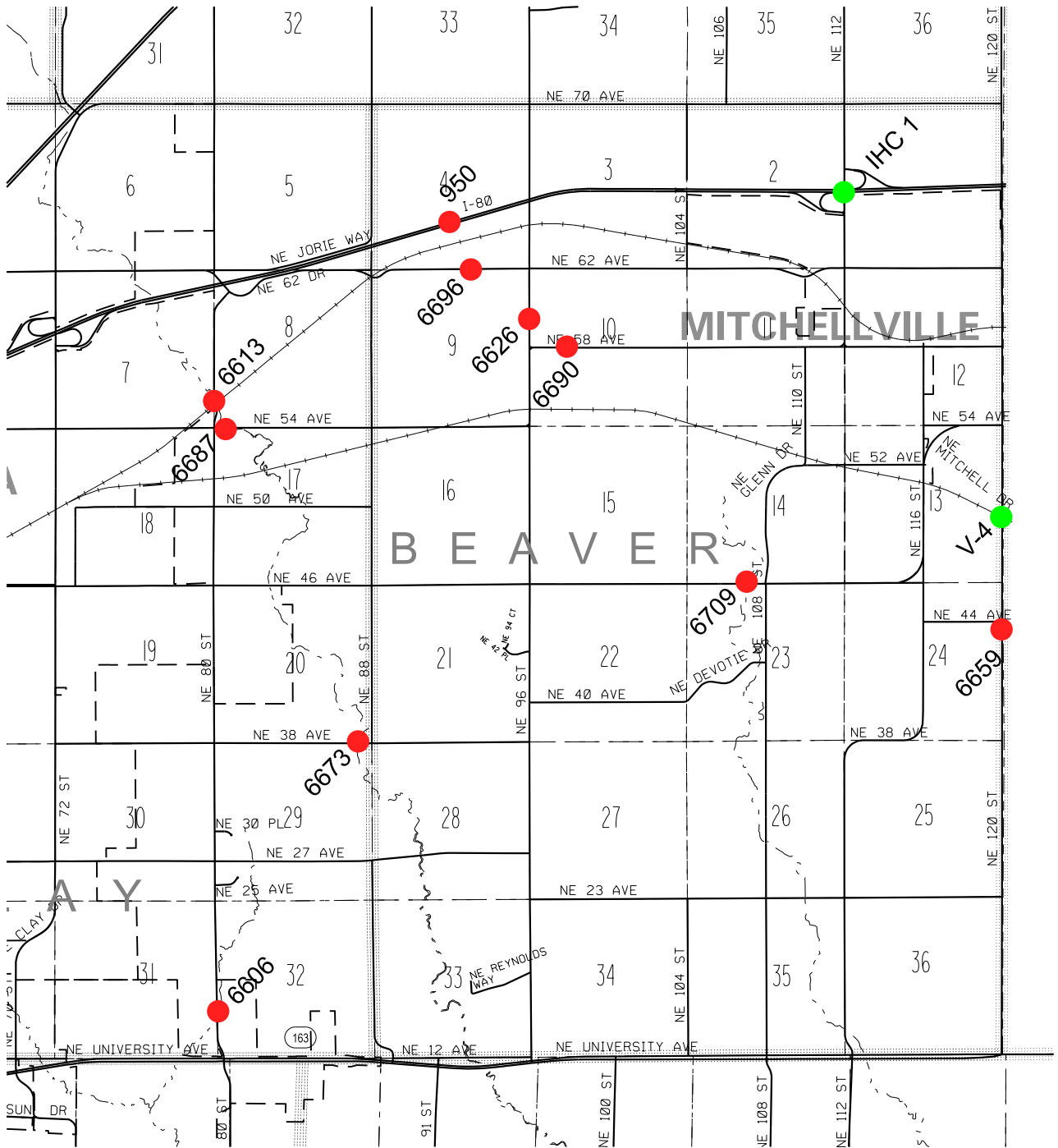
BM	Elev.	Description
77-1008	901.481	Near the Center of Sec 5-79-23, on NE Berwick Dr., at the wood bridge overpass on a railroad. 12' E of bridge pile N of tracks, 25.4' NE of bridge pile S of tracks, 6' N of N rail. A State Survey Standard Disk, stamped "77-1008" and set in the top of a concrete post.

R-23W

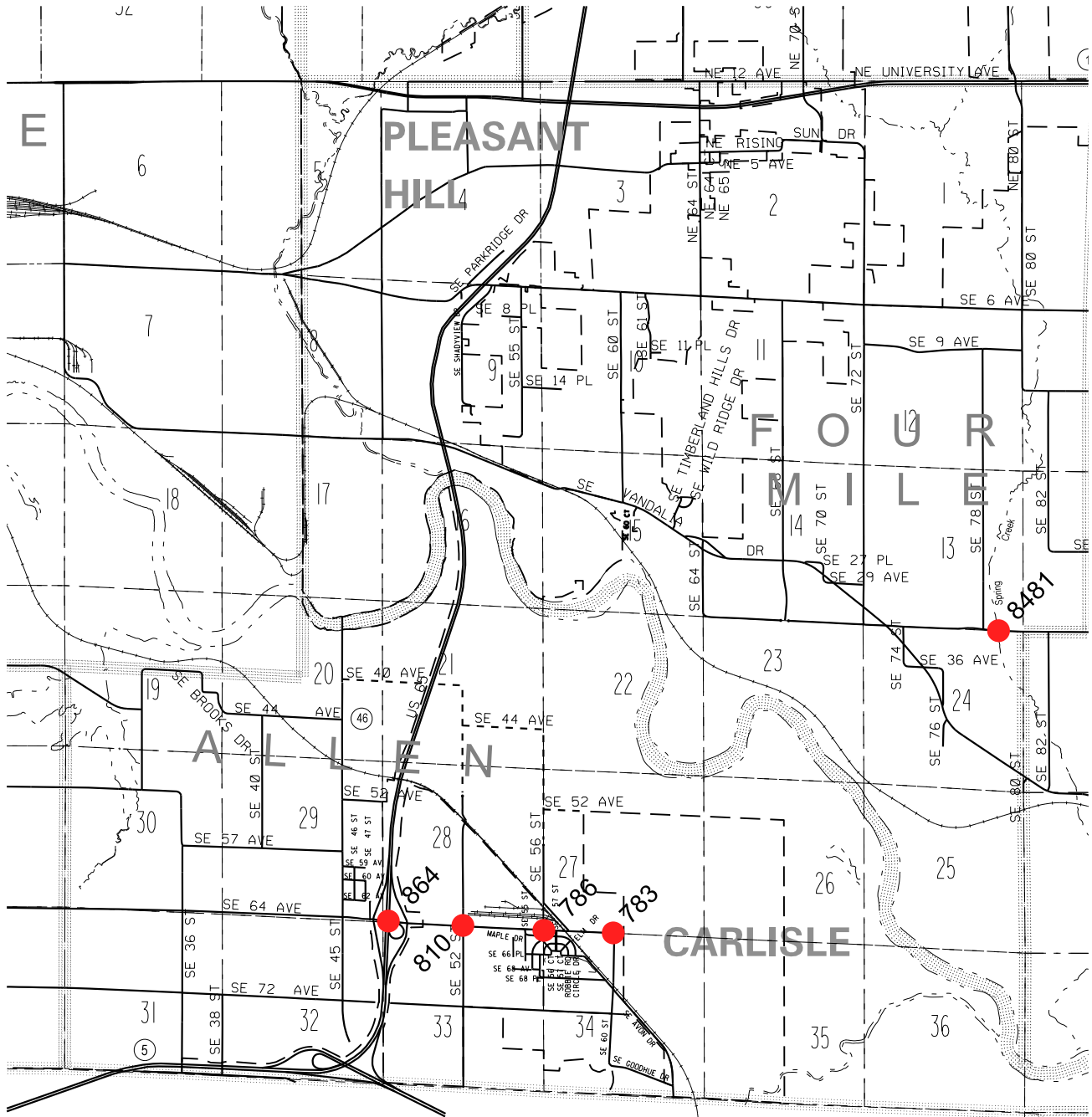
T-79N



R-22W



T-79N



PLEASANT HILL

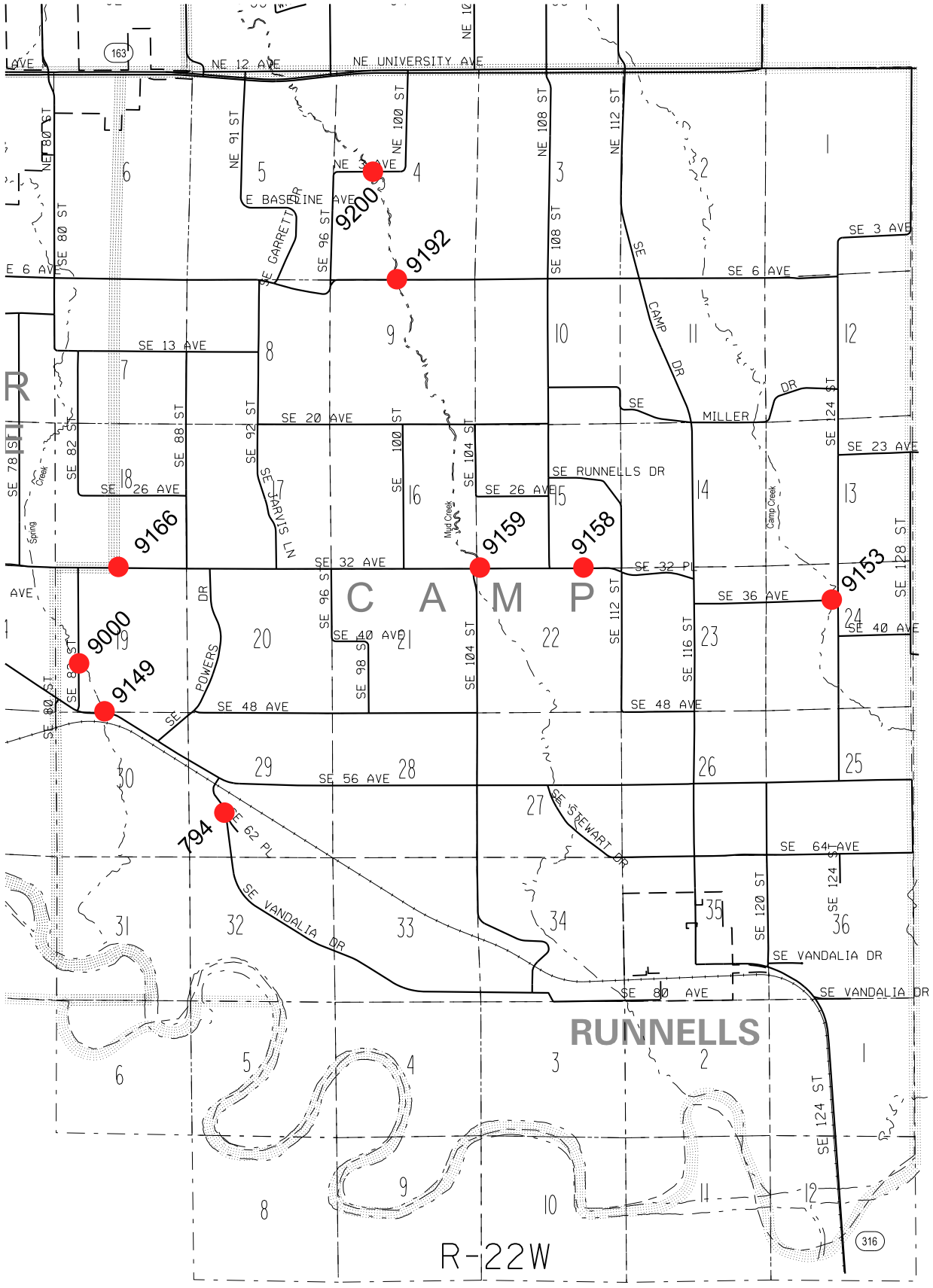
FOUR MILE

ALLEN

CARLISLE

R-23W

T-78N



T-78N

R-22W

RUNNELLS

CAMP

316

163

R