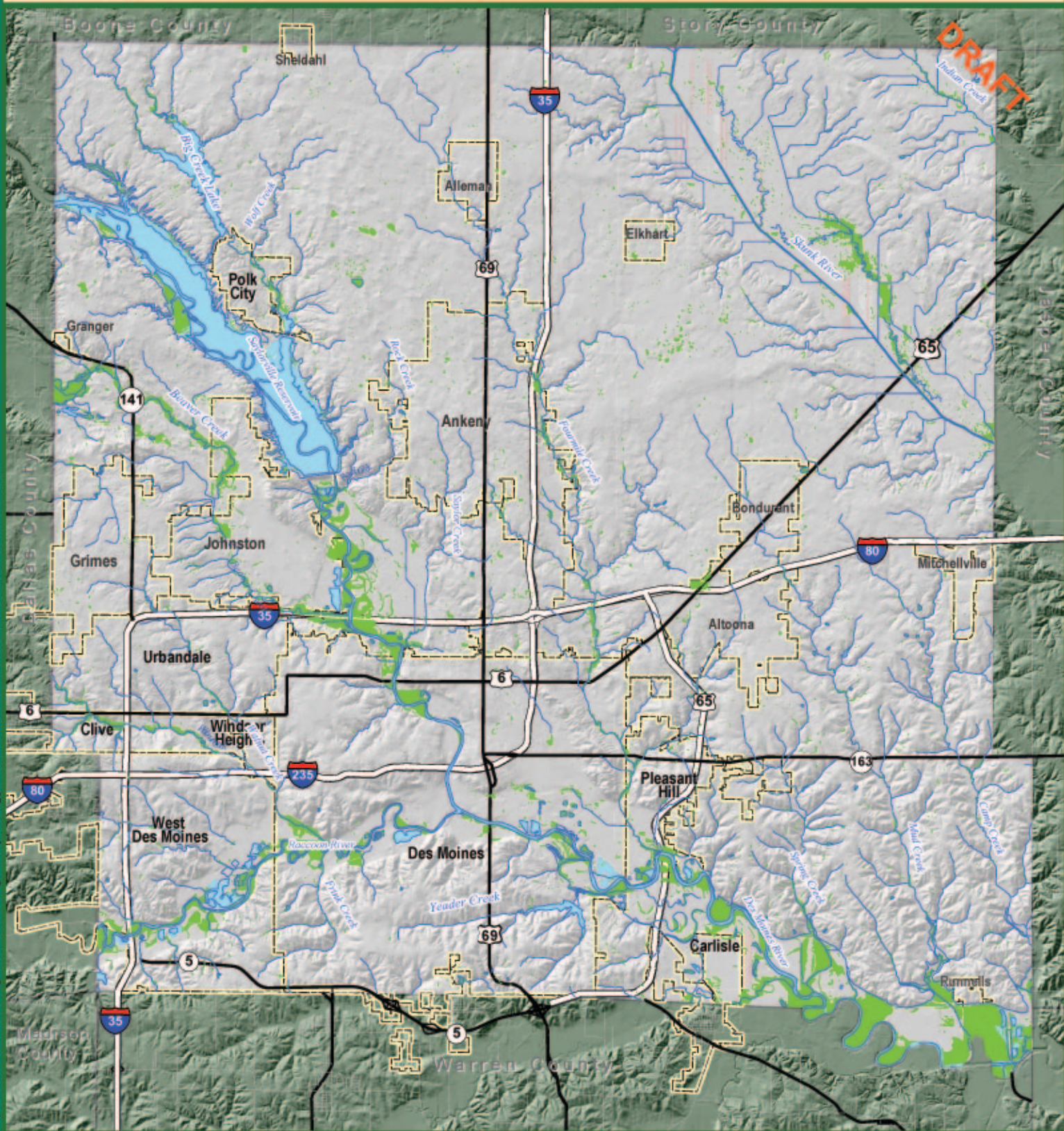






**DRAFT**



URS Corporation N:\31809699\MapDocuments\Existing Conditions\FigE1-Hydrology.mxd Date: 11/11/2004 4:11:28 PM Name: csers

**Hydrologic Features**

-  Lakes and Ponds
-  Wetlands
-  Rivers and Streams
-  Municipal Boundary



**Figure 1.8.A**