



Central Iowa COVID19 Update

Monday, January 25, 2021



Statistical Consulting

Dr. Meg Schaeffer





Quick Stats¹

	Polk County	Iowa
7d Lab Test Positivity	11.2%	8.5%
14d Lab Test Positivity	13.2%	11.0%
Total cases per 100,000 the last 7d	254	218
Total cases per 100,000 the last 14d	565	482
Average daily cases the last 7d	183	1003
Average 7-day new cases per 100,000	37	32

¹All data are sourced from <https://coronavirus.iowa.gov/pages/case-counts> with previous days refreshed daily. When recent data are unavailable, data from <https://github.com/nytimes/covid-19-data> may be used. Population of Polk County used is 490,161. Population of Iowa used is 3.155 million. Averages and percent positivity are subject to change with retrospectively refreshed data.

Critical Points, Media, and Research

- Polk County cases remain stable and hospitalizations are moderate. Iowa cases are decreasing at a rate faster than Polk County. Percent positivity in Polk County is holding around 13%.
- Influenza activity remains extremely low. [CADE - Iowa Flu Reports](#)
- UK variant took approximately one month to become the dominant strain in the fall. [Eurosurveillance | Early transmissibility assessment of the N501Y mutant strains of SARS-CoV-2 in the United Kingdom, October to November 2020](#)
- A US genomic variant emerged early in the pandemic and has been the dominant strain since. [Emergence and Evolution of a Prevalent New SARS-CoV-2 Variant in the United States | bioRxiv](#)
- Rapid test used in drive through clinic in MA has strong sensitivity and specificity. [Performance and Implementation Evaluation of the Abbott BinaxNOW Rapid Antigen Test in a High-throughput Drive-through Community Testing Site in Massachusetts | medRxiv](#)
- Extremely limited secondary spread among 9,000 NC students in 11 schools. [peds.2020-048090.full.pdf \(aappublications.org\)](#)

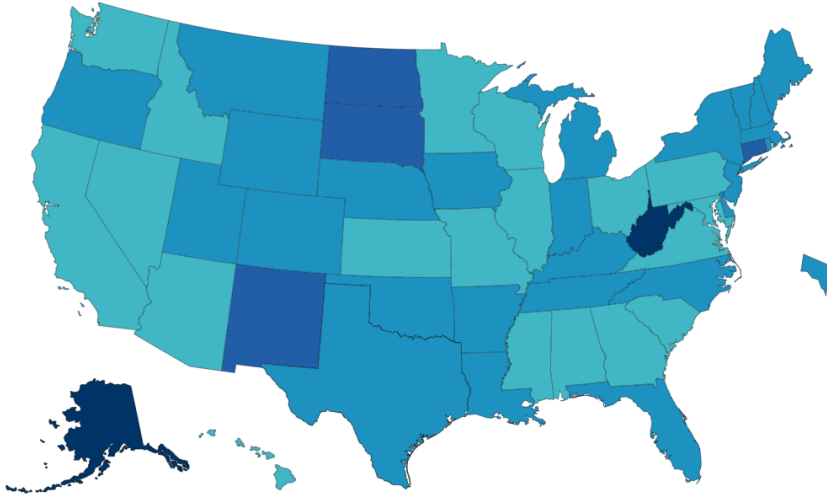
Vaccine

- [AstraZeneca says Covid-19 vaccine deliveries to Europe will be 'lower than expected' \(france24.com\)](#)
- [Modena And Pfizer Behind On Supplying COVID-19 Vaccine: Shots - Health News: NPR](#)
- The case for vaccinating children for COVID-19. [Vaccinating Children against Covid-19 — The Lessons of Measles | NEJM](#)
- Allergic reactions to the COVID-19 vaccines. [Maintaining Safety with SARS-CoV-2 Vaccines | NEJM](#)
- [Merck ends COVID-19 vaccine program, cites inferior immune responses | Fox Business](#)
- Preliminary safety and efficacy of the Johnson and Johnson vaccine. <https://www.nytimes.com/interactive/2020/science/coronavirus-vaccine-tracker.html#jnj>
- Vaccination progress in the US. [CDC COVID Data Tracker](#)
- Vaccine development tracker. <https://www.nytimes.com/interactive/2020/science/coronavirus-vaccine-tracker.html>

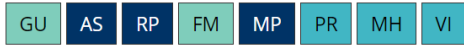


Vaccination Progress

Total Doses Administered Reported to the CDC by State/Territory and for Selected Federal Entities per 100,000



Territories



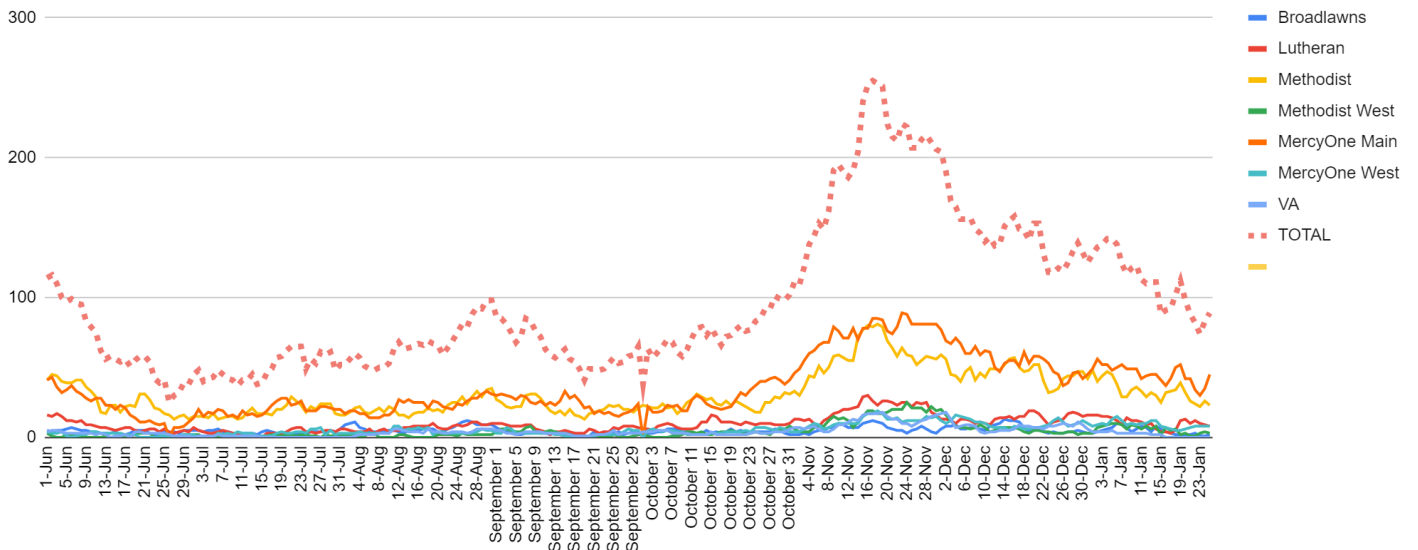
Federal Entities



Total Doses Administered per 100,000



Metro Hospitalizations by Hospital and Total, YTD



Central Iowa COVID19 Update



School Statistics – Polk County (Updated per week on Mondays)

Rate of Student/Staff Cases Per 1,000												
Week Ending	1-Nov	8-Nov	15-Nov	22-Nov	29-Nov	13-Dec	20-Dec	27-Dec	10-Jan	17-Jan	24-Jan	
DMPS*	0.2	4.0	0.5	0.5	0.2	0.7	0.7	0.4	4.0	1.9	2.6	
Ankeny	3.8	3.8	4.3	4.3	4.5	3.3	1.9	1.8	5.9	3.8	3.1	
Waukee	5.8	10.3	9.4	6.5	4.6	3.5	1.7	1.7	4.5	5.0	2.4	
WDM	2.8	5.7	11.0	4.7	1.1	2.7	1.9	0.6	4.0	4.2	1.6	
Johnston	6.3	8.3	10.4	7.1	5.4	2.3	1.7	0.3	4.6	3.4	2.1	
SE Polk	4.7	5.0	8.3	7.9	7.7	3.0	4.6	2.7	3.4	5.0	3.9	
Urbandale	1.8	2.0	10.8	8.5	5.8	3.5	3.5	2.0	6.0	3.0	2.5	
DCG		6.0	10.4	9.5	13.3	4.7	0.9	2.8	2.2	2.2	2.5	
Bondurant		8.3	7.9	13.4	13.4	3.7	2.8	7.4	0.0			
North Polk		4.5	5.6	5.6	4.5	1.1	1.7	2.3	3.9	1.1	7.9	
Ballard		0.0	0.0	8.2	0.6	1.2	1.2	0.0	0.0	4.1	1.2	
Saydel		7.5	12.7	3.0	0.0	2.2	3.0	2.2	3.7	3.7	3.7	

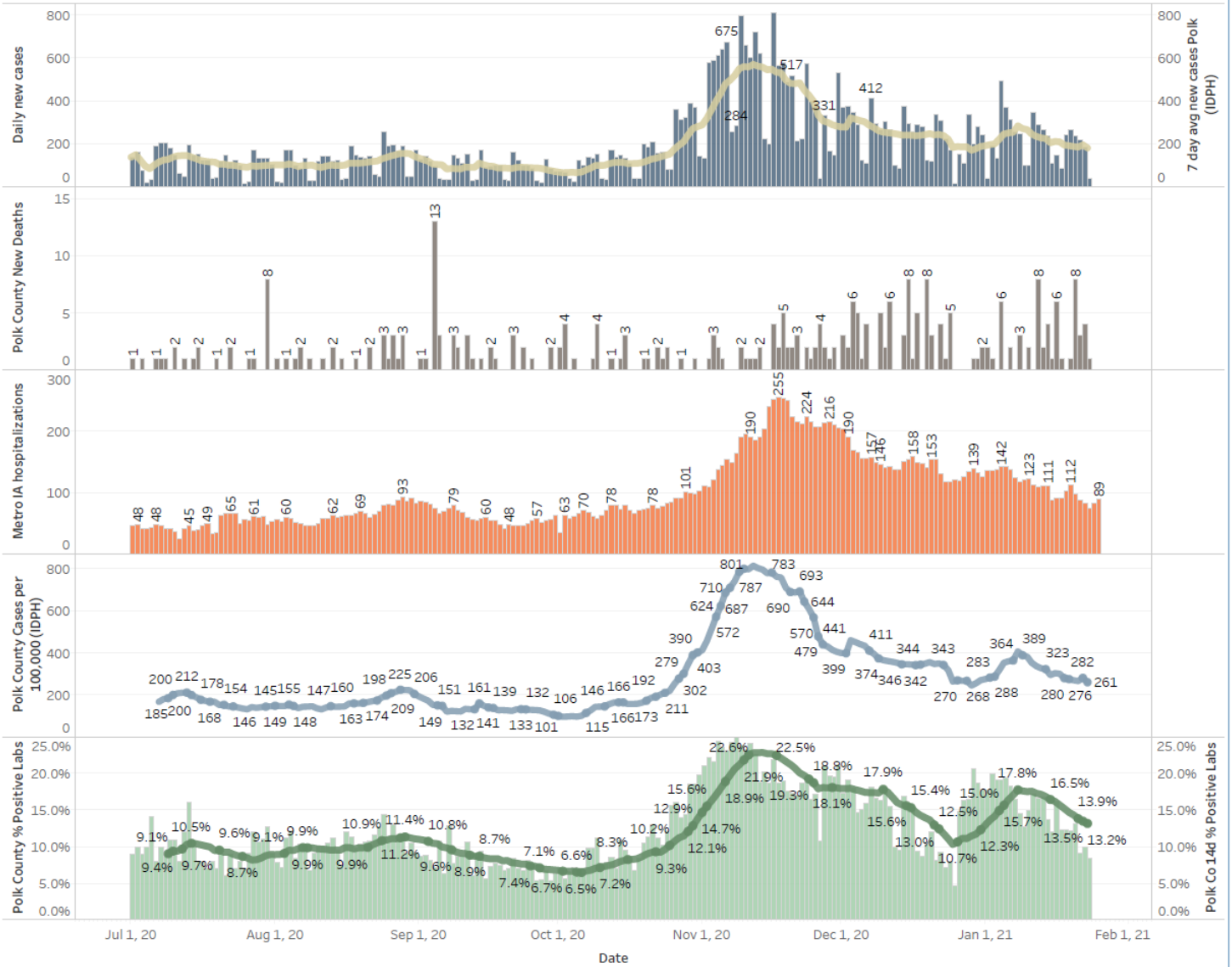
Students/Staff in Quarantine												
Week Ending	1-Nov	8-Nov	15-Nov	22-Nov	29-Nov	13-Dec	20-Dec	27-Dec	10-Jan	17-Jan	24-Jan	
DMPS*	N/A	N/A	N/A	N/A	N/A	N/A	N/A	N/A	N/A	N/A	N/A	
Ankeny	225	225	370	370	273	172	107	87	132	116	125	
Waukee	332	500	575	384	160	76	113	136	156	195	95	
WDM	146	204	239	70	12	38	19	14	114	55	54	
Johnston	586	667	527	318	286	73	78	73	116	147	126	
SE Polk	186	211	307	380	401	126	121	129	89	125	129	
Urbandale	39	97	180	223	179	49	32	34	43	71	78	
DCG		80	159	216	82	69	46	41	33	43	42	
Bondurant		148	160	167	138	97	55	62	<6	N/A	28	
North Polk		103	101	90	61	55	51	46	30	19	35	
Ballard				77	40	34	16		28	12	25	
Saydel		109	88	65	46	30	33	24	39	26	27	
Total	1514	2344	2706	2360	1678	819	671	646	780	809	764	

*DMPS does not report quarantined students; DMPS also reports cases only daily

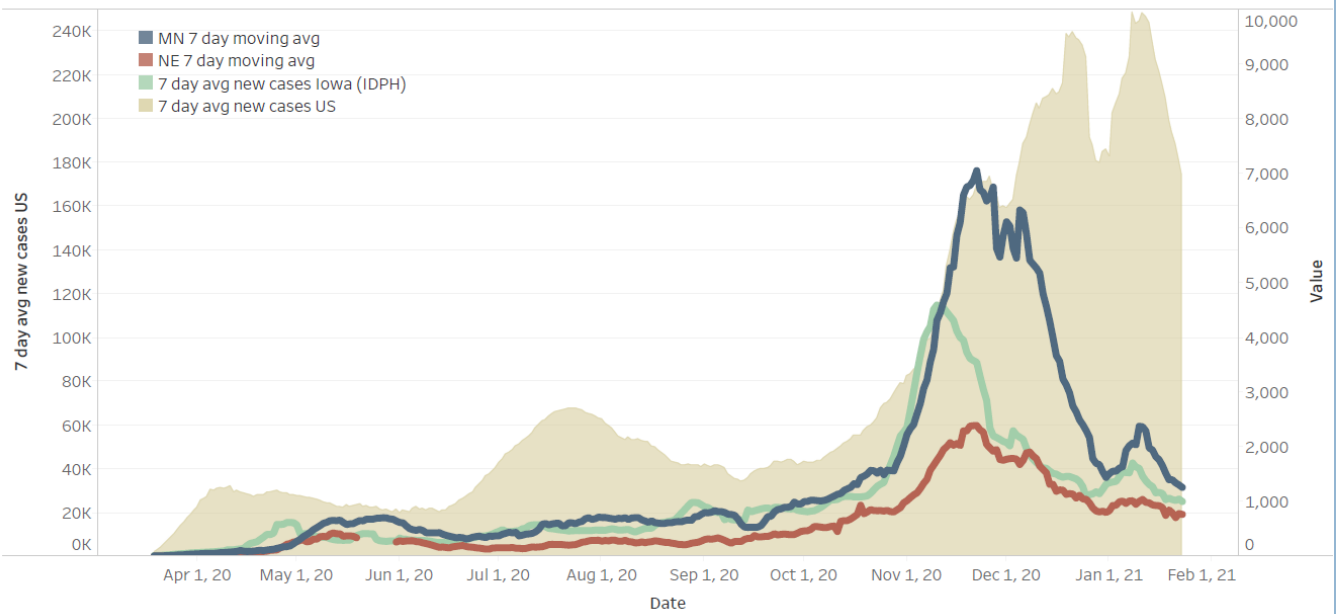
Central Iowa COVID19 Update



Polk County Activity View



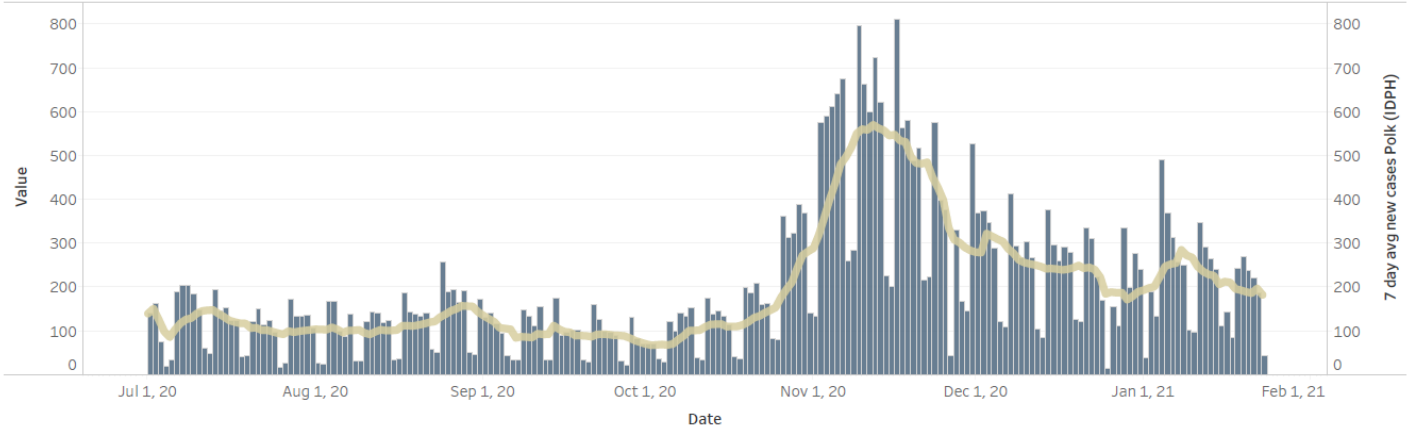
US and Border State Cases



Central Iowa COVID19 Update



Polk County Cases by Day and 7d Moving Average



Iowa Cases by Day and 7d Moving Average

