



Central Iowa COVID19 Update

Wednesday, November 18, 2020



Statistical Consulting

Dr. Meg Schaeffer





Quick Stats¹

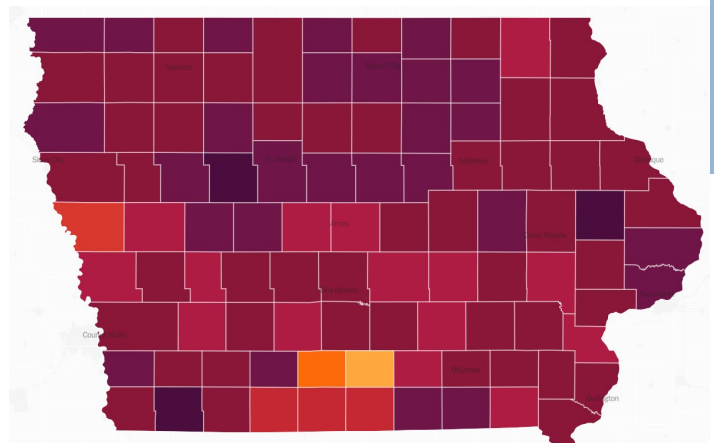
	Polk County	Iowa
7d Lab Test Positivity	19.4%	22.2%
14d Lab Test Positivity	21.4%	22.6%
Total cases per 100,000 the last 7d	760	907
Total cases per 100,000 the last 14d	1501	1813
Average daily cases the last 7d	532	4087
Average 7-day new cases per 100,000	109	130

¹All data are sourced from <https://coronavirus.iowa.gov/pages/case-counts> with previous days refreshed daily. When recent data are unavailable, data from <https://github.com/nytimes/covid-19-data> may be used. Population of Polk County used is 490,161. Population of Iowa used is 3.155 million. Averages and percent positivity are subject to change with retrospectively refreshed data.

Critical Points, Media, and Research

- Cases appear to have stabilized at a very high level. There are no signs of deceleration, only stabilization instead of continued acceleration.
- Polk County and Iowa hospitalizations have also stabilized at a very high level.
- It will take at least four weeks of aggressive mitigation strategies to drive this surge down to a manageable level in time for influenza season and the onset of cold weather.
- The single highest number of deaths statewide were reported with 41 for 11/17.
- Reynolds clarifies mandates for sports and fitness centers. <https://www.kcci.com/article/reynolds-alters-restrictions-for-recreational-activities-fitness-centers/34718177>
- Governor Reynolds issues broad restrictions aimed at reducing COVID-19 spread. <https://www.desmoinesregister.com/story/sports/2020/11/16/iowa-gov-kim-reynolds-fans-required-wear-face-masks-high-school-sports-covid-19-ihsaa/6319967002/>
- Moderna's early vaccine efficacy is above 94%. Moderna is expected to have at least 20 million doses by the end of the year. Their vaccine has three advantages over Pfizer's – its ability to remain at room temperature longer, a shelf life of 30 days, and cold chain requirements of -4°F. <https://www.nytimes.com/2020/11/16/health/Covid-moderna-vaccine.html?action=click&module=Top%20Stories&pgtype=Homepage>
- Early Pfizer vaccine data shows >90% efficacy. Pfizer indicated they will apply for Emergency Use Authorization at the end of November, after which the FDA will take several weeks to review safety data before issuing a decision. Pfizer estimates 15-20 million doses will be available by the end of the year, with each recipient requiring two doses. <https://apnews.com/article/pfizer-vaccine-effective-early-data-4f4ae2e3bad122d17742be22a2240ae8>

	TOTAL CASES	PER 100,000	DAILY AVG. IN LAST 7 DAYS	▼ PER 100,000	WEEKLY CASES PER CAPITA	
					FEWER	MORE
+ North Dakota MAP »	67,236	8,823	1,373.7	180.3		
+ South Dakota MAP »	68,671	7,762	1,421.4	160.7		
+ Iowa MAP »	195,610	6,200	4,195.6	133		
+ Wyoming MAP »	25,275	4,367	744.4	128.6		
+ Minnesota MAP »	242,099	4,293	6,752.9	119.7		
+ Nebraska MAP »	103,805	5,366	2,296	118.7		
+ Wisconsin MAP »	350,665	6,023	6,899	118.5		
+ Montana MAP »	50,650	4,739	1,182.4	110.6		
+ Illinois MAP »	608,056	4,798	12,381.4	97.7		
+ Kansas MAP »	130,715	4,487	2,844	97.6		



[NYT US Activity](#)



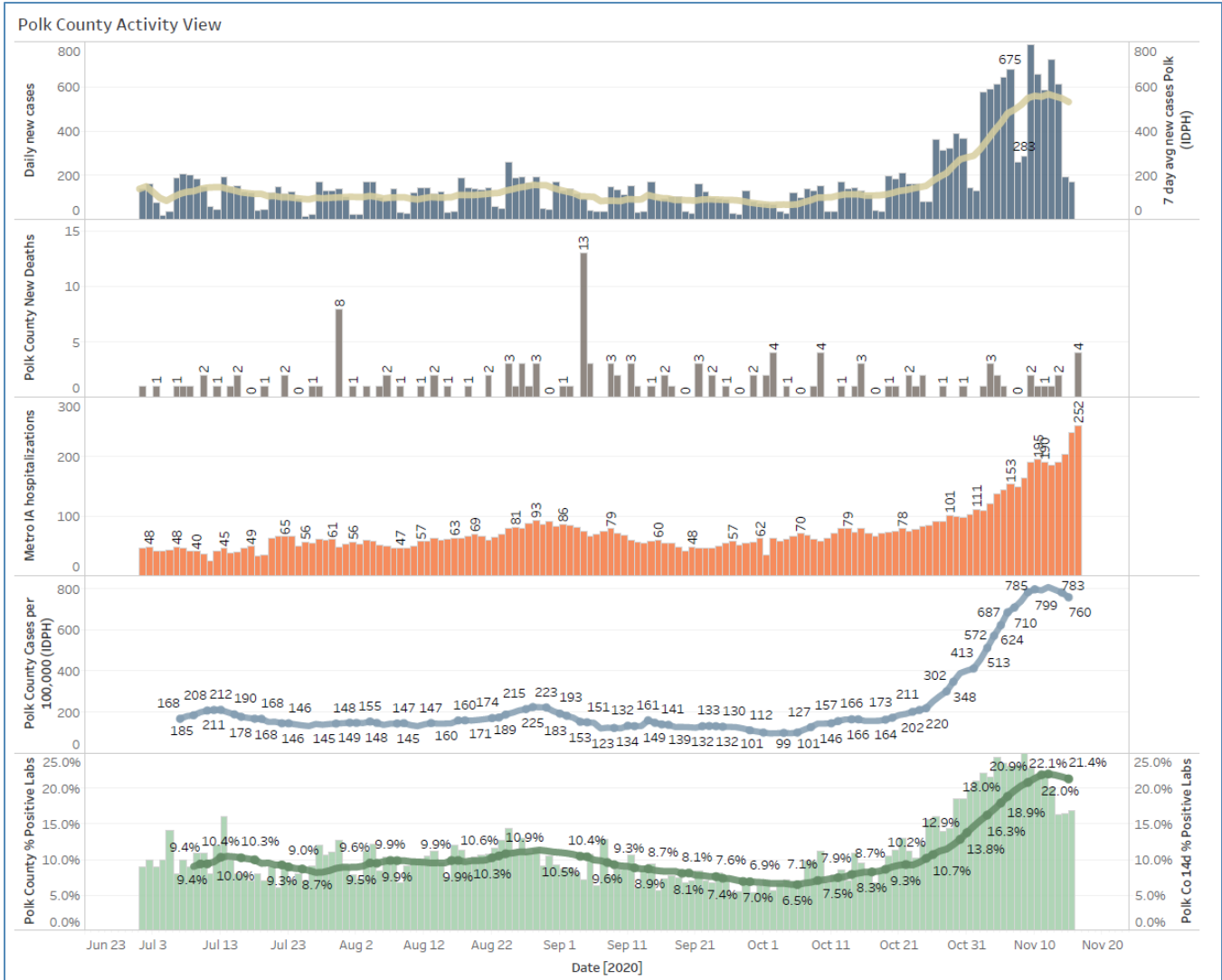
School Statistics – Polk County

New Student/Staff Cases				
Week Ending	1-Nov	8-Nov	15-Nov	22-Nov
DMPS*	5	15	15	15
Ankeny	46	46	52	52
Waukee	67	118	108	90
WDM	25	51	99	15
Johnston	44	58	73	62
SE Polk	33	35	58	51
Urbandale	7	8	43	43
DCG		19	33	33
Bondurant		18	17	21
North Polk		8	10	15
Saydel		10	17	14
Total	227	331	525	411

Students/Staff in Quarantine				
Week Ending	1-Nov	8-Nov	15-Nov	22-Nov
DMPS*	N/A	N/A	N/A	N/A
Ankeny	225	225	370	370
Waukee	332	500	575	503
WDM	146	204	239	43
Johnston	586	667	527	375
SE Polk	186	211	307	362
Urbandale	39	97	180	199
DCG		80	159	159
Bondurant		148	160	149
North Polk		103	101	101
Saydel		109	88	88
Total	1514	2344	2706	2349

*DMPS combines student and staff cases

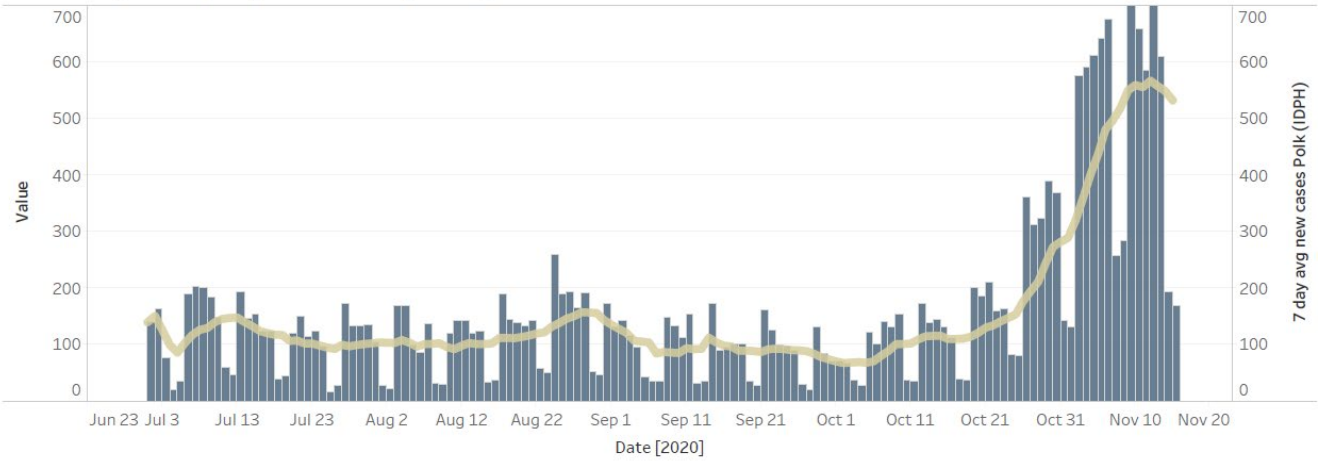
Central Iowa COVID19 Update



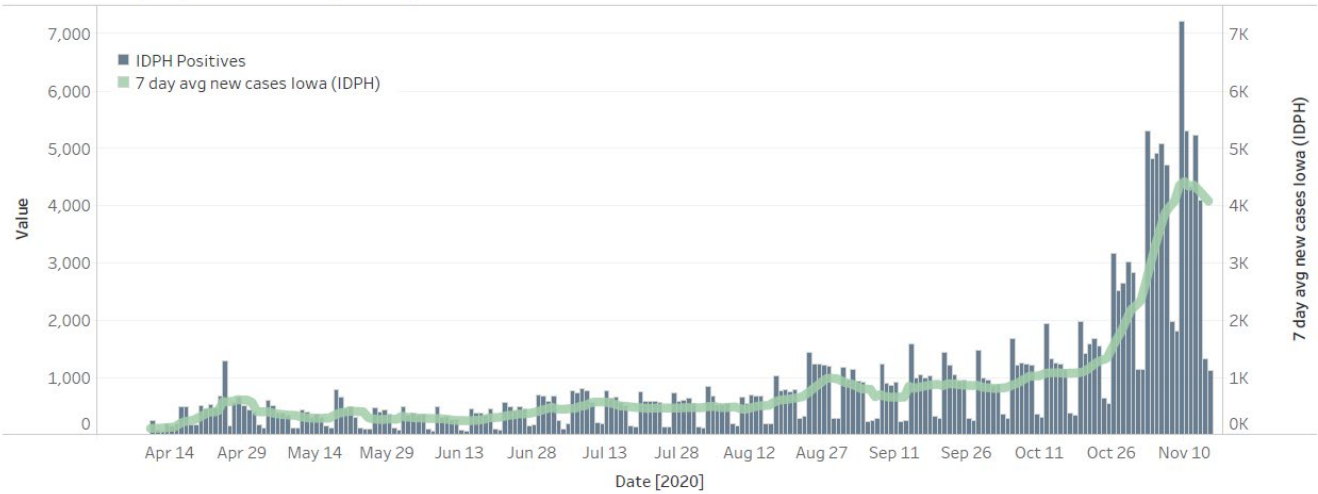
Central Iowa COVID19 Update



Polk County Cases by Day and 7d Moving Average



Iowa Cases by Day and 7d Moving Average



US and Border State Cases

