



Central Iowa COVID19 Update

Tuesday, December 8, 2020



Aperio

Statistical Consulting

Dr. Meg Schaeffer





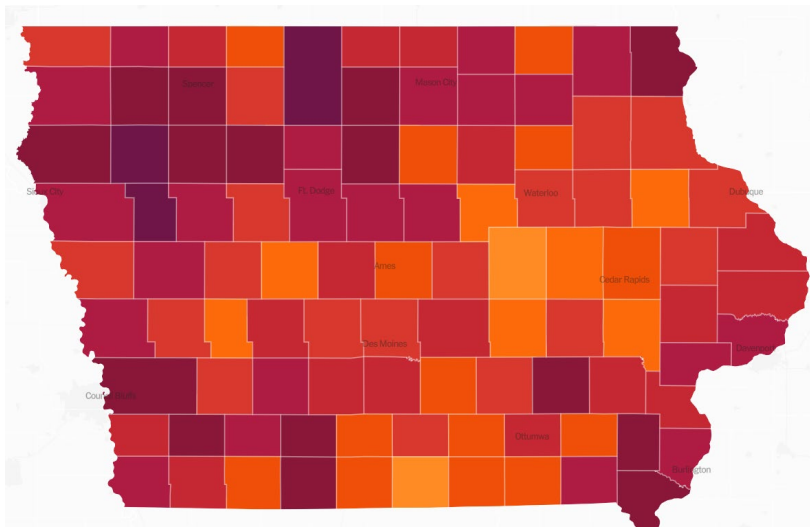
Quick Stats¹

	Polk County	Iowa
7d Lab Test Positivity	13.8%	13.8%
14d Lab Test Positivity	15.5%	16.7%
Total cases per 100,000 the last 7d	422	457
Total cases per 100,000 the last 14d	874	946
Average daily cases the last 7d	304	2113
Average 7-day new cases per 100,000	62	67

¹All data are sourced from <https://coronavirus.iowa.gov/pages/case-counts> with previous days refreshed daily. When recent data are unavailable, data from <https://github.com/nytimes/covid-19-data> may be used. Population of Polk County used is 490,161. Population of Iowa used is 3.155 million. Averages and percent positivity are subject to change with retrospectively refreshed data.

Critical Points, Media, and Research

- Polk County and Iowa cases have stabilized. Case counts are rising again in many parts of the country.
- Flu activity remains minimal.
- IDPH updates death count reporting to include antigen positive cases.
<https://www.kcci.com/article/new-reporting-method-updates-iowas-covid-19-death-toll-to-2898/34899380>
- A study of 30,000 confined college students found 42% reported at least one mental health symptom.
<https://jamanetwork.com/journals/jamanetworkopen/fullarticle/2772154>
- CDC offers alternatives to the 14-day quarantine period depending on local circumstances.
<https://www.cdc.gov/coronavirus/2019-ncov/more/scientific-brief-options-to-reduce-quarantine.html>
What to consider before you travel for the holidays <https://www.nytimes.com/2020/12/05/at-home/coronavirus-quarantine-travel.html>



NYT US Activity



School Statistics – Polk County

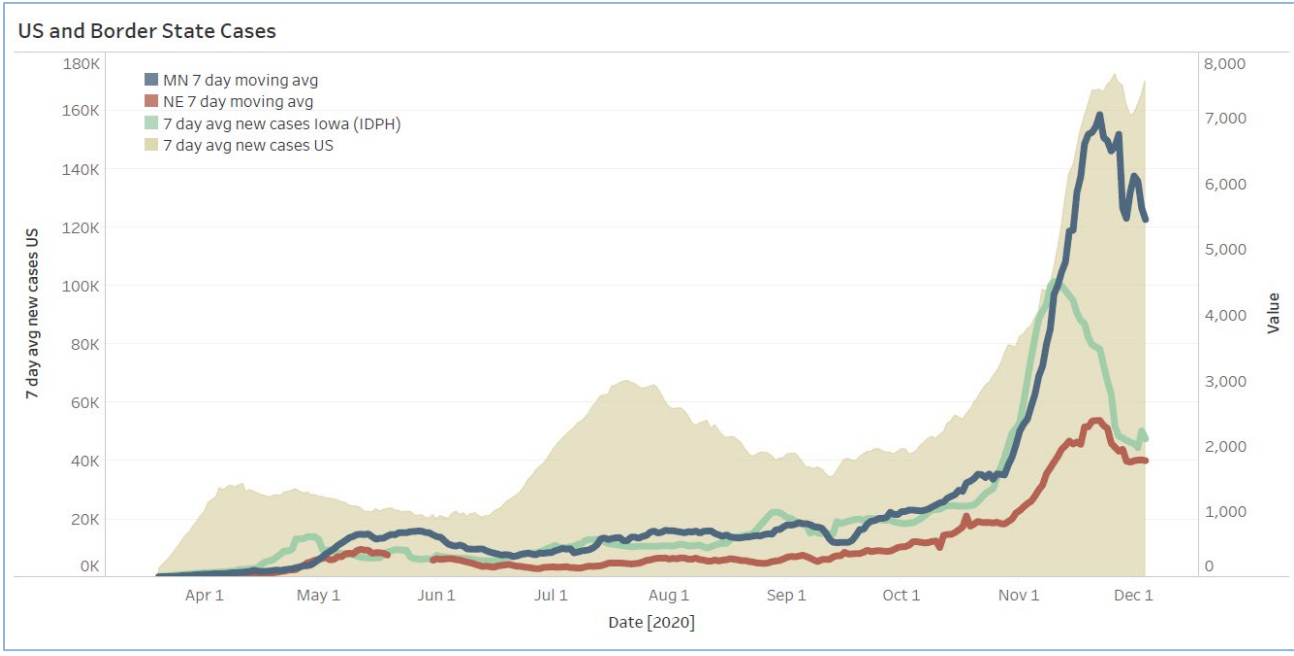
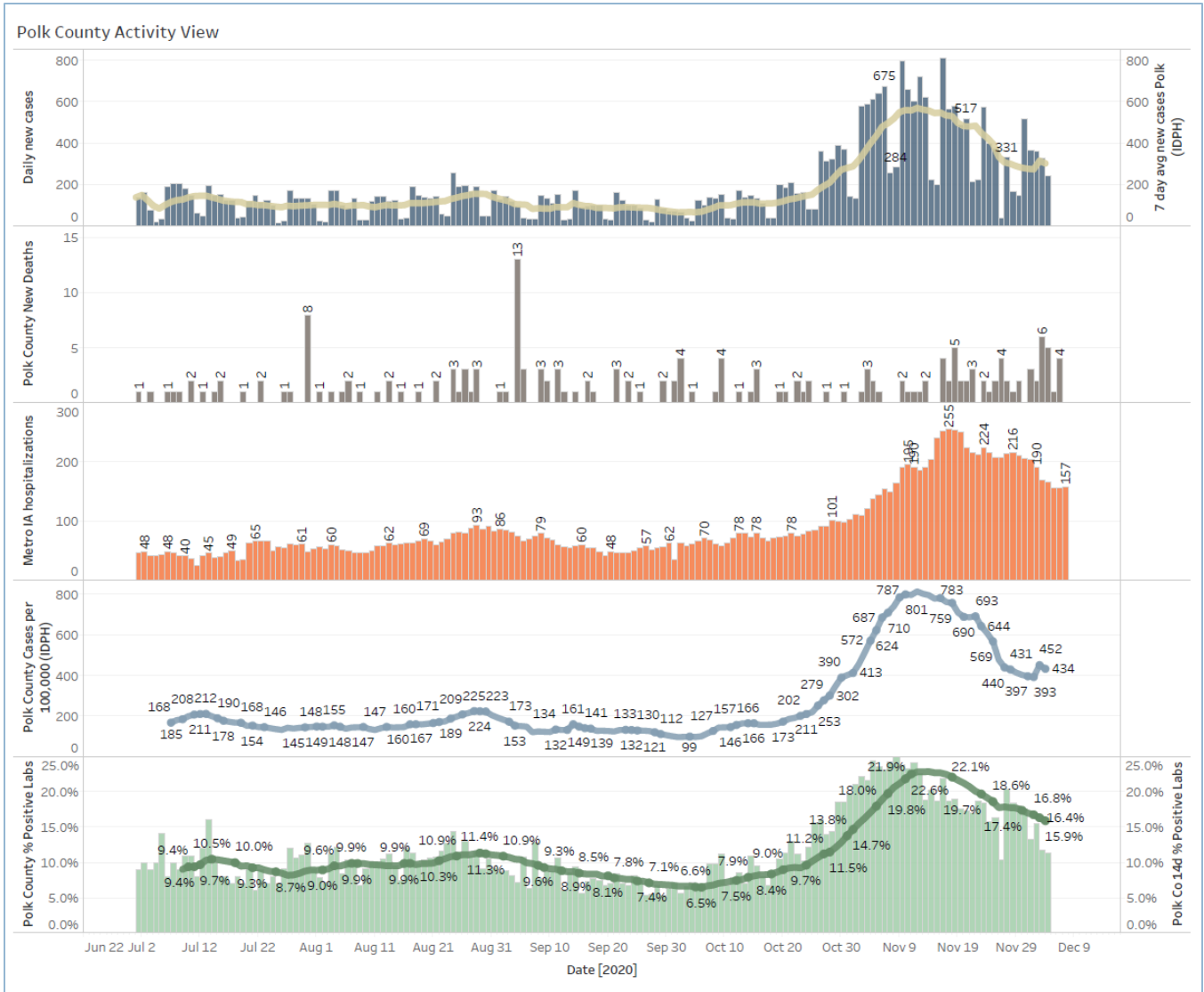
School data will be updated on 12/7

New Student/Staff Cases						
Week Ending	1-Nov	8-Nov	15-Nov	22-Nov	29-Nov	6-Dec
DMPS*	5	15	15	18	5	5
Ankeny	46	46	52	52	54	40
Waukee	67	118	108	75	53	54
WDM	25	51	99	42	10	18
Johnston	44	58	73	50	38	16
SE Polk	33	35	58	55	54	22
Urbandale	7	8	43	34	23	23
DCG		19	33	30	42	21
Bondurant		18	17	29	29	0
North Polk		8	10	10	8	1
Ballard				14	1	1
Saydel		10	17	4	0	4
Total	227	331	525	413	317	205

Students/Staff in Quarantine						
Week Ending	1-Nov	8-Nov	15-Nov	22-Nov	29-Nov	6-Dec
DMPS*	N/A	N/A	N/A	N/A	N/A	N/A
Ankeny	225	225	370	370	273	66
Waukee	332	500	575	384	160	67
WDM	146	204	239	70	12	36
Johnston	586	667	527	318	286	92
SE Polk	186	211	307	380	401	224
Urbandale	39	97	180	223	179	94
DCG		80	159	216	82	140
Bondurant		148	160	167	138	N/A
North Polk		103	101	90	61	16
Ballard				77	7	7
Saydel		109	88	65	46	40
Total	1514	2344	2706	2360	1645	782

*DMPS combines student and staff cases and only reports daily

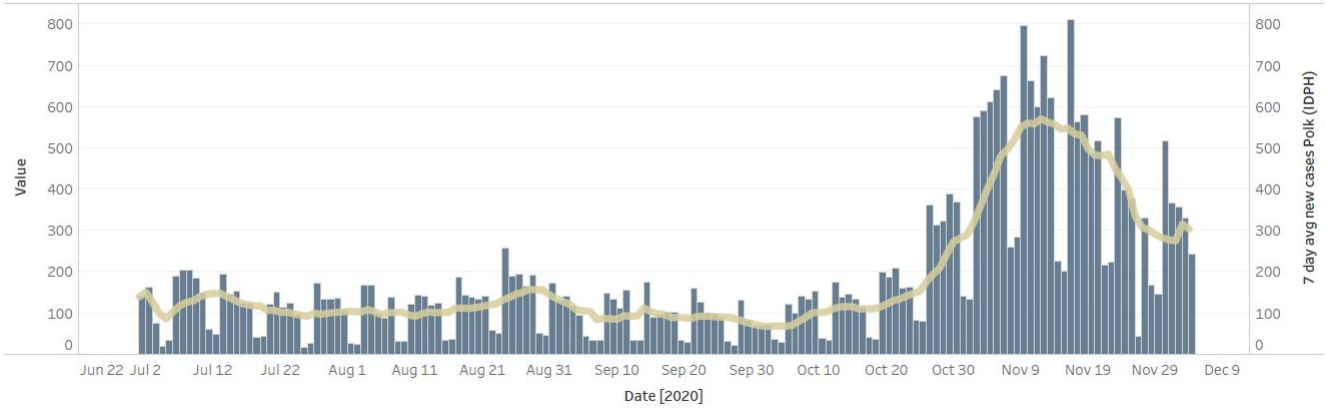
Central Iowa COVID19 Update



Central Iowa COVID19 Update



Polk County Cases by Day and 7d Moving Average



Iowa Cases by Day and 7d Moving Average

