



Central Iowa COVID19 Update

Wednesday, August 25, 2021



Aperio

Statistical Consulting

Dr. Meg Schaeffer





Quick Stats¹

	Polk County	Iowa
Percent of population with 1 dose	5.8%	4.2%
Percent of population with 2 doses	56%	51%
7d Lab Test Positivity	10.9%	8.2%
Total cases per 100,000 the last 7d	191	218
CDC County Transmission Level*	High	
Average daily cases the last 7d	134	984

*[VaccineInformation | Iowa COVID-19 Information](#)

All data are sourced from <https://coronavirus.iowa.gov/pages/case-counts> with previous days refreshed daily. When recent data are unavailable, data from <https://github.com/nytimes/covid-19-data> may be used. Population of Polk County used is 490,161.

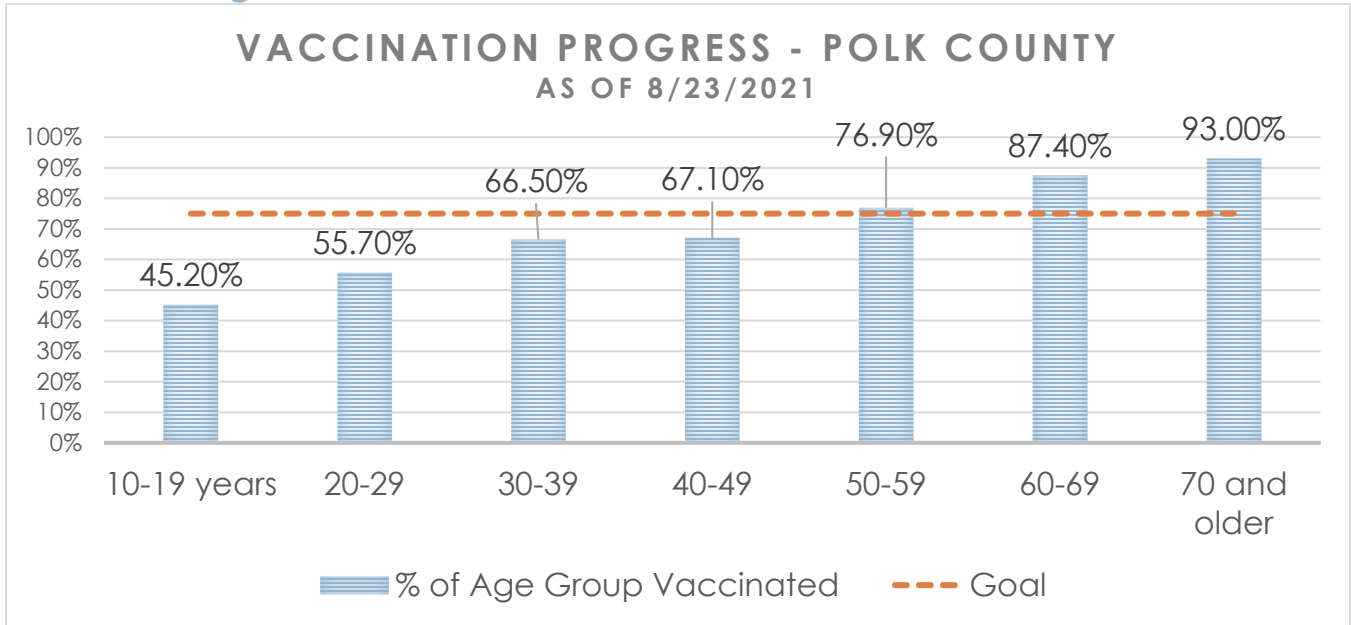
Population of Iowa used is 3.155 million. Averages and percent positivity are subject to change with retrospectively refreshed data.

Critical Points, Media, and Research

- Iowa and Polk County are still aggressively rising and hospitalizations jumped to 110 in the metro over the last week. States including MO and AR who began surging several weeks before Iowa are struggling to decline from peak activity.
- The Advisory Committee on Immunization Practices at CDC meets Monday 8/30 and is expected to provide guidance on third and booster doses.
- [Florida Sees Worst of Pandemic So Far](#)
- [COVID-19 in Iowa: State reporting more than 1,000 new cases per day](#)
- [FDA Approves First COVID-19 Vaccine | FDA](#)
- [Iowa sees surge in COVID-19 testing since TestIowa sites closed](#)
- [Progress of the Delta variant and erosion of vaccine effectiveness, a warning from Utah.](#) Protection against SARS-CoV-2 infection remained high, but appeared to decrease over time following initial vaccinations, in association with the increase in the Delta variant. In addition to increasing vaccination coverage, non-pharmaceutical interventions such as masking, physical distancing, and avoiding crowds and poorly ventilated indoor spaces may be needed to reduce transmission.
- [Immune Correlates Analysis of the mRNA-1273 COVID-19 Vaccine Efficacy Trial.](#) BNT162b2 and mRNA-1273 both appeared to be more effective at preventing severe or fatal COVID-19 than at preventing infection with the Delta variant in a real-world setting.
- [Global Prevalence of Depressive and Anxiety Symptoms in Children and Adolescents During COVID-19: A Meta-analysis.](#) Globally, the high prevalence of children and adolescents experiencing moderate or severe symptoms of depression (1 in 4 youth) or anxiety (1 in 5 youth) during the COVID-19 pandemic warrants resource allocation for essential mental health services.
- In several U.S. states, access to SARS-CoV-2 testing and turnaround times for results improved over the past year. [Improvements in SARS-CoV-2 Testing Cascade in the US: Data from Serial Cross-sectional Assessments | Clinical Infectious Diseases](#)
- [Durability of mRNA-1273 vaccine-induced antibodies against SARS-CoV-2 variants](#)
- [Change in Saliva RT-PCR Sensitivity Over the Course of SARS-CoV-2 Infection | Infectious Diseases | JAMA.](#) Saliva testing might be useful for detecting SARS-CoV-2 in the first 2 weeks after symptom onset, but sensitivity for screening asymptomatic people was <60% at all time points.
- [Kids Under 12 Could Be Eligible For A Vaccine Against COVID This Fall](#)
- [The FDA Is Begging You Not to Take Horse Dewormer for Covid-19](#)
- [Iowa COVID spread substantial in all 99 counties, CDC recommends masks](#)
- [Polk County officials address COVID activity before school starts](#)



Vaccine Progress

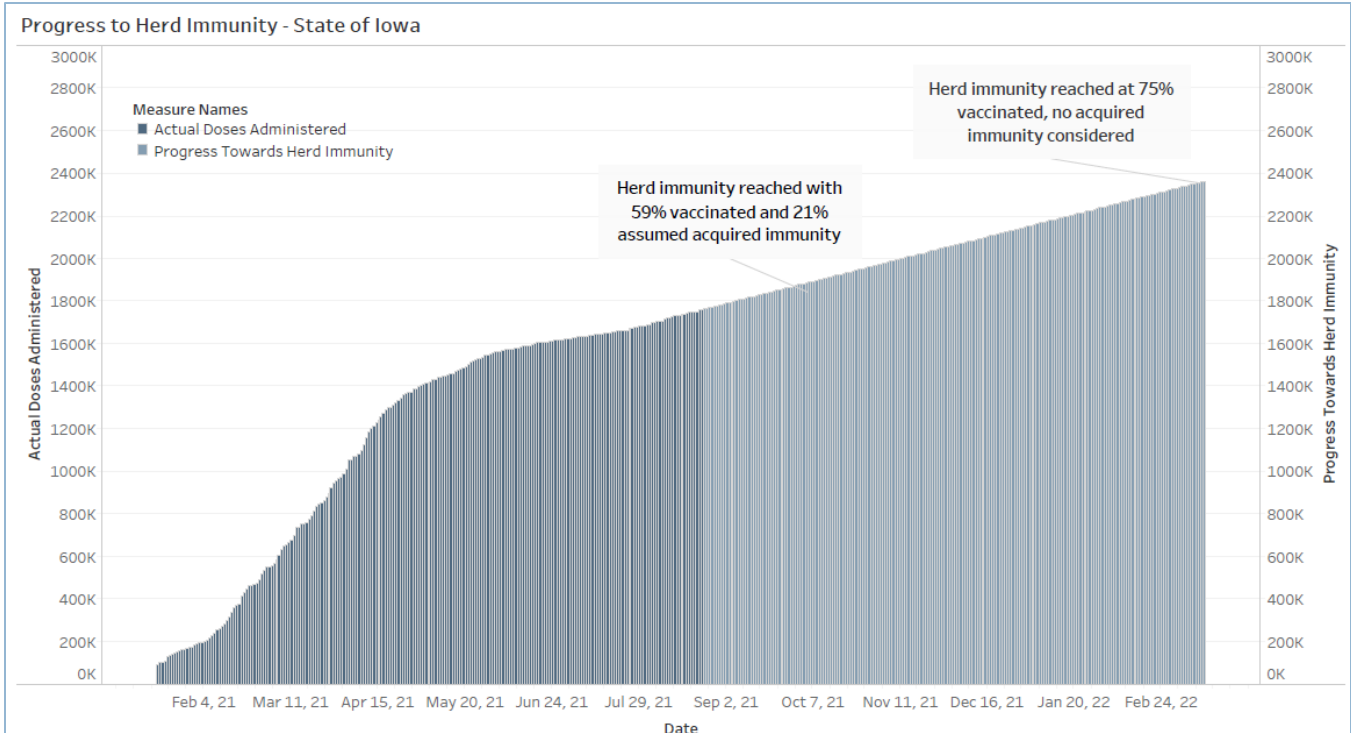


Number of Doses Administered (by date of report)	Initiated Vaccination (1st dose/No Janssen)	Completed Vaccination (2nd dose/Janssen)	Total Polk Co Residents Partially/Fully Vaccinated	Total Population of Polk County (all ages)
536,694	21,978	264,709	286,687	490,161

Age Group	Vaccinated	% Age Group Vaccinated	Estimated Census Population*
10-19 years	28,140	45.20%	62,295
20-29	38,481	55.70%	69,065
30-39	46,560	66.50%	69,982
40-49	43,847	67.10%	65,361
50-59	45,928	76.90%	59,727
60-69	43,071	87.40%	49,269
70 and older	40,660	93.00%	43,742
Total	286,687	68.30%	419,441

*U.S Census Bureau Polk County (2019 1yr estimate). Census predetermined age data includes non-eligible ages 10 and 11 years old.

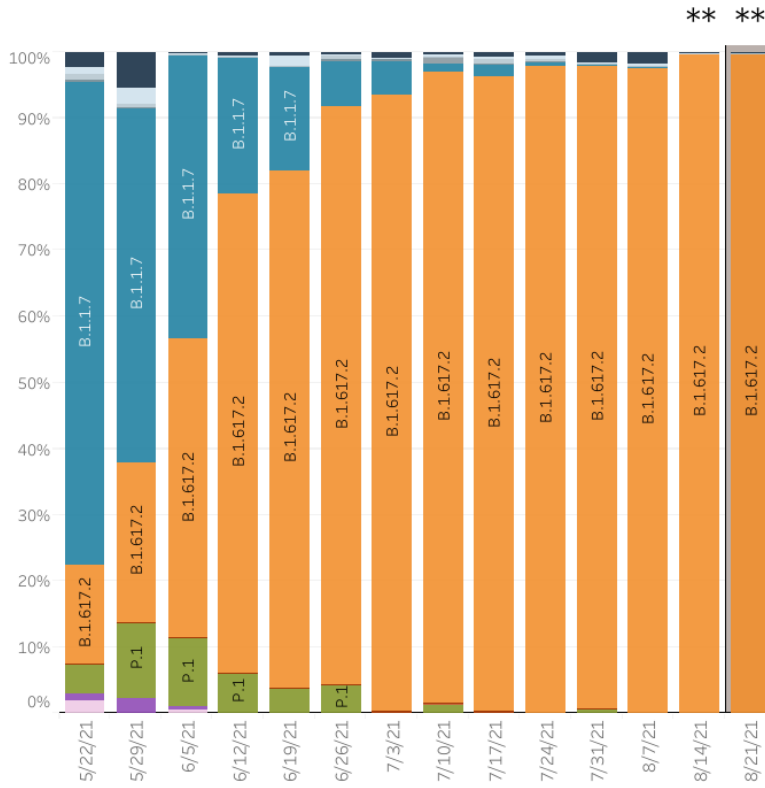
Central Iowa COVID19 Update



Variant Prevalence

HHS Region 7: 5/16/2021 – 8/21/2021

HHS Region 7: 8/15/2021 – 8/21/2021 NOWCAST



Region 7 - Iowa, Kansas, Missouri, and Nebraska

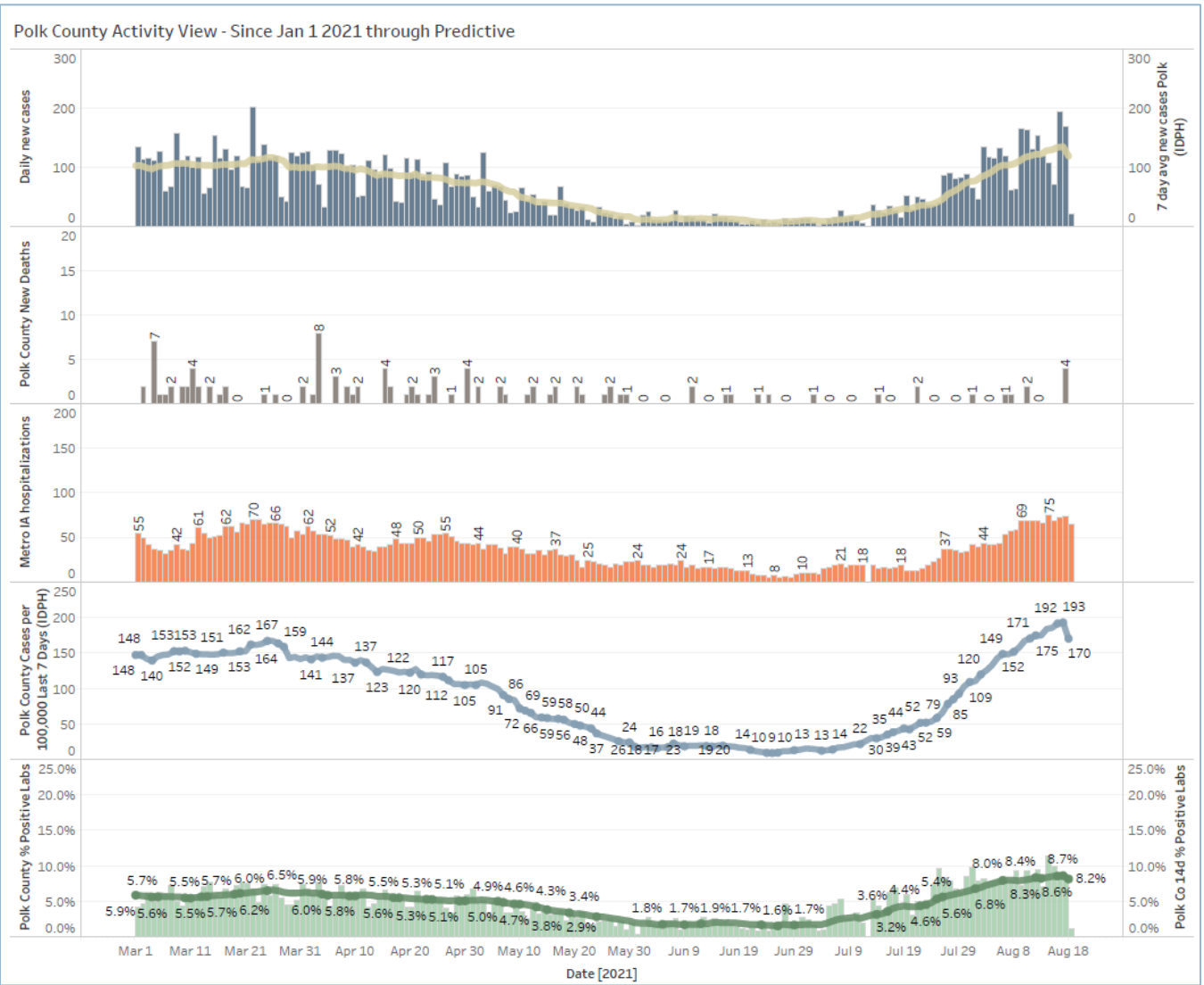
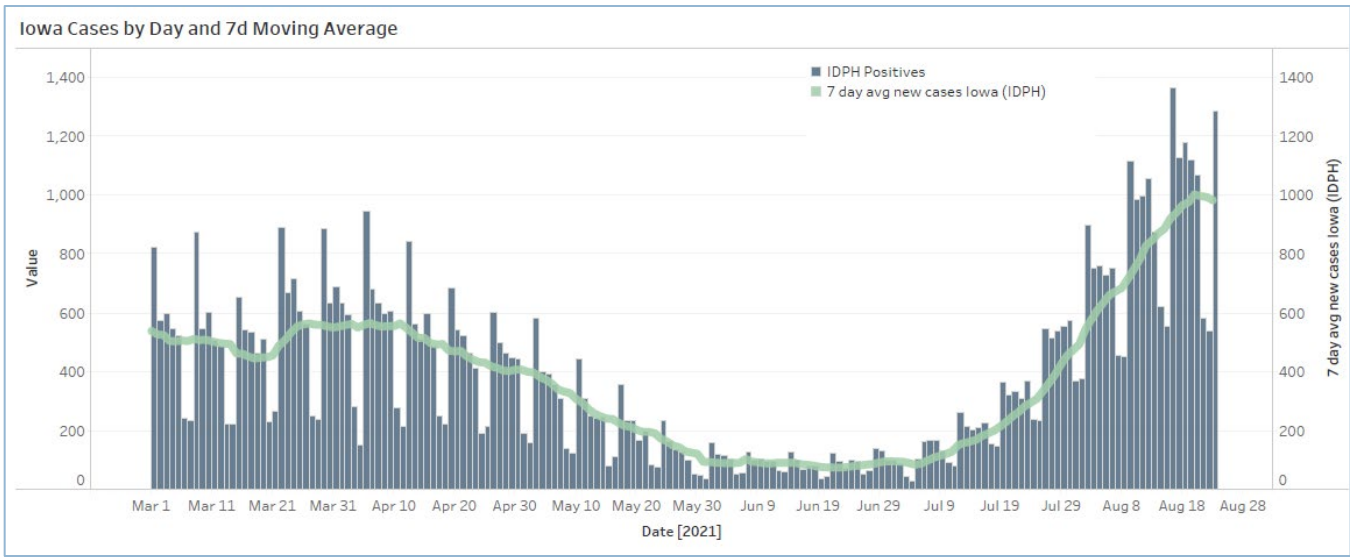
WHO label	Lineage #	Type	%Total	95%PI
Alpha	B.1.1.7	VOC	0.0%	0.0-3.2%
Beta	B.1.351	VOC	0.0%	0.0-3.2%
Gamma	P.1	VOC	0.0%	0.0-3.2%
Delta	B.1.617.2	VOC	99.8%	96.8-100.0%
	AY.2	VOC	0.0%	0.0-3.2%
	AY.1	VOC	0.0%	0.0-3.2%
Eta	B.1.525	VOI	0.0%	0.0-3.2%
Iota	B.1.526	VOI	0.0%	0.0-3.2%
	N/A	B.1.621	0.0%	0.0-3.2%
	B.1.621.1	0.0%	0.0-3.2%	
	B.1.628	0.0%	0.0-3.2%	
Other	Other*		0.1%	0.0-3.2%

* Enumerated lineages are VOI/VOC or are circulating >1% in at least one HHS region during at least one two week period; remaining lineages are aggregated as "Other".

** These data include Nowcast estimates, which are modeled projections that may differ from weighted estimates generated at later dates

Sublineages of P.1 and B.1.351 are aggregated with the parent lineage and included in parent lineage's proportion. AY.3-AY.12 are aggregated with B.1.617.2

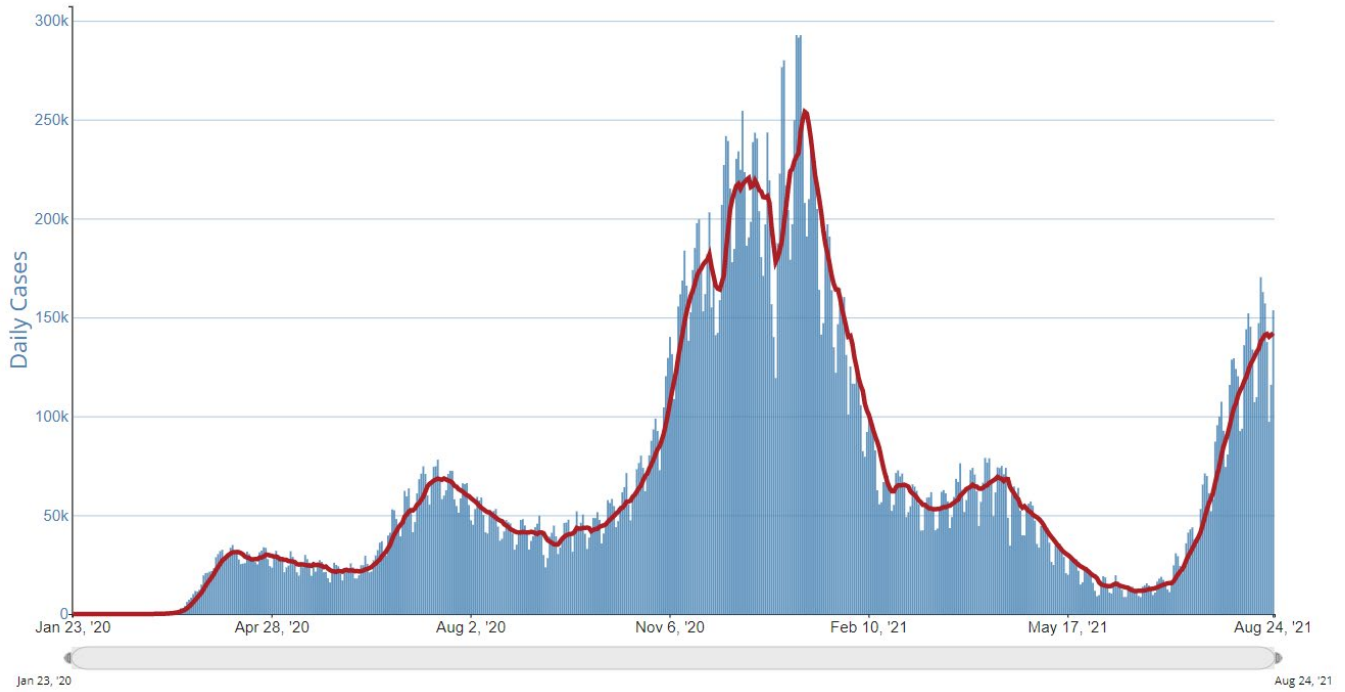
Central Iowa COVID19 Update



Central Iowa COVID19 Update



Daily Trends in Number of COVID-19 Cases in The United States Reported to CDC



	CASES DAILY AVG.	PER 100,000	14-DAY CHANGE	HOSPITALIZED DAILY AVG.	PER 100,000	14-DAY CHANGE	DEATHS DAILY AVG.	PER 100,000	FULLY VACCINATED
United States	152,341	46	+23%	95,240	29	+32%	1,165.3	0.35	52%
Mississippi ›	3,397	114	+26%	1,653	56	+14%	37.7	1.27	37%
Florida ›	21,673	101	+2%	17,183	80	+17%	227.6	1.06	52%
Louisiana ›	4,685	101	-17%	2,646	57	+8%	61.9	1.33	40%
Kentucky ›	3,885	87	+76%	1,989	45	+61%	25.0	0.56	48%
South Carolina ›	4,246	82	+46%	1,983	39	+64%	31.0	0.60	43%
Tennessee ›	5,497	80	+62%	2,276	33	+23%	27.0	0.40	41%
Georgia ›	8,428	79	+56%	5,766	54	+50%	41.7	0.39	41%
Arkansas ›	2,242	74	-4%	1,375	46	+5%	29.9	0.99	40%
Alaska ›	497	68	+59%	130	18	+14%	3.7	0.51	47%
Wyoming ›	383	66	+65%	147	25	+55%	3.7	0.64	38%