



# Daily Operations Briefing

---

May 26, 2020

0800 Hours

# Welcome – Planning Section Chief

---



1. **Welcome & Introductions**
2. **Expected Outcomes**
  - A. Transfer of information
  - B. Hand off duties
  - C. Clarify expectations for the day
  - D. Execution of Incident Action Plan (IAP)
3. **Ground Rules**
  - A. Cell phones and radios off/silent
  - B. Minimize side-bar conversations
  - C. Stick to the agenda

Welcome!



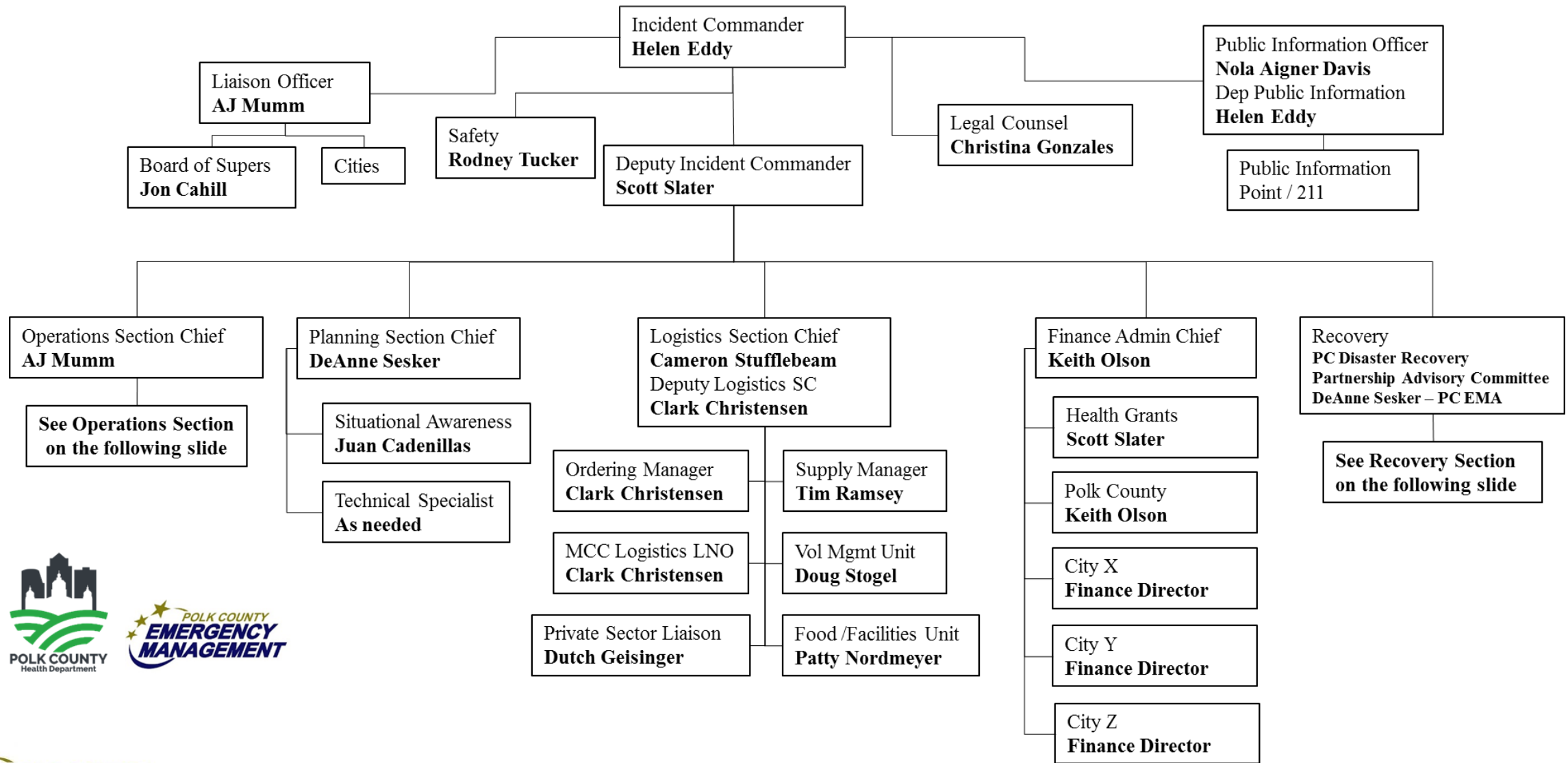
# Opening Comments

---

**Helen Eddy – Incident Commander**

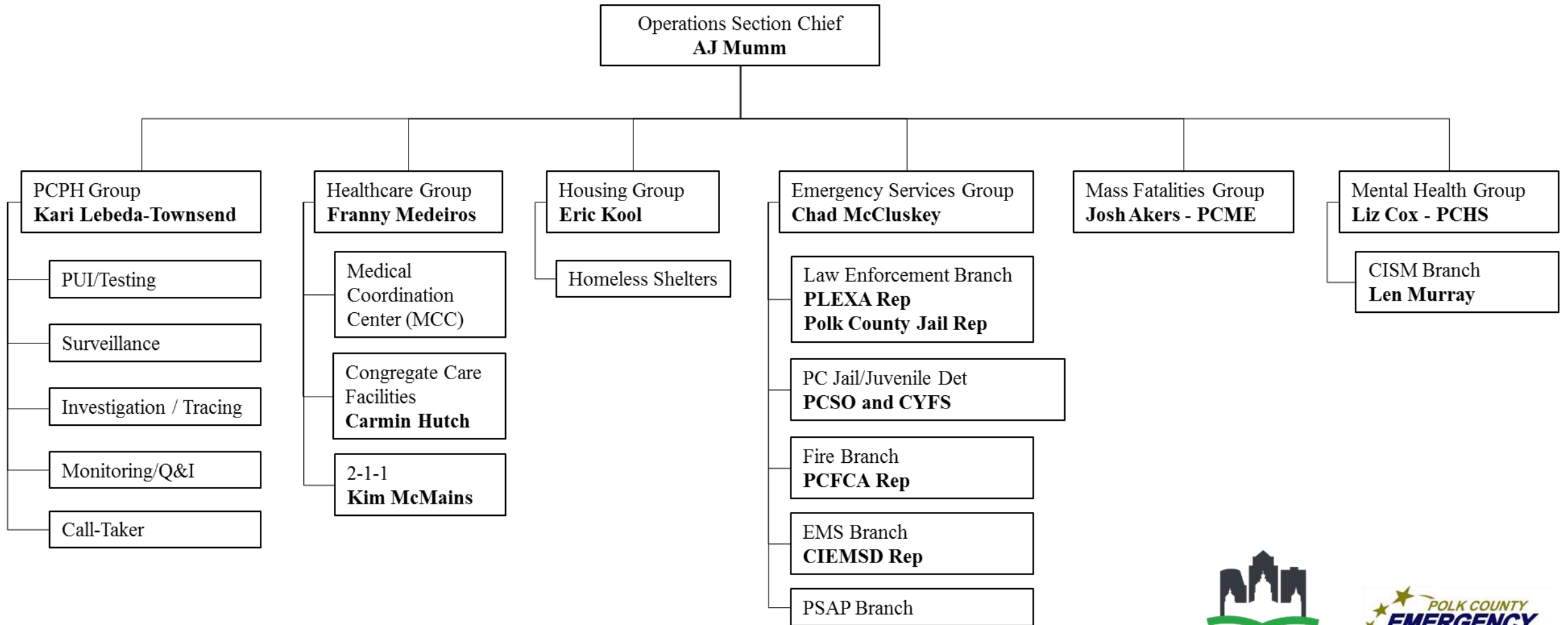
**Polk County Public Health Director**

# CORONAVIRUS COVID-19 ORGANIZATIONAL CHART (05/04/20)



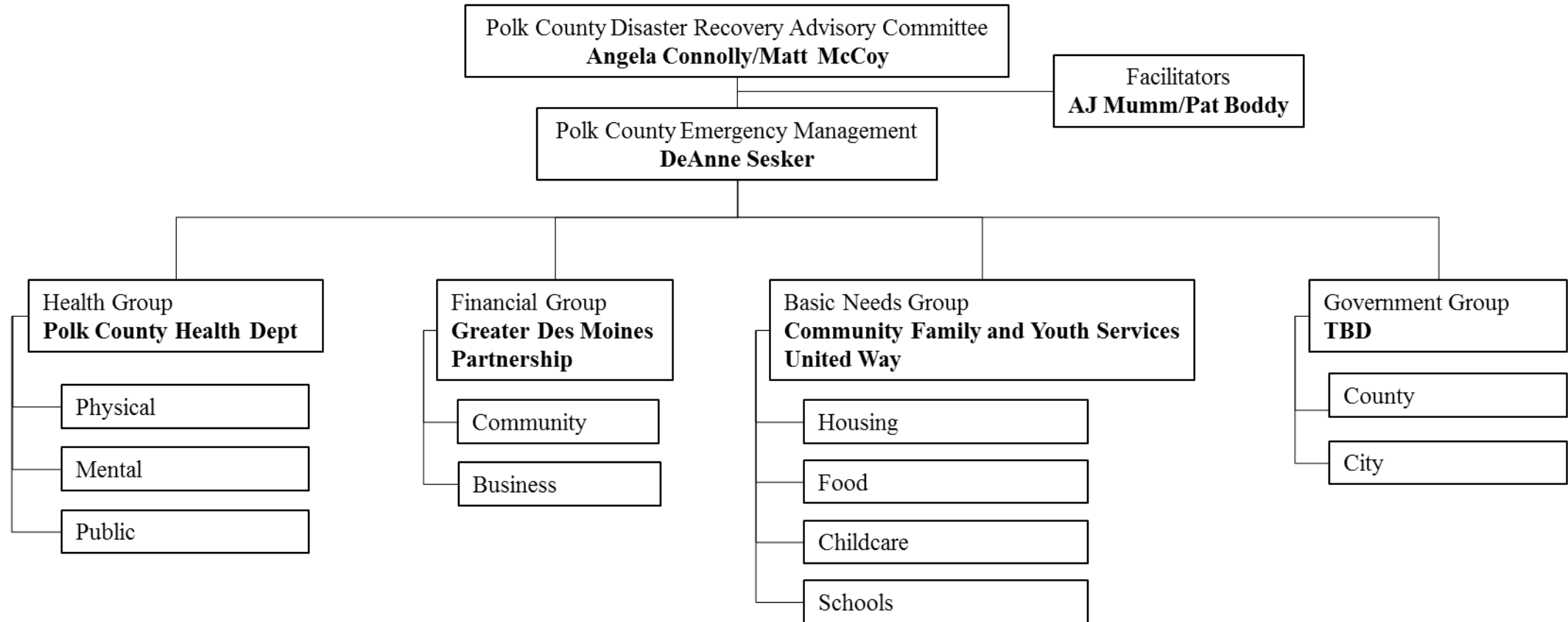
*Our success is measured by how well we help others succeed.*

# Operations Section





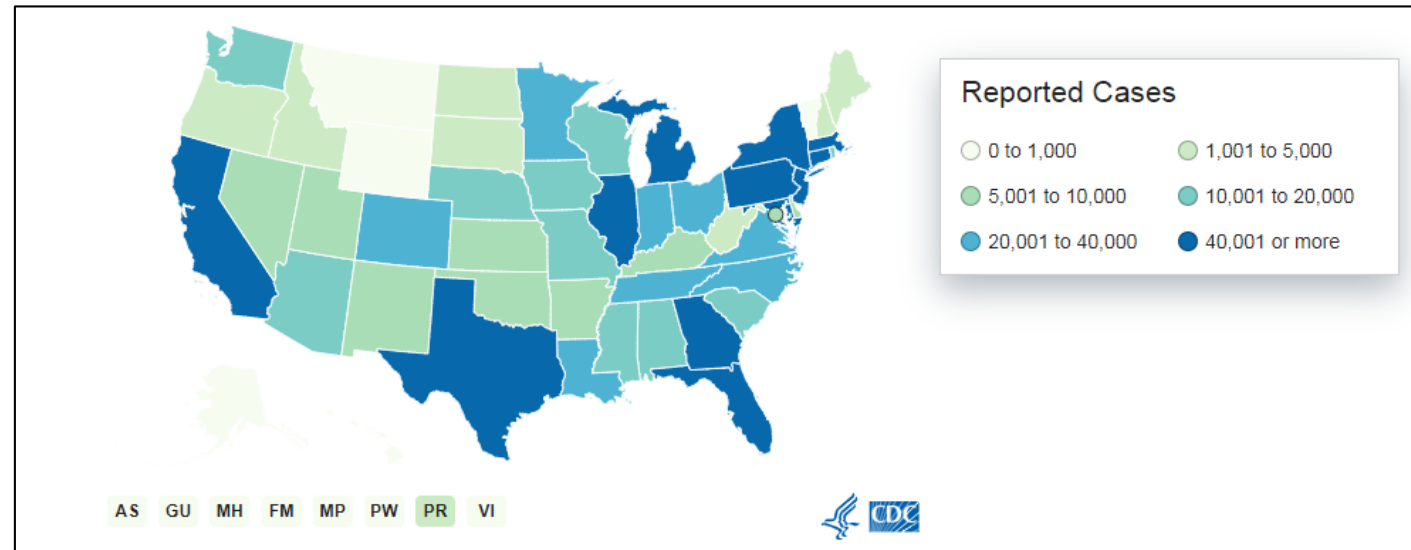
# Recovery Section (05/04/20)



# U.S.A. Situation Update

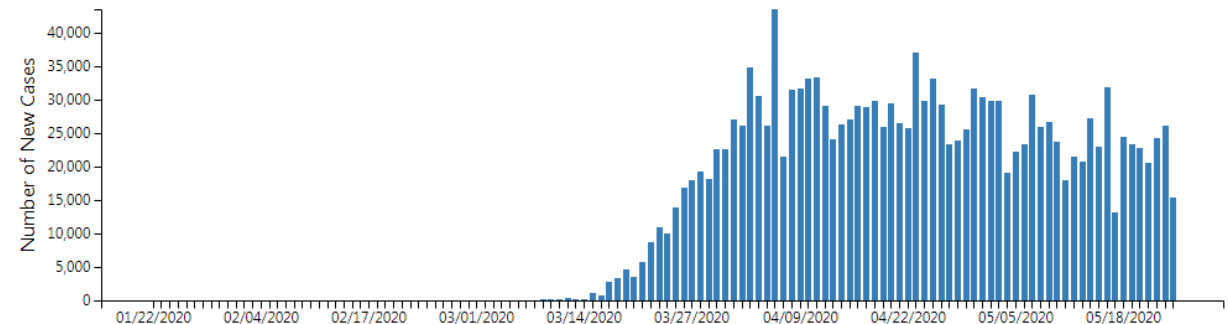
Centers for Disease  
Control and  
Prevention

Current Case Count:  
**1,637,456**  
(+86,361 since Friday)



## New Cases by Day

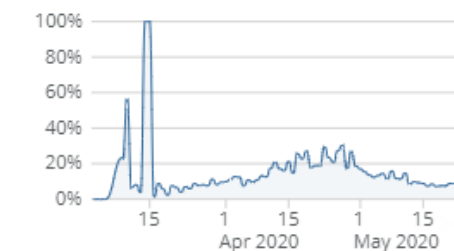
The following chart shows the number of new cases of COVID-19 reported by day in the U.S. since the beginning of the outbreak.



<https://www.cdc.gov/coronavirus/2019-ncov/cases-updates/cases-in-us.html>

| State            | Deaths | State                | Deaths | State            | Deaths |               |    |
|------------------|--------|----------------------|--------|------------------|--------|---------------|----|
| Alaska           | 19     | Delaware             | 7      | Minnesota        | 30     | North Dakota  | 1  |
| Arizona          | 33     | District of Columbia | 7      | Montana          | 24     | Ohio          | 12 |
| California       | 287    | Florida              | 34     | New York         | 18     | Oklahoma      | 7  |
| Colorado         | 34     | Georgia              | 15     | North Carolina   | 31     | Pennsylvania  | 26 |
| Connecticut      | 117    | Hawaii               | 16     | South Carolina   | 15     | Rhode Island  | 10 |
| Idaho            | 15     | Illinois             | 12     | Tennessee        | 32     | South Dakota  | 1  |
| Indiana          | 34     | Iowa                 | 33     | Texas            | 296    | Utah          | 12 |
| Iowa             | 33     | Kansas               | 26     | Vermont          | 4      | Virginia      | 11 |
| Kentucky         | 34     | Louisiana            | 16     | Washington       | 154    | West Virginia | 4  |
| Louisiana        | 16     | Maine                | 11     | Washington State | 154    | Wisconsin     | 24 |
| Maine            | 11     | Massachusetts        | 41     | Wyoming          | 7      |               |    |
| Maryland         | 34     | Michigan             | 85     |                  |        |               |    |
| Massachusetts    | 41     | Minnesota            | 30     |                  |        |               |    |
| Michigan         | 85     | Mississippi          | 11     |                  |        |               |    |
| Minnesota        | 30     | Missouri             | 34     |                  |        |               |    |
| Mississippi      | 11     | Montana              | 24     |                  |        |               |    |
| Missouri         | 34     | Nebraska             | 12     |                  |        |               |    |
| Montana          | 24     | Nevada               | 18     |                  |        |               |    |
| Nebraska         | 12     | New Hampshire        | 4      |                  |        |               |    |
| Nevada           | 18     | New Jersey           | 31     |                  |        |               |    |
| New Hampshire    | 4      | New Mexico           | 12     |                  |        |               |    |
| New Jersey       | 31     | New York             | 18     |                  |        |               |    |
| New Mexico       | 12     | North Carolina       | 31     |                  |        |               |    |
| New York         | 18     | North Dakota         | 1      |                  |        |               |    |
| North Carolina   | 31     | Ohio                 | 12     |                  |        |               |    |
| North Dakota     | 1      | Oklahoma             | 7      |                  |        |               |    |
| Ohio             | 12     | Oregon               | 12     |                  |        |               |    |
| Oklahoma         | 7      | Pennsylvania         | 26     |                  |        |               |    |
| Oregon           | 12     | Rhode Island         | 10     |                  |        |               |    |
| Pennsylvania     | 26     | South Carolina       | 15     |                  |        |               |    |
| Rhode Island     | 10     | South Dakota         | 1      |                  |        |               |    |
| South Carolina   | 15     | Tennessee            | 32     |                  |        |               |    |
| South Dakota     | 1      | Texas                | 296    |                  |        |               |    |
| Tennessee        | 32     | Utah                 | 12     |                  |        |               |    |
| Texas            | 296    | Vermont              | 4      |                  |        |               |    |
| Utah             | 12     | Virginia             | 11     |                  |        |               |    |
| Vermont          | 4      | Washington           | 154    |                  |        |               |    |
| Virginia         | 11     | Washington State     | 154    |                  |        |               |    |
| Washington       | 154    | West Virginia        | 4      |                  |        |               |    |
| Washington State | 154    | Wisconsin            | 24     |                  |        |               |    |
| West Virginia    | 4      | Wyoming              | 7      |                  |        |               |    |
| Wisconsin        | 24     |                      |        |                  |        |               |    |
| Wyoming          | 7      |                      |        |                  |        |               |    |

**% Individuals Positive**  
**13.1%**



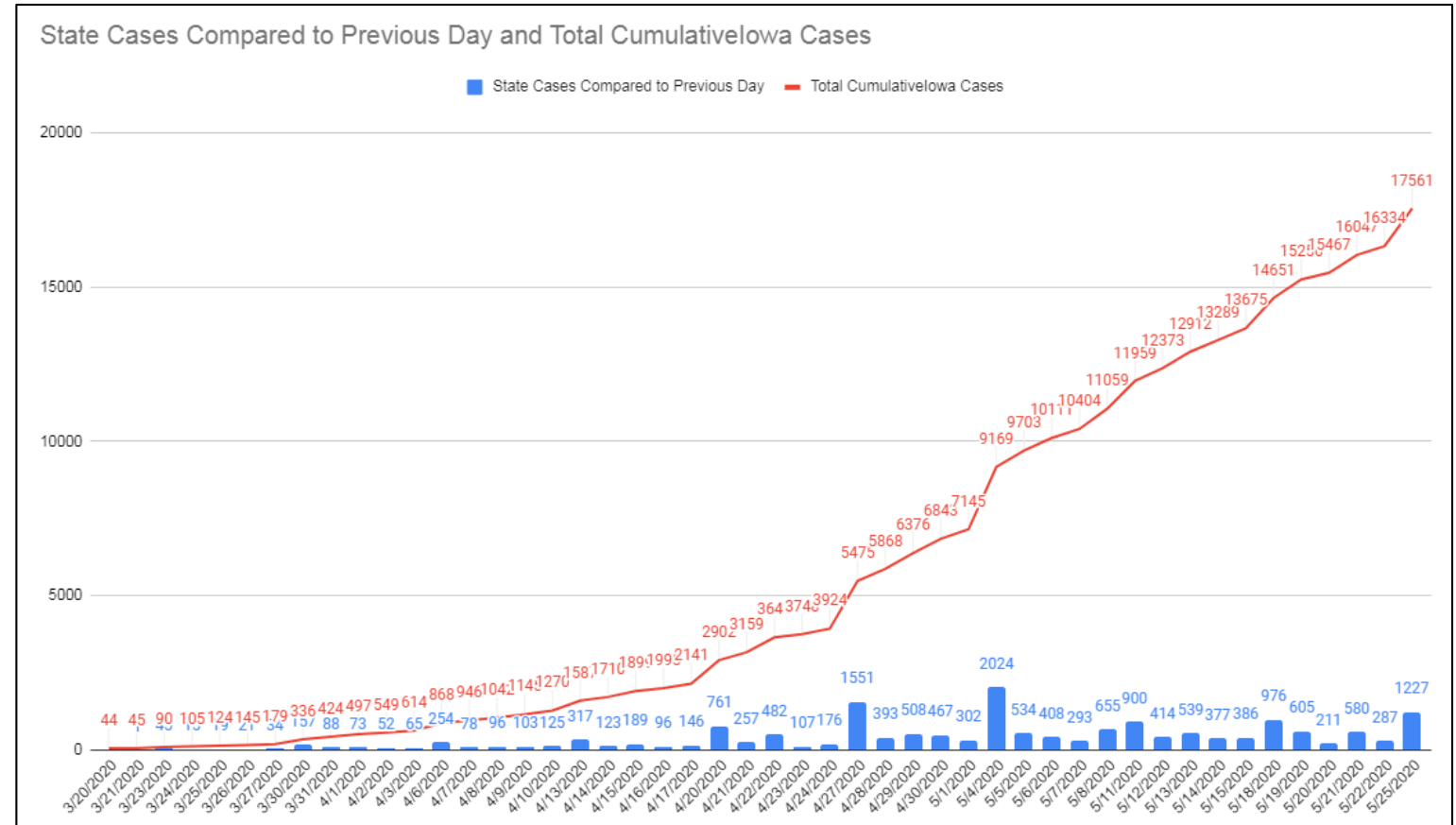
6.3%  
% Positive Yesterday



# Iowa Statistics - Deaths



**Statewide Total  
Deaths  
458  
(+40 since Friday)**



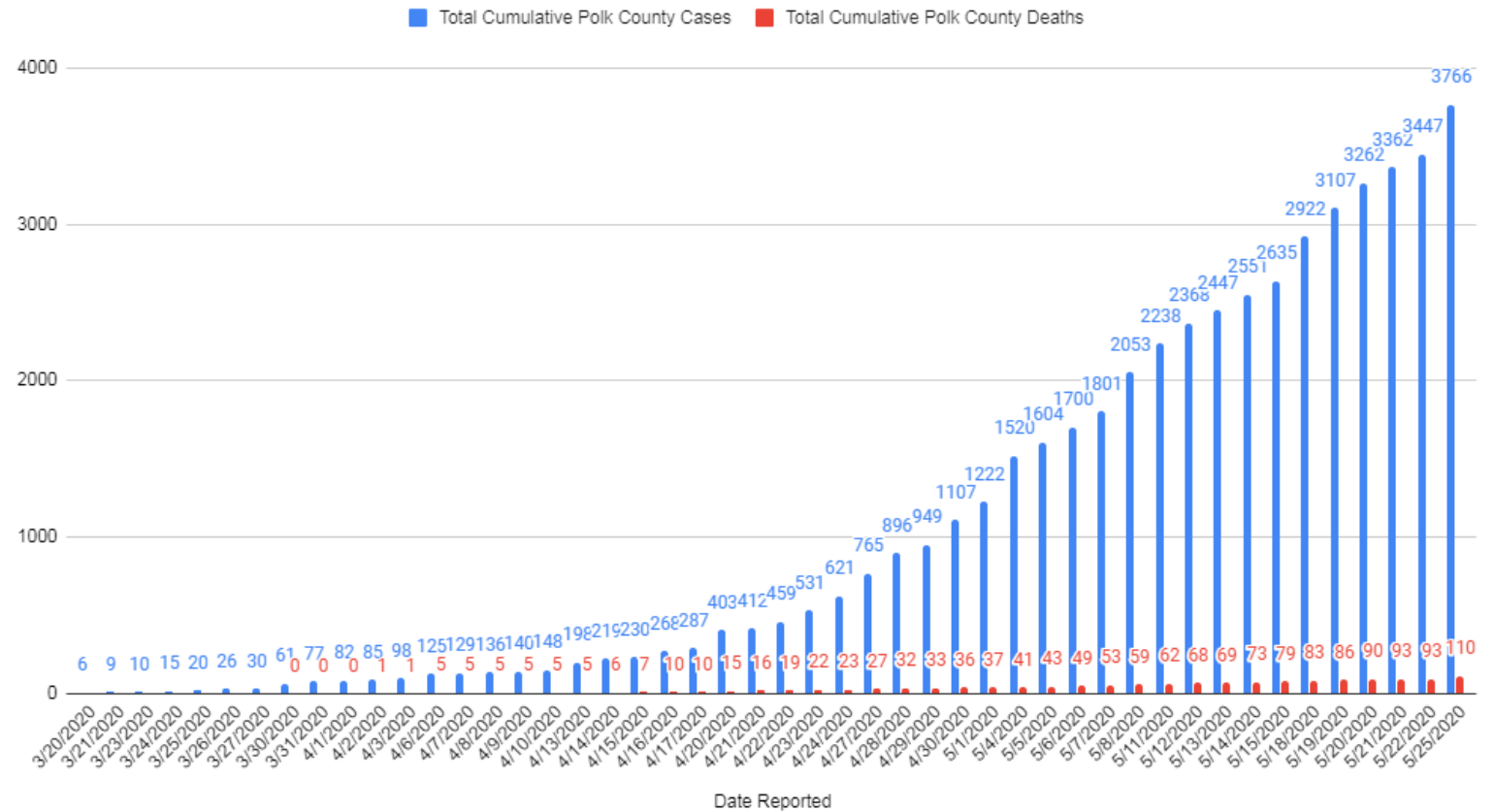
# Polk County Total Cases and Deaths



| COVID-19 Cases in Polk County |                           |
|-------------------------------|---------------------------|
| Confirmed                     | 3,447 (+319 since Friday) |
| Deaths                        | 110 (+17 since Friday)    |

Confirmed Cases are based on IDPH data  
Number of deaths are tracked by PCHD

Total Cumulative Polk County Covid Cases and Total Cumulative Polk County Covid Deaths



# Congregate Living Cases and Outbreaks

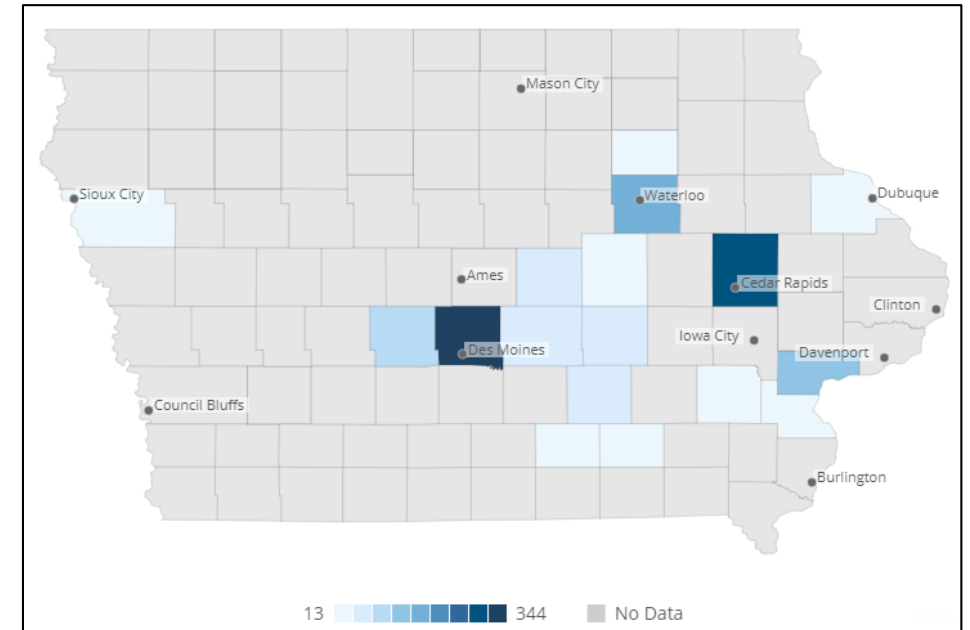


## Polk County Facilities Impacted

|   |                      |
|---|----------------------|
| Total Facilities Impacted               | 75 (+0 since Friday) |
| Facilities Currently Monitored          | 68 (+0 since Friday) |
| • Facilities with cases; no outbreak    | 42 (+0 since Friday) |
| • Facilities with a confirmed outbreak* | 26 (+0 since Friday) |

\*outbreak = 3 or more confirmed cases

| ▲ County           | ↕ Facility  | ▼ Positive Cases | ↕ Total Recovered |
|--------------------|---|------------------|-------------------|
| <b>Total Cases</b> |   | <b>344</b>       | <b>113</b>        |
| — Polk             | Bishop Drumm Retirement Center                    | 99               | 70                |
|                    | Trinity Center at Luther Park                     | 95               | 17                |
|                    | University Park Nursing and Rehabilitation Center | 51               | 2                 |
|                    | Fleur Heights Center for Wellness & Rehab         | 44               | 11                |
|                    | Polk City Nursing and Rehabilitation Center       | 20               | 1                 |
|                    | Altoona Nursing & Rehabilitation Center           | 19               | 3                 |
|                    | Mitchell Village Care Center                      | 16               | 9                 |
| Polk TOTAL         |   | 344              | 113               |



# PCPH Group – Kari Lebeda-Townsend, PCHD

---



## Recent Accomplishments

- Case management, contact tracing and follow-up continues
- New procedures for internal tracking system
- Expanded intake and IDSS data entry
- Locations and approaches to increase CD team staff capacity
- Coordination on COVID-19 mortality review with PCME
- Through the PIO, interpreters were embedded with the CD Team
- Developed a PCHD Strike Team, tested 22 and results back within 26 hours

# PCPH Group – Kari Lebeda-Townsend, PCHD



| Objectives  | Due Date   |
|---|------------|
| Addressing school return questions and children on immunization provisional waivers for 2020-2021 school year | Monitoring |
| Onboard and train additional RNs and CMAs to support disease investigation, follow up and contact tracing     | Ongoing    |
| Process with PCME to verify cases   | Ongoing    |
| Work with community partners to meet basic patient and family needs   | Ongoing    |
| Coordinating individual case investigation and facility under monitoring and with outbreaks                   | Ongoing    |
| Develop position job aid to document processes for continuity   | 4/8        |
| Identify successor  | 4/8        |
| Develop a patient education video w/PIO for those that have tested positive                                   | 5/4        |
| Provide information or host a call with PC schools on re-opening considerations                               | 5/6        |
| Determine PCHD Strike Team strategy, plan and logistics to deploy as needed                                   | 5/13       |



# Congregate Care Group – Carmin Hutch, PCHD

---



## Recent Accomplishments

- Building out a team to meet the demands of LTCF/congregate site hotspots
- Managing a high-number of LTCF/congregate sites to include daily calls to provide guidance to facility staff
- Deployed a PCHD Strike Team, tested 22 and results back within 26 hours

# Congregate Care Group – Carmin Hutch, PCHD



| Objectives  | Due Date |
|---|----------|
| Daily calls with LTC impacted facilities  | Ongoing  |
| Identify successor  | 4/8      |
| Coordinate with Mental Health Group on transport of group home patients   | 4/9      |
| Provide guidance to group homes on staffing recommendations and how to minimize exposure to “narrow the web” across group home locations/patients | 4/14     |
| Define process with logistics and staffing requests   | 4/22     |

# Medical Coord Ctr (MCC) Group – Franny Medeiros, PCHD

---



## Recent Accomplishments

- Hospital systems standardized surge plans
- 2-1-1 is capturing symptomatic calls vs worried well now, which provides additional surveillance
- Airway bypass added to EMResource
- Capturing data on a daily basis
- Non-traditional hospital surge plan completed

# Medical Coord Ctr (MCC) Group – Franny Medeiros, PCHD



| Objectives   | Due Date |
|--|----------|
| Collaborate with IANG LNO on regional plans within Service Area 1                | Ongoing  |
| Coordinate with RMCC on their operations   | Ongoing  |
| Coordinate with LTC facilities   | Ongoing  |
| Continue PPE discussion to come to a hospital system agreement                   | Ongoing  |
| Implement Ethical Standards of Care within the hospitals; awaiting IDPH guidance | Ongoing  |
| Participate in the development of the regional surge plan with the RMCC          | Ongoing  |
| Develop position job aid to document processes for continuity                    | 4/1      |
| Develop and approve an alternate care site plan                                  | 4/17     |
| Developing the processes for the non-traditional surge plan                      | 4/20     |

# Mass Fatalities Group – Dr. Joshua Akers, PCME Office

---



## Recent Accomplishments

- Reached out local funeral homes to exchange information about COVID
- Spoke with Iowa Office of the State Medical Examiner (IOSME)
- Discuss National Guard plans with IOSME
- Identified Hamilton's Funeral Home – Mitchellville location as overflow



# Mass Fatalities Group – Dr. Joshua Akers, PCME Office



| Objectives  | Due Date |
|---|----------|
| Surge plan for mass fatalities  | Ongoing  |
| Monitor death trends  | Ongoing  |
| Coordinate with PCHD/CD Team on LTCF deaths                             | Ongoing  |
| Meeting with funeral homes and State ME to discuss needs moving forward | Ongoing  |

# Mental Health Group – Liz Cox, Polk County Health Services

---



## Recent Accomplishments

- Established a hotline for medical staff & emergency responders to support their own mental health
- Launched social media, PSAs and resource tool kit for mental health
- Mental health support via 211is live
- Published list of providers accepting new telehealth mental health patients
- Funding approved to equip consumers with phones for telehealth services
- Finalized and shared a draft family plan for emergency responders
- Connected mental health group homes with Operations – PCHD
- Coordinated respite services for parents of kids with special needs
- Succession planning/successor identified
- Developed a Facebook filter and “care” package of printables for healthcare provider appreciation
- Presented, with EMA, to the Des Moines Partnership

# Mental Health Group – Liz Cox, Polk County Health Services



| Objectives  | Due Date |
|---|----------|
| Continue connecting with volunteers with home-bound people      | Ongoing  |
| Equip (purchase) consumers with phones for telehealth services  | Ongoing  |
| Coordinate with Legal Aid                                       | Ongoing  |
| Develop and present webinars to schools and workplace audiences | 6/4      |

# Housing Group – Eric Kool, Polk County Comm, Family, Youth Services


---



## Recent Accomplishments

- Identified discharge transportation options
- Approved alternative housing for Polk County essential employees
- Distributed a memo to hospitals and clinics regarding the isolation shelter and direct referrals
- Supported the completion of the FEMA Non-Congregate Housing application
- Added staff to support PCHD CD Team to address questions of isolation families
- Draft memos to PCHD for resource and referrals for family isolation and homeless PUI individuals

# Housing Group – Eric Kool, Polk County Comm, Family, Youth Services



| Objectives   | Due Date |
|--|----------|
| Continue to interview and hire staff   | Ongoing  |
| Coordinate with Central Intake/PHC on the expansion of rapid re-housing for families on wait lists or in shelters  | Ongoing  |
| Creating a process to distribute refugee grants for outreach and support   | Ongoing  |
| Meet with MCC to review modeling to determine alternative solutions to sheltering  | 4/22     |
| Develop a task list required for Isolation Shelter transition/demobilization; coordinate with Logistics  | 5/1      |
| Meet with PCHD, MCC, shelter representatives to outline processes for hospital discharge of homeless population and determine solutions to the gaps and communicate expectations | 5/1      |



# Emergency Services Group – Common Accomplishments

---



## Recent Accomplishments

- Primary alternative (Phase 1) housing location for emergency services is open and ready to receive responders
- Childcare options and process has been developed and distributed to all organizations
- Support and communicate 211 and other mental health resources and family planning for emergency responders (CISM and peer support)
- LE agency tiered mutual aid response provided to PSAPs via E911 Coordinator (FD/EMS Teams Cards already in place)
- Shared emergency services dashboard to all stakeholders

# Emergency Services Group – Common Objectives



| Objectives  | Due Date |
|---|----------|
| Plans for secondary locations for first responder alternative housing | Ongoing  |

# Emergency Services Dashboard



| Normal Staffing : Staffing Unaffected / Normal Operations and Service Levels / Good or Sufficient PPE with backstock     |            |           |                                     |            |                  |
|--|------------|-----------|-------------------------------------|------------|------------------|
| Staffing Levels Affected : Overtime Mandated / Reduced Service Levels / Minimal PPE on hand with no backstock            |            |           |                                     |            |                  |
| Critically Low Staffing Levels / Severely Limited or Affected Service Levels / Inadequate PPE Supply for Immediate Needs |            |           |                                     |            |                  |
| Agency   | Discipline | Personnel | Daily Operations / Service Delivery | PPE Supply | Notes / Comments |
| Altoona Fire   | Fire / EMS |           |                                     |            |                  |
| Ankeny Fire  | Fire / EMS |           |                                     |            |                  |
| Boundurant Fire  | Fire / EMS |           |                                     |            |                  |
| Carlisle Fire  | Fire / EMS |           |                                     |            |                  |
| Clive Fire   | Fire / EMS |           |                                     |            |                  |
| Delaware TWP Fire  | Fire / EMS |           |                                     |            |                  |
| Des Moines Fire  | Fire / EMS |           |                                     |            |                  |
| DBM Airport Fire   | Fire       |           |                                     |            |                  |
| Elkhart Fire   | Fire / EMS |           |                                     |            |                  |
| Granger Fire   | Fire / EMS |           |                                     |            |                  |
| Huxley Fire  | Fire / EMS |           |                                     |            |                  |
| Indianola Fire   | Fire / EMS |           |                                     |            |                  |
| Johnston-Grimes Fire   | Fire / EMS |           |                                     |            |                  |
| Life Flight  | EMS        |           |                                     |            |                  |
| Maxwell Fire   | Fire / EMS |           |                                     |            |                  |
| Mercy-One Air  | EMS        |           |                                     |            |                  |
| Mercy-One Ground   | EMS        |           |                                     |            |                  |
| Midwest Ambulance  | EMS        |           |                                     |            |                  |
| Midwest Medical Transport  | EMS        |           |                                     |            |                  |
| Mitchellville Fire   | Fire / EMS |           |                                     |            |                  |
| Northern Warren Fire   | Fire / EMS |           |                                     |            |                  |
| Norwalk Fire   | Fire / EMS |           |                                     |            |                  |
| Pleasant Hill Fire   | Fire / EMS |           |                                     |            |                  |
| Polk City Fire   | Fire / EMS |           |                                     |            |                  |
| Runnells Fire  | Fire / EMS |           |                                     |            |                  |
| Saylor TWP Fire  | Fire / EMS |           |                                     |            |                  |
| Urbandale Fire   | Fire / EMS |           |                                     |            |                  |
| Waukeg Fire  | Fire / EMS |           |                                     |            |                  |
| West Des Moines EMS  | EMS        |           |                                     |            |                  |
| West Des Moines Fire   | Fire       |           |                                     |            |                  |
| Windsor Heights Fire   | Fire / EMS |           |                                     |            |                  |

| Normal Staffing : Staffing Unaffected / Normal Operations and Service Levels / Good or Sufficient PPE with backstock     |                 |           |                                     |            |
|--|-----------------|-----------|-------------------------------------|------------|
| Staffing Levels Affected : Overtime Mandated / Reduced Service Levels / Minimal PPE on hand with no backstock            |                 |           |                                     |            |
| Critically Low Staffing Levels / Severely Limited or Affected Service Levels / Inadequate PPE Supply for Immediate Needs |                 |           |                                     |            |
| Agency   | Discipline      | Personnel | Daily Operations / Service Delivery | PPE Supply |
| Altoona PD   | Law Enforcement |           |                                     |            |
| Ankeny PD  | Law Enforcement |           |                                     |            |
| Carlisle PD  | Law Enforcement |           |                                     |            |
| Clive PD   | Law Enforcement |           |                                     |            |
| Des Moines Emerg Communications  | PSAP            |           |                                     |            |
| Des Moines PD  | Law Enforcement |           |                                     |            |
| Johnston PD  | Law Enforcement |           |                                     |            |
| Mitchellville PD   | Law Enforcement |           |                                     |            |
| Norwalk PD   | Law Enforcement |           |                                     |            |
| Pleasant Hill PD   | Law Enforcement |           |                                     |            |
| Polk City PD   | Law Enforcement |           |                                     |            |
| Polk Co Sheriff's Office   | Law Enforcement |           |                                     |            |
| Polk County Communications   | PSAP            |           |                                     |            |
| Urbandale PD   | Law Enforcement |           |                                     |            |
| Waukeg PD  | Law Enforcement |           |                                     |            |
| West Des Moines PD   | Law Enforcement |           |                                     |            |
| WESTCOM  | PSAP            |           |                                     |            |
| Windsor Heights PD   | Law Enforcement |           |                                     |            |

# EMS Branch – CIEMSD



## Recent Accomplishments

- Primary alternative (Phase 1) housing location for emergency services is open and ready to receive responders
- Confirmed process for exposure reporting for EMS providers/HC workers
- Childcare options and process has been developed and distributed to all organizations
- Support and communicate 211 and other mental health resources for emergency responders
- Approval of medical directors to implement assess and refer protocol
- Airway Management Diversion Protocol implemented
- Assess and refer protocol approved and disseminated
- Protocol 36 is completed and ready for activation if needed

# EMS Branch – CIEMSD



| Objectives   | Due Date |
|--|----------|
| Alternative transport destinations - waiting on health systems                                       | Paused   |
| Revisit the notification algorithm to notify providers of a positive test, to include LTC facilities | Paused   |



# Operations Section Chief – A.J. Mumm, Polk Co EMA

---



## Recent Accomplishments

- Established a sustainable battle rhythm routine among Groups and Branches
- Maintain effective communication between Operations and Logistics
- Gathering and sharing of situational awareness among operational partners
- Enabled virtual coordination capabilities
- Partnered with Logistics on order/request awareness video

# Operations Section Chief – A.J. Mumm, Polk Co EMA



| Objectives   | Due Date |
|--|----------|
| Maintain effective coordination with State Emergency Operations Center (SEOC)          | Ongoing  |
| Share information with the public through support of the weekly stakeholder's briefing | Ongoing  |
| Develop position job aid to document processes for continuity                          | 4/1      |
| Identify successor   | 4/8      |
| Fully embed logistics position within the MCC  | 5/15     |
| Prepare incident stabilization and resiliency strategies for recovery                  | 6/1      |

# Planning Section Chief – DeAnne Sesker, Polk Co EMA

---



## Recent Accomplishments

- Developed position job aid for continuity
- Established a process to collect, prepare and produce incident documentation on a daily basis
- Validated that EOC daily planning meetings can be conducted virtually
- Recovery Advisory Group established and have a framework developed to begin planning for recovery

# Planning Section Chief – DeAnne Sesker, Polk Co EMA



| Objectives   | Due Date      |
|--|---------------|
| Gather Group accomplishments and objectives for next day                       | Ongoing       |
| Prepare for the next day's daily briefing                                      | Ongoing       |
| Meet with Section Chiefs and Group Supervisors to begin collecting AAR content | Ongoing       |
| Prepare for Tuesday's Stakeholder Briefing                                     | Every Monday  |
| Conduct Weekly Stakeholder Briefing  | Every Tuesday |
| Prepare and publish the weekly IAP   | Every Tuesday |
| Identify successor   | 4/8           |

# Logistics Section Chief – Cameron Stufflebeam, Polk Co EMA

---



## Recent Accomplishments

- 250,000 items have been donated to date
- 200,000 items have been supplied to date
- Large donations continued to be offered
- Shared PPE with 7 surrounding counties
- Guidance for resource requests (materials and personnel) was distributed via DLAN
- Small “push pack” has been created and is ready to be deployed if needed
- Demobilization plan is developed and ready to be implemented when necessary

→ **logistics@polkcountyiowa.gov** ←

# Logistics Section Chief – Cameron Stufflebeam, Polk Co EMA



| Objectives   | Due Date |
|--|----------|
| 10-day plan and re-order process, Alternate sourcing, WebEOC clean-up and entry<br>State asset delivery and distribution | Ongoing  |
| Work with Ops and Congregate Group on LTC status and communications loop   | Ongoing  |
| Volunteer management process documented  | 4/2      |
| Prepare a plan that will identify and describe how your Section/Group will work<br>virtually                             | 4/8      |
| Draft a demobilization plan for the Isolation Shelter  | 5/29     |
| Develop a supply chain video for those who do not have access to the PCEMA<br>logistics process                          | 5/22     |

# Resource Management Status



|                              | Total Requests | Total Requests Filled | Total Requests Partially Filled | Total Items Requested | Total Items Issued |
|------------------------------|----------------|-----------------------|---------------------------------|-----------------------|--------------------|
| <b>3/31/2020 - 4/15/20</b>   | 176            | 95                    | 81                              | 132,933               | 84,073             |
| <b>4/16/2020 - 4/24/2020</b> | 127            | 106                   | 21                              | 50,282                | 46,967             |
| <b>4/25/2020 - 5/3/2020</b>  | 43             | 29                    | 23                              | 43,694                | 27,941             |
| <b>5/5/2020 - 5/8/2020</b>   | 56             | 46                    | 10                              | 37,828                | 28,381             |
| <b>5/11/2020 - 5/15/2020</b> | 103            | 85                    | 18                              | 47,695                | 35,467             |
| <b>18-May</b>                | 12             | 7                     | 5                               | 13,604                | 11,950             |
| <b>19-May</b>                | 9              | 4                     | 5                               | 5,319                 | 2,455              |
| <b>20-May</b>                | 3              | 2                     | 1                               | 1,260                 | 730                |
| <b>21-May</b>                | 4              | 2                     | 2                               | 3,614                 | 2,884              |
| <b>22-May</b>                | 39             | 35                    | 4                               | 13,092                | 11,022             |
| <b>23-May</b>                |                |                       |                                 |                       |                    |
| <b>24-May</b>                |                |                       |                                 |                       |                    |
| <b>Totals</b>                | <b>572</b>     | <b>411</b>            | <b>170</b>                      | <b>349,321</b>        | <b>251,870</b>     |



# Logistics Section – Dutch Geisinger, Safeguard Iowa

---



## Recent Accomplishments

- Maintaining Q&A on [safeguardiowa.org](http://safeguardiowa.org)
- Monitoring federal trends through FEMA CIKR and CISA calls
- Working with OSHA and DOL to answer questions for private sector
- Working with Hawkeye hotels on alternative housing for medical, NG, and responders
- Acquired a list of companies that are manufacturing PPE
- Organizations will share messaging about not hoarding food/supplies
- Receiving additional PPE donations from private sector

# Logistics Section – Dutch Geisinger, Safeguard Iowa



| Objectives   | Due Date |
|--|----------|
| Address concerns from private sector                                     | Ongoing  |
| Continue adding to scam and FAQ page                                     | Ongoing  |
| Discussion with IEDA on recovery and messaging to businesses             | Ongoing  |
| Continue to support private sector and government requests for resources | Ongoing  |
| Identify specific donors for needed items                                | Ongoing  |

# Finance Section – Keith Olson, Polk County Auditor's Office and Scott Slater, Polk County Public Health

---



## Recent Accomplishments

- COVID-19 Crisis Response Supplemental Funding contract approved by BOS 4/7/2020
- Reviewed funding parameters and work with staff to identify needs and appropriate expenditures
- Developed a plan with Auditor's Office to assure eligible expenditures are being captured and coded to supplemental health grant
- Polk County government has completed a Request for Public Assistance (RPA) to FEMA cover all county departments
- All \$160K of IDPH supplemental funds are obligated
- Completed the non-congregate shelter application process with the support of the Housing Group Supervisor

# Finance Section – Keith Olson, Polk County Auditor’s Office and Scott Slater, Polk County Public Health



| Objectives  | Due Date |
|---|----------|
| Gathering costs from each partner on projected costs per activity and initial IDPH approval | Ongoing  |
| Coordinate between Housing Group F/A and BOS re: reimbursement and stimulus impacts         | Ongoing  |

# Recovery Section – Matt McCoy, Board of Supervisors and DeAnne Sesker, Polk County Emergency Management

---



## Recent Accomplishments

- Polk County Advisory Group established
- Initial framework of focus areas identified
- Consultant identified to support the recovery planning coordination

# Recovery Section – Matt McCoy, Board of Supervisors and DeAnne Sesker, Polk County Emergency Management



| Objectives  | Due Date |
|---|----------|
| Complete the contract for recovery facilitator (Pat Boddy)                        | 5/8      |
| Schedule and conduct initial interviews with Advisory Group and Chairs            | 5/13     |
| Summarize interviews and identify gaps, solutions, dependencies and opportunities | 5/15     |

# Public Information Officer – Nola Aigner Davis, Polk Co Health

---



## Recent Accomplishments

- Working with JIC to answer media requests
- Social media graphics/website updates
- Ongoing conversations with refugee/immigrant organizations to provide COVID-19 resources
- Interpretation call line established
- Coordinated interpreters to be onsite with the PCHD CD Team



# Public Information Officer – Nola Aigner Davis, Polk Co Health



| Objectives   | Due Date |
|--|----------|
| Working with refugee/immigrant population  | Ongoing  |
| Update website and social media  | Ongoing  |
| Work on MCC communication needs with JIC   | Ongoing  |
| Work with refugee messaging and information sharing                                  | Ongoing  |
| Coordinate with BOS to develop a universal video on the use of PPE for polling sites | TBD      |
| Start messaging and communication for recovery process                               | Ongoing  |
| Work with team to monitor and address rumors   | Ongoing  |

# Policy Group – Supervisor Matt McCoy, Polk Co BOS

---



1. Reviewing stimulus package and will be pushing out messaging
2. CISS numbers are high; will look for ways to support
3. Recovery – guidance for re-opening or alternative options until re-opening for various businesses/attractions
4. Information on/help with financial crisis management for families; developing PSAs
5. Election planning
6. Immigrant/refugee messaging
7. Small business grants being developed; non-profit support
8. Strengthen messages to business community and refugee employees
9. Recovery start-up process to begin
10. Coordinated with WHO-TV to implement “13 Days of Caring” for the Disaster Recovery Fund

# Weekly EOC Status

---



- Monday, Tuesday and Friday
  - Planning meetings
- Wednesday – Thursday
  - No Planning meetings

# Current Focus Areas - PSC

---



- COVID-19 testing
- Surge capacity
- Continuity Planning
- Ethics/Crisis Standards of Care
- Food pantry (monitoring)
- Congregate facilities

# Ongoing Initiatives - PSC

---



- Resource management
- Rumor control
- Law Enforcement
- Critical infrastructure
- Mass fatality planning
- Alternative housing

# Emerging Priorities - PSC

---



- Blood donation/supply
- Second Wave planning
- Demobilization
- Recovery

# Safety Officer – Polk County Risk Management

---



## Safety Top 5

1. Wash your hands / use sanitizer frequently
2. Take your temp –  $\leq 100.4$
3. Sleep
4. Monitor stress
5. Drink water / healthy foods

## Hazardous Weather Outlook

### Today

Afternoon severe weather predicted – winds and possible tornadoes, localized flooding. T-storms late evening. High of 79.

### Wednesday

Afternoon rain/t-storms, high of 78. Evening rain, low of 65.

### Thursday

Showers and t-storms. High near 76, low of 56.

## Spotter Activation Statement

- Spotter Activation is possible today



# Weekly Meetings at a Glance



|      | Monday               | Tuesday                              |                      | Wednesday              | Thursday                   |         | Friday               |
|------|----------------------|--------------------------------------|----------------------|------------------------|----------------------------|---------|----------------------|
| 800  | Daily Briefing       | Daily Briefing                       |                      | Daily Briefing (Z)     | Daily Briefing (Z)         |         | Daily Briefing       |
| 830  |                      |                                      |                      |                        |                            |         |                      |
| 900  |                      |                                      |                      |                        |                            |         |                      |
| 930  |                      |                                      |                      | County EMA / HSEMD (C) |                            |         |                      |
| 1000 | State CBTS (C)       |                                      |                      |                        | State CBTS (C)             |         |                      |
| 1030 |                      | Weekly Stakeholders Briefing (Z)     |                      |                        |                            |         |                      |
| 1100 | Gov Press Conference |                                      | Gov Press Conference | Gov Press Conference   | Gov Press Conference       |         | Gov Press Conference |
| 1130 |                      |                                      |                      |                        |                            |         |                      |
| 1200 | Law Enforcement (C)  | Shelters (C)                         |                      | HCC / IDPH (Z)         |                            |         | Law Enforcement (C)  |
| 1230 |                      |                                      |                      |                        |                            |         |                      |
| 1300 | MCC (Z)              | Critical Infrastructure Partners (C) | MCC (Z)              | MCC (Z)                | Dallas County Briefing (Z) | MCC (Z) | MCC (Z)              |
| 1330 |                      |                                      |                      |                        |                            |         |                      |
| 1400 |                      | Chief Medical Officers (C)           |                      |                        | Chief Medical Officers (C) |         |                      |
| 1430 |                      |                                      |                      |                        |                            |         |                      |
| 1500 |                      |                                      |                      |                        |                            |         |                      |
| 1530 |                      |                                      |                      | Mass Fatalities (Z)    |                            |         |                      |
| 1600 |                      | EMS (Z)                              |                      |                        |                            |         |                      |
| 1630 |                      |                                      |                      |                        |                            |         |                      |
| 1700 |                      |                                      |                      |                        |                            |         |                      |

# BIG WINS!



| What   | Who                                 |
|--|-------------------------------------|
| 2-1-1 for the public, clinical and responder audiences       | Healthcare and Mental Health Groups |
| Town Halls/Media coverage                                    | PIO                                 |
| Isolation Shelter  | Housing Group                       |
| Social media and PCHD website                                | PIO                                 |
| Partnering with United Way for volunteer management          | Volunteer Management Branch         |
| Establishment of the Medical Coordination Center in the EOC  | Healthcare Group                    |
| Development of the resource ordering application and process | Healthcare Group Logistics Section  |
| Identified alternative housing for first responders          | Emergency Services Branch           |
| Non-traditional hospital surge plan draft                    | Healthcare Group                    |
| Developed and deployed the PCHD Testing Strike Team          | Polk County Public Health Group     |

| What  | Who                                |
|---|------------------------------------|
| Clarification on exposure criteria for responders     | Healthcare Group - CIEMSD          |
| Ongoing capture of successes/best practices           | Planning Section Chief             |
| Mitigation strategies implemented                     | County Jail and Juvenile Detention |
| Emerging Infectious Disease Surveillance tool         | CIEMSD                             |
| Strong and resilient Communicable Disease Team nurses | Polk County Public Health Group    |
| Airway bypass added to EMResource                     | Healthcare Group - CIEMSD          |
| MOAs returned from all MCC partners                   | Healthcare Group - MCC             |
| Logistics Ordering Process established and shared     | Logistics Section                  |
| WHO-TV "13 Days of Caring" campaign implemented       | Board of Supervisors               |

# Q&A



# Closing Comments

---

Adjourn