



Central Iowa COVID19 Update

Wednesday, December 2, 2020



Statistical Consulting

Dr. Meg Schaeffer





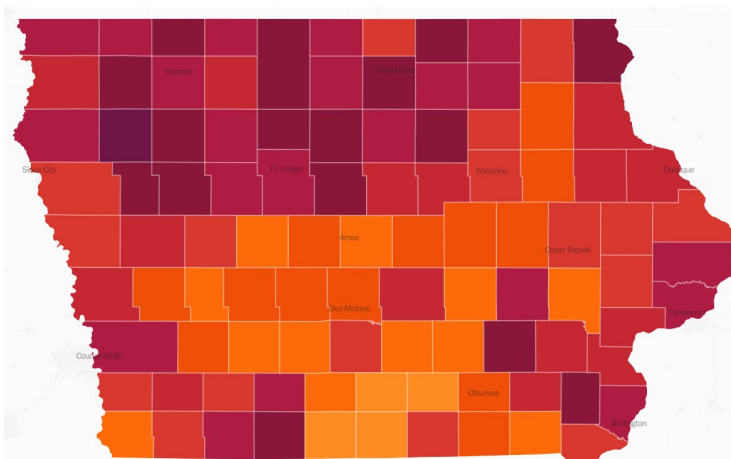
Quick Stats¹

| | Polk County | Iowa |
|--------------------------------------|-------------|-------|
| 7d Lab Test Positivity | 14.7% | 15% |
| 14d Lab Test Positivity | 16.5% | 18.5% |
| Total cases per 100,000 the last 7d | 405 | 453 |
| Total cases per 100,000 the last 14d | 1098 | 1219 |
| Average daily cases the last 7d | 283 | 2041 |
| Average 7-day new cases per 100,000 | 58 | 65 |

¹All data are sourced from <https://coronavirus.iowa.gov/pages/case-counts> with previous days refreshed daily. When recent data are unavailable, data from <https://github.com/nytimes/covid-19-data> may be used. Population of Polk County used is 490,161. Population of Iowa used is 3.155 million. Averages and percent positivity are subject to change with retrospectively refreshed data.

Critical Points, Media, and Research

- Polk County and Iowa case deceleration may be slowing or stopping based on trends the past few days.
- Influenza activity has not been detected, though is expected towards the end of December.
- CDC offers alternatives to the 14-day quarantine period depending on local circumstances. <https://www.cdc.gov/coronavirus/2019-ncov/more/scientific-brief-options-to-reduce-quarantine.html>
- Moderna applied for EUA on 11/30. <https://www.cnn.com/2020/11/30/health/moderna-vaccine-fda-eua-application/index.html>. In addition, Moderna's vaccine proved 100% effective against severe illness. <https://www.sciencemag.org/news/2020/11/absolutely-remarkable-no-one-who-got-modernas-vaccine-trial-developed-severe-covid-19>
- Societal norms and government mask wearing policies are effective mitigation strategies to reduce the spread of COVID-19. Early adoption greatly reduced mortality. <https://www.ajtmh.org/content/journals/10.4269/ajtmh.20-1015>
- A study in Nature identified full-service restaurants as the source of the greatest number of infections following reopening. <https://www.nature.com/articles/s41586-020-2923-3>



[NYT US Activity](#)



School Statistics – Polk County

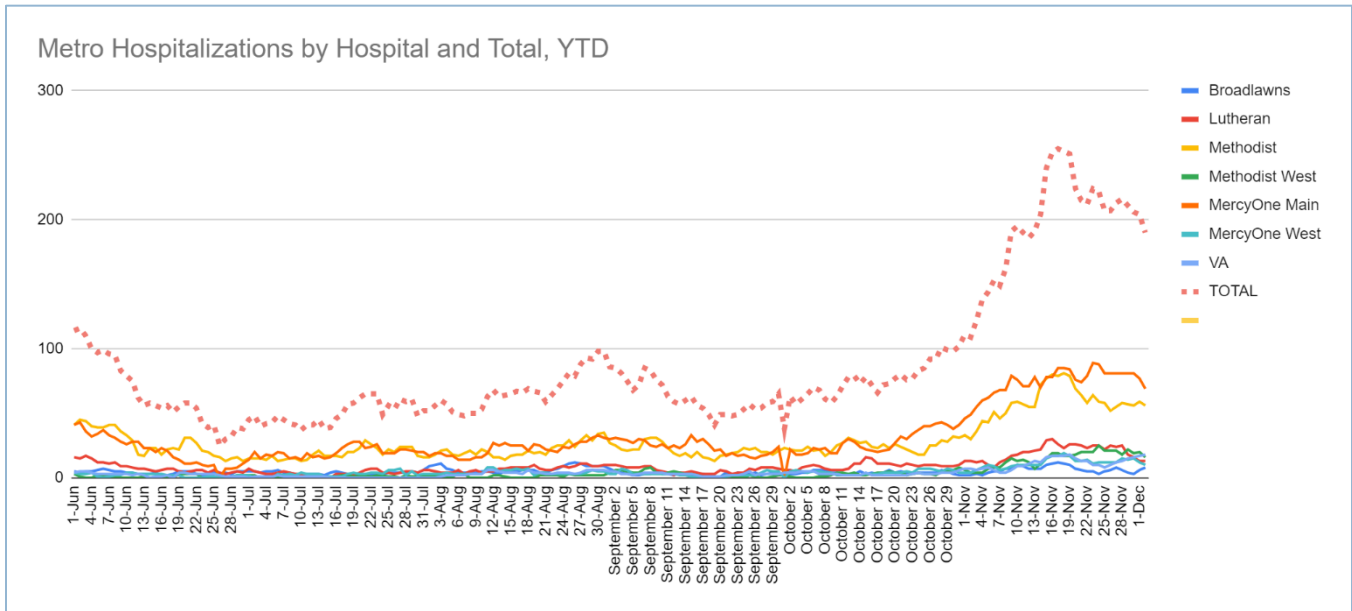
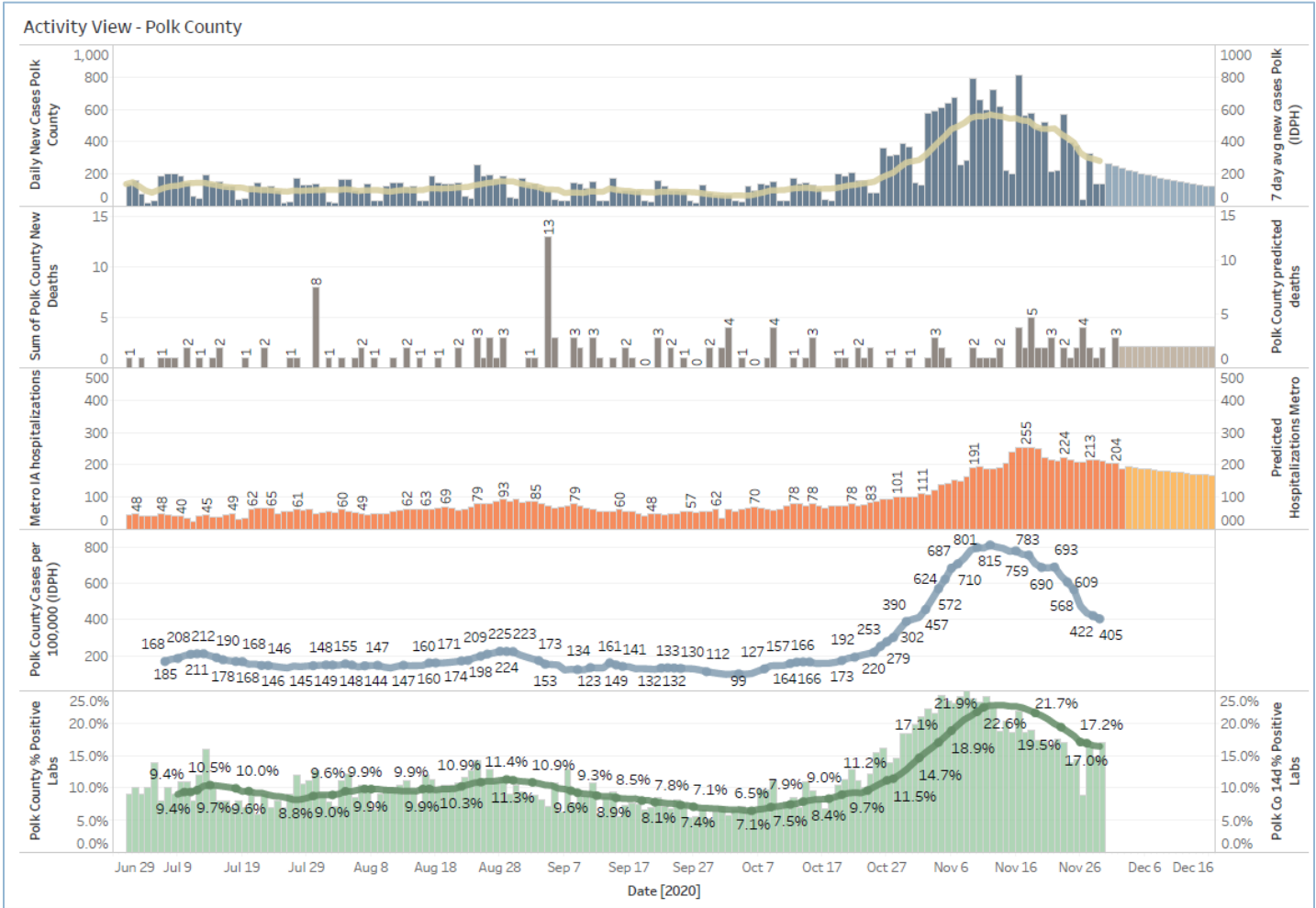
*School data will be updated on 12/7

| New Student/Staff Cases | | | | | |
|-------------------------|-------|-------|--------|--------|--------|
| Week Ending | 1-Nov | 8-Nov | 15-Nov | 22-Nov | 29-Nov |
| DMPS* | 5 | 15 | 15 | 18 | 5 |
| Ankeny | 46 | 46 | 52 | 52 | 54 |
| Waukee | 67 | 118 | 108 | 75 | 53 |
| WDM | 25 | 51 | 99 | 42 | 10 |
| Johnston | 44 | 58 | 73 | 50 | 38 |
| SE Polk | 33 | 35 | 58 | 55 | 54 |
| Urbandale | 7 | 8 | 43 | 34 | 23 |
| DCG | | 19 | 33 | 30 | 42 |
| Bondurant | | 18 | 17 | 29 | 29 |
| North Polk | | 8 | 10 | 10 | 8 |
| Ballard | | | | 14 | 1 |
| Saydel | | 10 | 17 | 4 | 0 |
| Total | 227 | 331 | 525 | 413 | 317 |

| Students/Staff in Quarantine | | | | | |
|------------------------------|-------|-------|--------|--------|--------|
| Week Ending | 1-Nov | 8-Nov | 15-Nov | 22-Nov | 29-Nov |
| DMPS* | N/A | N/A | N/A | N/A | N/A |
| Ankeny | 225 | 225 | 370 | 370 | 273 |
| Waukee | 332 | 500 | 575 | 384 | 160 |
| WDM | 146 | 204 | 239 | 70 | 12 |
| Johnston | 586 | 667 | 527 | 318 | 286 |
| SE Polk | 186 | 211 | 307 | 380 | 401 |
| Urbandale | 39 | 97 | 180 | 223 | 179 |
| DCG | | 80 | 159 | 216 | 82 |
| Bondurant | | 148 | 160 | 167 | 138 |
| North Polk | | 103 | 101 | 90 | 61 |
| Ballard | | | | 77 | 7 |
| Saydel | | 109 | 88 | 65 | 46 |
| Total | 1514 | 2344 | 2706 | 2360 | 1645 |

*DMPS combines student and staff cases and only reports daily

Central Iowa COVID19 Update



Central Iowa COVID19 Update

