

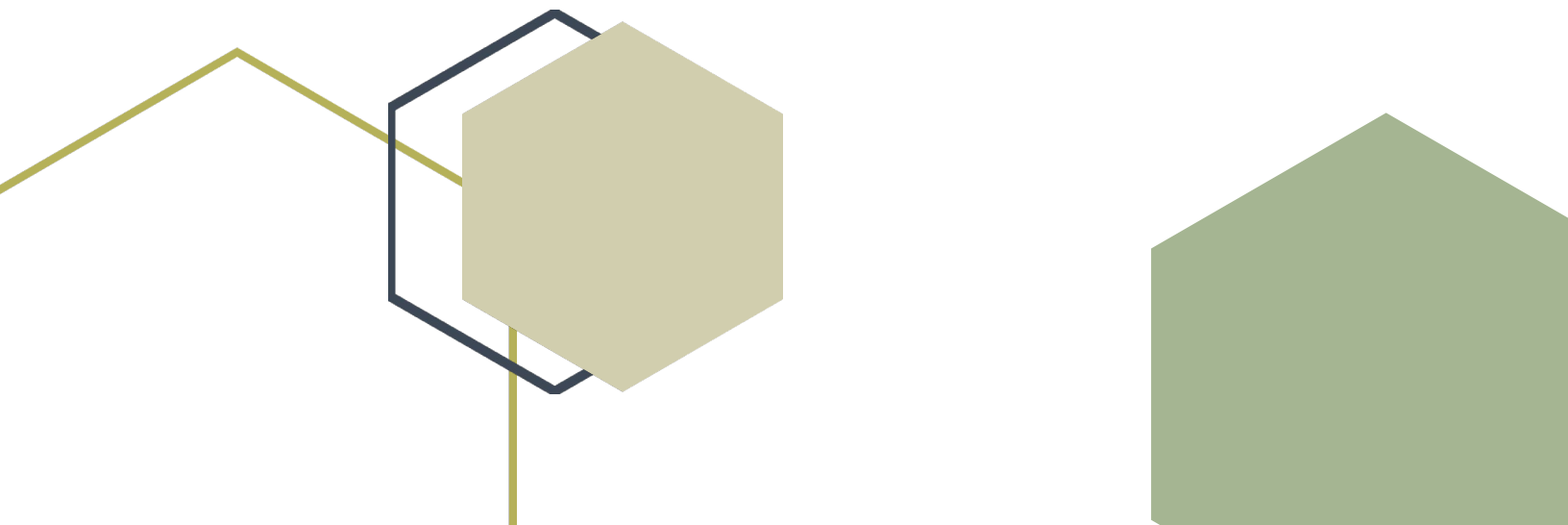
Central Iowa COVID19 Update

Wednesday, June 22, 2022



Statistical Consulting

Dr. Meg Schaeffer





Quick Stats

	Polk County	Next Highest Target**	Iowa
Community Metrics			
Percent of population with at least 1 dose*	74.7%		68.3%
Percent of population with fully vaccinated*	68.2%	85%	62.4%
Average daily cases the last 7d	131		693
CDC County Level**	Low	Med	NA
Total cases per 100,000 the last 7d**	187	>200	154
Healthcare Metrics			
Percent of staffed inpatient beds occupied by COVID-19 patients (7-day average)**	3.4%	10-14%	2.6%
New COVID-19 admissions per 100,000 population (7-day total)**	5.5	10-19.9	7.5
CDC Community Transmission Level (For Healthcare use)	High	High	High
<p>Notes: Community Metrics are <u>defined by CDC</u> and should be used to determine the impact of COVID-19 on communities and take action. Healthcare metrics are also <u>defined by CDC</u> and are used to assist healthcare providers in making planning and mitigation decisions.</p> <p>*Vaccine Information Iowa COVID-19 Information</p> <p>All data are sourced from Novel Coronavirus - COVID-19 Reporting (iowa.gov) with previous days refreshed weekly. The population of Polk County used is 490,161. Population of Iowa used is 3.155 million. Averages and percent positivity are subject to change with retrospectively refreshed data.</p> <p>**CDC COVID Data Tracker</p>			

Critical Points, Media, and Research

State case models show continued moderate levels of cases with the possibility of a slight decrease. Polk County case trends are gradually declining. The U.S. trend is struggling to decrease as several states are experiencing increases in case counts. Hospitalizations in Polk County are stable though moderately high as well. CDC's advisory committee on immunization practices (ACIP) recommended vaccination of young children earlier this week following approval from FDA for use of both vaccines.

News & Research

- [Dispensing of Oral Antiviral Drugs for Treatment of COVID-19 by Zip Code-Level Social Vulnerability — United States, December 23, 2021–May 21, 2022](#)
- [Hospitalization and Emergency Department Encounters for COVID-19 After Paxlovid Treatment — California, December 2021–May 2022](#)
- [COVID-19 Cases and Hospitalizations Among Medicare Beneficiaries With and Without Disabilities — United States, January 1, 2020–November 20, 2021](#)
- [Trends in Acute Hepatitis of Unspecified Etiology and Adenovirus Stool Testing Results in Children — United States, 2017–2022](#)
- [Notes from the Field: COVID-19–Associated Mortality Risk Among Long-Term Care Facility Residents and Community-Dwelling Adults Aged ≥65 Years — Illinois, December 2020 and January 2022](#)
- [Notes from the Field: Diagnosis and Investigation of Pneumonic Plague During a Respiratory Disease Pandemic — Wyoming, 2021](#)
- [Immunogenicity and reactogenicity of an inactivated SARS-CoV-2 vaccine \(BBV152\) in children aged 2–18 years: interim data from an open-label, non-randomised, age de-escalation phase 2/3 study - The Lancet Infectious Diseases](#)
- [Impact of COVID-19 pandemic on asthma exacerbations: Retrospective cohort study of over 500,000 patients in a national English primary care database](#)



Vaccine Progress

Polk Co Vaccination Rates CDC Covid Data Tracker Data (*)	At Least One Dose	Difference prev week	Fully Vaccinated	Difference prev week
Total	366,184	76	334,047	73
% of Total Population	75%	0.0%	68%	0.1%
Population ≥ 5 Years of Age	366,132	76	334,047	73
% of Population ≥ 5 Years of Age	80%	0.0%	73%	0.0%
Population ≥ 12 Years of Age	347,969	54	317,707	59
% of Population ≥ 12 Years of Age	85%	0.0%	78%	0.0%
Population ≥ 18 Years of Age	319,498	48	291,816	54
% of Population ≥ 18 Years of Age	87%	0.0%	79%	0.0%
Population ≥ 65 Years of Age	69,048	13	64,745	15
% of Population ≥ 65 Years of Age	95%	0.0%	95%	0.0%

(*) CDC COVID Data Tracker Data: CDC data includes vaccine administration data from all sources, including IRIS*, other state immunization registries, and federal entities (Bureau of Prisons, Veterans Health Administration, Department of Defense, and Federal Long-Term Care program). These doses may not have been reported to IRIS.

Polk Co People with a First Booster(**)	Data	Difference prev week
Total	366,184	76
% of Fully Vaccinated Population with a 1 st Booster Dose	75%	0.0%
Fully Vaccinated Population ≥ 12 Years of Age with a 1 st Booster Dose	366,132	76
% of Fully Vaccinated Population ≥ 12 Years of Age with a 1 st Booster Dose	80%	0.0%
Fully Vaccinated Population ≥ 18 Years of Age with a 1 st Booster Dose	347,969	54
% of Fully Vaccinated Population ≥ 18 Years of Age with a 1 st Booster Dose	85%	0.0%
Fully Vaccinated Population ≥ 65 Years of Age with a 1 st Booster Dose	319,498	48
% of Fully Vaccinated Population ≥ 65 Years of Age with a 1 st Booster Dose	87%	0.0%

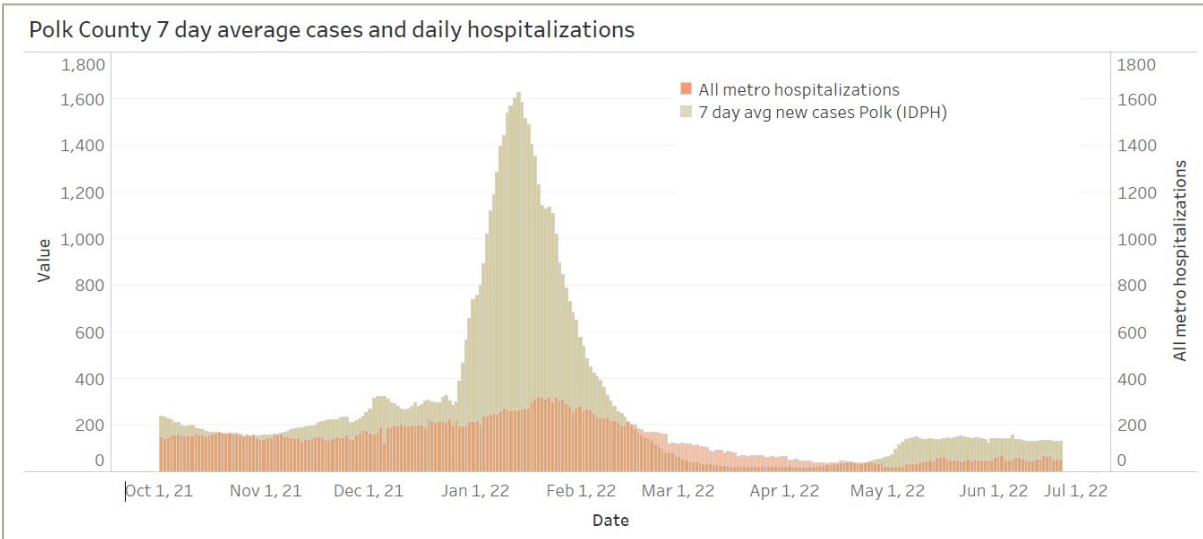
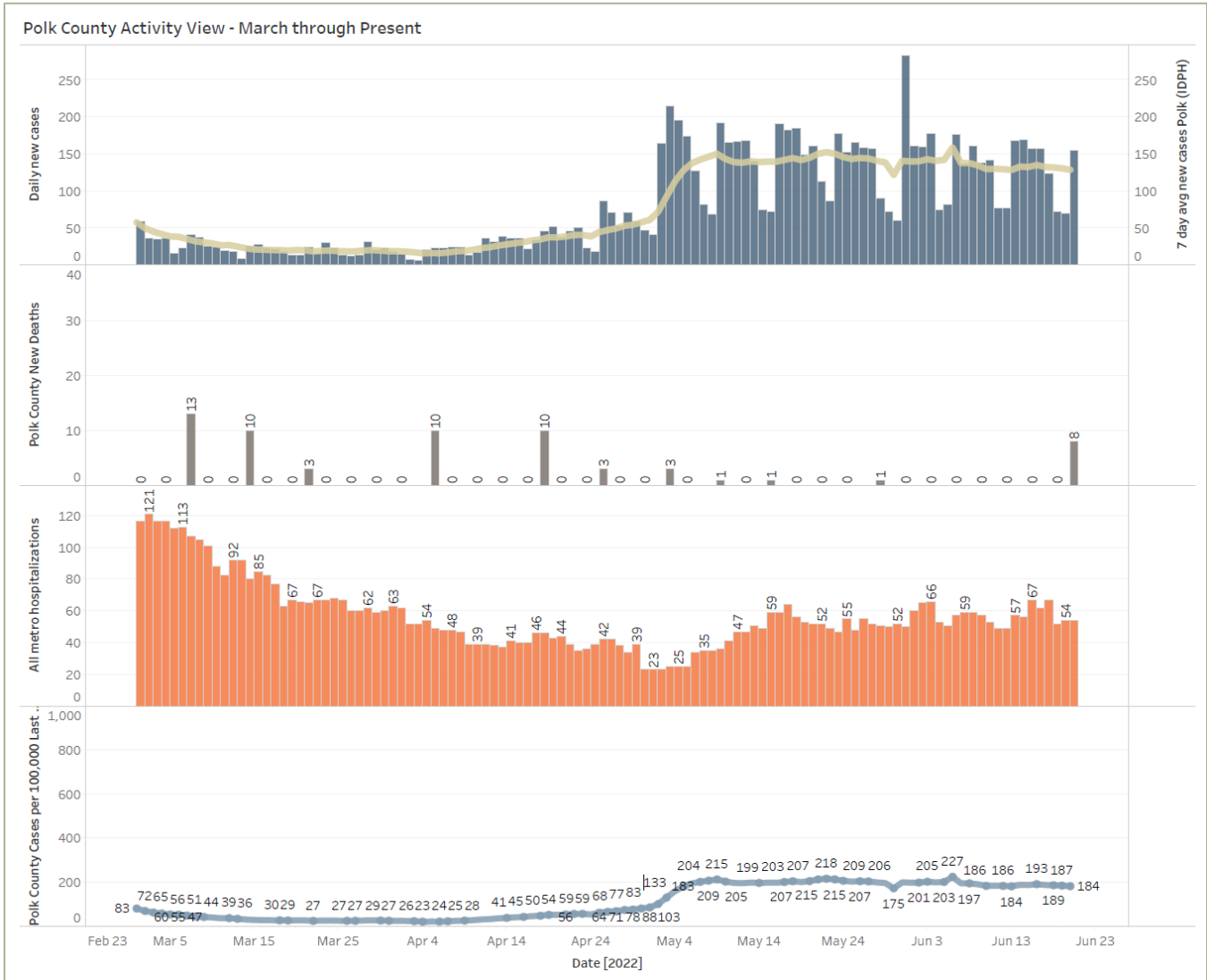
(**)The count of people who received a 1st booster dose includes anyone who is fully vaccinated and has received another dose of COVID-19 vaccine since August 13, 2021. This includes people who received 1st booster dose and people who received additional doses.

Link to Zip Code-Level Vaccination

Rates - <https://arcg.is/1nTry4>

School Data – School reporting is paused for summer break

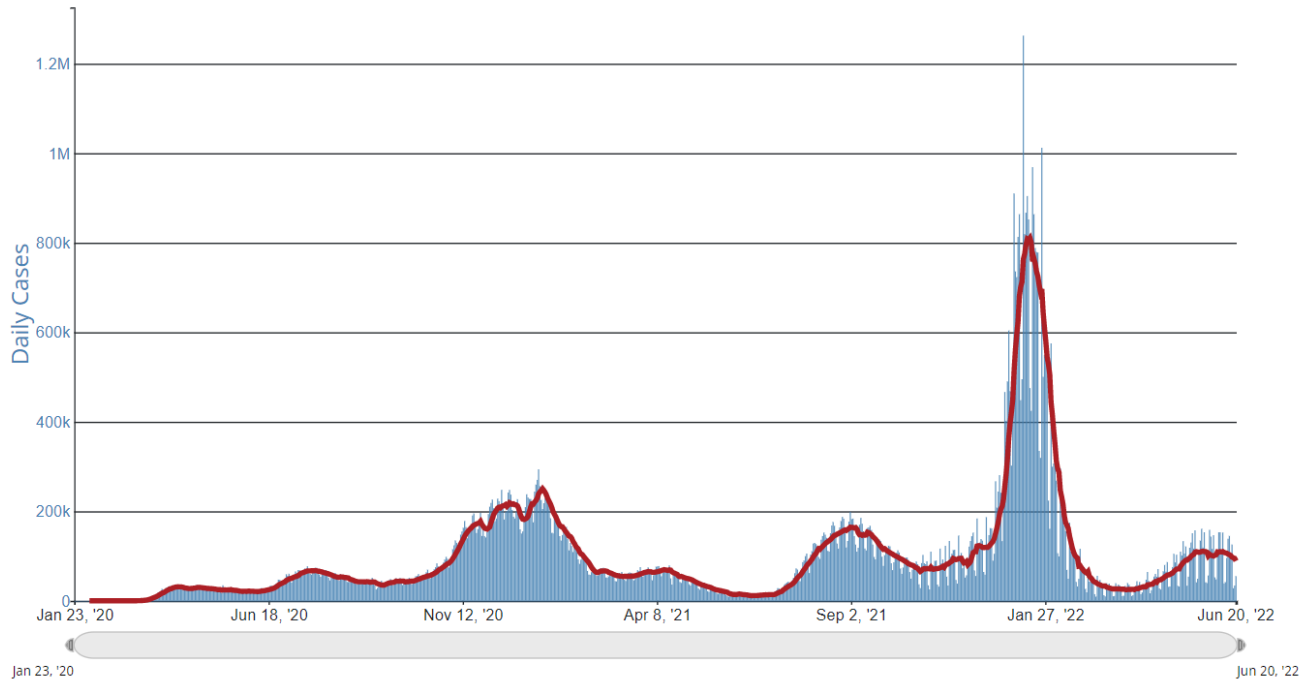
Central Iowa COVID19 Update



Central Iowa COVID19 Update



Daily Trends in Number of COVID-19 Cases in The United States Reported to CDC



	CASES DAILY AVG.	PER 100,000	14-DAY CHANGE	TEST POSITIVITY	HOSPITALIZED DAILY AVG.	PER 100,000	14-DAY CHANGE	DEATHS DAILY AVG.	PER 100,000	FULLY VACCINATED
United States	96,218	29	-15%	14%	29,934	9	+2%	289.4	0.09	67%
Puerto Rico ›	3,375	100	-6%	33%	397	12	-1%	6.4	0.19	79%
Hawaii ›	1,011	71	-12%	21%	220	16	+6%	1.3	0.09	79%
Guam ›	96	57	+36%	—	—	—	—	0.3	0.17	83%
Florida ›	10,789	50	Flat	20%	3,431	16	+18%	49.1	0.23	68%
Alaska ›	349	48	+9%	16%	64	9	+44%	0	—	63%
New Mexico ›	936	45	+16%	13%	186	9	+19%	3.9	0.18	72%
California ›	15,090	38	-32%	11%	3,164	8	+11%	28.4	0.07	73%
Nevada ›	1,154	37	+13%	30%	413	13	+19%	5.9	0.19	61%
Kentucky ›	1,542	35	+6%	13%	453	10	+13%	7.3	0.16	58%
Louisiana ›	1,548	33	+11%	16%	271	6	+38%	2.6	0.06	54%