

# Central Iowa COVID19 Update

---

Wednesday, February 23, 2022



Statistical Consulting

Dr. Meg Schaeffer





## Quick Stats<sup>1</sup>

	Polk County	Next Target <sup>**</sup>	Iowa
Percent of population with at least 1 dose*	73.5%		67.2%
Percent of population with fully vaccinated*	66.6%	85%	61%
7d Lab Test Positivity	NA	<10%	NA
Total cases per 100,000 the last 7d	169	<100	153
CDC County Transmission Level*	High	Substantial	
Average daily cases the last 7d	118		688

\*[Vaccine Information](#) | [Iowa COVID-19 Information](#)

All data are sourced from <https://coronavirus.iowa.gov/pages/case-counts> with previous days refreshed weekly. The population of Polk County used is 490,161. Population of Iowa used is 3.155 million. Averages and percent positivity are subject to change with retrospectively refreshed data.

\*\*[CDC COVID Data Tracker](#)

\*\*\*[COVID-19 County Check Tool](#) | [CDC](#)

## Critical Points, Media, and Research

Cases continue to decline in Polk County and across the state. Iowa is averaging ~700 cases per day and Polk County is still above 100 cases per day. Polk County should reach the next lowest CDC transmission level of "substantial" sometime next week. Hospitalizations have dropped as well, though there are 167 total and of those 61 are actively infected inpatients in metro hospitals. The omicron subvariant BA.2 is overtaking the original strain in terms of prevalence; however, case counts and hospitalizations are still declining in areas where BA.2 is dominant.

## News & Research

- [CDC updates guidance for intervals between COVID-19 vaccine doses](#)
- [New studies bring BA.2 variant into sharper focus](#)
- [Sanofi-Glaxo Vaccine May Threaten Pfizer, Moderna in Covid-19 Booster Market](#)
- [WHO says omicron subvariant is not stopping global cases from falling, and U.S. nearing 940,000 COVID deaths](#)
- [New Sanofi and GSK vaccine demonstrates strong protection against severe Covid-19 in clinical trials](#)
- [Population Immunity and Covid-19 Severity with Omicron Variant in South Africa | NEJM](#)
- [Effectiveness of BNT162b2 Vaccine against Critical Covid-19 in Adolescents | NEJM](#)
- Pediatric Emergency Department Visits Before and During the COVID-19 Pandemic— United States, January 2019–January 2022. Link [here](#).
- Pediatric Emergency Department Visits Associated with Mental Health Conditions Before and During the COVID-19 Pandemic — United States, January 2019–January 2022. Link [here](#).
- Multistate Outbreak of SARS-CoV-2 B.1.1.529 (Omicron) Variant Infections Among Persons in a Social Network Attending a Convention — New York City, November 18–December 20, 2021. Link [here](#).
- Investigation of SARS-CoV-2 Transmission Associated With a Large Indoor Convention — New York City, November–December 2021. Link [here](#).
- Effectiveness of Maternal Vaccination with mRNA COVID-19 Vaccine During Pregnancy Against COVID-19–Associated Hospitalization in Infants Aged <6 Months — 17 States, July 2021–January 2022. Link [here](#). Listen to a recorded CDC Media Telebriefing about this MMWR [here](#).
- Hospitalizations of Children and Adolescents with Laboratory-Confirmed COVID-19 — COVID-NET, 14 States, July 2021–January 2022. Link [here](#).
- *Notes from the Field: Outbreak of COVID-19 Among a Highly Vaccinated Population Aboard a U.S. Navy Ship After a Port Visit — Reykjavik, Iceland, July 2021.* Link [here](#).



## Vaccine Progress

Polk Co Vaccination Rates CDC Covid Data Tracker Data (*)	At Least One Dose	Difference prev week	Fully Vaccinated	Difference prev week
<b>Total</b>	360,239	538	326,676	1,233
<b>% of Total Population</b>	73.5%	0.1%	66.6%	0.3%
<b>Population ≥ 5 Years of Age</b>	360,200	536	326,676	1,233
<b>% of Population ≥ 5 Years of Age</b>	79.0%	0.1%	71.7%	0.3%
<b>Population ≥ 12 Years of Age</b>	343,439	424	312,211	684
<b>% of Population ≥ 12 Years of Age</b>	84.0%	0.1%	76.4%	0.1%
<b>Population ≥ 18 Years of Age</b>	315,591	378	287,044	579
<b>% of Population ≥ 18 Years of Age</b>	85.5%	0.1%	77.8%	0.1%
<b>Population ≥ 65 Years of Age</b>	68,395	25	63,457	40
<b>% of Population ≥ 65 Years of Age</b>	95.0%	0.0%	95.0%	0.0%

(\*) CDC COVID Data Tracker Data: CDC data includes vaccine administration data from all sources, including IRIS\*, other state immunization registries, and federal entities (Bureau of Prisons, Veterans Health Administration, Department of Defense, and Federal Long-Term Care program). These doses may not have been reported to IRIS.

Link to Zip Code-Level Vaccination

Rates - <https://arcg.is/1nTry4>

Polk Co People Fully Vaccinated with a Booster	Data	Difference prev week
<b>Total</b>	168,457	1,262
% of Fully Vaccinated Population with a Booster Dose	51.6%	0.3%
Fully Vaccinated Population ≥ 18 Years of Age with a Booster Dose	168,428	1,259
% of Fully Vaccinated Population ≥ 18 Years of Age with a Booster Dose	53.9%	0.3%
Fully Vaccinated Population ≥ 50 Years of Age with a Booster Dose	162,695	1,080
% of Fully Vaccinated Population ≥ 50 Years of Age with a Booster Dose	56.7%	0.3%
Fully Vaccinated Population ≥ 65 Years of Age with a Booster Dose	50,517	146
% of Fully Vaccinated Population ≥ 65 Years of Age with a Booster Dose	79.6%	0.2%

(\*)The count of people who received a booster dose includes anyone who is fully vaccinated and has received another dose of COVID-19 vaccine since August 13, 2021. This includes people who received booster doses and people who received additional doses.

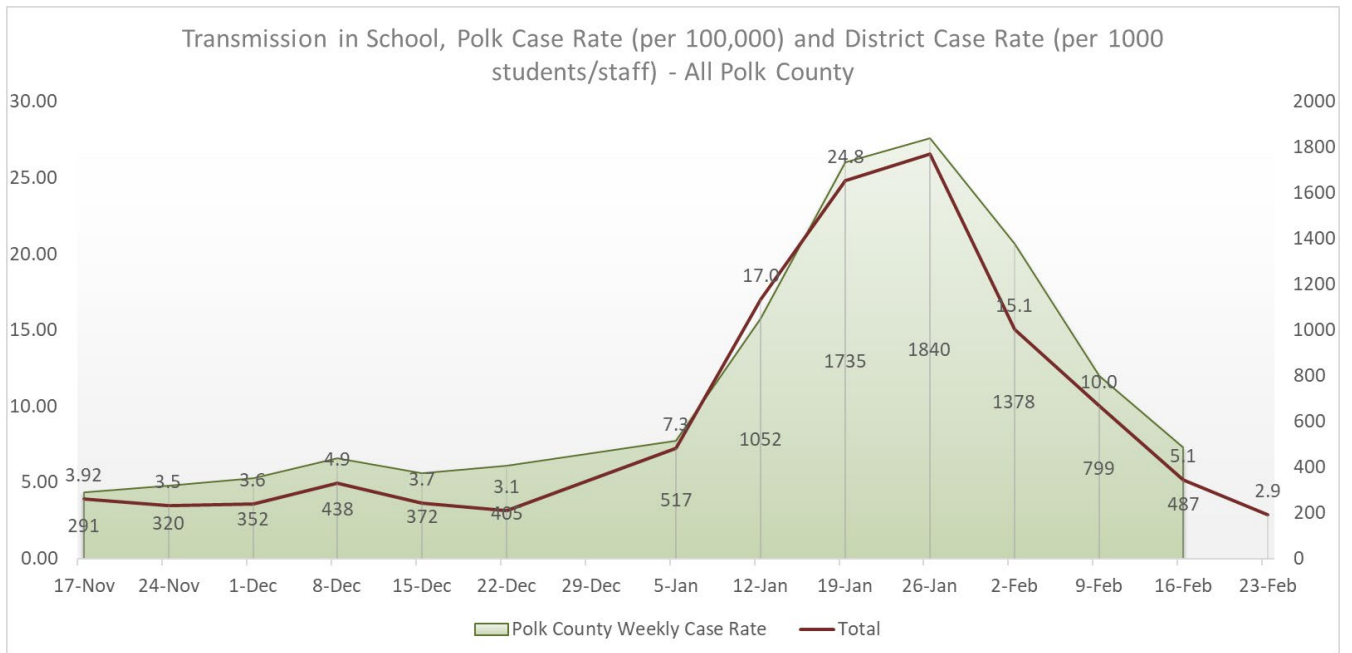
# Central Iowa COVID19 Update



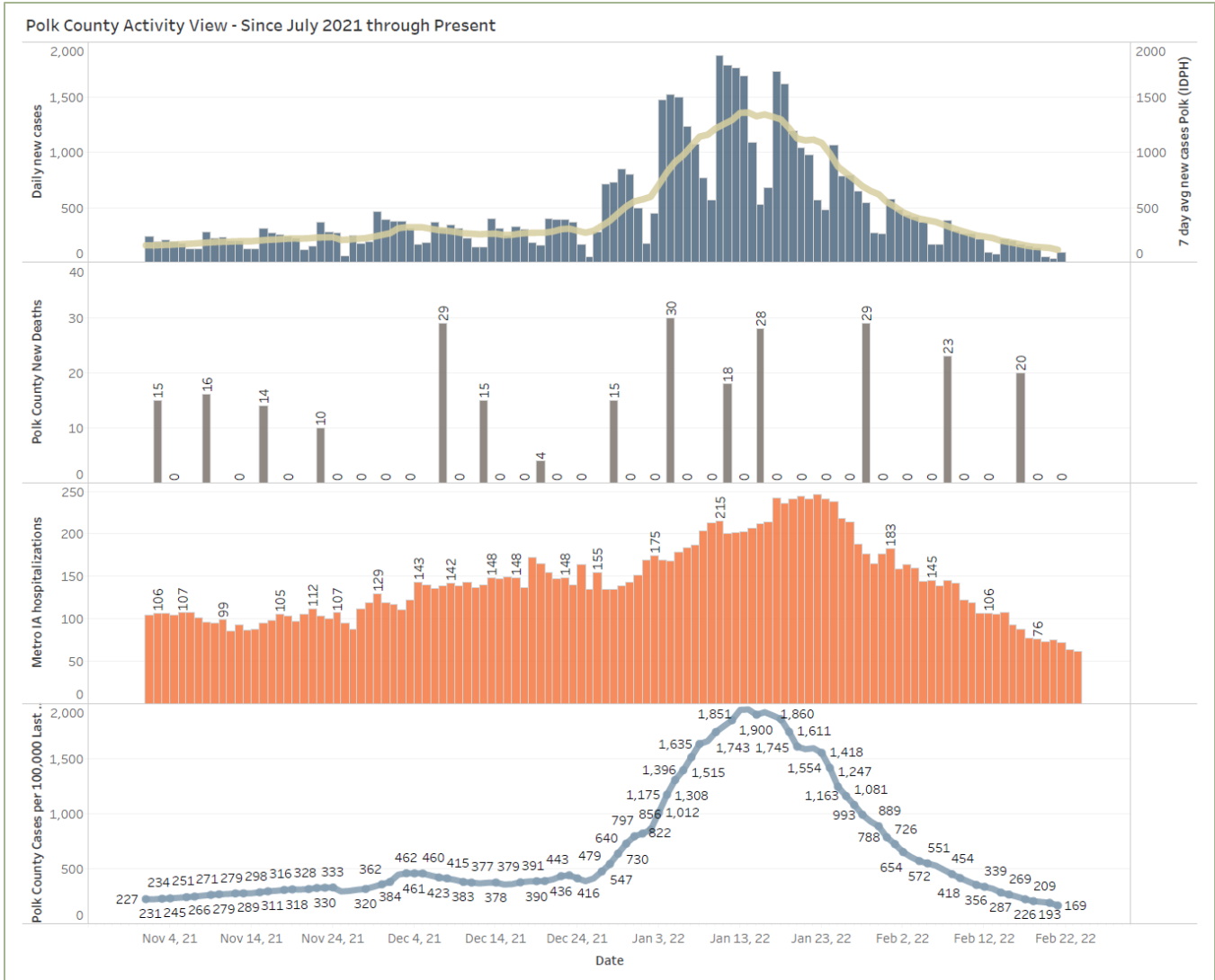
## School Data

Week Ending	17-Nov	24-Nov	1-Dec	8-Dec	15-Dec	22-Dec	5-Jan	12-Jan	19-Jan	26-Jan	2-Feb	9-Feb	16-Feb	23-Feb
DMPS*	2.12	2.24	3.58	5.06	3.79	3.03	7.91	14.79	11.45	19.45	8.45	10.06	2.70	1.61
Ankeny	4.00	3.33	3.25	5.83	5.00	4.67	NA	18.42	32.08	40.58	24.83	18.33	6.42	3.42
Waukee	6.70	8.09	4.43	4.52	3.57	3.04	8.26	15.74	13.22	13.04	6.96	3.22	1.74	0.78
WDM	5.67	5.00	5.00	7.67	5.11	3.78	NA	19.67	31.67	33.44	26.11	11.56	9.11	3.33
Johnston	3.43	0.86	2.00	3.43	2.86	3.43	NA	8.29	24.57	36.29	8.71	10.29	2.14	2.86
SE Polk	2.29	3.14	4.14	5.29	2.86	1.71	1.86	13.29	14.71	11.57	10.29	4.86	2.14	1.00
Urbandale	3.25	4.25	3.00	3.75	1.75	2.75	11.00	29.00	46.00	31.50	20.00	12.00	11.75	7.00
Total	3.92	3.5	3.6	4.9	3.7	3.1	7.3	17.0	24.8	26.6	15.1	10.0	5.1	2.9

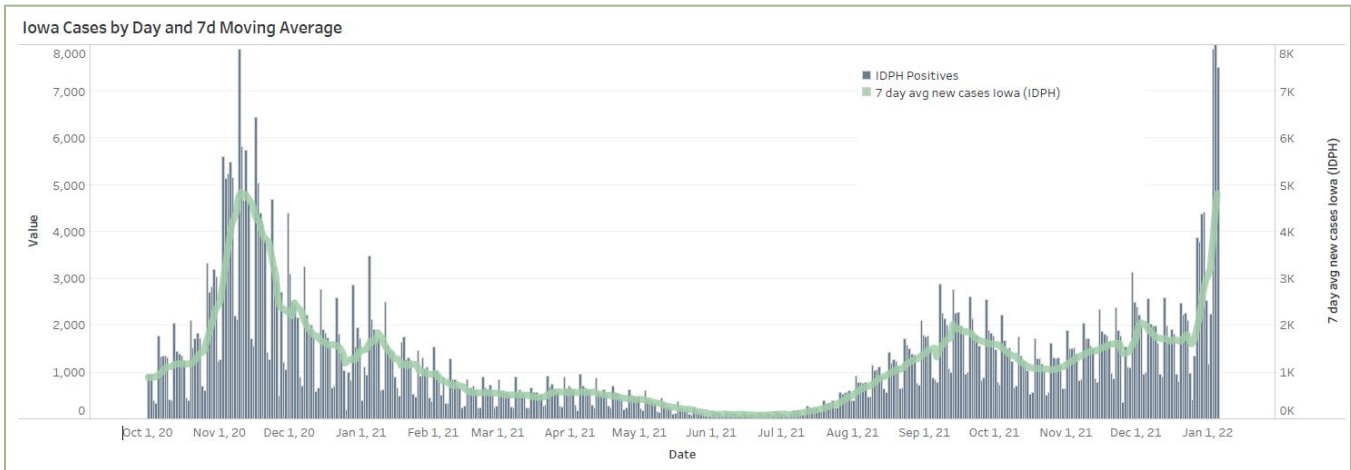
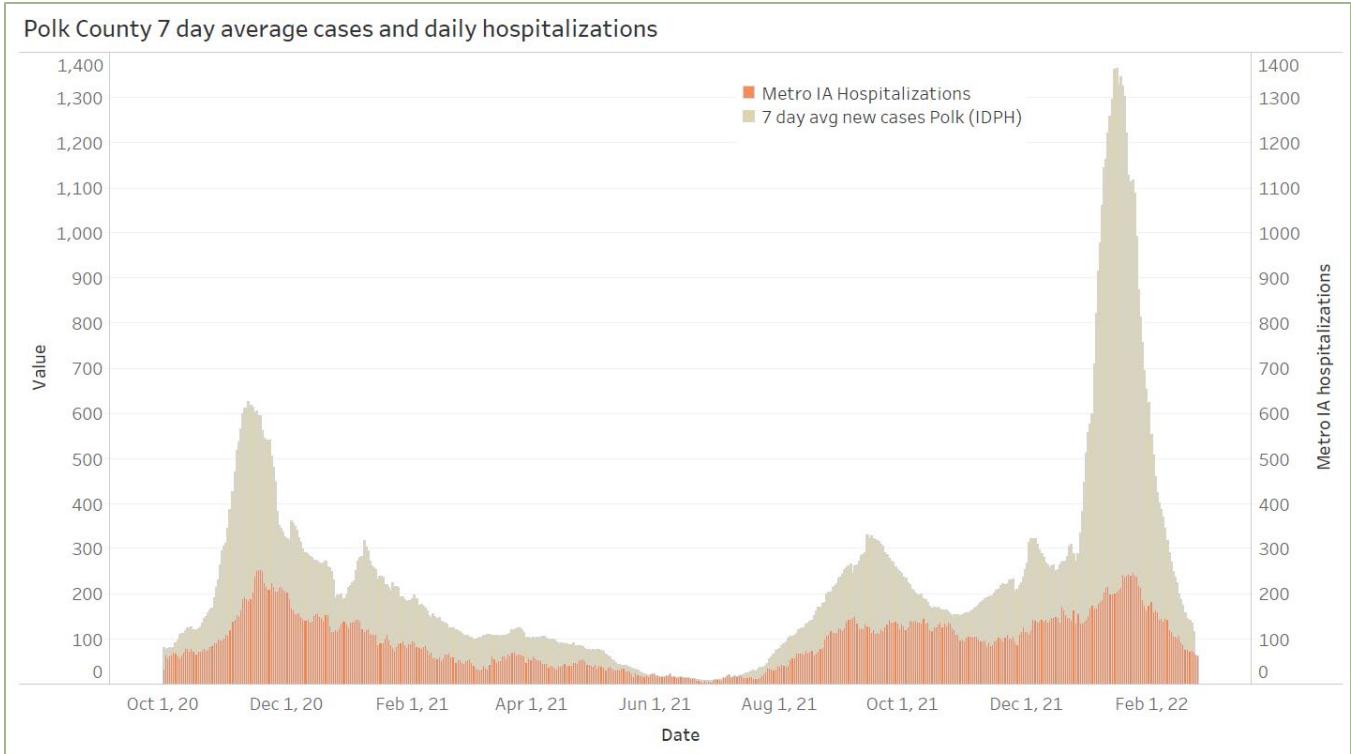
New Student/Staff Cases														
Week Ending	17-Nov	24-Nov	1-Dec	8-Dec	15-Dec	22-Dec	5-Jan	12-Jan	19-Jan	26-Jan	2-Feb	9-Feb	16-Feb	23-Feb
DMPS*	70	74	118	167	125	100	261	488	378	642	279	332	89	53
Ankeny	48	40	39	70	60	56	NA	221	385	487	298	220	77	41
Waukee	90	105	63	65	48	36	120	210	186	150	80	37	20	9
WDM	51	45	45	69	46	34	NA	177	285	301	235	104	82	30
Johnston	24	6	14	24	20	24	NA	72	208	254	61	72	15	20
SE Polk	16	22	29	37	20	12	13	93	103	81	72	34	15	7
Urbandale	13	17	12	15	7	11	44	116	184	126	80	48	47	28
Total	312	309	320	447	326	273	438	1377	1729	2041	1105	847	345	188
Polk Weekly Cases	1428	1566	1727	2144	1825	1983	2532	5156	8502	9015	6752	3913	2385	
Polk County Weekly Case Rate	291	320	352	438	372	405	517	1052	1735	1840	1378	799	487	



# Central Iowa COVID19 Update



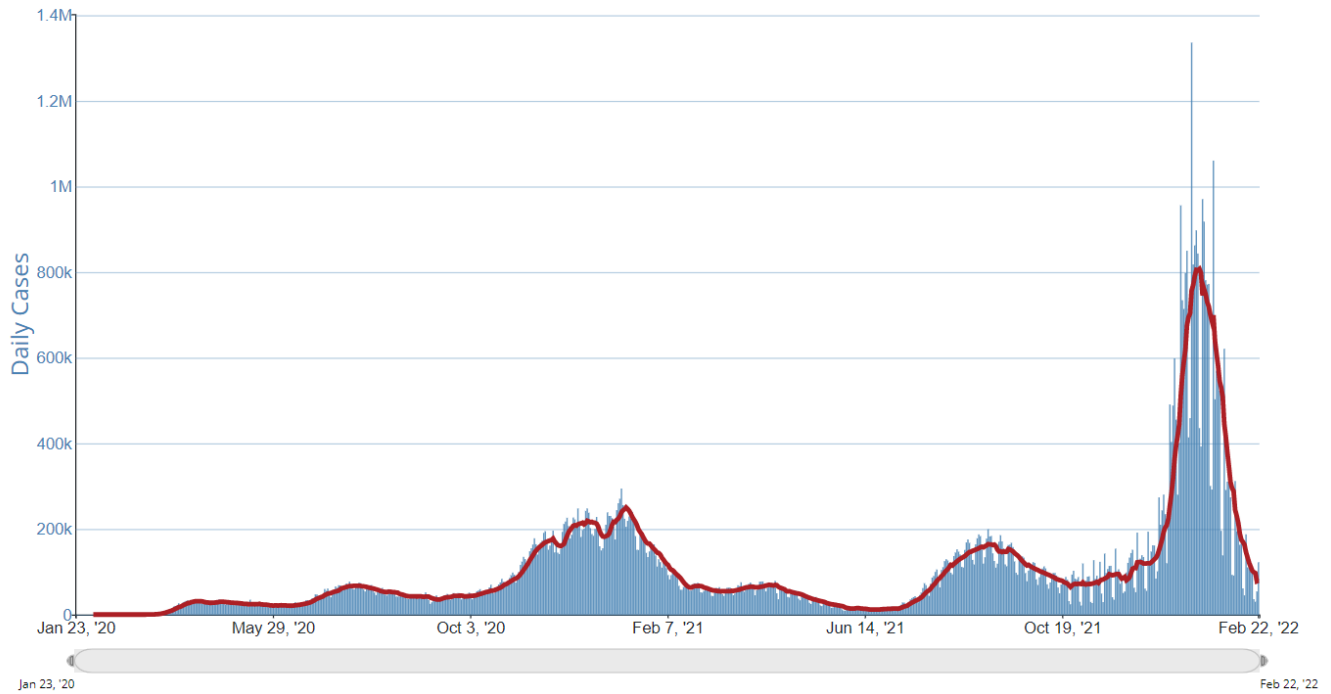
# Central Iowa COVID19 Update



# Central Iowa COVID19 Update



Daily Trends in Number of COVID-19 Cases in The United States Reported to CDC



	CASES DAILY AVG.	PER 100,000	14-DAY CHANGE	HOSPITALIZED DAILY AVG.	PER 100,000	14-DAY CHANGE	DEATHS DAILY AVG.	PER 100,000	FULLY VACCINATED
United States	81,823	25	-66%	62,464	19	-44%	1,959.9	0.59	65%
Northern Mariana Islands ›	162	301	-11%	—	—	—	0.3	0.53	79%
Guam ›	366	217	-43%	—	—	—	1.4	0.82	80%
Idaho ›	1,435	80	-22%	354	20	-36%	12.6	0.7	53%
Kentucky ›	3,462	77	-37%	1,560	35	-36%	31.4	0.7	56%
Maine ›	1,034	77	+9%	260	19	-32%	18.9	1.4	78%
Alaska ›	547	75	-65%	100	14	-36%	3.5	0.47	61%
Montana ›	653	61	-54%	200	19	-43%	6.3	0.59	56%
West Virginia ›	1,080	60	-56%	843	47	-29%	21.7	1.21	57%
New Hampshire ›	787	58	-24%	116	9	-51%	5.6	0.41	70%
Tennessee ›	2,922	43	-68%	2,035	30	-37%	73.8	1.08	53%