



Central Iowa COVID19 Update

Monday, December 14, 2020



Aperio

Statistical Consulting

Dr. Meg Schaeffer





Quick Stats¹

	Polk County	Iowa
7d Lab Test Positivity	12.8%	11.4%
14d Lab Test Positivity	15.0%	15.2%
Total cases per 100,000 the last 7d	333	334
Total cases per 100,000 the last 14d	793	839
Average daily cases the last 7d	239	1574
Average 7-day new cases per 100,000	49	50

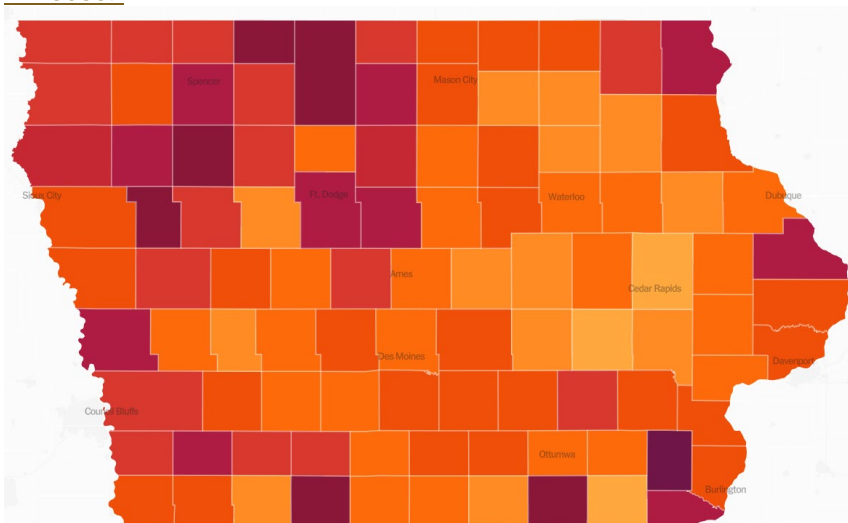
¹All data are sourced from <https://coronavirus.iowa.gov/pages/case-counts> with previous days refreshed daily. When recent data are unavailable, data from <https://github.com/nytimes/covid-19-data> may be used. Population of Polk County used is 490,161. Population of Iowa used is 3.155 million. Averages and percent positivity are subject to change with retrospectively refreshed data.

Critical Points, Media, and Research

- Polk County activity is remaining stable, though hospitalizations jumped today as did state hospitalizations.
- Flu activity remains minimal.
- The US exceeds 300,000 deaths. <https://www.usatoday.com/story/news/health/2020/12/14/covid-news-us-300-k-deaths-donald-trump-vaccine-pfizer/6532382002/>
- America's latest assessment of mental health is the lowest in two decades. https://news.gallup.com/poll/327311/americans-mental-health-ratings-sink-new-low.aspx?utm_source=alert&utm_medium=email&utm_content=morelink&utm_campaign=syndication

Vaccine

- Walgreens and CVS may have vaccine by early spring. <https://www.cnbc.com/2020/12/14/covid-vaccine-cvs-walgreens-early-spring.html>
- The US will hold back half of initial doses to ensure second doses are received. <https://www.nytimes.com/live/2020/12/09/world/covid-19-coronavirus#the-us-will-initially-hold-back-half-the-first-vaccine-supply>
- People with severe allergies may need to wait to receive the Pfizer vaccine after two reactions were reported among healthcare workers in the UK. <https://www.nytimes.com/live/2020/12/09/world/covid-19-coronavirus#the-uk-says-people-with-severe-allergies-should-not-take-the-pfizer-biontech-vaccine-while-two-reactions-are-under-investigation>
- The Pfizer vaccine results in an estimated 50% effectiveness one week after the first dose. <https://www.nbcnews.com/health/health-news/fda-pfizer-s-covid-19-vaccine-safe-effective-after-one-n1250337>





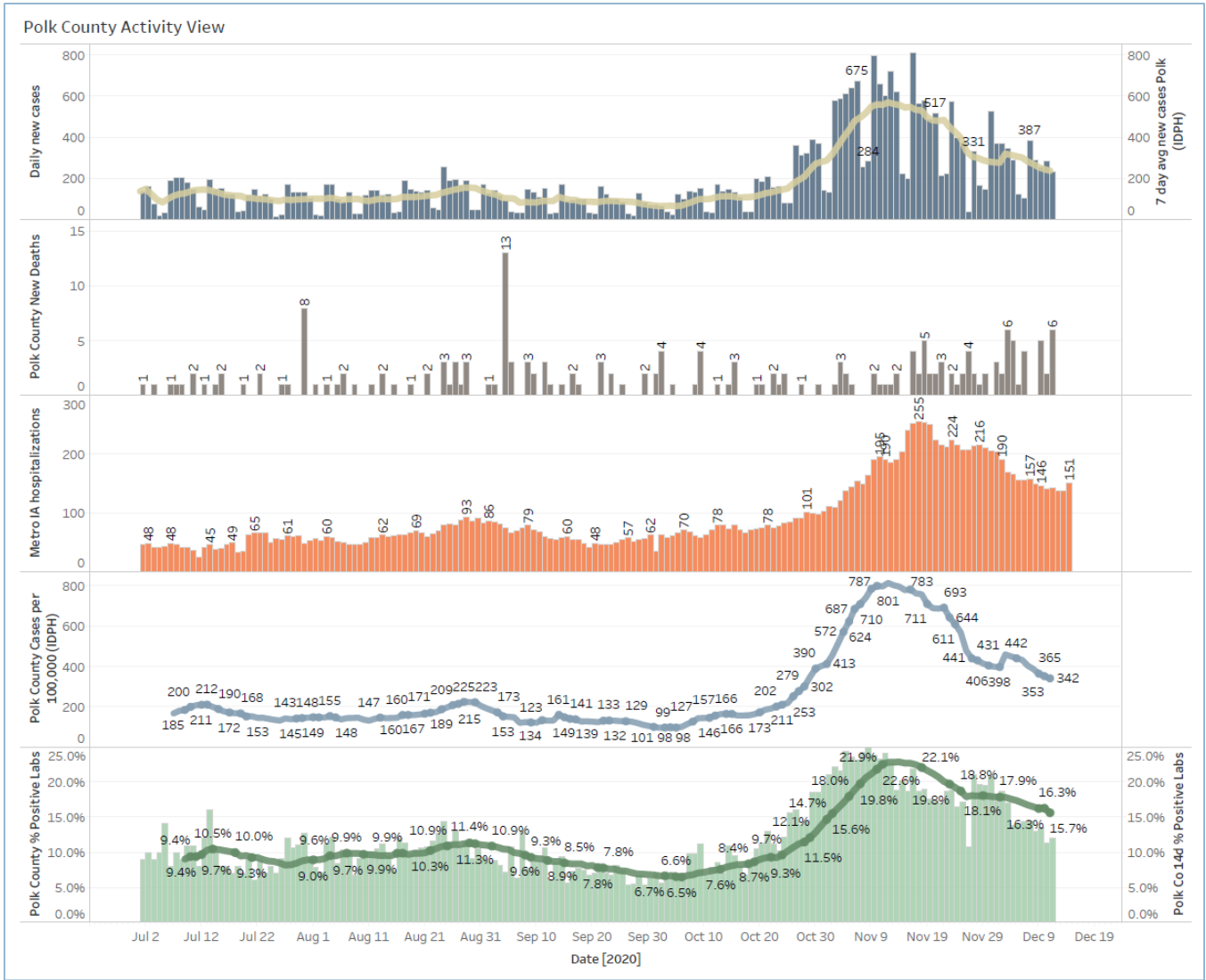
School Statistics – Polk County

New Student/Staff Cases						
Week Ending	1-Nov	8-Nov	15-Nov	22-Nov	29-Nov	13-Dec
DMPS*	5	15	15	18	5	22
Ankeny	46	46	52	52	54	39
Waukee	67	118	108	75	53	40
WDM	25	51	99	42	10	24
Johnston	44	58	73	50	38	16
SE Polk	33	35	58	55	54	21
Urbandale	7	8	43	34	23	14
DCG		19	33	30	42	15
Bondurant		18	17	29	29	8
North Polk		8	10	10	8	2
Ballard				14	1	2
Saydel		10	17	4	0	3
Total	227	331	525	413	317	206

Students/Staff in Quarantine						
Week Ending	1-Nov	8-Nov	15-Nov	22-Nov	29-Nov	13-Dec
DMPS*	N/A	N/A	N/A	N/A	N/A	N/A
Ankeny	225	225	370	370	273	172
Waukee	332	500	575	384	160	76
WDM	146	204	239	70	12	38
Johnston	586	667	527	318	286	73
SE Polk	186	211	307	380	401	126
Urbandale	39	97	180	223	179	49
DCG		80	159	216	82	69
Bondurant		148	160	167	138	97
North Polk		103	101	90	61	55
Ballard				77	40	34
Saydel		109	88	65	46	30
Total	1514	2344	2706	2360	1678	819

*DMPS does not report quarantined students

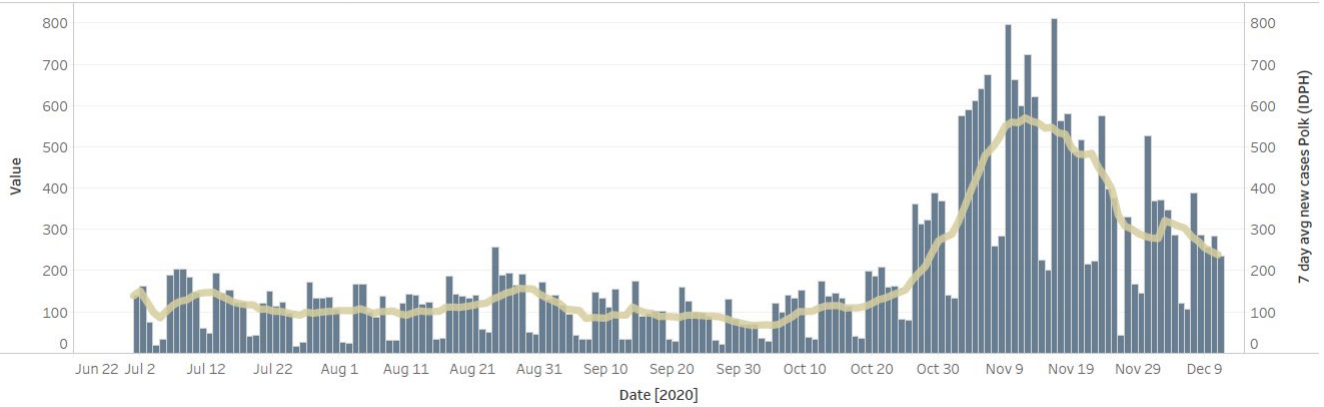
Central Iowa COVID19 Update



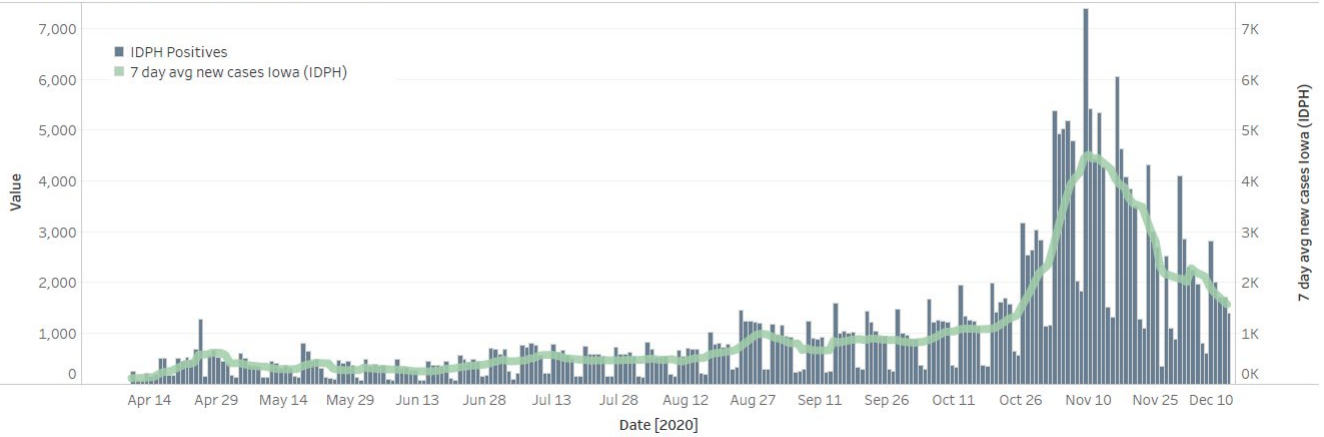
Central Iowa COVID19 Update



Polk County Cases by Day and 7d Moving Average



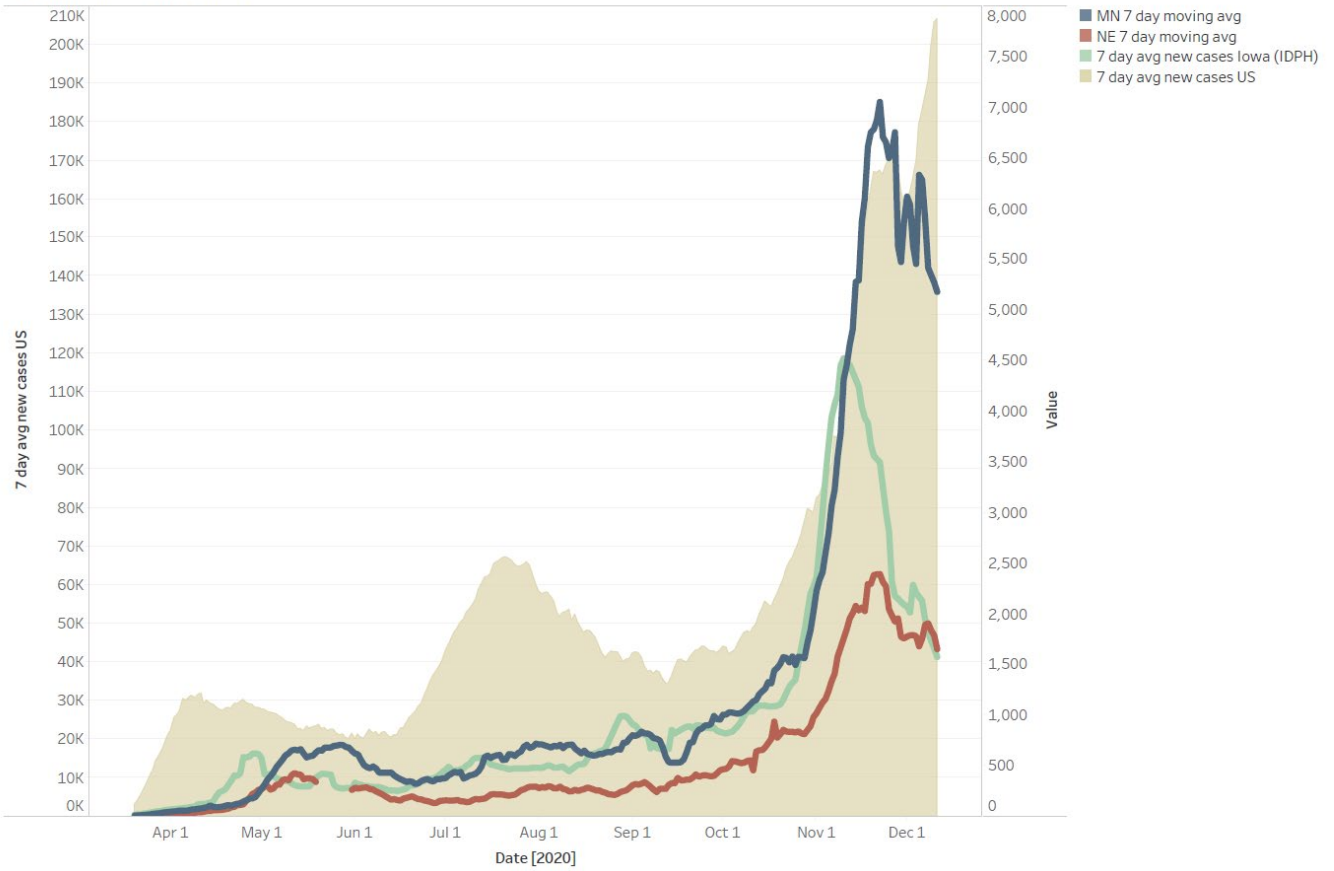
Iowa Cases by Day and 7d Moving Average



Central Iowa COVID19 Update



US and Border State Cases



The trends of 7 day avg new cases US, 7 day avg new cases US, 7 day avg new cases Iowa (IDPH), MN 7 day moving avg and NE 7 day moving avg for Date. Color shows details about 7 day avg new cases US, 7 day avg new cases Iowa (IDPH), MN 7 day moving avg and NE 7 day moving avg. The view is filtered on Date, which ranges from 03/20 to 12/14.