



Central Iowa COVID19 Update

Wednesday, January 6, 2021



Statistical Consulting

Dr. Meg Schaeffer





Quick Stats¹

	Polk County	Iowa
7d Lab Test Positivity	14.1%	12.5%
14d Lab Test Positivity	13.9%	14.2%
Total cases per 100,000 the last 7d	287	293
Total cases per 100,000 the last 14d	590	551
Average daily cases the last 7d	216	1319
Average 7-day new cases per 100,000	44	41.8

¹All data are sourced from <https://coronavirus.iowa.gov/pages/case-counts> with previous days refreshed daily. When recent data are unavailable, data from <https://github.com/nytimes/covid-19-data> may be used. Population of Polk County used is 490,161. Population of Iowa used is 3.155 million. Averages and percent positivity are subject to change with retrospectively refreshed data.

Critical Points, Media, and Research

- Polk County cases continue to rise. The state trend is also increasing. Average daily cases in Polk County exceed 200 and 1300 for the state.
- More than 50 cases of the UK variant COVID-19 strain have been identified, though only a few thousand specimens are tested weekly. <https://www.cnn.com/2021/01/06/health/coronavirus-variant-us-cdc-cases/index.html>
- The COVID-19 UK variant (B.1.1.7) was identified in multiple states in the US. The strain is likely to more widespread than detected in the US as less than 0.03% of strains are sequenced. Another variant found in South Africa has mutations similar to the UK strain.

Key points regarding the UK variant:

- Spreads more quickly than previous strains
- Does not cause more severe illness
- Is detected by routine tests
- Therapeutic treatments may be less effective
- Vaccine effectiveness is not believed to be affected, at this time

<https://www.cdc.gov/coronavirus/2019-ncov/more/science-and-research/scientific-brief-emerging-variants.html>

- Flu activity remains low. <https://idph.iowa.gov/influenza/reports>
- FDA is not recommending any changes to second dose timing or allowance to interchange vaccines. <https://www.npr.org/sections/coronavirus-live-updates/2021/01/04/953431400/fda-warns-health-officials-not-to-mess-with-covid-19-vaccine-doses-schedule>
- FDA will weigh half dosing of the Moderna vaccine. <https://www.foxnews.com/health/fda-discussing-half-dosing-moderna-coronavirus-vaccines-operation-warp-speed-slaoui>

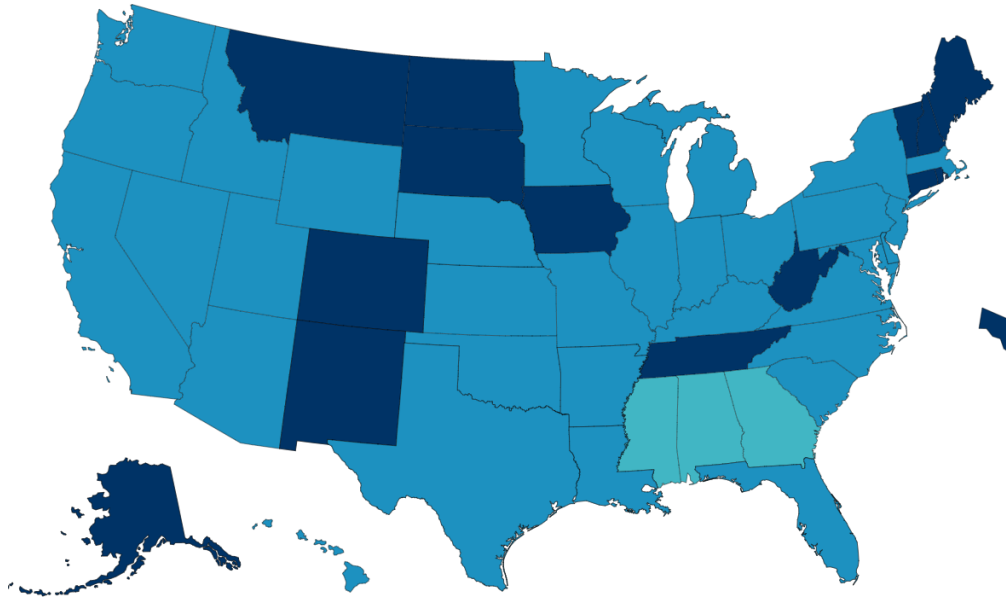
Vaccine

- Over 200 first responders in Des Moines receive the vaccine. <https://www.kcci.com/article/200-des-moines-iowa-first-responders-receiving-covid-19-vaccine/35130892>
- Efficacy and safety of the Moderna COVID-19 vaccine. Of 30,420 volunteers, efficacy was 94.1% with only 30 participants developing severe illness and one fatality. https://www.nejm.org/doi/full/10.1056/NEJMoa2035389?query=featured_coronavirus
- Safety and efficacy clinical trial data review of the Pfizer vaccine. https://www.nejm.org/doi/full/10.1056/NEJMoa2034577?query=featured_coronavirus

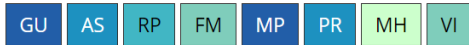


Vaccination Progress

Total Number of People Initiating Vaccination (1st Dose Received) Reported to the CDC by State/Territory and for Selected Federal Entities per 100,000



Territories



Federal Entities



Total Number of People Initiating Vaccination per 100,000



Central Iowa COVID19 Update



School Statistics – Polk County (will be updated on 1/11)

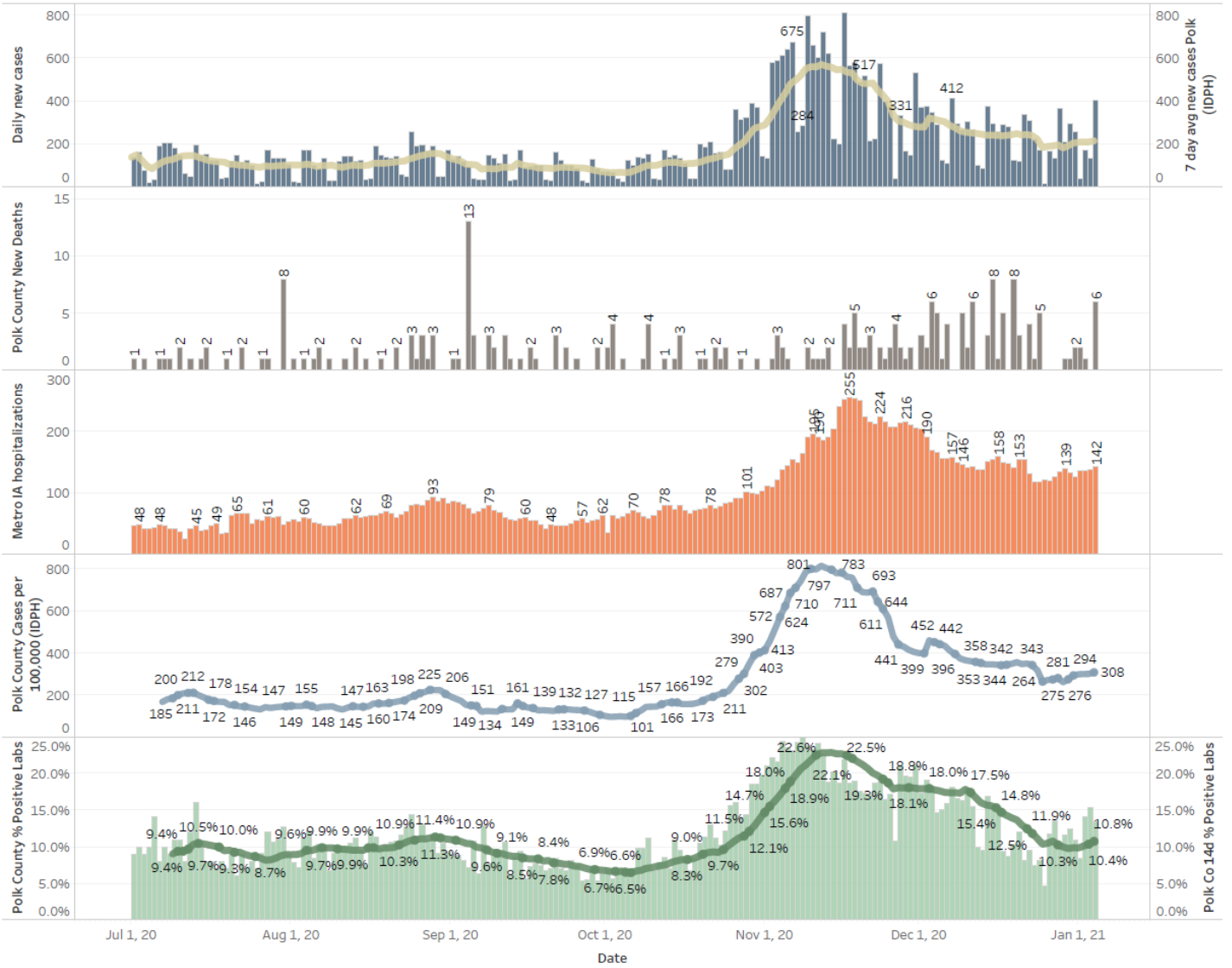
New Student/Staff Cases								
Week Ending	1-Nov	8-Nov	15-Nov	22-Nov	29-Nov	13-Dec	20-Dec	27-Dec
DMPS*	5	15	15	18	5	22	24	12
Ankeny	46	46	52	52	54	39	23	22
Waukee	67	118	108	75	53	40	19	20
WDM	25	51	99	42	10	24	17	5
Johnston	44	58	73	50	38	16	12	2
SE Polk	33	35	58	55	54	21	32	19
Urbandale	7	8	43	34	23	14	14	8
DCG		19	33	30	42	15	3	9
Bondurant		18	17	29	29	8	6	16
North Polk		8	10	10	8	2	3	4
Ballard				14	1	2	2	
Saydel		10	17	4	0	3	4	3
Total	227	331	525	413	317	206	159	120
Students/Staff in Quarantine								
Week Ending	1-Nov	8-Nov	15-Nov	22-Nov	29-Nov	13-Dec	20-Dec	27-Dec
DMPS*	N/A	N/A	N/A	N/A	N/A	N/A	N/A	N/A
Ankeny	225	225	370	370	273	172	107	87
Waukee	332	500	575	384	160	76	113	136
WDM	146	204	239	70	12	38	19	14
Johnston	586	667	527	318	286	73	78	73
SE Polk	186	211	307	380	401	126	121	129
Urbandale	39	97	180	223	179	49	32	34
DCG		80	159	216	82	69	46	41
Bondurant		148	160	167	138	97	55	62
North Polk		103	101	90	61	55	51	46
Ballard				77	40	34	16	
Saydel		109	88	65	46	30	33	24
Total	1514	2344	2706	2360	1678	819	671	646

*DMPS does not report quarantined students; DMPS also reports cases only daily

Central Iowa COVID19 Update



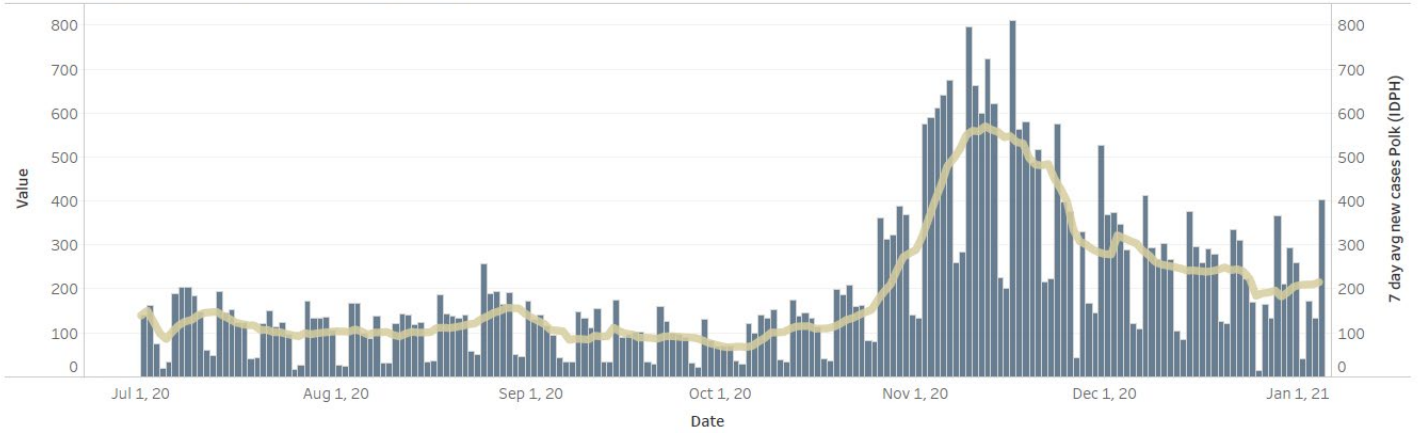
Polk County Activity View



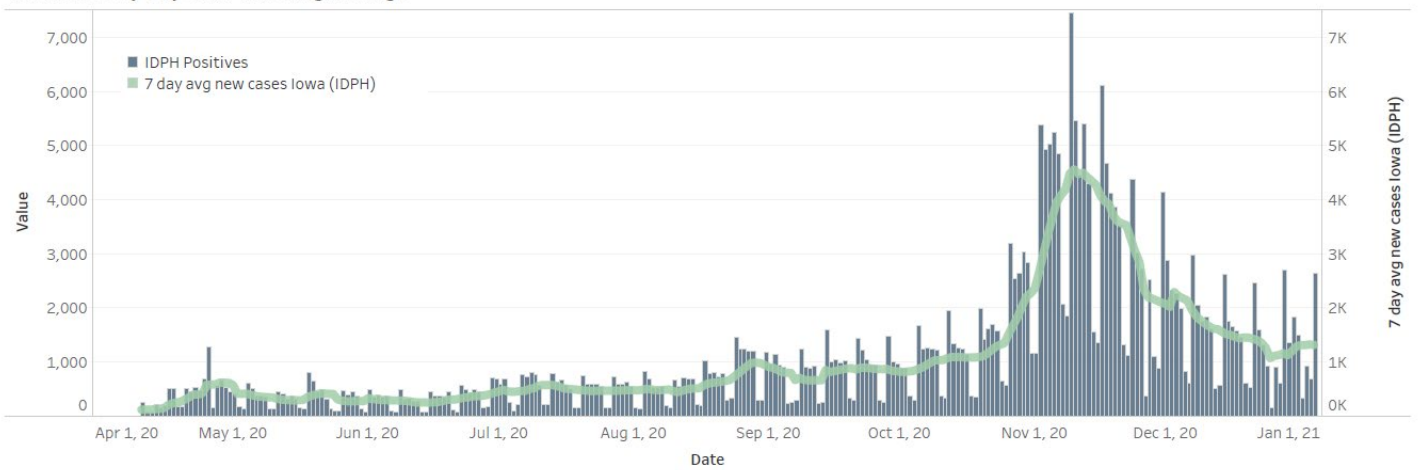
Central Iowa COVID19 Update



Polk County Cases by Day and 7d Moving Average



Iowa Cases by Day and 7d Moving Average



US and Border State Cases

