



Central Iowa COVID19 Update

Monday, November 23, 2020



Statistical Consulting

Dr. Meg Schaeffer





Quick Stats¹

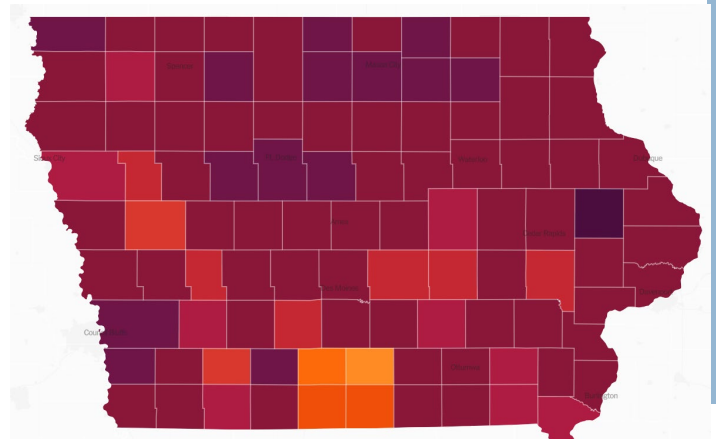
	Polk County	Iowa
7d Lab Test Positivity	16.3%	17.8%
14d Lab Test Positivity	19.9%	23.2%
Total cases per 100,000 the last 7d	642	723
Total cases per 100,000 the last 14d	1446	1680
Average daily cases the last 7d	450	3259
Average 7-day new cases per 100,000	92	103

¹All data are sourced from <https://coronavirus.iowa.gov/pages/case-counts> with previous days refreshed daily. When recent data are unavailable, data from <https://github.com/nytimes/covid-19-data> may be used. Population of Polk County used is 490,161. Population of Iowa used is 3.155 million. Averages and percent positivity are subject to change with retrospectively refreshed data.

Critical Points, Media, and Research

- Case counts at the county and state level are decreasing, though not a rate low enough to prevent a significant surge in January.
- Average daily deaths in Polk County are at three per day; 30 per day statewide. Deaths were expected to rise following the peak of new cases.
- Influenza activity has not been detected, though is expected towards the end of December.
- The American Academy of Pediatrics is reporting at 28% increase in pediatric cases in the past week. Children now comprise about 11% of cases nationally. <https://www.cnn.com/2020/11/23/health/us-coronavirus-monday/index.html>
- Oxford/Astra Zeneca vaccine has an estimated 70% efficacy. It is less expensive and easier to store than the Pfizer and Moderna vaccines. Application for use in the US has not yet been submitted. <https://www.bbc.com/news/health-55040635>
- COVID-19 surges are occurring in 45 states. <https://www.nytimes.com/live/2020/11/23/world/covid-19-coronavirus?action=click&module=Top%20Stories&pgtype=Homepage#its-not-just-the-midwest-the-us-outbreak-is-accelerating-all-over-the-map>

	TOTAL CASES	PER 100,000	DAILY AVG. IN LAST 7 DAYS	▼ PER 100,000	WEEKLY CASES PER CAPITA
					FEWER MORE
+ North Dakota MAP »	73,403	9,632	1,269.6	166.6	
+ Wyoming MAP »	29,431	5,085	810.7	140.1	
+ South Dakota MAP »	73,848	8,348	1,097.7	124.1	
+ New Mexico MAP »	84,148	4,013	2,527.9	120.6	
+ Minnesota MAP »	276,556	4,904	6,653.7	118	
+ Nebraska MAP »	114,061	5,896	2,271.4	117.4	
+ Iowa MAP »	213,236	6,759	3,621.4	114.8	
+ Montana MAP »	56,428	5,280	1,217.4	113.9	
+ Wisconsin MAP »	379,693	6,521	6,616.3	113.6	
+ Utah MAP »	179,420	5,596	3,338.3	104.1	



NYT US Activity



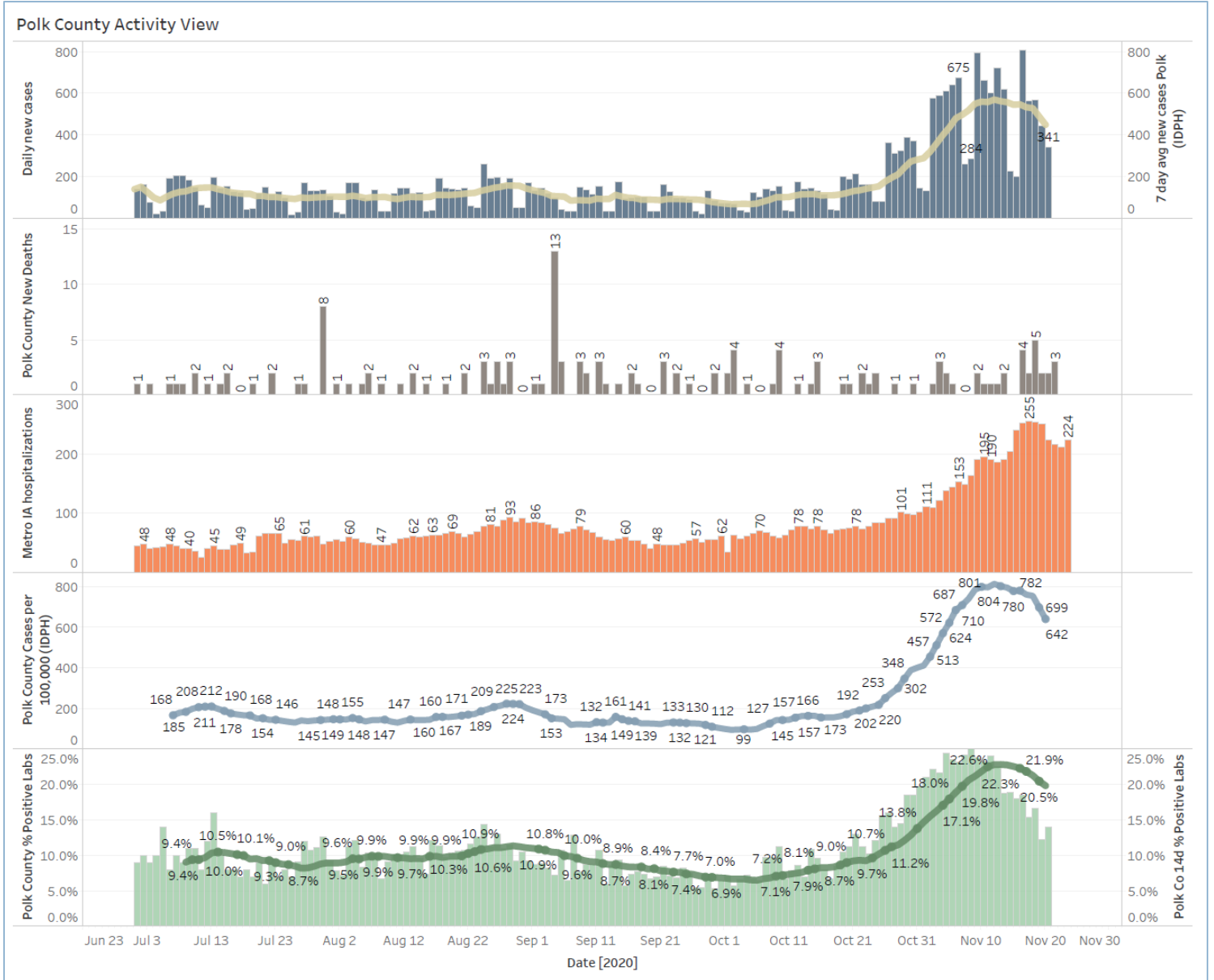
School Statistics – Polk County

New Student/Staff Cases				
Week Ending	1-Nov	8-Nov	15-Nov	22-Nov
DMPS*	5	15	15	18
Ankeny	46	46	52	52
Waukee	67	118	108	75
WDM	25	51	99	42
Johnston	44	58	73	50
SE Polk	33	35	58	55
Urbandale	7	8	43	34
DCG		19	33	30
Bondurant		18	17	29
North Polk		8	10	10
Ballard				14
Saydel		10	17	4
Total	227	331	525	413

Students/Staff in Quarantine				
Week Ending	1-Nov	8-Nov	15-Nov	22-Nov
DMPS*	N/A	N/A	N/A	N/A
Ankeny	225	225	370	370
Waukee	332	500	575	384
WDM	146	204	239	70
Johnston	586	667	527	318
SE Polk	186	211	307	380
Urbandale	39	97	180	223
DCG		80	159	216
Bondurant		148	160	167
North Polk		103	101	90
Ballard				77
Saydel		109	88	65
Total	1514	2344	2706	2360

*DMPS combines student and staff cases

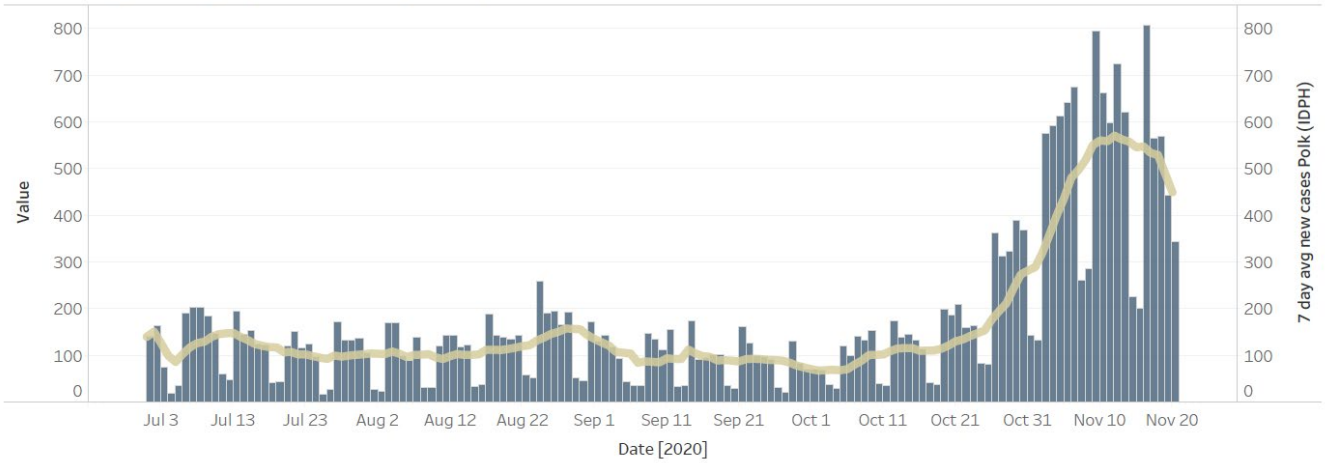
Central Iowa COVID19 Update



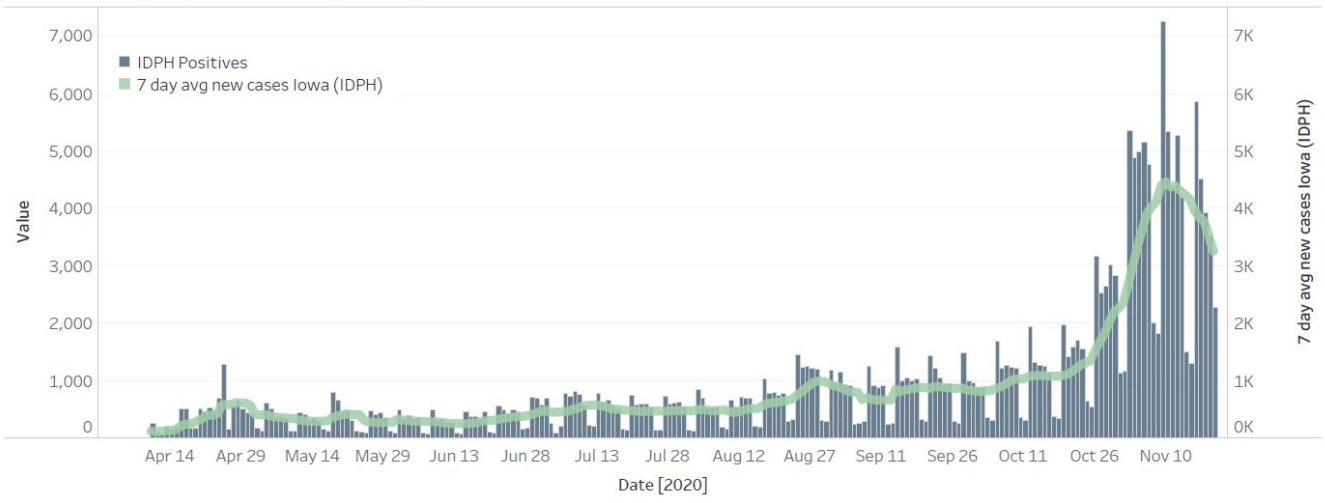
Central Iowa COVID19 Update



Polk County Cases by Day and 7d Moving Average



Iowa Cases by Day and 7d Moving Average



US and Border State Cases

