

# Central Iowa COVID19 Update

---

Wednesday, March 23, 2022



Statistical Consulting

Dr. Meg Schaeffer





## Quick Stats

	Polk County	Next Highest Target**	Iowa
Percent of population with at least 1 dose*	73.9%		67.5%
Percent of population with fully vaccinated*	67.2%	85%	61.4%
Average daily cases the last 7d	22		159
CDC County Transmission Level***	Low	Med	
Total cases per 100,000 the last 7d**	27	>200	26
Percent of staffed inpatient beds occupied by COVID-19 patients (7-day average)**	1.6%	10-14%	1.55%
New COVID-19 admissions per 100,000 population (7-day total)**	2.9	10-19.9	2.8

\*[Vaccine Information](#) | [Iowa COVID-19 Information](#)

All data are sourced from <https://coronavirus.iowa.gov/pages/case-counts> with previous days refreshed weekly. The population of Polk County used is 490,161. Population of Iowa used is 3.155 million. Averages and percent positivity are subject to change with retrospectively refreshed data.

\*\*[CDC COVID Data Tracker](#)

\*\*\*[COVID-19 County Check Tool](#) | [CDC](#)

## Critical Points, Media, and Research

Polk County and Iowa case counts seem to have stabilized at low rates. Hospitalizations also remain low. Multiple countries in Europe are experiencing substantial surges due to the Omicron subvariant BA.2. The same may occur in the U.S. though it may take a few more weeks for the subvariant to become dominant. Currently, the BA.2 variant accounts for 19% of Iowa cases with the U.S. reporting 35% of cases attributed to BA.2.

## News & Research

- [US Covid-19: As BA.2 subvariant grows, experts look to other countries to predict its impact here - CNN](#)
- [Moderna is planning to get COVID-19 vaccine authorized for children under 6 : NPR](#)
- [Effectiveness of 2-Dose BNT162b2 \(Pfizer BioNTech\) mRNA Vaccine in Preventing SARS-CoV-2 Infection Among Children Aged 5–11 Years and Adolescents Aged 12–15 Years — PROTECT Cohort, July 2021–February 2022](#)
- [Hospitalization of Infants and Children Aged 0–4 Years with Laboratory-Confirmed COVID-19 — COVID-NET, 14 States, March 2020–February 2022](#)
- [The Advisory Committee on Immunization Practices' Recommendation for Use of Moderna COVID-19 Vaccine in Adults Aged ≥18 Years and Considerations for Extended Intervals for Administration of Primary Series Doses of mRNA COVID-19 Vaccines — United States, February 2022](#)
- [Effectiveness of 2-Dose BNT162b2 \(Pfizer BioNTech\) mRNA Vaccine in Preventing SARS-CoV-2 Infection Among Children Aged 5–11 Years and Adolescents Aged 12–15 Years — PROTECT Cohort, July 2021–February 2022](#)
- [Hospitalization of Infants and Children Aged 0–4 Years with Laboratory-Confirmed COVID-19 — COVID-NET, 14 States, March 2020–February 2022](#)
- [The Advisory Committee on Immunization Practices' Recommendation for Use of Moderna COVID-19 Vaccine in Adults Aged ≥18 Years and Considerations for Extended Intervals for Administration of Primary Series Doses of mRNA COVID-19 Vaccines — United States, February 2022](#)



## Vaccine Progress

Polk Co Vaccination Rates CDC Covid Data Tracker Data (*)	At Least One Dose	Difference prev week	Fully Vaccinated	Difference prev week
<b>Total</b>	362,337	933	329,411	1,023
<b>% of Total Population</b>	73.9%	0.2%	67.2%	0.2%
<b>Population ≥ 5 Years of Age</b>	362,294	932	329,411	1,023
<b>% of Population ≥ 5 Years of Age</b>	79.5%	0.2%	72.3%	0.3%
<b>Population ≥ 12 Years of Age</b>	344,984	689	314,049	729
<b>% of Population ≥ 12 Years of Age</b>	84.4%	0.2%	76.8%	0.2%
<b>Population ≥ 18 Years of Age</b>	316,869	566	288,561	606
<b>% of Population ≥ 18 Years of Age</b>	85.8%	0.1%	78.2%	0.2%
<b>Population ≥ 65 Years of Age</b>	68,490	46	63,555	37
<b>% of Population ≥ 65 Years of Age</b>	95.0%	0.0%	95.0%	0.0%

(\*) CDC COVID Data Tracker Data: CDC data includes vaccine administration data from all sources, including IRIS\*, other state immunization registries, and federal entities (Bureau of Prisons, Veterans Health Administration, Department of Defense, and Federal Long-Term Care program). These doses may not have been reported to IRIS.

Link to Zip Code-Level Vaccination

Rates - <https://arcg.is/1nTry4>

### Polk Co People Fully Vaccinated with a Booster (\*)

	Data	Difference prev week
<b>Total</b>	172,604	1,680
% of Fully Vaccinated Population with a Booster Dose	52.4%	0.4%
Fully Vaccinated Population ≥ 18 Years of Age with a Booster Dose	172,572	1,679
% of Fully Vaccinated Population ≥ 18 Years of Age with a Booster Dose	55.0%	0.5%
Fully Vaccinated Population ≥ 50 Years of Age with a Booster Dose	166,143	1,382
% of Fully Vaccinated Population ≥ 50 Years of Age with a Booster Dose	57.6%	0.4%
Fully Vaccinated Population ≥ 65 Years of Age with a Booster Dose	51,014	204
% of Fully Vaccinated Population ≥ 65 Years of Age with a Booster Dose	80.3%	0.3%

(\*)The count of people who received a booster dose includes anyone who is fully vaccinated and has received another dose of COVID-19 vaccine since August 13, 2021. This includes people who received booster doses and people who received additional doses.

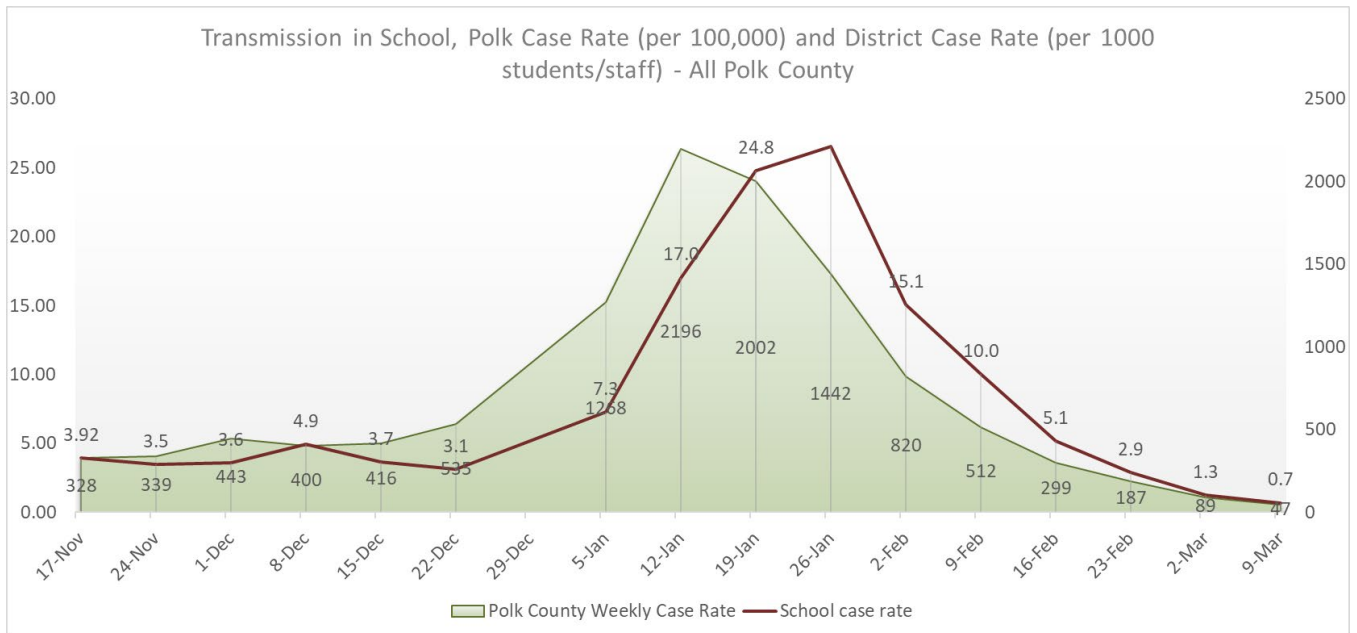
Central Iowa COVID19 Update



School Data – Reporting paused for spring break will resume on 3/30

		New Student/Staff Case Rates per 1000													
Week Ending	17-Nov	24-Nov	1-Dec	8-Dec	15-Dec	22-Dec	5-Jan	12-Jan	19-Jan	26-Jan	2-Feb	9-Feb	16-Feb	23-Feb	2-Mar
DMPs*	2.12	2.24	3.58	5.06	3.79	3.03	7.91	14.79	11.45	19.45	8.45	10.06	2.70	1.61	0.27
Ankeny	4.00	3.33	3.25	5.83	5.00	4.67	NA	18.42	32.08	40.58	24.83	18.33	6.42	3.42	1.92
Waukee	6.70	8.09	4.43	4.52	3.57	3.04	8.26	15.74	13.22	13.04	6.96	3.22	1.74	0.78	0.09
WDM	5.67	5.00	5.00	7.67	5.11	3.78	NA	19.67	31.67	33.44	26.11	11.56	9.11	3.33	3.33
Johnston	3.43	0.86	2.00	3.43	2.86	3.43	NA	8.29	24.57	36.29	8.71	10.29	2.14	2.86	1.71
SE Polk	2.29	3.14	4.14	5.29	2.86	1.71	1.86	13.29	14.71	11.57	10.29	4.86	2.14	1.00	0.29
Urbandale	3.25	4.25	3.00	3.75	1.75	2.75	11.00	29.00	46.00	31.50	20.00	12.00	11.75	7.00	1.25
Total	3.92	3.5	3.6	4.9	3.7	3.1	7.3	17.0	24.8	26.6	15.1	10.0	5.1	2.9	1.3

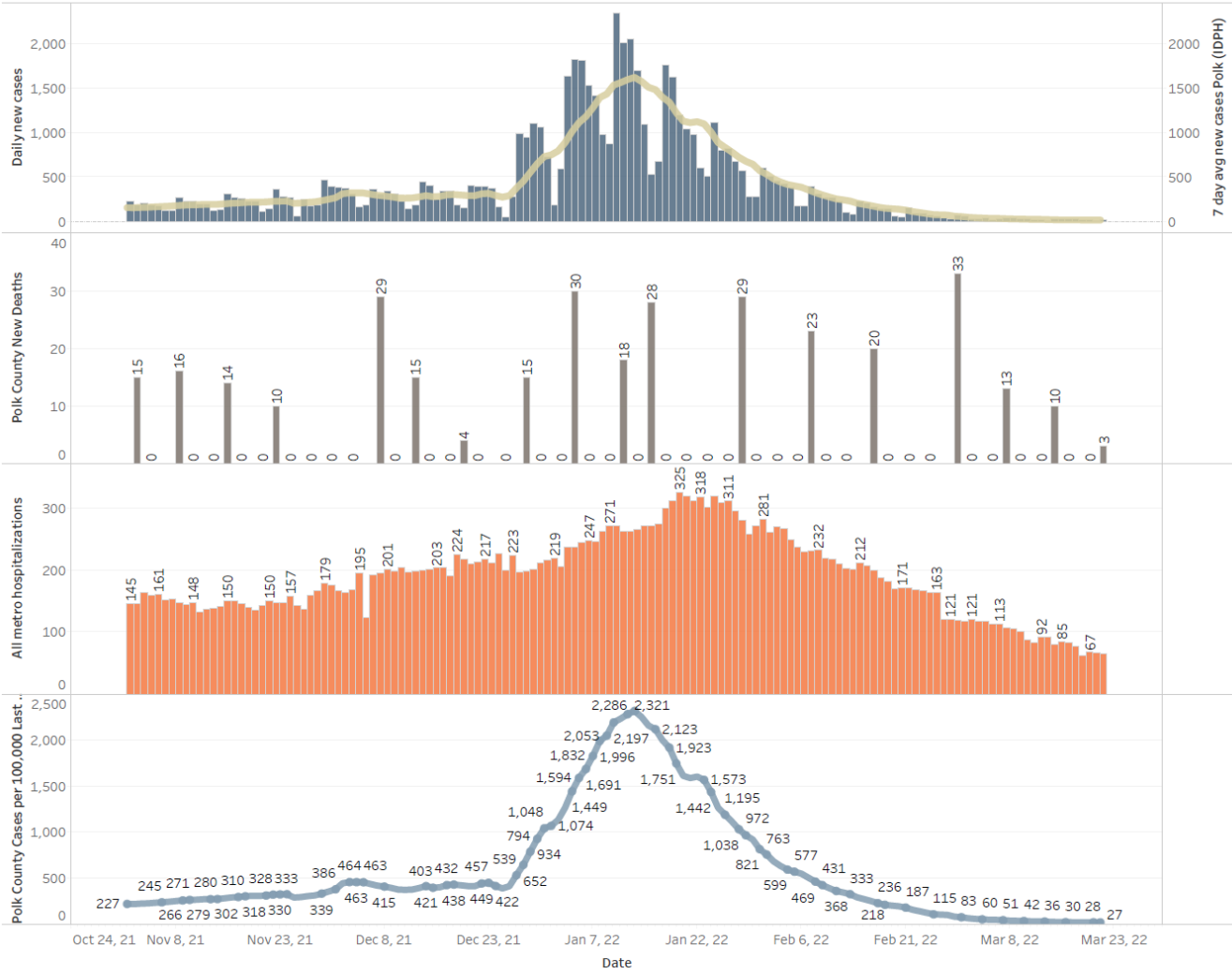
		New Student/Staff Cases													
Week Ending	17-Nov	24-Nov	1-Dec	8-Dec	15-Dec	22-Dec	5-Jan	12-Jan	19-Jan	26-Jan	2-Feb	9-Feb	16-Feb	23-Feb	23-Feb
DMPs*	70	74	118	167	125	100	261	488	378	642	279	332	89	53	9
Ankeny	48	40	39	70	60	56	NA	221	385	487	298	220	77	41	23
Waukee	90	105	63	65	48	36	120	210	186	150	80	37	20	9	1
WDM	51	45	45	69	46	34	NA	177	285	301	235	104	82	30	30
Johnston	24	6	14	24	20	24	NA	72	208	254	61	72	15	20	12
SE Polk	16	22	29	37	20	12	13	93	103	81	72	34	15	7	2
Urbandale	13	17	12	15	7	11	44	116	184	126	80	48	47	28	5
Total	312	309	320	447	326	273	438	1377	1729	2041	1105	847	345	188	82
Polk Weekly Cases	1428	1566	1727	2144	1825	1983	2532	5156	8502	9015	6752	3913	2385	1973	
Polk County Weekly Case Rate	291	320	352	438	372	405	517	1052	1735	1840	1378	799	487	403	



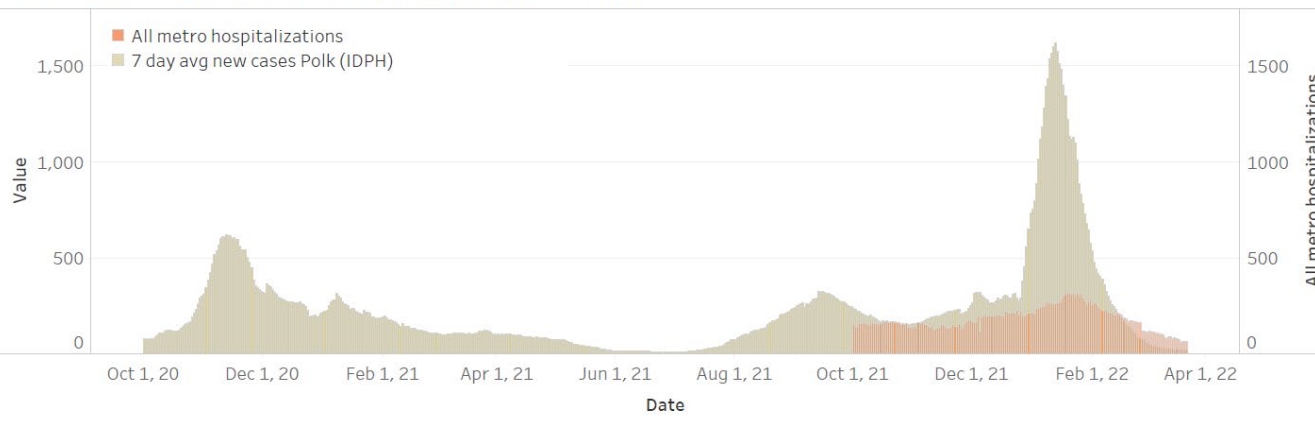
# Central Iowa COVID19 Update



Polk County Activity View - Since July 2021 through Present



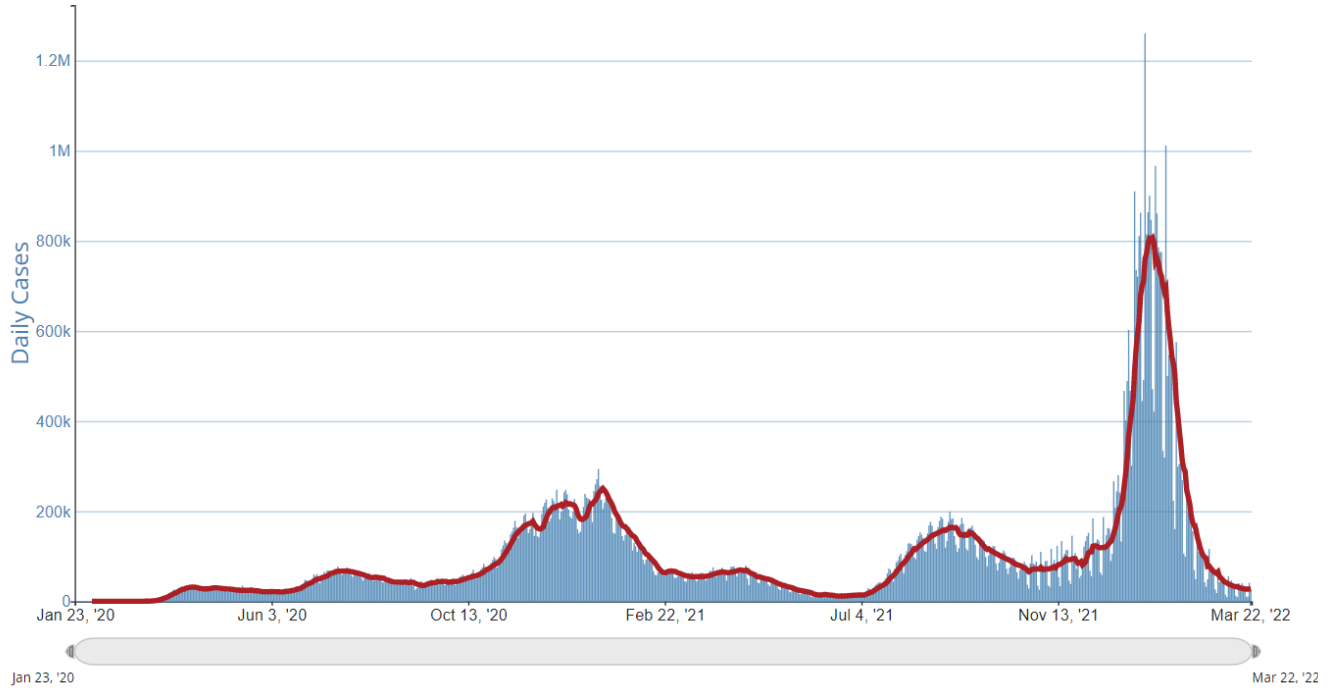
Polk County 7 day average cases and daily hospitalizations



# Central Iowa COVID19 Update



Daily Trends in Number of COVID-19 Cases in The United States Reported to CDC



	<b>CASES</b> DAILY AVG.	<b>PER</b> 100,000	<b>14-DAY</b> CHANGE	<b>HOSPITALIZED</b> DAILY AVG.	<b>PER</b> 100,000	<b>14-DAY</b> CHANGE	<b>DEATHS</b> DAILY AVG.	<b>PER</b> 100,000	<b>FULLY</b> <b>VACCINATED</b>
United States	29,288	9	-26%	20,984	6	-41%	1,009.4	0.3	65%
American Samoa	126	255	+329%	2	5	+78%	—	—	81%
Northern Mariana Islands ›	35	64	-52%	—	—	—	0.1	0.27	80%
Guam ›	52	31	-67%	—	—	—	0.6	0.34	82%
Kentucky ›	1,166	26	-8%	411	9	-47%	37	0.83	57%
Alaska ›	188	26	-24%	41	6	-35%	0.1	0.02	62%
Idaho ›	444	25	-57%	94	5	-44%	3.7	0.21	53%
Vermont ›	146	23	+7%	19	3	-29%	0.4	0.06	81%
Arkansas ›	623	21	+34%	242	8	-46%	22.3	0.74	54%
Colorado ›	1,151	20	+22%	205	4	-43%	8.6	0.15	70%
Rhode Island ›	169	16	+1%	54	5	-8%	1.3	0.12	81%