



# Central Iowa COVID19 Update

---

Thursday, December 24, 2020



Aperio

Statistical Consulting

Dr. Meg Schaeffer





## Quick Stats<sup>1</sup>

	Polk County	Iowa
7d Lab Test Positivity	12.9%	9.5%
14d Lab Test Positivity	10.6%	12.4%
Total cases per 100,000 the last 7d	290	282
Total cases per 100,000 the last 14d	682	675
Average daily cases the last 7d	220	1272
Average 7-day new cases per 100,000	45	40

<sup>1</sup>All data are sourced from <https://coronavirus.iowa.gov/pages/case-counts> with previous days refreshed daily. When recent data are unavailable, data from <https://github.com/nytimes/covid-19-data> may be used. Population of Polk County used is 490,161. Population of Iowa used is 3.155 million. Averages and percent positivity are subject to change with retrospectively refreshed data.

## Critical Points, Media, and Research

- Cases and hospitalizations are relatively static with very slight decreases over the past week.
- Flu activity remains minimal.
- A new COVID-19 variant was identified in the UK with the potential ability to spread much easier than strains circulating in other areas. However, laboratory and epidemiologic studies are underway to determine if this strain is truly more transmissible. Another variant in South Africa results in a higher viral load, which could cause more severe illness. These mutations should not affect the efficacy of any COVID-19 vaccine. <https://www.nytimes.com/2020/12/21/health/new-covid-strain-uk.html>
- The overall risk of SARS-CoV-2 infection among staff and students is thought to be low; children are often asymptomatic and their cases could be missed. The strong correlation between COVID-19 outbreaks in schools and regional incidence emphasizes the importance of controlling community transmission to protect schools and allow for safe re-openings. [https://www.thelancet.com/journals/laninf/article/PIIS1473-3099\(20\)30882-3/fulltext](https://www.thelancet.com/journals/laninf/article/PIIS1473-3099(20)30882-3/fulltext)
- Cloth masks alone, but not face shields, were effective at reducing respiratory droplet spread, Surgical masks or N95 respirators were much more efficient. Data support recommendations to wear masks and maintain physical distance from others to prevent SARS-CoV-2 spread. <https://www.tandfonline.com/doi/full/10.1080/02786826.2020.1846679>
- COVID-19 transmission outdoors is low, but not zero. <https://academic.oup.com/jid/advance-article/doi/10.1093/infdis/jiaa742/6009483>

## Vaccine

- ACIP recommendations include adults over 74 and frontline workers including first responders, teachers and other education workers, food and agriculture workers, correctional facility staff, postal workers, public transit workers, people in manufacturing and grocery stores. <https://www.statnews.com/2020/12/20/adults-over-75-frontline-essential-workers-should-be-in-second-covid-19-vaccine-priority-group-says-cdc-advisory-panel/>
- Interim clinical considerations for the COVID-19 vaccine (ACIP/CDC). Moderna is licensed for use in patients ≥18; Pfizer ≥16. <https://www.cdc.gov/vaccines/covid-19/info-by-product/clinical-considerations.html>
- Safety and efficacy clinical trial data review of the Pfizer vaccine. [https://www.nejm.org/doi/full/10.1056/NEJMoa2034577?query=featured\\_coronavirus](https://www.nejm.org/doi/full/10.1056/NEJMoa2034577?query=featured_coronavirus)



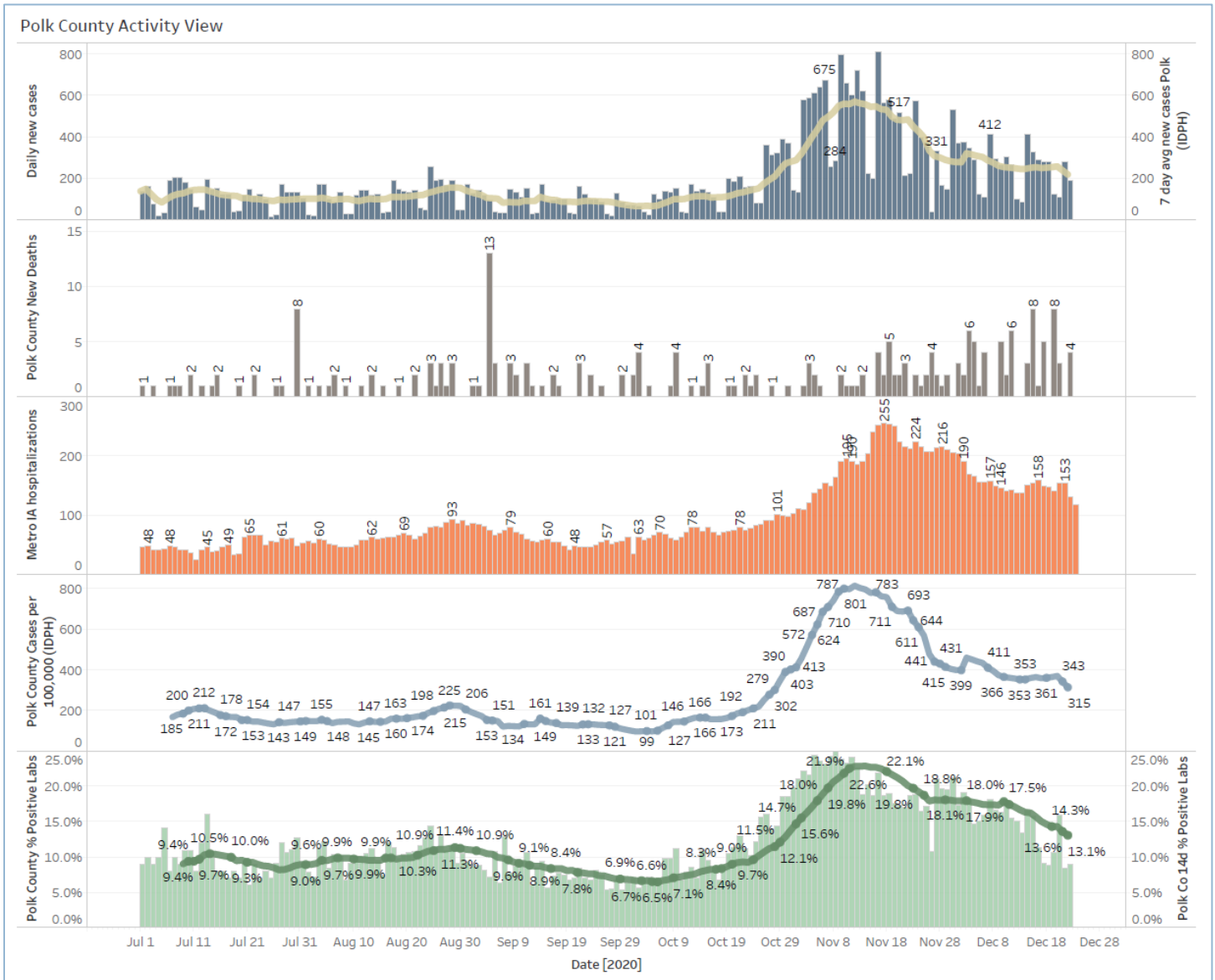
School Statistics – Polk County (data updated weekly on Mondays)

New Student/Staff Cases							
Week Ending	1-Nov	8-Nov	15-Nov	22-Nov	29-Nov	13-Dec	20-Dec
DMPS*	5	15	15	18	5	22	24
Ankeny	46	46	52	52	54	39	23
Waukee	67	118	108	75	53	40	19
WDM	25	51	99	42	10	24	17
Johnston	44	58	73	50	38	16	12
SE Polk	33	35	58	55	54	21	32
Urbandale	7	8	43	34	23	14	14
DCG		19	33	30	42	15	3
Bondurant		18	17	29	29	8	6
North Polk		8	10	10	8	2	3
Ballard				14	1	2	2
Saydel		10	17	4	0	3	4
Total	227	331	525	413	317	206	159

Students/Staff in Quarantine							
Week Ending	1-Nov	8-Nov	15-Nov	22-Nov	29-Nov	13-Dec	20-Dec
DMPS*	N/A	N/A	N/A	N/A	N/A	N/A	N/A
Ankeny	225	225	370	370	273	172	107
Waukee	332	500	575	384	160	76	113
WDM	146	204	239	70	12	38	19
Johnston	586	667	527	318	286	73	78
SE Polk	186	211	307	380	401	126	121
Urbandale	39	97	180	223	179	49	32
DCG		80	159	216	82	69	46
Bondurant		148	160	167	138	97	55
North Polk		103	101	90	61	55	51
Ballard				77	40	34	16
Saydel		109	88	65	46	30	33
Total	1514	2344	2706	2360	1678	819	671

\*DMPS does not report quarantined students; DMPS also reports cases only daily

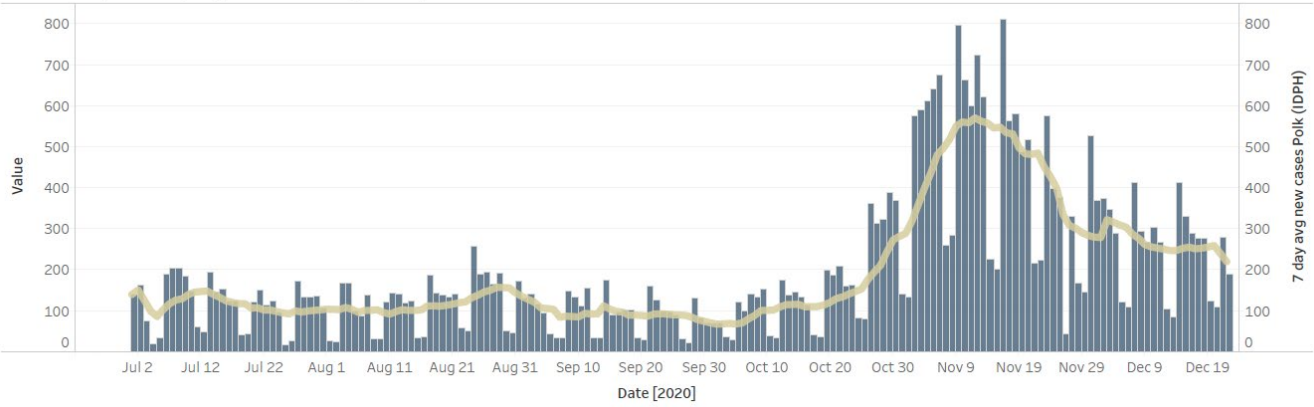
# Central Iowa COVID19 Update



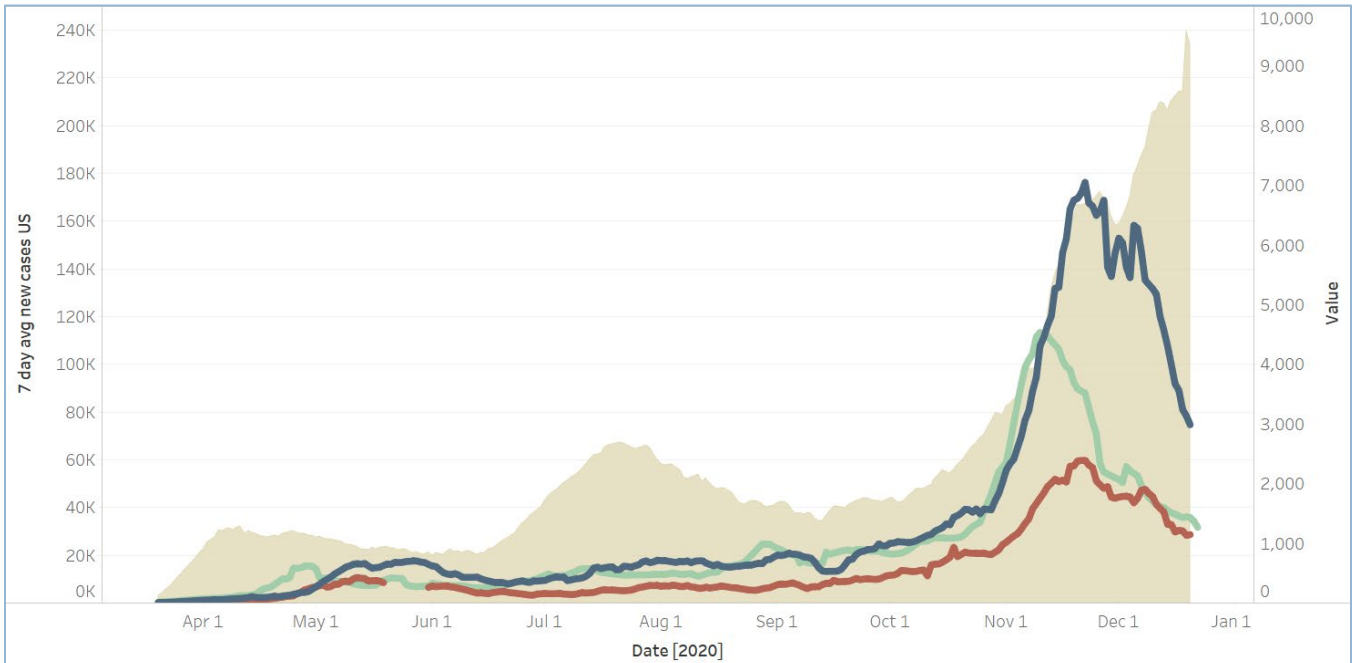
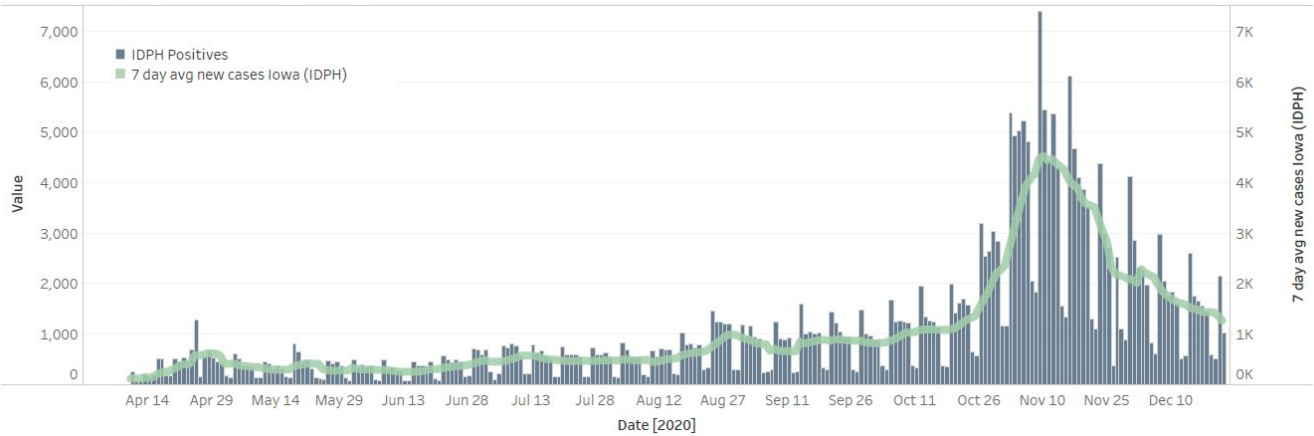
# Central Iowa COVID19 Update



Polk County Cases by Day and 7d Moving Average



Iowa Cases by Day and 7d Moving Average



The trends of 7 day avg new cases US, 7 day avg new cases Iowa (IDPH), MN 7 day moving avg and NE 7 day moving avg for Date. Color shows details about 7 day avg new cases US, 7 day avg new cases Iowa (IDPH), MN 7 day moving avg and NE 7 day moving avg. The view is filtered on Date, which ranges from 03/20 to 12/24.