

Central Iowa COVID19 Update

Wednesday, February 16, 2022



Aperio

Statistical Consulting

Dr. Meg Schaeffer





Quick Stats¹

	Polk County	Next Target ^{**}	Iowa
Percent of population with at least 1 dose*	73.4%		66.9%
Percent of population with fully vaccinated*	66.5%	85%	67%
7d Lab Test Positivity	16.7%	<10%	15-19.9%
Total cases per 100,000 the last 7d	218	<100	281
CDC County Transmission Level*	High	Substantial	
Average daily cases the last 7d	153		1268

*[Vaccine Information](#) | [Iowa COVID-19 Information](#)

All data are sourced from <https://coronavirus.iowa.gov/pages/case-counts> with previous days refreshed weekly. The population of Polk County used is 490,161. Population of Iowa used is 3.155 million. Averages and percent positivity are subject to change with retrospectively refreshed data.

**[CDC COVID Data Tracker](#)

***[COVID-19 County Check Tool](#) | [CDC](#)

Critical Points, Media, and Research

Case counts continue to decline substantially. Hospitalizations are averaging less than 100 inpatients per day for the first time since November. Polk County is experiencing about 150 new cases per day and the state still exceeds 1,000 per day.

News & Research

- <https://www.nytimes.com/live/2022/02/16/world/covid-19-tests-cases-vaccine/as-more-states-loosen-mask-policies-the-cdc-director-says-the-agency-is-working-on-relevant-guidance>
- <https://www.nytimes.com/live/2022/02/16/world/covid-19-tests-cases-vaccine/covid-patients-may-have-increased-risk-of-developing-mental-health-problems>
- [Geriatric risk factors for serious COVID-19 outcomes among older adults with cancer: a cohort study from the COVID-19 and Cancer Consortium - The Lancet Healthy Longevity](#)
- Two doses of BNT162b2 vaccine were associated with high short-term protection against SARS-CoV-2 infection; this protection waned considerably after 6 months. Infection-acquired immunity boosted with vaccination remained high more than 1 year after infection. [Protection against SARS-CoV-2 after Covid-19 Vaccination and Previous Infection | NEJM](#)
- Among patients who had recovered from Covid-19, the receipt of at least one dose of the BNT162b2 vaccine was associated with a significantly lower risk of recurrent infection.
- [Effectiveness of the BNT162b2 Vaccine after Recovery from Covid-19 | NEJM](#)
- Genomic Surveillance for SARS-CoV-2 Variants: Predominance of the Delta (B.1.617.2) and Omicron (B.1.1.529) Variants — United States, June 2021–January 2022. Link [here](#).
- Safety Monitoring of COVID-19 Vaccine Booster Doses Among Adults — United States, September 22, 2021–February 6, 2022. Link [here](#).
- Waning 2-Dose and 3-Dose Effectiveness of mRNA Vaccines Against COVID-19–Associated Emergency Department and Urgent Care Encounters and Hospitalizations Among Adults During Periods of Delta and Omicron Variant Predominance — VISION Network, 10 States, August 2021–January 2022. Link [here](#).



Vaccine Progress

Polk Co Vaccination Rates CDC Covid Data Tracker Data (*)	At Least One Dose	Difference prev week	Fully Vaccinated	Difference prev week
Total	359,598	878	325,741	1,233
% of Total Population	73.4%	0.2%	66.5%	0.3%
Population ≥ 5 Years of Age	359,561	878	325,741	1,233
% of Population ≥ 5 Years of Age	78.9%	0.2%	71.5%	0.3%
Population ≥ 12 Years of Age	342,943	597	311,582	684
% of Population ≥ 12 Years of Age	83.9%	0.2%	76.2%	0.1%
Population ≥ 18 Years of Age	315,154	487	286,527	579
% of Population ≥ 18 Years of Age	85.4%	0.2%	77.6%	0.1%
Population ≥ 65 Years of Age	68,367	38	63,407	40
% of Population ≥ 65 Years of Age	95.0%	0.0%	95.0%	0.0%

(*) CDC COVID Data Tracker Data: CDC data includes vaccine administration data from all sources, including IRIS*, other state immunization registries, and federal entities (Bureau of Prisons, Veterans Health Administration, Department of Defense, and Federal Long-Term Care program). These doses may not have been reported to IRIS.

Link to Zip Code-Level Vaccination

Rates - <https://arcg.is/1nTry4>

Polk Co People Fully Vaccinated with a Booster (*)

Data will be updated next week on 2/23

	Data	Difference prev week
Total	164,953	3,022
% of Fully Vaccinated Population with a Booster Dose	50.8%	0.7%
Fully Vaccinated Population ≥ 18 Years of Age with a Booster Dose	159,755	2,548
% of Fully Vaccinated Population ≥ 18 Years of Age with a Booster Dose	55.9%	0.8%
Fully Vaccinated Population ≥ 50 Years of Age with a Booster Dose	95,427	1,041
% of Fully Vaccinated Population ≥ 50 Years of Age with a Booster Dose	69.9%	0.6%
Fully Vaccinated Population ≥ 65 Years of Age with a Booster Dose	50,080	343
% of Fully Vaccinated Population ≥ 65 Years of Age with a Booster Dose	79.0%	0.4%

(*)The count of people who received a booster dose includes anyone who is fully vaccinated and has received another dose of COVID-19 vaccine since August 13, 2021. This includes people who received booster doses and people who received additional doses.

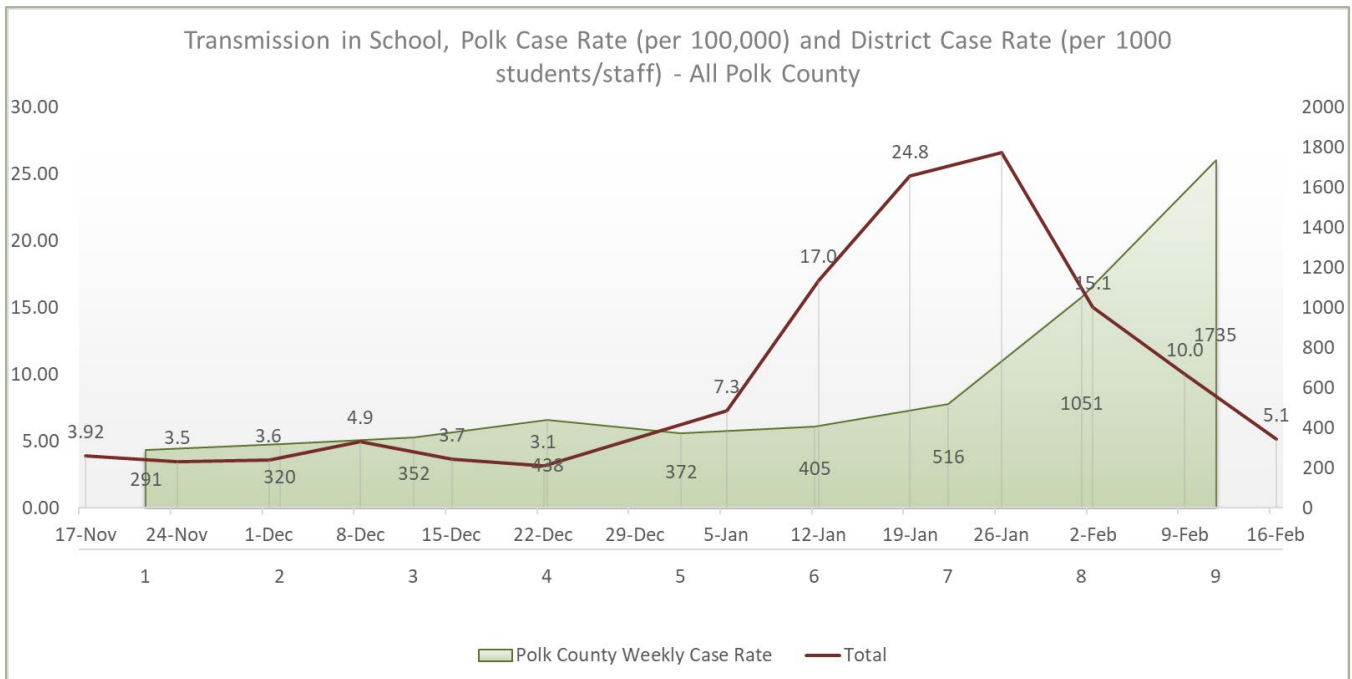
Central Iowa COVID19 Update



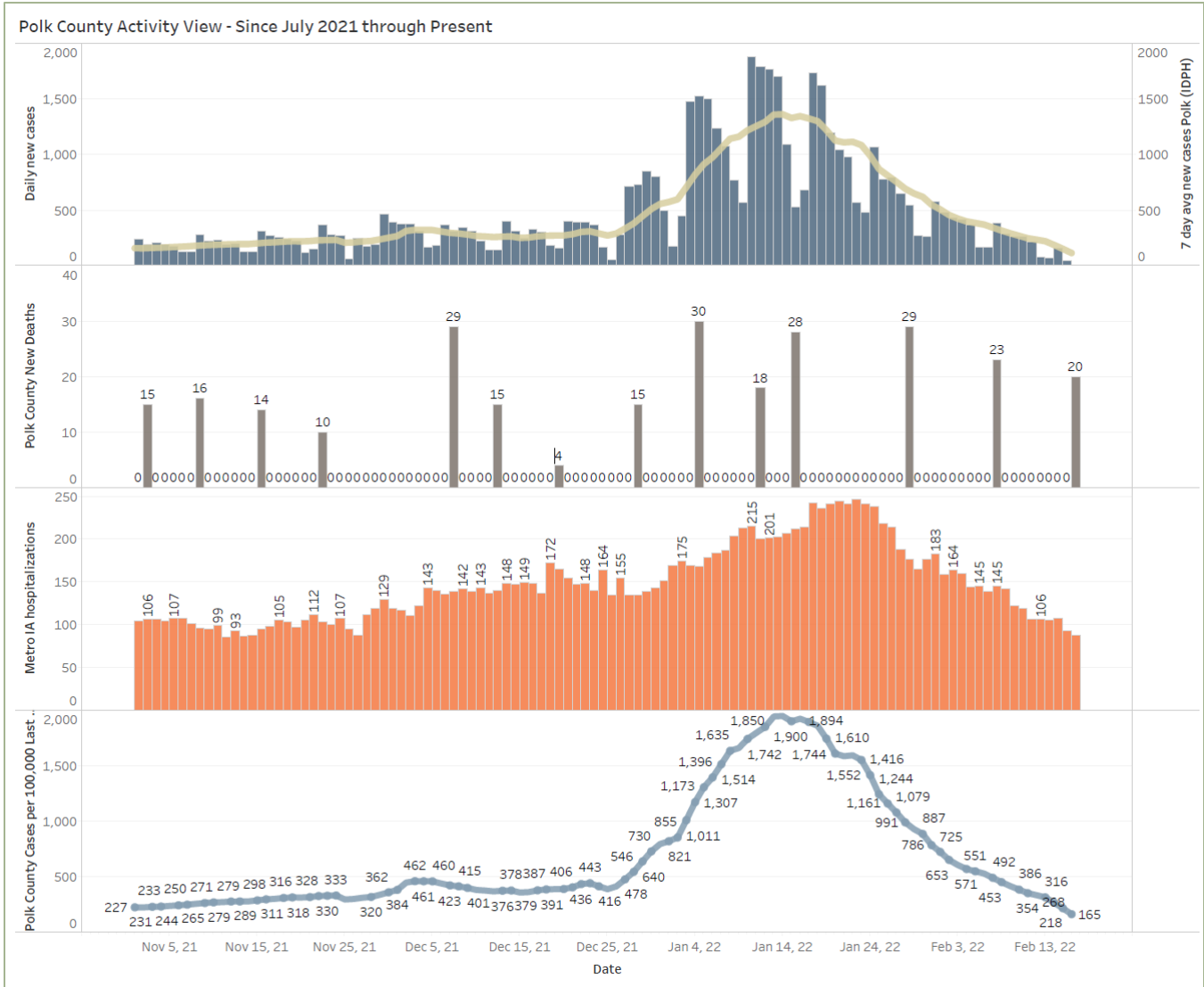
School Data

New Student/Staff Case Rates per 1000													
Week Ending	17-Nov	24-Nov	1-Dec	8-Dec	15-Dec	22-Dec	5-Jan	12-Jan	19-Jan	26-Jan	2-Feb	9-Feb	16-Feb
DMPs*	2.12	2.24	3.58	5.06	3.79	3.03	7.91	14.79	11.45	19.45	8.45	10.06	2.70
Ankeny	4.00	3.33	3.25	5.83	5.00	4.67	NA	18.42	32.08	40.58	24.83	18.33	6.42
Waukee	6.70	8.09	4.43	4.52	3.57	3.04	8.26	15.74	13.22	13.04	6.96	3.22	1.74
WDM	5.67	5.00	5.00	7.67	5.11	3.78	NA	19.67	31.67	33.44	26.11	11.56	9.11
Johnston	3.43	0.86	2.00	3.43	2.86	3.43	NA	8.29	24.57	36.29	8.71	10.29	2.14
SE Polk	2.29	3.14	4.14	5.29	2.86	1.71	1.86	13.29	14.71	11.57	10.29	4.86	2.14
Urbandale	3.25	4.25	3.00	3.75	1.75	2.75	11.00	29.00	46.00	31.50	20.00	12.00	11.75
Total	3.92	3.5	3.6	4.9	3.7	3.1	7.3	17.0	24.8	26.6	15.1	10.0	5.1

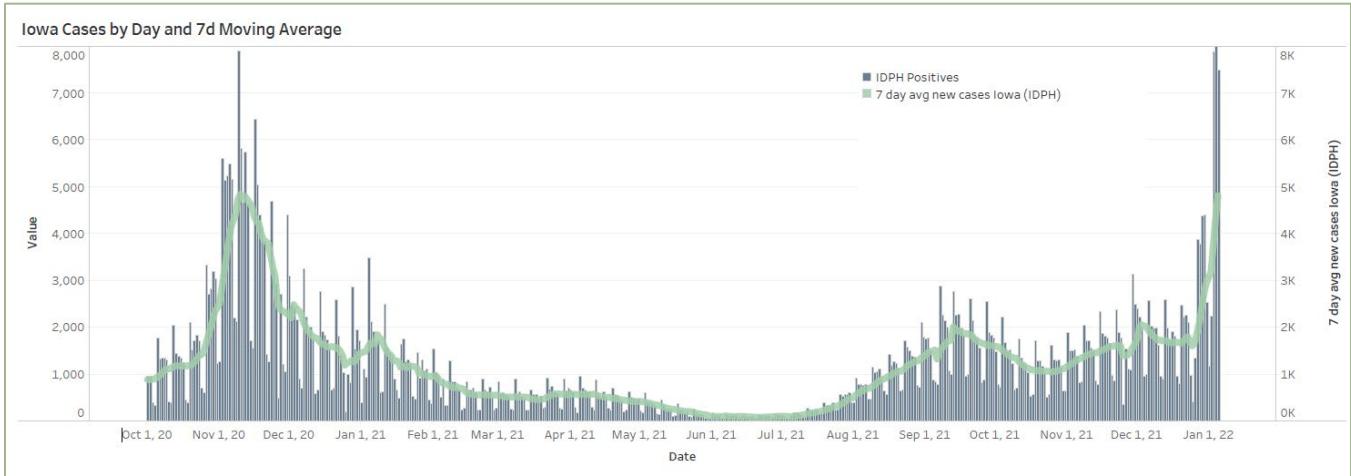
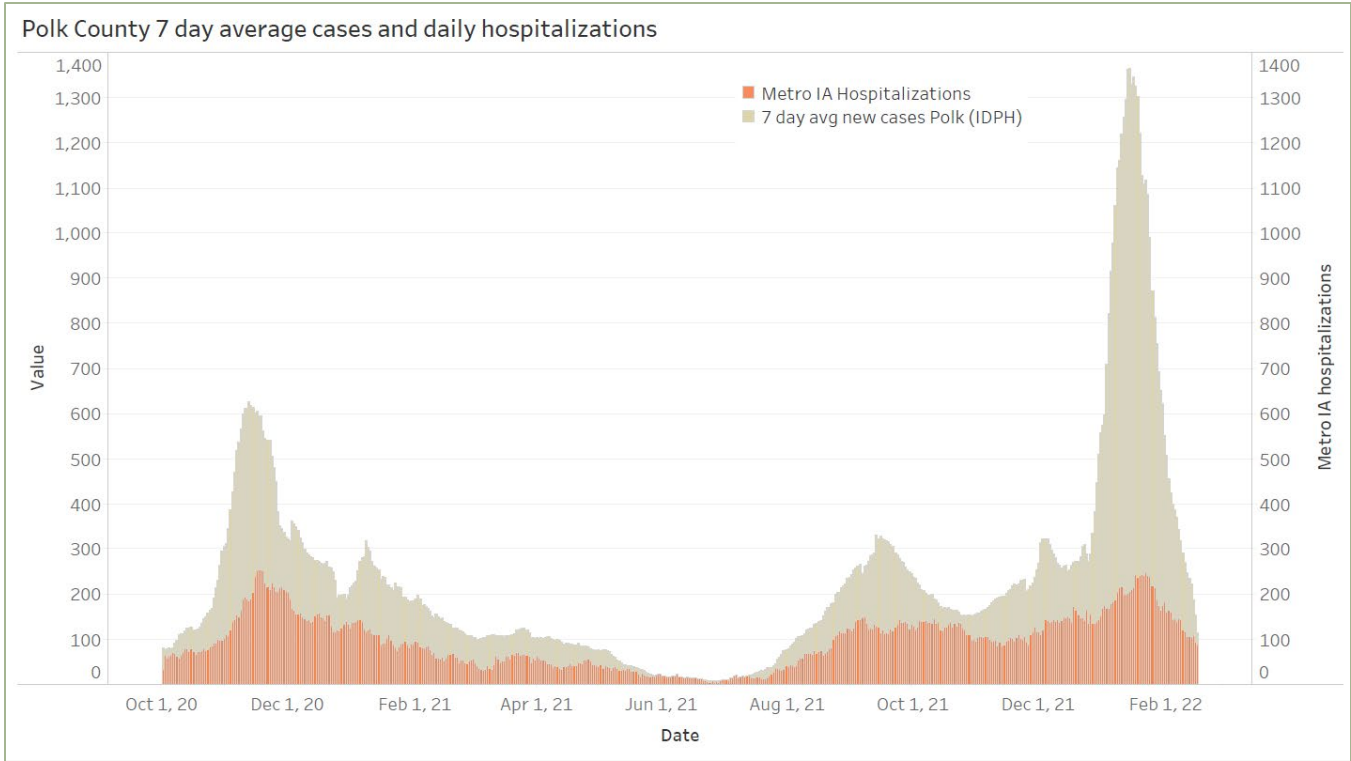
New Student/Staff Cases													
Week Ending	17-Nov	24-Nov	1-Dec	8-Dec	15-Dec	22-Dec	5-Jan	12-Jan	19-Jan	26-Jan	2-Feb	9-Feb	16-Feb
DMPs*	70	74	118	167	125	100	261	488	378	642	279	332	89
Ankeny	48	40	39	70	60	56	NA	221	385	487	298	220	77
Waukee	90	105	63	65	48	36	120	210	186	150	80	37	20
WDM	51	45	45	69	46	34	NA	177	285	301	235	104	82
Johnston	24	6	14	24	20	24	NA	72	208	254	61	72	15
SE Polk	16	22	29	37	20	12	13	93	103	81	72	34	15
Urbandale	13	17	12	15	7	11	44	116	184	126	80	48	47
Total	312	309	320	447	326	273	438	1377	1729	2041	1105	847	345
Polk Weekly Cases	1427	1566	1727	2144	1825	1983	2530	5151	8500	9015	6743	3906	
Polk County Weekly Case Rate	291	320	352	438	372	405	516	1051	1735	1840	1376	797	



Central Iowa COVID19 Update



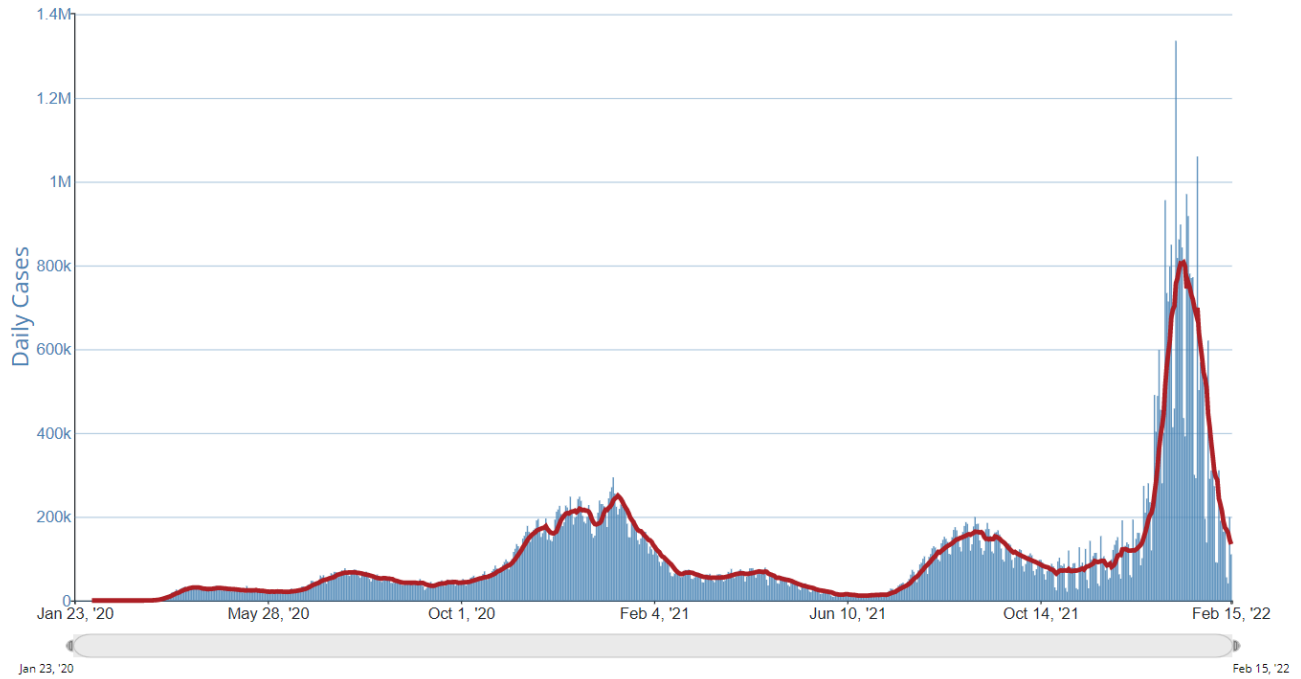
Central Iowa COVID19 Update



Central Iowa COVID19 Update



Daily Trends in Number of COVID-19 Cases in The United States Reported to CDC



	CASES DAILY AVG.	PER 100,000	14-DAY CHANGE	HOSPITALIZED DAILY AVG.	PER 100,000	14-DAY CHANGE	DEATHS DAILY AVG.	PER 100,000	FULLY VACCINATED
United States	140,204	42	-67%	85,086	26	-38%	2,327.9	0.7	64%
Northern Mariana Islands ›	169	314	+26%	—	—	—	0.3	0.53	79%
Guam ›	524	311	-18%	—	—	—	1.3	0.76	79%
Kentucky ›	5,158	115	-48%	2,070	46	-23%	39	0.87	56%
Alaska ›	732	100	-68%	111	15	-38%	2.6	0.35	60%
West Virginia ›	1,687	94	-51%	985	55	-22%	23.9	1.33	56%
Idaho ›	1,636	92	-36%	461	26	-23%	17.1	0.96	53%
Montana ›	769	72	-59%	287	27	-9%	5.4	0.51	56%
Maine ›	955	71	-8%	337	25	-20%	4.7	0.35	78%
New Hampshire ›	931	68	-43%	178	13	-49%	6.6	0.48	69%
North Dakota ›	515	68	-67%	114	15	-65%	3.7	0.49	54%