



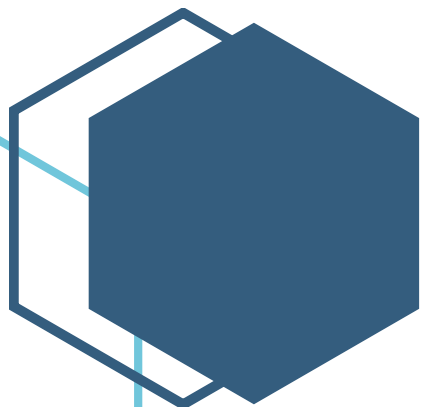
Central Iowa COVID19 Update

Monday, March 1, 2021



Statistical Consulting

Dr. Meg Schaeffer





Quick Stats¹

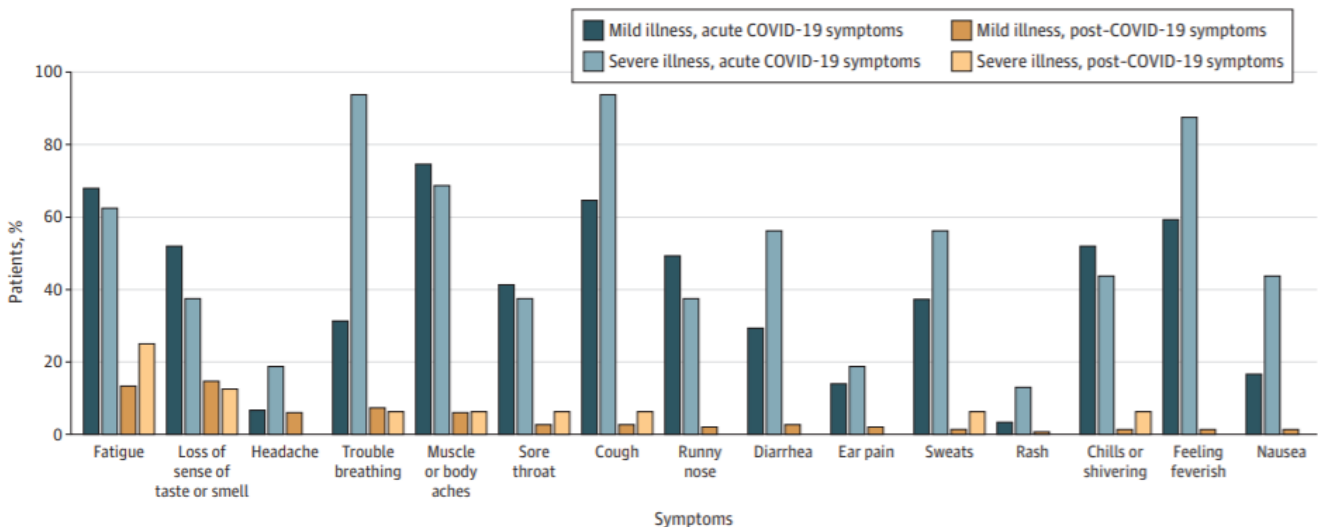
	Polk County	Iowa
Percent of population with 1 dose	7.6%	11.1%
Percent of population with 2 doses	5.1%	5.7%
7d Lab Test Positivity	6.3%	4.9%
14d Lab Test Positivity	6.1%	4.4%
Total cases per 100,000 the last 7d	152	118
Total cases per 100,000 the last 14d	330	239
Average daily cases the last 7d	107	530
Average 7-day new cases per 100,000	22	17

¹All data are sourced from <https://coronavirus.iowa.gov/pages/case-counts> with previous days refreshed daily. When recent data are unavailable, data from <https://github.com/nytimes/covid-19-data> may be used. Population of Polk County used is 490,161. Population of Iowa used is 3.155 million. Averages and percent positivity are subject to change with retrospectively refreshed data.

Critical Points, Media, and Research

- Vaccination progress metrics were added to the report this week. Percent of the population with one or two doses and anticipated date to achieve herd immunity are included.
- Statewide deceleration has stopped and cases may be slightly rising. Polk County deceleration is slowing and may stop decreasing over the next week.
- Hospitalizations remain around 55 per day in the metro; around 200 statewide.
- [Clusters of SARS-CoV-2 Infection Among Elementary School Educators and Students in One School District — Georgia, December 2020–January 2021 | MMWR \(cdc.gov\)](#)
- [Open Schools, Covid-19, and Child and Teacher Morbidity in Sweden | NEJM](#)
- [Sequelae in Adults at 6 Months After COVID-19 Infection | Infectious Diseases | JAMA Network Open | JAMA Network](#)

B Percentage of participants who reported COVID-19 symptoms during acute illness and at follow-up



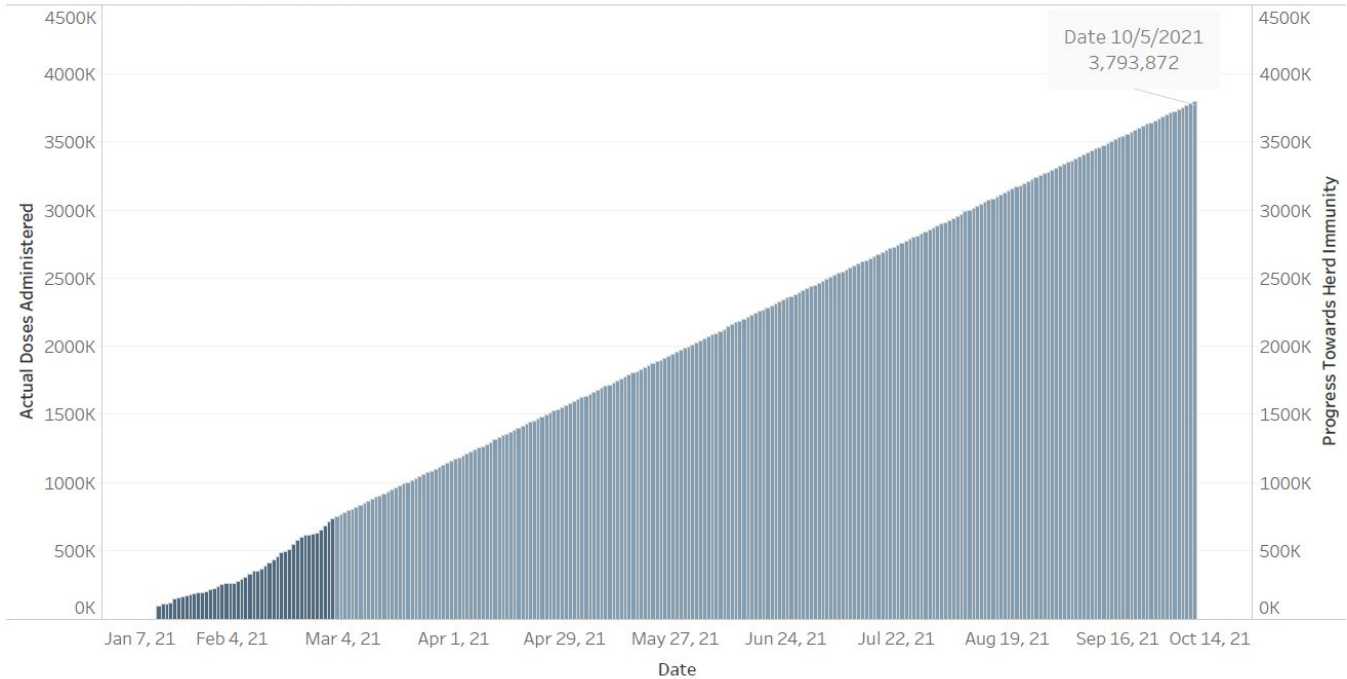
Vaccine

- [Biden Administration dampens expectations on availability of Johnson & Johnson vaccine](#)
- [Differences between the Jassen \(Johnson & Johnson\) vaccine and Moderna and Pfizer](#)
- [Covid-19 Vaccine: Answers to Key Questions](#)
- [Vaccination progress in the US](#)



Vaccination Progress – Polk County

Progress to Herd Immunity



Assumptions:

- 10% of the population or higher will have acquired immunity; 60% immune through vaccination for a total of 70% of the population immune
- Two vaccines available – Moderna and Pfizer
- Two doses required
- Similar distribution and administration pace

Vaccination Progress – Iowa

County	Series Initiated	Series Completed
Polk	53,182	34,857

Total Doses Administered

710,675

Individuals Initiating Vaccination (1st Dose)

349,505

Doses Administered to Iowa Residents

684,428

Individuals Completing Vaccination (2nd Dose)

180,585

Doses Administered by Manufacturer

Vaccine Manufacturer	Doses
Moderna	397,443
Pfizer	313,232
Total	710,675

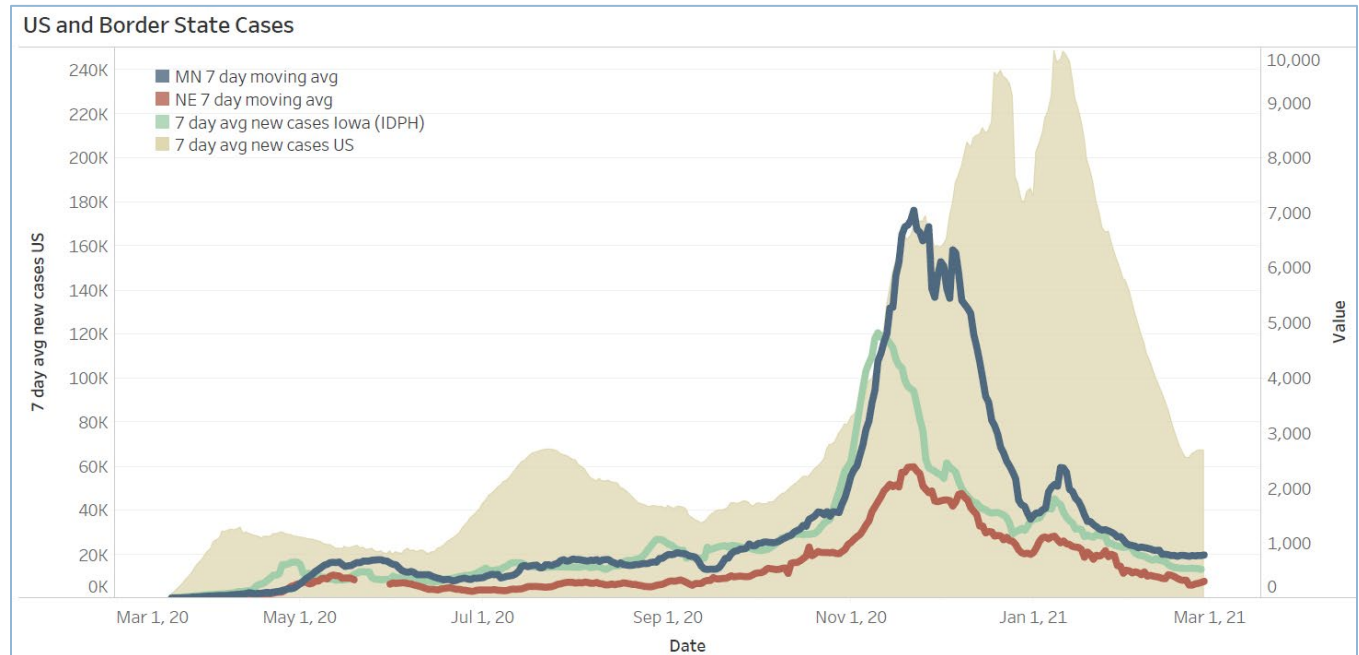
Central Iowa COVID19 Update



School Statistics – Polk County (Updated per week on Mondays)

Rate of Student/Staff Cases Per 1,000																
Week Ending	1-Nov	8-Nov	15-Nov	22-Nov	29-Nov	13-Dec	20-Dec	27-Dec	10-Jan	17-Jan	24-Jan	31-Jan	7-Feb	14-Feb	22-Feb	1-Mar
DMPS	0.2	4.0	0.5	0.5	0.2	0.7	0.7	0.4	4.0	1.9	2.6	0.2	2.5	0.8	1.3	0.6
Ankeny	3.8	3.8	4.3	4.3	4.5	3.3	1.9	1.8	5.9	3.8	3.1	2.8	2.3	1.6	2.0	1.0
Waukee	5.8	10.3	9.4	6.5	4.6	3.5	1.7	1.7	4.5	5.0	2.4	3.3	3.0	3.0	3.0	2.3
WDM	2.8	5.7	11.0	4.7	1.1	2.7	1.9	0.6	4.0	4.2	1.6	2.2	1.6	2.4	1.1	1.3
Johnston	6.3	8.3	10.4	7.1	5.4	2.3	1.7	0.3	4.6	3.4	2.1	3.3	2.3	1.6	3.3	3.7
SE Polk	4.7	5.0	8.3	7.9	7.7	3.0	4.6	2.7	3.4	5.0	3.9	2.9	3.4	3.0	2.1	2.4
Urbandale	1.8	2.0	10.8	8.5	5.8	3.5	3.5	2.0	6.0	3.0	2.5	2.8	3.3	4.0	2.3	2.5
DCG		6.0	10.4	9.5	13.3	4.7	0.9	2.8	2.2	2.2	2.5	1.3	1.3	1.9	2.5	1.9
Bondurant		8.3	7.9	13.4	13.4	3.7	2.8	7.4	0.0		0.9	12.5	19.0	11.6	11.6	0.9
North Polk		4.5	5.6	5.6	4.5	1.1	1.7	2.3	3.9	1.1	7.9	5.6	10.1	1.7	3.9	11.3
Ballard		0.0	0.0	8.2	0.6	1.2	1.2	0.0	0.0	4.1	1.2	1.2	6.4	6.4	5.8	2.3
Saydel		7.5	12.7	3.0	0.0	2.2	3.0	2.2	3.7	3.7	3.7	0.7	1.5	3.0	2.2	3.7

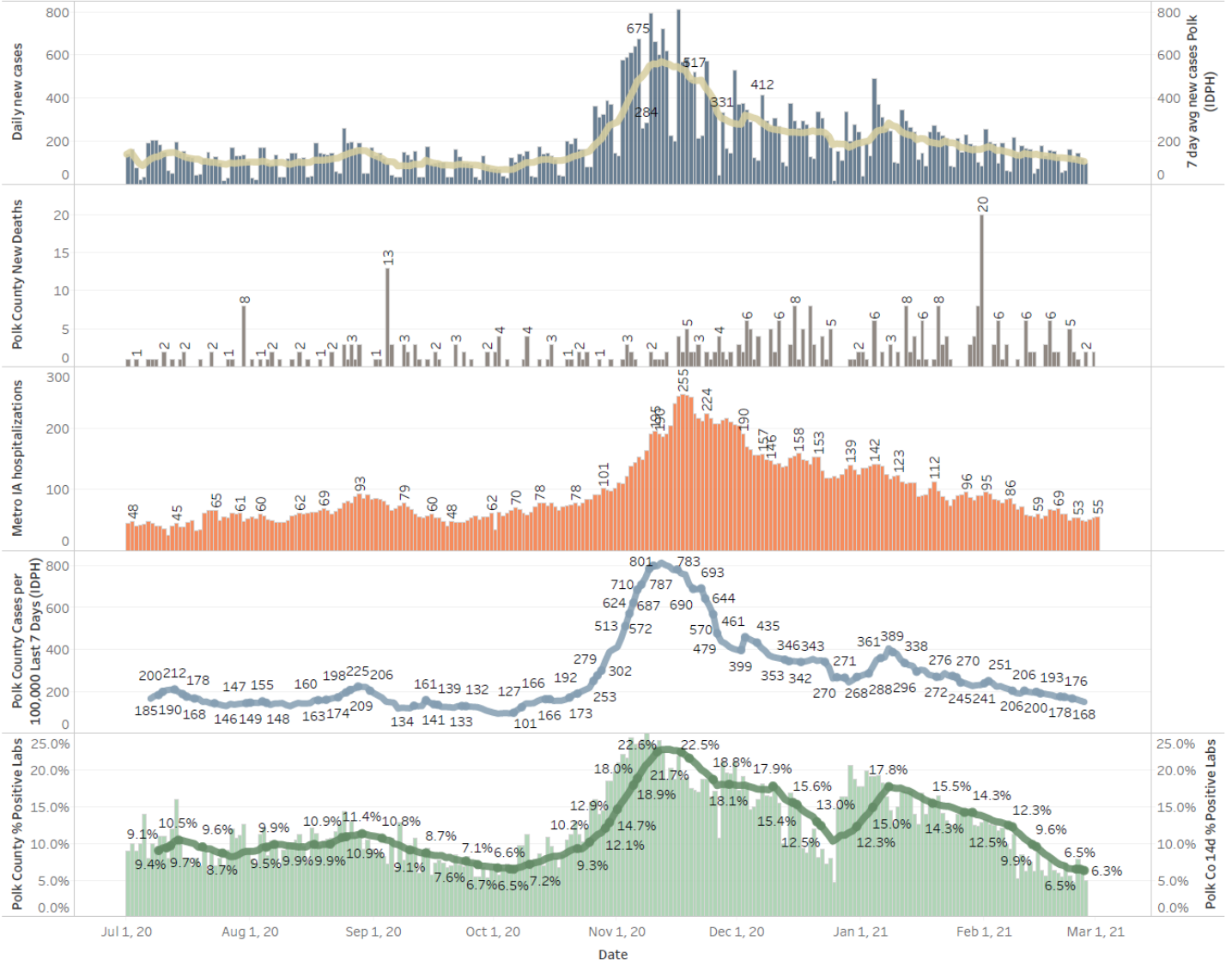
Students/Staff in Quarantine																	
Week Ending	1-Nov	8-Nov	15-Nov	22-Nov	29-Nov	13-Dec	20-Dec	27-Dec	10-Jan	17-Jan	24-Jan	31-Jan	7-Feb	14-Feb	22-Feb	1-Mar	
DMPS	N/A	N/A	N/A	N/A	N/A	N/A	N/A	N/A	N/A	N/A	N/A	N/A	N/A	220	198	235	223
Ankeny	225	225	370	370	273	172	107	87	132	116	125	138	178	106	88	75	
Waukee	332	500	575	384	160	76	113	136	156	195	95	108	127	128	94	102	
WDM	146	204	239	70	12	38	19	14	114	55	54	83	69	39	46	22	
Johnston	586	667	527	318	286	73	78	73	116	147	126	109	100	106	150	137	
SE Polk	186	211	307	380	401	126	121	129	89	125	129	96	84	86	92	105	
Urbandale	39	97	180	223	179	49	32	34	43	71	78	50	67	77	59	54	
DCG		80	159	216	82	69	46	41	33	43	42	44	45	59	79	44	
Bondurant		148	160	167	138	97	55	62	<6	N/A	28	68	86	69	69	11	
North Polk		103	101	90	61	55	51	46	30	19	35	57	52	50	39	39	
Ballard				77	40	34	16		28	12	25	20	18	40	30	9	
Saydel		109	88	65	46	30	33	24	39	26	27	26	33	19	23	18	
Total	1514	2344	2706	2360	1678	819	671	646	780	809	764	799	1079	977	1004	839	



Central Iowa COVID19 Update



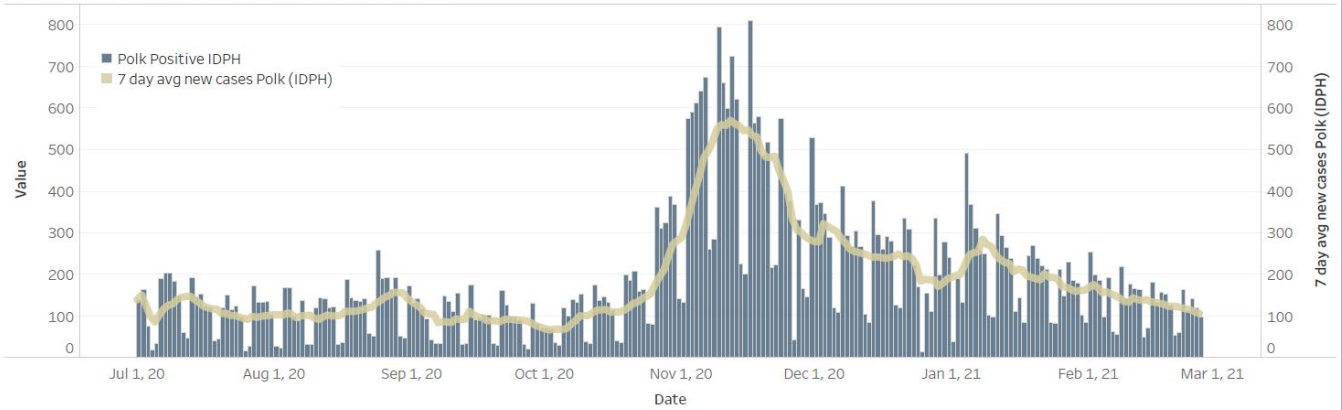
Polk County Activity View



Central Iowa COVID19 Update



Polk County Cases by Day and 7d Moving Average



Iowa Cases by Day and 7d Moving Average

