

Central Iowa COVID19 Update

Wednesday, March 16, 2022



Statistical Consulting

Dr. Meg Schaeffer





Quick Stats

	Polk County	Next Highest Target**	Iowa
Percent of population with at least 1 dose*	73.7%		67.5%
Percent of population with fully vaccinated*	67%	85%	61.4%
Average daily cases the last 7d	22		159
CDC County Transmission Level***	Low	Med	
Total cases per 100,000 the last 7d**	35	>200	31
Percent of staffed inpatient beds occupied by COVID-19 patients (7-day average)**	2.2%	10-14%	1.55%
New COVID-19 admissions per 100,000 population (7-day total)**	4.5	10-19.9	7

*[Vaccine Information](#) | [Iowa COVID-19 Information](#)

All data are sourced from <https://coronavirus.iowa.gov/pages/case-counts> with previous days refreshed weekly. The population of Polk County used is 490,161. Population of Iowa used is 3.155 million. Averages and percent positivity are subject to change with retrospectively refreshed data.

**[CDC COVID Data Tracker](#)

***[COVID-19 County Check Tool](#) | [CDC](#)

Critical Points, Media, and Research

Polk County and Iowa cases continue to decline and are approaching their lowest levels since the start of the pandemic. Cases may increase slightly in the next 2-3 after spring break travel. Metro hospitals remain at around 110 covid patients; infectious and no longer infectious.

News & Research

- [Disparities in COVID-19 Vaccination Coverage Between Urban and Rural Counties — United States, December 14, 2020–January 31, 2022](#)
- [SARS-CoV-2 Incidence in K–12 School Districts with Mask-Required Versus Mask-Optional Policies — Arkansas, August–October 2021](#)
- [COVID-19 Vaccine Provider Access and Vaccination Coverage Among Children Aged 5–11 years — United States, November 2021–January 2022](#)
- [China's Covid Lockdowns Set to Further Disrupt Global Supply Chains](#)
- [Covid Live Updates: Treasury Moves Housing Aid to New York and Other Big States That Have Run Out](#)
- [What rising Covid-19 infections in the UK and Europe could mean for the US](#)
- [Two years into the pandemic, COVID continues to weigh on Iowa's health care system](#)
- [How Iowa's second year of COVID compared to the first by graph](#)



Vaccine Progress – Data will be updated next week on 3/23

Polk Co Vaccination Rates CDC Covid Data Tracker Data (*)	At Least One Dose	Difference prev week	Fully Vaccinated	Difference prev week
Total	360,890	651	327,596	920
% of Total Population	73.6%	0.1%	66.8%	0.2%
Population ≥ 5 Years of Age	360,850	650	327,596	920
% of Population ≥ 5 Years of Age	79.2%	0.2%	71.9%	0.2%
Population ≥ 12 Years of Age	343,898	459	312,802	591
% of Population ≥ 12 Years of Age	84.1%	0.1%	76.5%	0.1%
Population ≥ 18 Years of Age	315,962	371	287,527	483
% of Population ≥ 18 Years of Age	85.6%	0.1%	77.9%	0.1%
Population ≥ 65 Years of Age	68,423	28	63,485	28
% of Population ≥ 65 Years of Age	95.0%	0.0%	95.0%	0.0%

(*) CDC COVID Data Tracker Data: CDC data includes vaccine administration data from all sources, including IRIS*, other state immunization registries, and federal entities (Bureau of Prisons, Veterans Health Administration, Department of Defense, and Federal Long-Term Care program). These doses may not have been reported to IRIS.

Link to Zip Code-Level Vaccination Rates - <https://arcg.is/1nTry4>

Polk Co People Fully Vaccinated with a Booster (*)

	Data	Difference prev week
Total	169,789	1,332
% of Fully Vaccinated Population with a Booster Dose	51.8%	0.2%
Fully Vaccinated Population ≥ 18 Years of Age with a Booster Dose	169,760	1,332
% of Fully Vaccinated Population ≥ 18 Years of Age with a Booster Dose	54.3%	0.4%
Fully Vaccinated Population ≥ 50 Years of Age with a Booster Dose	163,834	1,139
% of Fully Vaccinated Population ≥ 50 Years of Age with a Booster Dose	57.0%	0.3%
Fully Vaccinated Population ≥ 65 Years of Age with a Booster Dose	50,688	171
% of Fully Vaccinated Population ≥ 65 Years of Age with a Booster Dose	79.8%	0.2%

(*)The count of people who received a booster dose includes anyone who is fully vaccinated and has received another dose of COVID-19 vaccine since August 13, 2021. This includes people who received booster doses and people who received additional doses.

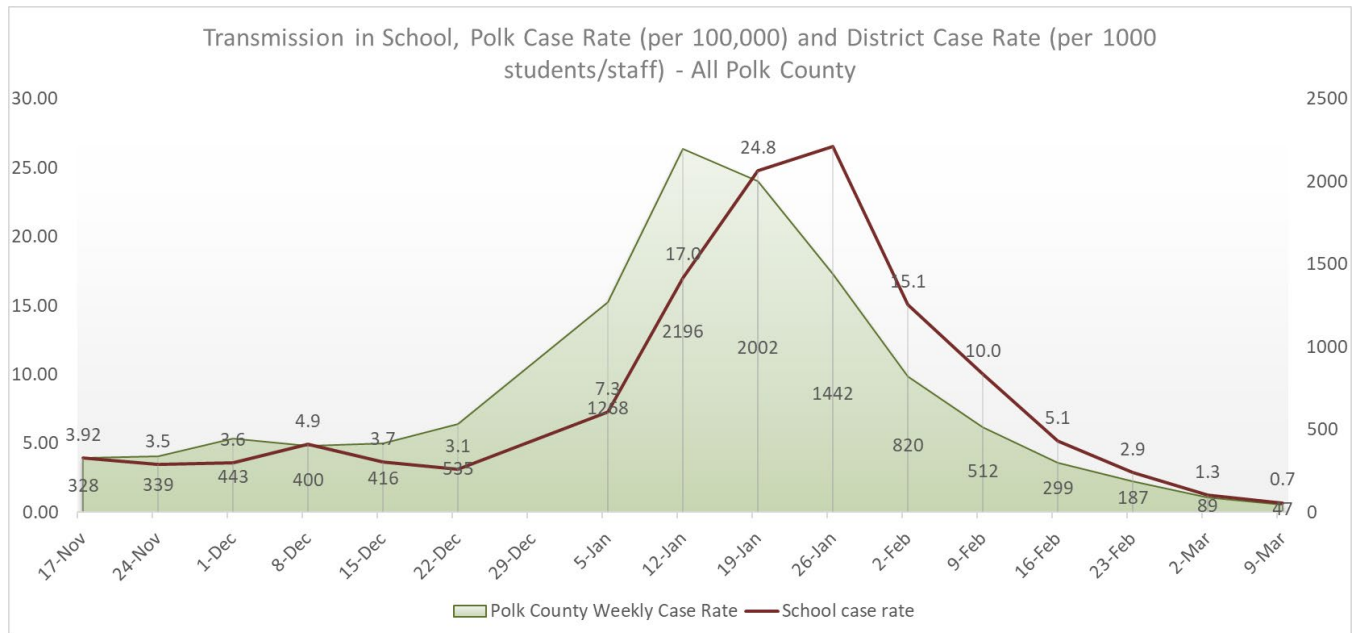
Central Iowa COVID19 Update



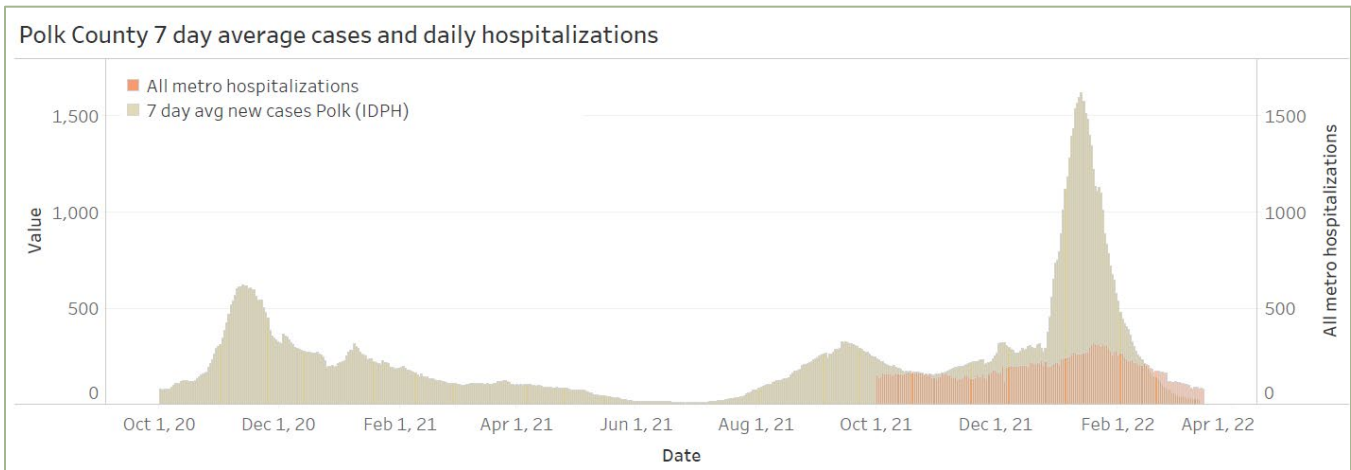
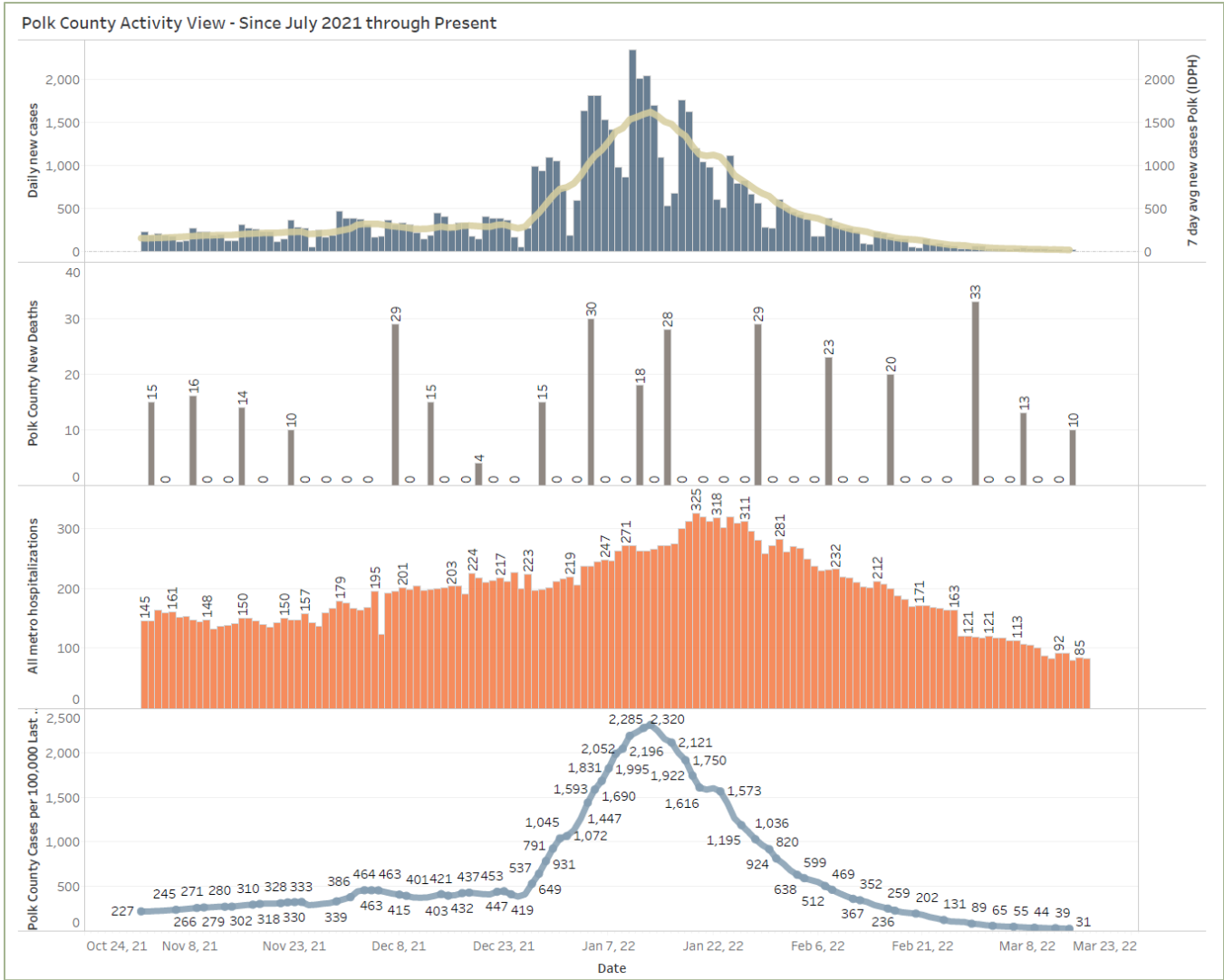
School Data – Reporting paused for spring break will resume on 3/23

	New Student/Staff Case Rates per 1000														
Week Ending	17-Nov	24-Nov	1-Dec	8-Dec	15-Dec	22-Dec	5-Jan	12-Jan	19-Jan	26-Jan	2-Feb	9-Feb	16-Feb	23-Feb	2-Mar
DMPs*	2.12	2.24	3.58	5.06	3.79	3.03	7.91	14.79	11.45	19.45	8.45	10.06	2.70	1.61	0.27
Ankeny	4.00	3.33	3.25	5.83	5.00	4.67	NA	18.42	32.08	40.58	24.83	18.33	6.42	3.42	1.92
Waukee	6.70	8.09	4.43	4.52	3.57	3.04	8.26	15.74	13.22	13.04	6.96	3.22	1.74	0.78	0.09
WDM	5.67	5.00	5.00	7.67	5.11	3.78	NA	19.67	31.67	33.44	26.11	11.56	9.11	3.33	3.33
Johnston	3.43	0.86	2.00	3.43	2.86	3.43	NA	8.29	24.57	36.29	8.71	10.29	2.14	2.86	1.71
SE Polk	2.29	3.14	4.14	5.29	2.86	1.71	1.86	13.29	14.71	11.57	10.29	4.86	2.14	1.00	0.29
Urbandale	3.25	4.25	3.00	3.75	1.75	2.75	11.00	29.00	46.00	31.50	20.00	12.00	11.75	7.00	1.25
Total	3.92	3.5	3.6	4.9	3.7	3.1	7.3	17.0	24.8	26.6	15.1	10.0	5.1	2.9	1.3

	New Student/Staff Cases														
Week Ending	17-Nov	24-Nov	1-Dec	8-Dec	15-Dec	22-Dec	5-Jan	12-Jan	19-Jan	26-Jan	2-Feb	9-Feb	16-Feb	23-Feb	23-Feb
DMPs*	70	74	118	167	125	100	261	488	378	642	279	332	89	53	9
Ankeny	48	40	39	70	60	56	NA	221	385	487	298	220	77	41	23
Waukee	90	105	63	65	48	36	120	210	186	150	80	37	20	9	1
WDM	51	45	45	69	46	34	NA	177	285	301	235	104	82	30	30
Johnston	24	6	14	24	20	24	NA	72	208	254	61	72	15	20	12
SE Polk	16	22	29	37	20	12	13	93	103	81	72	34	15	7	2
Urbandale	13	17	12	15	7	11	44	116	184	126	80	48	47	28	5
Total	312	309	320	447	326	273	438	1377	1729	2041	1105	847	345	188	82
Polk Weekly Cases	1428	1566	1727	2144	1825	1983	2532	5156	8502	9015	6752	3913	2385	1973	
Polk County Weekly Case Rate	291	320	352	438	372	405	517	1052	1735	1840	1378	799	487	403	



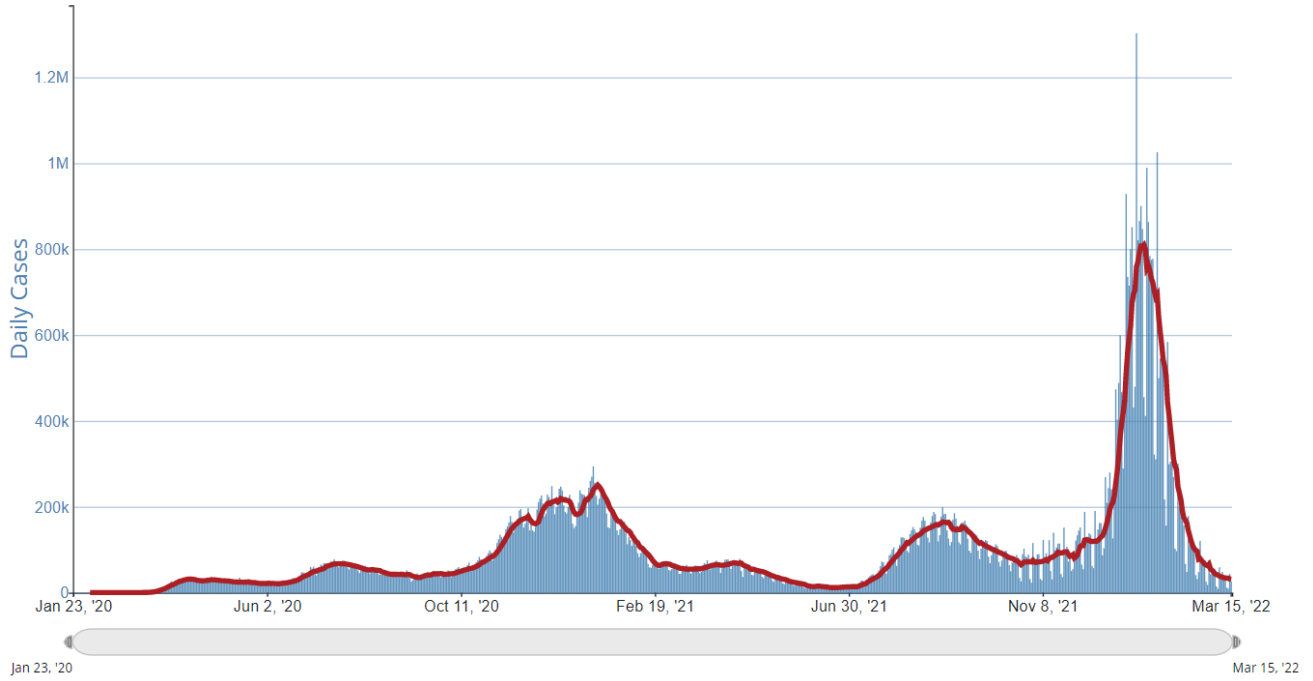
Central Iowa COVID19 Update



Central Iowa COVID19 Update



Daily Trends in Number of COVID-19 Cases in The United States Reported to CDC



	CASES DAILY AVG.	PER 100,000	14-DAY CHANGE	HOSPITALIZED DAILY AVG.	PER 100,000	14-DAY CHANGE	DEATHS DAILY AVG.	PER 100,000	FULLY VACCINATED
United States	32,094	10	-46%	26,436	8	-44%	1,226.1	0.37	65%
Northern Mariana Islands ›	44	81	-72%	—	—	—	0.1	0.27	80%
American Samoa	38	76	+817%	2	4	—	—	—	80%
Guam ›	99	59	-61%	—	—	—	0.7	0.42	81%
Idaho ›	706	40	-55%	112	6	-55%	4.7	0.26	53%
Kentucky ›	1,302	29	-22%	559	13	-49%	35.6	0.8	57%
Alaska ›	181	25	-47%	51	7	-40%	1.4	0.2	61%
Vermont ›	119	19	-29%	21	3	-41%	1.3	0.2	80%
U.S. Virgin Islands ›	18	17	+48%	3	2	-36%	0	—	53%
West Virginia ›	296	17	-59%	362	20	-46%	18.3	1.02	57%
Arkansas ›	487	16	-24%	317	10	-49%	30.1	1	54%