

# Central Iowa COVID19 Update

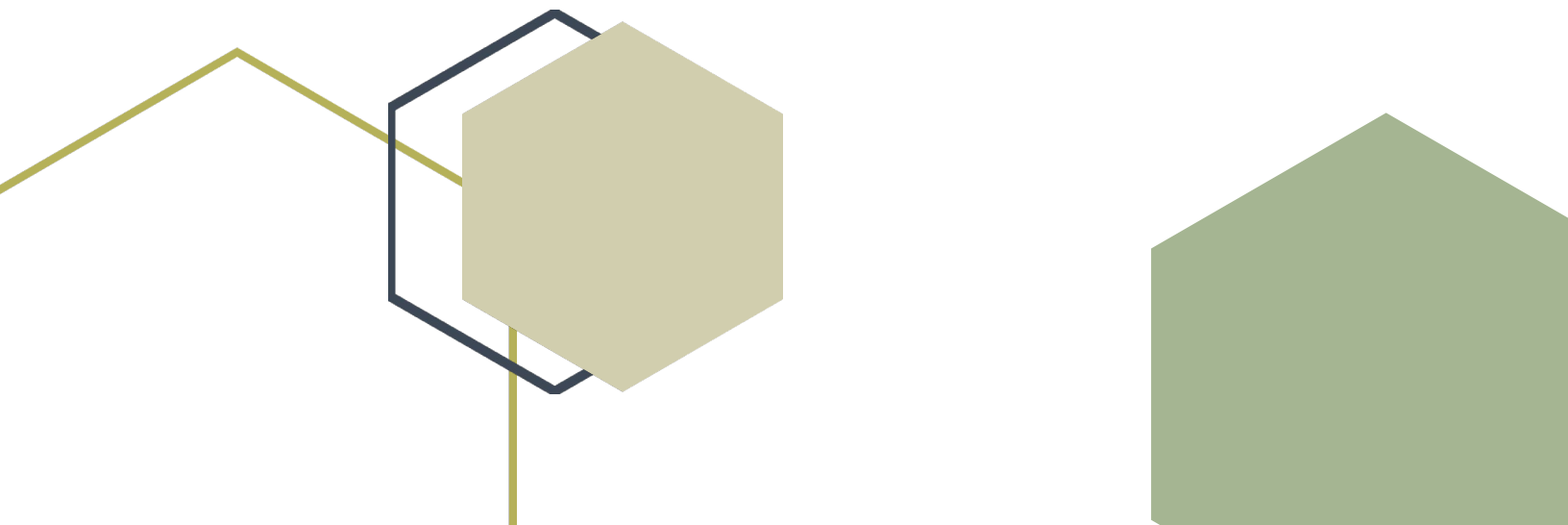
---

Wednesday, May 18, 2022



Statistical Consulting

Dr. Meg Schaeffer





## Quick Stats

	Polk County	Next Highest Target**	Iowa
<b>Community Metrics</b>			
Percent of population with at least 1 dose*	74.4%		68.1%
Percent of population with fully vaccinated*	67.9%	85%	62.1%
Average daily cases the last 7d	136		678
CDC County Level**	Low	Med	NA
Total cases per 100,000 the last 7d**	194	>200	150
<b>Healthcare Metrics</b>			
Percent of staffed inpatient beds occupied by COVID-19 patients (7-day average)**	2.4%	10-14%	1.79%
New COVID-19 admissions per 100,000 population (7-day total)**	3.8	10-19.9	6.6
CDC Community Transmission Level (For Healthcare use)	High	High	High
<p><b>Notes:</b> Community Metrics are <u>defined by CDC</u> and should be used to determine the impact of COVID-19 on communities and take action. Healthcare metrics are also <u>defined by CDC</u> and are used to assist healthcare providers in making planning and mitigation decisions.</p> <p>*<a href="#">Vaccine Information</a>   <a href="#">Iowa COVID-19 Information</a></p> <p>All data are sourced from <a href="#">Novel Coronavirus - COVID-19 Reporting (iowa.gov)</a> with previous days refreshed weekly. The population of Polk County used is 490,161. Population of Iowa used is 3.155 million. Averages and percent positivity are subject to change with retrospectively refreshed data.</p> <p>**<a href="#">CDC COVID Data Tracker</a></p>			

## Critical Points, Media, and Research

Transmission levels for Polk County and the state are “high” due to cases per 100,000 in the past 7 days exceeding 100. Hospitalizations and average cases, including cases in schools, are all rising. This increase is not as abrupt as previous surges, but is likely to continue rising. The surge has not reached all parts of the state and surrounding states are still rising as well.

### News & Research

- On May 17<sup>th</sup>, the White House [announced](#) U.S. households can order an additional 8 free at-home, rapid COVID-19 tests at [COVIDTests.gov](#). For more information, visit [here](#).
- On May 17<sup>th</sup>, the U.S. Food and Drug Administration (FDA) issued a [press release](#) announcing an amendment to the emergency use authorization (EUA) for the [Pfizer-BioNTech COVID-19 Vaccine](#), authorizing the use of a single booster dose for administration to individuals 5 through 11 years of age at least five months after completion of a primary series with the Pfizer-BioNTech COVID-19 Vaccine.
- The [COVID-19 State of Vaccine Confidence Insights Report](#) emphasizes major themes influencing COVID-19 vaccine hesitancy and uptake, categorized by their level and type of threat to vaccine confidence, degree of spread, and directionality.
- [Effectiveness of a COVID-19 Additional Primary or Booster Vaccine Dose in Preventing SARS-CoV-2 Infection Among Nursing Home Residents During Widespread Circulation of the Omicron Variant](#)
- [Clinical severity of COVID-19 in patients admitted to hospital during the omicron wave in South Africa: a retrospective observational study - The Lancet Global Health](#)
- [Neutralization of the SARS-CoV-2 Deltacron and BA.3 Variants | NEJM](#)
- [Early Release - SARS-CoV-2 Delta-Omicron Recombinant Viruses](#)
- [Early Release - Genomic Evidence of In-Flight SARS-CoV-2 Transmission, India to Australia, April 2021 - Volume 28, Number 7—July 2022 - Emerging Infectious Diseases journal - CDC](#)
- [Des Moines Mayor says city may require masks in buildings again](#)
- [COVID-19 numbers rise in Polk County, Iowa](#)



**Vaccine Progress – last updated 5/11**

Polk Co Vaccination Rates CDC Covid Data Tracker Data (*)	At Least One Dose	Difference prev week	Fully Vaccinated	Difference prev week
<b>Total</b>	364,580	270	332,487	303
<b>% of Total Population</b>	74%	0.1%	68%	0.0%
<b>Population ≥ 5 Years of Age</b>	364,530	269	332,487	303
<b>% of Population ≥ 5 Years of Age</b>	80%	0.1%	73%	0.0%
<b>Population ≥ 12 Years of Age</b>	346,728	213	316,459	257
<b>% of Population ≥ 12 Years of Age</b>	85%	0.0%	77%	0.0%
<b>Population ≥ 18 Years of Age</b>	318,395	180	290,724	232
<b>% of Population ≥ 18 Years of Age</b>	86%	0.0%	79%	0.1%
<b>Population ≥ 65 Years of Age</b>	68,825	41	64,356	91
<b>% of Population ≥ 65 Years of Age</b>	95%	0.0%	95%	0.0%

(\*) CDC COVID Data Tracker Data: CDC data includes vaccine administration data from all sources, including IRIS\*, other state immunization registries, and federal entities (Bureau of Prisons, Veterans Health Administration, Department of Defense, and Federal Long-Term Care program). These doses may not have been reported to IRIS.

Link to Zip Code-Level Vaccination

Rates - <https://arcg.is/1nTry4>

Polk Co People Fully Vaccinated with a Booster (*)	Data	Difference prev week
<b>Total</b>	177,394	475
% of Fully Vaccinated Population with a Booster Dose	53%	0.1%
Fully Vaccinated Population ≥ 18 Years of Age with a Booster Dose	177,351	475
% of Fully Vaccinated Population ≥ 18 Years of Age with a Booster Dose	56%	0.1%
Fully Vaccinated Population ≥ 50 Years of Age with a Booster Dose	170,414	424
% of Fully Vaccinated Population ≥ 50 Years of Age with a Booster Dose	59%	0.1%
Fully Vaccinated Population ≥ 65 Years of Age with a Booster Dose	52,188	127
% of Fully Vaccinated Population ≥ 65 Years of Age with a Booster Dose	81%	0.1%

(\*)The count of people who received a booster dose includes anyone who is fully vaccinated and has received another dose of COVID-19 vaccine since August 13, 2021. This includes people who received booster doses and people who received additional doses.

# Central Iowa COVID19 Update

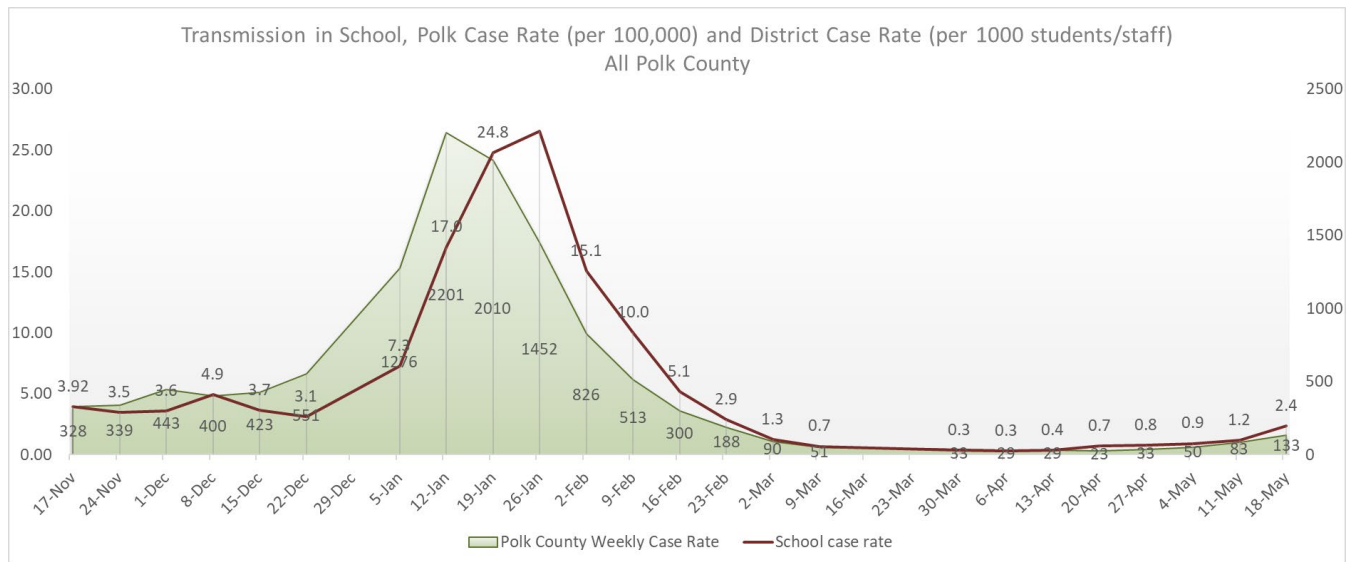


## School Data

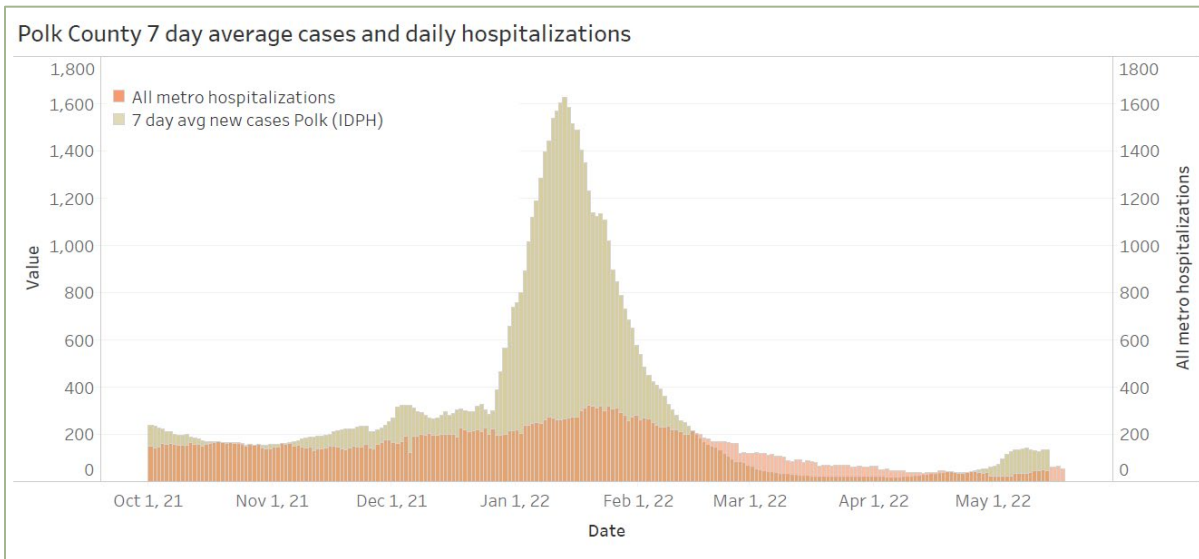
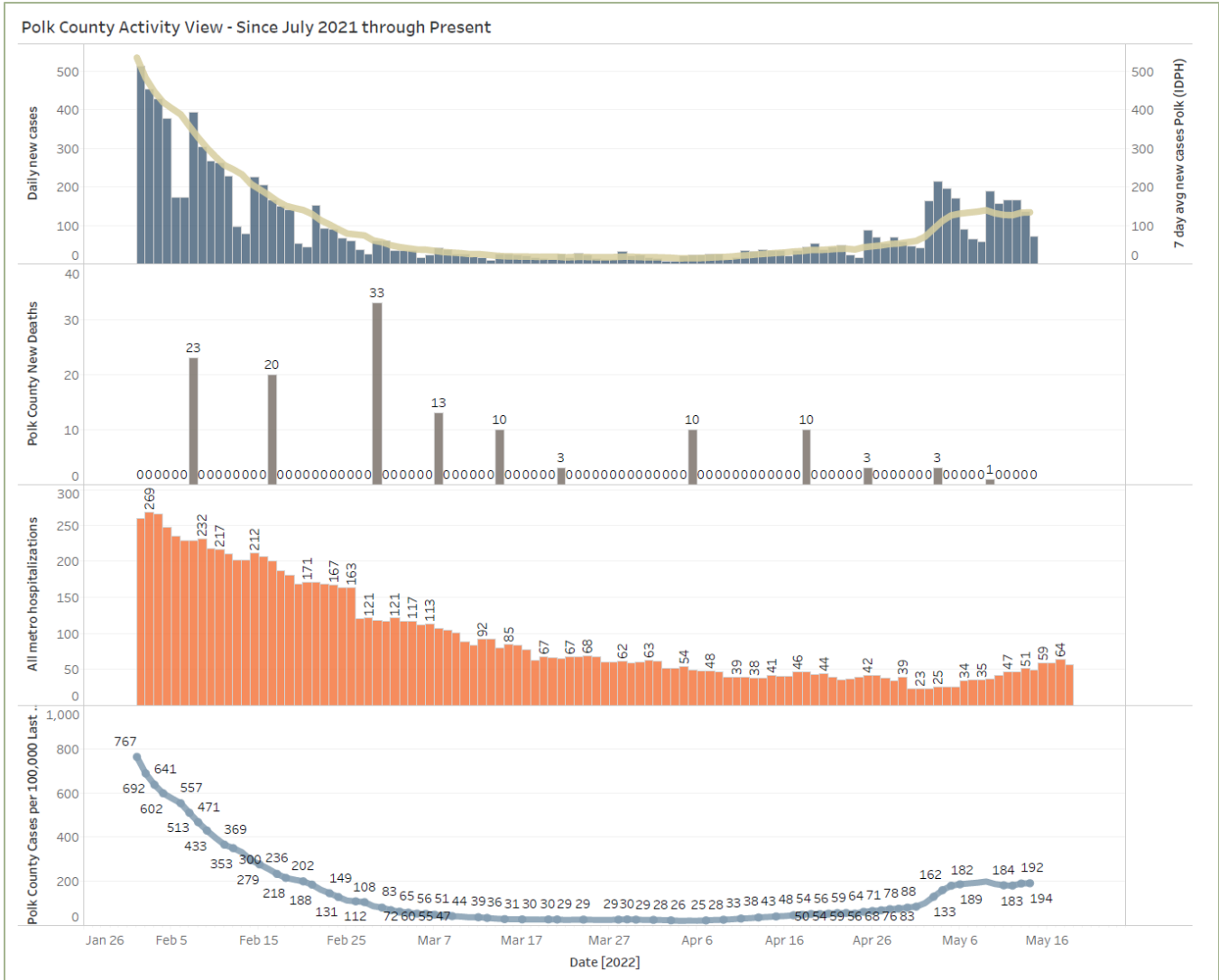
		New Student/Staff Case Rates per 1000																						
Week Ending	17-Nov	24-Nov	1-Dec	8-Dec	15-Dec	22-Dec	5-Jan	12-Jan	19-Jan	26-Jan	2-Feb	9-Feb	16-Feb	23-Feb	2-Mar	9-Mar	30-Mar	6-Apr	13-Apr	20-Apr	27-Apr	4-May	11-May	18-May
DMPs*	2.12	2.24	3.58	5.06	3.79	3.03	7.91	14.79	11.45	19.45	8.45	10.06	2.70	1.61	0.27	0.36	0.30	0.24	0.09	0.45	0.39	0.88	1.88	1.79
Ankeny	4.00	3.33	3.25	5.83	5.00	4.67	NA	18.42	32.08	40.58	24.83	18.33	6.42	3.42	1.92	0.50	0.17	0.17	0.17	0.67	0.67	1.17	1.42	3.42
Waukee	6.70	8.09	4.43	4.52	3.57	3.04	8.26	15.74	13.22	13.04	6.96	3.22	1.74	0.78	0.09	0.17	0.17	0.17	0.78	1.30	1.30	1.48	0.96	1.48
WDM	5.67	5.00	5.00	7.67	5.11	3.78	NA	19.67	31.67	33.44	26.11	11.56	9.11	3.33	3.33	1.22	0.22	0.56	0.22	1.00	2.00	1.44	1.44	5.00
Johnston	3.43	0.86	2.00	3.43	2.86	3.43	NA	8.29	24.57	36.29	8.71	10.29	2.14	2.86	1.71	0.86	0.29	0.14	0.29	0.29	0.29	0.29	0.29	2.00
SE Polk	2.29	3.14	4.14	5.29	2.86	1.71	1.86	13.29	14.71	11.57	10.29	4.86	2.14	1.00	0.29	0.43	0.00	0.00	0.14	0.14	0.14	0.43	0.71	1.71
Urbandale	3.25	4.25	3.00	3.75	1.75	2.75	11.00	29.00	46.00	31.50	20.00	12.00	11.75	7.00	1.25	1.25	1.25	0.75	1.00	1.00	0.75	0.75	1.75	1.25
School case rate	3.92	3.5	3.6	4.9	3.7	3.1	7.3	17.0	24.8	26.6	15.1	10.0	5.1	2.9	1.3	0.7	0.3	0.3	0.4	0.7	0.8	0.9	1.2	2.4

		New Student/Staff Cases																						
Week Ending	17-Nov	24-Nov	1-Dec	8-Dec	15-Dec	22-Dec	5-Jan	12-Jan	19-Jan	26-Jan	2-Feb	9-Feb	16-Feb	23-Feb	30-Feb	9-Mar	30-Mar	6-Apr	13-Apr	20-Apr	27-Apr	4-May	11-May	18-May
DMPs*	70	74	118	167	125	100	261	488	378	642	279	332	89	53	9	12	10	8	3	15	13	29	62	59
Ankeny	48	40	39	70	60	56	NA	221	385	487	298	220	77	41	23	6	2	2	2	8	8	14	17	41
Waukee	90	105	63	65	48	36	120	210	186	150	80	37	20	9	1	2	2	2	9	15	15	17	11	17
WDM	51	45	45	69	46	34	NA	177	285	301	235	104	82	30	11	2	5	2	9	18	13	13	45	
Johnston	24	6	14	24	20	24	NA	72	208	254	61	72	15	20	12	6	2	1	2	2	2	2	2	14
SE Polk	16	22	29	37	20	12	13	93	103	81	72	34	15	7	2	3	0	0	1	1	1	3	5	12
Urbandale	13	17	12	15	7	11	44	116	184	126	80	48	47	28	5	5	5	3	4	4	3	3	7	5
Total School Cases	312	309	320	447	326	273	438	1377	1729	2041	1105	847	345	188	82	45	23	21	23	54	60	81	117	193
Polk Weekly Cases	1607	1663	2172	1959	2075	2700	6251	10785	9850	7116	4045	2515	1468	919	439	250	162	144	141	114	164	246	406	651
Polk County Weekly Case Rate	328	339	443	400	423	551	1276	2201	2010	1452	826	513	300	188	90	51	33	29	29	23	33	50	83	133



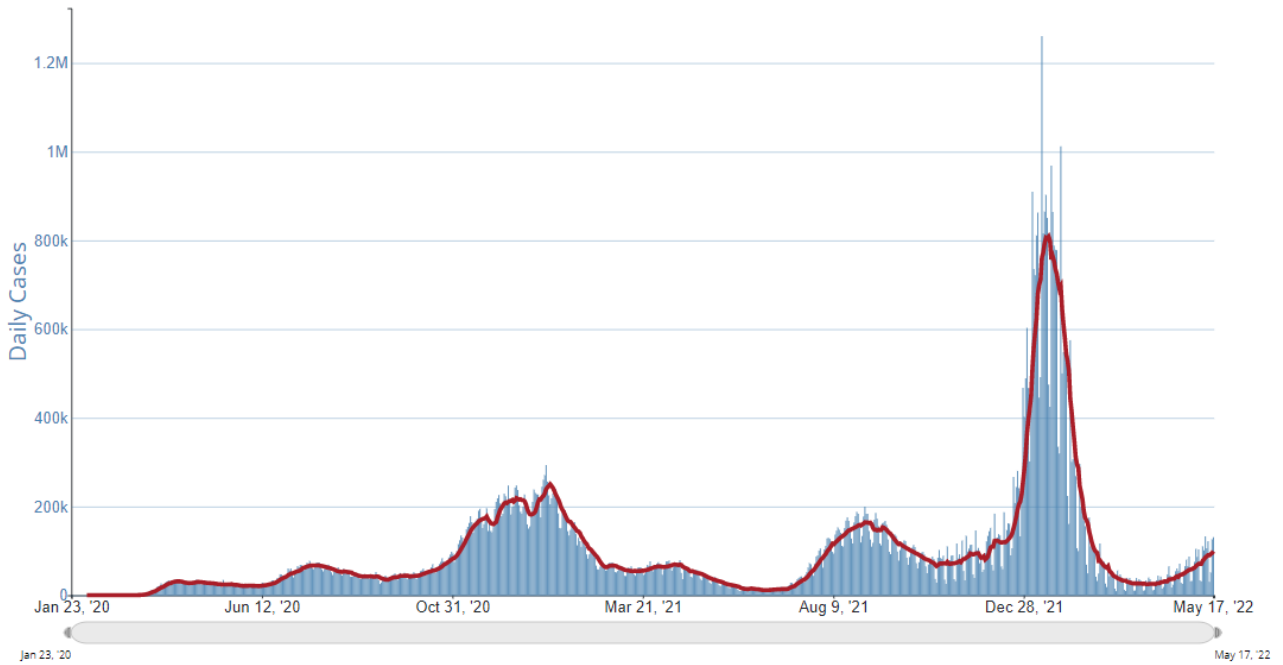
# Central Iowa COVID19 Update



# Central Iowa COVID19 Update



Daily Trends in Number of COVID-19 Cases in The United States Reported to CDC



	CASES DAILY AVG.	PER 100,000	14-DAY CHANGE	HOSPITALIZED DAILY AVG.	PER 100,000	14-DAY CHANGE	DEATHS DAILY AVG.	PER 100,000	FULLY VACCINATED
United States	103,231	31	+57%	22,875	7	+27%	303.8	0.09	66%
Puerto Rico >	4,512	133	+14%	356	11	+39%	5.3	0.16	79%
U.S. Virgin Islands >	126	118	+298%	18	17	+52%	0.2	0.21	54%
Rhode Island >	820	77	+46%	99	9	+42%	1.9	0.18	83%
Connecticut >	2,645	74	+158%	402	11	+43%	5.6	0.16	80%
Hawaii >	1,003	71	+69%	124	9	+61%	1.7	0.12	78%
Massachusetts >	4,674	68	+59%	816	12	+47%	12.6	0.18	79%
New Jersey >	4,978	56	+66%	831	9	+40%	9.9	0.11	76%
Washington, D.C. >	395	56	+118%	98	14	+32%	0.3	0.04	78%
Vermont >	342	55	+5%	68	11	+17%	0.9	0.14	81%
New York >	10,298	53	+32%	2,761	14	+18%	23.3	0.12	77%