



# Central Iowa COVID19 Update

---

Thursday, September 10, 2020



Aperio

Statistical Consulting

Dr. Meg Schaeffer





# Central Iowa COVID19 Update

## Quick Stats

	Polk County	Iowa
7d Lab Test Positivity <sup>1</sup>	7%	8%
14d Lab Test Positivity <sup>1</sup>	8%	9%
Total cases per 100,000 <sup>2</sup>	141	191
Average daily cases the last 7d <sup>3</sup>	99	739

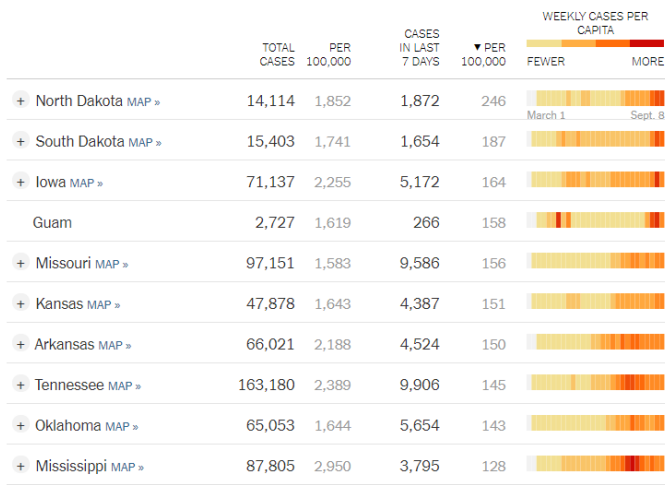
<sup>1</sup>Daily positivity is taken directly from <https://coronavirus.iowa.gov/pages/case-counts> with previous days refreshed daily.

<sup>2</sup>Case counts are drawn from <https://github.com/nytimes/covid-19-data> with totals aligned with state totals. Population used is 490,161.

<sup>3</sup>Average cases are drawn from <https://github.com/nytimes/covid-19-data> with totals aligned with state totals.

## Critical Points

- Polk County and Iowa cases remain high, but decreasing.
- Iowa and the Dakotas still have the highest case counts per capita.
- In order for Polk County to drop to 100 cases or lower per 100,000 (the past 7 days), the average daily case count needs to be 70 or lower.



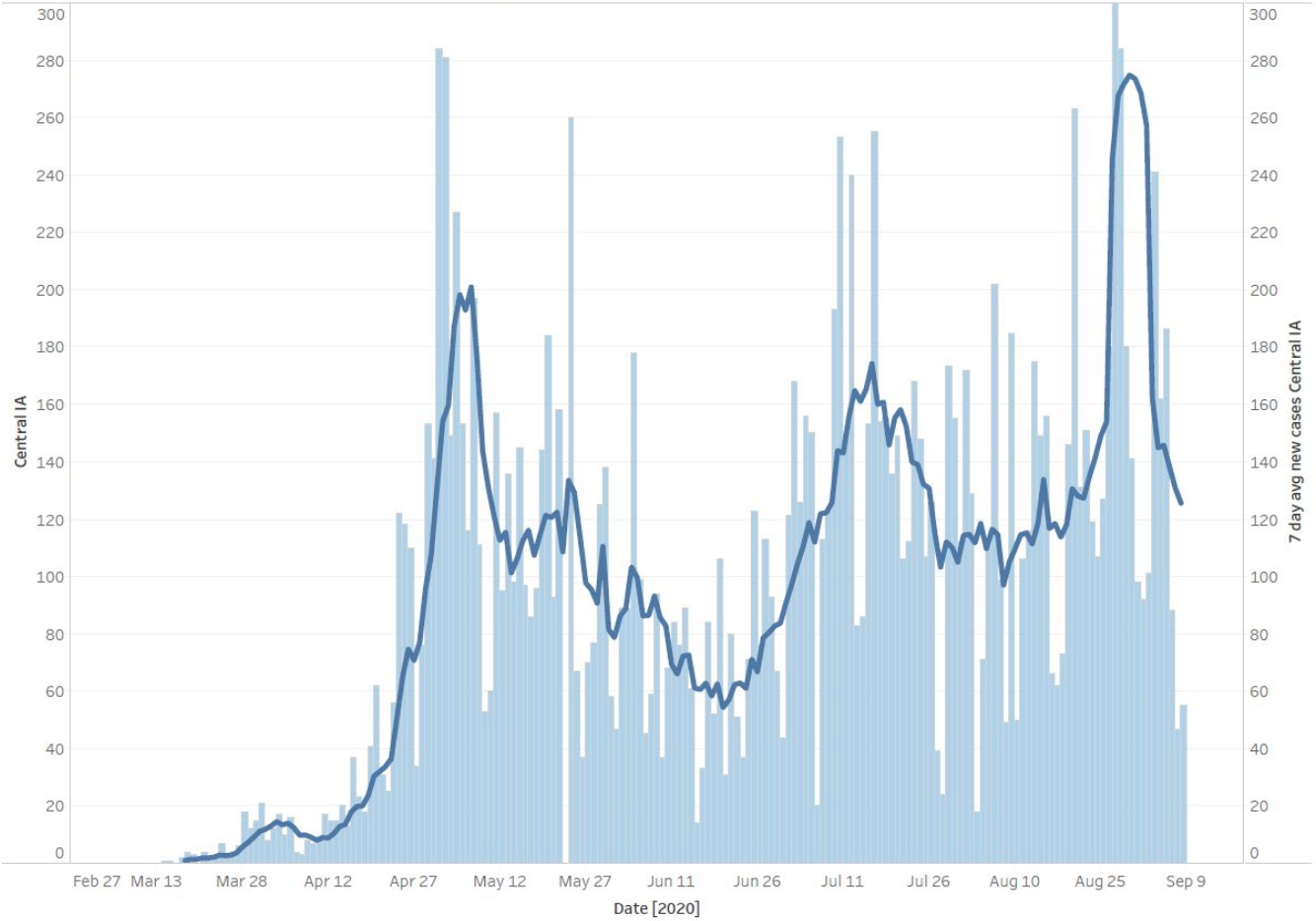
## Research & Media

- Spike in Iowa cases eases, but remains high
- <https://www.thegazette.com/subject/news/health/iowa-coronavirus-spike-eases-but-positive-rate-remains-high-20200907>
- A participant in an AstraZeneca-lead vaccine trial experienced an adverse medical event after receiving their vaccine. The trial was stopped while investigators determine whether the vaccine was the cause of the event.
- <https://www.nytimes.com/2020/09/10/health/covid-astrazeneca-vaccine-trans.html>
- Multiple media outlets are reporting the potential for a COVID-19 vaccine by the end of October. It is likely only small amounts will be available at first, with the majority of the population vaccinated by mid-2021; the world target is two billion doses by the end of 2021.
  - Both frontrunner vaccines are mRNA, which is a new type of vaccine. The vaccine works by targeting the S protein and its variants, as the primary antigen.
  - <https://www.nature.com/articles/d41573-020-00151-8>
- Iowa has committed \$100M to COVID-19 testing
- <https://www.kcrg.com/2020/09/07/iowa-to-use-100m-for-coronavirus-testing/>

# Central Iowa COVID19 Update

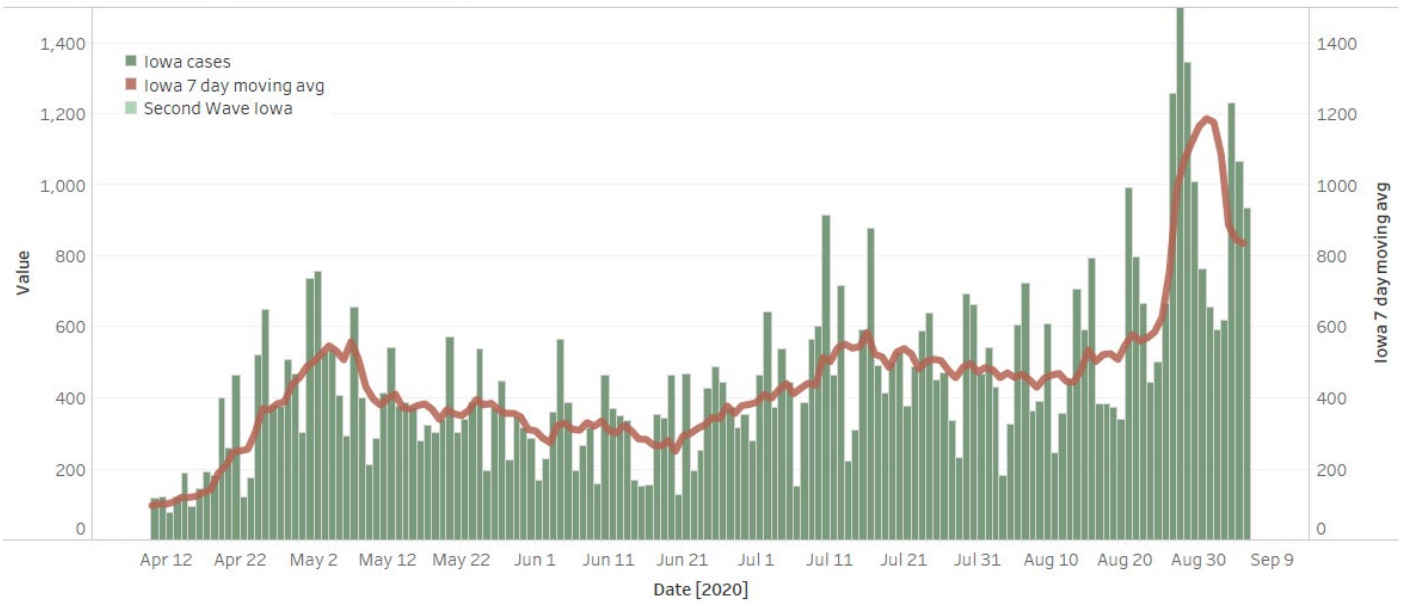


## Central Iowa trend and 7d moving average

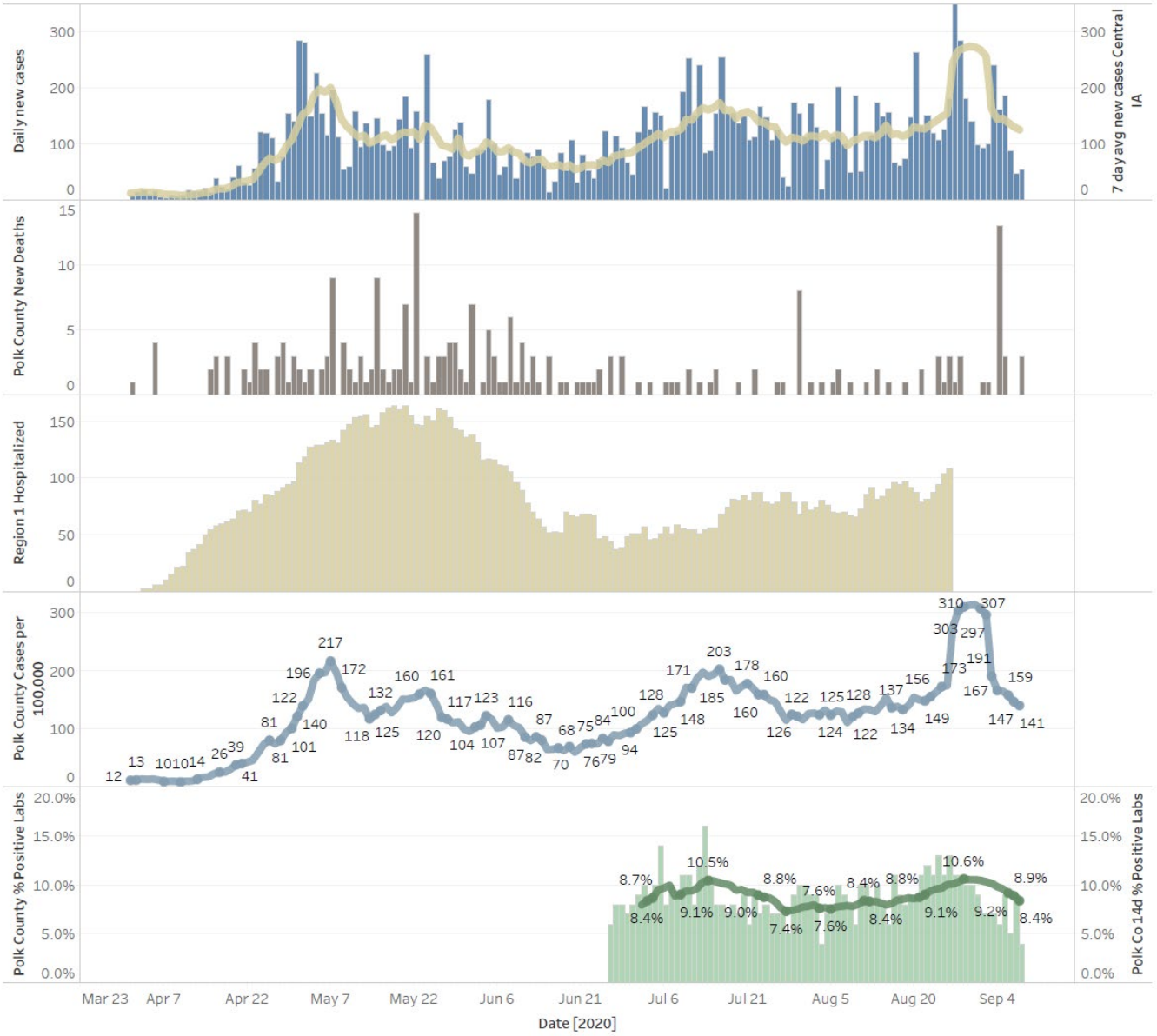


The trends of Central IA and 7 day avg new cases Central IA for Date. Color shows details about Date Year, Central IA and 7 day avg new cases Central IA.

## Iowa Cases by Day and 7d Moving Average



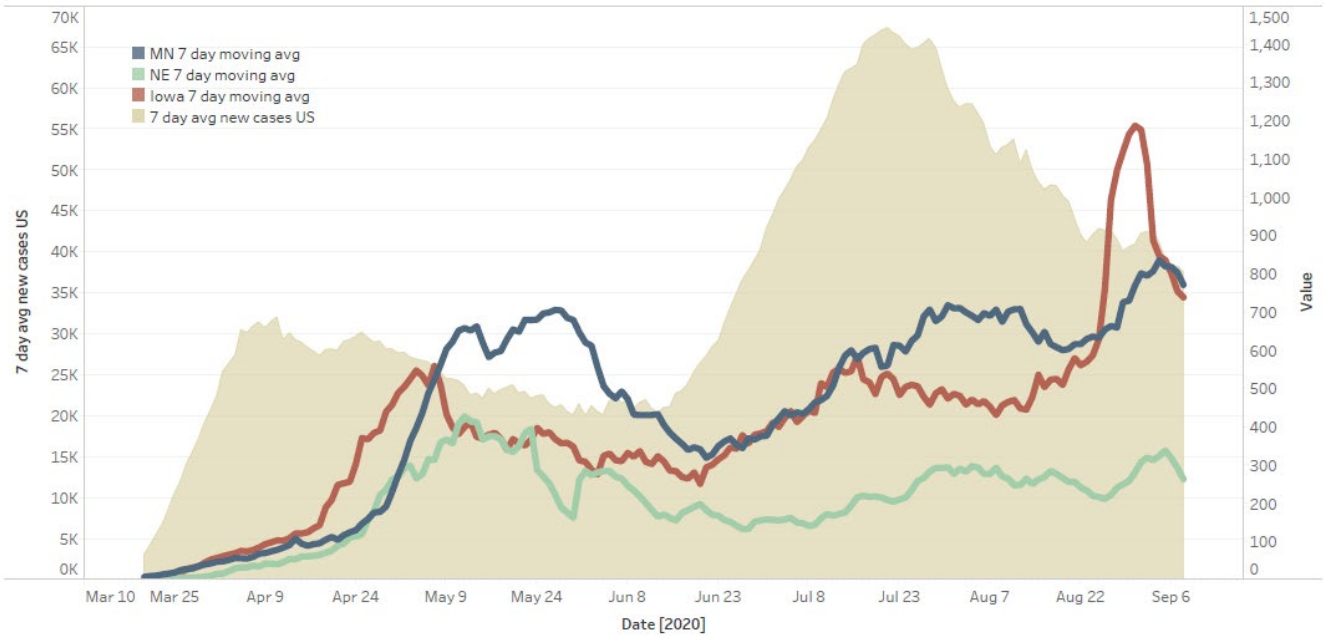
### Polk County Activity View



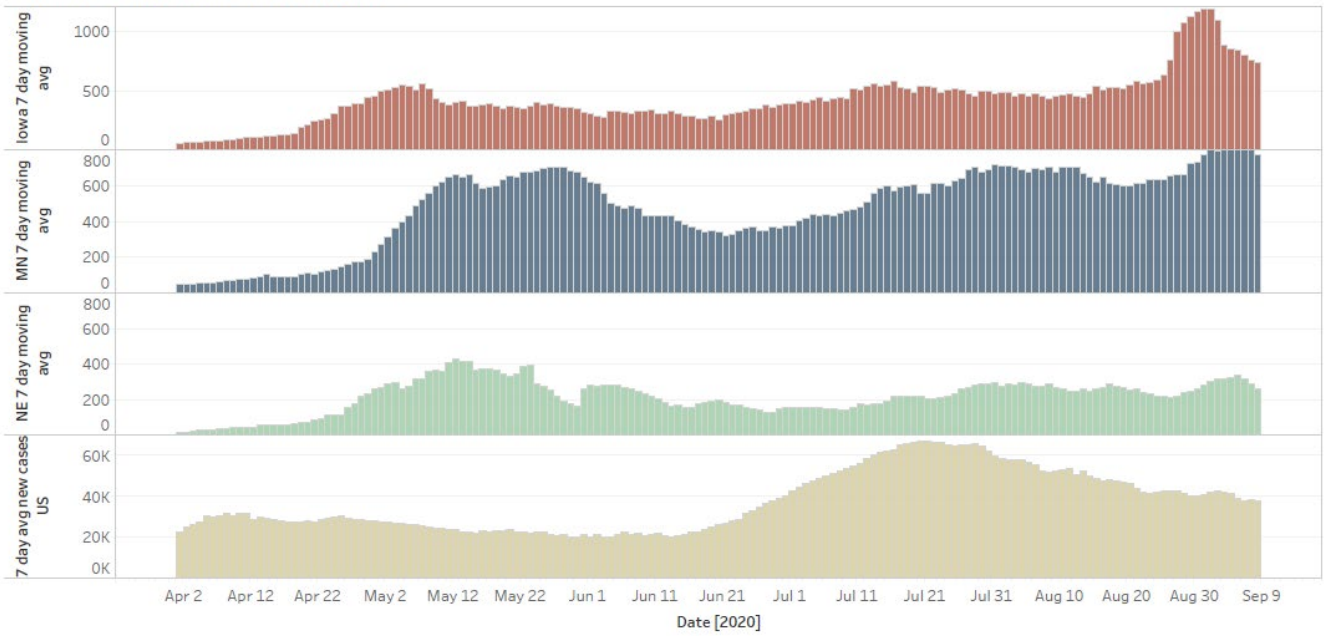
# Central Iowa COVID19 Update



## US and Border State Cases

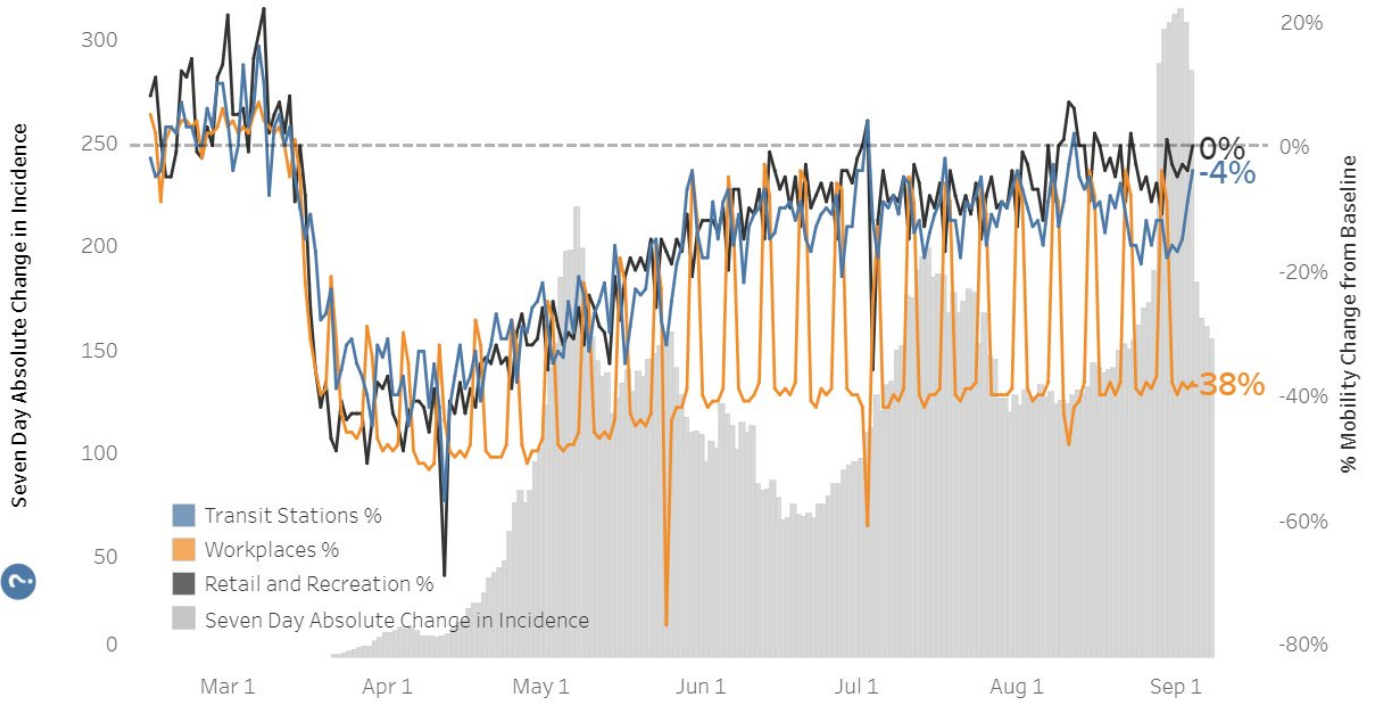


## US, Iowa, MN, NE New Daily Cases





Polk County, IA



<p><b>WORKPLACES</b></p> <p><b>-38%</b></p>	
<p><b>RETAIL AND RECREATION</b></p> <p><b>0%</b></p>	
<p><b>TRANSIT STATIONS</b></p> <p><b>-4%</b></p>	
<p><b>% AT HOME</b></p> <p><b>23%</b></p>	
<p><b>MOBILITY INDEX</b></p> <p><b>3.9</b></p>	