



Central Iowa COVID19 Update

Wednesday, May 26, 2021



Statistical Consulting

Dr. Meg Schaeffer





Quick Stats¹

	Polk County	Iowa
Percent of population with 1 dose*	8.2%	5.6%
Percent of population with 2 doses*	44%	42.3%
7d Lab Test Positivity	2.3%	2.4%
14d Lab Test Positivity	2.9%	2.7%
Total cases per 100,000 the last 7d	43	42
Total cases per 100,000 the last 14d	101	95
Average daily cases the last 7d	30	189
Average 7-day new cases per 100,000	6	6

*Percent of entire population vaccinated to represent progress to herd immunity.

All data are sourced from <https://coronavirus.iowa.gov/pages/case-counts> with previous days refreshed daily. When recent data are unavailable, data from <https://github.com/nytimes/covid-19-data> may be used. Population of Polk County used is 490,161.

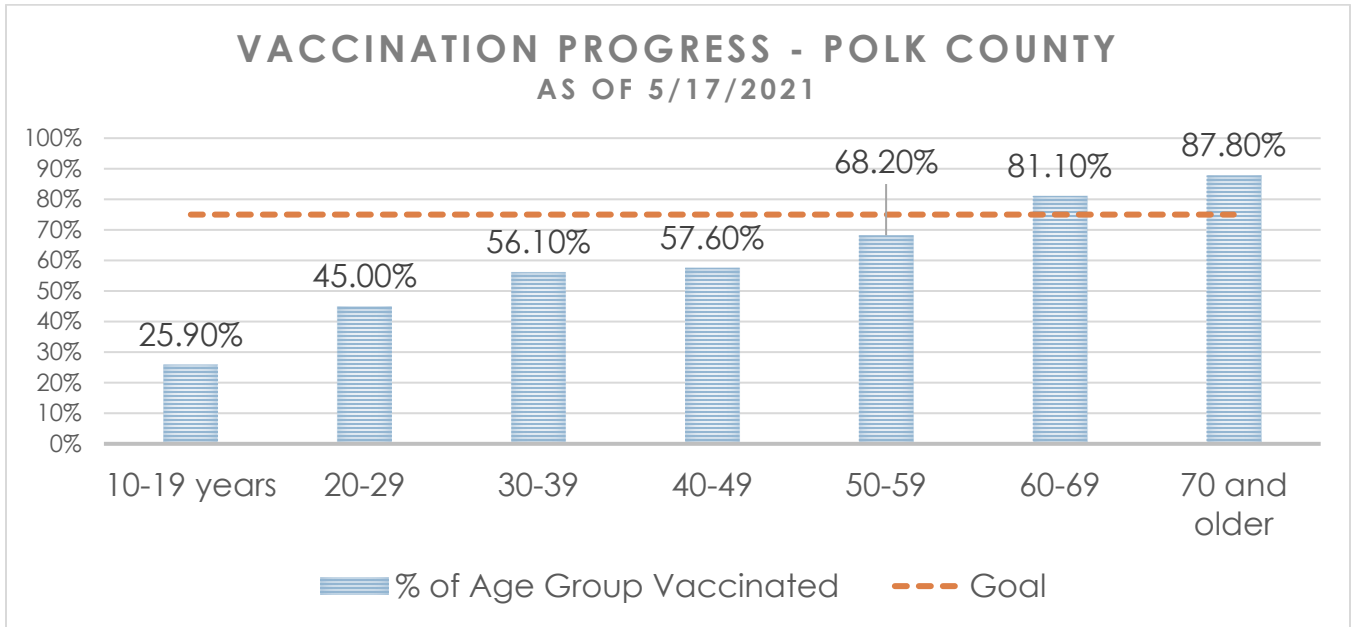
Population of Iowa used is 3.155 million. Averages and percent positivity are subject to change with retrospectively refreshed data.

Critical Points, Media, and Research

- Cases continue to drop as vaccination increases. Ten states have reached 70% coverage with at least one dose.
- Vaccination progress is strong recently boosted by the addition of 12–15-year-old adolescents. The first day of eligibility resulted in more than 10,000 vaccinated statewide.
- [Covid-19 cases, deaths, and vaccinations: Daily U.S. data on May 26 \(cnbc.com\)](#)
- [May 26, 2021 coronavirus news \(cnn.com\)](#)
- [Scientists claim to have solved Covid vaccine blood-clot puzzle | Financial Times \(ft.com\)](#)
- [Heterologous prime-boost COVID-19 vaccination: initial reactogenicity data - The Lancet](#)
- Myocarditis in young vaccine recipients
 - [CDC is Investigating Heart Problems in a Few Young Covid-19 Vaccine Recipients - The New York Times \(nytimes.com\)](#)
 - [Inflammation of the heart and vaccines - Your Local Epidemiologist \(substack.com\)](#)
- [Immunogenicity of COVID-19 mRNA Vaccines in Pregnant and Lactating Women | JAMA](#)
- [Covid-19 Vaccine Acceptance in California State Prisons | NEJM](#)
- [Public attitudes toward COVID-19 vaccination: The role of vaccine attributes, incentives, and misinformation \(nature.com\)](#)
 - Efficacy messaging had greatest effect on willingness to vaccinate. Approaches reducing acceptance included EUA vs full approval, financial incentives, and co-pays. Vaccine manufacturer had no influence on attitudes. Study sample was ~4,000.
- [Plans to vaccinate children for COVID-19: a survey of US parents | medRxiv](#)
 - In a national online survey of 2,074 US parents conducted in March 2021, 49.4% reported plans to vaccinate their child for COVID-19 when available. Lower income and less education were associated with greater parental vaccine hesitancy/resistance, while safety, effectiveness and lack of need were the primary reasons for vaccine hesitancy/resistance.
- [A retrospective cohort study of 12,306 pediatric COVID-19 patients in the United States | Scientific Reports \(nature.com\)](#)
- [Quantifying the relationship between SARS-CoV-2 viral load and infectiousness | medRxiv](#)



Vaccine Progress

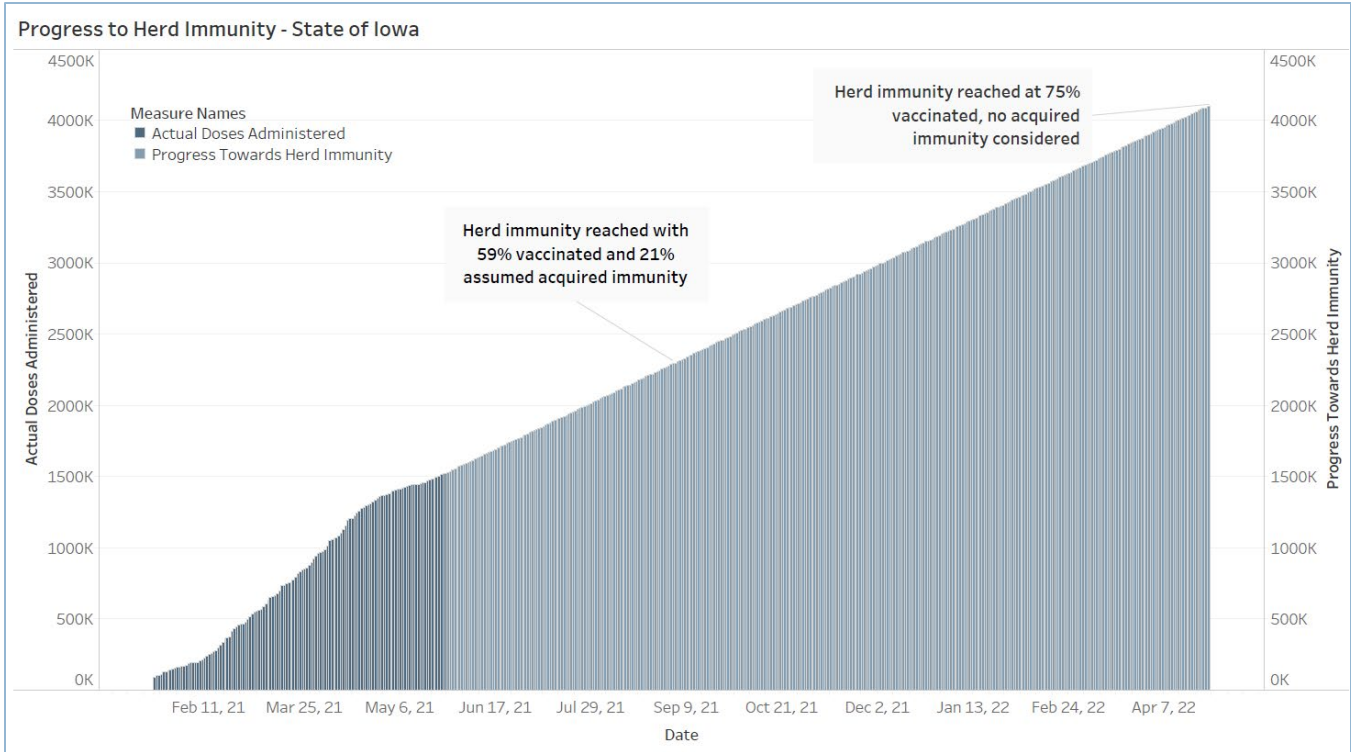


Number of Doses Administered (by date of report)	Initiated Vaccination (1st dose/No Janssen)	Completed Vaccination (2nd dose/Janssen)	Total Polk Co Residents Partially/Fully Vaccinated	Total Population of Polk County (all ages)
440,365	35,542 (7%)	207,665 (42.4%)	243,207 (50%)	490,121

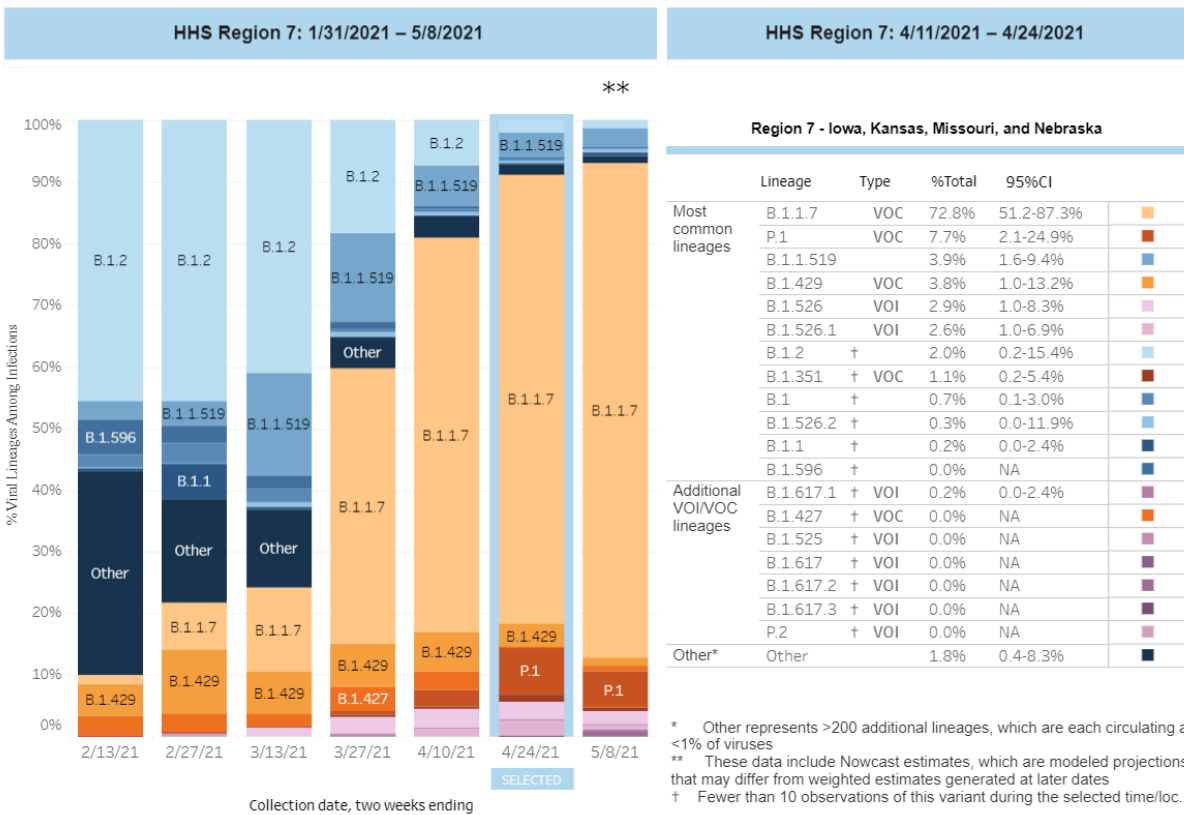
Age Group	Vaccinated	% Age Group Vaccinated	Estimated Census Population*
10-19 years	16,118	25.90%	62,295
20-29	31,112	45.00%	69,065
30-39	39,231	56.10%	69,982
40-49	37,649	57.60%	65,361
50-59	40,757	68.20%	59,727
60-69	39,949	81.10%	49,269
70 and older	38,391	87.80%	43,742
Total	243,207	58.00%	419,441

*U.S Census Bureau Polk County (2019 1yr estimate). Census predetermined age data includes non-eligible ages 10 and 11 years old.

Central Iowa COVID19 Update



Variant Prevalence



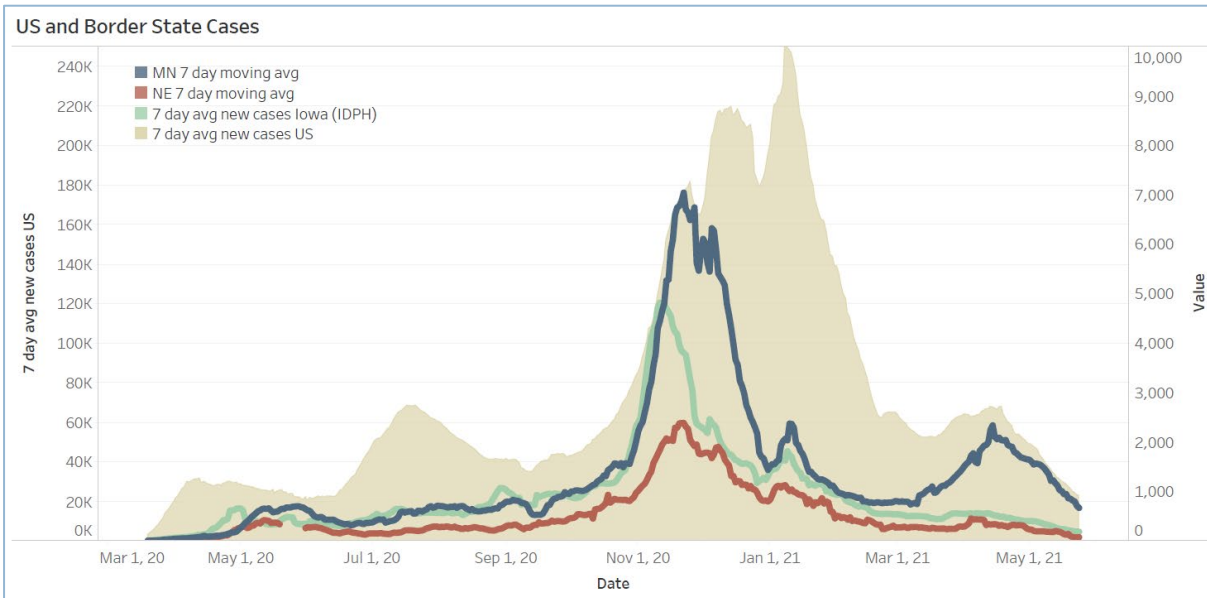
Central Iowa COVID19 Update



School Statistics – Polk County (Updated weekly on Mondays)

Rate of Student/Staff Cases Per 1,000											
Week Ending	7-Mar	15-Mar	29-Mar	5-Apr	12-Apr	19-Apr	26-Apr	3-May	10-May	17-May	24-May
DMPS	0.7	0.5	0.1	0.2	0.1	0.2	0.2	0.1	0.1	0.2	0.1
Ankeny	0.7	1.0	1.5	1.5	1.2	0.4	0.8	1.8	0.6	0.3	0.5
Waukee	1.7	1.7	1.9	0.8	0.6	1.1	0.4	0.4	1.0	0.1	0.2
WDM	1.1	1.6	1.2	0.6	1.1	1.2	0.6	0.9	0.2	0.4	
Johnston	1.6	1.1	2.4	0.3	1.1	1.7	0.3	1.1	1.3	1.1	
SE Polk	2.1	2.3	1.3	2.0	1.3	0.3	1.3	1.4	2.0	1.3	0.4
Urbandale	2.8	2.8	0.3	2.0	2.0	0.5	0.5	1.5	0.3	0.3	0.3
DCG	1.3	2.5	4.1	1.3	1.6	2.5	0.6	0.9	2.2	0.6	0.0
Bondurant	0.5	2.3	3.7	1.9	4.2	6.0	3.7	2.8	3.2	0.9	2.8
North Polk	1.1	0.6	1.7	1.1	0.0	0.6	0.0	0.0	0.0	0.6	0.0
Ballard	1.2	1.2	4.1	1.2	1.2	0.6	0.6	0.6	0.6	0.6	0.0
Saydel	0.7	0.0	1.5	0.0	0.0	0.0	2.2	3.7	2.2	2.2	0.7

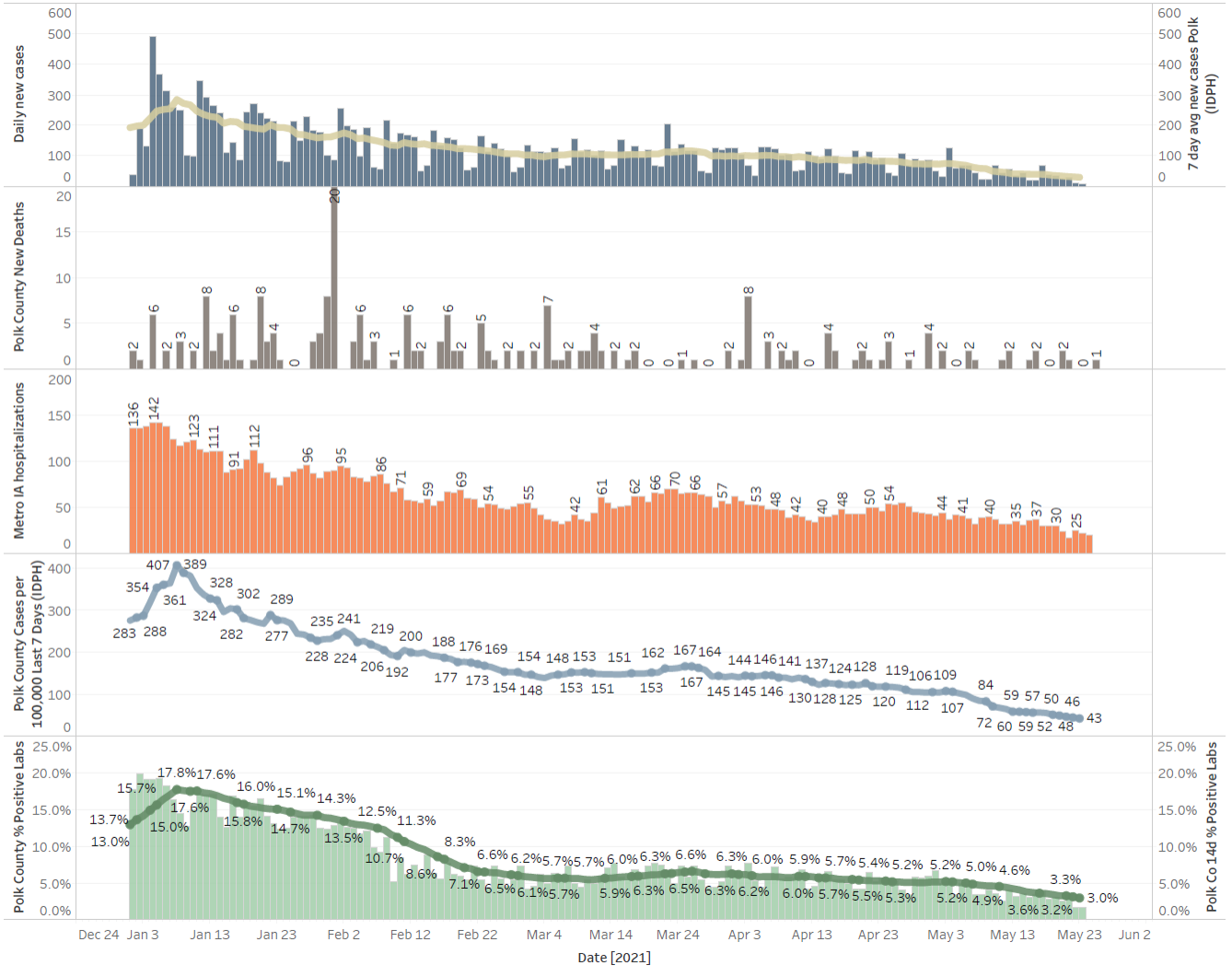
Students/Staff in Quarantine											
Week Ending	7-Mar	15-Mar	29-Mar	5-Apr	12-Apr	19-Apr	26-Apr	3-May	10-May	17-May	24-May
DMPS	193	203	134	141	115	154	137	143	125	81	75
Ankeny	45	53	36	101	94	29	62	85	31	26	19
Waukee	65	79	62	41	24	41	25	34	47	24	
WDM	25	41	33	28	22	27	14	14	8	3	0
Johnston	84	85	68	48	68	78	34	40	55	38	0
SE Polk	93	77	45	54	34	39	33	29	22	22	11
Urbandale	51	51	27	38	35	24	20	31	23	15	14
DCG	37	37	29	27	30	31	18	17	13	9	6
Bondurant	18	18	0	21	38	22	35	24	20	9	1
North Polk	34	31	13	16	12	10	13	8	0	0	0
Ballard	16	18	2	2	2	12	1	1	1	1	0
Saydel	18	15	7	3	4	9	10	15	10	10	0
Total	679	708	456	520	478	476	402	441	355	238	126



Central Iowa COVID19 Update



Polk County Activity View - Since Jan 1 2021 through Predictive



Iowa Cases by Day and 7d Moving Average

