



# Central Iowa COVID19 Update

---

Tuesday, November 3, 2020



Aperio

Statistical Consulting

Dr. Meg Schaeffer





## Quick Stats<sup>1</sup>

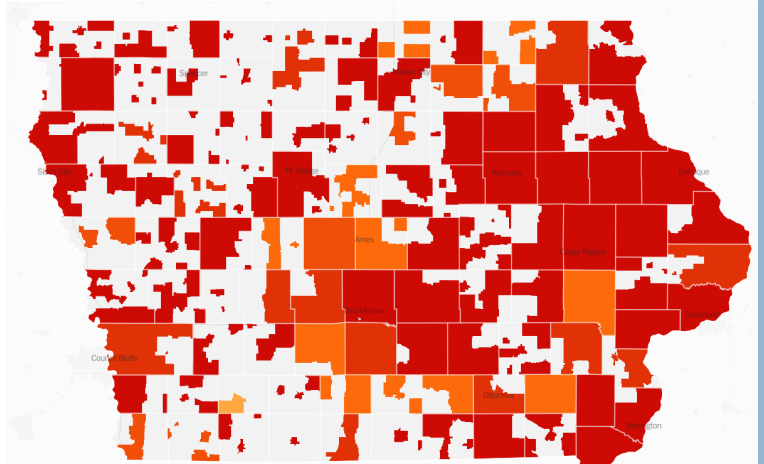
	Polk County	Iowa
7d Lab Test Positivity	13%	15%
14d Lab Test Positivity	12%	14%
Total cases per 100,000 for 7d	372	465
Total cases per 100,000 for 14d	574	747
Average daily cases the last 7d	198	1768
Average 7-day new cases per 100,000	40	56

<sup>1</sup>All data are sourced from <https://coronavirus.iowa.gov/pages/case-counts> with previous days refreshed daily. When recent data are unavailable, data from <https://github.com/nytimes/covid-19-data> may be used. Population of Polk County used is 490,161. Population of Iowa used is 3.155 million. Averages and percent positivity are subject to change with retrospectively refreshed data.

## Critical Points

- Polk County activity is double that of last week. If the trend continues, activity will triple the first peak in a little over two weeks.
- Statewide hospitalizations are almost double the first peak.

	TOTAL CASES	PER 100,000	DAILY AVG. IN LAST 7 DAYS	▼ PER 100,000	WEEKLY CASES PER CAPITA FEWER MORE March 1 Nov. 1
+ North Dakota MAP »	46,020	6,039	1,046.3	137.3	
+ South Dakota MAP »	47,850	5,409	1,160.1	131.1	
+ Wisconsin MAP »	244,974	4,207	4,643.7	79.8	
+ Montana MAP »	34,317	3,211	802.1	75.1	
+ Iowa MAP »	132,136	4,188	2,122.7	67.3	
+ Wyoming MAP »	14,167	2,448	383.1	66.2	
+ Nebraska MAP »	71,824	3,713	1,124.1	58.1	
+ Alaska MAP »	16,948	2,317	375.6	51.3	
+ Utah MAP »	117,706	3,671	1,636.7	51.1	
+ Illinois MAP »	431,308	3,404	6,399.3	50.5	



## NYT US Activity

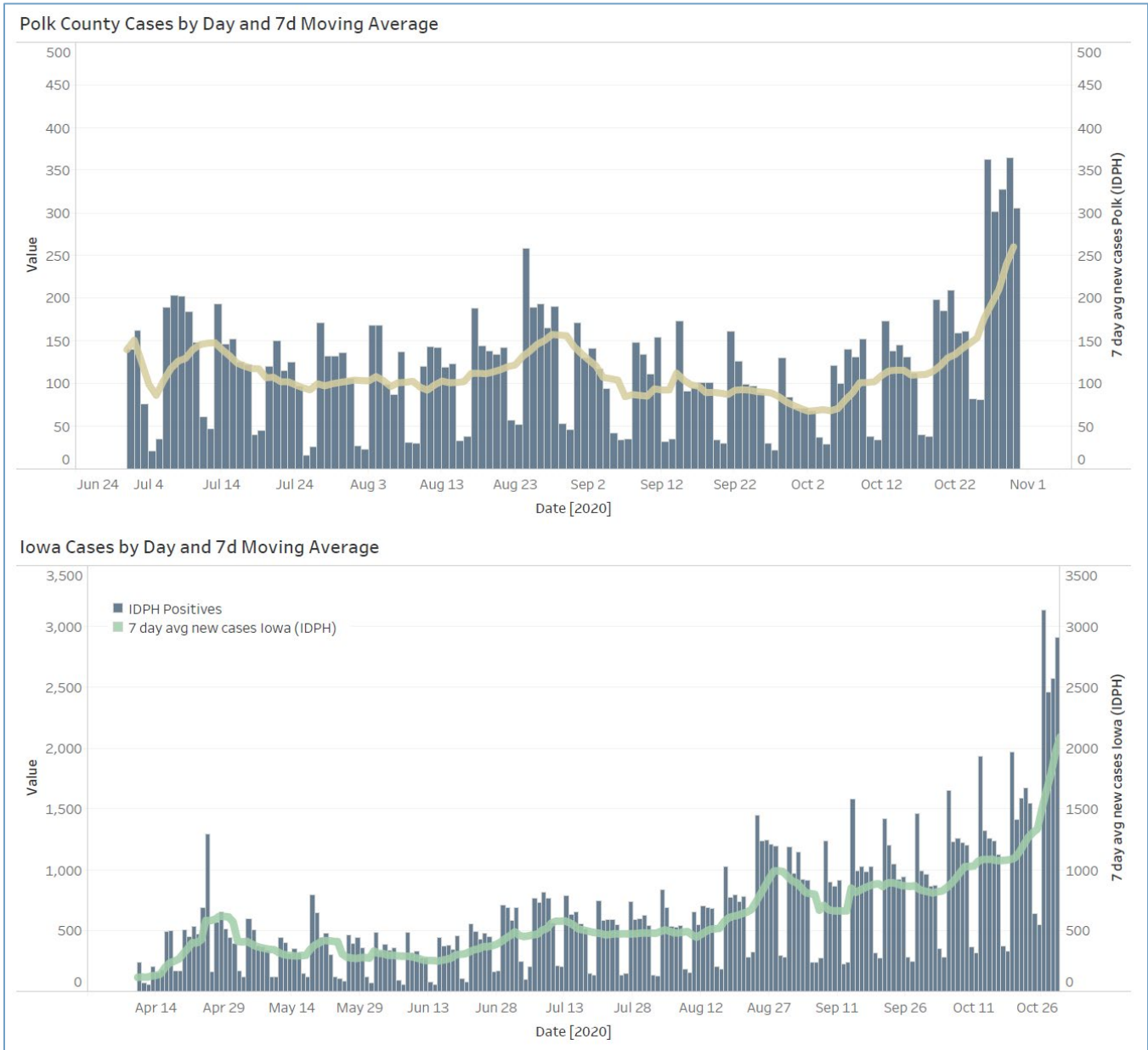
## Research & Media

- In an analysis of approximately 400,000 women aged 15–44 years with symptomatic COVID-19, serious illness and death were more likely in pregnant women than in nonpregnant women.
- [https://www.cdc.gov/mmwr/volumes/69/wr/mm6944e3.htm?s\\_cid=mm6944e3\\_w](https://www.cdc.gov/mmwr/volumes/69/wr/mm6944e3.htm?s_cid=mm6944e3_w)
- Pregnant women with SARS-CoV-2 infection are at increased risk for severe illness compared with nonpregnant women. Adverse pregnancy outcomes such as preterm birth and pregnancy loss have been reported.
- [https://www.cdc.gov/mmwr/volumes/69/wr/mm6944e2.htm?s\\_cid=mm6944e2\\_w](https://www.cdc.gov/mmwr/volumes/69/wr/mm6944e2.htm?s_cid=mm6944e2_w)
- During July 2–August 11, 2020, a COVID-19 outbreak at an overnight high-school retreat likely began with a single student who had received a negative SARS-CoV-2 molecular test result <1 week before the retreat and led to 116 (76%) diagnosed COVID-19 cases among attendees.
- [https://www.cdc.gov/mmwr/volumes/69/wr/mm6943a4.htm?s\\_cid=mm6943a4\\_w](https://www.cdc.gov/mmwr/volumes/69/wr/mm6943a4.htm?s_cid=mm6943a4_w)
- Findings from a prospective household study with intensive daily observation for ≥7 consecutive days indicate that transmission of SARS-CoV-2 among household members was frequent from either children or adults.
- [https://www.cdc.gov/mmwr/volumes/69/wr/mm6944e1.htm?s\\_cid=mm6944e1\\_w](https://www.cdc.gov/mmwr/volumes/69/wr/mm6944e1.htm?s_cid=mm6944e1_w)

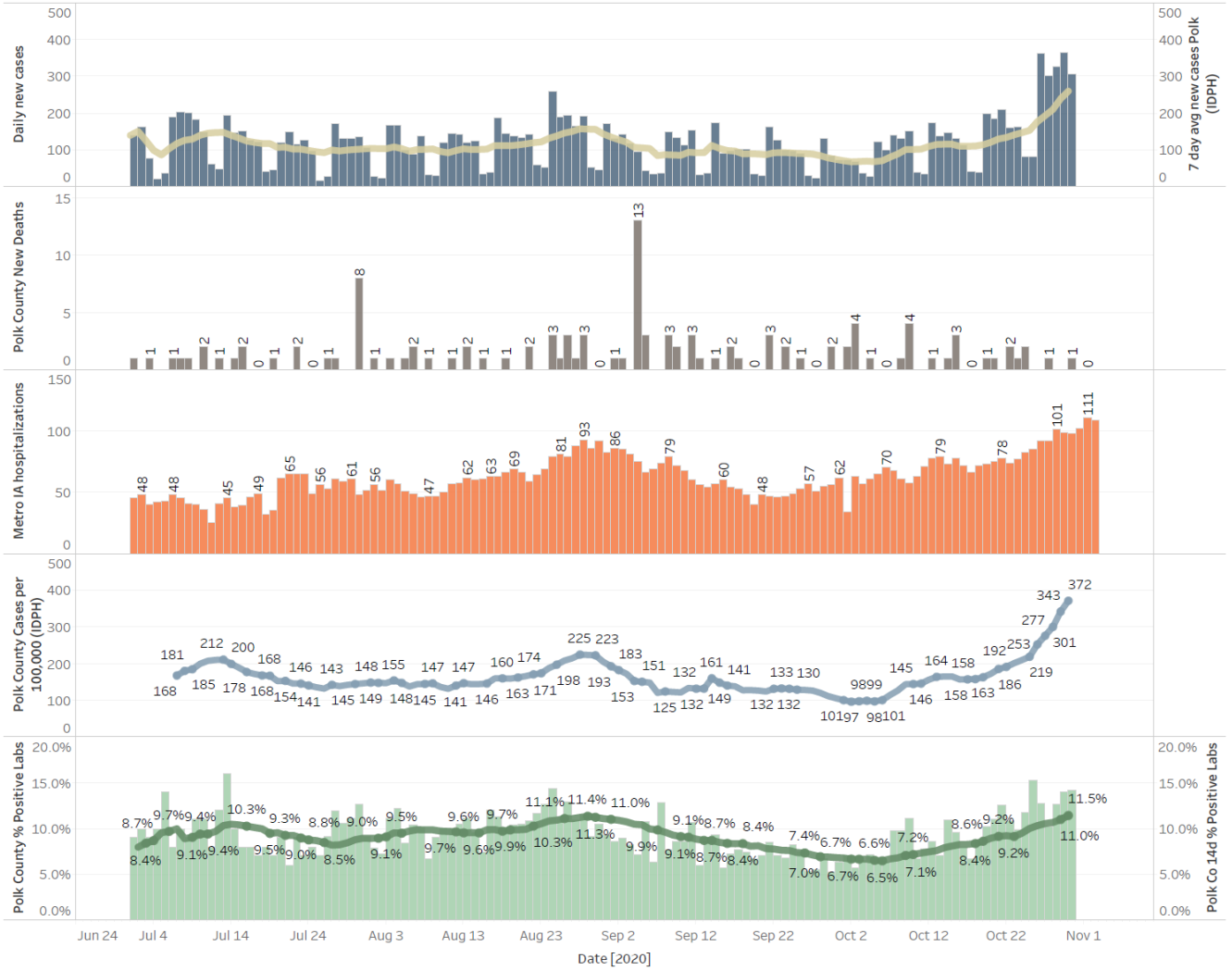
# Central Iowa COVID19 Update



- According to a JAMA article, without an effective vaccine that is widely available and broadly adopted, the US will likely not achieve protection against SARS-CoV-2 through herd immunity.
- <https://jamanetwork.com/journals/jama/fullarticle/2772167>
- SARS-CoV-2 sequencing reveals rapid transmission from college student clusters resulting in morbidity and deaths in vulnerable populations
- <https://www.medrxiv.org/content/10.1101/2020.10.12.20210294v1.full>



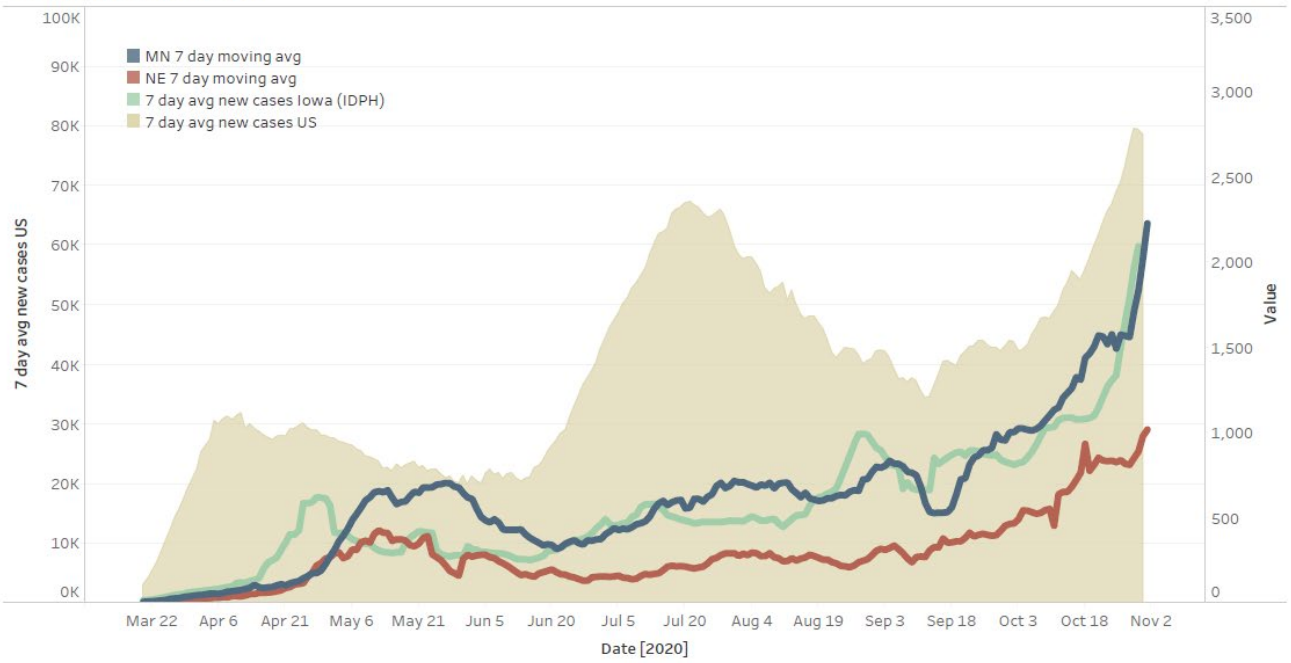
### Polk County Activity View



# Central Iowa COVID19 Update



## US and Border State Cases



## US, Iowa, MN, NE New Daily Cases

