



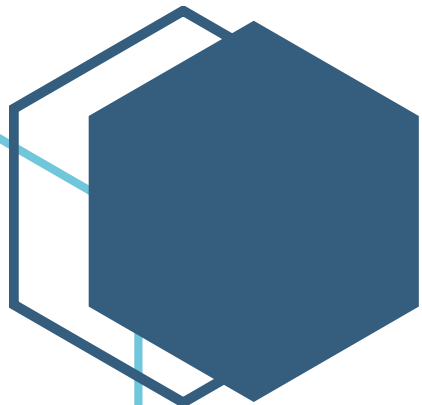
Central Iowa COVID19 Update

Monday, November 30, 2020



Statistical Consulting

Dr. Meg Schaeffer





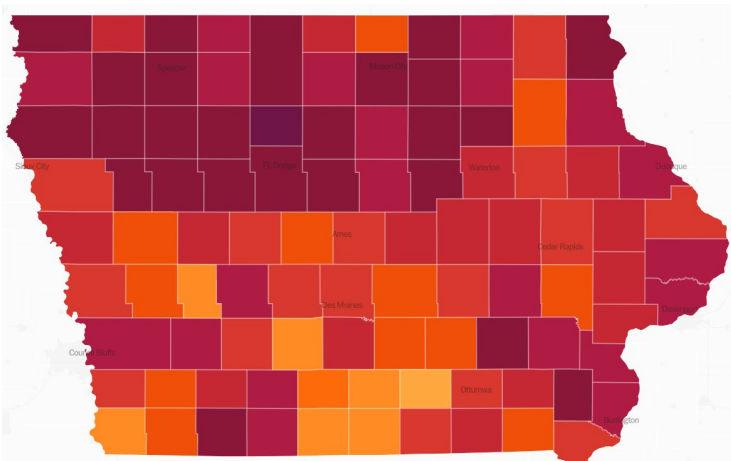
Quick Stats¹

	Polk County	Iowa
7d Lab Test Positivity	14.1%	15%
14d Lab Test Positivity	16.3%	18.5%
Total cases per 100,000 the last 7d	413	458
Total cases per 100,000 the last 14d	1103	1235
Average daily cases the last 7d	289	2065
Average 7-day new cases per 100,000	59	65

¹All data are sourced from <https://coronavirus.iowa.gov/pages/case-counts> with previous days refreshed daily. When recent data are unavailable, data from <https://github.com/nytimes/covid-19-data> may be used. Population of Polk County used is 490,161. Population of Iowa used is 3.155 million. Averages and percent positivity are subject to change with retrospectively refreshed data.

Critical Points, Media, and Research

- Activity in Polk County, Iowa, and the US has peaked, though some states are still surging. Iowa is no longer in the top ten states with the highest cases per capita.
- Polk County is averaging three new COVID-19 deaths per day.
- Influenza activity has not been detected, though is expected towards the end of December.
- Epidemiologists concur the next three months will be challenging at best. <https://www.nytimes.com/2020/11/30/health/coronavirus-vaccines-treatments.html?action=click&module=Top%20Stories&pgtype=Homepage>
- Moderna applied for EUA today (11/30). <https://www.cnn.com/2020/11/30/health/moderna-vaccine-fda-eua-application/index.html>. In addition, Moderna's vaccine proved 100% effective against severe illness. <https://www.sciencemag.org/news/2020/11/absolutely-remarkable-no-one-who-got-modernas-vaccine-trial-developed-severe-covid-19>
- Societal norms and government mask wearing policies are effective mitigation strategies to reduce the spread of COVID-19. Early adoption greatly reduced mortality. <https://www.ajtmh.org/content/journals/10.4269/ajtmh.20-1015>
- A study in Nature identified full-service restaurants as the source of the greatest number of infections following reopening. <https://www.nature.com/articles/s41586-020-2923-3>



[NYT US Activity](#)



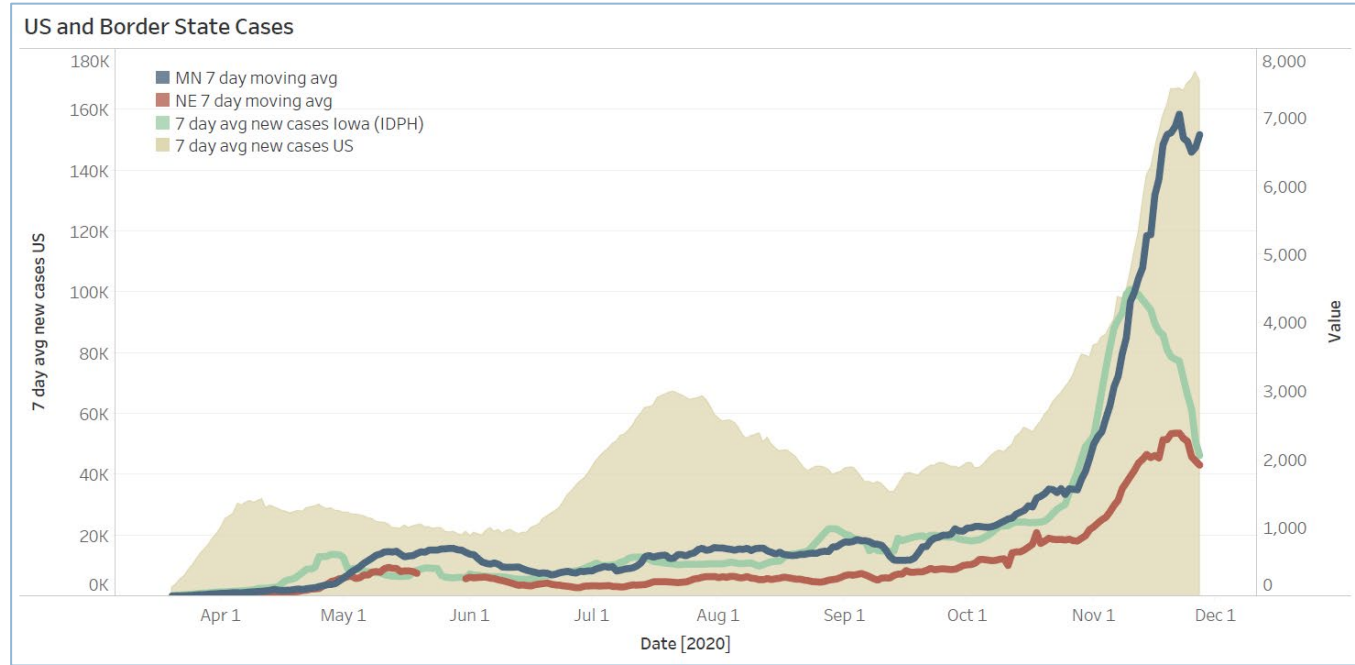
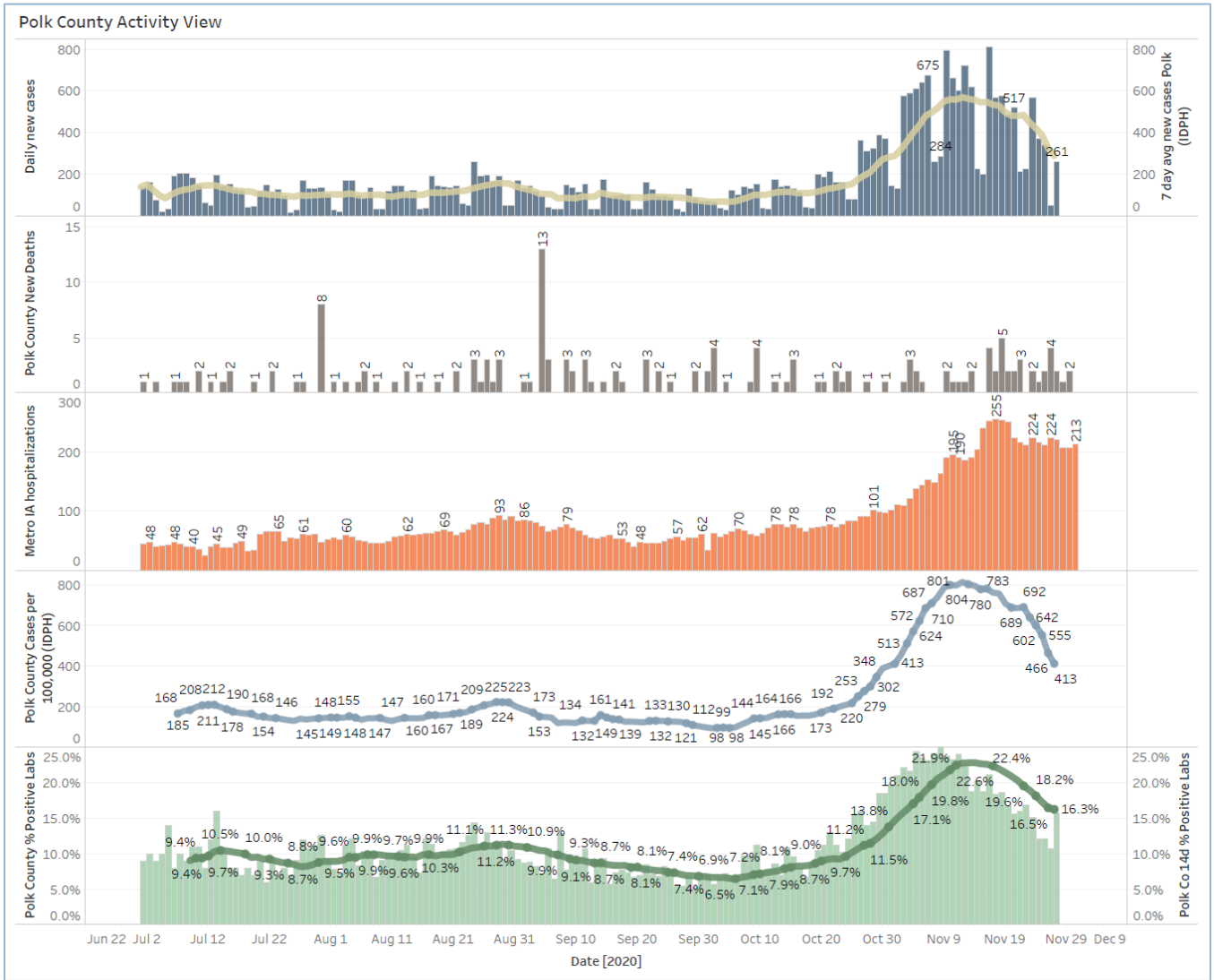
School Statistics – Polk County

New Student/Staff Cases					
Week Ending	1-Nov	8-Nov	15-Nov	22-Nov	29-Nov
DMPS*	5	15	15	18	5
Ankeny	46	46	52	52	54
Waukee	67	118	108	75	53
WDM	25	51	99	42	10
Johnston	44	58	73	50	38
SE Polk	33	35	58	55	54
Urbandale	7	8	43	34	23
DCG		19	33	30	42
Bondurant		18	17	29	29
North Polk		8	10	10	8
Ballard				14	1
Saydel		10	17	4	0
Total	227	331	525	413	317

Students/Staff in Quarantine					
Week Ending	1-Nov	8-Nov	15-Nov	22-Nov	29-Nov
DMPS*	N/A	N/A	N/A	N/A	N/A
Ankeny	225	225	370	370	273
Waukee	332	500	575	384	160
WDM	146	204	239	70	12
Johnston	586	667	527	318	286
SE Polk	186	211	307	380	401
Urbandale	39	97	180	223	179
DCG		80	159	216	82
Bondurant		148	160	167	138
North Polk		103	101	90	61
Ballard				77	7
Saydel		109	88	65	46
Total	1514	2344	2706	2360	1645

*DMPS combines student and staff cases

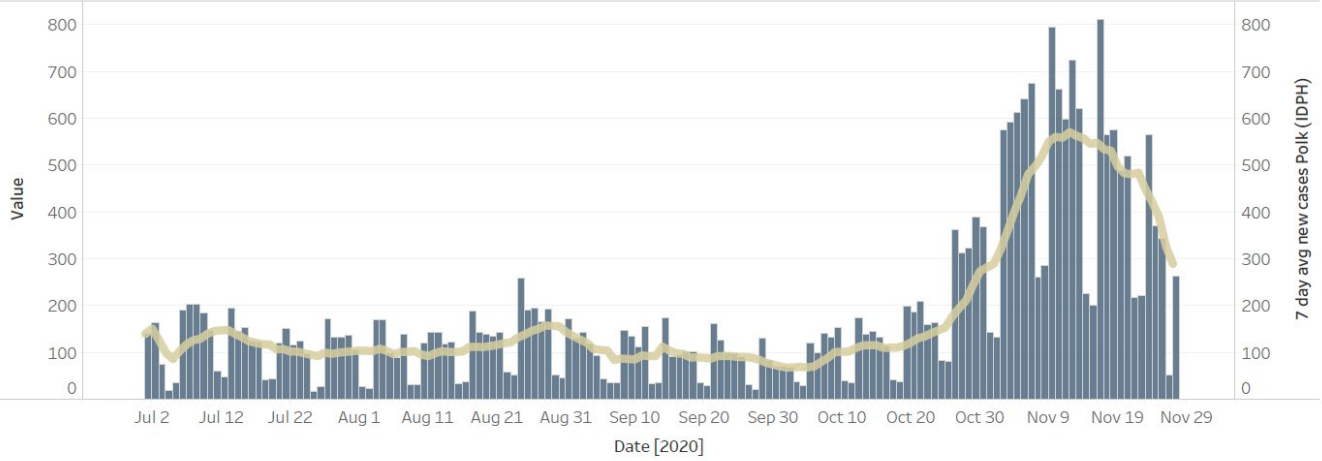
Central Iowa COVID19 Update



Central Iowa COVID19 Update



Polk County Cases by Day and 7d Moving Average



Iowa Cases by Day and 7d Moving Average

