

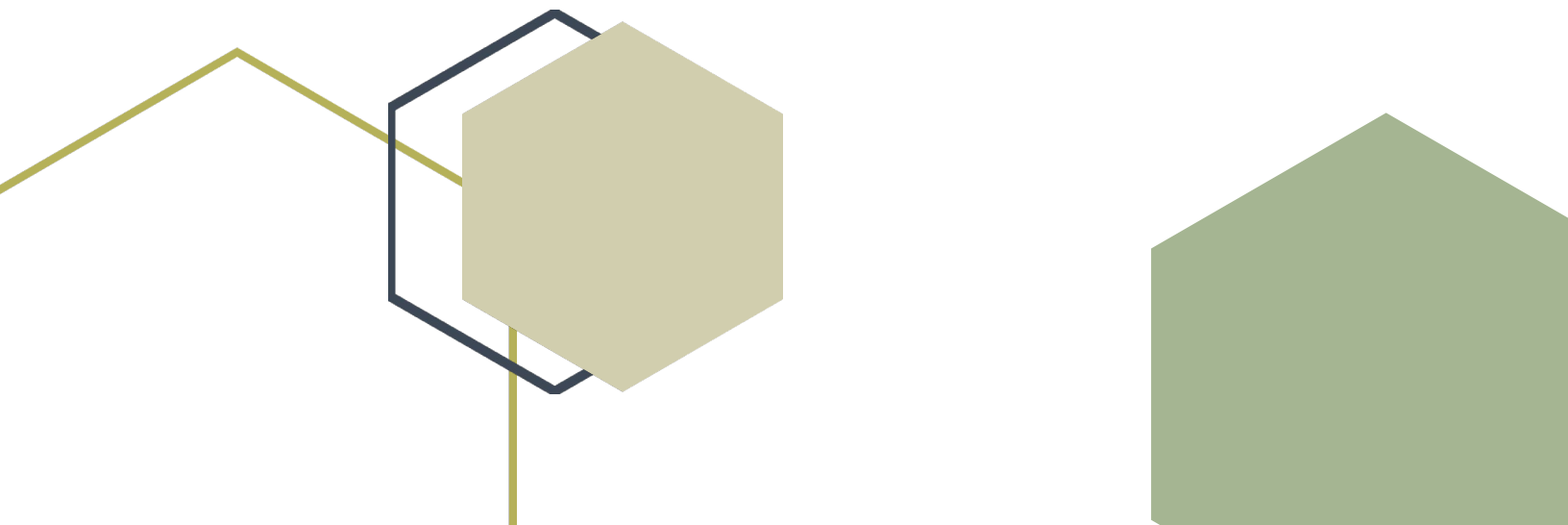
Central Iowa COVID19 Update

Wednesday, May 4, 2022



Statistical Consulting

Dr. Meg Schaeffer





Quick Stats

	Polk County	Next Highest Target**	Iowa
Community Metrics			
Percent of population with at least 1 dose*	74.3%		68%
Percent of population with fully vaccinated*	67.8%	85%	62%
Average daily cases the last 7d	66		387
CDC County Level**	Low	Med	NA
Total cases per 100,000 the last 7d**	94	>200	86
Healthcare Metrics			
Percent of staffed inpatient beds occupied by COVID-19 patients (7-day average)**	1.3%	10-14%	1.22%
New COVID-19 admissions per 100,000 population (7-day total)**	2.5	10-19.9	4.2
CDC Community Transmission Level (For Healthcare use)	Substantial	High	Substantial
<p>Notes: Community Metrics are defined by CDC and should be used to determine the impact of COVID-19 on communities and take action. Healthcare metrics are also defined by CDC and are used to assist healthcare providers in making planning and mitigation decisions.</p> <p>*Vaccine Information Iowa COVID-19 Information</p> <p>All data are sourced from Novel Coronavirus - COVID-19 Reporting (iowa.gov) with previous days refreshed weekly. The population of Polk County used is 490,161. Population of Iowa used is 3.155 million. Averages and percent positivity are subject to change with retrospectively refreshed data.</p> <p>**CDC COVID Data Tracker</p>			

Critical Points, Media, and Research

Iowa and Polk County COVID cases are rising. Average cases in Polk County are close to 70 newly confirmed per day; almost 400 per day for the state. New hospital admissions are up slightly.

CDC Community Transmission Level was added to the report this week as healthcare providers and systems adjust planning and mitigation strategies according to a more stringent metric. Community transmission is “Substantial” this week.

News & Research

- [Seroprevalence of Infection-Induced SARS-CoV-2 Antibodies — United States, September 2021–February 2022](#)
- [Provisional COVID-19 Age-Adjusted Death Rates, by Race and Ethnicity — United States](#)
- [Provisional Mortality Data — United States, 2021](#)
- [Hospitalizations of Children Aged 5–11 Years with Laboratory-Confirmed COVID-19](#)
- [Effectiveness of COVID-19 mRNA Vaccination in Preventing COVID-19–Associated Hospitalization Among Adults with Previous SARS-CoV-2 Infection — United States, June 2021–February 2022](#)
- [COVID-19 Mortality and Vaccine Coverage — Hong Kong Special Administrative Region, China, January 6, 2022–March 21, 2022](#)
- [Notes from the Field: SARS-CoV-2 Omicron Variant Infection in 10 Persons Within 90 Days of Previous SARS-CoV-2 Delta Variant Infection — Four States, October 2021–January 2022](#)
- [The Coronavirus Has Infected More Than Half of Americans, the C.D.C. Reports](#)
- [Iowa COVID-19 cases, hospitalizations are both up in weekly update \(desmoinesregister.com\)](#)
- [U.S. CDC says travelers should still wear masks on airplanes | Reuters](#)



Vaccine Progress

Polk Co Vaccination Rates CDC Covid Data Tracker Data (*)	At Least One Dose	Difference prev week	Fully Vaccinated	Difference prev week
Total	364,310	329	332,184	447
% of Total Population	74%	0.0%	68%	0.1%
Population ≥ 5 Years of Age	364,261	329	332,184	447
% of Population ≥ 5 Years of Age	80%	0.1%	73%	0.1%
Population ≥ 12 Years of Age	346,515	243	316,202	352
% of Population ≥ 12 Years of Age	85%	0.1%	77%	0.1%
Population ≥ 18 Years of Age	318,215	213	290,492	304
% of Population ≥ 18 Years of Age	86%	0.1%	79%	0.1%
Population ≥ 65 Years of Age	68,784	40	64,265	119
% of Population ≥ 65 Years of Age	95%	0.0%	95%	0.0%

(*) CDC COVID Data Tracker Data: CDC data includes vaccine administration data from all sources, including IRIS*, other state immunization registries, and federal entities (Bureau of Prisons, Veterans Health Administration, Department of Defense, and Federal Long-Term Care program). These doses may not have been reported to IRIS.

Link to Zip Code-Level Vaccination

Rates - <https://arcg.is/1nTry4>

Polk Co People Fully Vaccinated with a Booster (*)	Data	Difference prev week
Total	176,919	696
% of Fully Vaccinated Population with a Booster Dose	53%	0.2%
Fully Vaccinated Population ≥ 18 Years of Age with a Booster Dose	176,876	694
% of Fully Vaccinated Population ≥ 18 Years of Age with a Booster Dose	56%	0.1%
Fully Vaccinated Population ≥ 50 Years of Age with a Booster Dose	169,990	601
% of Fully Vaccinated Population ≥ 50 Years of Age with a Booster Dose	59%	0.1%
Fully Vaccinated Population ≥ 65 Years of Age with a Booster Dose	52,061	176
% of Fully Vaccinated Population ≥ 65 Years of Age with a Booster Dose	81%	0.1%

(*)The count of people who received a booster dose includes anyone who is fully vaccinated and has received another dose of COVID-19 vaccine since August 13, 2021. This includes people who received booster doses and people who received additional doses.

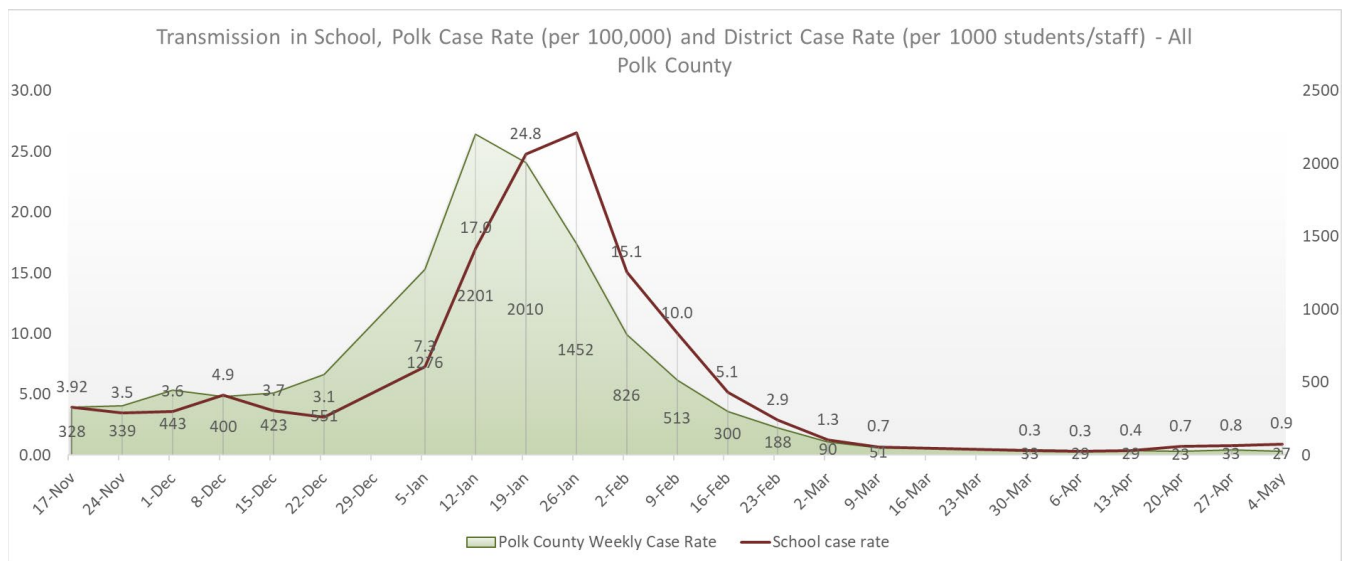
Central Iowa COVID19 Update



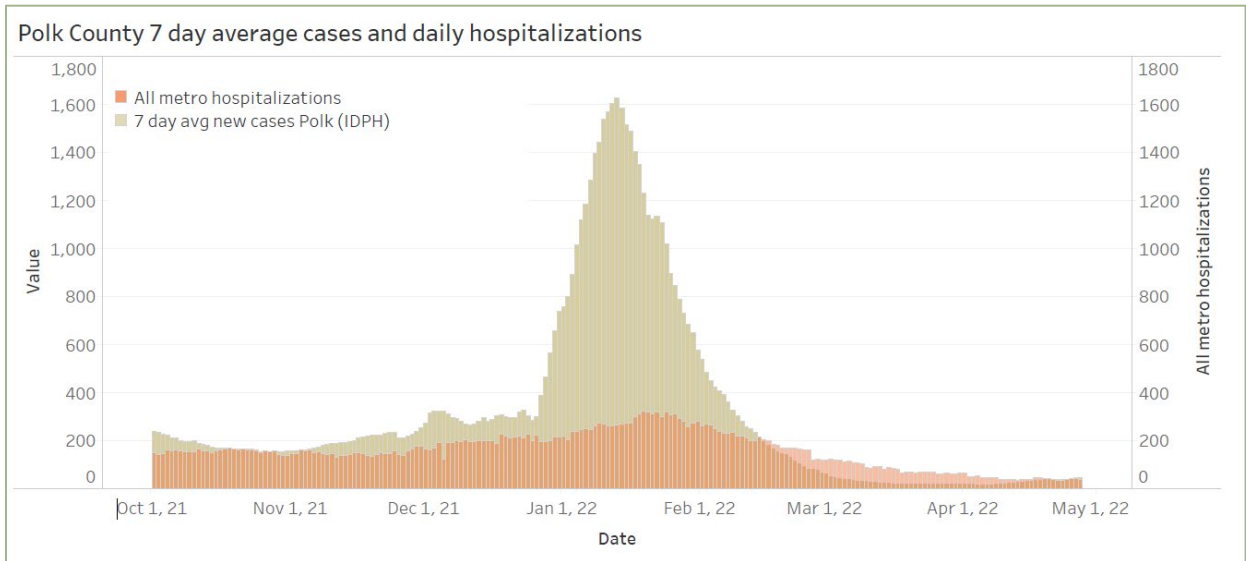
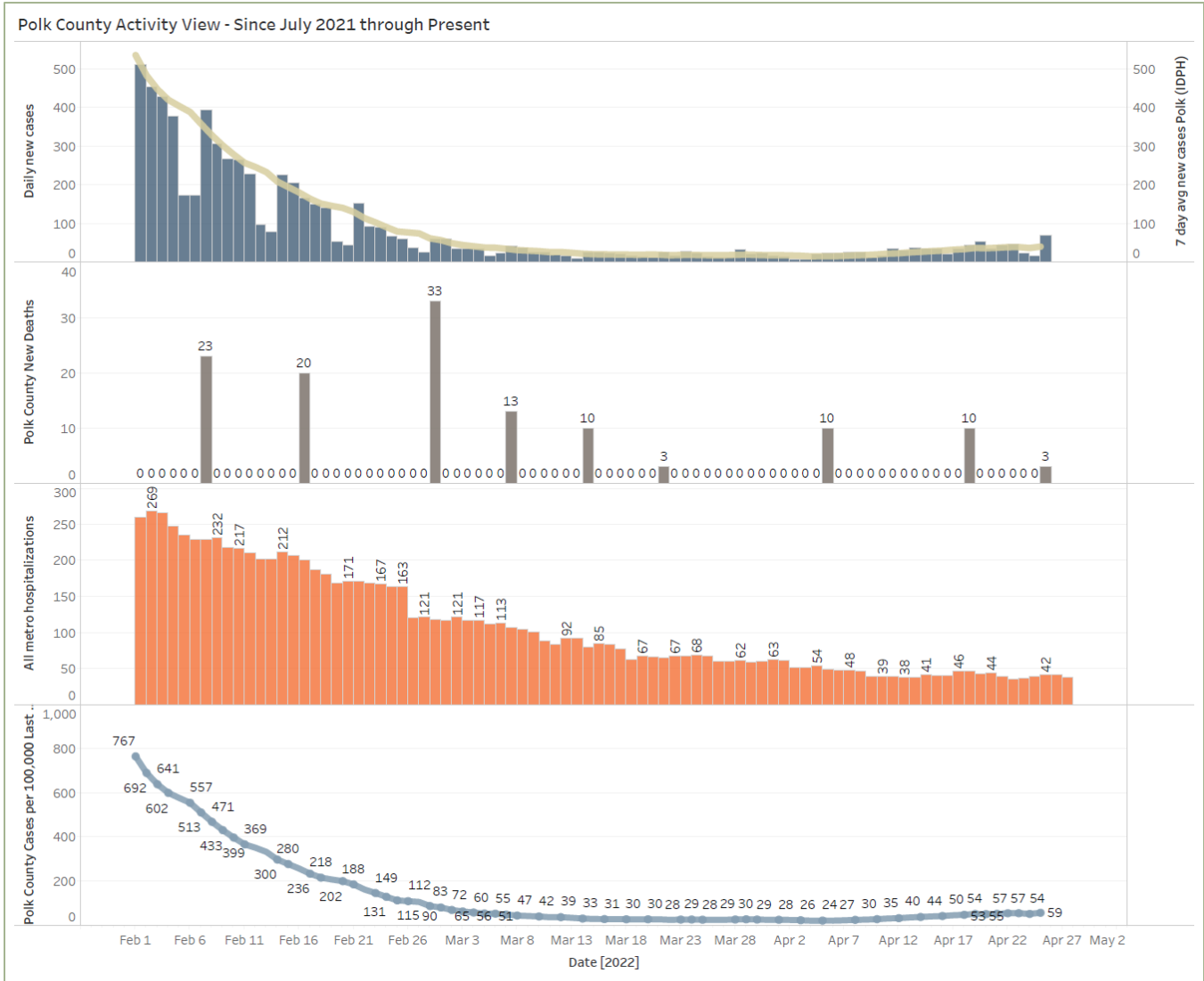
School Data

Week Ending	New Student/Staff Case Rates per 1000																					
	17-Nov	24-Nov	1-Dec	8-Dec	15-Dec	22-Dec	5-Jan	12-Jan	19-Jan	26-Jan	2-Feb	9-Feb	16-Feb	23-Feb	2-Mar	9-Mar	30-Mar	6-Apr	13-Apr	20-Apr	27-Apr	4-May
DMPs*	2.12	2.24	3.58	5.06	3.79	3.03	7.91	14.79	11.45	19.45	8.45	10.06	2.70	1.61	0.27	0.36	0.30	0.24	0.09	0.45	0.39	0.88
Ankeny	4.00	3.33	3.25	5.83	5.00	4.67	NA	18.42	32.08	40.58	24.83	18.33	6.42	3.42	1.92	0.50	0.17	0.17	0.17	0.67	0.67	1.17
Waukee	6.70	8.09	4.43	4.52	3.57	3.04	8.26	15.74	13.22	13.04	6.96	3.22	1.74	0.78	0.09	0.17	0.17	0.17	0.78	1.30	1.30	1.48
WDM	5.67	5.00	5.00	7.67	5.11	3.78	NA	19.67	31.67	33.44	26.11	11.56	9.11	3.33	3.33	1.22	0.22	0.56	0.22	1.00	2.00	1.44
Johnston	3.43	0.86	2.00	3.43	2.86	3.43	NA	8.29	24.57	36.29	8.71	10.29	2.14	2.86	1.71	0.86	0.29	0.14	0.29	0.29	0.29	0.29
SE Polk	2.29	3.14	4.14	5.29	2.86	1.71	1.86	13.29	14.71	11.57	10.29	4.86	2.14	1.00	0.29	0.43	0.00	0.00	0.14	0.14	0.14	0.43
Urbandale	3.25	4.25	3.00	3.75	1.75	2.75	11.00	29.00	46.00	31.50	20.00	12.00	11.75	7.00	1.25	1.25	1.25	0.75	1.00	1.00	0.75	0.75
School case rate	3.92	3.5	3.6	4.9	3.7	3.1	7.3	17.0	24.8	26.6	15.1	10.0	5.1	2.9	1.3	0.7	0.3	0.3	0.4	0.7	0.8	0.9

Week Ending	New Student/Staff Cases																					
	17-Nov	24-Nov	1-Dec	8-Dec	15-Dec	22-Dec	5-Jan	12-Jan	19-Jan	26-Jan	2-Feb	9-Feb	16-Feb	23-Feb	23-Feb	9-Mar	30-Mar	6-Apr	13-Apr	20-Apr	27-Apr	4-May
DMPs*	70	74	118	167	125	100	261	488	378	642	279	332	89	53	9	12	10	8	3	15	13	29
Ankeny	48	40	39	70	60	56	NA	221	385	487	298	220	77	41	23	6	2	2	2	8	8	14
Waukee	90	105	63	65	48	36	120	210	186	150	80	37	20	9	1	2	2	2	9	15	15	17
WDM	51	45	45	69	46	34	NA	177	285	301	235	104	82	30	30	11	2	5	2	9	18	13
Johnston	24	6	14	24	20	24	NA	72	208	254	61	72	15	20	12	6	2	1	2	2	2	2
SE Polk	16	22	29	37	20	12	13	93	103	81	72	34	15	7	2	3	0	0	1	1	1	3
Urbandale	13	17	12	15	7	11	44	116	184	126	80	48	47	28	5	5	5	3	4	4	3	3
Total School Cases	312	309	320	447	326	273	438	1377	1729	2041	1105	847	345	188	82	45	23	21	23	54	60	81
Polk Weekly Cases	1607	1663	2173	1959	2075	2698	6250	10783	9848	7116	4045	2514	1468	919	439	250	162	144	141	114	164	134
Polk County Weekly Case Rate	328	339	443	400	423	551	1276	2201	2010	1452	826	513	300	188	90	51	33	29	29	23	33	27



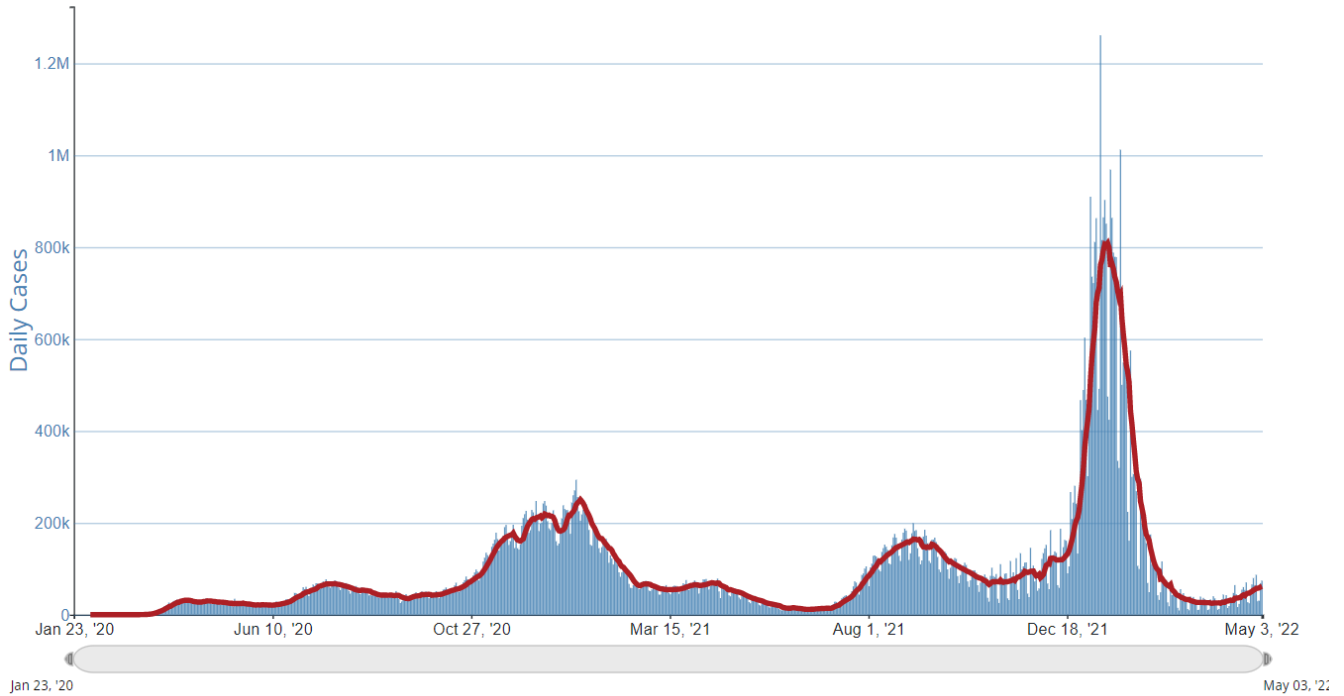
Central Iowa COVID19 Update



Central Iowa COVID19 Update



Daily Trends in Number of COVID-19 Cases in The United States Reported to CDC



	CASES DAILY AVG.	PER 100,000	14-DAY CHANGE	HOSPITALIZED DAILY AVG.	PER 100,000	14-DAY CHANGE	DEATHS DAILY AVG.	PER 100,000	FULLY VACCINATED
United States	62,428	19	+50%	17,532	5	+18%	339.7	0.1	66%
Puerto Rico ›	3,783	112	+185%	242	7	+76%	3.3	0.1	78%
American Samoa	39	80	-44%	3	6	-51%	2	4.05	84%
Rhode Island ›	531	50	+52%	66	6	+14%	0.4	0.04	83%
Vermont ›	311	50	+20%	57	9	+50%	1	0.16	81%
Maine ›	638	47	+89%	167	12	+49%	1.3	0.1	80%
Massachusetts ›	2,889	42	+35%	546	8	+43%	7.7	0.11	79%
New York ›	7,646	39	+26%	2,214	11	+36%	17.4	0.09	77%
Washington ›	2,540	33	+92%	581	8	+18%	4.1	0.05	73%
New Jersey ›	2,956	33	+48%	498	6	+10%	6.7	0.08	76%
Hawaii ›	456	32	+146%	75	5	+76%	1.6	0.11	78%