



Central Iowa COVID19 Update

Wednesday, December 16, 2020



Statistical Consulting

Dr. Meg Schaeffer





Quick Stats¹

	Polk County	Iowa
7d Lab Test Positivity	12.1%	10.7%
14d Lab Test Positivity	14.2%	14.0%
Total cases per 100,000 the last 7d	316	318
Total cases per 100,000 the last 14d	722	751
Average daily cases the last 7d	220	1433
Average 7-day new cases per 100,000	45	45

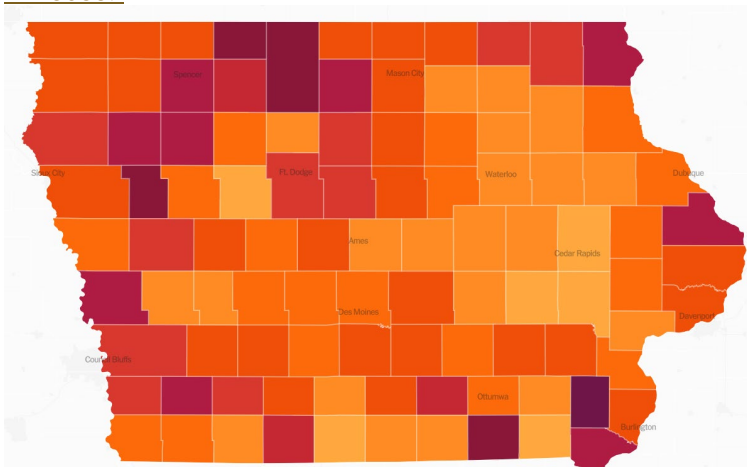
¹All data are sourced from <https://coronavirus.iowa.gov/pages/case-counts> with previous days refreshed daily. When recent data are unavailable, data from <https://github.com/nytimes/covid-19-data> may be used. Population of Polk County used is 490,161. Population of Iowa used is 3.155 million. Averages and percent positivity are subject to change with retrospectively refreshed data.

Critical Points, Media, and Research

- Polk County activity is remaining stable, but hospitalizations are projecting to increase after several days of rising inpatient counts.
- Flu activity remains minimal.
- The City of Des Moines adds new restrictions to emergency declaration. <https://www.kcci.com/article/des-moines-iowa-adds-new-restrictions-to-emergency-health-proclamation/34974813>
- Iowa Governor adjusts restrictions, bars and restaurants can resume regular hours. <https://ktiv.com/2020/12/16/watch-live-gov-reynolds-holds-news-conference-on-covid-19-in-iowa-6/>
- Stay-at-home mandates may benefit communities most as proactive rather than reactive measures for COVID-19 by shortening the duration to reaching peak daily case and death counts. <https://bmcpublichealth.biomedcentral.com/articles/10.1186/s12889-020-09817-9>

Vaccine

- The Trump administration is negotiating to buy more doses of the Pfizer vaccine. <https://news.yahoo.com/azar-says-trump-administration-negotiating-190700752.html>
- Who should and should not get the COVID-19 vaccine. <https://www.cnn.com/2020/12/16/health/who-should-and-shouldnt-get-covid-19-vaccine/index.html>
- US could return to normal by mid-fall if most people get the vaccine. <https://www.cnbc.com/2020/12/16/dr-fauci-says-us-could-return-to-normal-by-mid-fall-if-most-people-get-covid-vaccine.html>
- The Pfizer vaccine results in an estimated 50% effectiveness one week after the first dose. <https://www.nbcnews.com/health/health-news/fda-pfizer-s-covid-19-vaccine-safe-effective-after-one-n1250337>





School Statistics – Polk County (data updated weekly on Mondays)

New Student/Staff Cases						
Week Ending	1-Nov	8-Nov	15-Nov	22-Nov	29-Nov	13-Dec
DMPS*	5	15	15	18	5	22
Ankeny	46	46	52	52	54	39
Waukee	67	118	108	75	53	40
WDM	25	51	99	42	10	24
Johnston	44	58	73	50	38	16
SE Polk	33	35	58	55	54	21
Urbandale	7	8	43	34	23	14
DCG		19	33	30	42	15
Bondurant		18	17	29	29	8
North Polk		8	10	10	8	2
Ballard				14	1	2
Saydel		10	17	4	0	3
Total	227	331	525	413	317	206

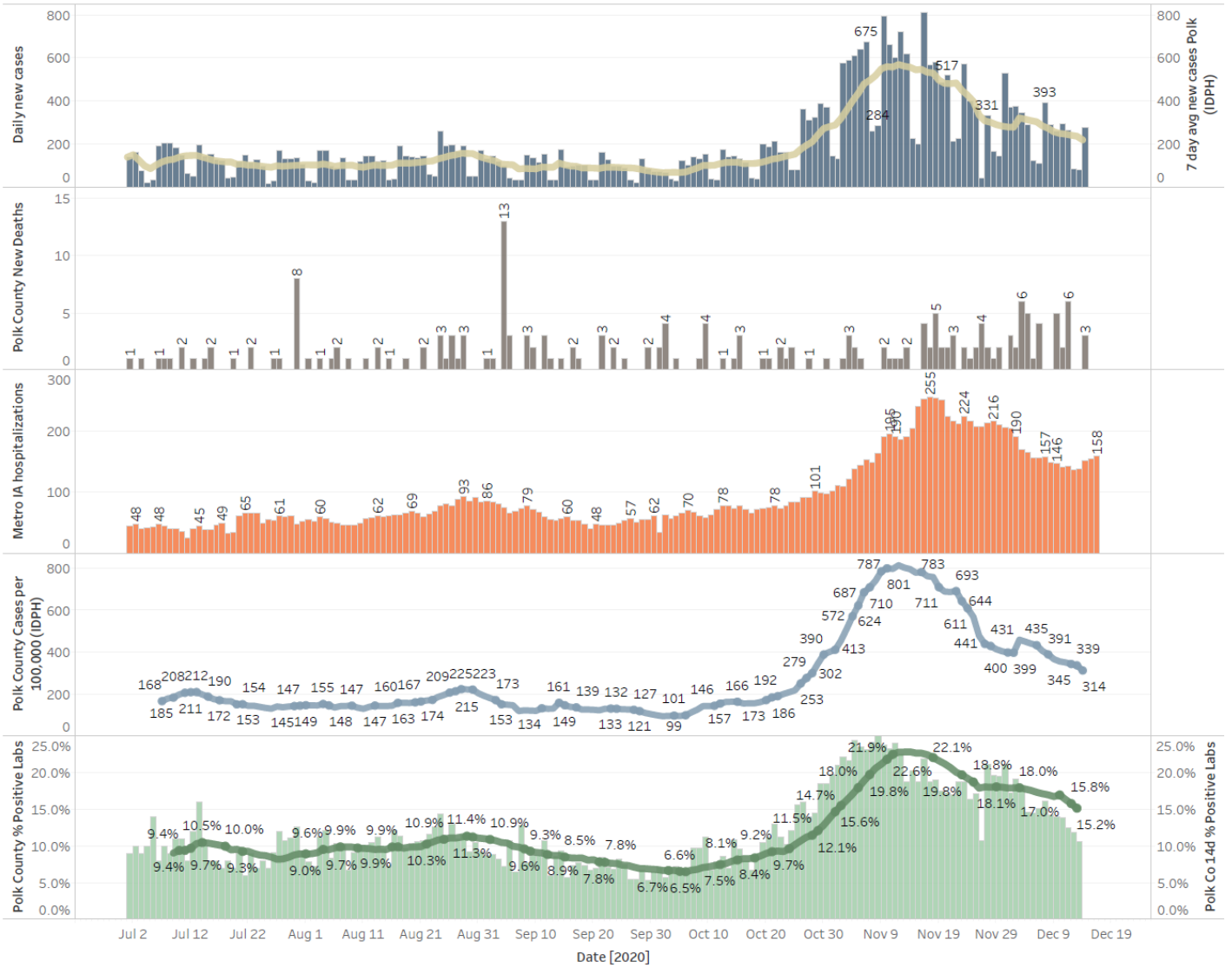
Students/Staff in Quarantine						
Week Ending	1-Nov	8-Nov	15-Nov	22-Nov	29-Nov	13-Dec
DMPS*	N/A	N/A	N/A	N/A	N/A	N/A
Ankeny	225	225	370	370	273	172
Waukee	332	500	575	384	160	76
WDM	146	204	239	70	12	38
Johnston	586	667	527	318	286	73
SE Polk	186	211	307	380	401	126
Urbandale	39	97	180	223	179	49
DCG		80	159	216	82	69
Bondurant		148	160	167	138	97
North Polk		103	101	90	61	55
Ballard				77	40	34
Saydel		109	88	65	46	30
Total	1514	2344	2706	2360	1678	819

*DMPS does not report quarantined students; DMPS also reports cases only daily

Central Iowa COVID19 Update



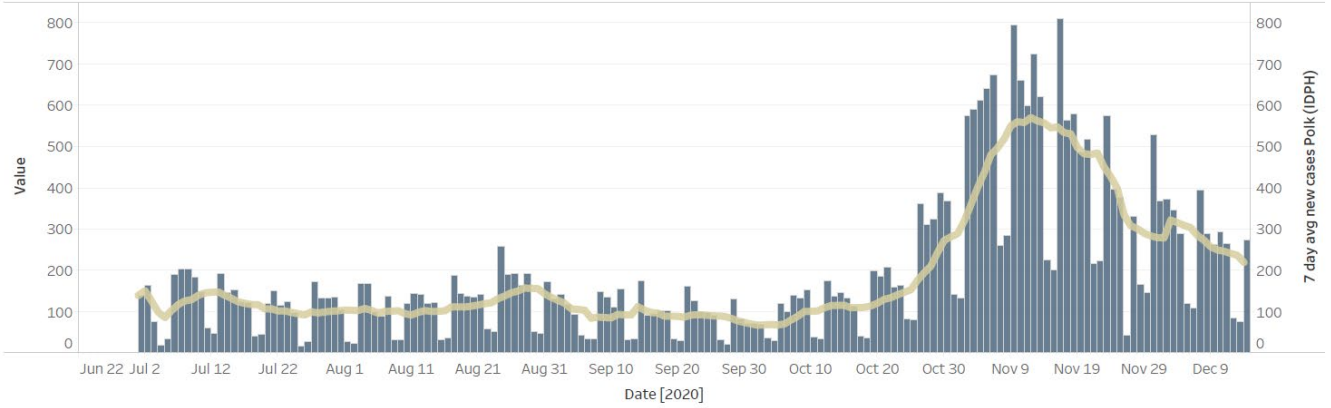
Polk County Activity View



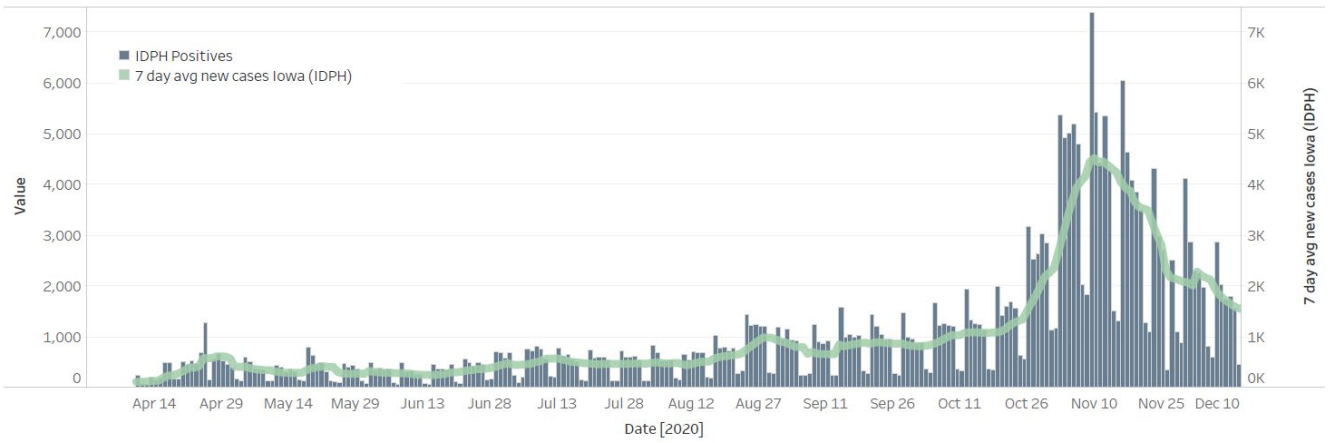
Central Iowa COVID19 Update



Polk County Cases by Day and 7d Moving Average



Iowa Cases by Day and 7d Moving Average



Central Iowa COVID19 Update

