



Central Iowa COVID19 Update

Monday, September 28, 2020



Aperio

Statistical Consulting

Dr. Meg Schaeffer





Central Iowa COVID19 Update

Quick Stats¹

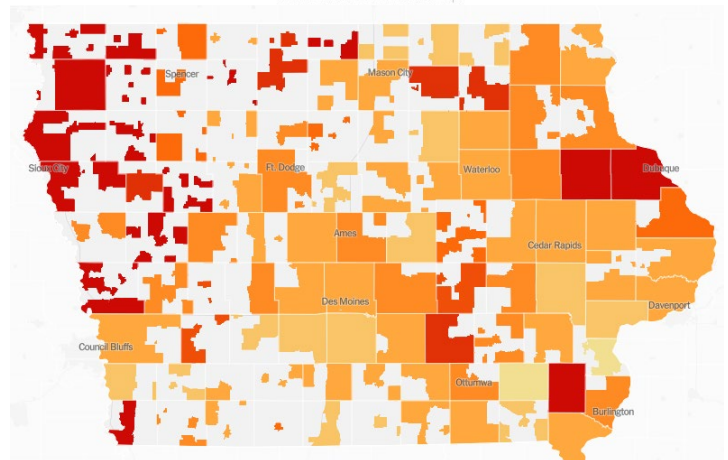
	Polk County	Iowa
7d Lab Test Positivity	6%	8%
14d Lab Test Positivity	6%	9%
Total cases per 100,000	117	157
Average daily cases the last 7d	81	888
Average 7-day new cases per 100,000	17	22

¹All data are sourced from <https://coronavirus.iowa.gov/pages/case-counts> with previous days refreshed daily. When recent data are unavailable, data from <https://github.com/nytimes/covid-19-data> may be used. Population used is 490,161. Averages and percent positivity are subject to change with retrospectively refreshed data.

Critical Points

- Polk County is holding onto stable case rates with an average of 80 new per day. The surge in Iowa is attributed to activity in Western Iowa.
- Iowa is still among the states with the highest number of cases per capita.

	TOTAL CASES	PER 100,000	CASES IN LAST 7 DAYS	PER 100,000	WEEKLY CASES PER CAPITA
					FEWER MORE
+ North Dakota MAP »	20,986	2,754	2,766	363	
+ South Dakota MAP »	21,738	2,457	2,845	322	
+ Wisconsin MAP »	124,266	2,134	15,155	280	
+ Utah MAP »	71,442	2,228	6,843	213	
+ Iowa MAP »	86,993	2,757	6,214	197	
+ Oklahoma MAP »	85,194	2,153	7,526	190	
+ Arkansas MAP »	82,049	2,719	5,519	183	
+ Missouri MAP »	126,190	2,056	10,998	179	
+ Montana MAP »	12,538	1,173	1,801	169	
+ Texas MAP »	771,333	2,660	48,079	166	

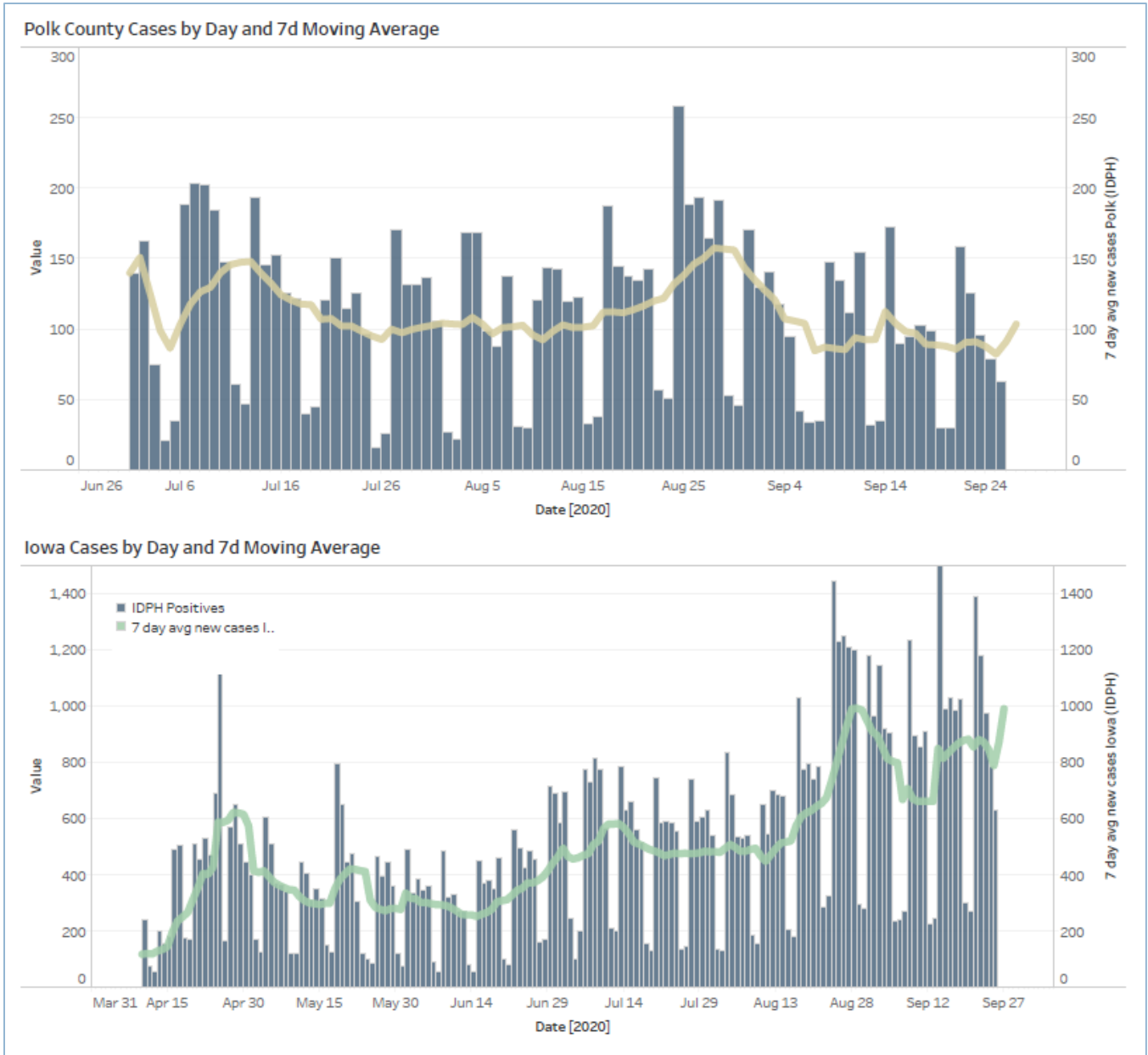


NYT US Activity

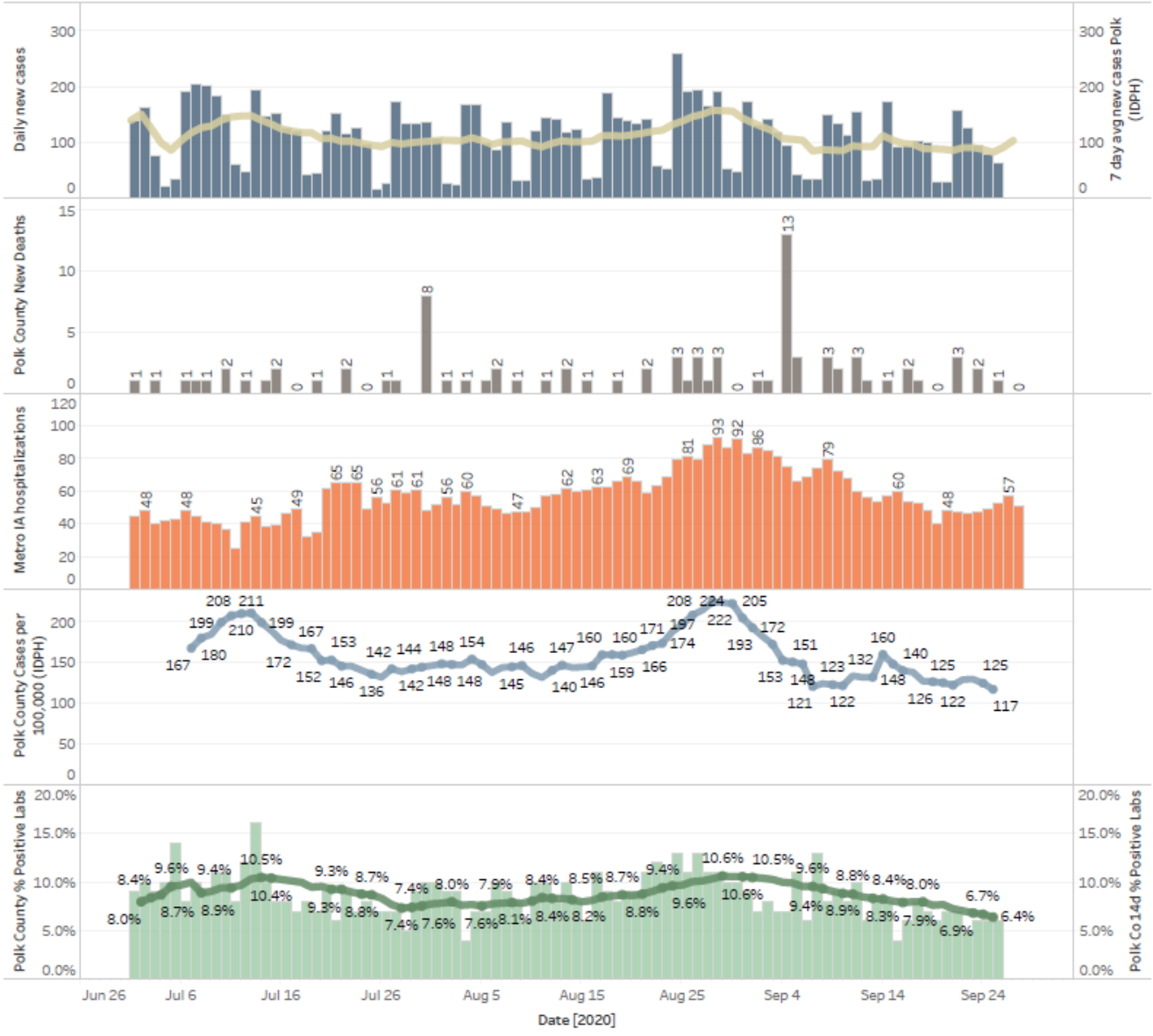
Research & Media

- Only 10 states are seeing a downward trend in cases and NYC now has a surge.
- <https://www.cnn.com/2020/09/28/health/us-coronavirus-monday/index.html>
- Between March and early September, 277,285 COVID-19 cases were reported in children. COVID-19 incidence among adolescents aged 12-17 years was twice that in children aged 5-11 years. Underlying health conditions were more common among school-aged children with severe outcomes compared to those without underlying conditions.
- [MMWR link](#)
- A study reviewing 121 COVID-19-associated deaths among persons <21 years old found most occurred in adolescents aged 12-17 years (70%), only 10% were infants, and 78% were Hispanic, Black, or American Indian.
- [MMWR link](#)
- A Lancet study of more than 28,000 patients of over 1300 dialysis centers across the US found only 10% had antibodies against COVID-19.
- [https://www.thelancet.com/journals/lancet/article/PIIS0140-6736\(20\)32009-2/fulltext](https://www.thelancet.com/journals/lancet/article/PIIS0140-6736(20)32009-2/fulltext)

Central Iowa COVID19 Update



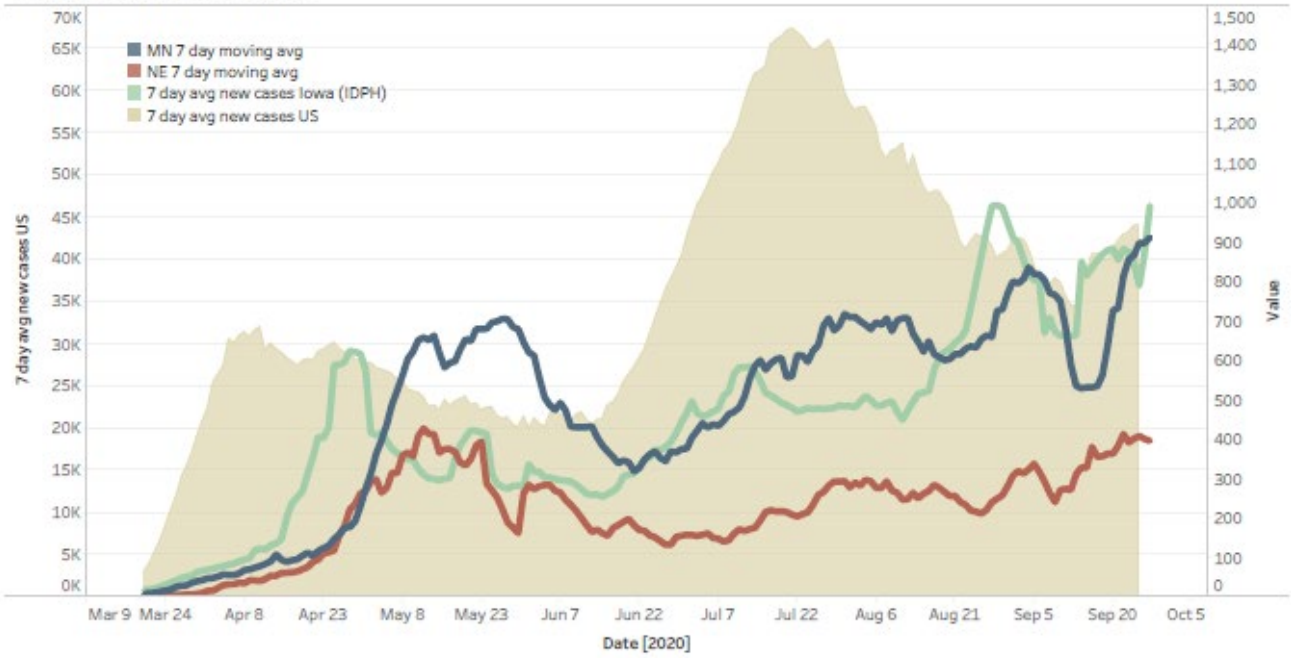
Polk County Activity View



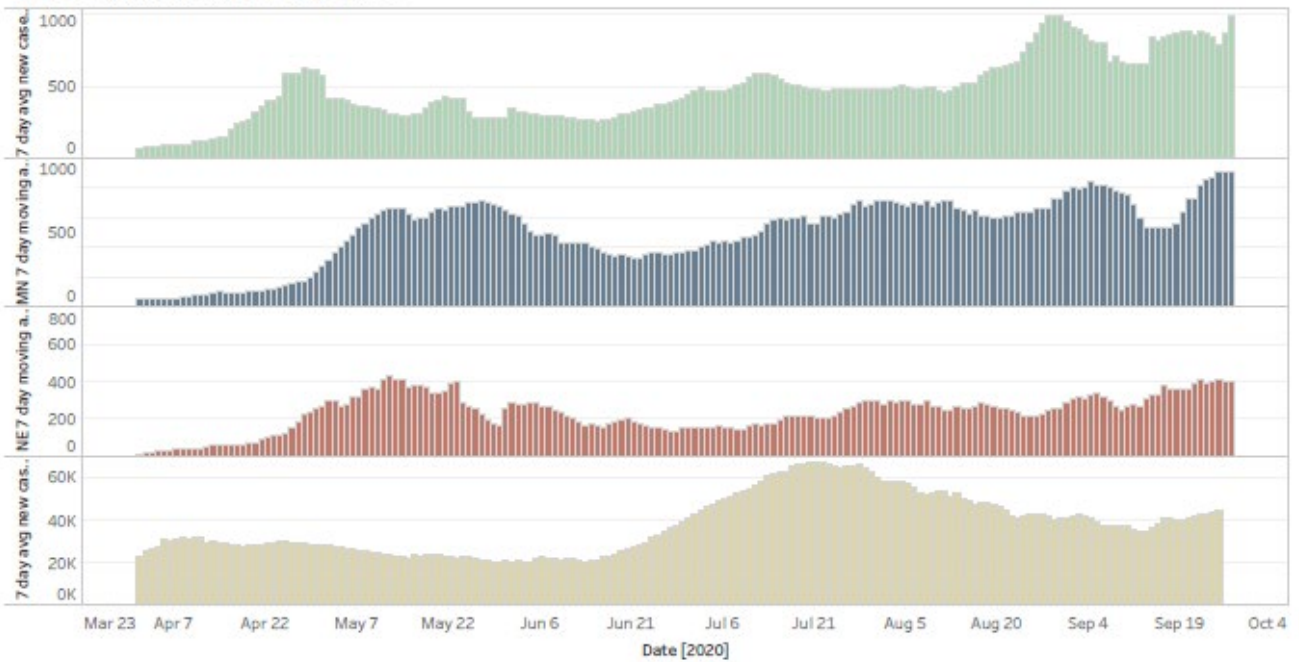
Central Iowa COVID19 Update



US and Border State Cases

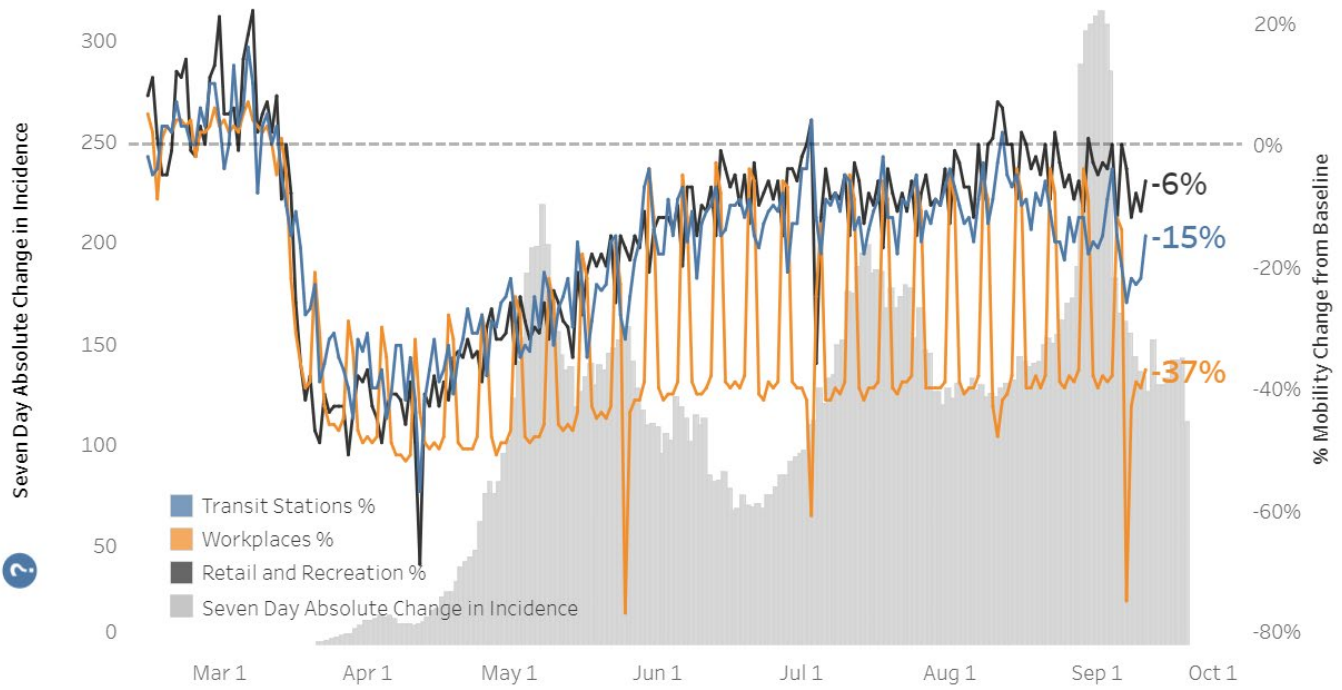


US, Iowa, MN, NE New Daily Cases





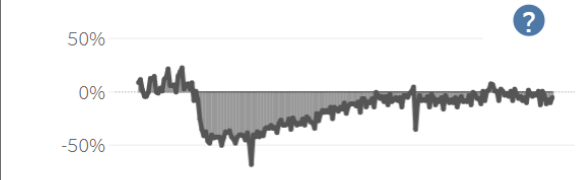
Polk County, IA



WORKPLACES
-37%



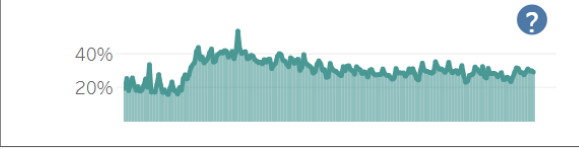
RETAIL AND RECREATION
-6%



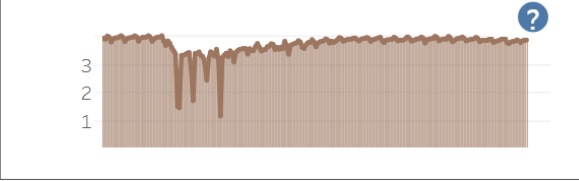
TRANSIT STATIONS
-15%



% AT HOME
29%



MOBILITY INDEX
3.9



<https://covid.cdc.gov/covid-data-tracker/#mobility>