



# Central Iowa COVID19 Update

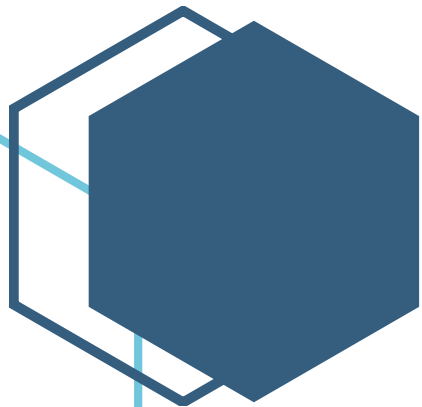
---

Monday, November 16, 2020



Statistical Consulting

Dr. Meg Schaeffer





## Quick Stats<sup>1</sup>

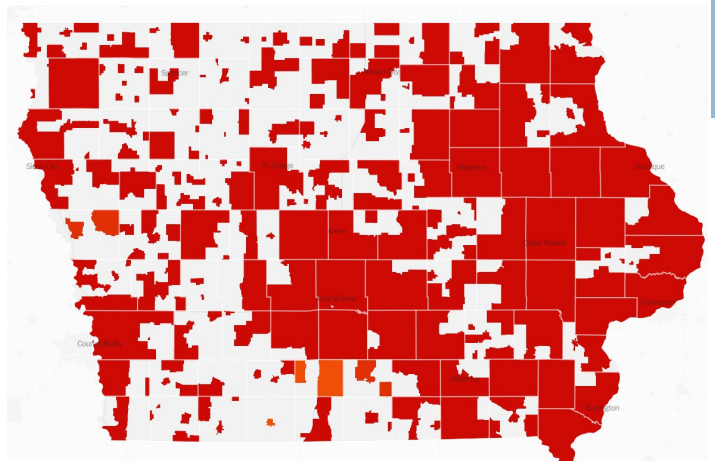
	Polk County	Iowa
7d Lab Test Positivity	19.9%	22.3%
14d Lab Test Positivity	20.9%	23.2%
Total cases per 100,000 the last 7d	759	893
Total cases per 100,000 the last 14d	1443	1748
Average daily cases the last 7d	531	4024
Average 7-day new cases per 100,000	108	128

<sup>1</sup>All data are sourced from <https://coronavirus.iowa.gov/pages/case-counts> with previous days refreshed daily. When recent data are unavailable, data from <https://github.com/nytimes/covid-19-data> may be used. Population of Polk County used is 490,161. Population of Iowa used is 3.155 million. Averages and percent positivity are subject to change with retrospectively refreshed data.

## Critical Points, Media, and Research

- Cases in Polk County and Iowa remain extremely high. The rate of cases per population are still third highest in the country. Polk County is averaging more than 500 new cases per day; Iowa over 4,000.
- The rate of increase over the past 14 days has slowed closer to that of the rest of the country.
- Hospitalizations are exceptionally high straining metro facilities and ICU capacity.
- Mask wearing by both those who are potentially transmitting infection *and* by those uninfected appears to provide the most protection from SARS-CoV-2, with surgical masks providing slightly better protection than cotton masks. <https://msphere.asm.org/content/5/5/e00637-20/article-info>
- Based on the prevalence of risk factors such as obesity, hypertension, diabetes mellitus, chronic kidney disease, or chronic obstructive pulmonary disorder, >75% of Americans are at risk of severe COVID-19. <https://link.springer.com/article/10.1007/s11606-020-06325-9>
- Governor Reynolds issues broad restrictions aimed at reducing COVID-19 spread. <https://www.desmoinesregister.com/story/sports/2020/11/16/iowa-gov-kim-reynolds-fans-required-wear-face-masks-high-school-sports-covid-19-ihsaa/6319967002/>
- Moderna's early vaccine efficacy is above 94%. Moderna is expected to have at least 20 million doses by the end of the year. Their vaccine has three advantages over Pfizer's – its ability to remain at room temperature longer, a shelf life of 30 days, and cold chain requirements of -4°F. <https://www.nytimes.com/2020/11/16/health/Covid-moderna-vaccine.html?action=click&module=Top%20Stories&pgtype=Homepage>
- Early Pfizer vaccine data shows >90% efficacy. Pfizer indicated they will apply for Emergency Use Authorization at the end of November, after which the FDA will take several weeks to review safety data before issuing a decision. Pfizer estimates 15-20 million doses will be available by the end of the year, with each recipient requiring two doses. <https://apnews.com/article/pfizer-vaccine-effective-early-data-4f4ae2e3bad122d17742be22a2240ae8>

	TOTAL CASES	PER 100,000	DAILY AVG. IN LAST 7 DAYS	▼ PER 100,000	WEEKLY CASES PER CAPITA FEWER MORE March 1 Nov. 15
+ North Dakota MAP »	64,891	8,515	1,356	177.9	
+ South Dakota MAP »	66,278	7,492	1,425.3	161.1	
+ Iowa MAP »	187,056	5,929	4,390.1	139.1	
+ Wyoming MAP »	22,494	3,887	740.6	128	
+ Wisconsin MAP »	329,932	5,667	6,859.1	117.8	
+ Minnesota MAP »	231,074	4,097	6,103	108.2	
+ Nebraska MAP »	98,161	5,074	2,027.4	104.8	
+ Montana MAP »	47,485	4,443	1,068.4	100	
+ Illinois MAP »	586,069	4,625	12,248.9	96.7	
+ Utah MAP »	153,808	4,798	3,026.7	94.4	





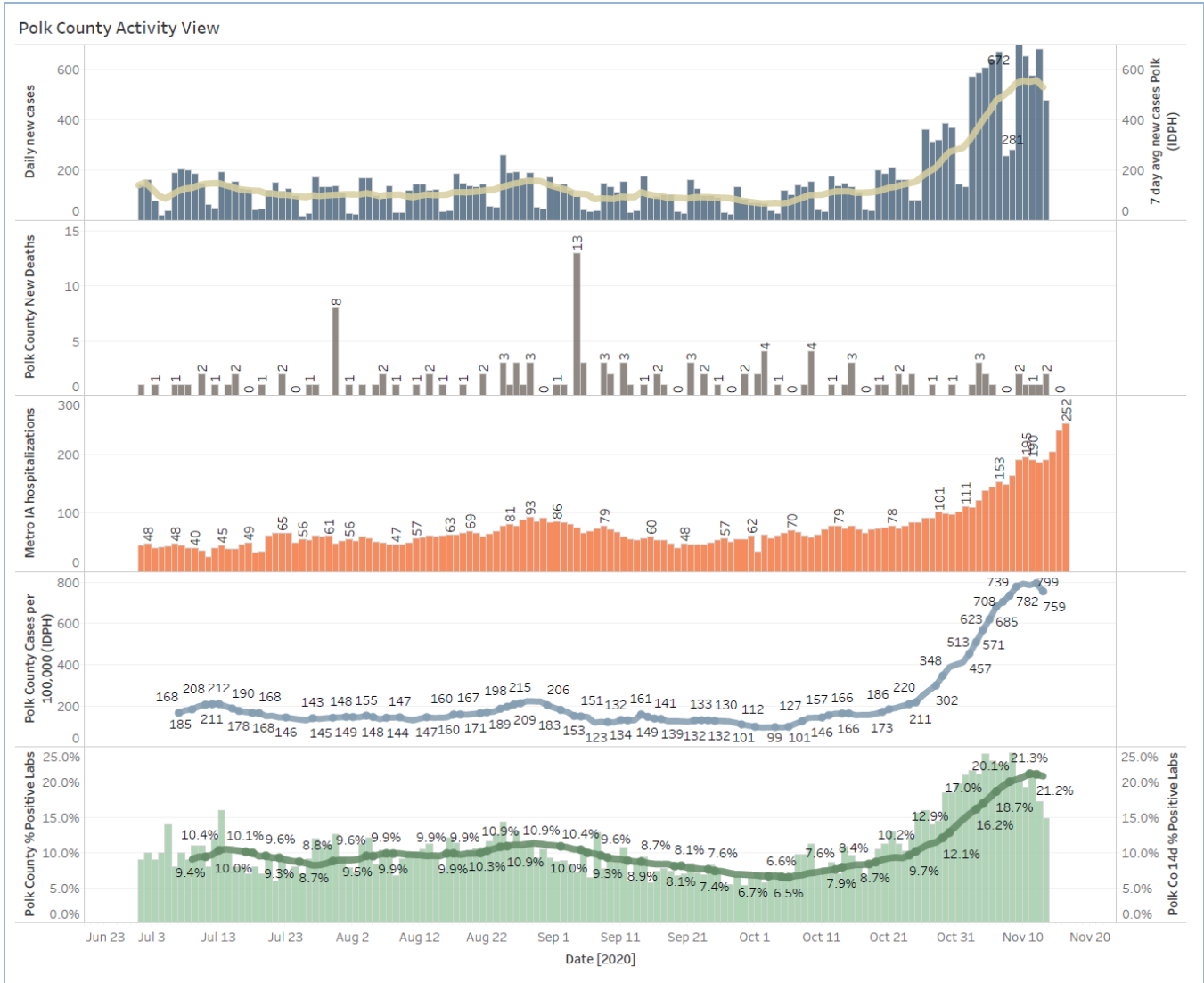
## School Statistics – Polk County

<b>New Student/Staff Cases</b>			
<b>Week Ending</b>	<b>1-Nov</b>	<b>8-Nov</b>	<b>15-Nov</b>
DMPs*	5	15	15
Ankeny	46	46	52
Waukee	67	118	108
WDM	25	51	99
Johnston	44	58	73
SE Polk	33	35	58
Urbandale	7	8	43
DCG		19	33
Bondurant		18	17
North Polk		8	10
Saydel		10	17
Total	227	331	525

<b>Students/Staff in Quarantine</b>			
<b>Week Ending</b>	<b>1-Nov</b>	<b>8-Nov</b>	<b>15-Nov</b>
DMPs*	N/A	N/A	N/A
Ankeny	225	225	370
Waukee	332	500	575
WDM	146	204	239
Johnston	586	667	527
SE Polk	186	211	307
Urbandale	39	97	180
DCG		80	159
Bondurant		148	160
North Polk		103	101
Saydel		109	88
Total	1514	2344	2706

\*DMPs combines student and staff cases

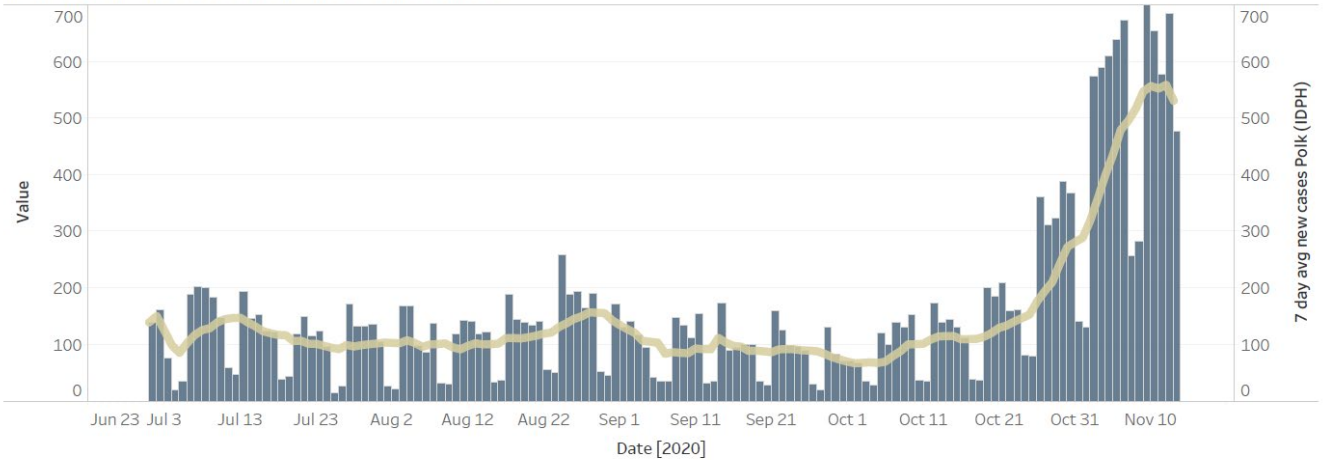
# Central Iowa COVID19 Update



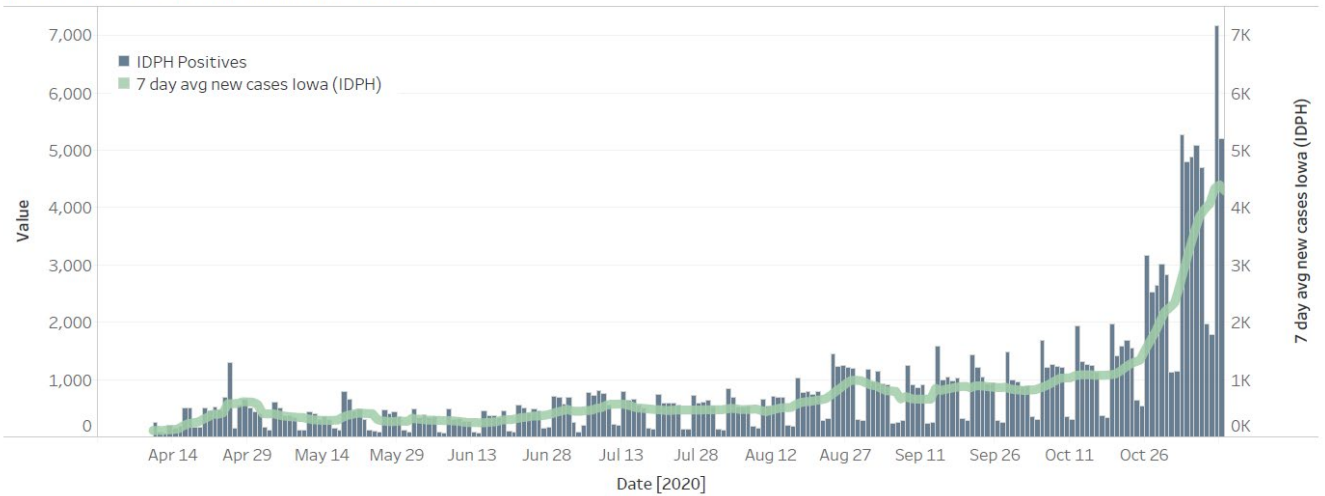
# Central Iowa COVID19 Update



### Polk County Cases by Day and 7d Moving Average



### Iowa Cases by Day and 7d Moving Average



### US and Border State Cases

