



Central Iowa COVID19 Update

Monday, January 11, 2021



Aperio

Statistical Consulting

Dr. Meg Schaeffer





Quick Stats¹

	Polk County	Iowa
7d Lab Test Positivity	13.7%	12.0%
14d Lab Test Positivity	15.2%	14.7%
Total cases per 100,000 the last 7d	372	344
Total cases per 100,000 the last 14d	417	656
Average daily cases the last 7d	292	1622
Average 7-day new cases per 100,000	60	51

¹All data are sourced from <https://coronavirus.iowa.gov/pages/case-counts> with previous days refreshed daily. When recent data are unavailable, data from <https://github.com/nytimes/covid-19-data> may be used. Population of Polk County used is 490,161. Population of Iowa used is 3.155 million. Averages and percent positivity are subject to change with retrospectively refreshed data.

Critical Points, Media, and Research

- Polk County is experiencing another significant surge. This surge is expected to reach the peak of the previous surge in approximately 14 days. Hospitalizations have stabilized, though will likely increase within days.
- A higher than usual percentage of cases are among those 0-17 years. School student cases are similar to the rate experienced in early Nov.
- Average new cases per day in Polk County are at almost 300; the state is above 1600.
- Influenza activity remains extremely low. <https://idph.iowa.gov/influenza/reports>
- Influenza activity was at an all-time low in Australia in 2020. Restrictions implemented for COVID-19 may have substantially reduced transmission of influenza and potentially other respiratory pathogens. [Eurosurveillance | Where has all the influenza gone? The impact of COVID-19 on the circulation of influenza and other respiratory viruses, Australia, March to September 2020](#)
- Study looking at the half-life of SARS-CoV-2, showing longer survival in cold temperatures and shorter survival at higher humidity. [Mechanistic theory predicts the effects of temperature and humidity on inactivation of SARS-CoV-2 and other enveloped viruses | bioRxiv](#)
- Rates of depressive and anxiety symptoms were highest at the beginning of pandemic lockdown and steadily decreased over a 20-week period. Symptoms were highest among women, persons who had lower income or education levels, or who lived alone with children during the early lockdown period. Disparities declined over time but were still evident at 20 weeks. [Trajectories of anxiety and depressive symptoms during enforced isolation due to COVID-19 in England: a longitudinal observational study - The Lancet Psychiatry](#)
- [CDC Library: COVID-19 Science Update: 12/22/2020](#)

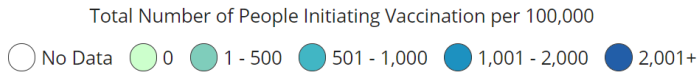
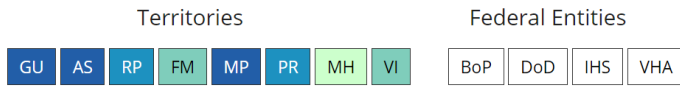
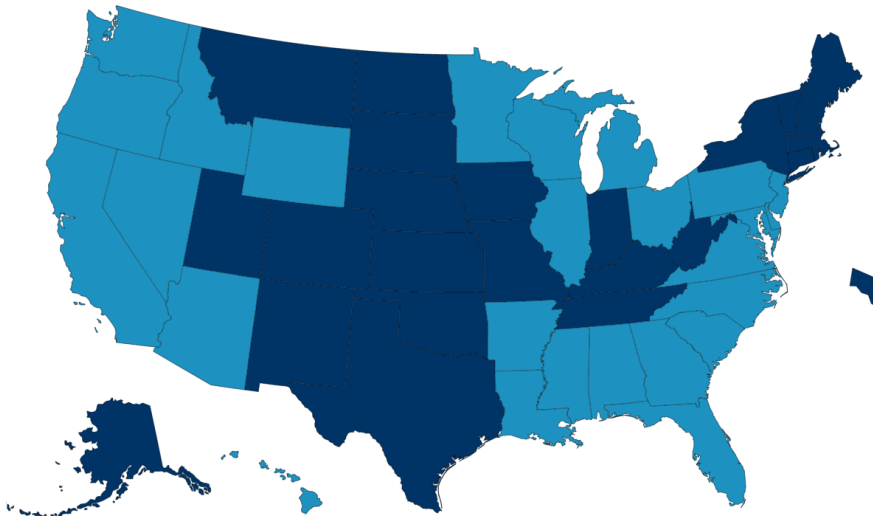
Vaccine

- From April to December 2020, the percentage of persons who stated they were somewhat or very likely to get vaccinated declined from 74% to 56% in the US. [National Trends in the US Public's Likelihood of Getting a COVID-19 Vaccine—April 1 to December 8, 2020 | Infectious Diseases | JAMA | JAMA Network](#)
- Vaccination progress in the US. [CDC COVID Data Tracker](#)
- Safety and efficacy of the Pfizer vaccine. [Safety and Efficacy of the BNT162b2 mRNA Covid-19 Vaccine | NEJM](#)
- Safety and efficacy of the Moderna vaccine. [Efficacy and Safety of the mRNA-1273 SARS-CoV-2 Vaccine | NEJM](#)

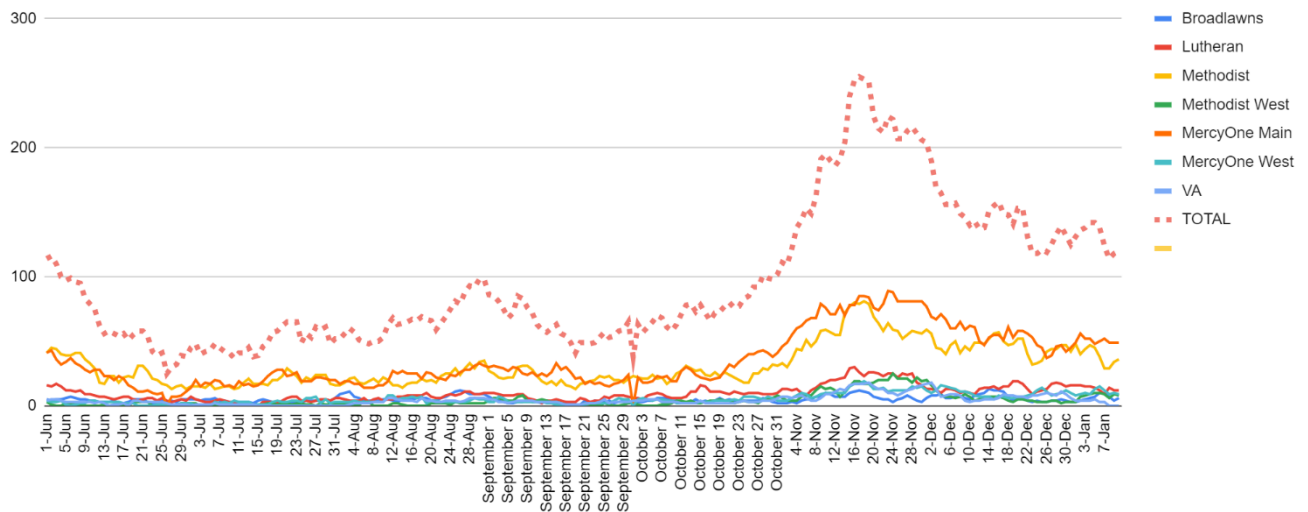


Vaccination Progress

Total Number of People Initiating Vaccination (1st Dose Received) Reported to the CDC by State/Territory and for Selected Federal Entities per 100,000



Metro Hospitalizations by Hospital and Total, YTD



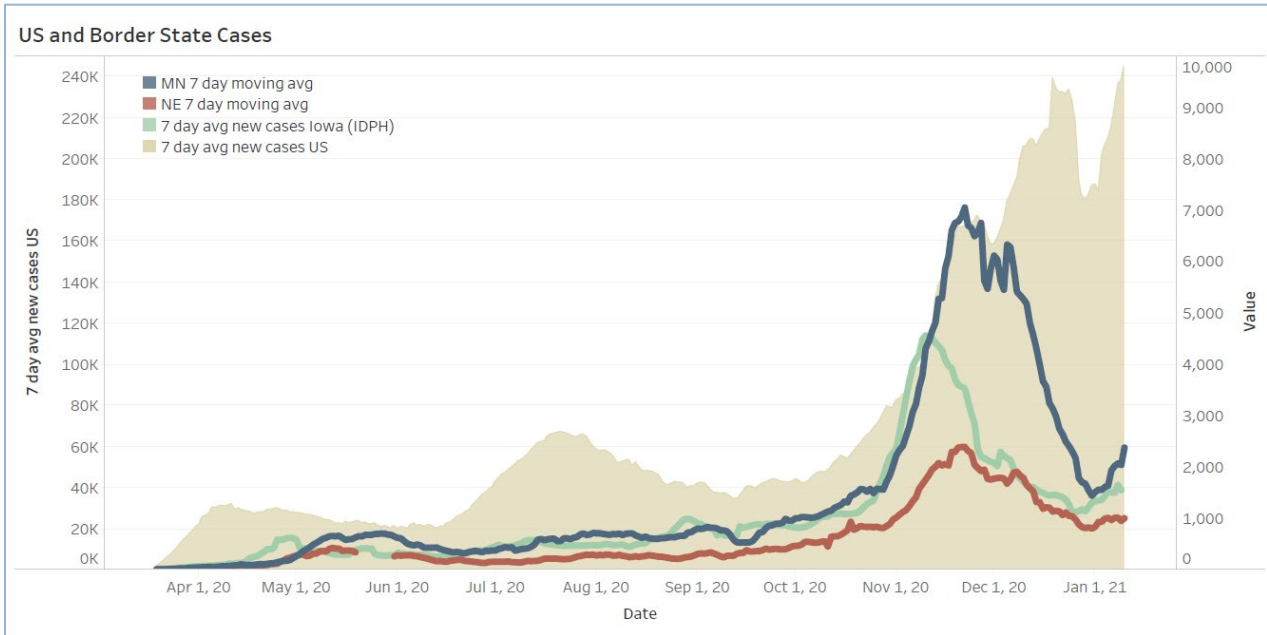
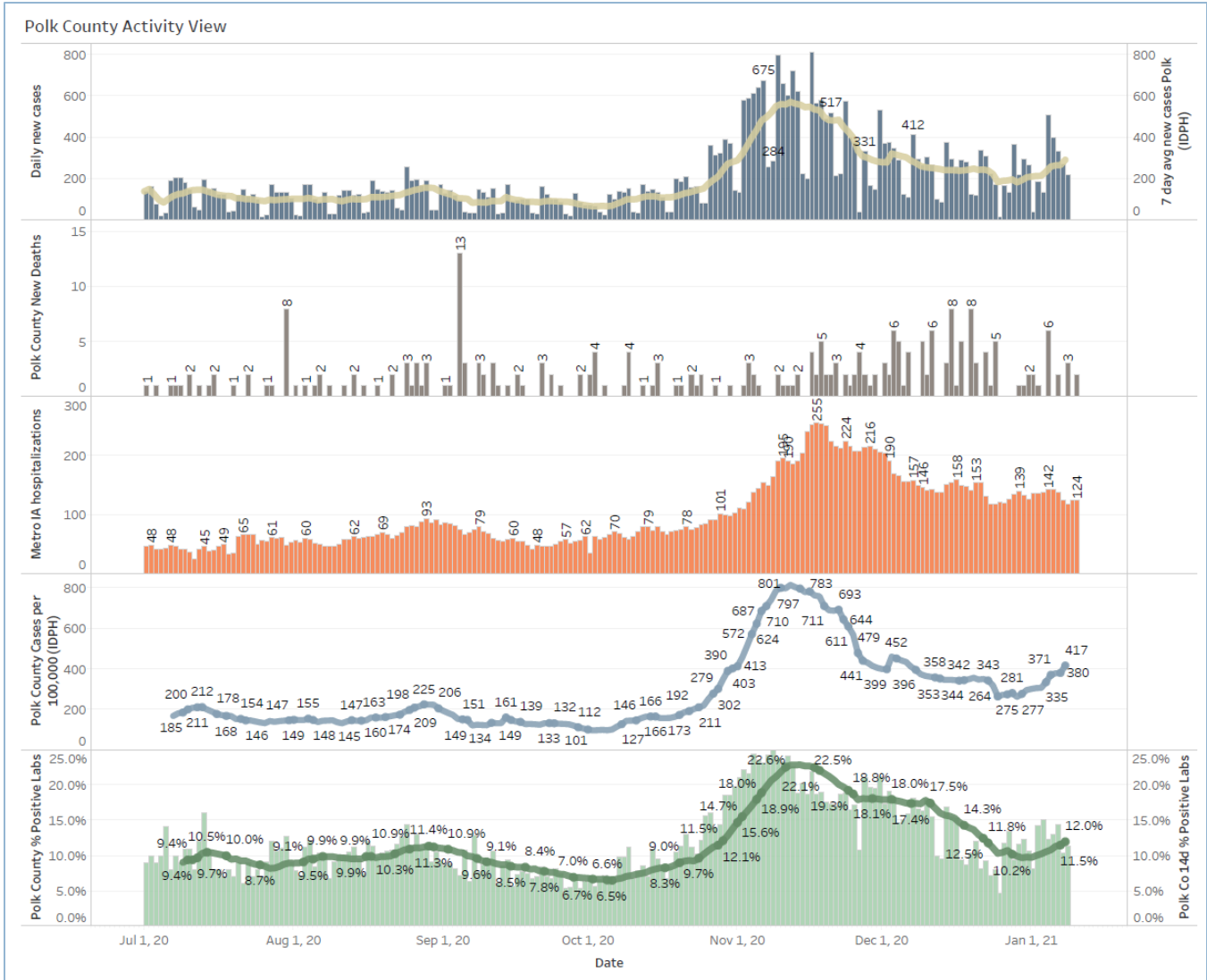


School Statistics – Polk County

New Student/Staff Cases									
Week Ending	1-Nov	8-Nov	15-Nov	22-Nov	29-Nov	13-Dec	20-Dec	27-Dec	11-Jan
DMPS*	5	131	15	18	5	22	24	12	131
Ankeny	46	46	52	52	54	39	23	22	71
Waukee	67	118	108	75	53	40	19	20	52
WDM	25	51	99	42	10	24	17	5	36
Johnston	44	58	73	50	38	16	12	2	32
SE Polk	33	35	58	55	54	21	32	19	24
Urbandale	7	8	43	34	23	14	14	8	24
DCG		19	33	30	42	15	3	9	7
Bondurant		18	17	29	29	8	6	16	0
North Polk		8	10	10	8	2	3	4	7
Ballard				14	1	2	2		0
Saydel		10	17	4	0	3	4	3	5
Total	227	447	525	413	317	206	159	120	389
Students/Staff in Quarantine									
Week Ending	1-Nov	8-Nov	15-Nov	22-Nov	29-Nov	13-Dec	20-Dec	27-Dec	11-Jan
DMPS*	N/A	N/A	N/A	N/A	N/A	N/A	N/A	N/A	N/A
Ankeny	225	225	370	370	273	172	107	87	132
Waukee	332	500	575	384	160	76	113	136	156
WDM	146	204	239	70	12	38	19	14	114
Johnston	586	667	527	318	286	73	78	73	116
SE Polk	186	211	307	380	401	126	121	129	89
Urbandale	39	97	180	223	179	49	32	34	43
DCG		80	159	216	82	69	46	41	33
Bondurant		148	160	167	138	97	55	62	<6
North Polk		103	101	90	61	55	51	46	30
Ballard				77	40	34	16		28
Saydel		109	88	65	46	30	33	24	39
Total	1514	2344	2706	2360	1678	819	671	646	780

*DMPS does not report quarantined students; DMPS also reports cases only daily

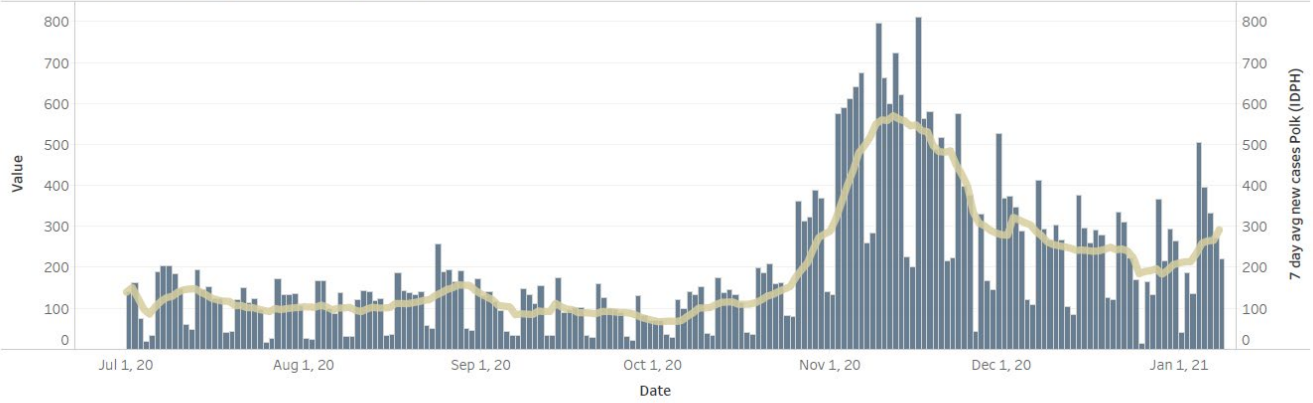
Central Iowa COVID19 Update



Central Iowa COVID19 Update



Polk County Cases by Day and 7d Moving Average



Iowa Cases by Day and 7d Moving Average

