



Central Iowa COVID19 Update

Monday, February 8, 2021



Aperio

Statistical Consulting

Dr. Meg Schaeffer





Quick Stats¹

	Polk County	Iowa
7d Lab Test Positivity	8.2%	6.8%
14d Lab Test Positivity	11.1%	8.9%
Total cases per 100,000 the last 7d	208	153
Total cases per 100,000 the last 14d	450	356
Average daily cases the last 7d	156	721
Average 7-day new cases per 100,000	32	23

¹All data are sourced from <https://coronavirus.iowa.gov/pages/case-counts> with previous days refreshed daily. When recent data are unavailable, data from <https://github.com/nytimes/covid-19-data> may be used. Population of Polk County used is 490,161. Population of Iowa used is 3.155 million. Averages and percent positivity are subject to change with retrospectively refreshed data.

Critical Points, Media, and Research

- Iowa is sustaining a decline; Polk County is decreasing slower than the rest of the state. Iowa is averaging over 700 cases per day, with Polk County averaging >150.
- Hospitalizations are down slightly.
- Influenza activity remains extremely low. [CADE - Iowa Flu Reports](#)
- [CDC director warns Covid variants could reverse the recent drop in cases and hospitalizations](#)
- [US coronavirus: Fauci says new guidance might come soon for people who have been fully vaccinated for Covid-19](#)
- [Actual Coronavirus Infections Far Higher Than Confirmed Cases, Model Shows: Shots](#)
- [UK Covid-19 strain is spreading rapidly throughout the US, study says](#)
- [Disease experts warn of surge in deaths from Covid variants as US lags in tracking](#)

Vaccine

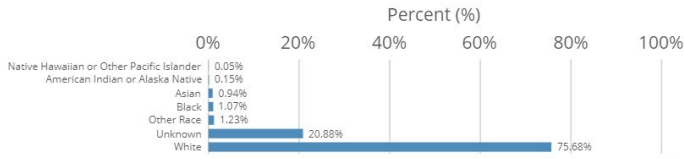
- [Covid-19 Vaccine: Answers to Key Questions](#)
- There are over 700 variant-related cases. CDC is ramping up testing for variants. [US COVID-19 Cases Caused by Variants | CDC](#)
- The South African variant eludes the Astra Zeneca vaccine halting vaccination campaigns from that manufacturer in South Africa. [Covid-19 News: Live Updates](#)
- [mRNA-1273 vaccine induces neutralizing antibodies against spike mutants from global SARS-CoV-2 variants | bioRxiv](#)
- [The effectiveness of the first dose of BNT162b2 vaccine in reducing SARS-CoV-2 infection 13-24 days after immunization: real-world evidence | medRxiv](#)
- [Pfizer expects to cut COVID-19 vaccine production time by almost 50% \(usatoday.com\)](#)
- [Vaccination progress in the US](#)



Vaccination Progress – Polk County

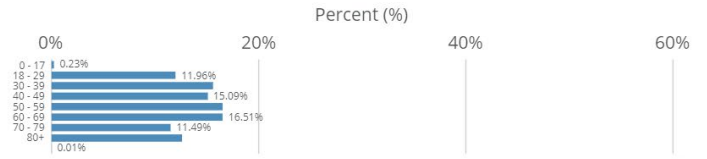
Administration by Race

Doses Administered



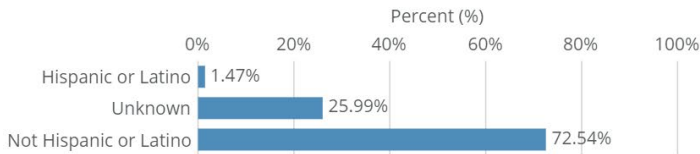
Administration by Age Group

Doses Administered



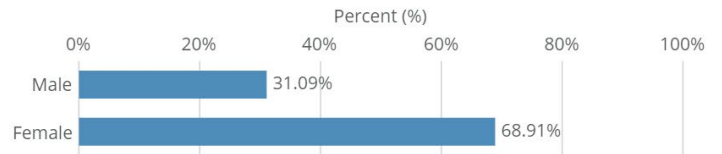
Administration by Ethnicity

Doses Administered



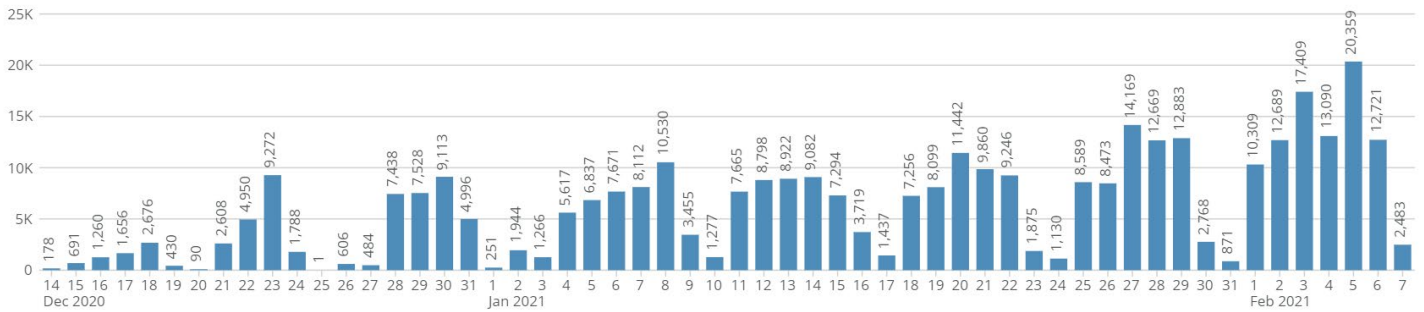
Administration by Sex

Doses Administered



Vaccine Dose Administration by Day (Includes prime and boost doses) by Day

Doses Administered



Vaccine Doses Administered by County

County	Series Initiated	Series Completed
Polk	26,357	10,099
Totals	26,357	10,099

Vaccination Progress – Iowa

Total Doses Administered

348,032

Individuals Initiating Vaccination (1st Dose)

166,952

Doses Administered to Iowa Residents

332,421

Individuals Completing Vaccination (2nd Dose)

90,540

Doses Administered by Manufacturer

Vaccine Manufacturer	Doses
Moderna	202,829
Pfizer	145,203
Total	348,032

Central Iowa COVID19 Update

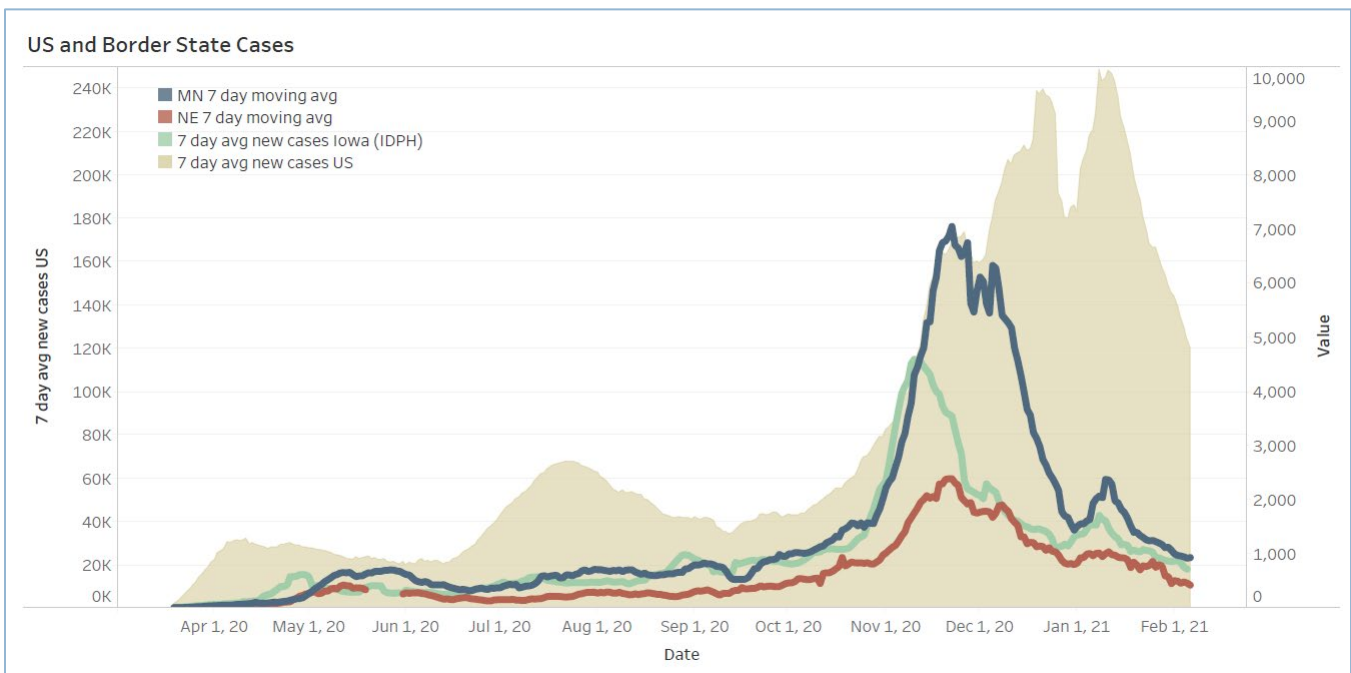
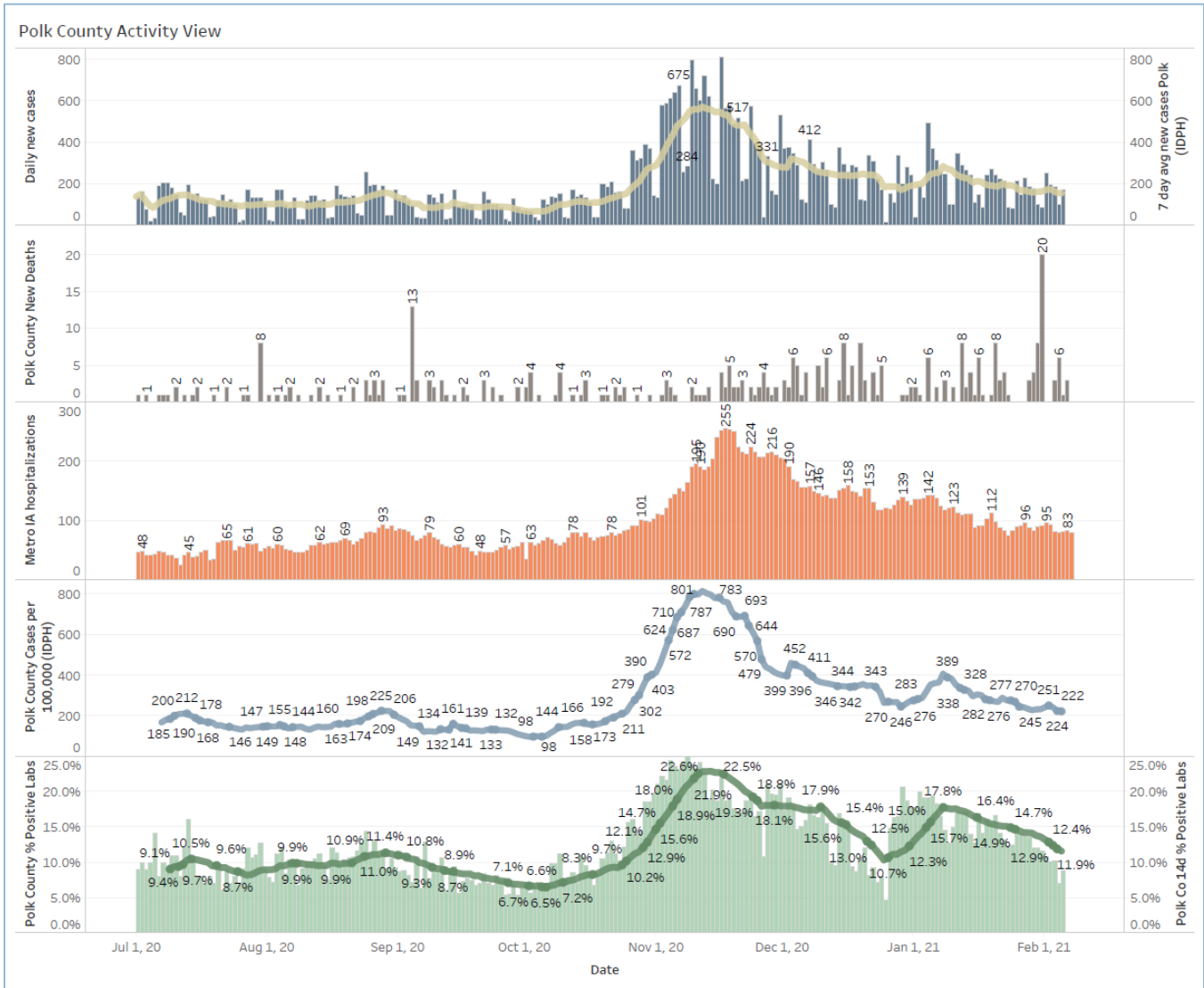


School Statistics – Polk County (Updated per week on Mondays)

Students/Staff in Quarantine													
Week Ending	1-Nov	8-Nov	15-Nov	22-Nov	29-Nov	13-Dec	20-Dec	27-Dec	10-Jan	17-Jan	24-Jan	31-Jan	7-Feb
DMPS	N/A	N/A	N/A	N/A	N/A	N/A	N/A	N/A	N/A	N/A	N/A	N/A	220
Ankeny	225	225	370	370	273	172	107	87	132	116	125	138	178
Waukee	332	500	575	384	160	76	113	136	156	195	95	108	127
WDM	146	204	239	70	12	38	19	14	114	55	54	83	69
Johnston	586	667	527	318	286	73	78	73	116	147	126	109	100
SE Polk	186	211	307	380	401	126	121	129	89	125	129	96	84
Urbandale	39	97	180	223	179	49	32	34	43	71	78	50	67
DCG		80	159	216	82	69	46	41	33	43	42	44	45
Bondurant		148	160	167	138	97	55	62	<6	N/A	28	68	86
North Polk		103	101	90	61	55	51	46	30	19	35	57	52
Ballard				77	40	34	16		28	12	25	20	18
Saydel		109	88	65	46	30	33	24	39	26	27	26	33
Total	1514	2344	2706	2360	1678	819	671	646	780	809	764	799	1079

Rate of Student/Staff Cases Per 1,000													
Week Ending	1-Nov	8-Nov	15-Nov	22-Nov	29-Nov	13-Dec	20-Dec	27-Dec	10-Jan	17-Jan	24-Jan	31-Jan	7-Feb
DMPS	0.2	4.0	0.5	0.5	0.2	0.7	0.7	0.4	4.0	1.9	2.6	0.2	2.5
Ankeny	3.8	3.8	4.3	4.3	4.5	3.3	1.9	1.8	5.9	3.8	3.1	2.8	2.3
Waukee	5.8	10.3	9.4	6.5	4.6	3.5	1.7	1.7	4.5	5.0	2.4	3.3	3.0
WDM	2.8	5.7	11.0	4.7	1.1	2.7	1.9	0.6	4.0	4.2	1.6	2.2	1.6
Johnston	6.3	8.3	10.4	7.1	5.4	2.3	1.7	0.3	4.6	3.4	2.1	3.3	2.3
SE Polk	4.7	5.0	8.3	7.9	7.7	3.0	4.6	2.7	3.4	5.0	3.9	2.9	3.4
Urbandale	1.8	2.0	10.8	8.5	5.8	3.5	3.5	2.0	6.0	3.0	2.5	2.8	3.3
DCG		6.0	10.4	9.5	13.3	4.7	0.9	2.8	2.2	2.2	2.5	1.3	1.3
Bondurant		8.3	7.9	13.4	13.4	3.7	2.8	7.4	0.0		0.9	12.5	19.0
North Polk		4.5	5.6	5.6	4.5	1.1	1.7	2.3	3.9	1.1	7.9	5.6	10.1
Ballard		0.0	0.0	8.2	0.6	1.2	1.2	0.0	0.0	4.1	1.2	1.2	6.4
Saydel		7.5	12.7	3.0	0.0	2.2	3.0	2.2	3.7	3.7	3.7	0.7	1.5

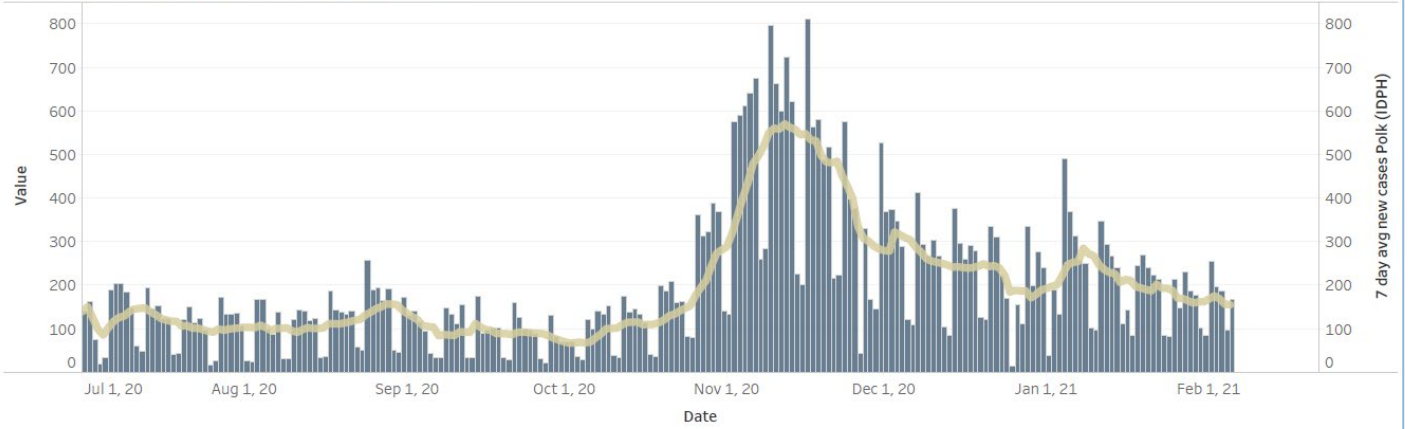
Central Iowa COVID19 Update



Central Iowa COVID19 Update



Polk County Cases by Day and 7d Moving Average



Iowa Cases by Day and 7d Moving Average

