



Central Iowa COVID19 Update

Tuesday, January 5, 2021



Aperio

Statistical Consulting

Dr. Meg Schaeffer





Quick Stats¹

| | Polk County | Iowa |
|--------------------------------------|-------------|-------|
| 7d Lab Test Positivity | 13.8% | 13.3% |
| 14d Lab Test Positivity | 13.1% | 14.1% |
| Total cases per 100,000 the last 7d | 271 | 284 |
| Total cases per 100,000 the last 14d | 569 | 521 |
| Average daily cases the last 7d | 207 | 1231 |
| Average 7-day new cases per 100,000 | 42 | 39 |

¹All data are sourced from <https://coronavirus.iowa.gov/pages/case-counts> with previous days refreshed daily. When recent data are unavailable, data from <https://github.com/nytimes/covid-19-data> may be used. Population of Polk County used is 490,161. Population of Iowa used is 3.155 million. Averages and percent positivity are subject to change with retrospectively refreshed data.

Critical Points, Media, and Research

- Polk County cases are rising. Percent positivity is up 4% since last week, average daily cases have increased along with cases per 100,000. The state trend is also increasing.
- The COVID-19 UK variant (B.1.1.7) was identified in multiple states in the US. The strain is likely to more widespread than detected in the US as less than 0.03% of strains are sequenced. Another variant found in South Africa has mutations similar to the UK strain.

Key points regarding the UK variant:

- Spreads more quickly than previous strains
- Does not cause more severe illness
- Is detected by routine tests
- Therapeutic treatments may be less effective
- Vaccine effectiveness is not believed to be affected, at this time

<https://www.cdc.gov/coronavirus/2019-ncov/more/science-and-research/scientific-brief-emerging-variants.html>

- Flu activity remains low. <https://idph.iowa.gov/influenza/reports>
- UK enters lockdown including schools and universities as variant rages. <https://www.nytimes.com/2021/01/04/world/europe/uk-lockdown.html>
- Less than half of vaccine received in Iowa has been administered. It is expected to take 12 weeks to vaccinate staff and residents in long term care facilities. <https://www.desmoinesregister.com/story/news/health/2021/01/04/nearly-2-percent-iowans-have-received-first-dose-covid-19-vaccine-coronavirus-roll-out/4135609001/>
- FDA is not recommending any changes to second dose timing or allowance to interchange vaccines. <https://www.npr.org/sections/coronavirus-live-updates/2021/01/04/953431400/fda-warns-health-officials-not-to-mess-with-covid-19-vaccine-doses-schedule>
- FDA will weigh half dosing of the Moderna vaccine. <https://www.foxnews.com/health/fda-discussing-half-dosing-moderna-coronavirus-vaccines-operation-warp-speed-slaoui>

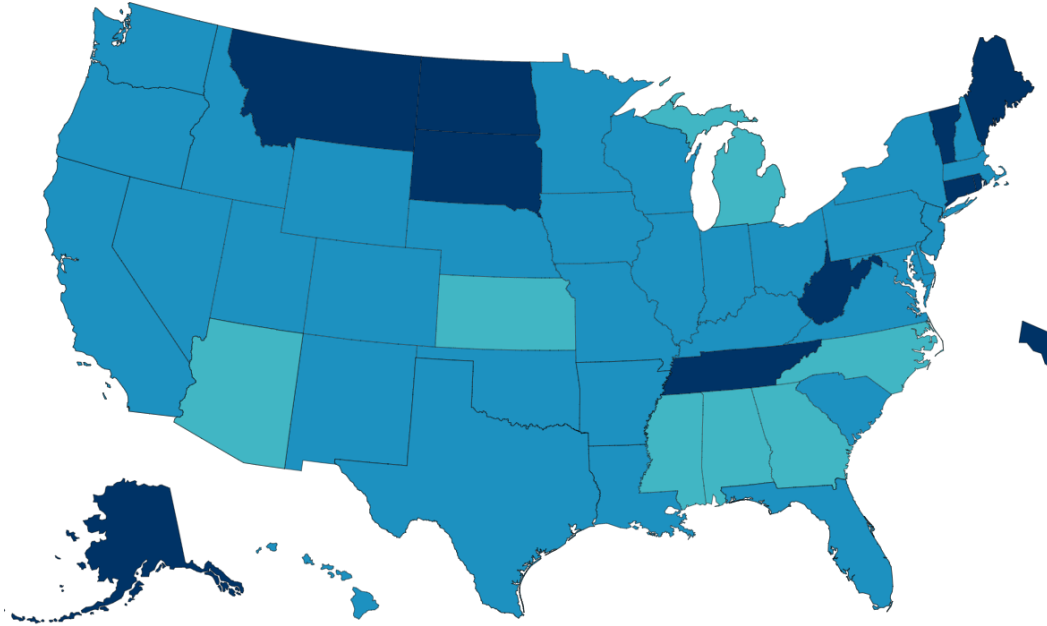
Vaccine

- Efficacy and safety of the Moderna COVID-19 vaccine. Of 30,420 volunteers, efficacy was 94.1% with only 30 participants developing severe illness and one fatality. https://www.nejm.org/doi/full/10.1056/NEJMoa2035389?query=featured_coronavirus
- Safety and efficacy clinical trial data review of the Pfizer vaccine. https://www.nejm.org/doi/full/10.1056/NEJMoa2034577?query=featured_coronavirus

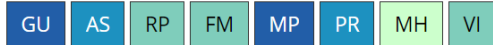


Vaccination Progress

Total Number of People Initiating Vaccination (1st Dose Received) Reported to the CDC by State/Territory and for Selected Federal Entities per 100,000



Territories



Federal Entities



Total Number of People Initiating Vaccination per 100,000



Central Iowa COVID19 Update



School Statistics – Polk County (will be updated on 1/7)

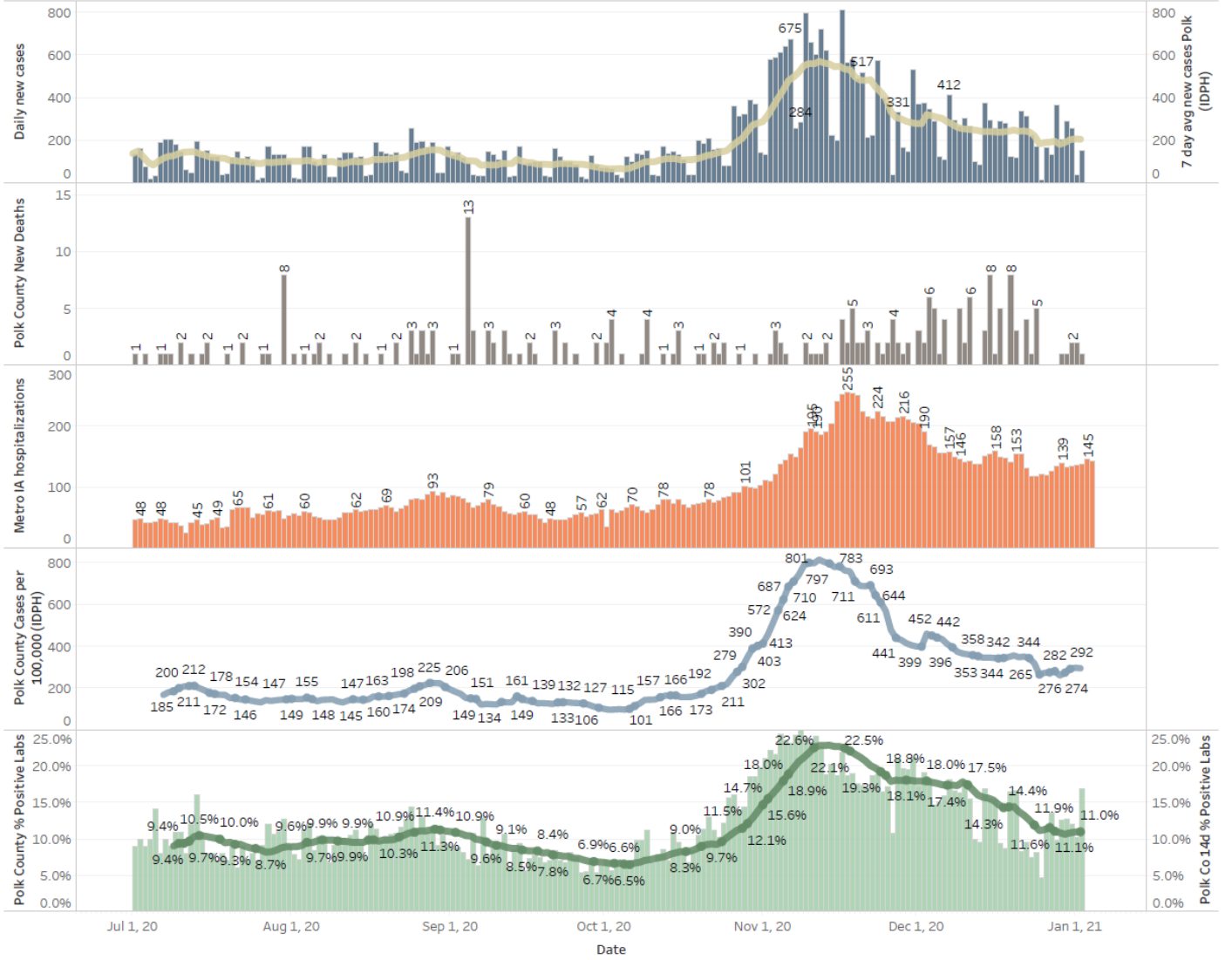
| New Student/Staff Cases | | | | | | | | |
|-------------------------------------|--------------|--------------|---------------|---------------|---------------|---------------|---------------|---------------|
| Week Ending | 1-Nov | 8-Nov | 15-Nov | 22-Nov | 29-Nov | 13-Dec | 20-Dec | 27-Dec |
| DMPS* | 5 | 15 | 15 | 18 | 5 | 22 | 24 | 12 |
| Ankeny | 46 | 46 | 52 | 52 | 54 | 39 | 23 | 22 |
| Waukee | 67 | 118 | 108 | 75 | 53 | 40 | 19 | 20 |
| WDM | 25 | 51 | 99 | 42 | 10 | 24 | 17 | 5 |
| Johnston | 44 | 58 | 73 | 50 | 38 | 16 | 12 | 2 |
| SE Polk | 33 | 35 | 58 | 55 | 54 | 21 | 32 | 19 |
| Urbandale | 7 | 8 | 43 | 34 | 23 | 14 | 14 | 8 |
| DCG | | 19 | 33 | 30 | 42 | 15 | 3 | 9 |
| Bondurant | | 18 | 17 | 29 | 29 | 8 | 6 | 16 |
| North Polk | | 8 | 10 | 10 | 8 | 2 | 3 | 4 |
| Ballard | | | | 14 | 1 | 2 | 2 | |
| Saydel | | 10 | 17 | 4 | 0 | 3 | 4 | 3 |
| Total | 227 | 331 | 525 | 413 | 317 | 206 | 159 | 120 |
| Students/Staff in Quarantine | | | | | | | | |
| Week Ending | 1-Nov | 8-Nov | 15-Nov | 22-Nov | 29-Nov | 13-Dec | 20-Dec | 27-Dec |
| DMPS* | N/A | N/A | N/A | N/A | N/A | N/A | N/A | N/A |
| Ankeny | 225 | 225 | 370 | 370 | 273 | 172 | 107 | 87 |
| Waukee | 332 | 500 | 575 | 384 | 160 | 76 | 113 | 136 |
| WDM | 146 | 204 | 239 | 70 | 12 | 38 | 19 | 14 |
| Johnston | 586 | 667 | 527 | 318 | 286 | 73 | 78 | 73 |
| SE Polk | 186 | 211 | 307 | 380 | 401 | 126 | 121 | 129 |
| Urbandale | 39 | 97 | 180 | 223 | 179 | 49 | 32 | 34 |
| DCG | | 80 | 159 | 216 | 82 | 69 | 46 | 41 |
| Bondurant | | 148 | 160 | 167 | 138 | 97 | 55 | 62 |
| North Polk | | 103 | 101 | 90 | 61 | 55 | 51 | 46 |
| Ballard | | | | 77 | 40 | 34 | 16 | |
| Saydel | | 109 | 88 | 65 | 46 | 30 | 33 | 24 |
| Total | 1514 | 2344 | 2706 | 2360 | 1678 | 819 | 671 | 646 |

*DMPS does not report quarantined students; DMPS also reports cases only daily

Central Iowa COVID19 Update



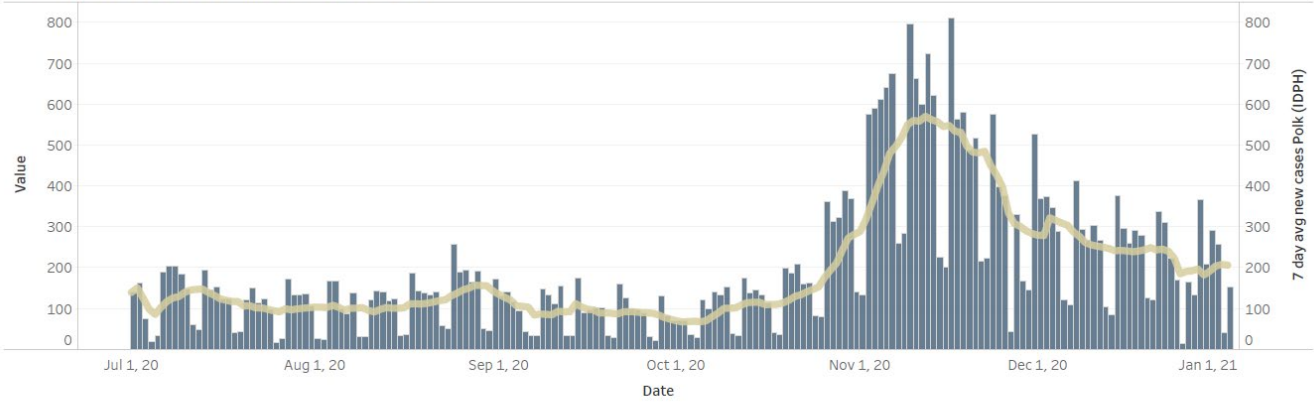
Polk County Activity View



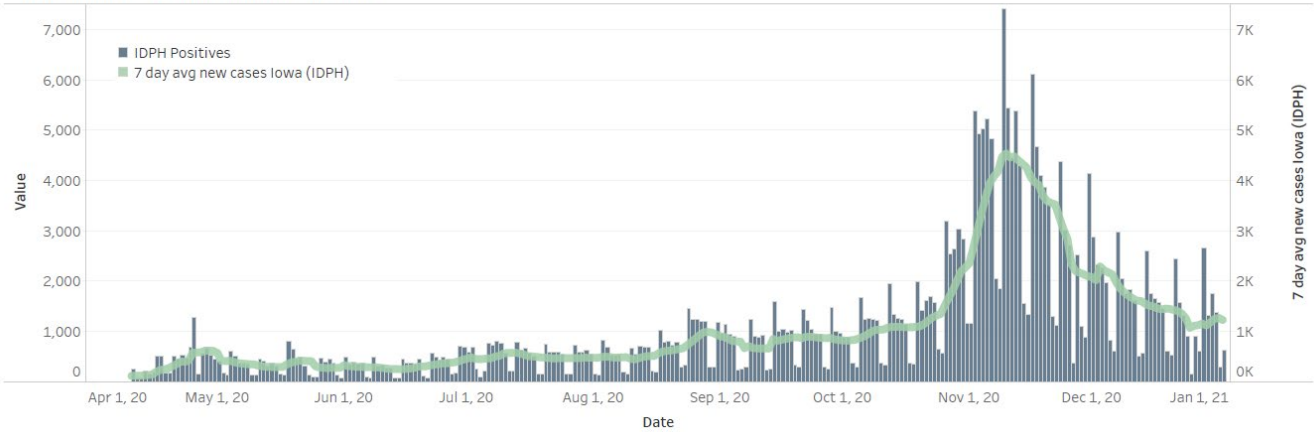
Central Iowa COVID19 Update



Polk County Cases by Day and 7d Moving Average



Iowa Cases by Day and 7d Moving Average



US and Border State Cases

