

# Central Iowa COVID19 Update

---

Wednesday, March 30, 2022



Statistical Consulting

Dr. Meg Schaeffer





## Quick Stats

	Polk County	Next Highest Target**	Iowa
Percent of population with at least 1 dose*	74%		67.6%
Percent of population with fully vaccinated*	67.3%	85%	61.5%
Average daily cases the last 7d	16		104
CDC County Transmission Level***	Low	Med	
Total cases per 100,000 the last 7d**	23	>200	23
Percent of staffed inpatient beds occupied by COVID-19 patients (7-day average)**	1.4%	10-14%	1.03%
New COVID-19 admissions per 100,000 population (7-day total)**	2.4	10-19.9	2.6

\*[Vaccine Information](#) | [Iowa COVID-19 Information](#)

All data are sourced from <https://coronavirus.iowa.gov/pages/case-counts> with previous days refreshed weekly. The population of Polk County used is 490,161. Population of Iowa used is 3.155 million. Averages and percent positivity are subject to change with retrospectively refreshed data.

\*\*[CDC COVID Data Tracker](#)

\*\*\*[COVID-19 County Check Tool](#) | [CDC](#)

## Critical Points, Media, and Research

Polk County and Iowa case counts remain low and stable along with hospitalizations. A fourth dose of the COVID (Pfizer or Moderna) vaccine was approved by the FDA this week for those 50 and older (at least four months from the last dose) or those who are immune compromised.

The BA.2 omicron subvariant still poses a threat for a late-spring surge. In Iowa, the subvariant accounts for 36.7% of cases up from 19% last week. The U.S. variant proportion is 54.9% for BA.2 up from 35% last week.

## News & Research

- [The White House launches COVID.gov, a COVID-19 information](#)
- [Ivermectin doesn't prevent COVID-19 hospitalization, a new study says : NPR](#)
- [BA.2: What we know about the dominant cause of Covid-19 in the US - CNN](#)
- [CDC Recommends Additional Boosters for Certain Individuals | CDC Online Newsroom | CDC](#)
- [COVID-19 in Iowa: Hospitalizations tick back up as cases fall again](#)
- Effectiveness of Homologous and Heterologous COVID-19 Booster Doses Following 1 Ad.26.COV2.S (Janssen [Johnson & Johnson]) Vaccine Dose Against COVID-19–Associated Emergency Department and Urgent Care Encounters and Hospitalizations Among Adults — VISION Network, 10 States, December 2021–March 2022. Link [here](#).
- Use of At-Home COVID-19 Tests — United States, August 23, 2021–March 12, 2022. Link [here](#).
- Lessons Learned from Programmatic Gains in HIV Service Delivery During the COVID-19 Pandemic — 41 PEPFAR-Supported Countries, 2020. Link [here](#).



## Vaccine Progress

Polk Co Vaccination Rates CDC Covid Data Tracker Data (*)	At Least One Dose	Difference prev week	Fully Vaccinated	Difference prev week
<b>Total</b>	362,686	349	329,819	408
<b>% of Total Population</b>	74.0%	0.1%	67.3%	0.1%
<b>Population ≥ 5 Years of Age</b>	362,641	347	329,819	408
<b>% of Population ≥ 5 Years of Age</b>	79.6%	0.1%	72.4%	0.1%
<b>Population ≥ 12 Years of Age</b>	345,235	251	314,328	279
<b>% of Population ≥ 12 Years of Age</b>	84.5%	0.1%	76.9%	0.1%
<b>Population ≥ 18 Years of Age</b>	317,087	218	288,798	237
<b>% of Population ≥ 18 Years of Age</b>	85.9%	0.1%	78.2%	0.0%
<b>Population ≥ 65 Years of Age</b>	68,505	15	63,566	11
<b>% of Population ≥ 65 Years of Age</b>	95.0%	0.0%	95.0%	0.0%

(\*) CDC COVID Data Tracker Data: CDC data includes vaccine administration data from all sources, including IRIS\*, other state immunization registries, and federal entities (Bureau of Prisons, Veterans Health Administration, Department of Defense, and Federal Long-Term Care program). These doses may not have been reported to IRIS.

Link to Zip Code-Level Vaccination Rates - <https://arcg.is/1nTry4>

### Polk Co People Fully Vaccinated with a Booster (\*)

	Data	Difference prev week
<b>Total</b>	173,356	752
% of Fully Vaccinated Population with a Booster Dose	52.6%	0.2%
Fully Vaccinated Population ≥ 18 Years of Age with a Booster Dose	173,323	751
% of Fully Vaccinated Population ≥ 18 Years of Age with a Booster Dose	55.1%	0.1%
Fully Vaccinated Population ≥ 50 Years of Age with a Booster Dose	166,788	645
% of Fully Vaccinated Population ≥ 50 Years of Age with a Booster Dose	57.8%	0.2%
Fully Vaccinated Population ≥ 65 Years of Age with a Booster Dose	51,099	85
% of Fully Vaccinated Population ≥ 65 Years of Age with a Booster Dose	80.4%	0.1%

(\*)The count of people who received a booster dose includes anyone who is fully vaccinated and has received another dose of COVID-19 vaccine since August 13, 2021. This includes people who received booster doses and people who received additional doses.

# Central Iowa COVID19 Update

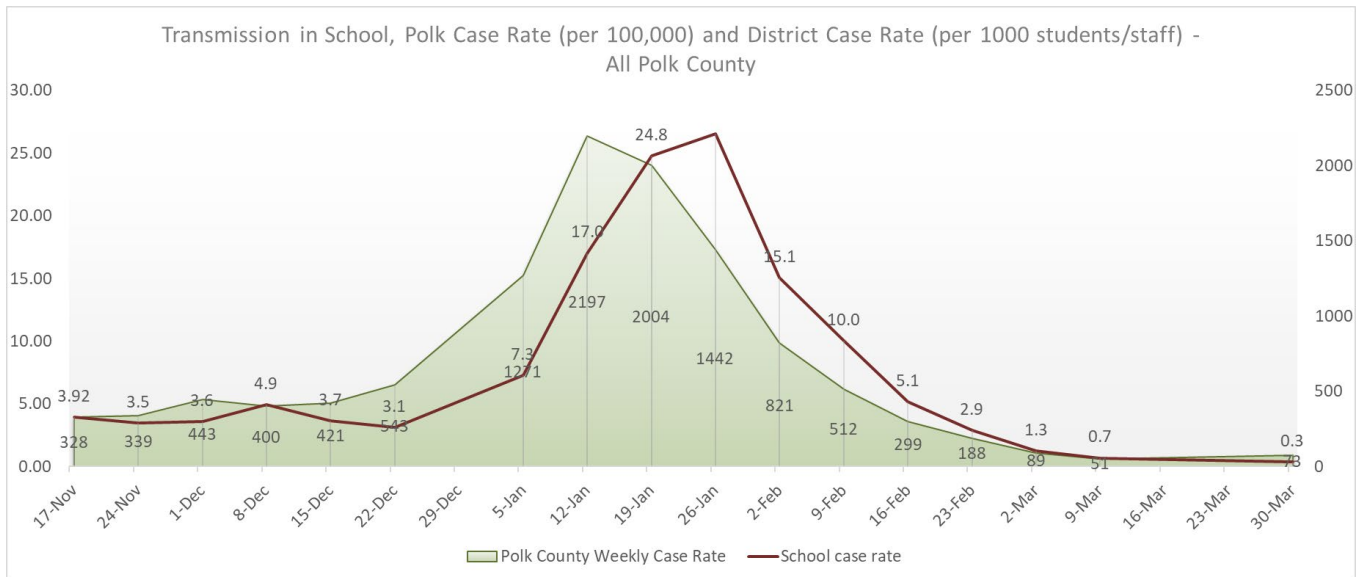


## School Data

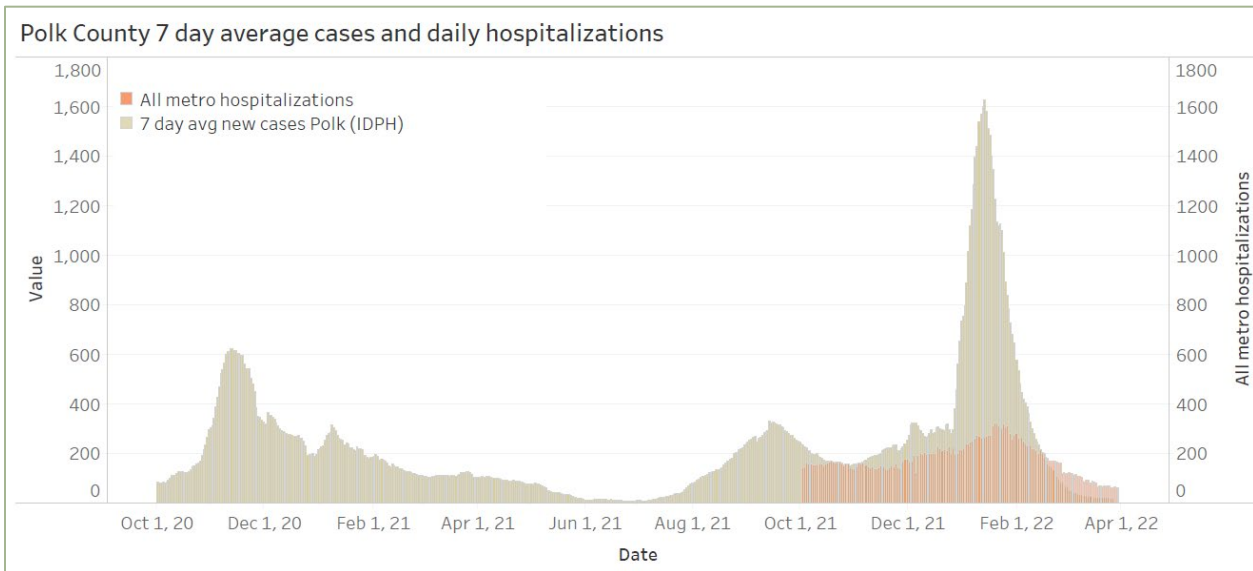
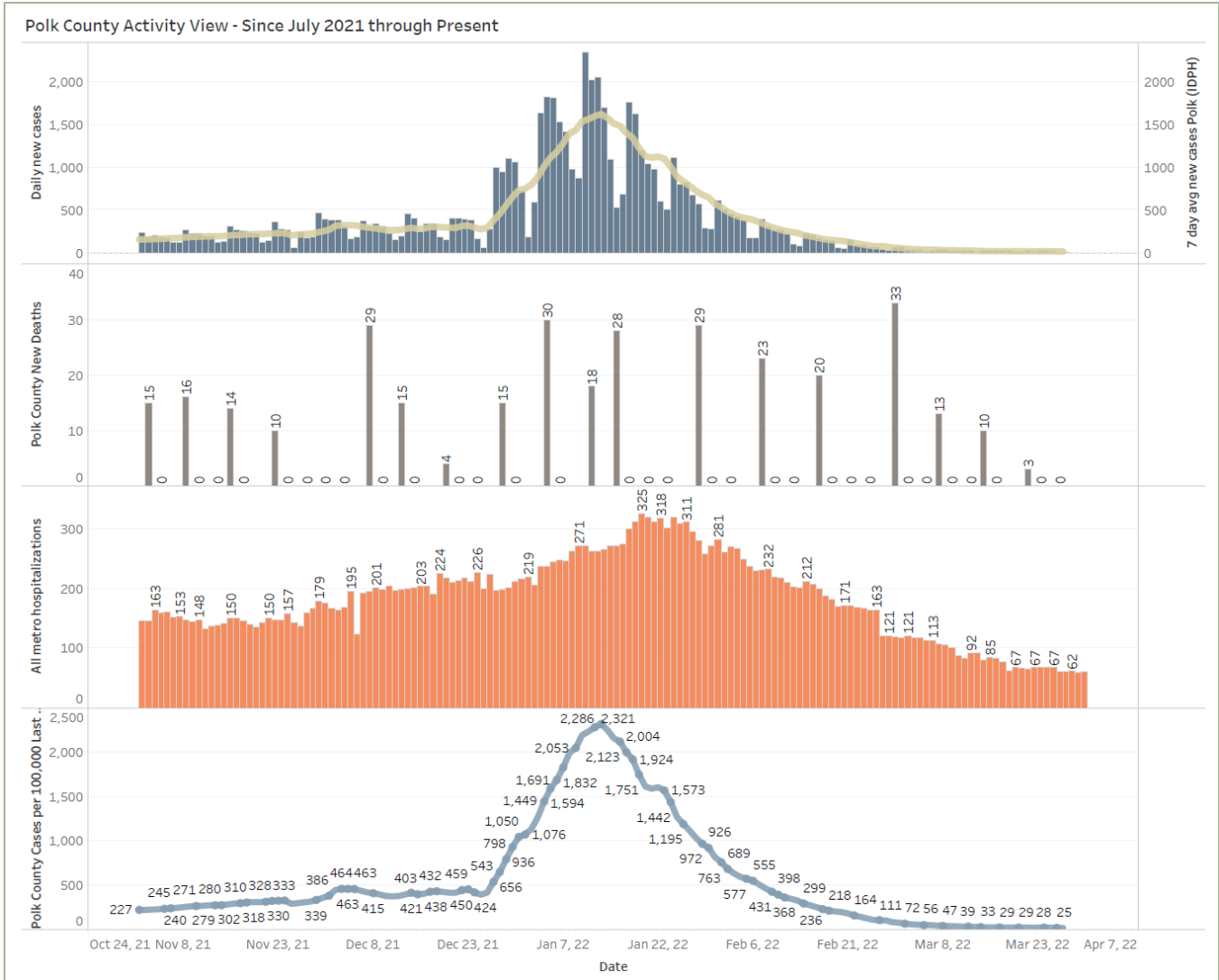
Week Ending	New Student/Staff Case Rates per 1000																
	17-Nov	24-Nov	1-Dec	8-Dec	15-Dec	22-Dec	5-Jan	12-Jan	19-Jan	26-Jan	2-Feb	9-Feb	16-Feb	23-Feb	2-Mar	9-Mar	30-Mar
DMPs*	2.12	2.24	3.58	5.06	3.79	3.03	7.91	14.79	11.45	19.45	8.45	10.06	2.70	1.61	0.27	0.36	0.30
Ankeny	4.00	3.33	3.25	5.83	5.00	4.67	NA	18.42	32.08	40.58	24.83	18.33	6.42	3.42	1.92	0.50	0.17
Waukee	6.70	8.09	4.43	4.52	3.57	3.04	8.26	15.74	13.22	13.04	6.96	3.22	1.74	0.78	0.09	0.17	0.17
WDM	5.67	5.00	5.00	7.67	5.11	3.78	NA	19.67	31.67	33.44	26.11	11.56	9.11	3.33	3.33	1.22	0.22
Johnston	3.43	0.86	2.00	3.43	2.86	3.43	NA	8.29	24.57	36.29	8.71	10.29	2.14	2.86	1.71	0.86	0.29
SE Polk	2.29	3.14	4.14	5.29	2.86	1.71	1.86	13.29	14.71	11.57	10.29	4.86	2.14	1.00	0.29	0.43	0.00
Urbandale	3.25	4.25	3.00	3.75	1.75	2.75	11.00	29.00	46.00	31.50	20.00	12.00	11.75	7.00	1.25	1.25	1.25
School case rate	3.92	3.5	3.6	4.9	3.7	3.1	7.3	17.0	24.8	26.6	15.1	10.0	5.1	2.9	1.3	0.7	0.3

Week Ending	New Student/Staff Cases																
	17-Nov	24-Nov	1-Dec	8-Dec	15-Dec	22-Dec	5-Jan	12-Jan	19-Jan	26-Jan	2-Feb	9-Feb	16-Feb	23-Feb	23-Feb	9-Mar	30-Mar
DMPs*	70	74	118	167	125	100	261	488	378	642	279	332	89	53	9	12	10
Ankeny	48	40	39	70	60	56	NA	221	385	487	298	220	77	41	23	6	2
Waukee	90	105	63	65	48	36	120	210	186	150	80	37	20	9	1	2	2
WDM	51	45	45	69	46	34	NA	177	285	301	235	104	82	30	30	11	2
Johnston	24	6	14	24	20	24	NA	72	208	254	61	72	15	20	12	6	2
SE Polk	16	22	29	37	20	12	13	93	103	81	72	34	15	7	2	3	0
Urbandale	13	17	12	15	7	11	44	116	184	126	80	48	47	28	5	5	5
Total School Cases	312	309	320	447	326	273	438	1377	1729	2041	1105	847	345	188	82	45	23
Polk Weekly Cases	1608	1663	2173	1959	2064	2661	6230	10766	9820	7066	4024	2508	1466	920	438	250	359
Polk County Weekly Case Rate	3.92	3.5	3.6	4.9	3.7	3.1	7.3	17.0	24.8	26.6	15.1	10.0	5.1	2.9	1.3	0.7	0.3



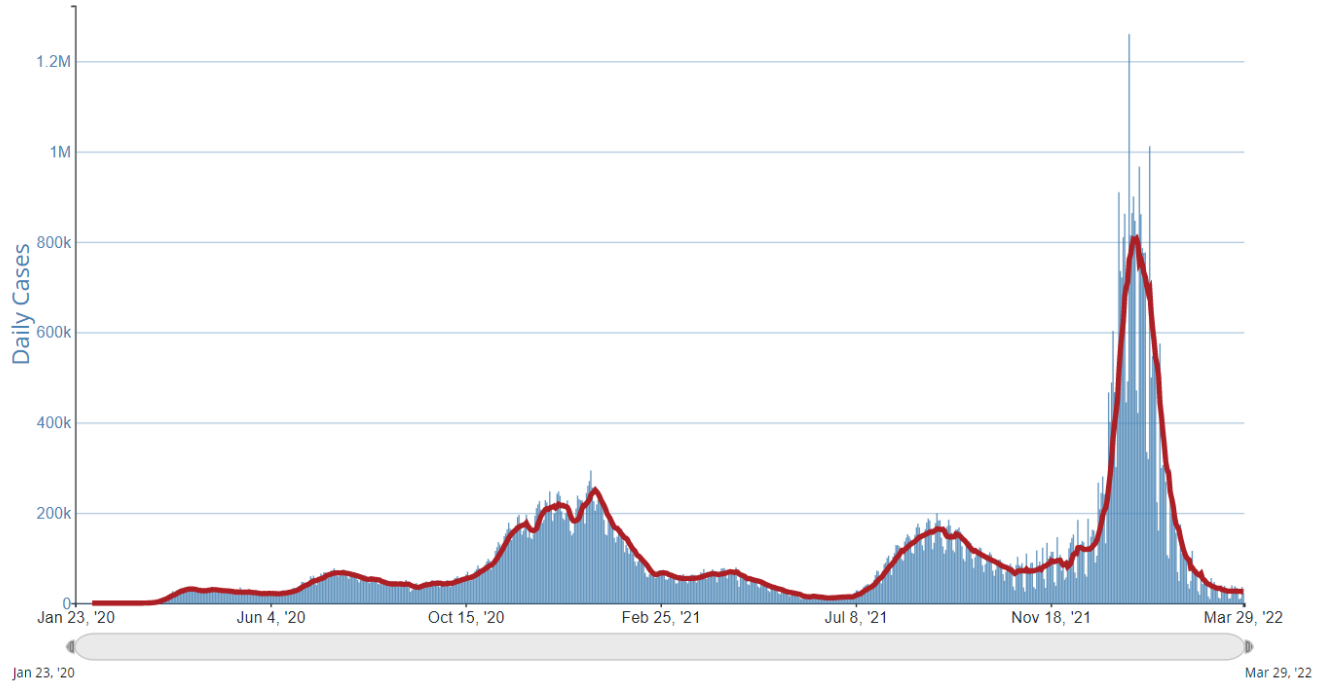
# Central Iowa COVID19 Update



# Central Iowa COVID19 Update



Daily Trends in Number of COVID-19 Cases in The United States Reported to CDC



	CASES DAILY AVG.	PER 100,000	14-DAY CHANGE	HOSPITALIZED DAILY AVG.	PER 100,000	14-DAY CHANGE	DEATHS DAILY AVG.	PER 100,000	FULLY VACCINATED
United States	29,253	9	-9%	17,464	5	-34%	716.1	0.22	65%
American Samoa	216	438	+474%	4	9	+182%	—	—	81%
Northern Mariana Islands ›	41	76	-6%	—	—	—	0.2	0.34	80%
Alaska ›	212	29	+17%	35	5	-31%	2.9	0.39	62%
Guam ›	41	24	-58%	—	—	—	0.3	0.16	82%
Vermont ›	133	21	+12%	14	2	-32%	0.6	0.09	81%
Kentucky ›	800	18	-39%	307	7	-45%	33.7	0.75	57%
Colorado ›	994	17	+18%	147	3	-47%	3.3	0.06	70%
Texas ›	4,841	17	+21%	1,595	6	-34%	49.7	0.17	61%
New York ›	3,056	16	+65%	1,161	6	-23%	11.6	0.06	76%
Rhode Island ›	164	15	-1%	45	4	-12%	1.1	0.11	81%