



# Central Iowa COVID19 Update

---

Wednesday, November 11, 2020



Statistical Consulting

Dr. Meg Schaeffer





## Quick Stats<sup>1</sup>

	Polk County	Iowa
7d Lab Test Positivity	20.1%	23.8%
14d Lab Test Positivity	18.3%	21.6%
Total cases per 100,000 the last 7d	711	870
Total cases per 100,000 the last 14d	1123	1389
Average daily cases the last 7d	498	3923
Average 7-day new cases per 100,000	107	124

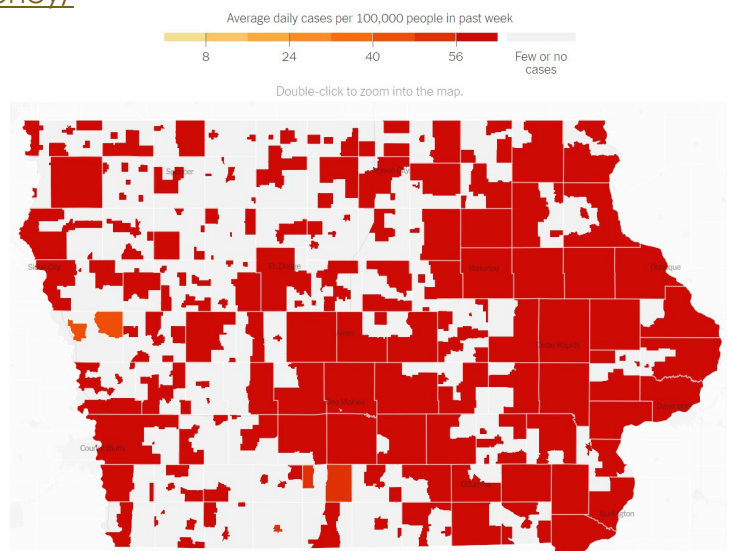
<sup>1</sup>All data are sourced from <https://coronavirus.iowa.gov/pages/case-counts> with previous days refreshed daily. When recent data are unavailable, data from <https://github.com/nytimes/covid-19-data> may be used. Population of Polk County used is 490,161. Population of Iowa used is 3.155 million. Averages and percent positivity are subject to change with retrospectively refreshed data.

## Critical Points

- Polk County activity is increasing exponentially. Iowa has the third highest case rate per population of all states.
- Polk County average daily cases have nearly doubled in a week, and the state is averaging over 3,000 new cases per day.
- Iowa activity is increasing at a rate three times that of the rest of the country.
- An important article published in CDC's research summary cited school reopening and public mass gatherings as significant drivers of community transmission. The study involved a review of strategies and case impacts in 131 countries.
- [https://www.thelancet.com/journals/laninf/article/PIIS1473-3099\(20\)30785-4/fulltext](https://www.thelancet.com/journals/laninf/article/PIIS1473-3099(20)30785-4/fulltext)
- Early Pfizer vaccine data shows >90% efficacy. Pfizer indicated they will apply for Emergency Use Authorization at the end of November, after which the FDA will take several weeks to review safety data before issuing a decision. Pfizer estimates 15-20 million doses will be available by the end of the year, with each recipient requiring two doses.
- <https://apnews.com/article/pfizer-vaccine-effective-early-data-4f4ae2e3bad122d17742be22a2240ae8>
- The State of Utah issued sweeping, statewide mitigation plans to combat hospital capacity stress and surging cases. The governor's plan includes a mask mandate, but allows for businesses to remain open if they enforce employee protections.
- <https://coronavirus.utah.gov/state-of-emergency/>

	TOTAL CASES	PER 100,000	DAILY AVG. IN LAST 7 DAYS	▼ PER 100,000	WEEKLY CASES PER CAPITA
					FEWER MORE
+ North Dakota MAP »	57,378	7,529	1,309.3	171.8	
+ South Dakota MAP »	58,696	6,635	1,211.4	136.9	
+ Iowa MAP »	166,841	5,288	4,178.7	132.4	
+ Wyoming MAP »	19,374	3,348	660.4	114.1	
+ Wisconsin MAP »	301,349	5,176	6,090.7	104.6	
+ Nebraska MAP »	87,733	4,535	1,953.3	101	
+ Illinois MAP »	524,792	4,141	10,687	84.3	
+ Minnesota MAP »	194,626	3,451	4,655	82.5	
+ Utah MAP »	139,720	4,358	2,592.6	80.9	
+ Montana MAP »	42,132	3,942	856.7	80.2	

NYT US Activity





## School Statistics – Polk County

<b>New Student/Staff Cases</b>			
<b>Week Ending</b>	<b>1-Nov</b>	<b>8-Nov</b>	<b>15-Nov</b>
DMPS*	5	15	5
Ankeny	46	46	46
Waukee	67	118	110
WDM	25	43	23
Johnston	44	58	57
SE Polk	33	35	46
Urbandale	7	8	8
DCG		19	19
Bondurant		18	20
North Polk		8	18
Saydel		10	16
Total	227	323	368

<b>Students/Staff in Quarantine</b>			
<b>Week Ending</b>	<b>1-Nov</b>	<b>8-Nov</b>	<b>15-Nov</b>
DMPS*	N/A	N/A	N/A
Ankeny	225	225	225
Waukee	332	500	521
WDM	146	170	47
Johnston	586	667	469
SE Polk	186	211	272
Urbandale	39	97	97
DCG		80	80
Bondurant		148	155
North Polk		103	119
Saydel		109	104
Total	1514	2310	

\*DMPS combines student and staff cases

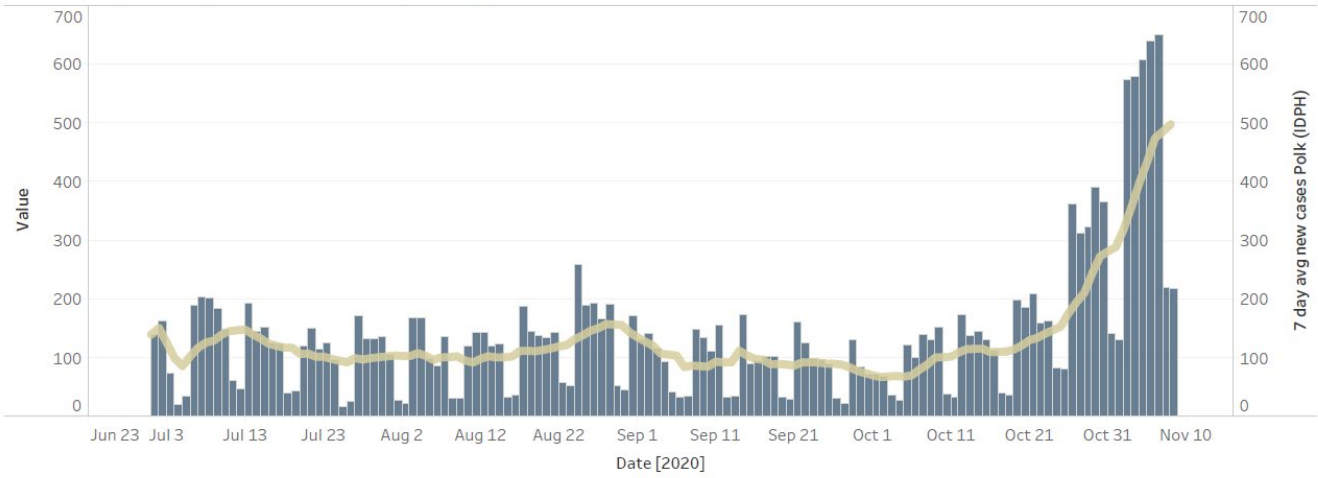
## Research & Media

- Universal mask wearing could prevent 100,000 deaths over the next four months.
- <https://www.iwatch.org/na52734/2020/11/05/how-many-lives-could-be-saved-mask-wearing>
- Ely Lilly received EUA approval for a single antibody therapy. In early, limited data, the therapy shows a slight reduction in duration in hospitalization if administered early in the course of infection. Only 50,000 doses will be available through the end of the year.
- <https://www.nytimes.com/2020/11/09/health/covid-antibody-treatment-eli-lilly.html?action=click&module=RelatedLinks&pgtype=Article>

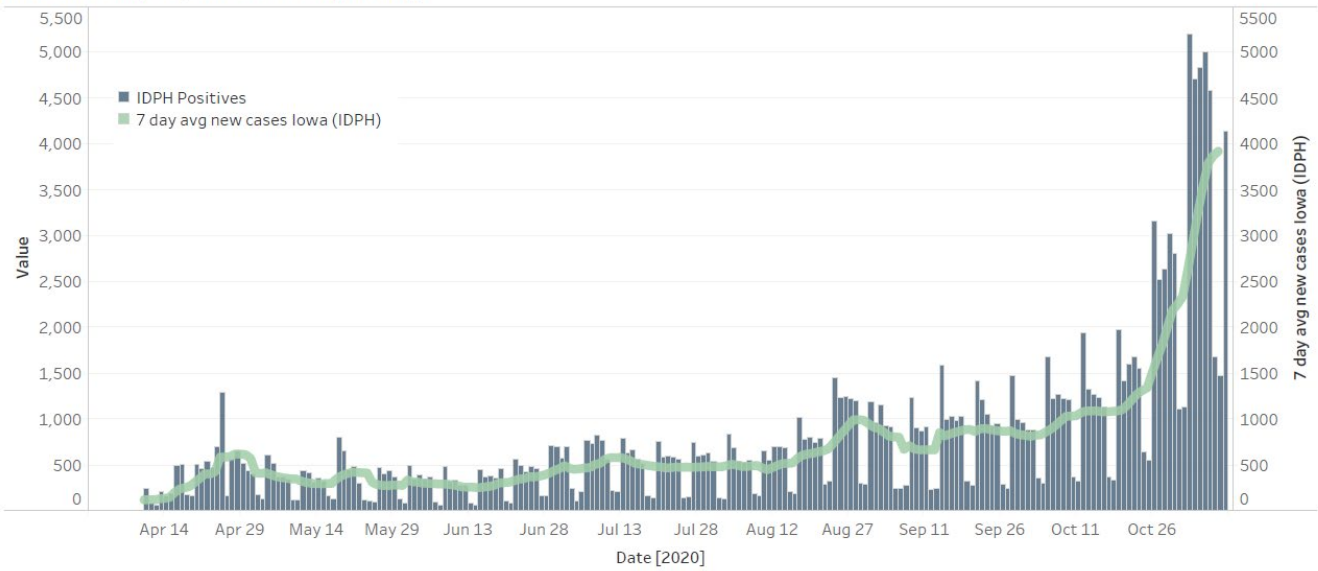
# Central Iowa COVID19 Update



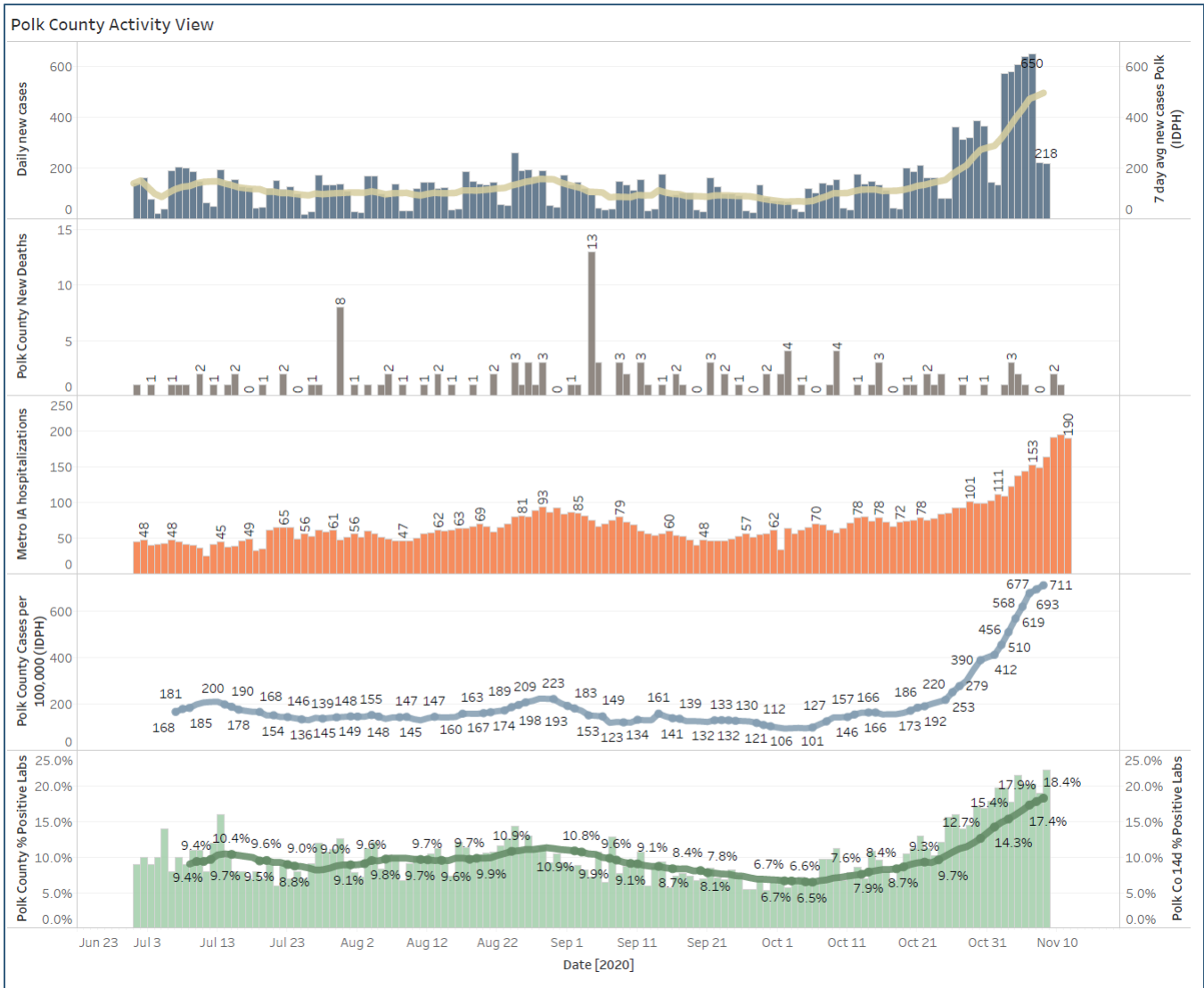
### Polk County Cases by Day and 7d Moving Average



### Iowa Cases by Day and 7d Moving Average



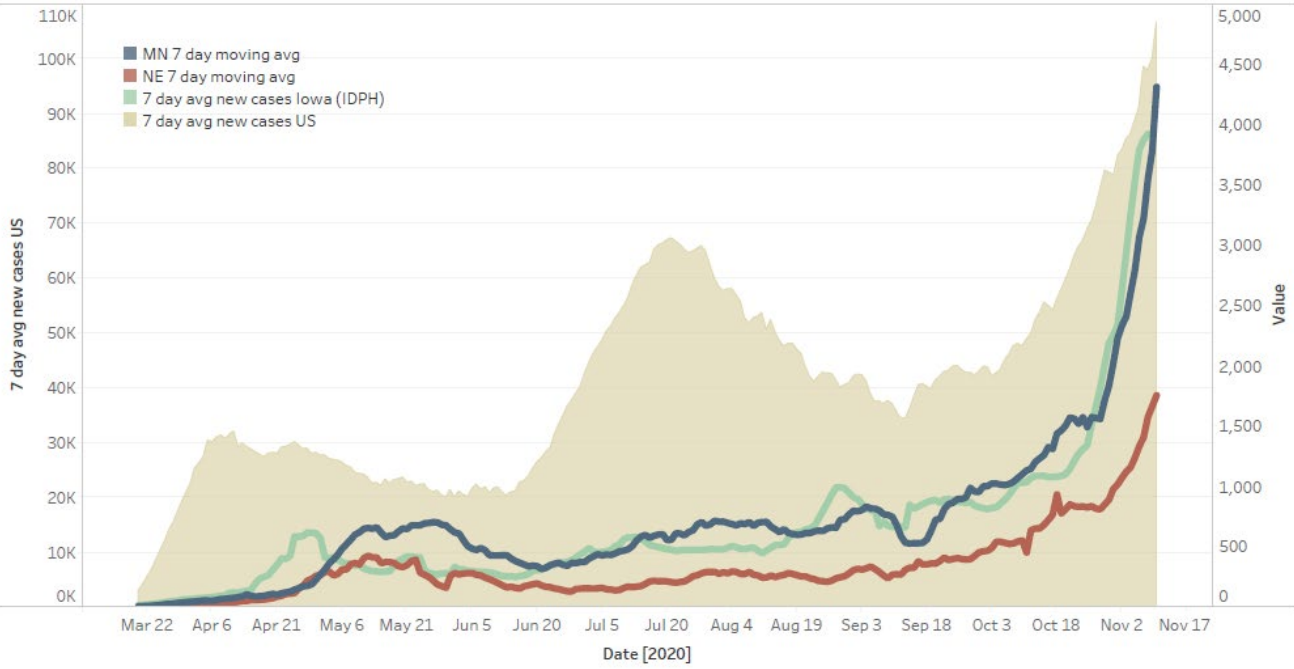
# Central Iowa COVID19 Update



# Central Iowa COVID19 Update



## US and Border State Cases



## US, Iowa, MN, NE New Daily Cases

