



Central Iowa COVID19 Update

Monday, October 26, 2020



Aperio

Statistical Consulting

Dr. Meg Schaeffer





Quick Stats¹

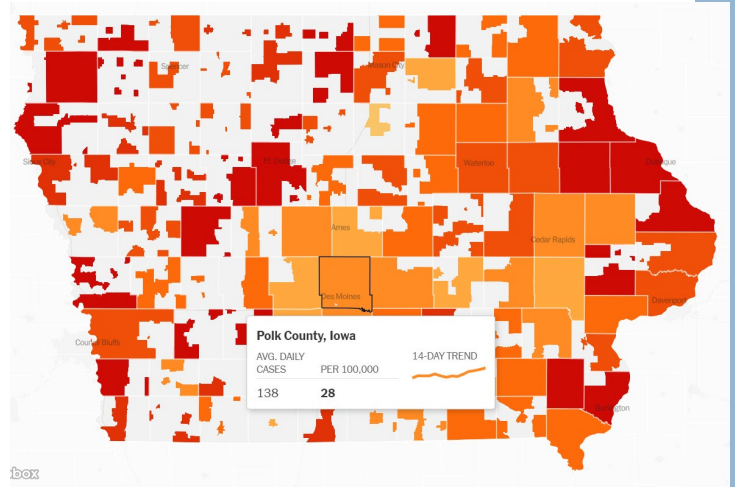
	Polk County	Iowa
7d Lab Test Positivity	8%	10%
14d Lab Test Positivity	8%	11%
Total cases per 100,000 the last 7d	184	264
Total cases per 100,000 the last 14d	340	503
Average daily cases the last 7d	129	1191
Average 7-day new cases per 100,000	26	38

¹All data are sourced from <https://coronavirus.iowa.gov/pages/case-counts> with previous days refreshed daily. When recent data are unavailable, data from <https://github.com/nytimes/covid-19-data> may be used. Population of Polk County used is 490,161. Population of Iowa used is 3.155 million. Averages and percent positivity are subject to change with retrospectively refreshed data.

Critical Points

- Polk County activity is increasing very quickly.
- Hospitalizations are the highest of any point in the outbreak at 561, with 100 more than last week.

	TOTAL CASES	PER 100,000	CASES IN LAST 7 DAYS	▼ PER 100,000	WEEKLY CASES PER CAPITA
					FEWER MORE
+ North Dakota MAP »	37,724	4,950	5,741	753	
+ South Dakota MAP »	39,203	4,431	5,934	671	
+ Montana MAP »	27,880	2,609	5,059	473	
+ Wisconsin MAP »	208,917	3,588	25,740	442	
Guam	5,110	3,033	603	358	
+ Idaho MAP »	59,344	3,321	6,252	350	
+ Wyoming MAP »	11,041	1,908	2,016	348	
+ Utah MAP »	105,053	3,277	10,659	332	
+ Nebraska MAP »	63,797	3,298	5,729	296	
+ Iowa MAP »	116,238	3,684	8,904	282	



Sources: State and local health agencies. Population and demographic data from Census Bureau.

NYT US Activity

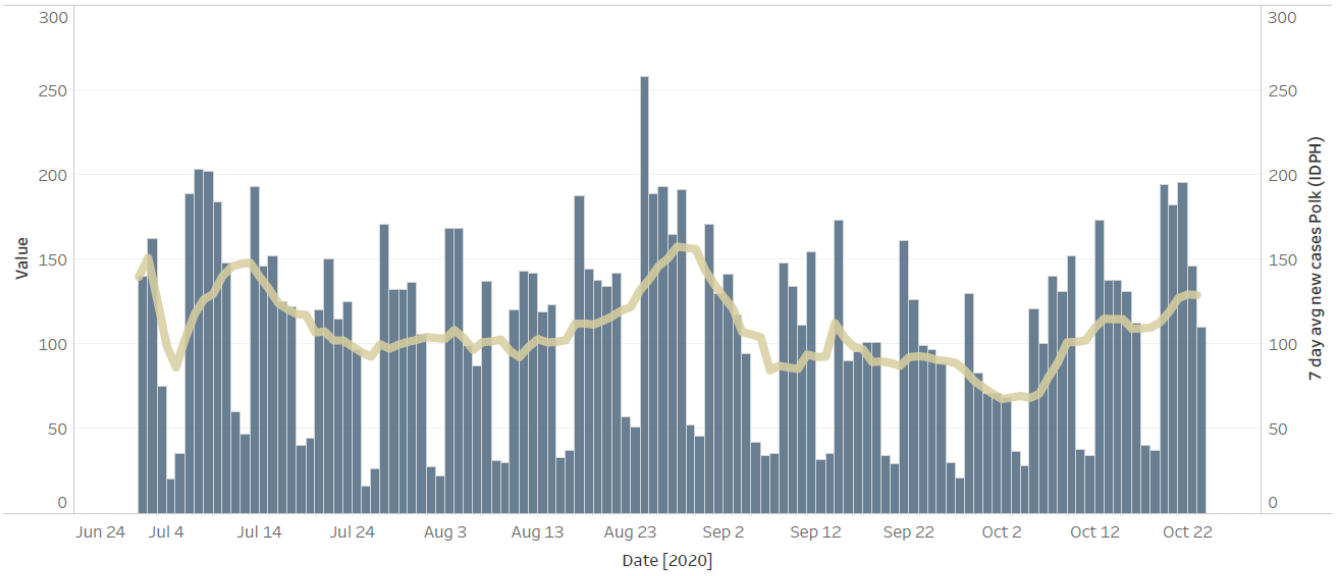
Research & Media

- Mask-wearing has a substantial impact on outbreak control. Shelter-in-place strategies remain an important public health intervention, amid ongoing outbreaks.
- <https://www.sciencedirect.com/science/article/pii/S1201971220322049>
- A study of secondary household infections found multiple tests may be needed to detect cases.
- <https://academic.oup.com/cid/advance-article/doi/10.1093/cid/ciaa1558/5921151>
- A study examined mental illness related to COVID-19 death, which numbers four times that of the Vietnam War.
- <https://jamanetwork.com/journals/jama/fullarticle/2771763>
- Between March 1 and August 1, 2020, the US experienced a 20% increase over expected deaths.
- <https://jamanetwork.com/journals/jama/fullarticle/2771761>
- While the estimated economic pandemic impact exceeds 16 Trillion, the economic benefit of contact tracing and testing is 30 times that of the expense to perform those services. This estimate is on par with the anticipated impact of climate change. In addition, an investment of 6 Million into testing and contact tracing could result in 176 Million in averted costs.
- <https://jamanetwork.com/journals/jama/fullarticle/2771764>

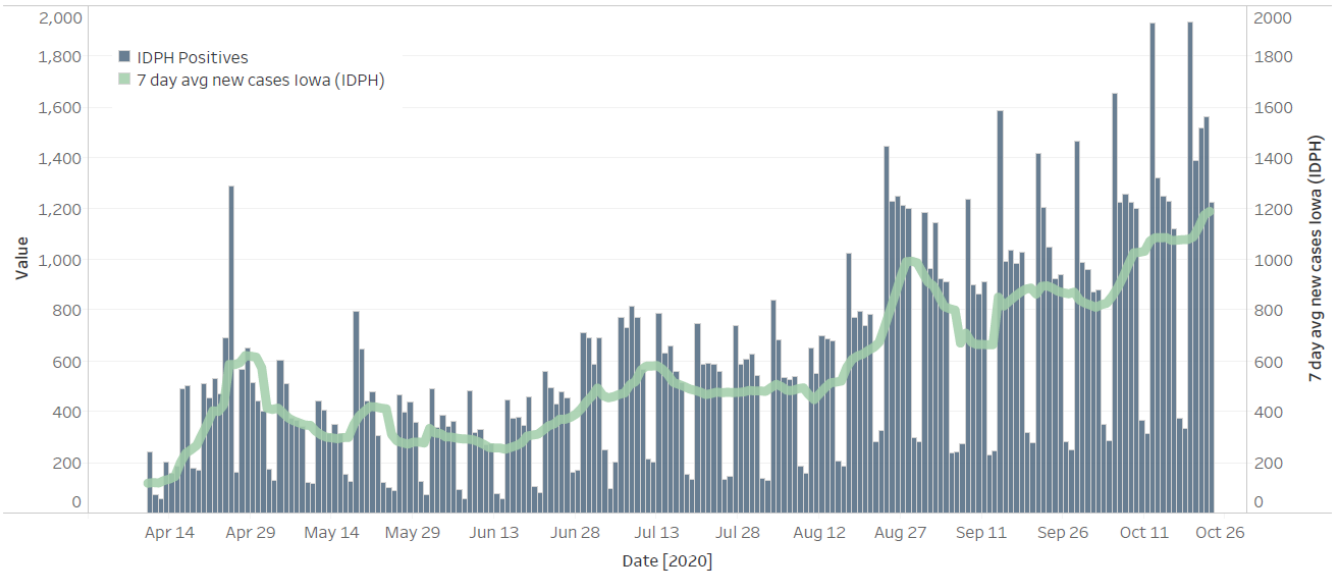
Central Iowa COVID19 Update



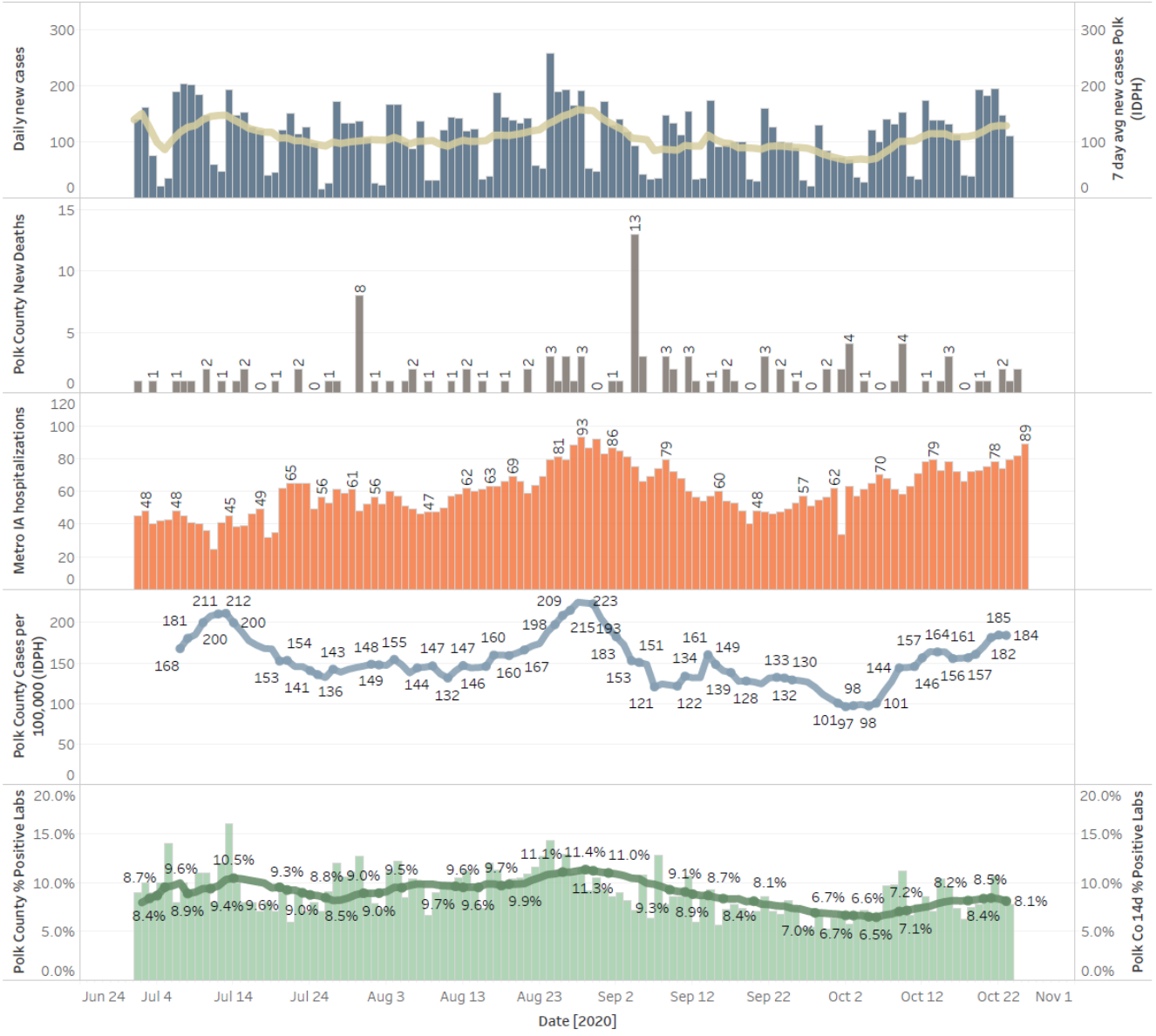
Polk County Cases by Day and 7d Moving Average



Iowa Cases by Day and 7d Moving Average



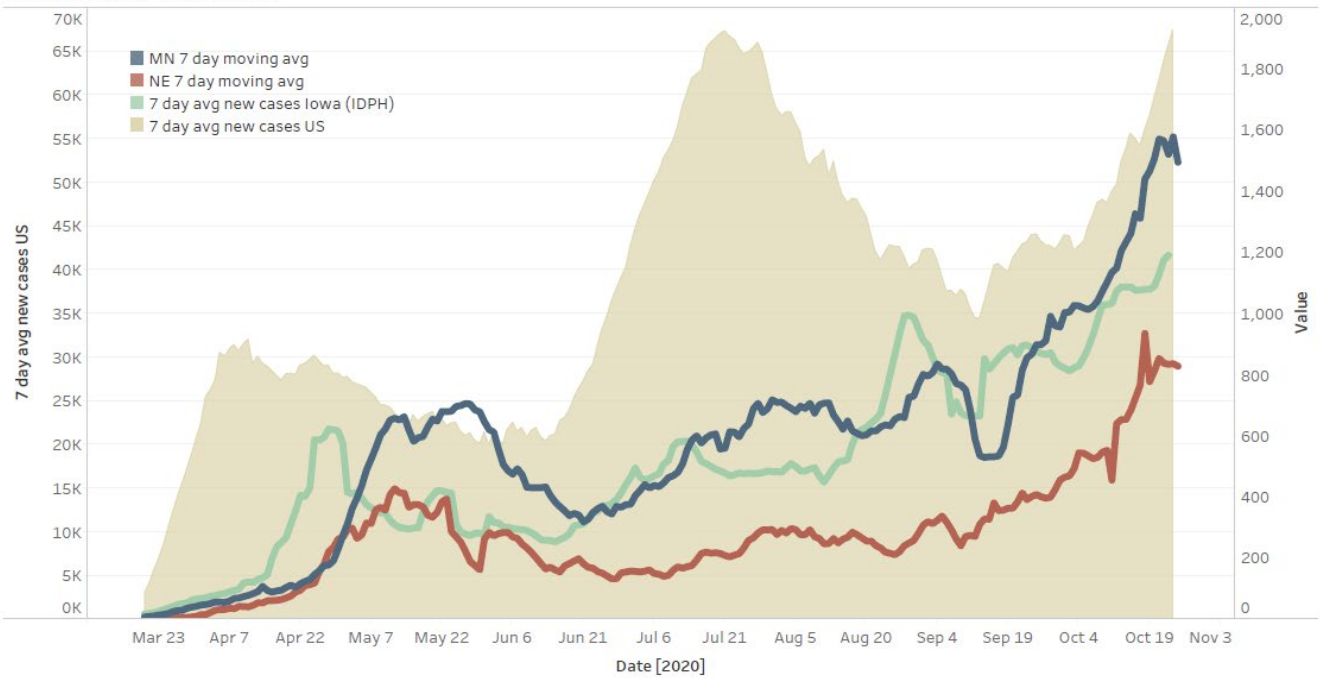
Polk County Activity View



Central Iowa COVID19 Update



US and Border State Cases



US, Iowa, MN, NE New Daily Cases

