



# Central Iowa COVID19 Update

---

Wednesday, May 12, 2021



Statistical Consulting

Dr. Meg Schaeffer





## Quick Stats<sup>1</sup>

	Polk County	Iowa
Percent of population with 1 dose*	12%	8%
Percent of population with 2 doses*	34%	36%
7d Lab Test Positivity	3.5%	3.4%
14d Lab Test Positivity	4.5%	3.7%
Total cases per 100,000 the last 7d	82	72
Total cases per 100,000 the last 14d	187	160
Average daily cases the last 7d	57	323
Average 7-day new cases per 100,000	12	10

\*Percent of entire population vaccinated to represent progress to herd immunity.

All data are sourced from <https://coronavirus.iowa.gov/pages/case-counts> with previous days refreshed daily. When recent data are unavailable, data from <https://github.com/nytimes/covid-19-data> may be used. Population of Polk County used is 490,161.

Population of Iowa used is 3.155 million. Averages and percent positivity are subject to change with retrospectively refreshed data.

## Critical Points, Media, and Research

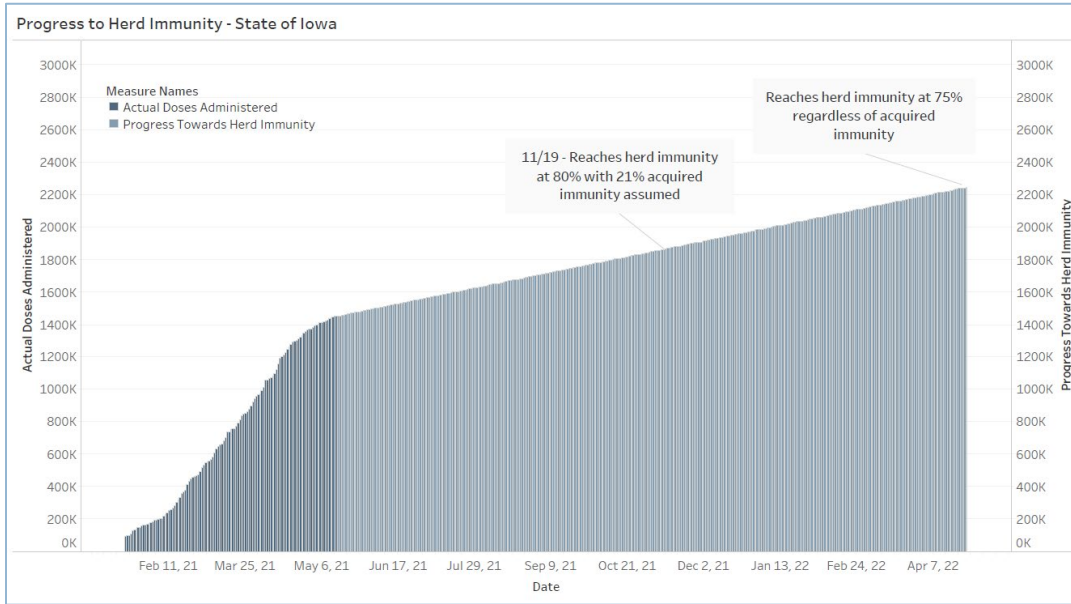
- Case rate declines are holding. Hospitalizations are stabilizing again.
- [May 12: Iowa getting closer to 6,000 overall deaths from COVID-19 | KGAN](#)
- [CDC recommends use of Pfizer's Covid-19 vaccine in 12-15-year-olds - CNN](#) The FDA has approved expansion of the Pfizer COVID-19 vaccine; CDC's ACIP committee approved the vaccine today. The modified EUA will be released by FDA likely Thursday 5/12.
- [Household COVID-19 risk and in-person schooling | Science \(sciencemag.org\)](#). Implementation of risk-mitigation measures in a school setting may dramatically reduce risk for school children and the greater community.
- [Comparison of COVID-19 Incidence Rates Before and After School Reopening in Israel | Adolescent Medicine | JAMA Network Open](#). Findings support policies to prioritize school attendance for younger children.
- [Impact of vaccination on household transmission in England](#). Real-world data from a cross-section of the population show receipt of at least 1 dose of either the Oxford-AstraZeneca or Pfizer-BioNTech vaccine reduces risk of SARS-CoV-2 household transmission.
- [Re-infection with SARS-CoV-2 in Patients Undergoing Serial Laboratory Testing | Clinical Infectious Diseases](#). Reinfection is estimated at 0.47-0.7%. People who have recovered from SARS-CoV-2 infection should continue with prevention measures such as social distancing, masking, and getting vaccinated.
- [Late conditions diagnosed 1–4 months following an initial COVID-19 encounter: a matched cohort study using inpatient and outpatient administrative data — United States, March 1–June 30, 2020 | Clinical Infectious Diseases](#). Patients with a history of COVID-19 may have persistent symptoms, in addition to general post-viral fatigue, that interfere with daily activities and negatively impact quality of life for months.
- [Physical inactivity is associated with a higher risk for severe COVID-19 outcomes: a study in 48 440 adult patients | British Journal of Sports Medicine \(bmj.com\)](#)
- [Efficacy of universal masking for source control and personal protection from simulated cough and exhaled aerosols in a room](#)
- [Real World Effectiveness of COVID-19 mRNA Vaccines against Hospitalizations and Deaths in the United States](#). In a large, diverse cohort in the United States, full immunization with mRNA vaccines was highly effective in the real-world scenario at preventing Covid-19 related hospitalization and death.

# Central Iowa COVID19 Update



## Vaccine Progress

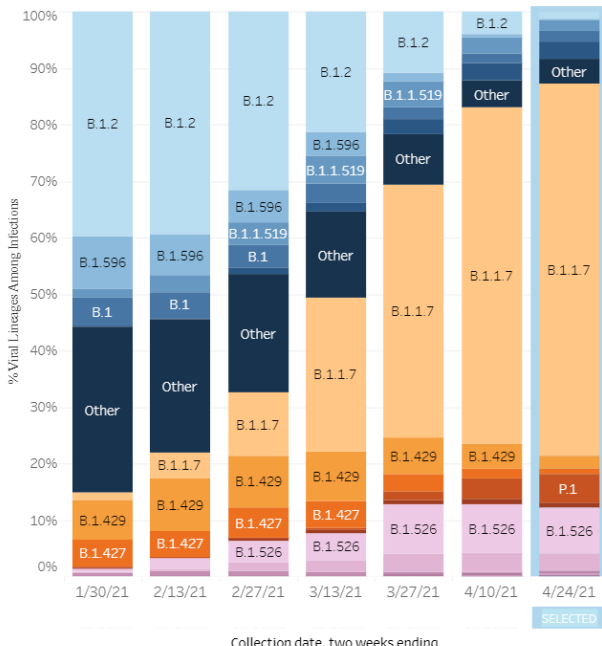
- Estimated Census Population 16yrs old and over= 382,008 (78% of total Polk Co population)
- Total Partially/Fully Vaccinated in Polk Co by 05/10/21= 225,297 residents
- Percentage of vaccination (P/F) based on 16yrs and over population= 59%
- Breakdown of vaccinated Polk County residents (225,297 residents)
  - Partially vaccinated: 20.7%
  - Fully vaccinated: 79.3%



## Variant Prevalence

United States: 1/17/2021 – 4/24/2021

United States: 4/11/2021 – 4/24/2021



USA

	Lineage	Type	%Total	95%CI	
Most common lineages	B.1.1.7	VOC	66.0%	62.0-69.7%	<span style="color: orange;">■</span>
	B.1.526	VOI	8.2%	5.9-11.1%	<span style="color: pink;">■</span>
	P.1	VOC	5.0%	3.3-7.5%	<span style="color: red;">■</span>
	B.1.526.1	VOI	3.0%	2.2-4.0%	<span style="color: purple;">■</span>
	B.1.526.2	VOI	3.0%	2.2-4.0%	<span style="color: blue;">■</span>
	B.1.429	VOC	2.3%	1.5-3.6%	<span style="color: yellow;">■</span>
	B.1.1.519	VOI	1.9%	1.4-2.6%	<span style="color: darkblue;">■</span>
	B.1	VOI	1.8%	1.5-2.2%	<span style="color: darkred;">■</span>
	B.1.2	VOI	1.3%	1.1-1.7%	<span style="color: lightblue;">■</span>
	B.1.596	VOI	0.2%	0.1-0.3%	<span style="color: lightblue;">■</span>
Additional VOI/VOC lineages	B.1.427	VOC	0.9%	0.6-1.4%	<span style="color: orange;">■</span>
	B.1.351	VOC	0.9%	0.6-1.4%	<span style="color: red;">■</span>
	B.1.617.2	VOI	0.5%	0.3-0.7%	<span style="color: pink;">■</span>
	B.1.525	VOI	0.3%	0.2-0.5%	<span style="color: purple;">■</span>
	B.1.617.1	VOI	0.2%	0.1-0.2%	<span style="color: purple;">■</span>
	P.2	VOI	0.1%	0.0-0.2%	<span style="color: purple;">■</span>
	B.1.617.3 †	VOI	0.0%	0.0-0.1%	<span style="color: purple;">■</span>
	B.1.617 †	VOI	0.0%	NA	<span style="color: purple;">■</span>
	Other*	Other	4.5%	3.8-5.2%	<span style="color: darkblue;">■</span>

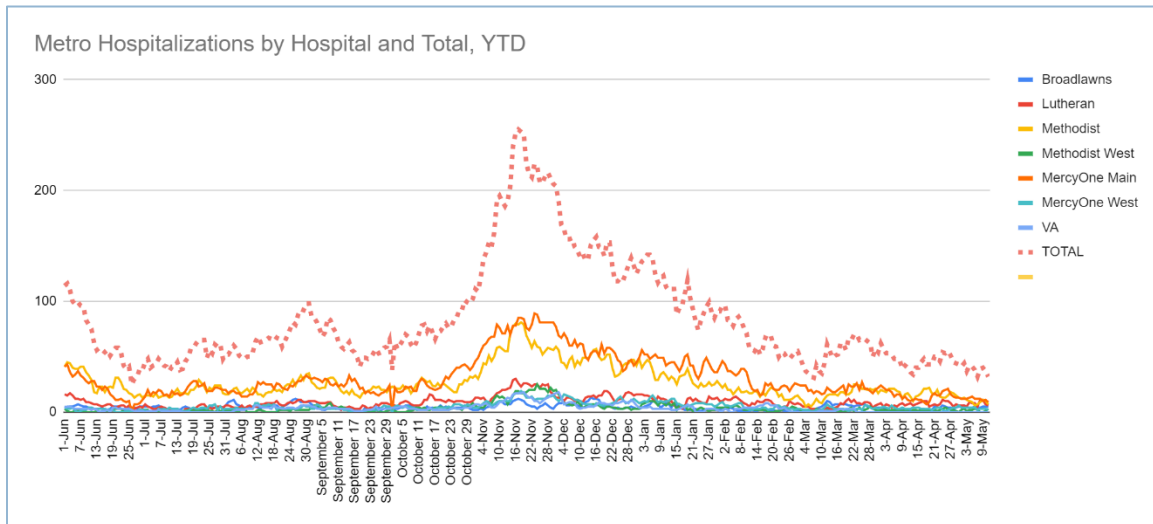
\* Other represents >200 additional lineages, which are each circulating a <1% of viruses  
 † Fewer than 10 observations of this variant during the selected time/location context



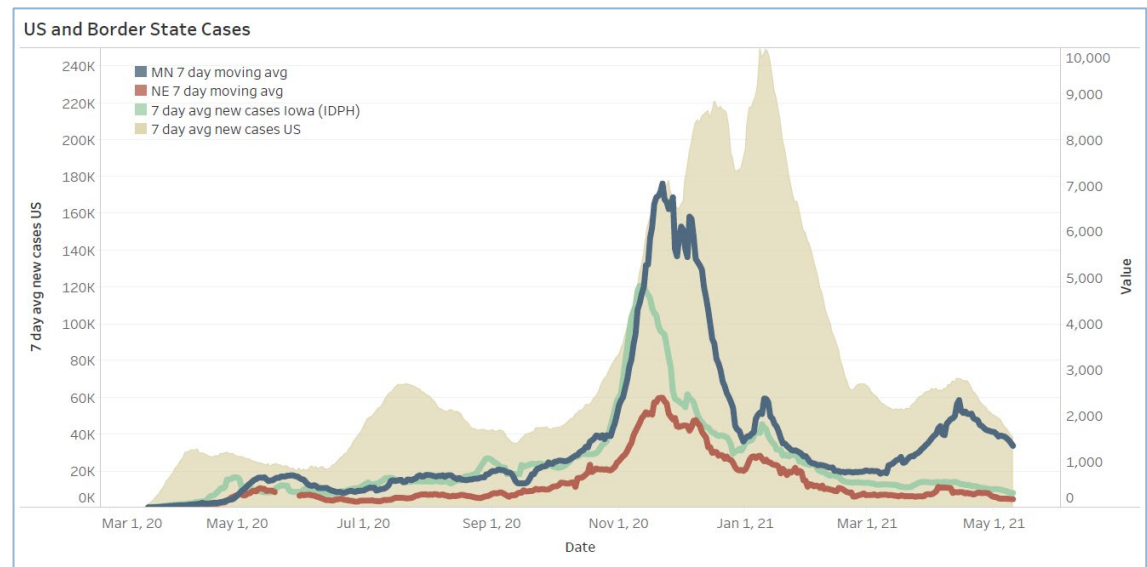
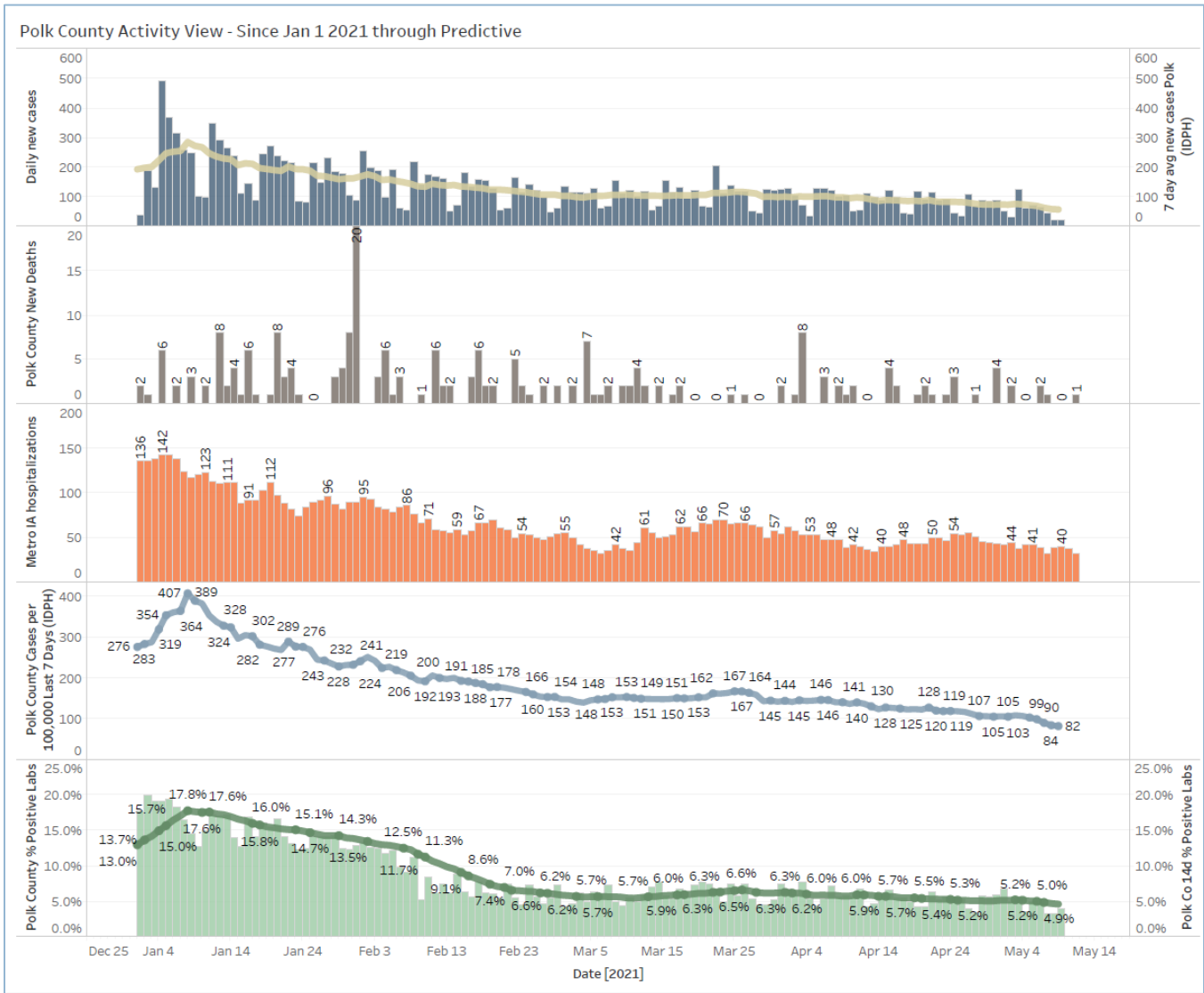
### School Statistics – Polk County (Updated weekly on Mondays)

Rate of Student/Staff Cases Per 1,000													
Week Ending	7-Feb	14-Feb	22-Feb	1-Mar	7-Mar	15-Mar	29-Mar	5-Apr	12-Apr	19-Apr	26-Apr	3-May	10-May
DMPS	2.5	0.8	1.3	0.6	0.7	0.5	0.1	0.2	0.1	0.2	0.2	0.1	0.1
Ankeny	2.3	1.6	2.0	1.0	0.7	1.0	1.5	1.5	1.2	0.4	0.8	1.8	0.6
Waukee	3.0	3.0	3.0	2.3	1.7	1.7	1.9	0.8	0.6	1.1	0.4	0.4	1.0
WDM	1.6	2.4	1.1	1.3	1.1	1.6	1.2	0.6	1.1	1.2	0.6	0.9	0.2
Johnston	2.3	1.6	3.3	3.7	1.6	1.1	2.4	0.3	1.1	1.7	0.3	1.1	1.3
SE Polk	3.4	3.0	2.1	2.4	2.1	2.3	1.3	2.0	1.3	0.3	1.3	1.4	2.0
Urbandale	3.3	4.0	2.3	2.5	2.8	2.8	0.3	2.0	2.0	0.5	0.5	1.5	0.3
DCG	1.3	1.9	2.5	1.9	1.3	2.5	4.1	1.3	1.6	2.5	0.6	0.9	2.2
Bondurant	19.0	11.6	11.6	0.9	0.5	2.3	3.7	1.9	2.3	0.0	3.7	1.9	0.5
North Polk	10.1	1.7	3.9	11.3	1.1	0.6	1.7	1.1	0.0	0.6	0.0	0.0	0.0
Ballard	6.4	6.4	5.8	2.3	1.2	1.2	4.1	1.2	1.2	0.6	0.6	0.6	0.6
Saydel	1.5	3.0	2.2	3.7	0.7	0.0	1.5	0.0	0.0	0.0	2.2	3.7	2.2

Students/Staff in Quarantine														
Week Ending	7-Feb	14-Feb	22-Feb	1-Mar	7-Mar	15-Mar	22-Mar	29-Mar	5-Apr	12-Apr	19-Apr	26-Apr	3-May	10-May
DMPS	220	198	235	223	193	203	116	134	141	115	154	137	143	125
Ankeny	178	106	88	75	45	53		36	101	94	29	62	85	31
Waukee	127	128	94	102	65	79	32	62	41	24	41	25	34	47
WDM	69	39	46	22	25	41	7	33	28	22	27	14	14	8
Johnston	100	106	150	137	84	85		68	48	68	78	34	40	55
SE Polk	84	86	92	105	93	77		45	54	34	39	33	29	22
Urbandale	67	77	59	54	51	51		27	38	35	24	20	31	23
DCG	45	59	79	44	37	37		29	27	30	31	18	17	13
Bondurant	86	69	69	11	18	18		0	21	38	22	35	24	20
North Polk	52	50	39	39	34	31	26	13	16	12	10	13	8	0
Ballard	18	40	30	9	16	18		2	2	2	12	1	1	1
Saydel	33	19	23	18	18	15	6	7	3	4	9	10	15	10
Total	1079	977	1004	839	679	708	187	456	520	478	476	402	441	355



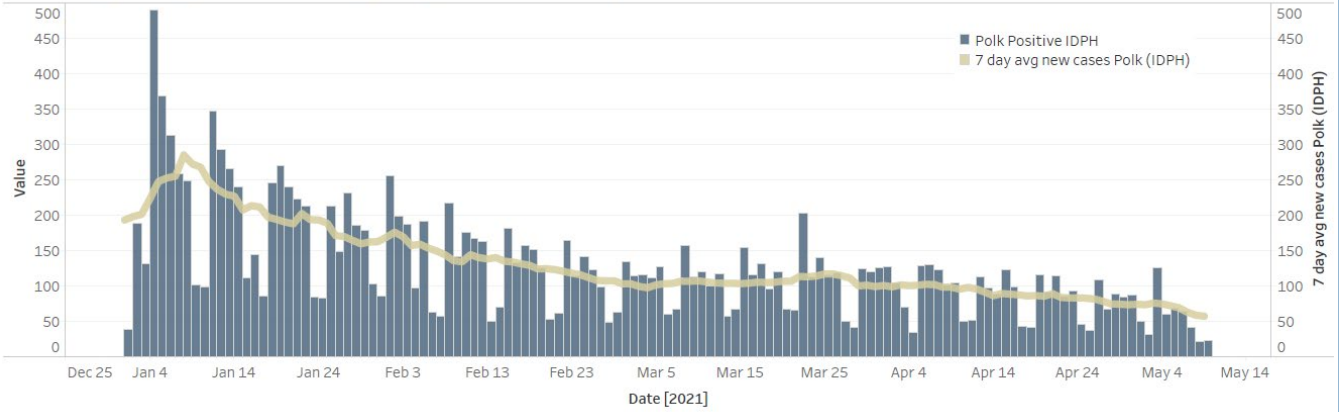
# Central Iowa COVID19 Update



# Central Iowa COVID19 Update



### Polk County Cases by Day and 7d Moving Average - Jan 1 2021 through Present



### Iowa Cases by Day and 7d Moving Average

