



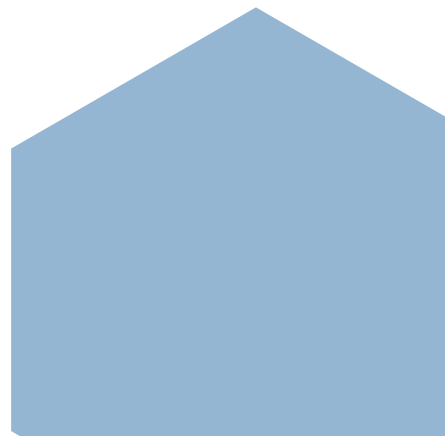
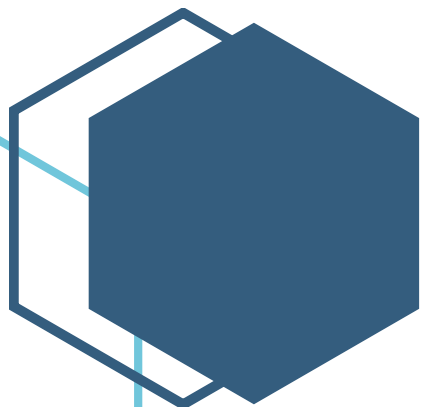
Central Iowa COVID19 Update

Tuesday, February 23, 2021



Statistical Consulting

Dr. Meg Schaeffer





Quick Stats¹

	Polk County	Iowa
7d Lab Test Positivity	6.3%	4.7%
14d Lab Test Positivity	6.6%	4.5%
Total cases per 100,000 the last 7d	171	N/A*
Total cases per 100,000 the last 14d	370	483
Average daily cases the last 7d	119	N/A*
Average 7-day new cases per 100,000	24	15

¹All data are sourced from <https://coronavirus.iowa.gov/pages/case-counts> with previous days refreshed daily. When recent data are unavailable, data from <https://github.com/nytimes/covid-19-data> may be used. Population of Polk County used is 490,161. Population of Iowa used is 3.155 million. Averages and percent positivity are subject to change with retrospectively refreshed data.

*State data provided for this week is not accurate within download files. Quick stats will be available once revised files are posted.

Critical Points, Media, and Research

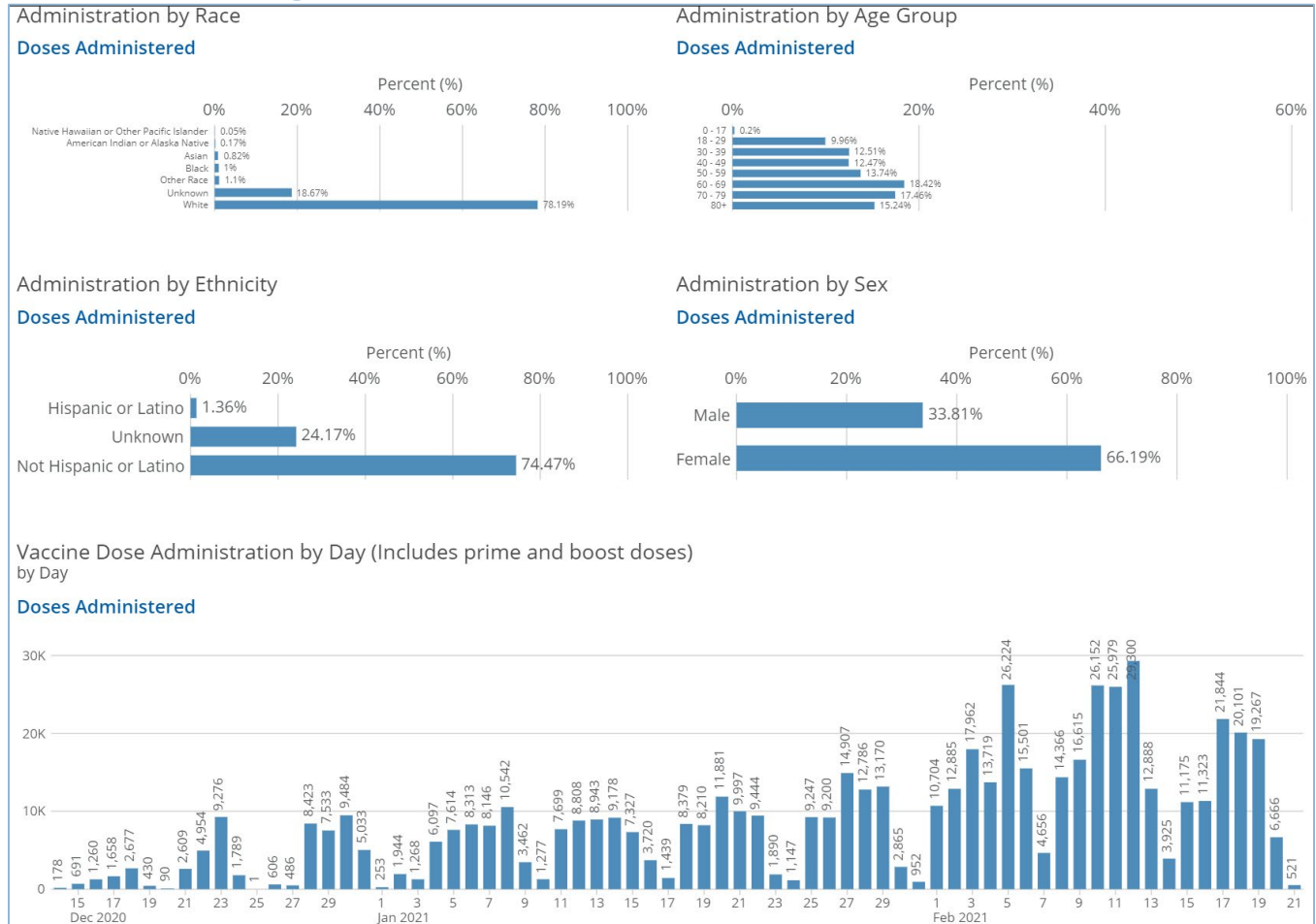
- Iowa and Polk activity continue to decrease. Hospitalizations remain low.
- Iowa has identified 10 cases of the UK variant.
- Influenza activity remains extremely low. [CADE - Iowa Flu Reports](#)

Vaccine

- [Did people's behavior after receiving negative COVID-19 tests contribute to the spread? | Journal of Public Health | Oxford Academic \(oup.com\)](#)
- [Risk compensation and face mask mandates during the COVID-19 pandemic | Scientific Reports \(nature.com\)](#)
- [Estimated seroprevalence of SARS-CoV-2 antibodies among adults in Orange County, California | Scientific Reports \(nature.com\)](#)
 - Reported at 11.5%
- [Reports of Anaphylaxis After Receipt of mRNA COVID-19 Vaccines in the US—December 14, 2020-January 18, 2021 | Allergy and Clinical Immunology | JAMA](#)
 - Rates of anaphylaxis as reported to VAERS/CDC were -
 - 47 following Pfizer-BioNTech vaccine, for a reporting rate of 4.7 cases/million doses administered, and 19 following Moderna vaccine, for a reporting rate of 2.5 cases/million doses administered
 - These rates are extremely low and align closely with clinical trial findings
- [Genomic Signatures of SARS-CoV-2 Associated with Patient Mortality](#)
 - Researchers have identified two clades resulting in higher mortality rates
- Two studies show strong immune response after one dose -
 - [Efficacy of ChAdOx1 nCoV-19 \(AZD1222\) Vaccine Against SARS-CoV-2 VOC 202012/01 \(B.1.1.7\)](#)
 - [Neutralization of viruses with European, South African, and United States SARS-CoV-2 variant spike proteins by convalescent sera and BNT162b2 mRNA vaccine-elicited antibodies](#)
- [Covid-19 Vaccine: Answers to Key Questions](#)
- [Vaccination progress in the US](#)



Vaccination Progress – Polk County



Vaccination Progress – Iowa

County	Series Initiated	Series Completed
Polk	53,104	25,087

Total Doses Administered

589,056

Individuals Initiating Vaccination (1st Dose)

295,850

Doses Administered to Iowa Residents

566,502

Individuals Completing Vaccination (2nd Dose)

146,603

Doses Administered by Manufacturer

Vaccine Manufacturer	Doses
Pfizer	248,812
Moderna	340,244
Total	589,056

Central Iowa COVID19 Update

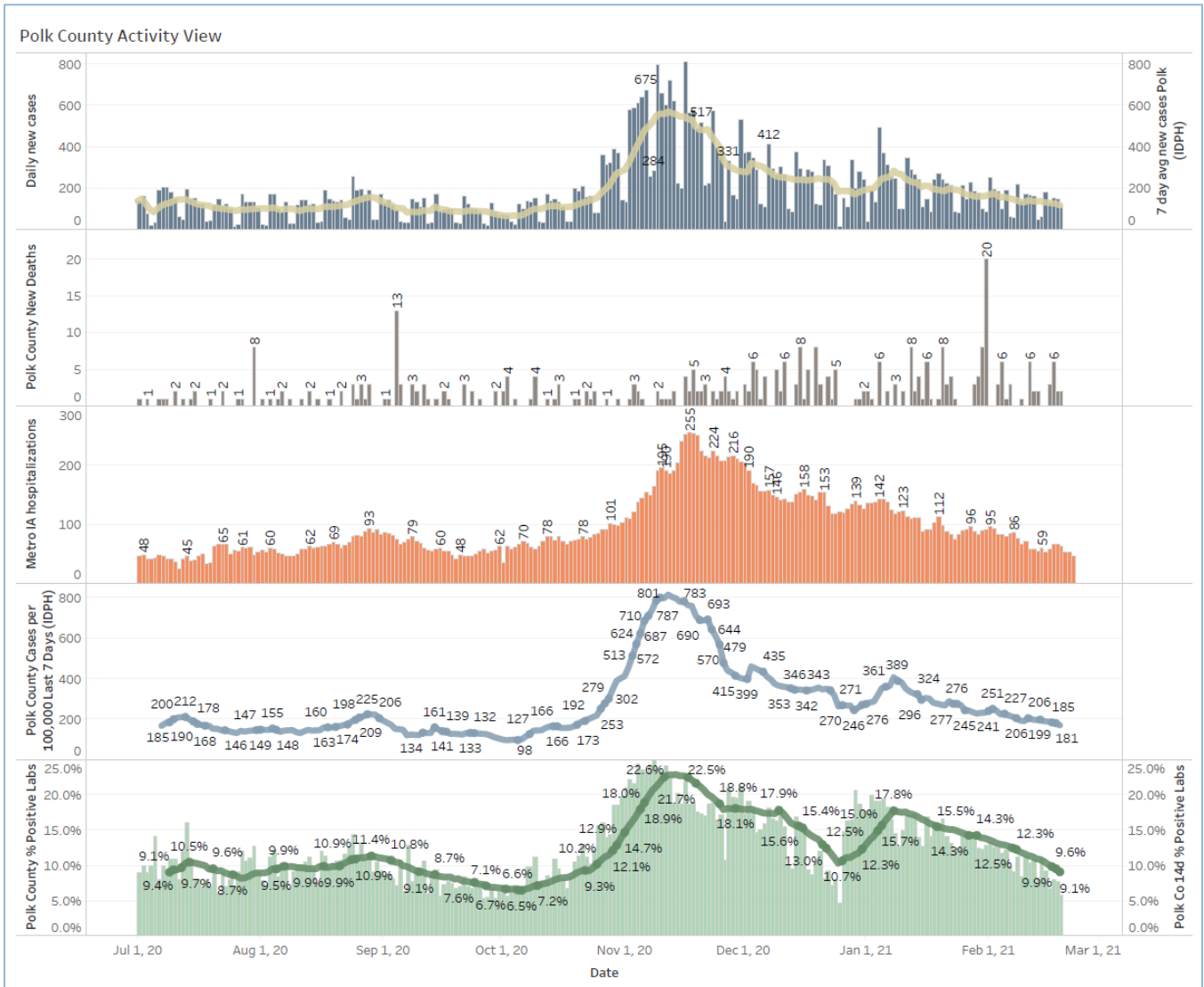


School Statistics – Polk County (Updated per week on Mondays)

Rate of Student/Staff Cases Per 1,000															
Week Ending	1-Nov	8-Nov	15-Nov	22-Nov	29-Nov	13-Dec	20-Dec	27-Dec	10-Jan	17-Jan	24-Jan	31-Jan	7-Feb	14-Feb	22-Feb
DMPS	0.2	4.0	0.5	0.5	0.2	0.7	0.7	0.4	4.0	1.9	2.6	0.2	2.5	0.8	1.3
Ankeny	3.8	3.8	4.3	4.3	4.5	3.3	1.9	1.8	5.9	3.8	3.1	2.8	2.3	1.6	2.0
Waukee	5.8	10.3	9.4	6.5	4.6	3.5	1.7	1.7	4.5	5.0	2.4	3.3	3.0	3.0	3.0
WDM	2.8	5.7	11.0	4.7	1.1	2.7	1.9	0.6	4.0	4.2	1.6	2.2	1.6	2.4	1.1
Johnston	6.3	8.3	10.4	7.1	5.4	2.3	1.7	0.3	4.6	3.4	2.1	3.3	2.3	1.6	3.3
SE Polk	4.7	5.0	8.3	7.9	7.7	3.0	4.6	2.7	3.4	5.0	3.9	2.9	3.4	3.0	2.1
Urbandale	1.8	2.0	10.8	8.5	5.8	3.5	3.5	2.0	6.0	3.0	2.5	2.8	3.3	4.0	2.3
DCG		6.0	10.4	9.5	13.3	4.7	0.9	2.8	2.2	2.2	2.5	1.3	1.3	1.9	2.5
Bondurant		8.3	7.9	13.4	13.4	3.7	2.8	7.4	0.0		0.9	12.5	19.0	11.6	11.6
North Polk		4.5	5.6	5.6	4.5	1.1	1.7	2.3	3.9	1.1	7.9	5.6	10.1	1.7	3.9
Ballard		0.0	0.0	8.2	0.6	1.2	1.2	0.0	0.0	4.1	1.2	1.2	6.4	6.4	5.8
Saydel		7.5	12.7	3.0	0.0	2.2	3.0	2.2	3.7	3.7	3.7	0.7	1.5	3.0	2.2

Students/Staff in Quarantine															
Week Ending	1-Nov	8-Nov	15-Nov	22-Nov	29-Nov	13-Dec	20-Dec	27-Dec	10-Jan	17-Jan	24-Jan	31-Jan	7-Feb	14-Feb	22-Feb
DMPS	N/A	N/A	N/A	N/A	N/A	N/A	N/A	N/A	N/A	N/A	N/A	N/A	220	198	235
Ankeny	225	225	370	370	273	172	107	87	132	116	125	138	178	106	88
Waukee	332	500	575	384	160	76	113	136	156	195	95	108	127	128	94
WDM	146	204	239	70	12	38	19	14	114	55	54	83	69	39	46
Johnston	586	667	527	318	286	73	78	73	116	147	126	109	100	106	150
SE Polk	186	211	307	380	401	126	121	129	89	125	129	96	84	86	92
Urbandale	39	97	180	223	179	49	32	34	43	71	78	50	67	77	59
DCG		80	159	216	82	69	46	41	33	43	42	44	45	59	79
Bondurant		148	160	167	138	97	55	62	<6	N/A	28	68	86	69	69
North Polk		103	101	90	61	55	51	46	30	19	35	57	52	50	39
Ballard				77	40	34	16		28	12	25	20	18	40	30
Saydel		109	88	65	46	30	33	24	39	26	27	26	33	19	23
Total	1514	2344	2706	2360	1678	819	671	646	780	809	764	799	1079	977	1004

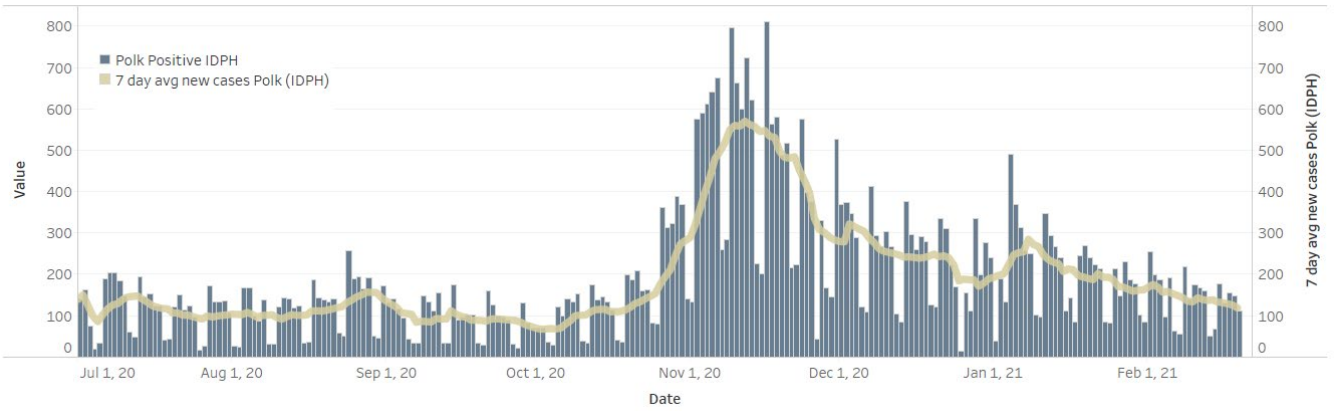
Central Iowa COVID19 Update



Central Iowa COVID19 Update



Polk County Cases by Day and 7d Moving Average



Iowa Cases by Day and 7d Moving Average

