



# Central Iowa COVID19 Update

---

Wednesday, September 8, 2021



Statistical Consulting

Dr. Meg Schaeffer





## Quick Stats<sup>1</sup>

	Polk County	Iowa
Percent of population with 1 dose	5.7%	4.5%
Percent of population with 2 doses	55.9%	52.1%
7d Lab Test Positivity	10.6%	8.9%
Total cases per 100,000 the last 7d	298	257
CDC County Transmission Level*	High	
Average daily cases the last 7d	208	1159

\*[VaccineInformation | Iowa COVID-19 Information](#)

All data are sourced from <https://coronavirus.iowa.gov/pages/case-counts> with previous days refreshed daily. When recent data are unavailable, data from <https://github.com/nytimes/covid-19-data> may be used. Population of Polk County used is 490,161.

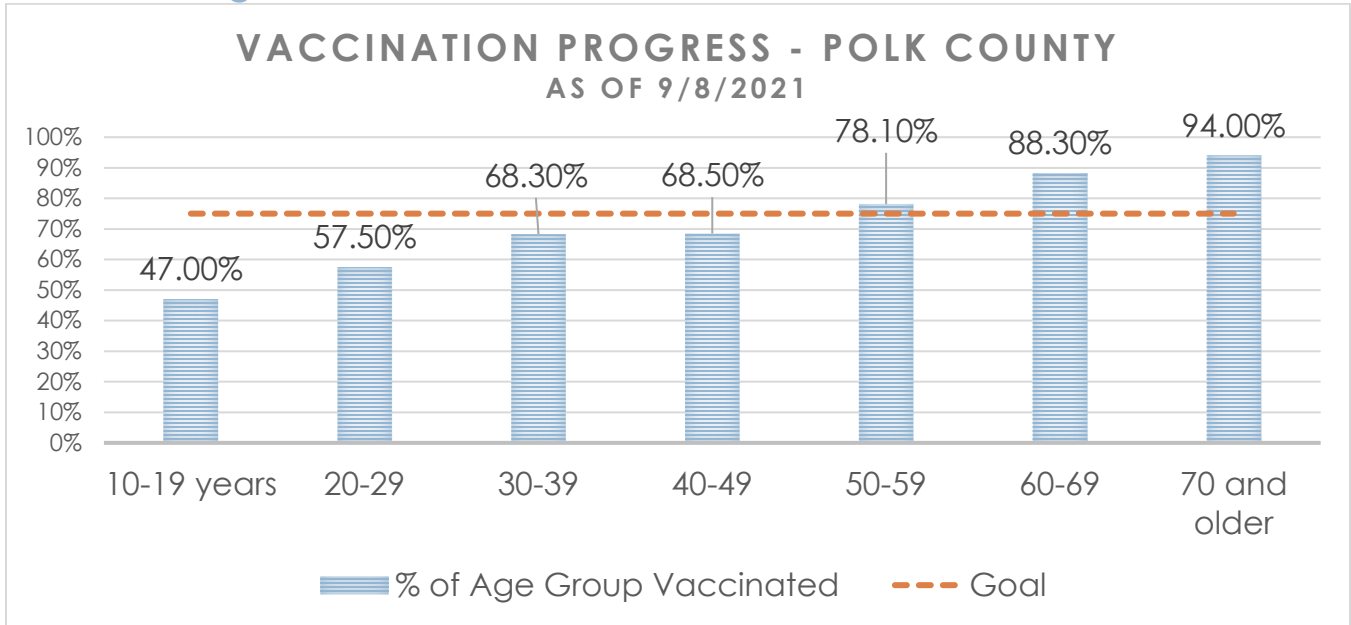
Population of Iowa used is 3.155 million. Averages and percent positivity are subject to change with retrospectively refreshed data.

## Critical Points, Media, and Research

- Note – vaccination data were changed on the IDPH dashboard this past week and CDC rates were used in this report.
- There was a drop in cases reported over the holiday weekend, which is unlikely to result in a complete change in course. Activity is slowing in the US and in Iowa. The majority of cases are occurring in children and adolescents under the age of 18 with 29% of Iowa cases in that age group and 31% in Polk County.
- [Mu variant COVID-19 confirmed in Iowa](#)
- [Trends in COVID-19 Cases, Emergency Department Visits, and Hospital Admissions Among Children and Adolescents Aged 0–17 Years — United States, August 2020–August 2021 | MMWR \(cdc.gov\)](#)
- [Effectiveness of Pfizer-BioNTech and Moderna Vaccines in Preventing SARS-CoV-2 Infection Among Nursing Home Residents Before and During Widespread Circulation of the SARS-CoV-2 B.1.617.2 \(Delta\) Variant — National Healthcare Safety Network, March 1–August 1, 2021 | MMWR \(cdc.gov\)](#)
- [Sustained Effectiveness of Pfizer-BioNTech and Moderna Vaccines Against COVID-19 Associated Hospitalizations Among Adults — United States, March–July 2021 | MMWR \(cdc.gov\)](#)
- [Effectiveness of COVID-19 Vaccines in Preventing SARS-CoV-2 Infection Among Frontline Workers Before and During B.1.617.2 \(Delta\) Variant Predominance — Eight U.S. Locations, December 2020–August 2021 | MMWR \(cdc.gov\)](#)
- [Use of Rapid Antigen Testing for SARS-CoV-2 in Remote Communities — Yukon-Kuskokwim Delta Region, Alaska, September 15, 2020–March 1, 2021 | MMWR \(cdc.gov\)](#)
- [Reduced Risk of Reinfection with SARS-CoV-2 After COVID-19 Vaccination — Kentucky, May–June 2021 | MMWR \(cdc.gov\)](#)
- [Estimating the impact of the COVID-19 pandemic on diagnosis and survival of five cancers in Chile from 2020 to 2030: a simulation-based analysis - The Lancet Oncology](#)
- [Prevention and Attenuation of Covid-19 with the BNT162b2 and mRNA-1273 Vaccines | NEJM](#)
- [Iowa schools relax COVID-19 quarantine rules to follow state guidance](#)



## Vaccine Progress

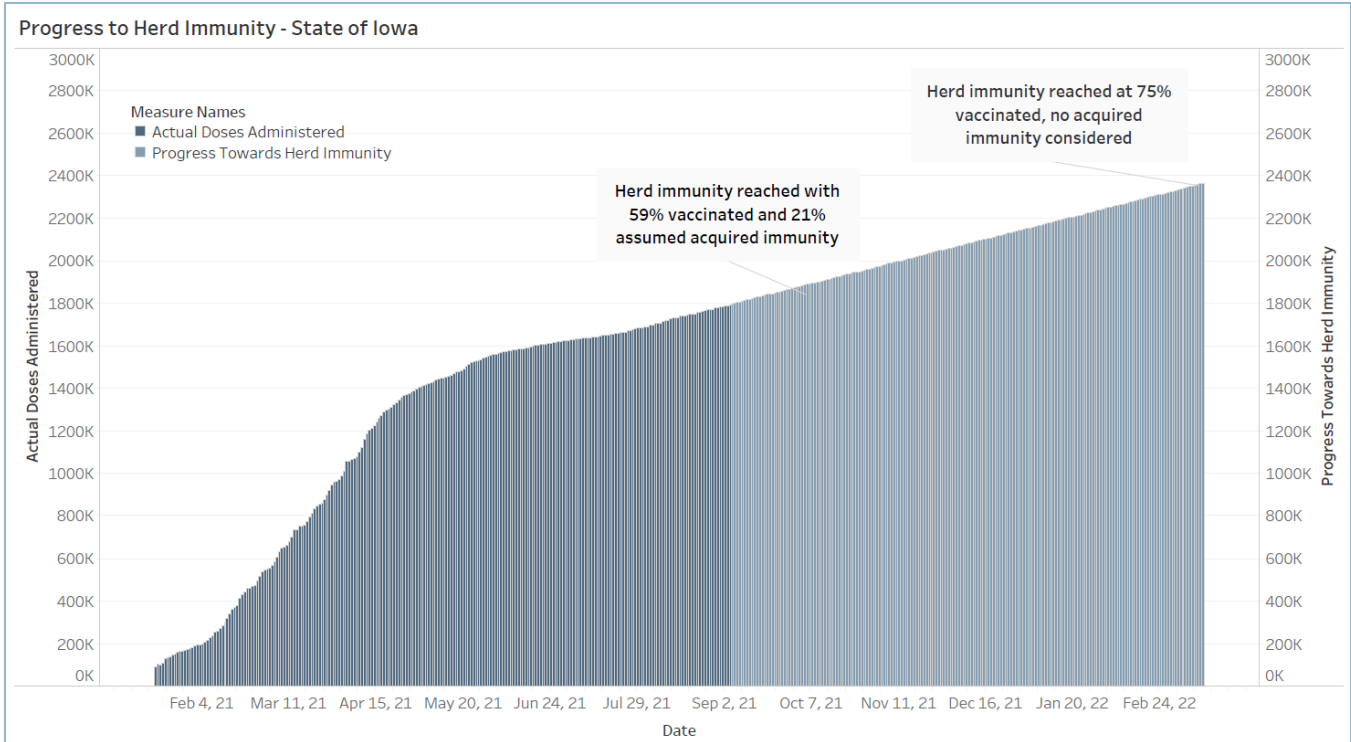


Number of Doses Administered (by date of report)	Initiated Vaccination (1st dose/No Janssen)	Completed Vaccination (2nd dose/Janssen)	Total Polk Co Residents Partially/Fully Vaccinated	Total Population of Polk County (all ages)
550,237	20,368	272,408	292,776	490,161

Age Group	Vaccinated	% Age Group Vaccinated	Estimated Census Population*
10-19 years	29,280	47.00%	62,295
20-29	39,689	57.50%	69,065
30-39	47,786	68.30%	69,982
40-49	44,763	68.50%	65,361
50-59	46,649	78.10%	59,727
60-69	43,490	88.30%	49,269
70 and older	41,119	94.00%	43,742
Total	292,776	69.80%	419,441

\*U.S Census Bureau Polk County (2019 1yr estimate). Census predetermined age data includes non-eligible ages 10 and 11 years old.

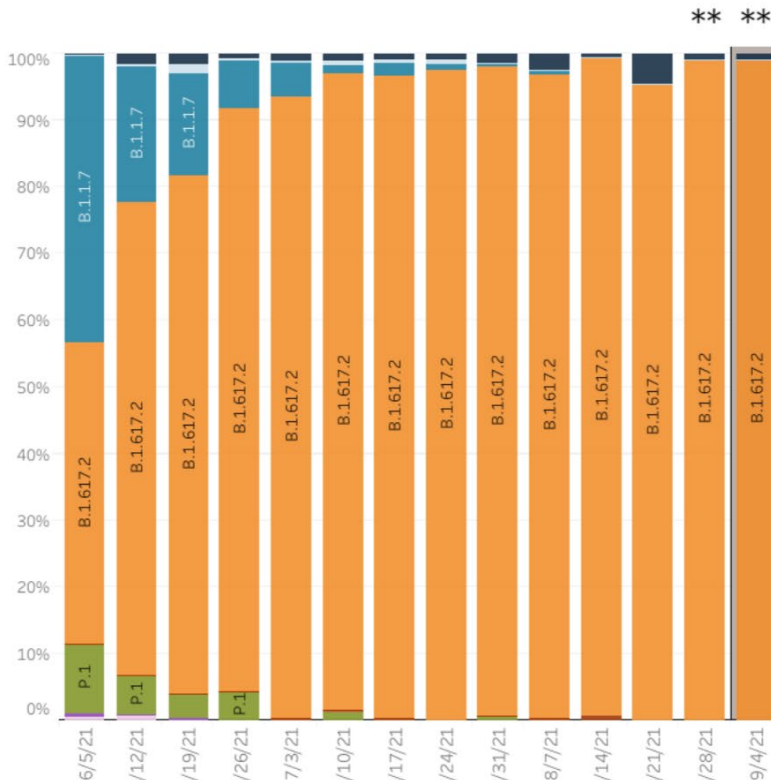
# Central Iowa COVID19 Update



## Variant Prevalence

HHS Region 7: 5/30/2021 – 9/4/2021

HHS Region 7: 8/29/2021 – 9/4/2021 NOWCAST



**Region 7 - Iowa, Kansas, Missouri, and Nebraska**

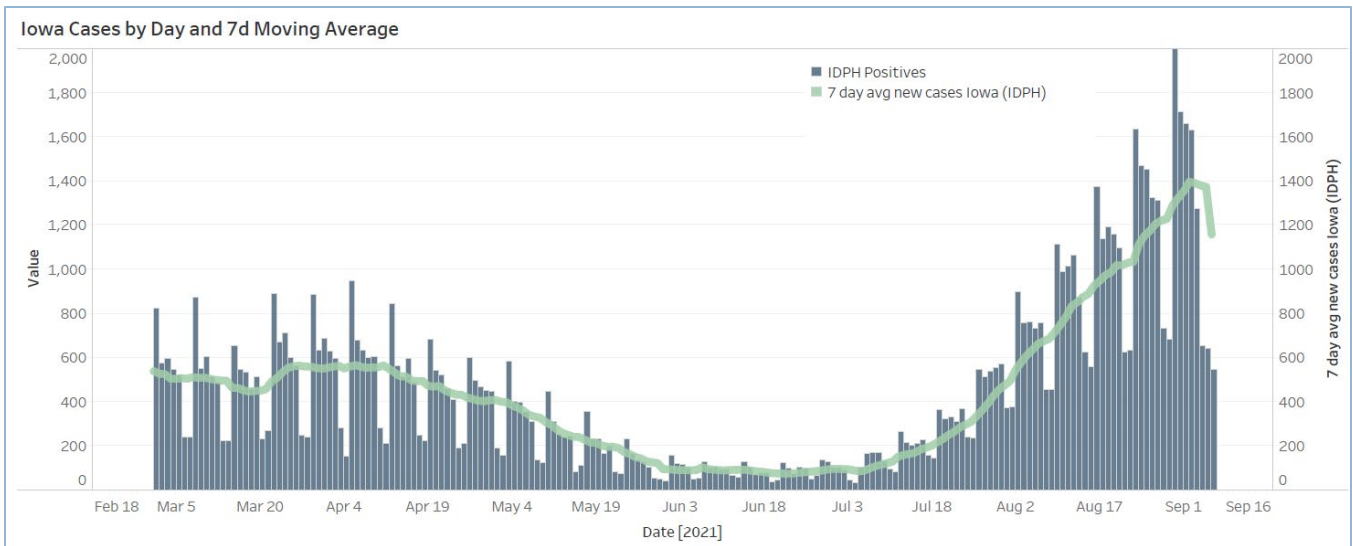
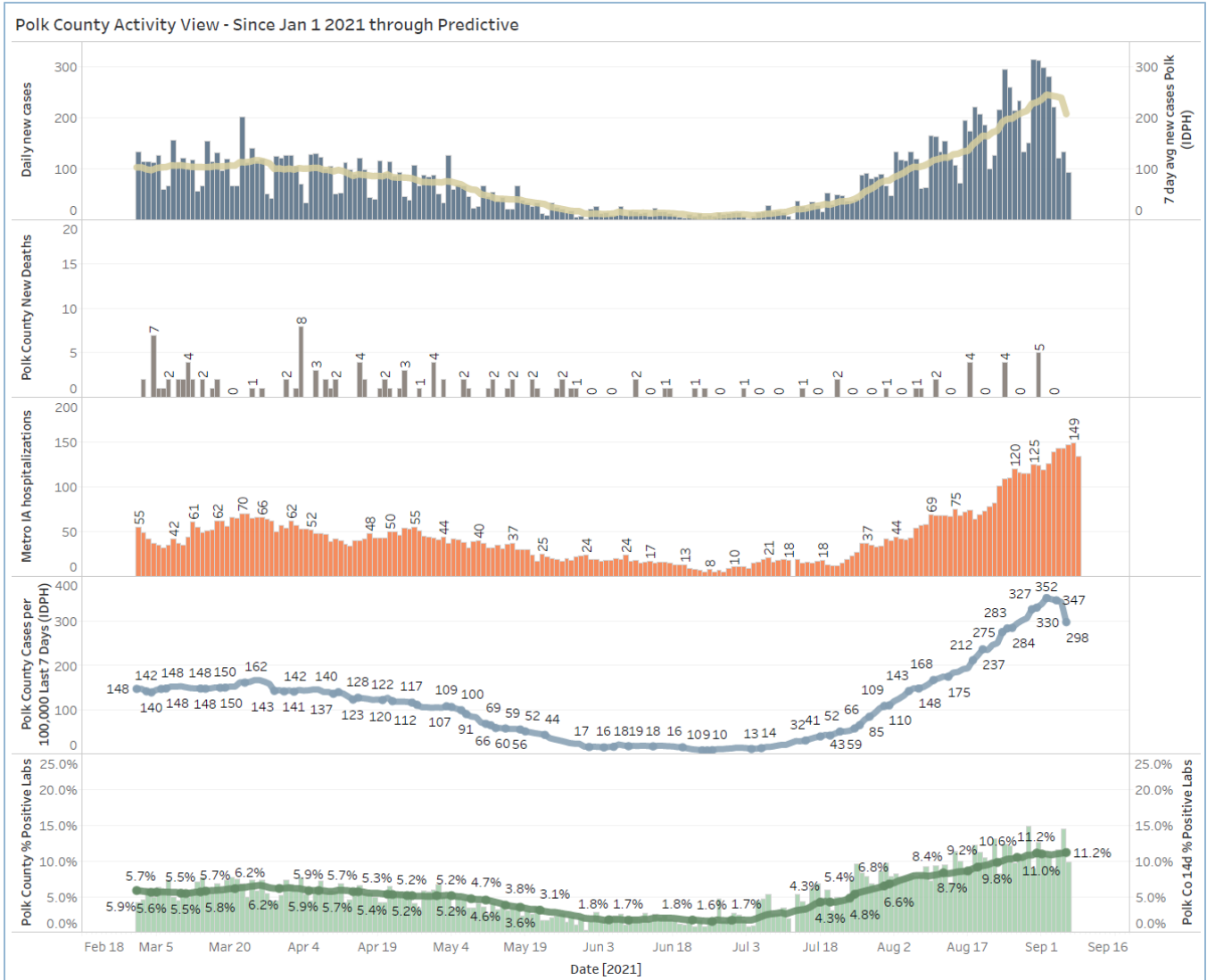
WHO label	Lineage #	Type	%Total	95%PI
Alpha	B.1.1.7	VOC	0.0%	0.0-3.2%
Beta	B.1.351	VOC	0.0%	0.0-3.2%
Gamma	P.1	VOC	0.0%	0.0-3.2%
Delta	B.1.617.2	VOC	99.0%	93.5-100.0%
	AY.1	VOC	0.0%	0.0-3.2%
	AY.2	VOC	0.0%	0.0-3.2%
Eta	B.1.525	VOI	0.0%	0.0-3.2%
Iota	B.1.526	VOI	0.0%	0.0-3.2%
Kappa	B.1.617.1	VOI	0.0%	0.0-3.2%
Mu	B.1.621		0.0%	0.0-3.2%
N/A	B.1.617.3	VOI	0.0%	0.0-3.2%
Other	Other*		0.9%	0.0-6.5%

\* Enumerated lineages are VOI/VOC or are circulating >1% in at least one HHS region during at least one two week period; remaining lineages are aggregated as "Other".

\*\* These data include Nowcast estimates, which are modeled projections that may differ from weighted estimates generated at later dates

# Sublineages of P.1 and B.1.351 are aggregated with the parent lineage and included in parent lineage's proportion. Q.1-Q.8 are aggregated with B.1.1.7. AY.3-AY.25 are aggregated with B.1.617.2.

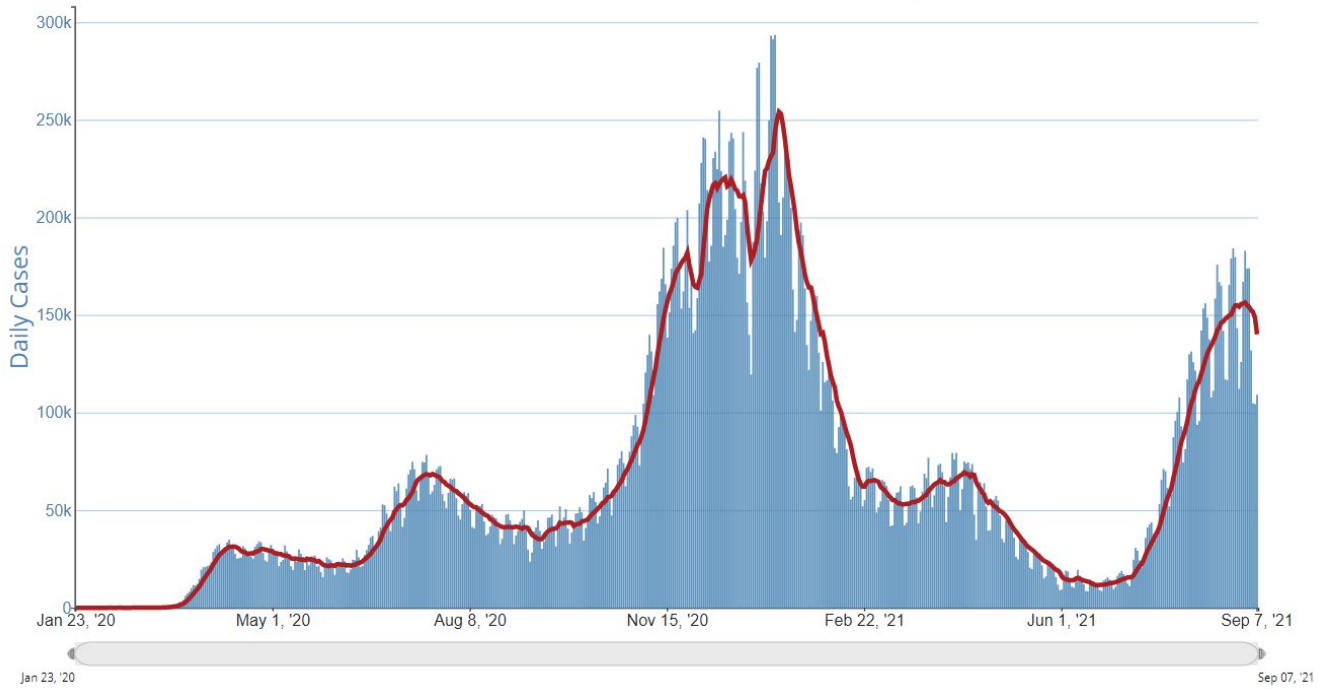
# Central Iowa COVID19 Update



# Central Iowa COVID19 Update



Daily Trends in Number of COVID-19 Cases in The United States Reported to CDC



	CASES DAILY AVG.	PER 100,000	14-DAY CHANGE	HOSPITALIZED DAILY AVG.	PER 100,000	14-DAY CHANGE	DEATHS DAILY AVG.	PER 100,000	FULLY VACCINATED
United States	152,393	46	+1%	101,232	31	+4%	1,499.3	0.45	53%
Tennessee ›	7,525	110	+24%	3,265	48	+15%	33.4	0.49	42%
South Carolina ›	5,414	105	+28%	2,461	48	+22%	53.4	1.04	44%
Kentucky ›	4,056	91	+10%	2,459	55	+24%	19.6	0.44	49%
West Virginia ›	1,517	85	+77%	760	42	+47%	9.6	0.53	40%
Wyoming ›	480	83	+24%	205	35	+37%	3.0	0.52	39%
Alaska ›	602	82	+20%	176	24	+34%	0.9	0.12	48%
Alabama ›	3,947	81	+14%	3,038	62	+4%	19.6	0.40	39%
Mississippi ›	2,375	80	-32%	1,559	52	-13%	39.4	1.32	40%
Guam	134	79	+76%	—	—	—	0.6	0.34	62%
Florida ›	16,363	76	-23%	14,247	66	-17%	344.6	1.60	54%