



# Central Iowa COVID19 Update

---

Monday, June 14, 2021



Aperio

Statistical Consulting

Dr. Meg Schaeffer





## Quick Stats<sup>1</sup>

	Polk County	Iowa
Percent of population with 1 dose*	7%	5%
Percent of population with 2 doses*	46%	43%
7d Lab Test Positivity	1.8%	2.2%
14d Lab Test Positivity	1.9%	1.9%
Total cases per 100,000 the last 7d	13	20
Total cases per 100,000 the last 14d	36	40
Average daily cases the last 7d	18	89
Average 7-day new cases per 100,000	4	3

\*Percent of entire population vaccinated to represent progress to herd immunity.

All data are sourced from <https://coronavirus.iowa.gov/pages/case-counts> with previous days refreshed daily. When recent data are unavailable, data from <https://github.com/nytimes/covid-19-data> may be used. Population of Polk County used is 490,161.

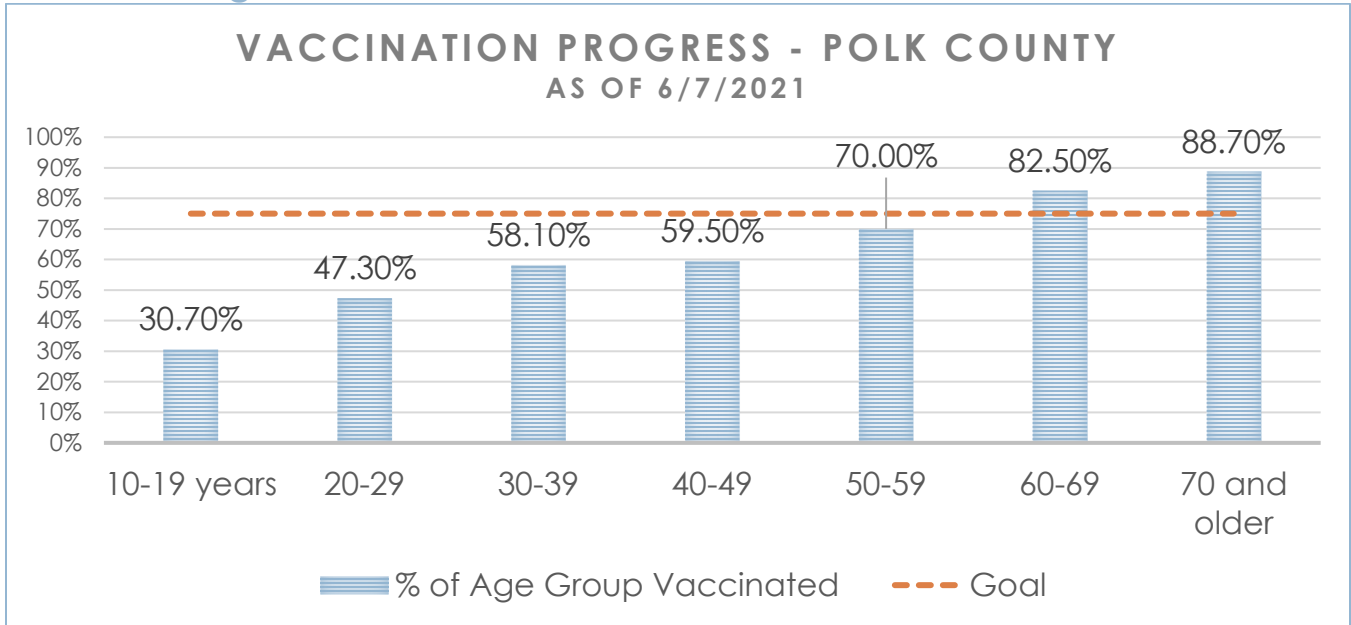
Population of Iowa used is 3.155 million. Averages and percent positivity are subject to change with retrospectively refreshed data.

## Critical Points, Media, and Research

- COVID-19 cases have stabilized statewide and in Polk County. There is still significant potential for another wave of infections this summer and beyond for two reasons – 1) vaccination rates are 54% (single and completely immunized) which is not high enough to prevent another surge; and, 2) the proportion of variant P1 and Delta (B.1.617) are increasing. Both are more transmissible and cause more serious illness. Other countries, by best comparison the UK, are experiencing increases as a result of variants.
- Iowa is administering a little more than 2k doses per day on average. At this rate, herd immunity (between 70-80% immune) will not be reached until the end of the year, however, the expansion of age groups to school age children will likely reduce that timeline.
- [Assessment of SARS-CoV-2 Reinfection 1 Year After Primary Infection in a Population in Lombardy, Italy | Infectious Diseases | JAMA Internal Medicine](#)
- [Risk of reinfection after seroconversion to SARS-CoV-2: A population-based propensity-score matched cohort study | Clinical Infectious Diseases - Reinfection ranges between 1-4%](#)
- [COVID-19 Case Investigation and Contact Tracing in the US, 2020 | Infectious Diseases](#)
- [Symptomatic Acute Myocarditis in Seven Adolescents Following Pfizer-BioNTech COVID-19 Vaccination | American Academy of Pediatrics \(aappublications.org\)](#)
- [The indirect effect of mRNA-based Covid-19 vaccination on unvaccinated household members](#)
- [Heterologous ChAdOx1 nCoV-19 and BNT162b2 prime-boost vaccination elicits potent neutralizing antibody responses and T cell reactivity](#)
- [The detection dogs test is more sensitive than real-time PCR in screening for SARS-CoV-2 | Communications Biology \(nature.com\)](#)
- [Safety, Immunogenicity, and Efficacy of the BNT162b2 Covid-19 Vaccine in Adolescents | NEJM](#)
- [Novavax Offers U.S. a Fourth Strong Covid-19 Vaccine - The New York Times \(nytimes.com\)](#)  
The company plans to submit data for FDA consideration in the third quarter of this year.
- [Vermont, Most-Vaccinated State in the U.S., Drops All Covid-19 Restrictions - WSJ](#)
- [Anti-Vaccine Activists Spread Fear About COVID Vaccines With Selective Data](#)
- [Eight states see rise in new COVID-19 infections](#)
- [Coronavirus update: Latest Covid-19 vaccine and US reopening news](#) – Cases rising in states with lower-than-average vaccination rates



## Vaccine Progress

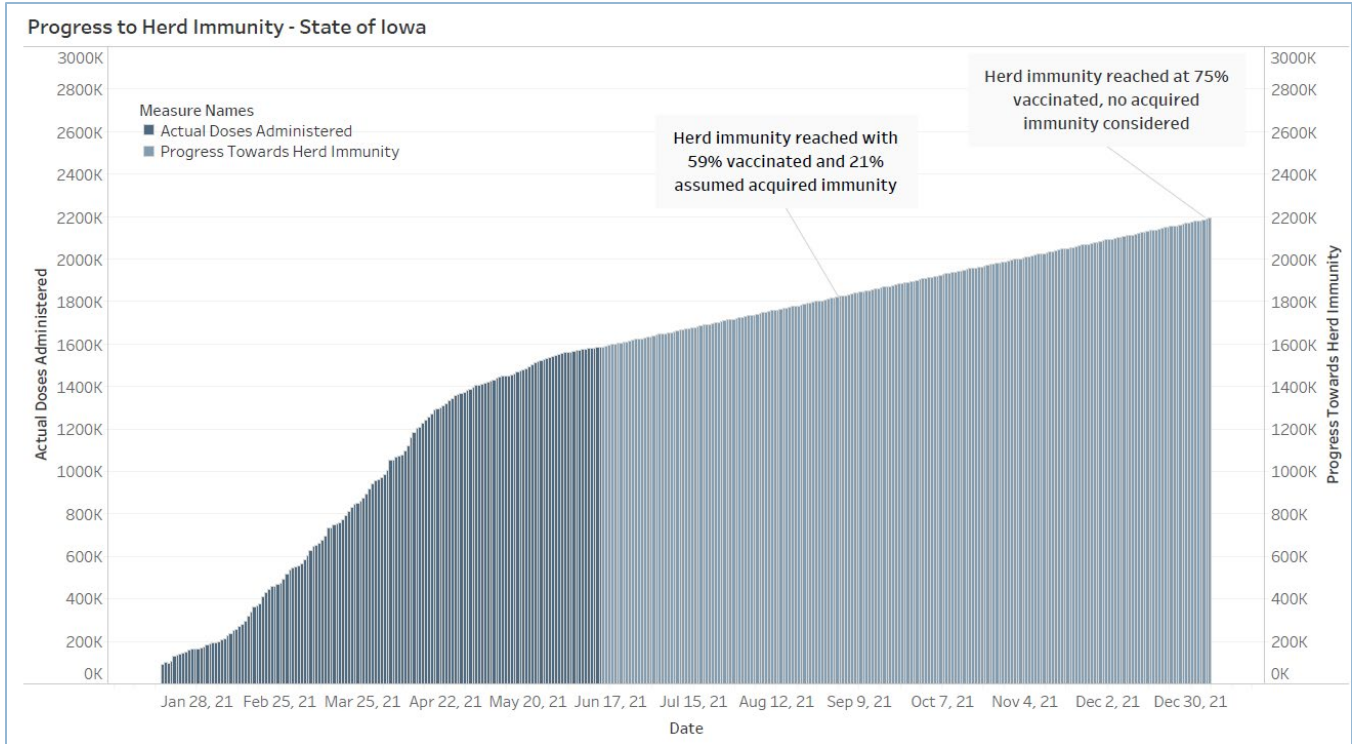


Number of Doses Administered (by date of report)	Initiated Vaccination (1st dose/No Janssen)	Completed Vaccination (2nd dose/Janssen)	Total Polk Co Residents Partially/Fully Vaccinated	Total Population of Polk County (all ages)
462,996	30,821 (7%)	221,808 (45%)	252,629 (52%)	490,121

Age Group	Vaccinated	% Age Group Vaccinated	Estimated Census Population*
10-19 years	19,115	7.60%	28.80%
20-29	32,661	12.90%	46.40%
30-39	40,687	16.10%	57.30%
40-49	38,918	15.40%	58.90%
50-59	41,823	16.60%	69.30%
60-69	40,634	16.10%	81.90%
70 and older	38,791	15.40%	88.30%
<b>Total</b>	<b>252,629</b>		<b>59.40%</b>

\*U.S Census Bureau Polk County (2019 1yr estimate). Census predetermined age data includes non-eligible ages 10 and 11 years old.

# Central Iowa COVID19 Update

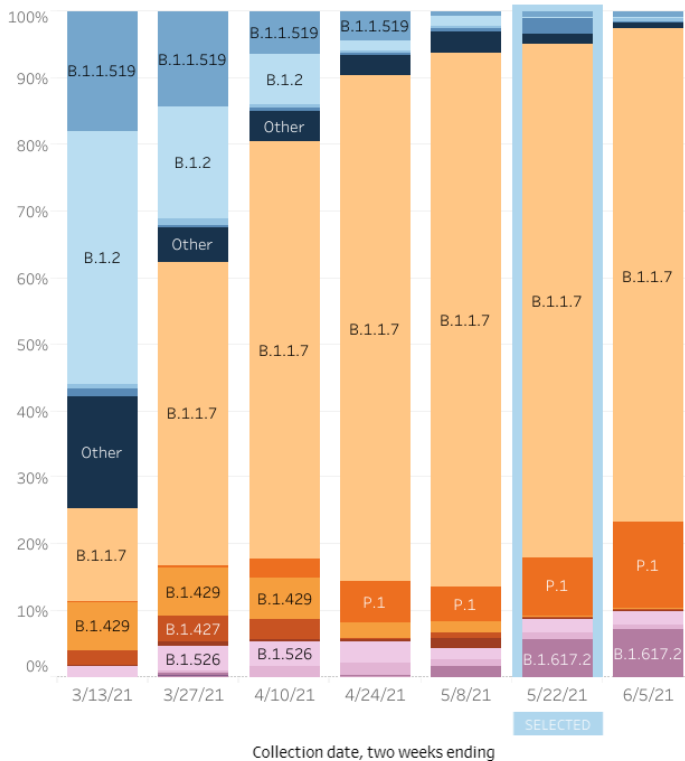


## Variant Prevalence

HHS Region 7: 2/28/2021 – 6/5/2021

HHS Region 7: 5/9/2021 – 5/22/2021

\*\*



Region 7 - Iowa, Kansas, Missouri, and Nebraska

	Lineage	Type	%Total	95%CI	
<b>Most common lineages</b>	B.1.1.7	VOC	77.3%	62.8-87.2%	Orange
	P.1	VOC	8.6%	3.3-20.5%	Red
	B.1.617.2	VOI	5.7%	1.1-24.2%	Purple
	B.1	†	2.6%	0.5-11.1%	Blue
	B.1.526	† VOI	2.1%	0.3-13.4%	Pink
	B.1.526.1	† VOI	1.0%	0.1-12.3%	Light Blue
<b>Additional VOI/VOC lineages</b>	B.1.1.519	†	0.9%	0.2-3.4%	Dark Blue
	B.1.2	†	0.0%	NA	Light Blue
	B.1.526.2	†	0.0%	NA	Light Blue
	B.1.427	† VOC	0.3%	0.0-2.6%	Red
	B.1.429	† VOC	0.3%	0.0-2.6%	Red
	B.1.351	† VOC	0.0%	NA	Brown
	B.1.525	† VOI	0.0%	NA	Pink
	B.1.617	† VOI	0.0%	NA	Purple
	B.1.617.1	† VOI	0.0%	NA	Purple
	B.1.617.3	† VOI	0.0%	NA	Purple
<b>Other*</b>	Other	†	1.5%	0.1-19.7%	Dark Blue

\* Other represents >200 additional lineages, which are each circulating at <1% of viruses

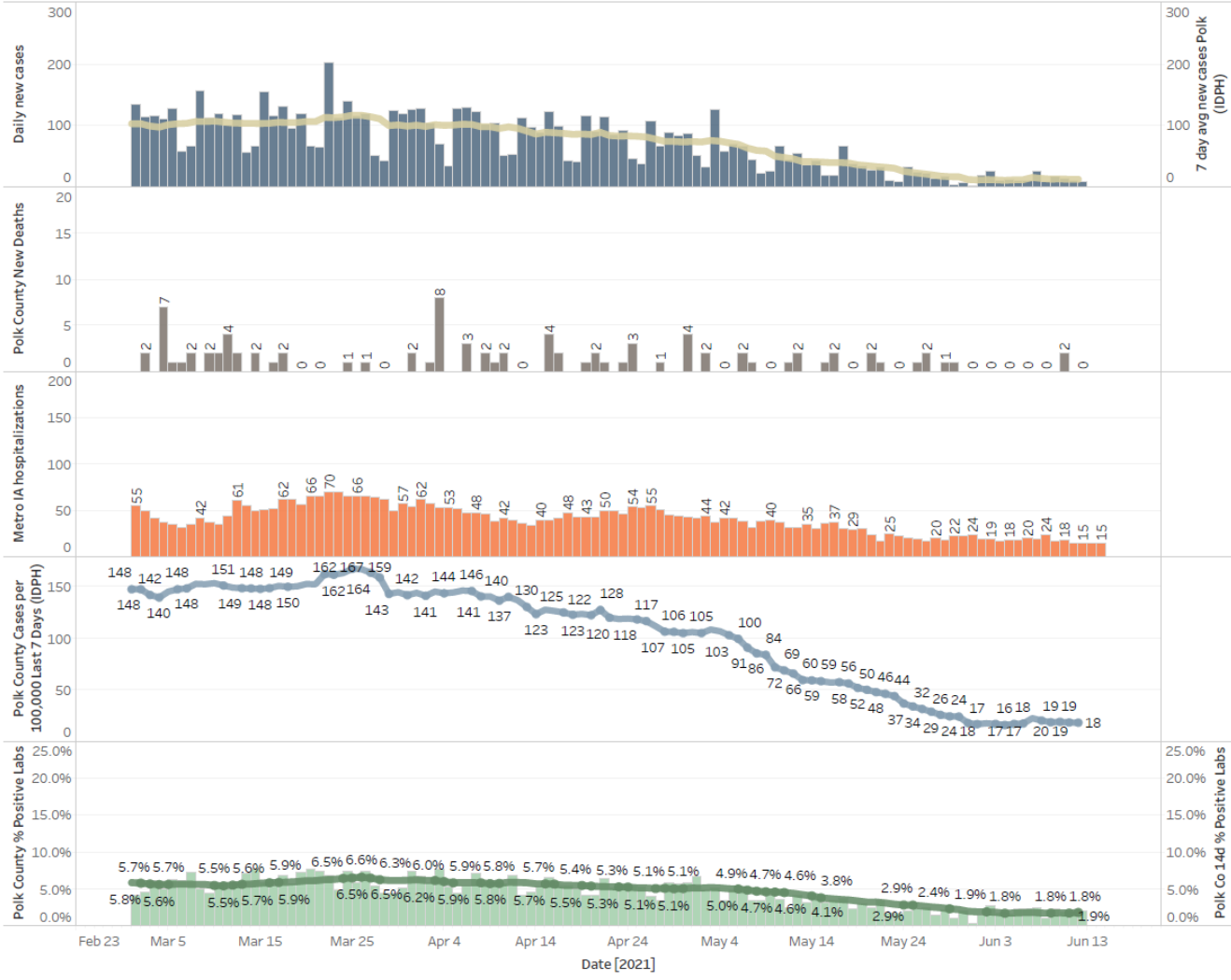
\*\* These data include Nowcast estimates, which are modeled projections that may differ from weighted estimates generated at later dates

† Fewer than 10 observations of this variant during the selected time/loc..

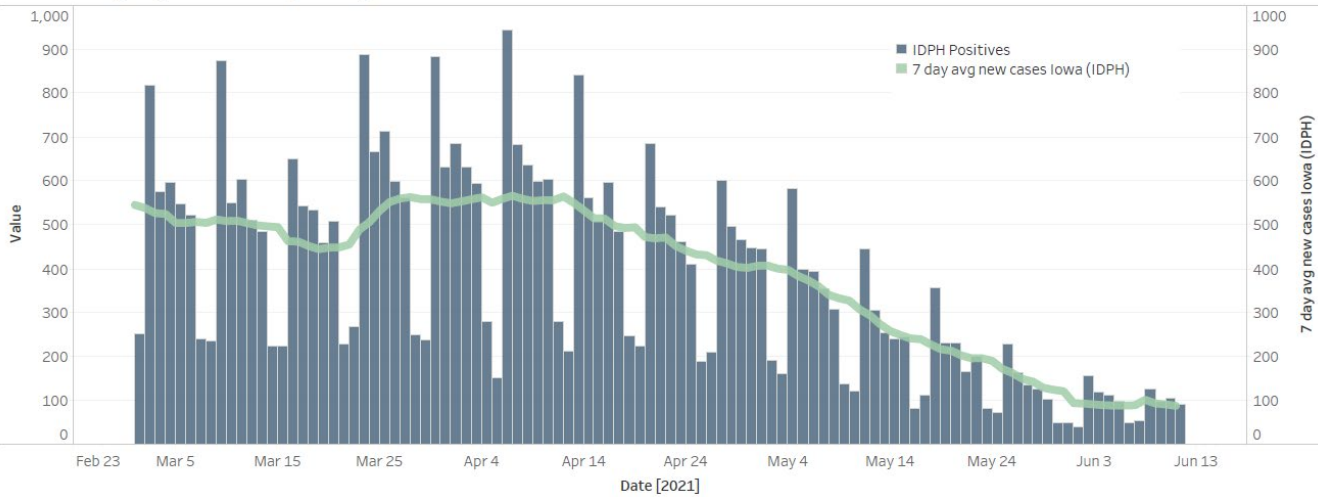
# Central Iowa COVID19 Update



Polk County Activity View - Since Jan 1 2021 through Predictive



Iowa Cases by Day and 7d Moving Average



# Central Iowa COVID19 Update

