



Weekly Stakeholder Briefing

2019 Coronavirus (COVID-19)

June 9, 2020





Welcome and Ground Rules

DeAnne Sesker

Polk County Emergency Management Agency

COVID-19 Planning Section chief





Opening Remarks

Helen Eddy

Director, Polk County Health Department

COVID-19 Incident Commander



Operational Period Objectives



Operational Period: June 9 – June 16, 2020

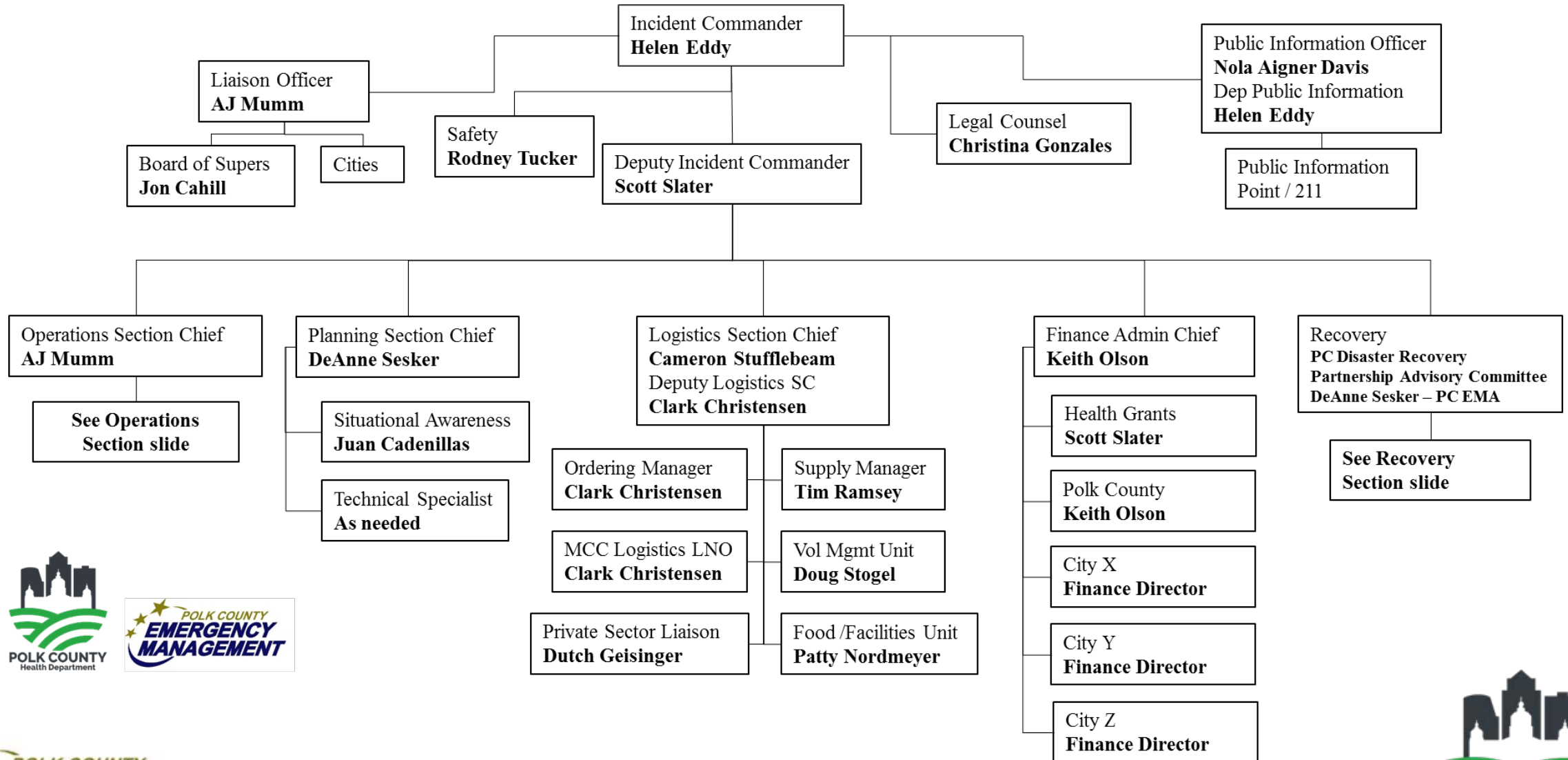
1. Protect the public through risk-based mitigation measures and accepted public health practices
2. Protect healthcare workers and responders
3. Disseminate validated information to the public using a Joint Information System (JIS) and Virtual Joint Information Center (V-JIC)
4. Gather, validate and disseminate information to healthcare workers and responders
5. Coordinate and support the needs of the healthcare community operations via the Medical Coordination Center
6. Consider legal implications of decisions and actions
7. ~~Support a plan to repatriate those traveling abroad~~ (objective met)
8. Determine and address the mental health impacts and needs of the community and responders

Operational Period Objectives



9. Engage volunteers in a coordinated manner
10. Actively manage the donation of needed supplies
11. Provide logistical support through a risk-based, equitable and transparent resource management process
12. Apply sound fiscal management processes to the incident
13. Establish continuity for essential and emergency services personnel
14. Provide services to support those experiencing homelessness diagnosed with COVID-19
15. Manage fatalities in a compassionate manner
16. Plan and execute a recovery plan for the community

CORONAVIRUS COVID-19 ORGANIZATIONAL CHART (05/04/20)

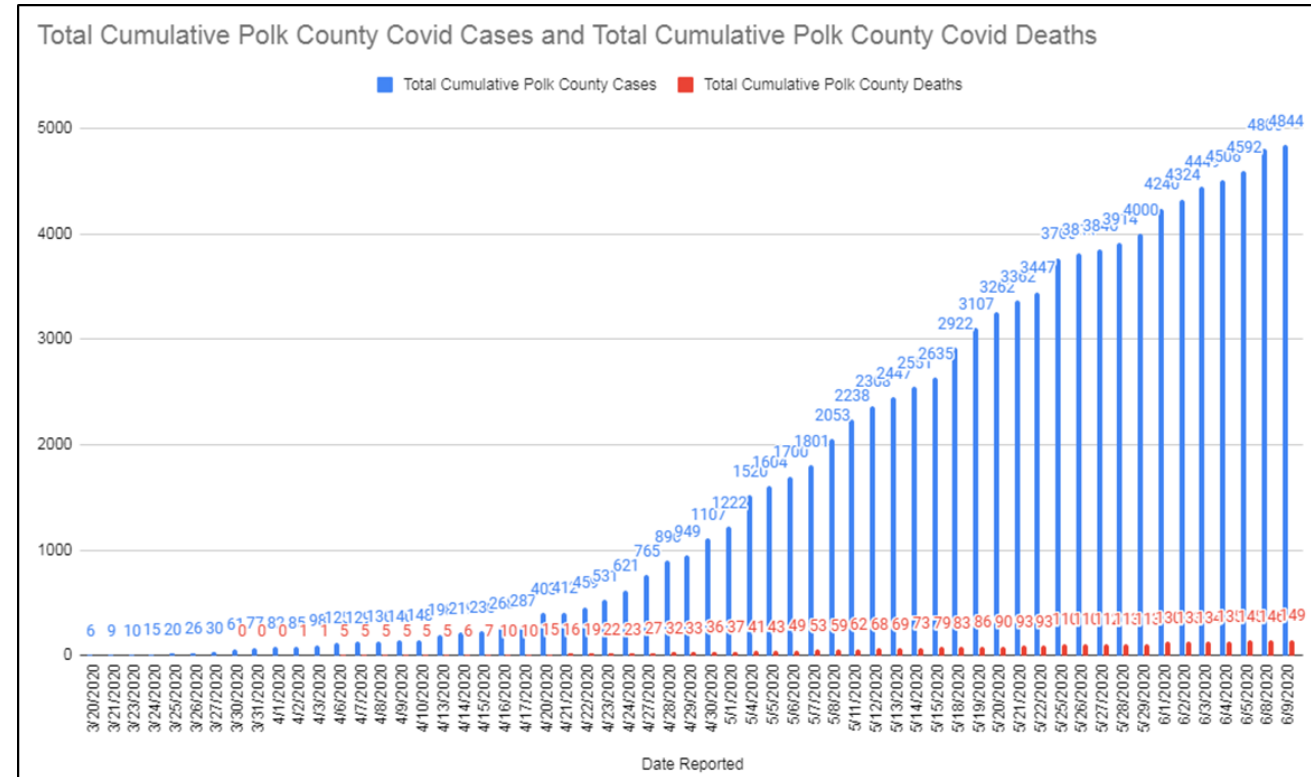


Polk County Total Cases and Deaths



COVID-19 Cases in Polk County	
Confirmed	4,844
Deaths	149

Confirmed Cases are based on IDPH data
Number of deaths are tracked by PCHD



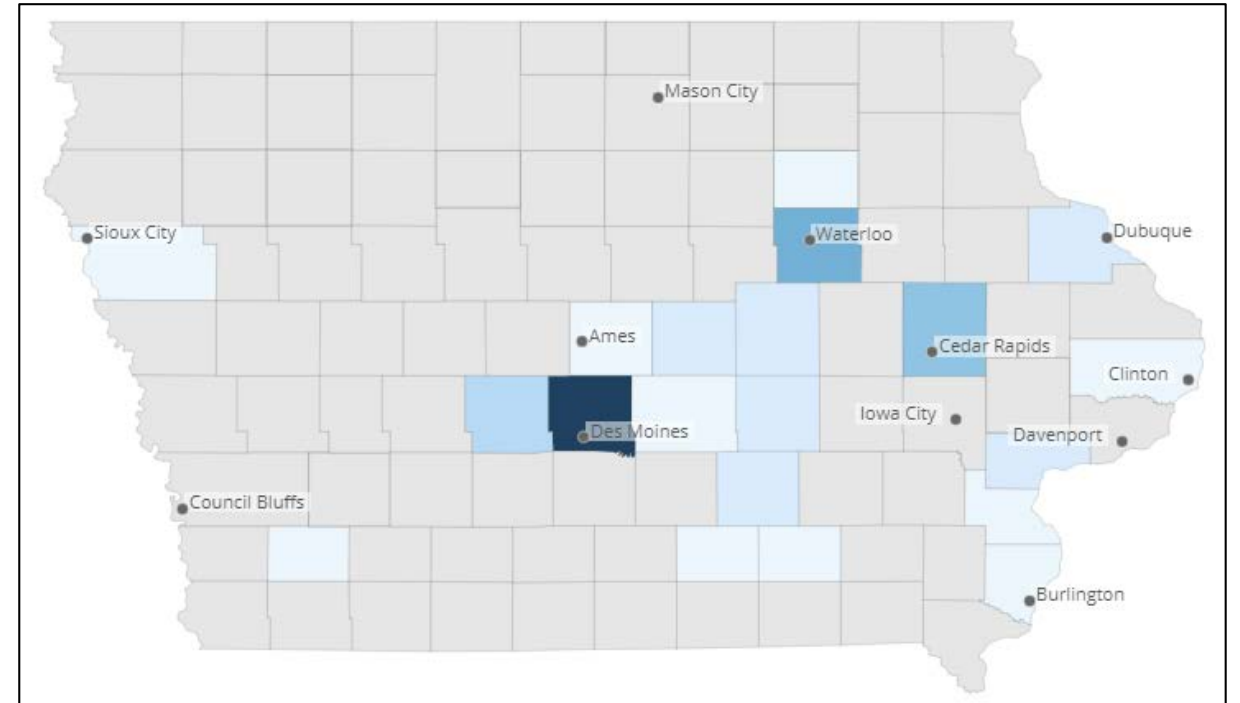
Congregate Living Cases and Outbreaks



Polk County Facilities Impacted

Total Facilities Impacted	84
Facilities Currently Monitored	60
• Facilities with cases; no outbreak	31
• Facilities with a confirmed outbreak*	29

*outbreak = 3 or more confirmed cases





Operations Section

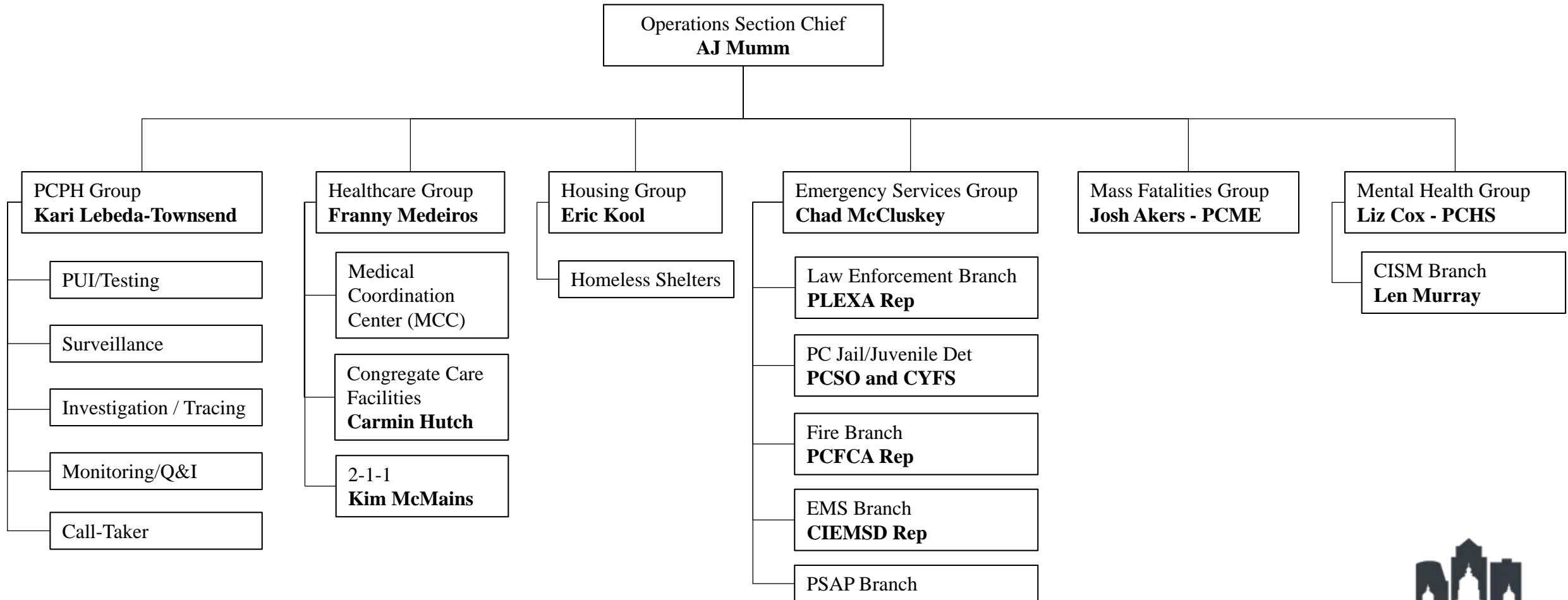
AJ Mumm

Polk County Emergency Management

COVID-19 Operations Section Chief



Operations Section (05/04/20)



Isolation Guidance for Persons with Symptoms



Have symptoms of COVID-19:

■ Not Tested:

- 1) At least 10 days have passed since symptoms onset
- 2) Symptoms have improved/resolved. Feeling well again.
- 3) No fever for at least 72 hours (3 full days without fever reducing medication)

■ Test Results are PCR-positive:

- 1) At least 10 days have passed since symptoms onset
- 2) Symptoms have improved/resolved. Feeling well again.
- 3) No fever for at least 72 hours (3 full days without fever reducing medication)

■ Test Results are PCR-negative & NOT a Close Contact to COVID-19 positive case:

- 1) Resume daily activities 24 hours after fever AND symptoms resolve.

Isolation Guidance for Asymptomatic (No Symptoms)



Asymptomatic (No Symptoms) of COVID-19:

- Test Results are PCR-positive:

- 1) Self-isolate for at least 10 days since date of test
- 2) Remain symptom free

***If symptoms develop during the 10 days of self-isolation, follow 10/R/3 rule*

Isolation Guidance based on Serology Testing



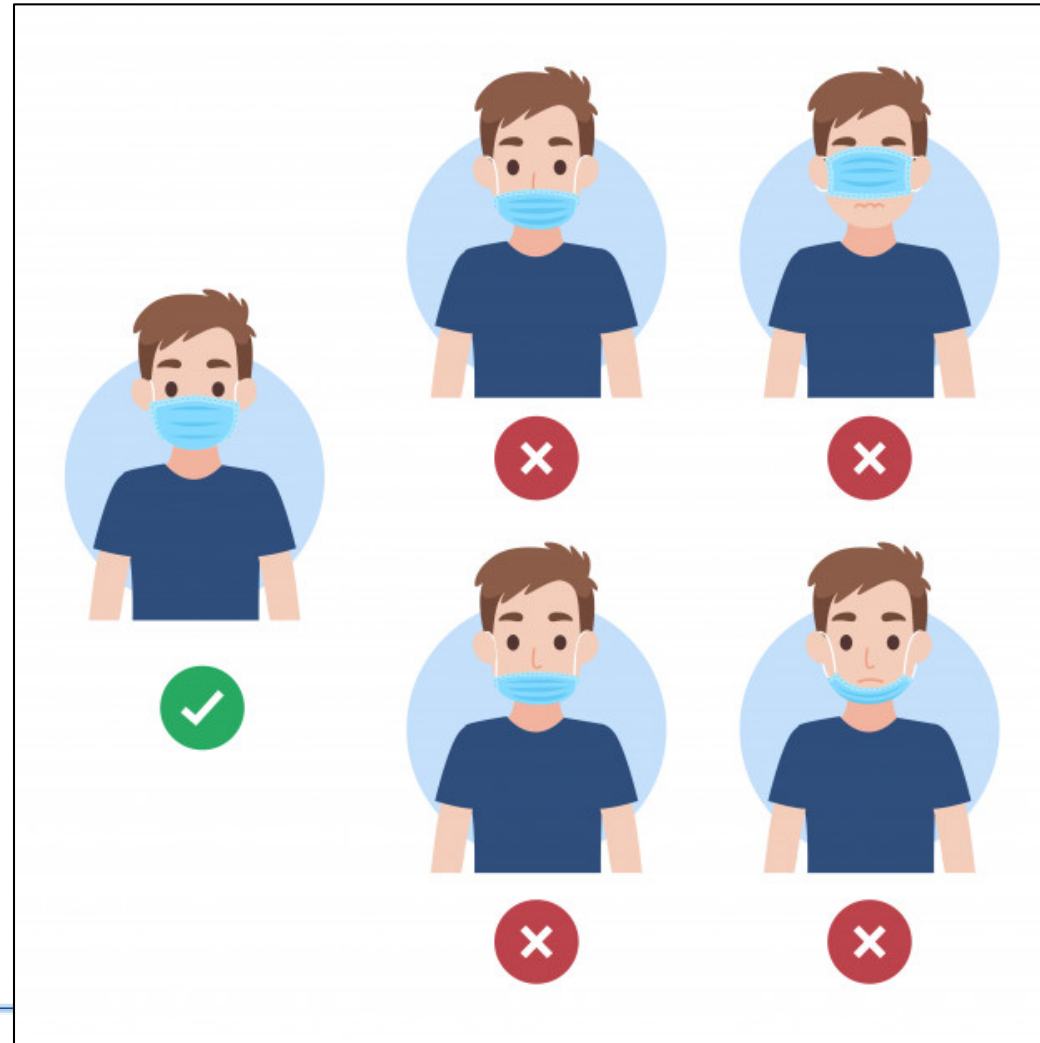
No exclusions or self-isolation if serology positive UNLESS:

- 1) Sick/Symptomatic***
- 2) Test COVID-19 PCR-positive***

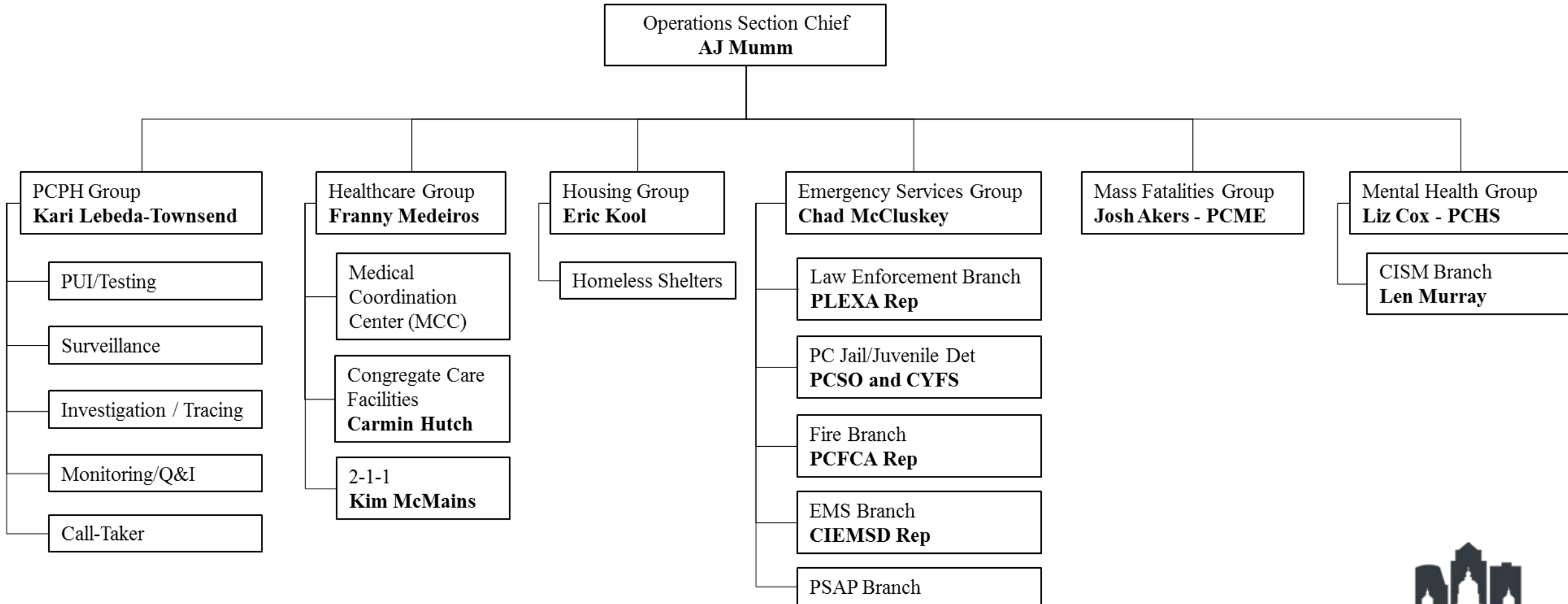
Questions:
Communicable Disease Team
515-286-3890



Right vs Wrong Mask Placement



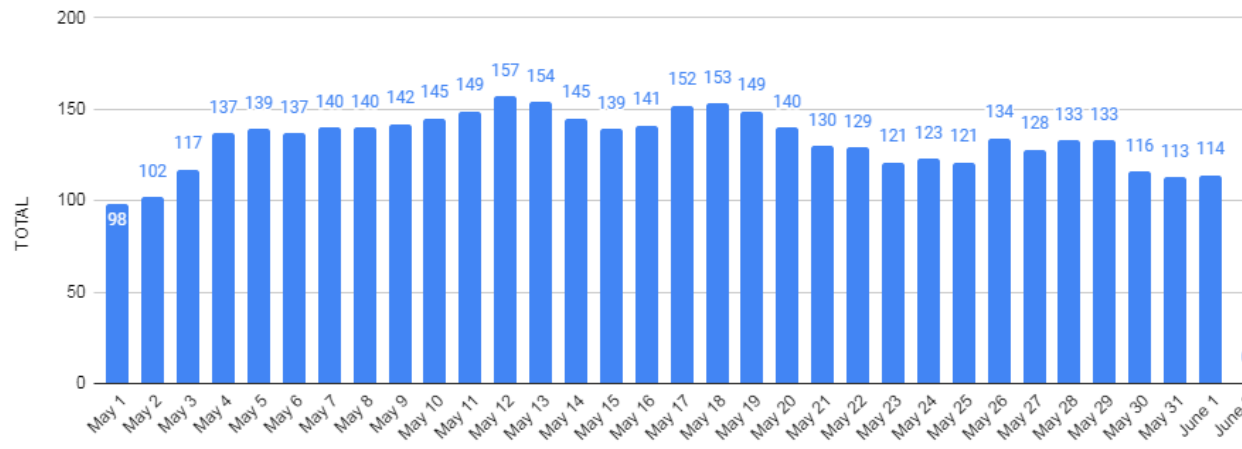
Operations Section (05/04/20)



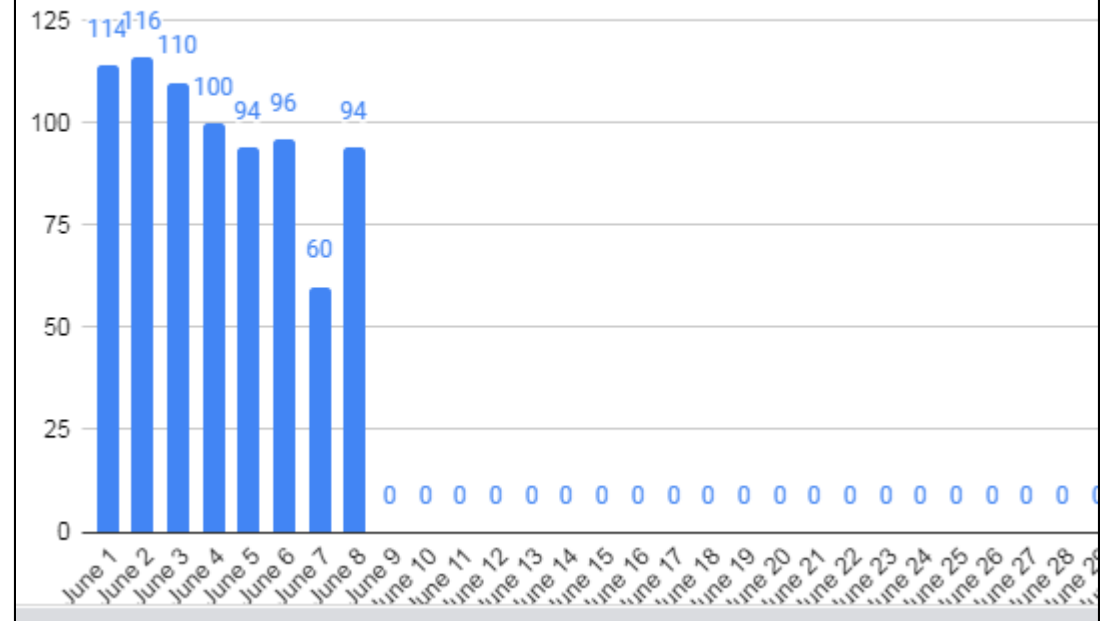
Metro COVID Hospitalizations



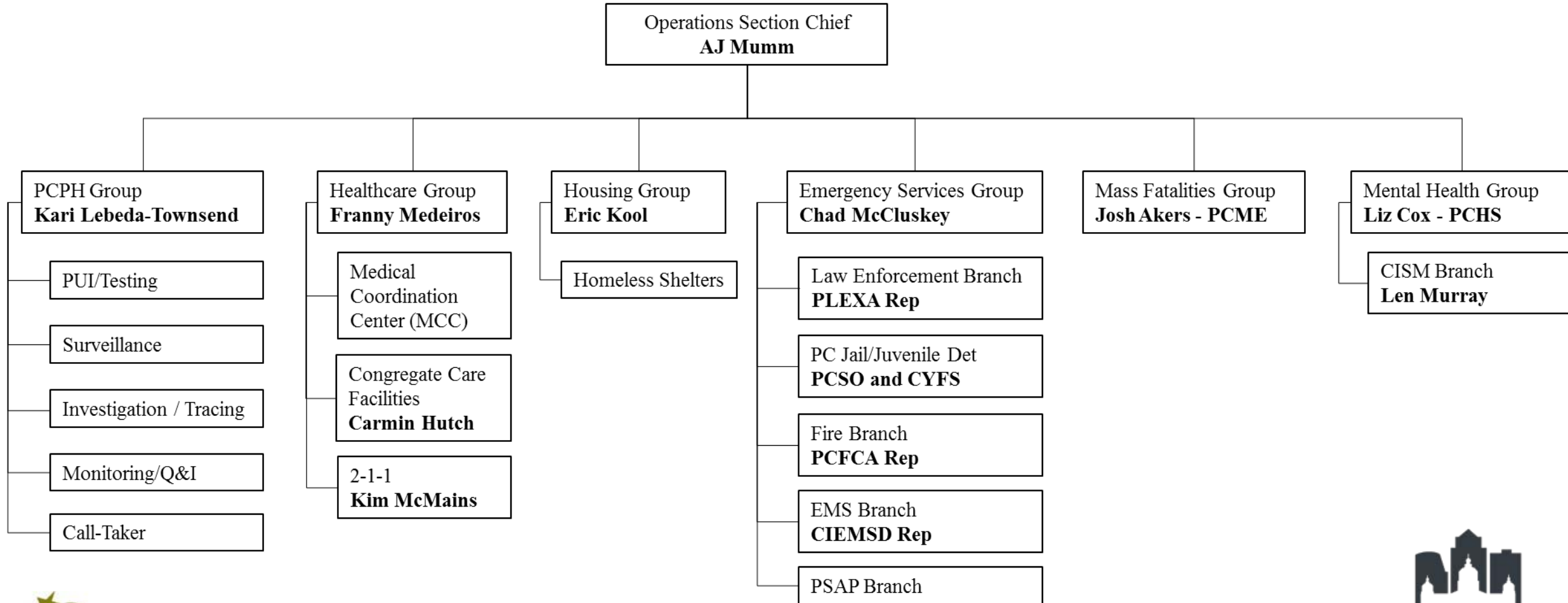
Metro COVID Hospitalizations by Date



June Total Metro Area COVID Hospitalizations



Operations Section (05/04/20)

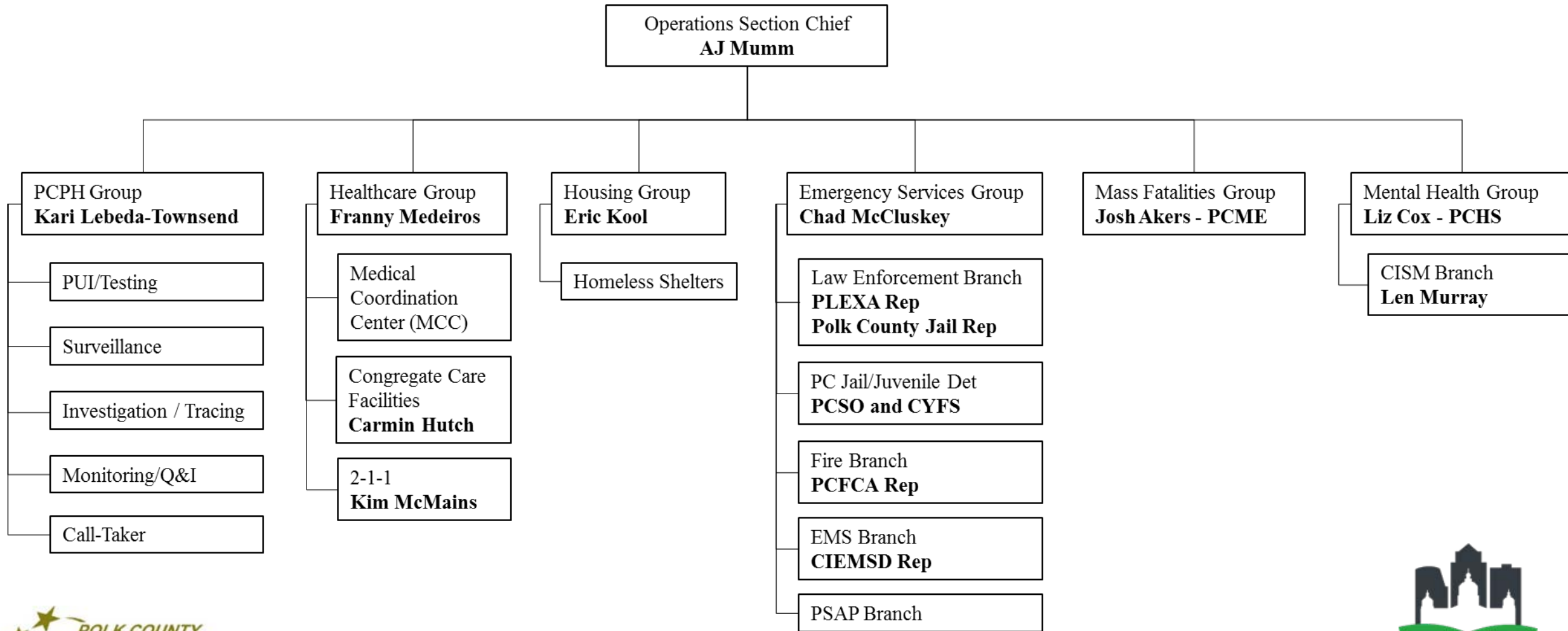




CENTRAL IOWA EMS DIRECTORS

www.ciemsd.org/COVID-19/

Operations Section (05/04/20)





Logistics Section

Cameron Stufflebeam

Polk County Emergency Management

COVID-19 Logistics Section Chief



Resource Management



- State requesting rules:
 - Requests for under 7 days of select items
 - Requests should be to sustain for next 7-10 days based on burn rate
- For the Week of June 1 – June 7, 2020:
 - Items requested through the EOC: 446,649 (+34,878)
 - Items supplied through the EOC: 302,781 (+35,922)
 - Donations received: 279,995 items (+779)
 - Items received from the state: 58,553 (+1,000)

PPE Items Requested and Fulfilled



Item	Requested	Total Provided	State Provided	Private Sector Donations
N95 masks	9,626	7,850	2,228	9,860
Other masks	95,370	81,429	13,500	79,079
Exam gloves	118,510	98,889	10,000	118,672
Gowns	74,536	38,517	39,722	4,098
Face shields	17,101	15,992	2,352	23,528

Organizations Supported



Organization Type	Number of Orgs Supported
Congregate Care Facilities	60
1st/Emergency Response	33
Other Medical Providers	19
Shelter Services	10
Non-profits	11
Surrounding EMAs*	8
Hospitals	4
Polk County Government	5
Community Lifeline	3
State Government	1
Total Organizations Supported	154
*Dallas, Madison, Marion, Warren, Jasper, Boone, Story and ISU	

Priority of Facilities



Requests will be filled based on Priority
(Orders will be filled based on availability of resources and priority of requesting agency)

Priority of Facilities	
1	Hospitals, Contracted entities that provide transportation and security for shelter with confirmed cases of COVID-19, impacted congregate living facilities*
2	Emergency Medical Services, Law Enforcement, Fire Departments, Community Lifelines
3	Long Term Care Facilities, Medical Facilities not identified above
4	Others

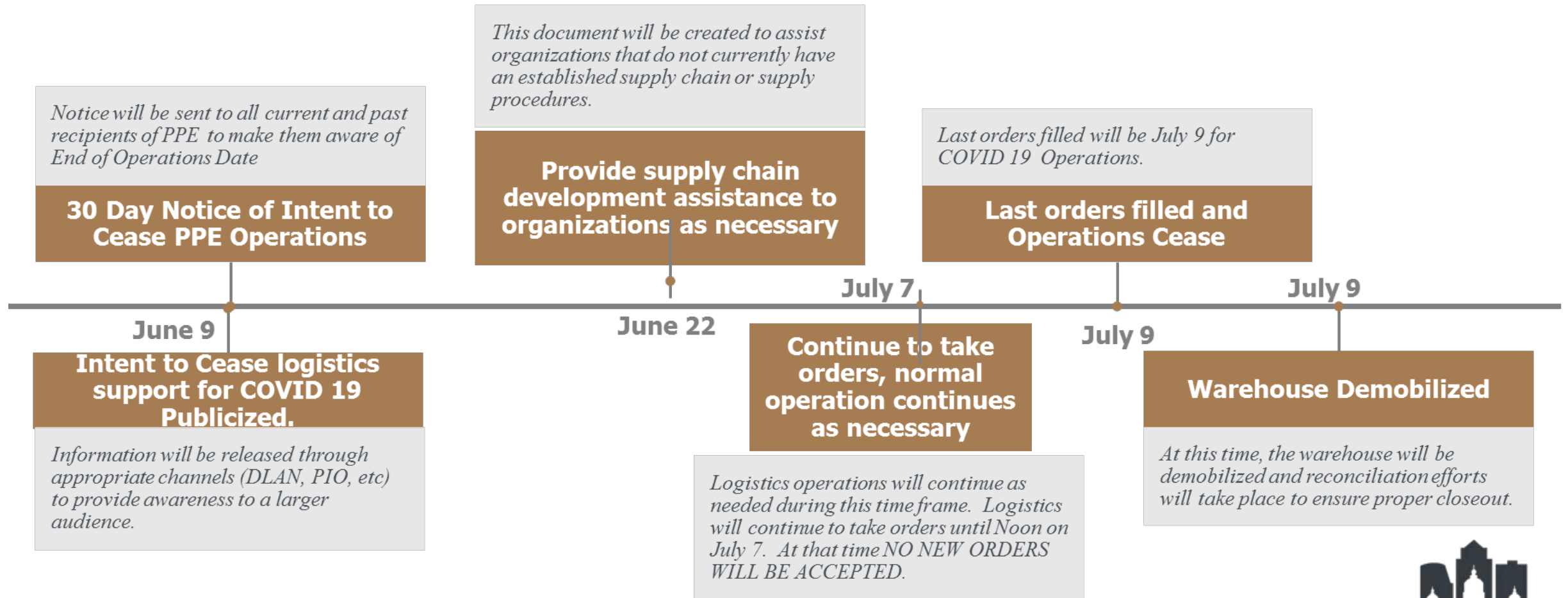
*LTC Facilities with at least 3 confirmed positive COVID-19 cases

Warehouse Demobilization – 9 July 2020



- Last day to request PPE will be 7 July 2020
- Last day to receive PPE will be 9 July 2020
- LTCFs, private businesses and others with medical needs to determine alternate supply chains
 - Development of supply chain video:
<https://www.youtube.com/watch?v=Q9RhsEdUWvE>
- Not all supply chains will be able to provide product at the same time
- Consider alternating vendors / supply chains to obtain products
 - Timeframes to receive supplies need to be understood and monitored to maintain the end user supplies

Logistics Operations – Demobilization Timeline



Important Things To Remember



- It is important to remember that EMERGENCY situations take priority and may call for flexibility in the process. This may include expedition of request for emerging “hot spots”. Please notify the Emergency Management Director and Resource Unit Leader of these Situations.



Logistics Section

Dutch Geisinger

Safeguard Iowa Partnership



Planning Section

DeAnne Sesker

Polk County Emergency Management

COVID-19 Planning Section Chief





Public Information

Nola Aigner Davis

Polk County Public Health

COVID-19 Public Information Officer



Heat and COVID



You can catch COVID-19, no matter how sunny or hot the weather is.

Countries with hot weather have reported cases of COVID-19.

To protect yourself, make sure you clean your hands frequently and thoroughly and avoid touching your eyes, mouth and nose.



#Coronavirus

#COVID19

FACT:
Exposing yourself to the sun or to temperatures higher than 25C degrees **DOES NOT** prevent nor cure COVID-19



27 April 2020



Finance and Administration

Scott Slater - Polk County Public Health

COVID-19 Finance Admin Section Chief and CDC Unit Leader

Keith Olson, Polk County Auditor's Office

FEMA Public Assistance Unit Leader





Recovery

DeAnne Sesker, Polk County Emergency Management
Recovery Section Chief

Current Focus Areas



- COVID-19 testing
- Surge capacity
- Continuity Planning
- Ethics/Crisis Standards of Care
- Food pantry (monitoring)
- Congregate facilities

Ongoing Initiatives



- Resource management
- Rumor control
- Law Enforcement
- Critical infrastructure
- Mass fatality planning
- Alternative housing

Emerging Priorities



- Blood donation/supply
- Second Wave planning
- Demobilization
- Recovery

Weekly Meetings at a Glance



	Monday	Tuesday		Wednesday	Thursday	Friday
800		Daily Briefing				
830						
900				County EMA / HSEMD (C)		
930						
1000						
1030		Weekly Stakeholders			MCC (Z)	
1100		Briefing (Z)	Gov Press		Gov Press	
1130			Conference		Conference	
1200	Law Enforcement (C)	Shelters (C)		HCC / IDPH (Z)		Law Enforcement (C)
1230						
1300		Critical Infrastructure Partners (C)			Dallas County Briefing (Z)	
1330						
1400		MCC/Chief Medical Officers (Z)				
1430						
1500						
1530				Mass Fatalities (Z)		
1600		EMS (Z)				
1630						
1700						

BIG WINS!



What	Who
2-1-1 for the public, clinical and responder audiences	Healthcare and Mental Health Groups
Town Halls/Media coverage	PIO
Isolation Shelter	Housing Group
Social media and PCHD website	PIO
Partnering with United Way for volunteer management	Volunteer Management Branch
Establishment of the Medical Coordination Center in the EOC	Healthcare Group
Development of the resource ordering application and process	Healthcare Group Logistics Section
Identified alternative housing for first responders	Emergency Services Branch
Non-traditional hospital surge plan draft	Healthcare Group
Developed and deployed the PCHD Testing Strike Team	Polk County Public Health Group

What	Who
Clarification on exposure criteria for responders	Healthcare Group - CIEMSD
Ongoing capture of successes/best practices	Planning Section Chief
Mitigation strategies implemented	County Jail and Juvenile Detention
Emerging Infectious Disease Surveillance tool	CIEMSD
Strong and resilient Communicable Disease Team nurses	Polk County Public Health Group
Airway bypass added to EMResource	Healthcare Group - CIEMSD
MOAs returned from all MCC partners	Healthcare Group - MCC
Logistics Ordering Process established and shared	Logistics Section
WHO-TV "13 Days of Caring" campaign implemented	Board of Supervisors



Questions and Answers
