



Central Iowa COVID19 Update

Monday, March 15, 2021



Aperio

Statistical Consulting

Dr. Meg Schaeffer





Quick Stats¹

	Polk County	Iowa
Percent of population with 1 dose	6.5%	10.1%
Percent of population with 2 doses	14.7%	12.2%
7d Lab Test Positivity	5.9%	4.3%
14d Lab Test Positivity	5.6%	4.1%
Total cases per 100,000 the last 7d	146	109
Total cases per 100,000 the last 14d	291	220
Average daily cases the last 7d	102	491
Average 7-day new cases per 100,000	21	16

¹All data are sourced from <https://coronavirus.iowa.gov/pages/case-counts> with previous days refreshed daily. When recent data are unavailable, data from <https://github.com/nytimes/covid-19-data> may be used. Population of Polk County used is 490,161. Population of Iowa used is 3.155 million. Averages and percent positivity are subject to change with retrospectively refreshed data.

Critical Points, Media, and Research

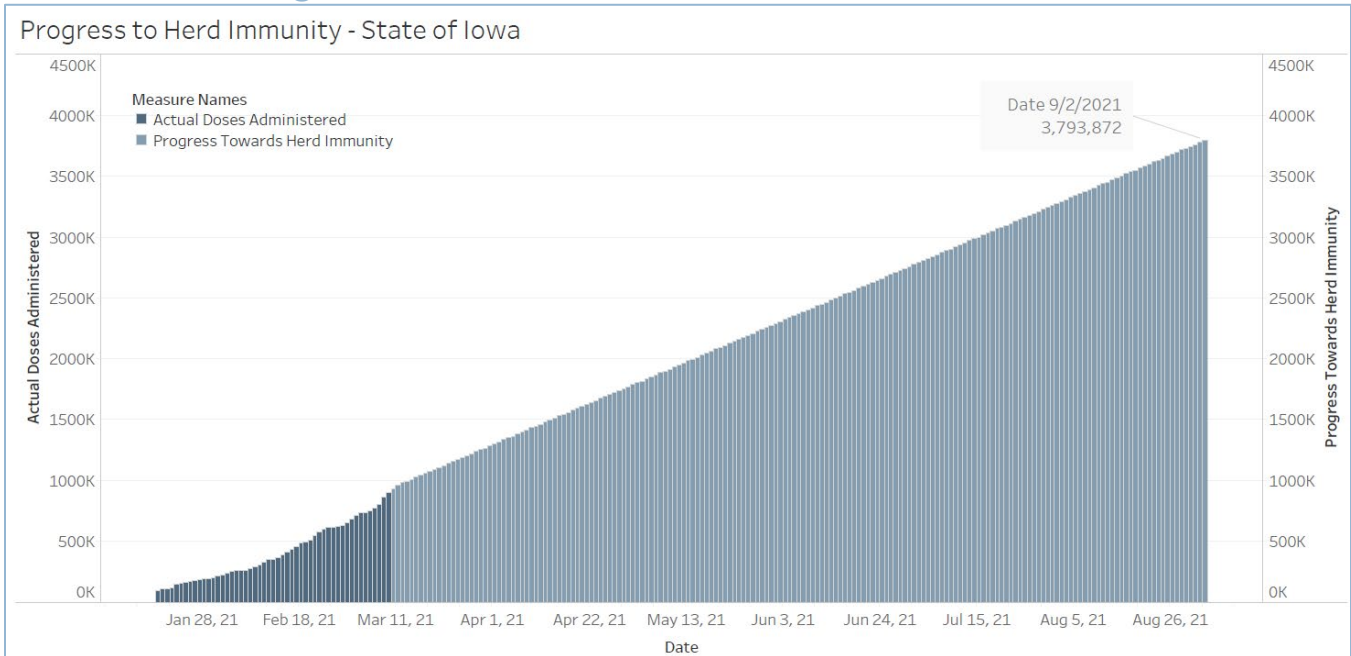
- Iowa cases are slightly rising, though an increase or surge is not confirmed. Hospitalizations are back up to 50 on average in the metro. Polk County cases are still relatively stable. Both Polk and Iowa case rates remain high.
- Vaccination progress is strong with an average of almost 30,000 doses per day.
- [Iowa tops 1M COVID-19 shots as state struggles with appointments | KTVO](#)
- [Polk County health officials battling misinformation as vaccines become more widely available | weareiowa.com](#)
- [Effectiveness of three versus six feet of physical distancing for controlling spread of COVID-19 among primary and secondary students and staff: A retrospective, state-wide cohort study | Clinical Infectious Diseases | Oxford Academic \(oup.com\)](#)
- [U.S. Air Travel Is Rising Fast, Despite C.D.C. Warnings - The New York Times \(nytimes.com\)](#)
- [The effects of wearing facemasks on oxygenation and ventilation at rest and during physical activity \(plos.org\)](#)
- [SARS-CoV-2 Seroconversion and Viral Clearance in Patients Hospitalized With COVID-19: Viral Load Predicts Antibody Response | Open Forum Infectious Diseases | Oxford Academic \(oup.com\)](#)
- [Persistent SARS-CoV-2 RNA Shedding without Evidence of Infectiousness: A Cohort Study of Individuals with COVID-19 | The Journal of Infectious Diseases | Oxford Academic \(oup.com\)](#)
- [Paris may face new Covid-19 lockdown as intensive care fills up \(france24.com\)](#)
- [Germany declares a Covid 'third wave' has begun; Italy set for Easter lockdown \(cnbc.com\)](#)
- [Global mutation tracker - COVID-19 virus Mutation Tracker \(kaust.edu.sa\)](#)
- [Rapid SARS-CoV-2 variants spread detected in France using specific RT-PCR testing | medRxiv](#)

Vaccine

- [Pfizer Inc. - Real-World Evidence Confirms High Effectiveness of Pfizer-BioNTech COVID-19 Vaccine and Profound Public Health Impact of Vaccination One Year After Pandemic Declared](#)
- [Covid-19 Vaccine: Answers to Key Questions](#)
- [Iowa Vaccination Progress](#)
- [Vaccination progress in the US](#)



Vaccination Progress

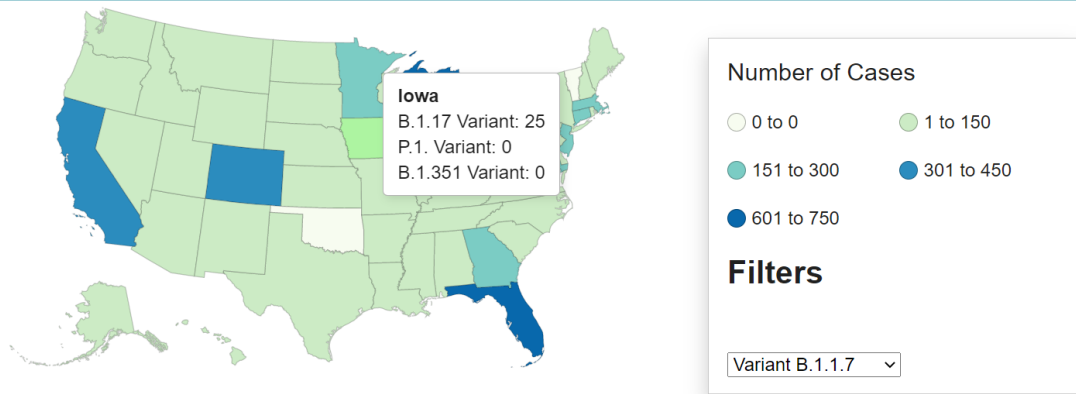


Assumptions: 10% of the population or higher will have acquired immunity; 60% immune through vaccination for a total of 70% of the population immune, two vaccines available, two doses required, similar distribution and administration pace

Variant Prevalence

Variant	Reported Cases in US	Number of Jurisdictions Reporting
B.1.1.7	4690	50
B.1.351	143	25
P.1	25	10

Emerging Variant Cases in the United States*†



Territories AS GU MH FM MP PW PR VI

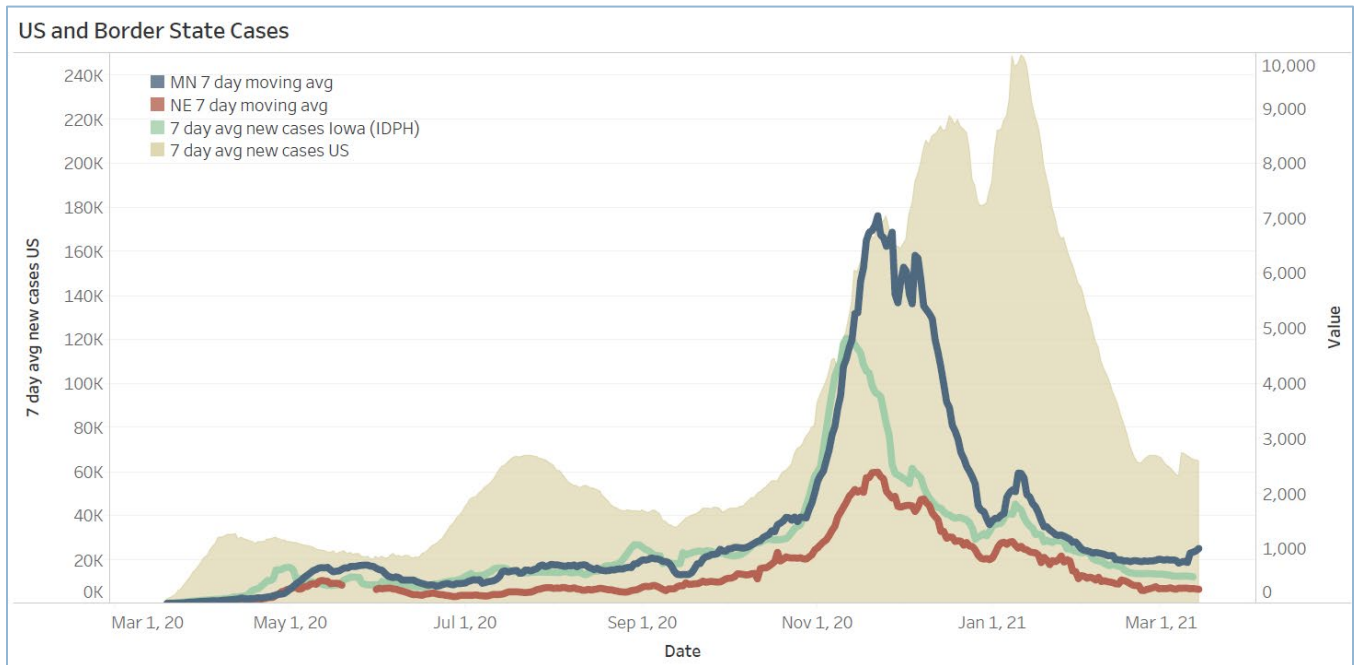




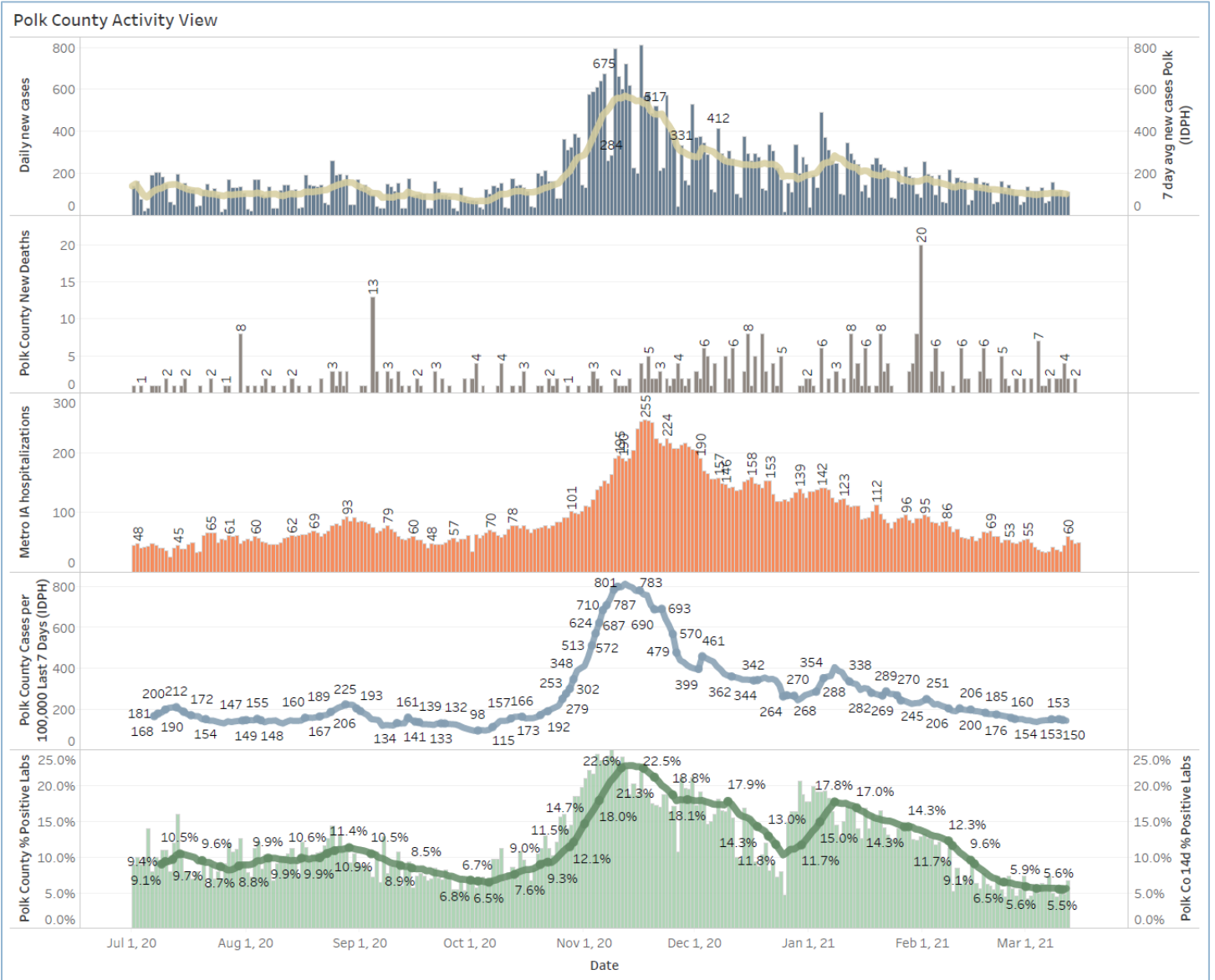
School Statistics – Polk County (Updated per week on Mondays)

Rate of Student/Staff Cases Per 1,000																		
Week Ending	1-Nov	8-Nov	15-Nov	22-Nov	29-Nov	13-Dec	20-Dec	27-Dec	10-Jan	17-Jan	24-Jan	31-Jan	7-Feb	14-Feb	22-Feb	1-Mar	7-Mar	15-Mar
DMPS	0.2	4.0	0.5	0.5	0.2	0.7	0.7	0.4	4.0	1.9	2.6	0.2	2.5	0.8	1.3	0.6	0.7	0.5
Ankeny	3.8	3.8	4.3	4.3	4.5	3.3	1.9	1.8	5.9	3.8	3.1	2.8	2.3	1.6	2.0	1.0	0.7	1.0
Waukee	5.8	10.3	9.4	6.5	4.6	3.5	1.7	1.7	4.5	5.0	2.4	3.3	3.0	3.0	3.0	2.3	1.7	1.7
WDM	2.8	5.7	11.0	4.7	1.1	2.7	1.9	0.6	4.0	4.2	1.6	2.2	1.6	2.4	1.1	1.3	1.1	1.6
Johnston	6.3	8.3	10.4	7.1	5.4	2.3	1.7	0.3	4.6	3.4	2.1	3.3	2.3	1.6	3.3	3.7	1.6	1.1
SE Polk	4.7	5.0	8.3	7.9	7.7	3.0	4.6	2.7	3.4	5.0	3.9	2.9	3.4	3.0	2.1	2.4	2.1	2.3
Urbandale	1.8	2.0	10.8	8.5	5.8	3.5	3.5	2.0	6.0	3.0	2.5	2.8	3.3	4.0	2.3	2.5	2.8	2.8
DCG		6.0	10.4	9.5	13.3	4.7	0.9	2.8	2.2	2.2	2.5	1.3	1.3	1.9	2.5	1.9	1.3	2.5
Bondurant		8.3	7.9	13.4	13.4	3.7	2.8	7.4	0.0		0.9	12.5	19.0	11.6	11.6	0.9	0.5	2.3
North Polk		4.5	5.6	5.6	4.5	1.1	1.7	2.3	3.9	1.1	7.9	5.6	10.1	1.7	3.9	11.3	1.1	0.6
Ballard		0.0	0.0	8.2	0.6	1.2	1.2	0.0	0.0	4.1	1.2	1.2	6.4	6.4	5.8	2.3	1.2	1.2
Saydel		7.5	12.7	3.0	0.0	2.2	3.0	2.2	3.7	3.7	3.7	0.7	1.5	3.0	2.2	3.7	0.7	0.0

Students/Staff in Quarantine																			
Week Ending	1-Nov	8-Nov	15-Nov	22-Nov	29-Nov	13-Dec	20-Dec	27-Dec	10-Jan	17-Jan	24-Jan	31-Jan	7-Feb	14-Feb	22-Feb	1-Mar	7-Mar	15-Mar	
DMPS	N/A	N/A	N/A	N/A	N/A	N/A	N/A	N/A	N/A	N/A	N/A	N/A	N/A	220	198	235	223	193	203
Ankeny	225	225	370	370	273	172	107	87	132	116	125	138	178	106	88	75	45	53	
Waukee	332	500	575	384	160	76	113	136	156	195	95	108	127	128	94	102	65	79	
WDM	146	204	239	70	12	38	19	14	114	55	54	83	69	39	46	22	25	41	
Johnston	586	667	527	318	286	73	78	73	116	147	126	109	100	106	150	137	84	85	
SE Polk	186	211	307	380	401	126	121	129	89	125	129	96	84	86	92	105	93	77	
Urbandale	39	97	180	223	179	49	32	34	43	71	78	50	67	77	59	54	51	51	
DCG		80	159	216	82	69	46	41	33	43	42	44	45	59	79	44	37	37	
Bondurant		148	160	167	138	97	55	62	<6	N/A	28	68	86	69	69	11	18	18	
North Polk		103	101	90	61	55	51	46	30	19	35	57	52	50	39	39	34	31	
Ballard				77	40	34	16		28	12	25	20	18	40	30	9	16	18	
Saydel		109	88	65	46	30	33	24	39	26	27	26	33	19	23	18	18	15	
Total	1514	2344	2706	2360	1678	819	671	646	780	809	764	799	1079	977	1004	839	679	708	



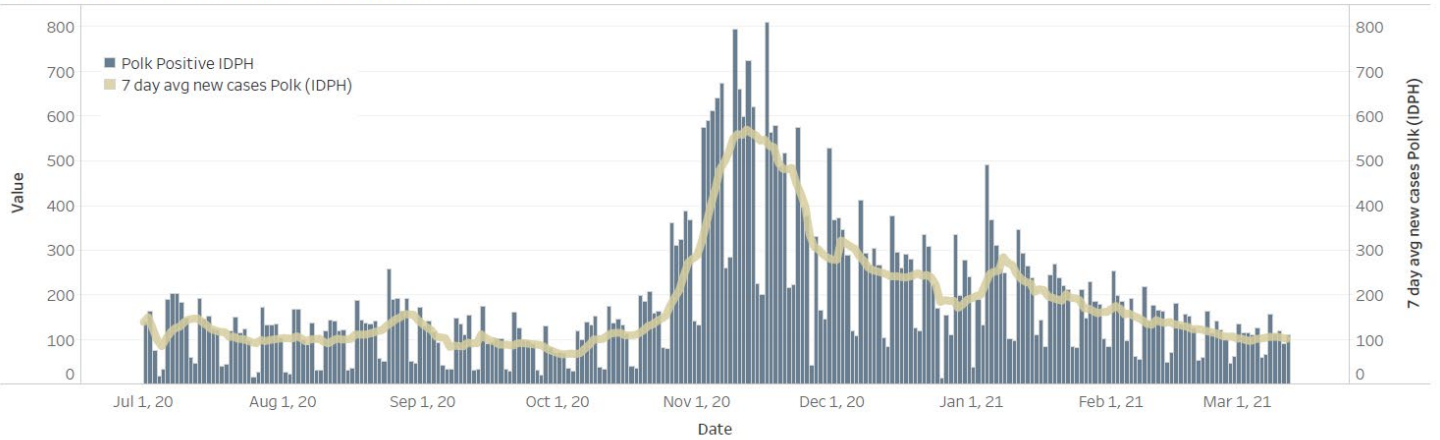
Central Iowa COVID19 Update



Central Iowa COVID19 Update



Polk County Cases by Day and 7d Moving Average



Iowa Cases by Day and 7d Moving Average

