

Central Iowa COVID19 Update

Thursday, May 12, 2022



Aperio

Statistical Consulting

Dr. Meg Schaeffer





Quick Stats

	Polk County	Next Highest Target**	Iowa
Community Metrics			
Percent of population with at least 1 dose*	74.4%		68%
Percent of population with fully vaccinated*	67.8%	85%	62%
Average daily cases the last 7d	130		548
CDC County Level**	Low	Med	NA
Total cases per 100,000 the last 7d**	186	>200	122
Healthcare Metrics			
Percent of staffed inpatient beds occupied by COVID-19 patients (7-day average)**	1.6%	10-14%	1.79%
New COVID-19 admissions per 100,000 population (7-day total)**	3	10-19.9	5
CDC Community Transmission Level (For Healthcare use)	Substantial	High	Substantial
<p>Notes: Community Metrics are defined by CDC and should be used to determine the impact of COVID-19 on communities and take action. Healthcare metrics are also defined by CDC and are used to assist healthcare providers in making planning and mitigation decisions.</p> <p>*Vaccine Information Iowa COVID-19 Information</p> <p>All data are sourced from Novel Coronavirus - COVID-19 Reporting (iowa.gov) with previous days refreshed weekly. The population of Polk County used is 490,161. Population of Iowa used is 3.155 million. Averages and percent positivity are subject to change with retrospectively refreshed data.</p> <p>**CDC COVID Data Tracker</p>			

Critical Points, Media, and Research

Polk County cases are fast reaching Medium levels where additional community mitigation measures may be needed. Hospitalizations are rising as well. The state increase is rising at a slower rate than the county. This increase matches that of several states surrounding Iowa. Polk County case counts could be leveling, though may reflect lags in reporting.

News & Research

- [Effectiveness of a COVID-19 Additional Primary or Booster Vaccine Dose in Preventing SARS-CoV-2 Infection Among Nursing Home Residents During Widespread Circulation of the Omicron Variant — United States, February 14–March 27, 2022](#)
- [Seroprevalence of Infection-Induced SARS-CoV-2 Antibodies — United States, September 2021–February 2022](#)
- [Provisional Mortality Data — United States, 2021](#)
- [Provisional COVID-19 Age-Adjusted Death Rates, by Race and Ethnicity — United States, 2020–2021](#)
- [Effectiveness of a COVID-19 Additional Primary or Booster Vaccine Dose in Preventing SARS-CoV-2 Infection Among Nursing Home Residents During Widespread Circulation of the Omicron Variant — United States, February 14–March 27, 2022](#)
- [Efficacy and Safety of the RBD-Dimer-Based Covid-19 Vaccine ZF2001 in Adults | NEJM](#)
- [Efficacy and Safety of a Recombinant Plant-Based Adjuvanted Covid-19 Vaccine | NEJM](#)
- [Evaluation of mRNA-1273 Covid-19 Vaccine in Children 6 to 11 Years of Age | NEJM](#)
- [Iowa COVID-19 cases, hospitalizations rise for third week in a row \(desmoinesregister.com\)](#)
- [EU to drop mask mandate for flights and airports - The Washington Post](#)



Vaccine Progress

Polk Co Vaccination Rates CDC Covid Data Tracker Data (*)	At Least One Dose	Difference prev week	Fully Vaccinated	Difference prev week
Total	364,580	270	332,487	303
% of Total Population	74%	0.1%	68%	0.0%
Population ≥ 5 Years of Age	364,530	269	332,487	303
% of Population ≥ 5 Years of Age	80%	0.1%	73%	0.0%
Population ≥ 12 Years of Age	346,728	213	316,459	257
% of Population ≥ 12 Years of Age	85%	0.0%	77%	0.0%
Population ≥ 18 Years of Age	318,395	180	290,724	232
% of Population ≥ 18 Years of Age	86%	0.0%	79%	0.1%
Population ≥ 65 Years of Age	68,825	41	64,356	91
% of Population ≥ 65 Years of Age	95%	0.0%	95%	0.0%

(*) CDC COVID Data Tracker Data: CDC data includes vaccine administration data from all sources, including IRIS*, other state immunization registries, and federal entities (Bureau of Prisons, Veterans Health Administration, Department of Defense, and Federal Long-Term Care program). These doses may not have been reported to IRIS.

Link to Zip Code-Level Vaccination

Rates - <https://arcg.is/1nTry4>

Polk Co People Fully Vaccinated with a Booster (*)	Data	Difference prev week
Total	177,394	475
% of Fully Vaccinated Population with a Booster Dose	53%	0.1%
Fully Vaccinated Population ≥ 18 Years of Age with a Booster Dose	177,351	475
% of Fully Vaccinated Population ≥ 18 Years of Age with a Booster Dose	56%	0.1%
Fully Vaccinated Population ≥ 50 Years of Age with a Booster Dose	170,414	424
% of Fully Vaccinated Population ≥ 50 Years of Age with a Booster Dose	59%	0.1%
Fully Vaccinated Population ≥ 65 Years of Age with a Booster Dose	52,188	127
% of Fully Vaccinated Population ≥ 65 Years of Age with a Booster Dose	81%	0.1%

(*)The count of people who received a booster dose includes anyone who is fully vaccinated and has received another dose of COVID-19 vaccine since August 13, 2021. This includes people who received booster doses and people who received additional doses.

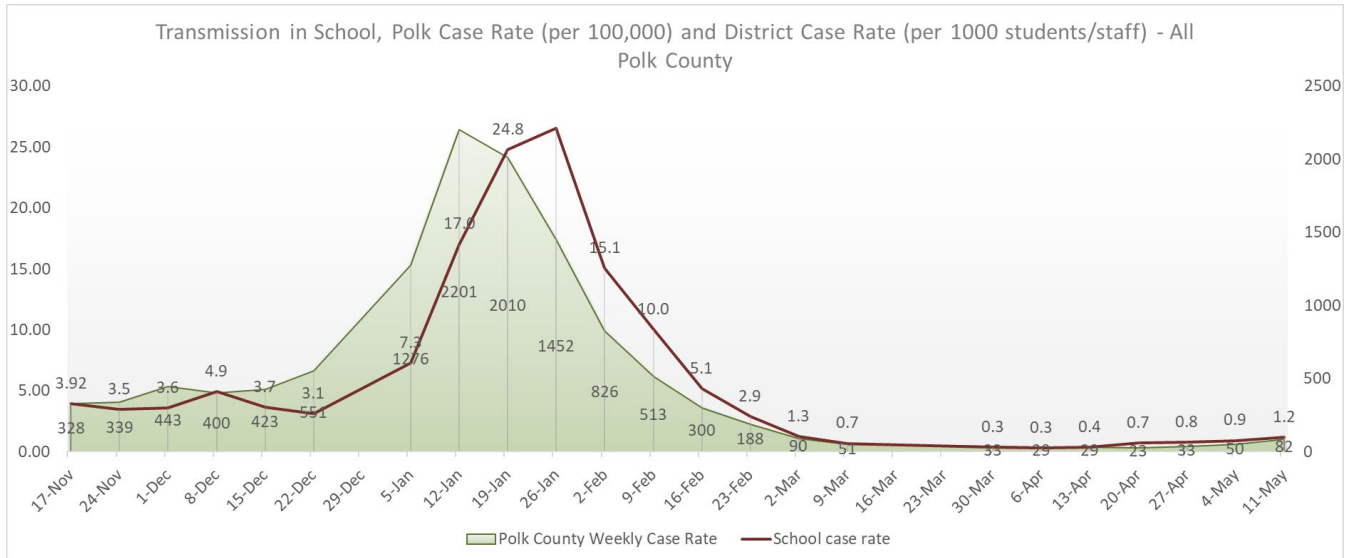
Central Iowa COVID19 Update



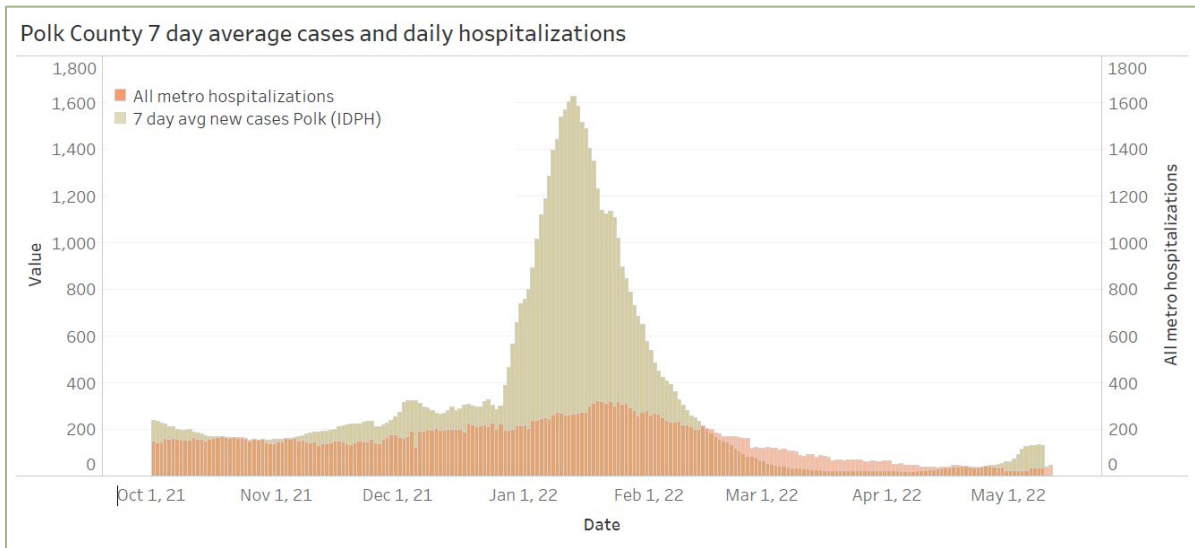
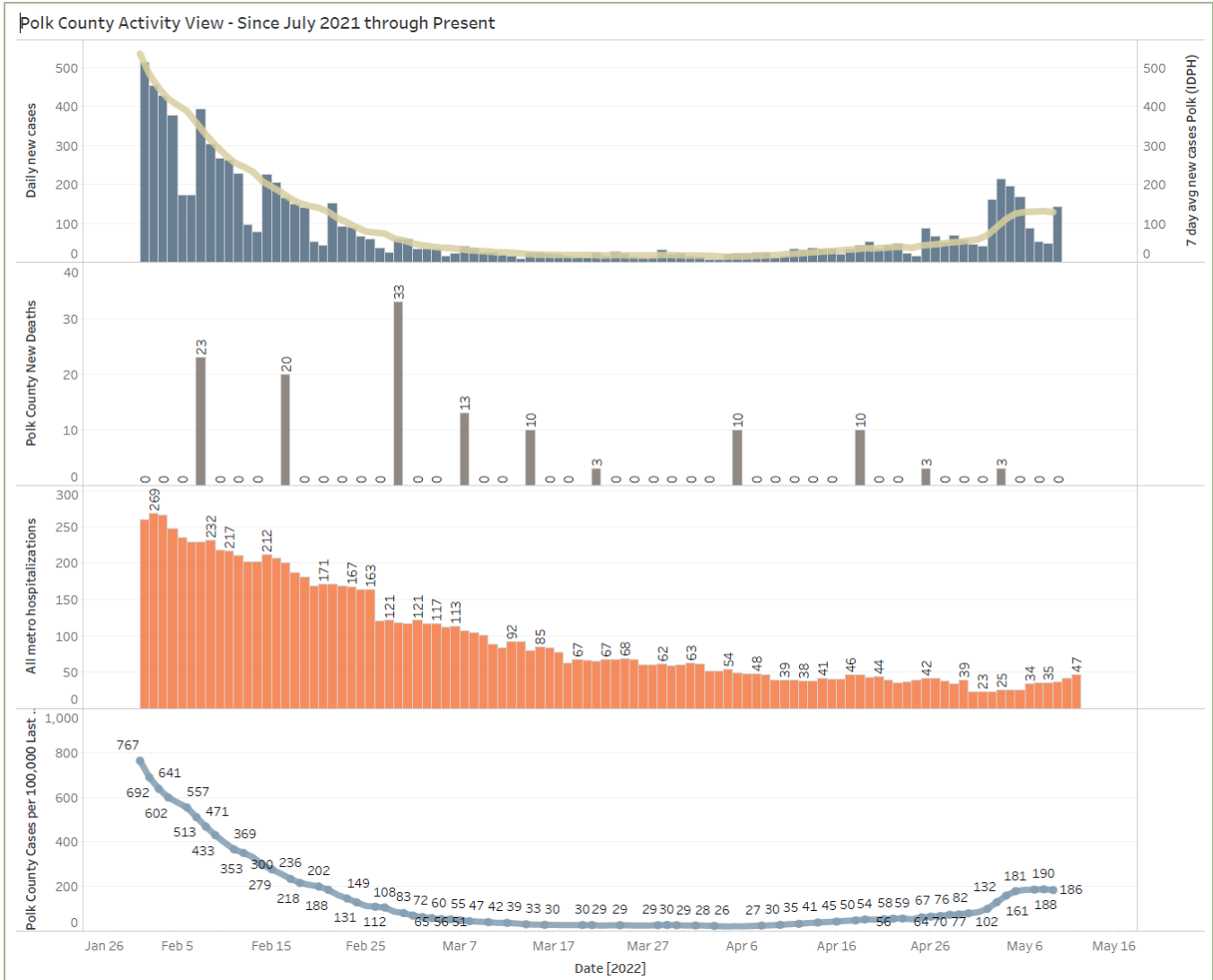
School Data

		New Student/Staff Case Rates per 1000																					
Week Ending	17-Nov	24-Nov	1-Dec	8-Dec	15-Dec	22-Dec	5-Jan	12-Jan	19-Jan	26-Jan	2-Feb	9-Feb	16-Feb	23-Feb	2-Mar	9-Mar	30-Mar	6-Apr	13-Apr	20-Apr	27-Apr	4-May	11-May
DMPs*	2.12	2.24	3.58	5.06	3.79	3.03	7.91	14.79	11.45	19.45	8.45	10.06	2.70	1.61	0.27	0.36	0.30	0.24	0.09	0.45	0.39	0.88	1.88
Ankeny	4.00	3.33	3.25	5.83	5.00	4.67	NA	18.42	32.08	40.58	24.83	18.33	6.42	3.42	1.92	0.50	0.17	0.17	0.17	0.67	0.67	1.17	1.42
Waukee	6.70	8.09	4.43	4.52	3.57	3.04	8.26	15.74	13.22	13.04	6.96	3.22	1.74	0.78	0.09	0.17	0.17	0.17	0.78	1.30	1.30	1.48	0.96
WDM	5.67	5.00	5.00	7.67	5.11	3.78	NA	19.67	31.67	33.44	26.11	11.56	9.11	3.33	3.33	1.22	0.22	0.56	0.22	1.00	2.00	1.44	1.44
Johnston	3.43	0.86	2.00	3.43	2.86	3.43	NA	8.29	24.57	36.29	8.71	10.29	2.14	2.86	1.71	0.86	0.29	0.14	0.29	0.29	0.29	0.29	0.29
SE Polk	2.29	3.14	4.14	5.29	2.86	1.71	1.86	13.29	14.71	11.57	10.29	4.86	2.14	1.00	0.29	0.43	0.00	0.00	0.14	0.14	0.14	0.43	0.71
Urbandale	3.25	4.25	3.00	3.75	1.75	2.75	11.00	29.00	46.00	31.50	20.00	12.00	11.75	7.00	1.25	1.25	1.25	0.75	1.00	1.00	0.75	0.75	1.75
School case rate	3.92	3.5	3.6	4.9	3.7	3.1	7.3	17.0	24.8	26.6	15.1	10.0	5.1	2.9	1.3	0.7	0.3	0.3	0.4	0.7	0.8	0.9	1.2

		New Student/Staff Cases																					
Week Ending	17-Nov	24-Nov	1-Dec	8-Dec	15-Dec	22-Dec	5-Jan	12-Jan	19-Jan	26-Jan	2-Feb	9-Feb	16-Feb	23-Feb	23-Feb	9-Mar	30-Mar	6-Apr	13-Apr	20-Apr	27-Apr	4-May	11-May
DMPs*	70	74	118	167	125	100	261	488	378	642	279	332	89	53	9	12	10	8	3	15	13	29	62
Ankeny	48	40	39	70	60	56	NA	221	385	487	298	220	77	41	23	6	2	2	2	8	8	14	17
Waukee	90	105	63	65	48	36	120	210	186	150	80	37	20	9	1	2	2	2	9	15	15	17	11
WDM	51	45	45	69	46	34	NA	177	285	301	235	104	82	30	30	11	2	5	2	9	18	13	13
Johnston	24	6	14	24	20	24	NA	72	208	254	61	72	15	20	12	6	2	1	2	2	2	2	2
SE Polk	16	22	29	37	20	12	13	93	103	81	72	34	15	7	2	3	0	0	1	1	1	3	5
Urbandale	13	17	12	15	7	11	44	116	184	126	80	48	47	28	5	5	5	3	4	4	3	3	7
Total School Cases	312	309	320	447	326	273	438	1377	1729	2041	1105	847	345	188	82	45	23	21	23	54	60	81	117
Polk Weekly Cases	1607	1663	2173	1959	2075	2698	6250	10785	9850	7116	4045	2515	1468	919	439	250	162	144	141	114	164	246	402
Polk County Weekly Case Rate	3.28	3.39	4.43	4.00	4.23	5.51	7.3	17.0	24.8	26.6	15.1	10.0	5.1	2.9	1.3	0.7	0.3	0.3	0.4	0.7	0.8	0.9	1.2



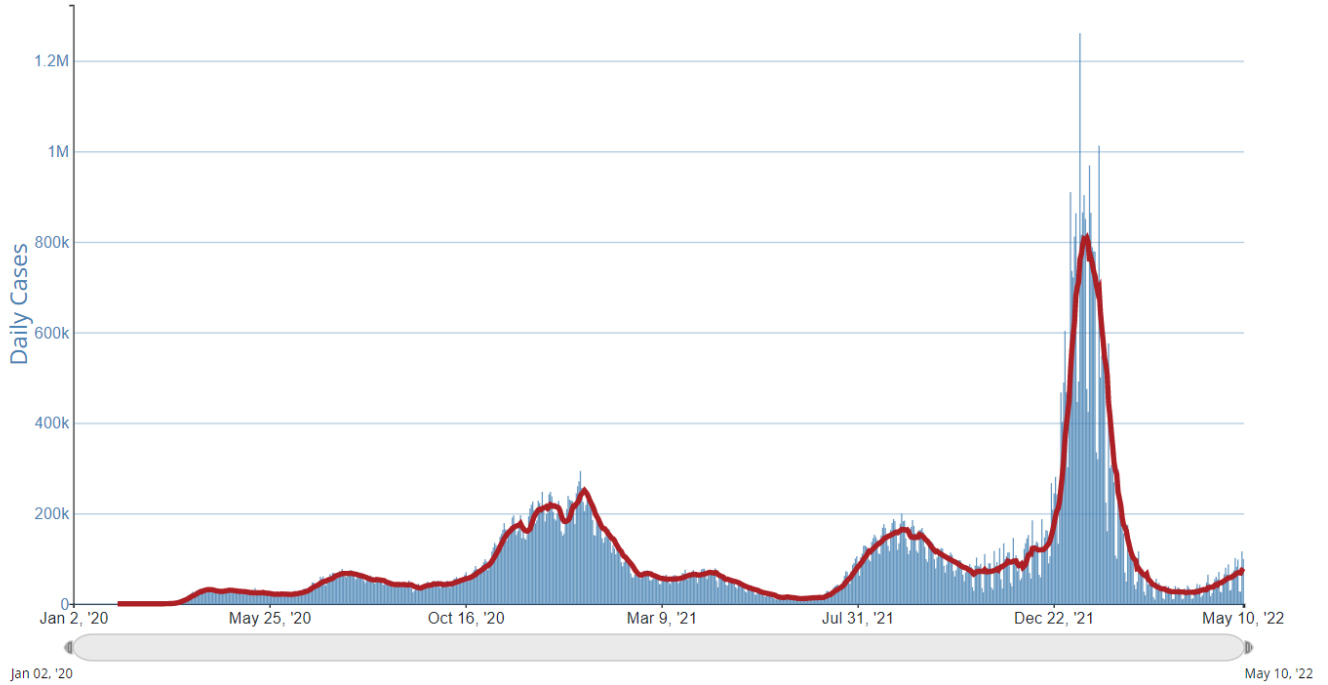
Central Iowa COVID19 Update



Central Iowa COVID19 Update



Daily Trends in Number of COVID-19 Cases in The United States Reported to CDC



	CASES DAILY AVG.	PER 100,000	14-DAY CHANGE	HOSPITALIZED DAILY AVG.	PER 100,000	14-DAY CHANGE	DEATHS DAILY AVG.	PER 100,000	FULLY VACCINATED
United States	77,092	23	+52%	19,270	6	+19%	365.4	0.11	66%
Puerto Rico ›	4,411	130	+38%	281	8	+47%	2.7	0.08	78%
U.S. Virgin Islands ›	137	129	+254%	13	12	+193%	0.2	0.21	54%
Rhode Island ›	712	67	+90%	87	8	+46%	0.9	0.08	83%
Vermont ›	337	54	+19%	65	10	+23%	1.1	0.18	81%
Massachusetts ›	3,700	54	+68%	665	10	+49%	9.3	0.13	79%
Maine ›	691	51	+175%	217	16	+65%	5.1	0.38	80%
New York ›	9,544	49	+47%	2,553	13	+30%	19.7	0.1	77%
Connecticut ›	1,516	43	+73%	333	9	+47%	4	0.11	79%
Illinois ›	5,336	42	+70%	802	6	+26%	9	0.07	69%
Hawaii ›	594	42	+149%	97	7	+85%	1.4	0.1	78%