



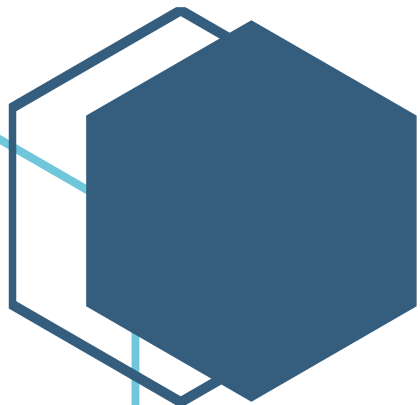
Central Iowa COVID19 Update

Wednesday, April 14, 2021



Statistical Consulting

Dr. Meg Schaeffer





Quick Stats¹

	Polk County	Iowa
Percent of population with 1 dose	14%	12.5%
Percent of population with 2 doses	23%	26%
7d Lab Test Positivity	5.8%	5.0%
14d Lab Test Positivity	5.8%	4.9%
Total cases per 100,000 the last 7d	135	120
Total cases per 100,000 the last 14d	277	243
Average daily cases the last 7d	95	540
Average 7-day new cases per 100,000	19	17

¹All data are sourced from <https://coronavirus.iowa.gov/pages/case-counts> with previous days refreshed daily. When recent data are unavailable, data from <https://github.com/nytimes/covid-19-data> may be used. Population of Polk County used is 490,161. Population of Iowa used is 3.155 million. Averages and percent positivity are subject to change with retrospectively refreshed data.

Critical Points, Media, and Research

- State average cases are up slightly; Polk County cases are stable. Hospitalizations have dropped to about 40 per day on average.
- The CDC vaccine advisory committee met today to evaluate seven cases of blood clots occurring after receipt of the J&J vaccine in women ages 18-48, one of whom died. The committee requested a risk-benefit analysis and more data to make an informed decision. Recommendations could include continued use, a prolonged pause, discontinuation of use, or adjusted requirements.
 - Governor Reynolds does not believe the pause in the administration of the J&J vaccine will significantly affect progress. However, local and national health officials are concerned the unavailability will affect harder to reach, vulnerable people such as homeless.
 - Similar reports were evaluated by the European vaccine advisory body regarding the Astra Zeneca vaccine, which uses a similar viral-vector mechanism in its vaccine. Many European countries are either limiting or dropping use of the Astra Zeneca vaccine.
 - <https://www.nytimes.com/2021/04/14/health/cdc-jj-vaccine.html>
 - [Amid J&J pause, Gov. Kim Reynolds says she would take vaccine again \(desmoinesregister.com\)](https://www.desmoinesregister.com/story/news/politics/2021/04/14/amid-jj-pause-gov-kim-reynolds-says-she-would-take-vaccine-again/5251140002/)
- [Airline middle seats are COVID risk, CDC says, with caveats - Los Angeles Times \(latimes.com\)](https://www.latimes.com/2021-04-14/airline-middle-seats-are-covid-risk-cdc-says-with-caveats-latimes-com)
- [COVID vaccine passports: More cruise lines and airlines climb aboard - CNET](https://www.cnet.com/2021/04/14/covid-vaccine-passports-more-cruise-lines-and-airlines-climb-aboard/)
- [COVID-19 and cancer: 1 year on - The Lancet Oncology](https://www.thelancet.com/2021-04-14/covid-19-and-cancer-1-year-on)

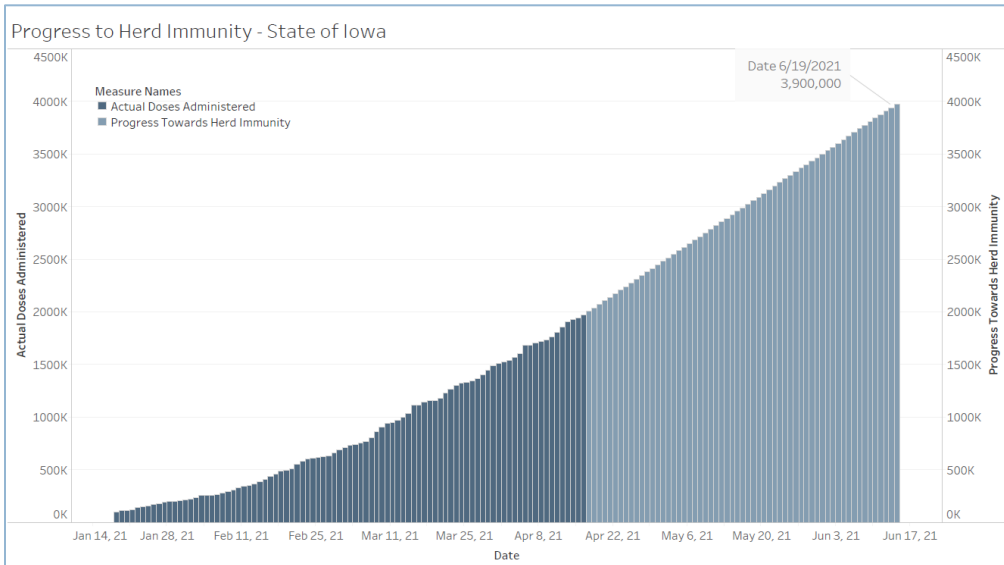
Vaccine

- [More Colleges Say They'll Require Students to Have COVID Vaccines for Fall: NPR](https://www.npr.org/2021/04/14/9781111111111)
- [We Could Soon Have Vaccines for Cancer, HIV Thanks to COVID-19 Vaccine \(insider.com\)](https://www.insider.com/2021-04-14/we-could-soon-have-vaccines-for-cancer-hiv-thanks-to-covid-19-vaccine)



Vaccination Progress

- [Iowa Vaccination Progress](#)
- [Vaccination progress in the US](#)

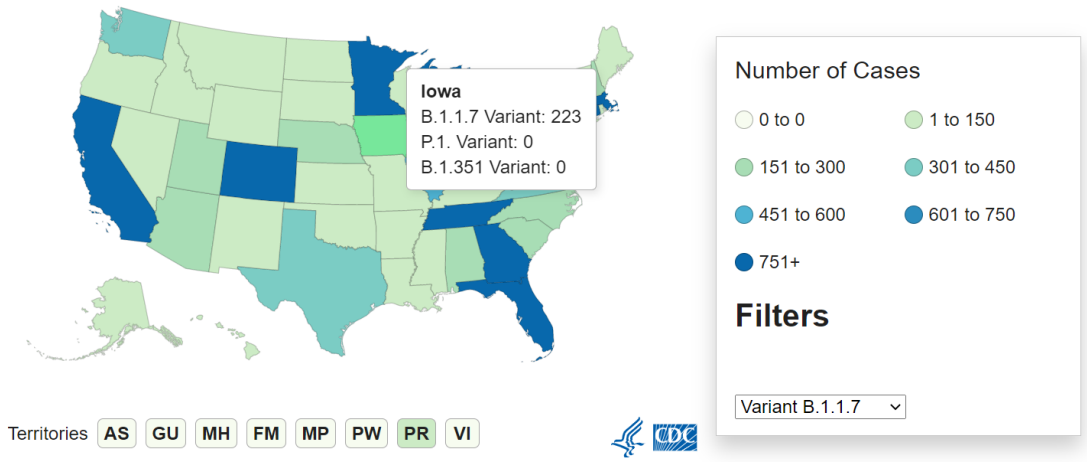


Assumptions: 20% of the population or higher will have acquired immunity; children under the age of 16 cannot be vaccinated, therefore 78% of adults need to be vaccinated. Two doses regimen.

Variant Prevalence

Variant	Reported Cases in US	Number of Jurisdictions Reporting
B.1.1.7	20915	52
B.1.351	453	36
P.1	497	31

Cases of Variants of Concern in the United States*†



Central Iowa COVID19 Update

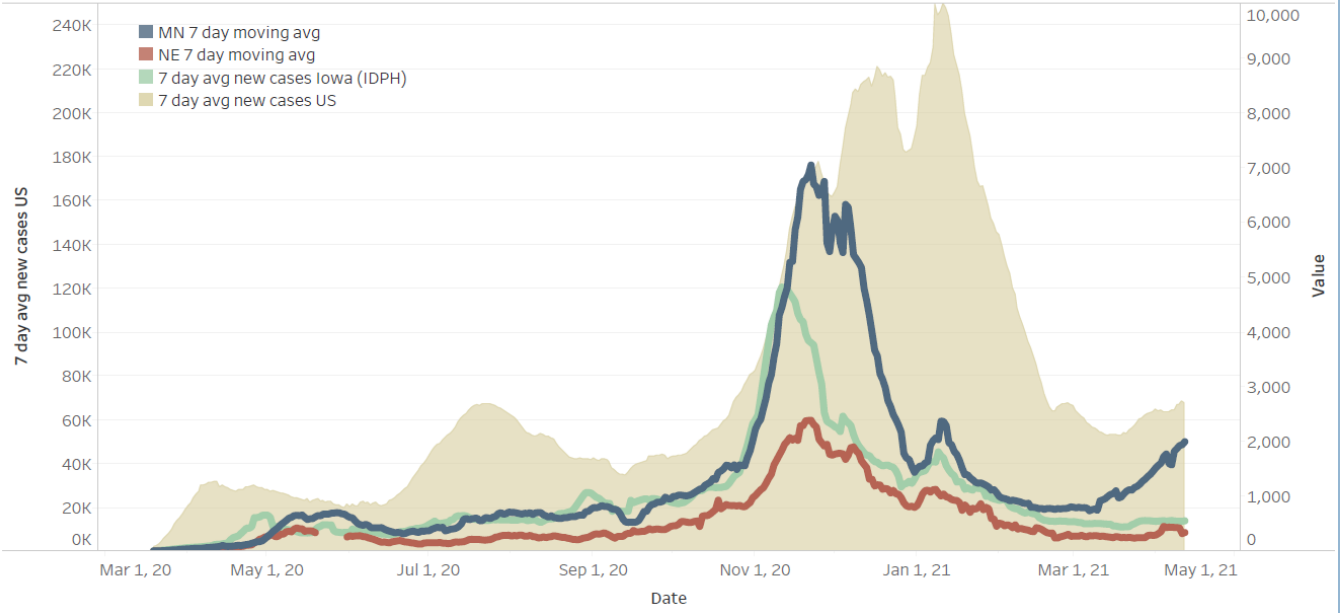


School Statistics – Polk County (Updated weekly on Mondays)

Rate of Student/Staff Cases Per 1,000																						
Week Ending	1-Nov	8-Nov	15-Nov	22-Nov	29-Nov	13-Dec	20-Dec	27-Dec	10-Jan	17-Jan	24-Jan	31-Jan	7-Feb	14-Feb	22-Feb	1-Mar	7-Mar	15-Mar	29-Mar	5-Apr	12-Apr	
DMPS	0.2	4.0	0.5	0.5	0.2	0.7	0.7	0.4	4.0	1.9	2.6	0.2	2.5	0.8	1.3	0.6	0.7	0.5	0.1	0.2	0.1	
Ankeny	3.8	3.8	4.3	4.3	4.5	3.3	3.3	1.9	1.8	5.9	3.8	3.1	2.8	2.3	1.6	2.0	1.0	0.7	1.0	1.5	1.5	
Waukee	5.8	10.3	9.4	6.5	4.6	3.5	1.7	1.7	4.5	5.0	2.4	3.3	3.0	3.0	3.0	2.3	1.7	1.7	1.9	0.8	0.6	
WDM	2.8	5.7	11.0	4.7	1.1	2.7	1.9	0.6	4.0	4.2	1.6	2.2	1.6	2.4	1.1	1.3	1.1	1.6	1.2	0.6	1.1	
Johnston	6.3	8.3	10.4	7.1	5.4	2.3	1.7	0.3	4.6	3.4	2.1	3.3	2.3	1.6	3.3	3.7	1.6	1.1	2.4	0.3	1.1	
SE Polk	4.7	5.0	8.3	7.9	7.7	3.0	4.6	2.7	3.4	5.0	3.9	2.9	3.4	3.0	2.1	2.4	2.1	2.3	1.3	2.0	1.3	
Urbandale	1.8	2.0	10.8	8.5	5.8	3.5	3.5	2.0	6.0	3.0	2.5	2.8	3.3	4.0	2.3	2.5	2.8	2.8	0.3	2.0	2.0	
DCG		6.0	10.4	9.5	13.3	4.7	0.9	2.8	2.2	2.2	2.5	1.3	1.3	1.9	2.5	1.9	1.3	2.5	4.1	1.3	1.6	
Bondurant		8.3	7.9	13.4	13.4	3.7	2.8	7.4	0.0		0.9	12.5	19.0	11.6	11.6	0.9	0.5	2.3	3.7	1.9	4.2	
North Polk		4.5	5.6	5.6	4.5	1.1	1.7	2.3	3.9	1.1	7.9	5.6	10.1	1.7	3.9	11.3	1.1	0.6	1.7	1.1	0.0	
Ballard		0.0	0.0	8.2	0.6	1.2	1.2	0.0	0.0	4.1	1.2	1.2	6.4	6.4	5.8	2.3	1.2	1.2	4.1	1.2	1.2	
Saydel		7.5	12.7	3.0	0.0	2.2	3.0	2.2	3.7	3.7	3.7	0.7	1.5	3.0	2.2	3.7	0.7	0.0	1.5	0.0	0.0	

Students/Staff in Quarantine																						
Week Ending	1-Nov	8-Nov	15-Nov	22-Nov	29-Nov	13-Dec	20-Dec	27-Dec	10-Jan	17-Jan	24-Jan	31-Jan	7-Feb	14-Feb	22-Feb	1-Mar	7-Mar	15-Mar	22-Mar	29-Mar	5-Apr	12-Apr
DMPS	N/A	N/A	N/A	N/A	N/A	N/A	N/A	N/A	N/A	N/A	N/A	N/A	220	198	235	223	193	203	116	134	141	115
Ankeny	225	225	370	370	273	172	107	87	132	116	125	138	178	106	88	75	45	53		36	101	94
Waukee	332	500	575	384	160	76	113	136	156	195	95	108	127	128	94	102	65	79	32	62	41	24
WDM	146	204	239	70	12	38	19	14	114	55	54	83	69	39	46	22	25	41	7	33	28	22
Johnston	586	667	527	318	286	73	78	73	116	147	126	109	100	106	150	137	84	85		68	48	68
SE Polk	186	211	307	380	401	126	121	129	89	125	129	96	84	86	92	105	93	77		45	54	34
Urbandale	39	97	180	223	179	49	32	34	43	71	78	50	67	77	59	54	51	51		27	38	35
DCG		80	159	216	82	69	46	41	33	43	42	44	45	59	79	44	37	37		29	27	30
Bondurant		148	160	167	138	97	55	62	<6	N/A	28	68	86	69	69	11	18	18		0	21	38
North Polk		103	101	90	61	55	51	46	30	19	35	57	52	50	39	39	34	31	26	13	16	12
Ballard				77	40	34	16		28	12	25	20	18	40	30	9	16	18		2	2	2
Saydel		109	88	65	46	30	33	24	39	26	27	26	33	19	23	18	18	15	6	7	3	4
Total	1514	2344	2706	2360	1678	819	671	646	780	809	764	799	1079	977	1004	839	679	708	187	456	520	478

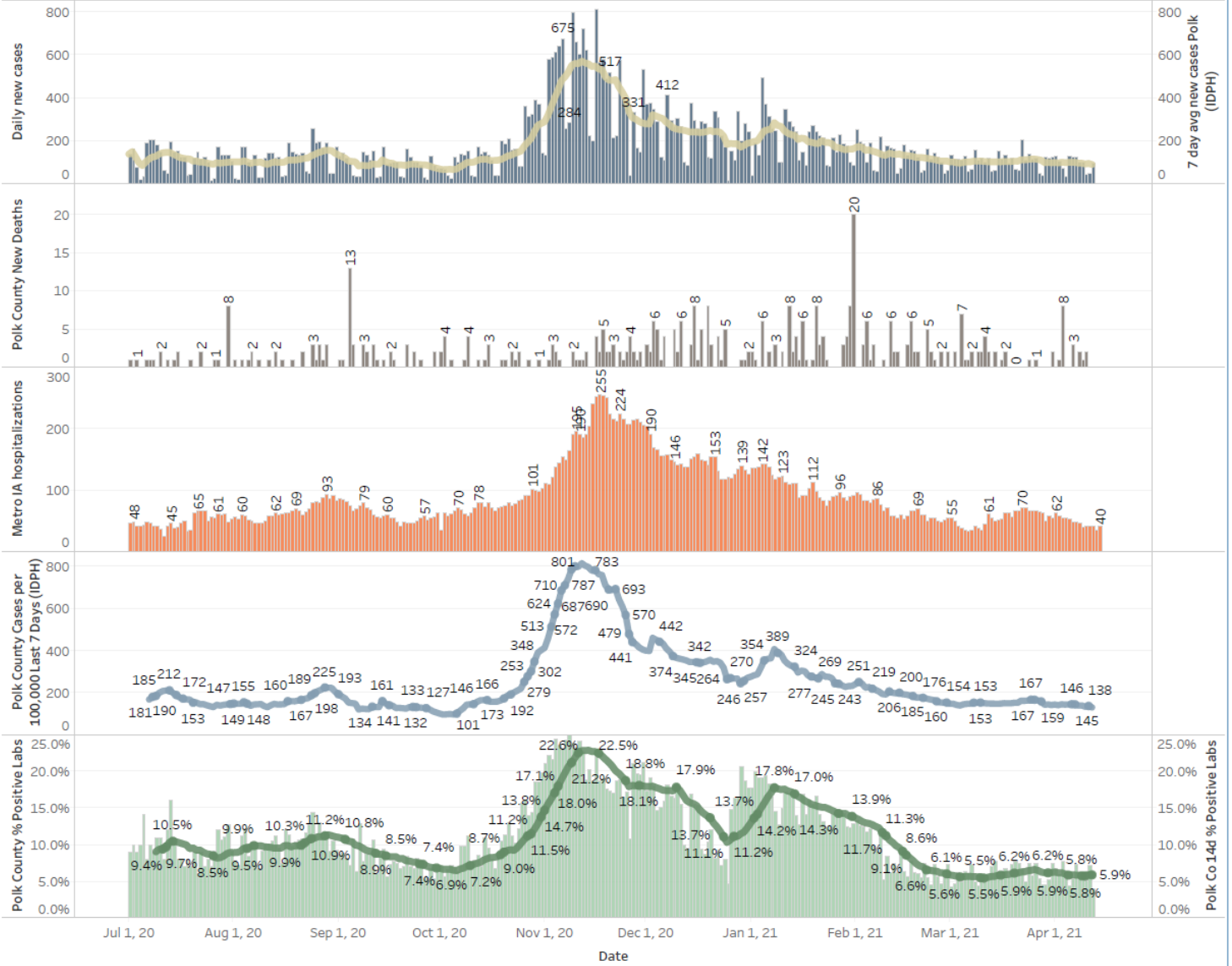
US and Border State Cases



Central Iowa COVID19 Update



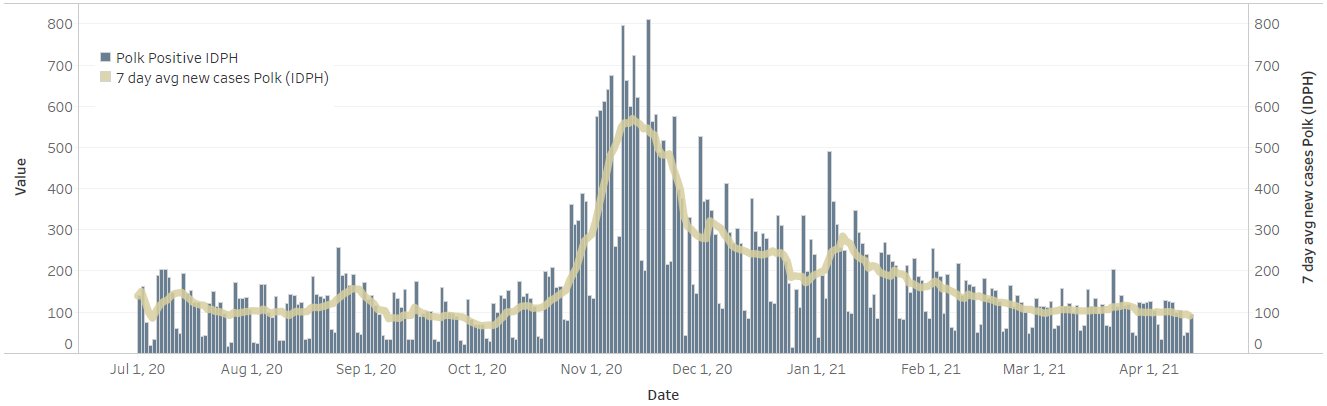
Polk County Activity View



Central Iowa COVID19 Update



Polk County Cases by Day and 7d Moving Average



Iowa Cases by Day and 7d Moving Average

