



Central Iowa COVID19 Update

Monday, November 9, 2020



Aperio

Statistical Consulting

Dr. Meg Schaeffer





Quick Stats¹

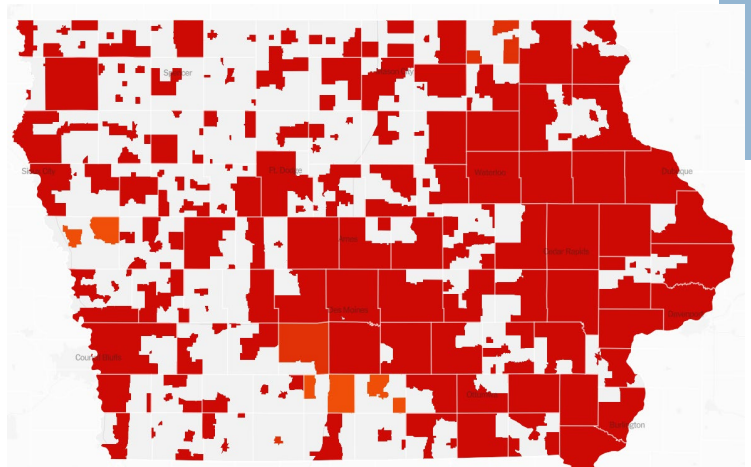
	Polk County	Iowa
7d Lab Test Positivity	18.3%	21.2%
14d Lab Test Positivity	17.3%	20.5%
Total cases per 100,000 the last 7d	650	805
Total cases per 100,000 the last 14d	1040	1290
Average daily cases the last 7d	455	3628
Average 7-day new cases per 100,000	93	115

¹All data are sourced from <https://coronavirus.iowa.gov/pages/case-counts> with previous days refreshed daily. When recent data are unavailable, data from <https://github.com/nytimes/covid-19-data> may be used. Population of Polk County used is 490,161. Population of Iowa used is 3.155 million. Averages and percent positivity are subject to change with retrospectively refreshed data.

Critical Points

- Polk County activity is increasing exponentially. Iowa has the third highest case rate per population of all states.
- Polk County average daily cases have nearly doubled in a week, and the state is averaging over 3,000 new cases per day.
- Iowa activity is increasing at a rate three times that of the rest of the country.
- An important article published in CDC's research summary cited school reopening and public mass gatherings as significant drivers of community transmission. The study involved a review of strategies and case impacts in 131 countries.
- [https://www.thelancet.com/journals/laninf/article/PIIS1473-3099\(20\)30785-4/fulltext](https://www.thelancet.com/journals/laninf/article/PIIS1473-3099(20)30785-4/fulltext)
- Early Pfizer vaccine data shows >90% efficacy. Pfizer indicated they will apply for Emergency Use Authorization at the end of November, after which the FDA will take several weeks to review safety data before issuing a decision. Pfizer estimates 15-20 million doses will be available by the end of the year, with each recipient requiring two doses.
- <https://apnews.com/article/pfizer-vaccine-effective-early-data-4f4ae2e3bad122d17742be22a2240ae8>
- The State of Utah issued sweeping, statewide mitigation plans to combat hospital capacity stress and surging cases. The governor's plan includes a mask mandate, but allows for businesses to remain open if they enforce employee protections.
- <https://coronavirus.utah.gov/state-of-emergency/>

	TOTAL CASES	PER 100,000	DAILY AVG. IN LAST 7 DAYS	▼ PER 100,000	WEEKLY CASES PER CAPITA FEWER MORE March 1 Nov. 8
+ North Dakota MAP »	54,310	7,127	1,323.1	173.6	
+ South Dakota MAP »	55,404	6,263	1,154.3	130.5	
+ Iowa MAP »	155,583	4,931	3,498	110.9	
+ Wisconsin MAP »	281,910	4,842	5,783.9	99.3	
+ Nebraska MAP »	83,969	4,341	1,757.6	90.9	
+ Wyoming MAP »	17,310	2,991	512.4	88.5	
+ Montana MAP »	39,679	3,713	883.4	82.7	
+ Minnesota MAP »	180,916	3,208	4,312.9	76.5	
+ Illinois MAP »	488,980	3,859	9,160	72.3	
+ Utah MAP »	132,621	4,137	2,301.6	71.8	



[NYT US Activity](#)



School Statistics – Polk County

New Student/Staff Cases		
Week Ending	1-Nov	9-Nov
DMPS*	5	15
Ankeny	46	46
Waukee	67	118
WDM	25	43
Johnston	44	58
SE Polk	33	35
Urbandale	7	8
DCG		19
Bondurant		18
North Polk		8
Saydel		10
Ames		
Total	227	323

Students/Staff in Quarantine		
Week Ending	1-Nov	9-Nov
DMPS*	N/A	N/A
Ankeny	225	225
Waukee	332	500
WDM	146	170
Johnston	586	667
SE Polk	186	211
Urbandale	39	97
DCG		80
Bondurant		148
North Polk		103
Saydel		109
Ames		
Total	1514	2310

*DMPS combines student and staff cases

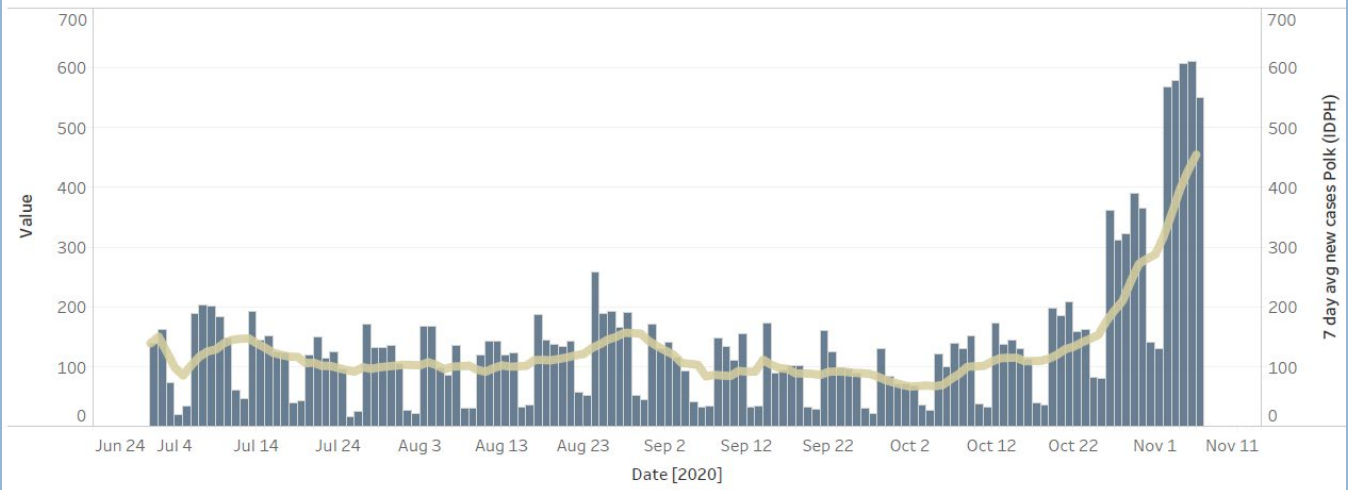
Research & Media

- An analysis of 51,000 UK adults identified increased confidence in government to handle the pandemic was related to higher compliance with government guidelines. Mental health and wellbeing, worries about future adversities, and social isolation and loneliness were unrelated to compliance.
- <https://www.medrxiv.org/content/10.1101/2020.10.19.20215376v1>
- Universal mask wearing could prevent 100,000 deaths over the next four months.
- <https://www.jwatch.org/na52734/2020/11/05/how-many-lives-could-be-saved-mask-wearing>
- Ely Lilly received EUA approval for a single antibody therapy. In early, limited data, the therapy shows a slight reduction in duration in hospitalization if administered early in the course of infection. Only 50,000 doses will be available through the end of the year.
- <https://www.nytimes.com/2020/11/09/health/covid-antibody-treatment-eli-lilly.html?action=click&module=RelatedLinks&pgtype=Article>

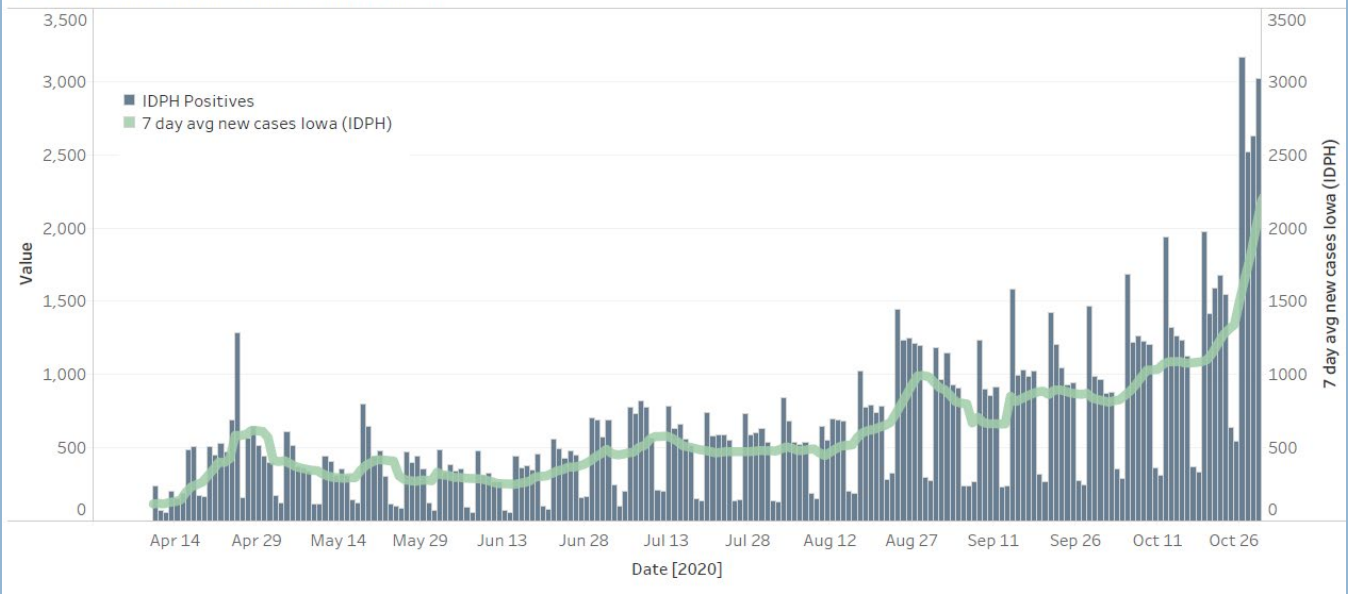
Central Iowa COVID19 Update



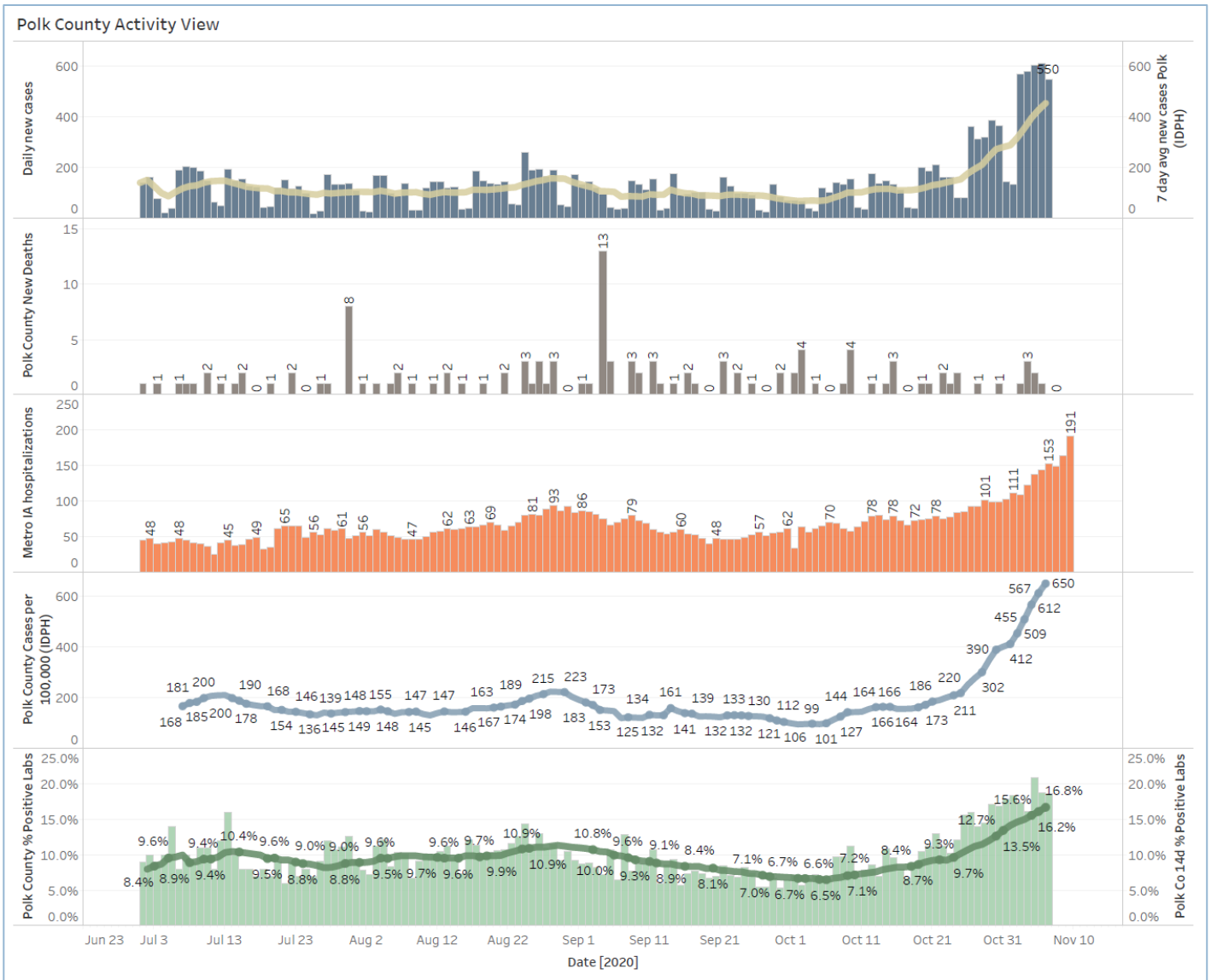
Polk County Cases by Day and 7d Moving Average



Iowa Cases by Day and 7d Moving Average



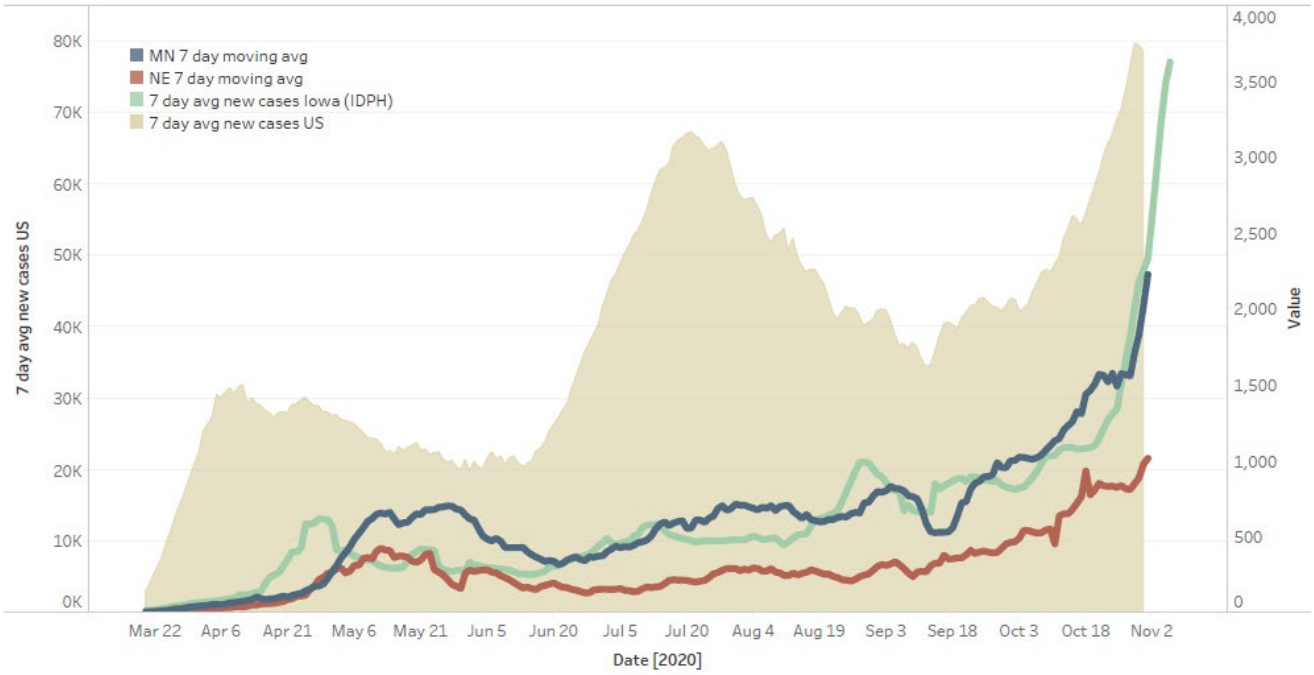
Central Iowa COVID19 Update



Central Iowa COVID19 Update



US and Border State Cases



US, Iowa, MN, NE New Daily Cases

