



# Central Iowa COVID19 Update

---

Wednesday, January 20, 2021



Statistical Consulting

Dr. Meg Schaeffer





## Quick Stats<sup>1</sup>

|                                      | Polk County | Iowa  |
|--------------------------------------|-------------|-------|
| 7d Lab Test Positivity               | 10.9%       | 8.6%  |
| 14d Lab Test Positivity              | 13.3%       | 11.7% |
| Total cases per 100,000 the last 7d  | 254         | 212   |
| Total cases per 100,000 the last 14d | 605         | 536   |
| Average daily cases the last 7d      | 176         | 956   |
| Average 7-day new cases per 100,000  | 36          | 30    |

<sup>1</sup>All data are sourced from <https://coronavirus.iowa.gov/pages/case-counts> with previous days refreshed daily. When recent data are unavailable, data from <https://github.com/nytimes/covid-19-data> may be used. Population of Polk County used is 490,161. Population of Iowa used is 3.155 million. Averages and percent positivity are subject to change with retrospectively refreshed data.

## Critical Points, Media, and Research

- Polk County and state cases are stable following a brief, post-holiday surge. The national trend is showing a slight decline.
- Influenza activity remains extremely low. [CADE - Iowa Flu Reports](#)
- [Covid: Pfizer-BioNTech vaccine likely to be effective against variant in UK \(cnbc.com\)](#)
- The first airport screening program will launch in Cedar Rapids. [FAA approves airport coronavirus screenings, paving way for first program to launch in Iowa - The Washington Post](#)
- Researchers from Cambridge and the Imperial College of London built a website to assist in assessing ventilation and transmission risk in enclosed spaces. [Airborne.cam - evaluate COVID-19 risk of infection from airborne transmission](#)
- Young adults may have cognitive challenges in COVID-19 recovery. [Frequent neurocognitive deficits after recovery from mild COVID-19 | Brain Communications | Oxford Academic \(oup.com\)](#)
- [CDC Library: COVID-19 Science Update: 12/22/2020](#)

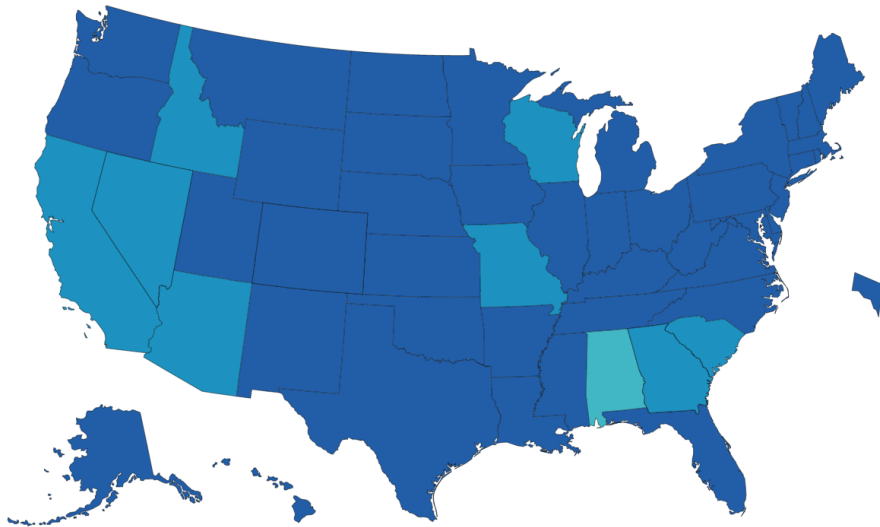
## Vaccine

- In Iowa, 156k doses of vaccine were administered, averaging ~4,000 per day (vaccination started on 12/14). At this rate, it will take almost three years to reach herd immunity percentage estimated at 70. [COVID19 Vaccine Administration.pdf \(iowa.gov\)](#)
- Manufacturing updates in a Belgium production facility is slowing vaccine distribution in Canada and Europe. [Pfizer tells Canada it will not receive any Covid-19 vaccine doses next week - CNN](#)
- Flexible dosing strategies compared to strict (reserving half of initial doses for second doses), as per the majority of US plans, could prevent at least 24% of cases occurring within the vaccination period. <https://www.acpjournals.org/doi/10.7326/m20-8137>
- Vaccination progress in the US. [CDC COVID Data Tracker](#)
- Vaccine development tracker. <https://www.nytimes.com/interactive/2020/science/coronavirus-vaccine-tracker.html>

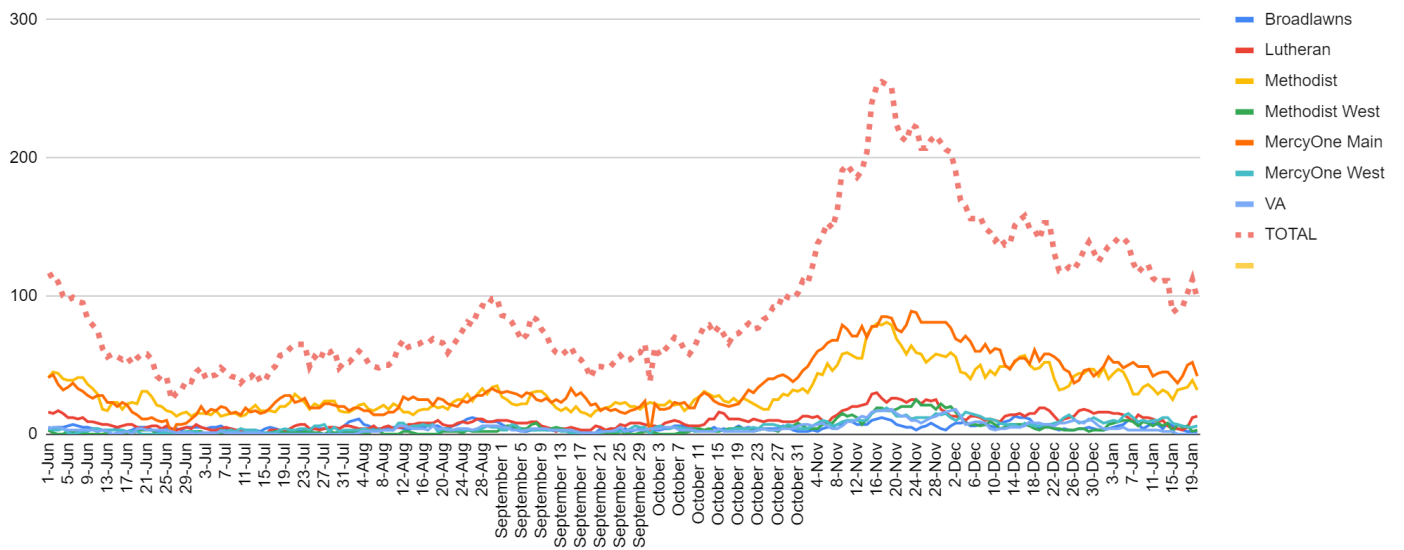


## Vaccination Progress

Total Doses Administered Reported to the CDC by State/Territory and for Selected Federal Entities per 100,000



## Metro Hospitalizations by Hospital and Total, YTD



Central Iowa COVID19 Update



School Statistics – Polk County (Updated per week on Mondays)

| Rate of Student/Staff Cases Per 1,000 |       |       |        |        |        |        |        |        |        |        |
|---------------------------------------|-------|-------|--------|--------|--------|--------|--------|--------|--------|--------|
| Week Ending                           | 1-Nov | 8-Nov | 15-Nov | 22-Nov | 29-Nov | 13-Dec | 20-Dec | 27-Dec | 10-Jan | 17-Jan |
| DMPS*                                 | 0.2   | 4.0   | 0.5    | 0.5    | 0.2    | 0.7    | 0.7    | 0.4    | 4.0    | 1.9    |
| Ankeny                                | 3.8   | 3.8   | 4.3    | 4.3    | 4.5    | 3.3    | 1.9    | 1.8    | 5.9    | 3.8    |
| Waukee                                | 5.8   | 10.3  | 9.4    | 6.5    | 4.6    | 3.5    | 1.7    | 1.7    | 4.5    | 5.0    |
| WDM                                   | 2.8   | 5.7   | 11.0   | 4.7    | 1.1    | 2.7    | 1.9    | 0.6    | 4.0    | 4.2    |
| Johnston                              | 6.3   | 8.3   | 10.4   | 7.1    | 5.4    | 2.3    | 1.7    | 0.3    | 4.6    | 3.4    |
| SE Polk                               | 4.7   | 5.0   | 8.3    | 7.9    | 7.7    | 3.0    | 4.6    | 2.7    | 3.4    | 5.0    |
| Urbandale                             | 1.8   | 2.0   | 10.8   | 8.5    | 5.8    | 3.5    | 3.5    | 2.0    | 6.0    | 3.0    |
| DCG                                   |       | 6.0   | 10.4   | 9.5    | 13.3   | 4.7    | 0.9    | 2.8    | 2.2    | 2.2    |
| Bondurant                             |       | 8.3   | 7.9    | 13.4   | 13.4   | 3.7    | 2.8    | 7.4    | 0.0    |        |
| North Polk                            |       | 4.5   | 5.6    | 5.6    | 4.5    | 1.1    | 1.7    | 2.3    | 3.9    | 1.1    |
| Ballard                               |       | 0.0   | 0.0    | 8.2    | 0.6    | 1.2    | 1.2    | 0.0    | 0.0    | 4.1    |
| Saydel                                |       | 7.5   | 12.7   | 3.0    | 0.0    | 2.2    | 3.0    | 2.2    | 3.7    | 3.7    |

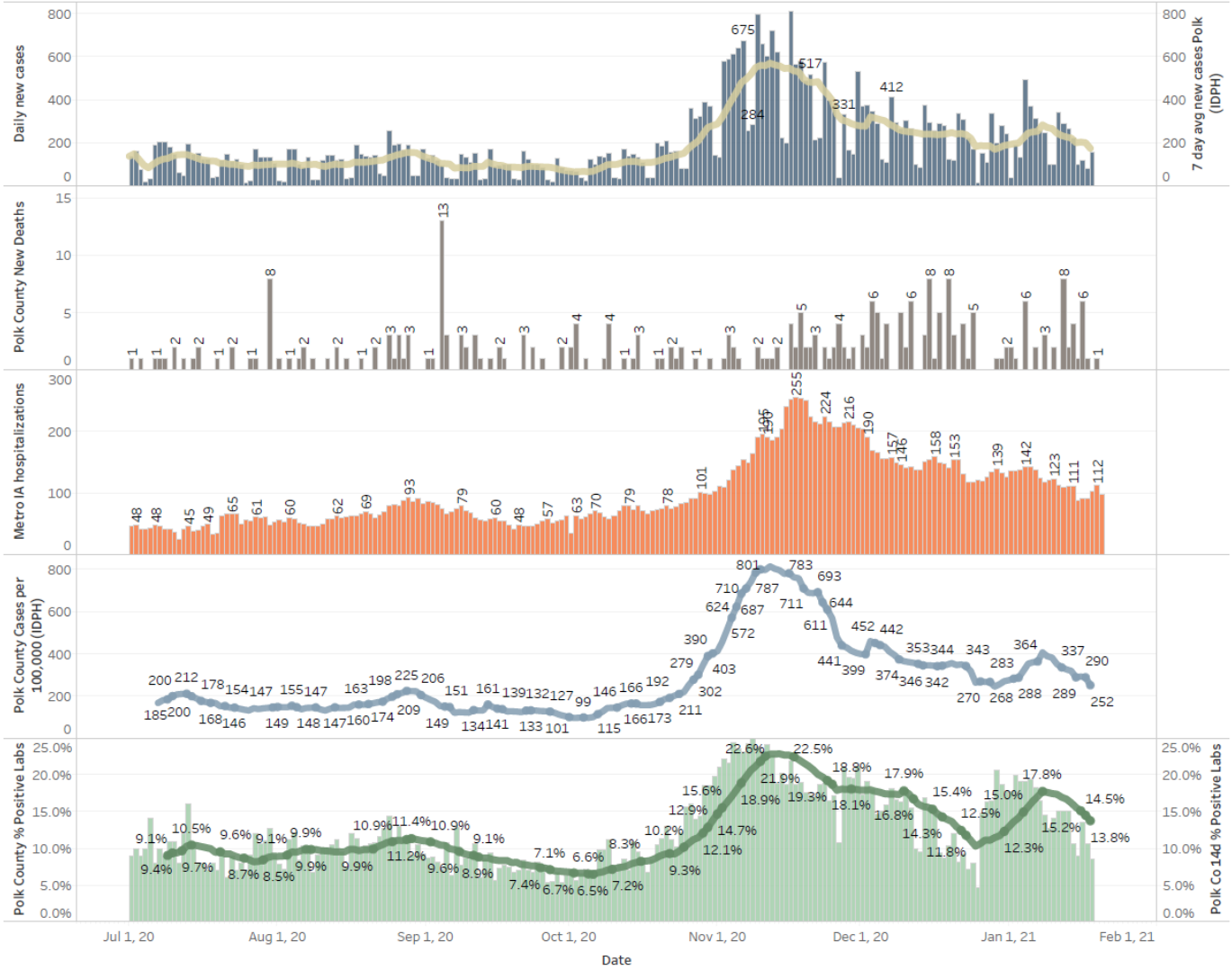
| Students/Staff in Quarantine |       |       |        |        |        |        |        |        |        |        |
|------------------------------|-------|-------|--------|--------|--------|--------|--------|--------|--------|--------|
| Week Ending                  | 1-Nov | 8-Nov | 15-Nov | 22-Nov | 29-Nov | 13-Dec | 20-Dec | 27-Dec | 10-Jan | 17-Jan |
| DMPS*                        | N/A   | N/A   | N/A    | N/A    | N/A    | N/A    | N/A    | N/A    | N/A    | N/A    |
| Ankeny                       | 225   | 225   | 370    | 370    | 273    | 172    | 107    | 87     | 132    | 116    |
| Waukee                       | 332   | 500   | 575    | 384    | 160    | 76     | 113    | 136    | 156    | 195    |
| WDM                          | 146   | 204   | 239    | 70     | 12     | 38     | 19     | 14     | 114    | 55     |
| Johnston                     | 586   | 667   | 527    | 318    | 286    | 73     | 78     | 73     | 116    | 147    |
| SE Polk                      | 186   | 211   | 307    | 380    | 401    | 126    | 121    | 129    | 89     | 125    |
| Urbandale                    | 39    | 97    | 180    | 223    | 179    | 49     | 32     | 34     | 43     | 71     |
| DCG                          |       | 80    | 159    | 216    | 82     | 69     | 46     | 41     | 33     | 43     |
| Bondurant                    |       | 148   | 160    | 167    | 138    | 97     | 55     | 62     | <6     | N/A    |
| North Polk                   |       | 103   | 101    | 90     | 61     | 55     | 51     | 46     | 30     | 19     |
| Ballard                      |       |       |        | 77     | 40     | 34     | 16     |        | 28     | 12     |
| Saydel                       |       | 109   | 88     | 65     | 46     | 30     | 33     | 24     | 39     | 26     |
| Total                        | 1514  | 2344  | 2706   | 2360   | 1678   | 819    | 671    | 646    | 780    | 809    |

\*DMPS does not report quarantined students; DMPS also reports cases only daily

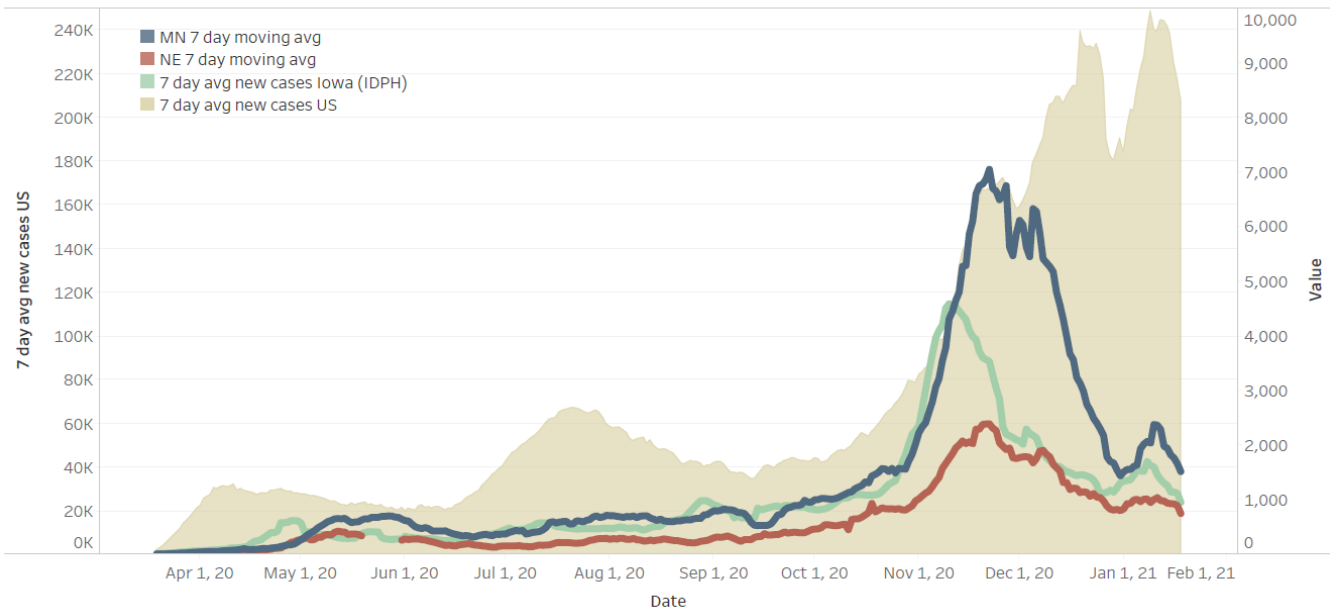
# Central Iowa COVID19 Update



## Polk County Activity View



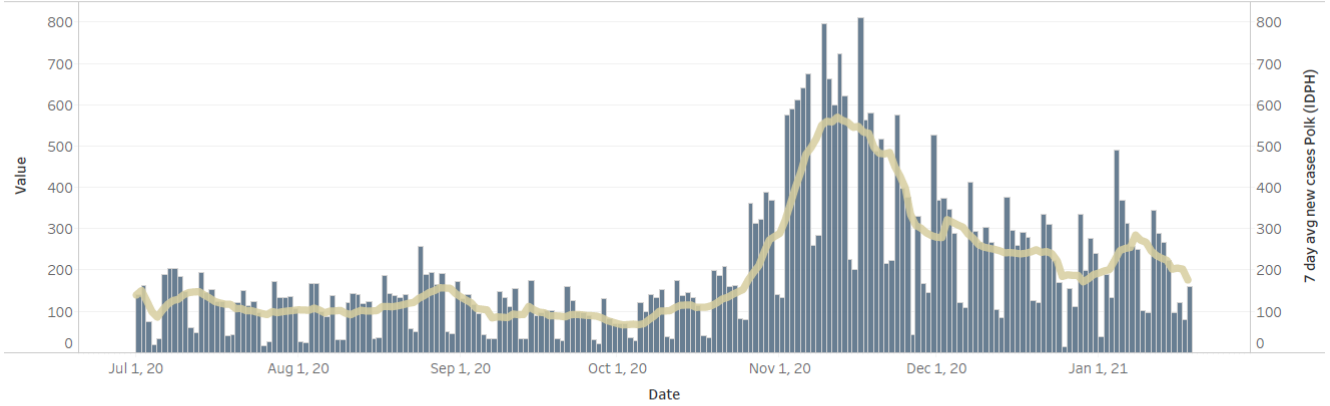
## US and Border State Cases



# Central Iowa COVID19 Update



### Polk County Cases by Day and 7d Moving Average



### Iowa Cases by Day and 7d Moving Average

