



Central Iowa COVID19 Update

Wednesday, August 18, 2021



Aperio

Statistical Consulting

Dr. Meg Schaeffer





Quick Stats¹

	Polk County	Iowa
Percent of population with 1 dose	5.7%	4.2%
Percent of population with 2 doses	55.4%	50%
7d Lab Test Positivity	11%	13%
Total cases per 100,000 the last 7d	173	187
CDC County Transmission Level*	High	
Average daily cases the last 7d	121	843

* [CDC COVID Data Tracker](#)

All data are sourced from <https://coronavirus.iowa.gov/pages/case-counts> with previous days refreshed daily. When recent data are unavailable, data from <https://github.com/nytimes/covid-19-data> may be used. Population of Polk County used is 490,161.

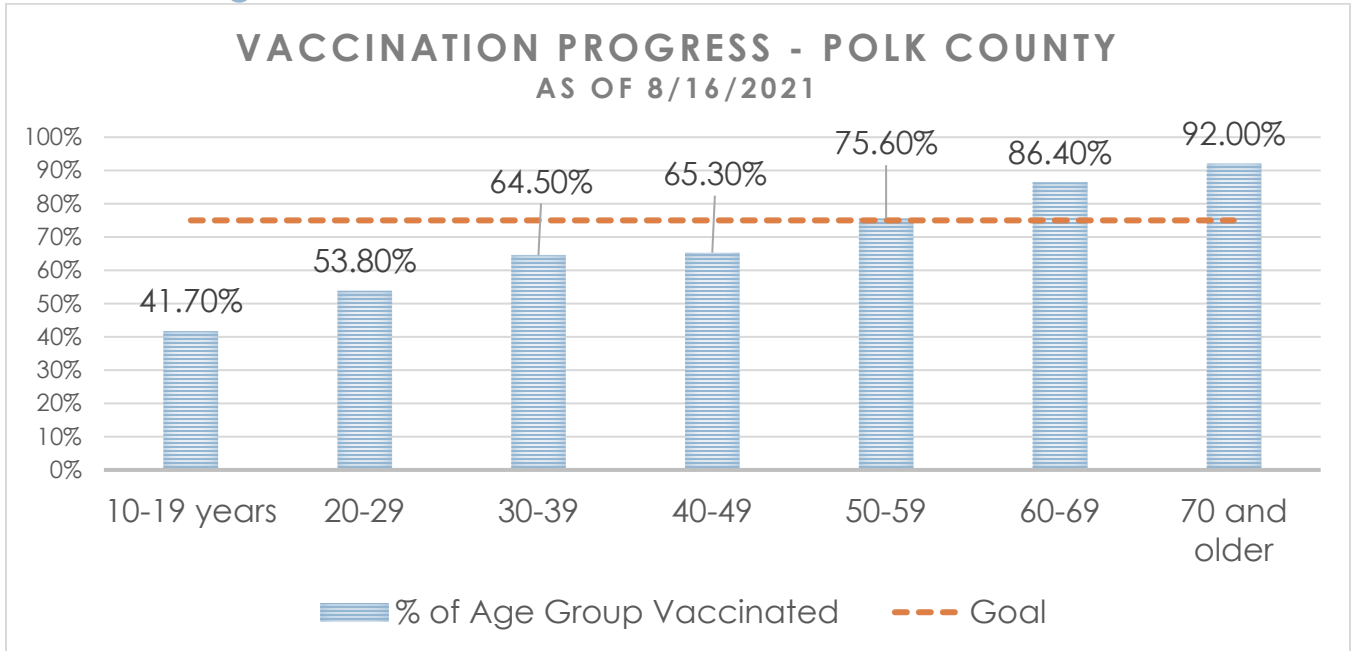
Population of Iowa used is 3.155 million. Averages and percent positivity are subject to change with retrospectively refreshed data.

Critical Points, Media, and Research

- Iowa and Polk County are still experiencing a surge. Hospitalizations remain around 70 in the metro, though statewide hospitalizations are rising. Average daily vaccinations have risen by about 1,000 more per than several weeks ago.
- Booster doses are now recommended eight months following the second dose. Healthcare workers will be prioritized to receive booster doses.
- [Joint Statement from HHS Public Health and Medical Experts on COVID-19 Booster Shots | CDC](#)
- [Des Moines schools close administration offices after COVID cases](#)
- [Data shows rapid growth in school-reported COVID cases - ABC13 Houston](#)
- Non-pharmaceutical interventions, such as masking and distancing, are needed to help prevent transmission of the Delta variant from both vaccinated and unvaccinated individuals. [Vaccinated and unvaccinated individuals have similar viral loads in communities with a high prevalence of the SARS-CoV-2 delta variant](#)
- Risk of infection with the Delta variant might be higher with longer time since initial vaccination. [Correlation of SARS-CoV-2 Breakthrough Infections to Time-from-vaccine; Preliminary Study](#)
- Risk of infection with SARS-CoV-2 might be higher 5 months after vaccination, particularly for older adults, although additional analyses are needed to clarify risk of hospitalization or death. Since August 1, 2021, Israel has offered a third dose of BNT162b2 to adults 60 and older in Israel who were vaccinated more than 5 months previously. [Elapsed time since BNT162b2 vaccine and risk of SARS-CoV-2 infection in a large cohort](#)
- Fully vaccinated adults infected with the Delta variant had a faster decline in viral load, implying a shorter duration of viral shedding during hospitalization, compared with unvaccinated adults. [Virological and serological kinetics of SARS-CoV-2 Delta variant vaccine-breakthrough infections: a multi-center cohort study](#)
- [REACT-1 round 13 final report: exponential growth, high prevalence of SARS-CoV-2 and vaccine effectiveness associated with Delta variant in England during May to July 2021](#)
- Although COVID-19 duration is usually short in children, some children experience prolonged illness. [Illness duration and symptom profile in symptomatic UK school-aged children tested for SARS-CoV-2](#)
- [Thrombosis and thrombocytopenia after vaccination against and infection with SARS-CoV-2: a population-based cohort analysis](#)
- [Long Covid in adults discharged from UK hospitals after Covid-19: A prospective, multicentre cohort study using the ISARIC WHO Clinical Characterisation Protocol](#)
- [An Iowa pediatrician's advice on COVID-19 ahead of school year](#)
- [Covid vaccine booster shot: Pfizer submits data to FDA for approval](#)
- [U.S. to Advise Boosters for Most Americans 8 Months After Vaccination](#)
- [Over 5,000 students quarantine or isolate due to Covid in single Florida school district](#)



Vaccine Progress

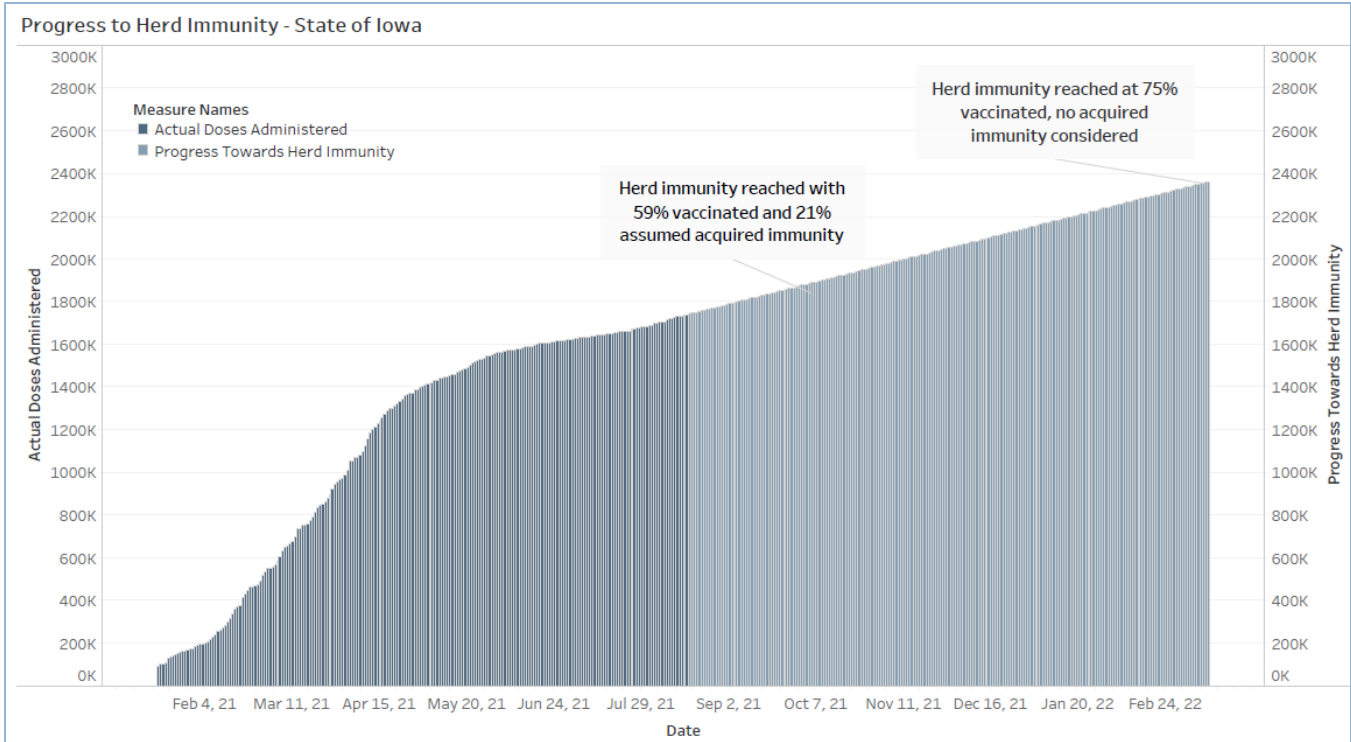


Number of Doses Administered (by date of report)	Initiated Vaccination (1st dose/No Janssen)	Completed Vaccination (2nd dose/Janssen)	Total Polk Co Residents Partially/Fully Vaccinated	Total Population of Polk County (all ages)
529,202	22,582	260,533	283,115	490,161

Age Group	Vaccinated	% Age Group Vaccinated	Estimated Census Population*
10-19 years	27,117	43.50%	62,295
20-29	37,860	54.80%	69,065
30-39	45,935	65.60%	69,982
40-49	43,332	66.30%	65,361
50-59	45,589	76.30%	59,727
60-69	42,843	87.00%	49,269
70 and older	40,439	92.40%	43,742
Total	283,115	67.50%	419,441

*U.S Census Bureau Polk County (2019 1yr estimate). Census predetermined age data includes non-eligible ages 10 and 11 years old.

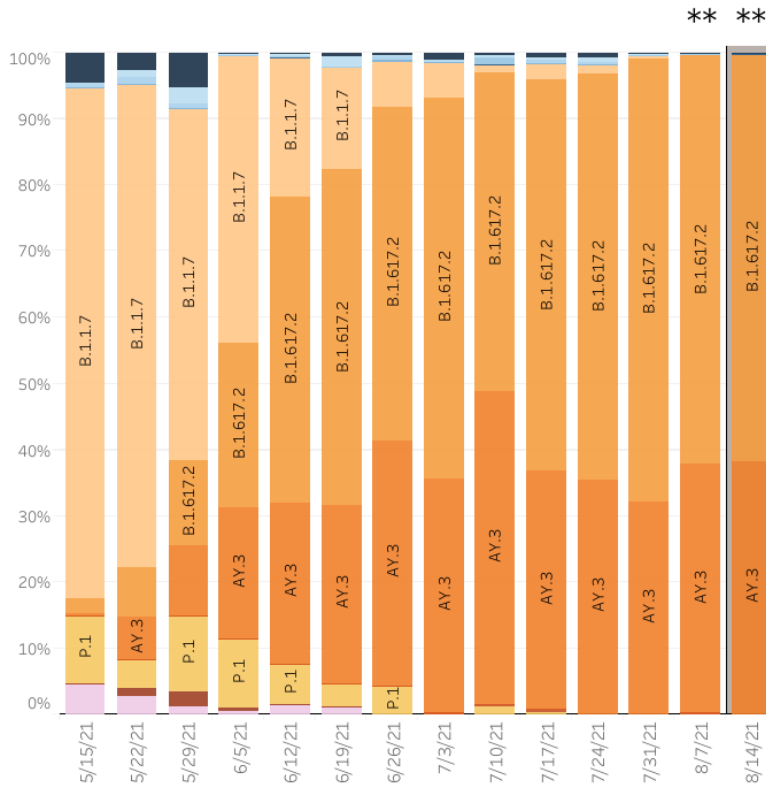
Central Iowa COVID19 Update



Variant Prevalence

HHS Region 7: 5/9/2021 – 8/14/2021

HHS Region 7: 8/8/2021 – 8/14/2021 NOWCAST



* Enumerated lineages are VOI/VOC or are circulating >1% in at least one HHS region during at least one two week period; remaining lineages are aggregated as "Other".

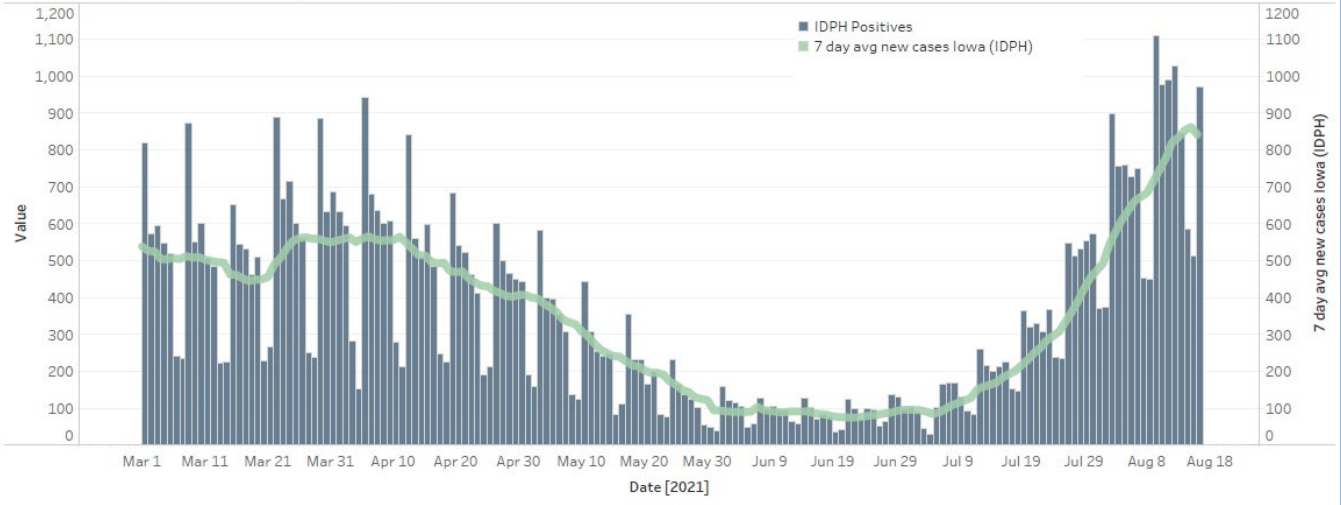
** These data include Nowcast estimates, which are modeled projections that may differ from weighted estimates generated at later dates

Sublineages of P.1 and B.1.351 are aggregated with the parent lineage and included in parent lineage's proportion. AY.3.1 is aggregated with its parent lineage AY.3. AY.4-AY.12 aggregated with B.1.617.2

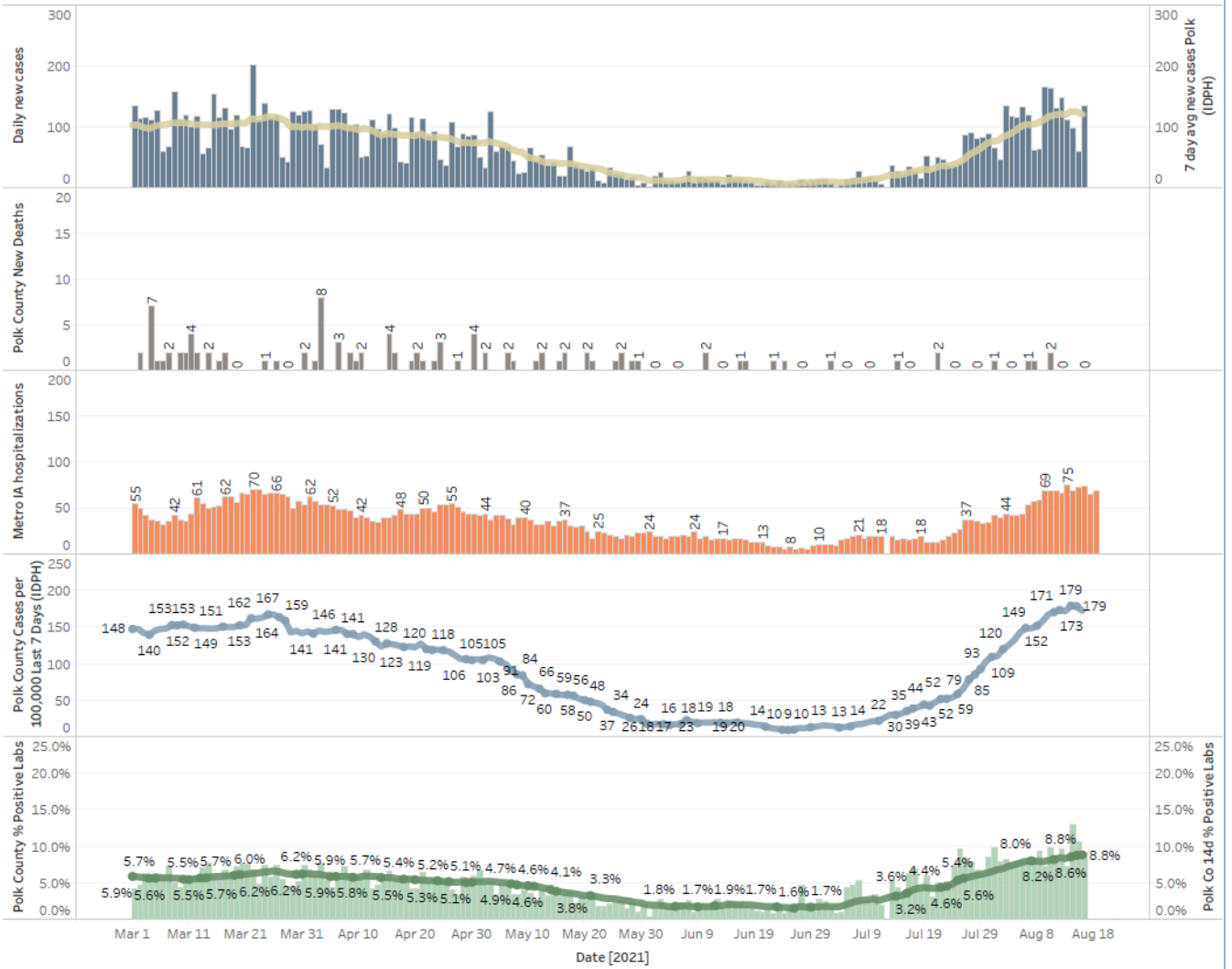
Central Iowa COVID19 Update



Iowa Cases by Day and 7d Moving Average



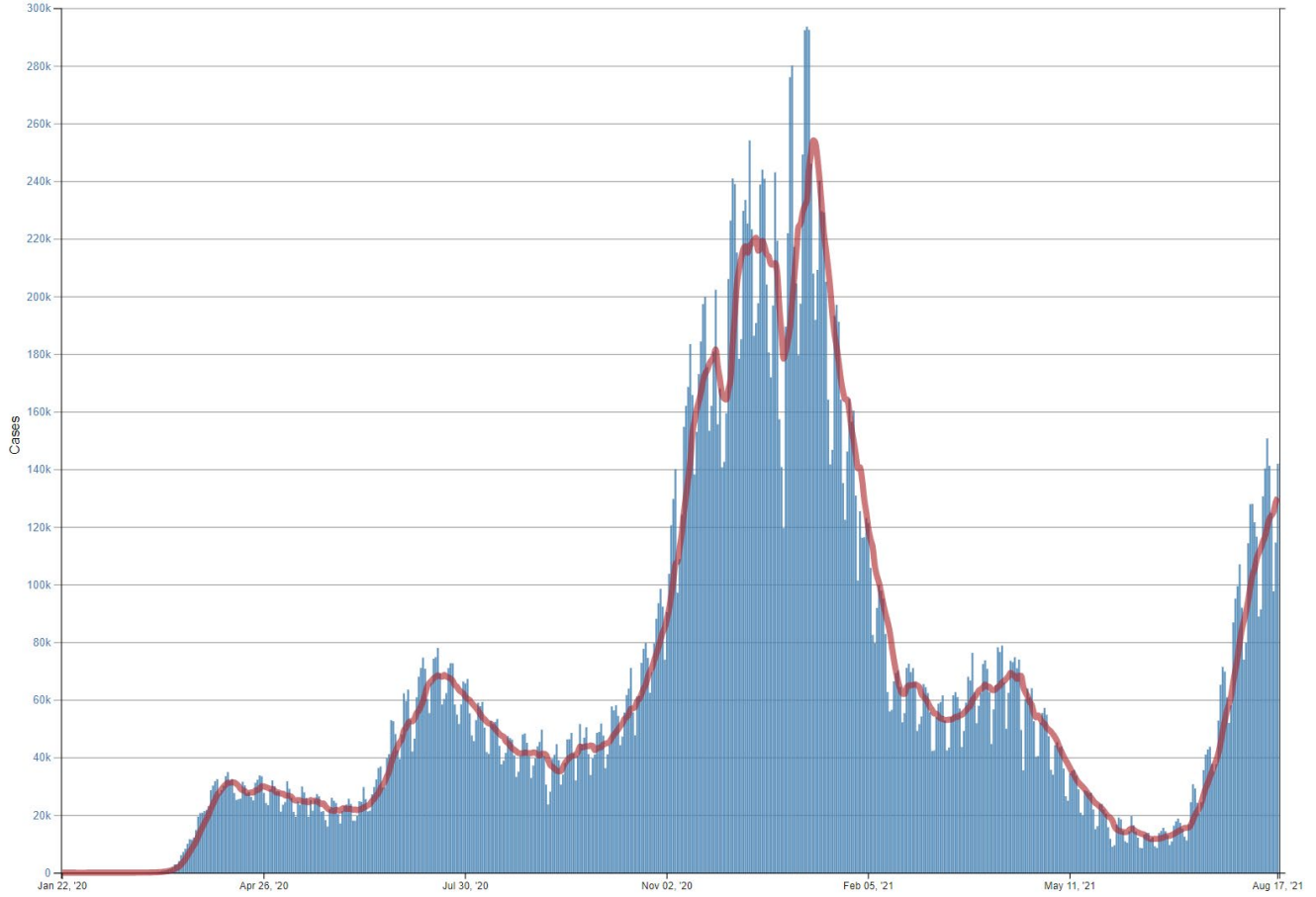
Polk County Activity View - Since Jan 1 2021 through Predictive



Central Iowa COVID19 Update



Daily Trends in Number of COVID-19 Cases in the United States Reported to CDC



	CASES DAILY AVG.	PER 100,000	14-DAY CHANGE	HOSPITALIZED DAILY AVG.	PER 100,000	14-DAY CHANGE	DEATHS DAILY AVG.	PER 100,000	FULLY VACCINATED
United States	140,893	42	+47%	83,890	25	+54%	809.1	0.24	51%
Mississippi ›	3,526	118	+91%	1,637	55	+58%	29.4	0.99	36%
Florida ›	24,517	114	+38%	16,117	75	+42%	138.1	0.64	51%
Louisiana ›	5,215	112	+20%	2,665	57	+42%	55.0	1.18	39%
Alabama ›	3,728	76	+42%	2,662	54	+62%	26.1	0.53	36%
Arkansas ›	2,103	70	Flat	1,424	47	+23%	28.4	0.94	39%
South Carolina ›	3,523	68	+63%	1,497	29	+86%	19.0	0.37	42%
Tennessee ›	4,456	65	+78%	1,932	28	+53%	21.3	0.31	40%
Kentucky ›	2,897	65	+85%	1,532	34	+84%	8.0	0.18	47%
Georgia ›	6,905	65	+76%	4,725	44	+75%	28.7	0.27	40%
Alaska ›	415	57	+49%	118	16	+10%	1.7	0.23	46%