



# Central Iowa COVID19 Update

---

Tuesday, October 6, 2020



Aperio

Statistical Consulting

Dr. Meg Schaeffer





# Central Iowa COVID19 Update

## Quick Stats<sup>1</sup>

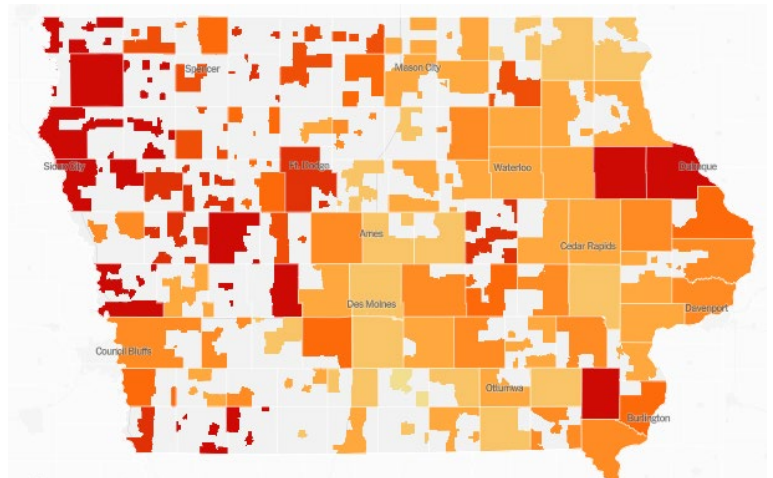
	Polk County	Iowa
7d Lab Test Positivity	5%	8%
14d Lab Test Positivity	6%	9%
Total cases per 100,000	91	172
Average daily cases the last 7d	68	776
Average 7-day new cases per 100,000	17	25

<sup>1</sup>All data are sourced from <https://coronavirus.iowa.gov/pages/case-counts> with previous days refreshed daily. When recent data are unavailable, data from <https://github.com/nytimes/covid-19-data> may be used. Population used is 490,161. Averages and percent positivity are subject to change with retrospectively refreshed data.

## Critical Points

- Polk County continues a stable, slow reduction in daily cases and are no longer above 100 cases per 100,00. The county is still averaging almost 70 new cases per day.
- Iowa activity is the 6<sup>th</sup> highest per capita in the country. Iowa hasn't left the top 10 states per capita for weeks. Activity in Western Iowa is driving case counts as well as hospitalizations.
- Alarming, statewide hospitalizations hit the highest point of the pandemic at 413 today.

	TOTAL CASES	PER 100,000	CASES IN LAST 7 DAYS	PER 100,000	WEEKLY CASES PER CAPITA
					March 1 - Oct. 4
+ North Dakota <a href="#">MAP</a>	23,865	3,132	2,826	371	
+ South Dakota <a href="#">MAP</a>	24,418	2,760	2,877	325	
+ Wisconsin <a href="#">MAP</a>	139,941	2,403	17,443	300	
+ Montana <a href="#">MAP</a>	15,035	1,407	2,612	244	
+ Utah <a href="#">MAP</a>	77,630	2,421	7,002	218	
Guam	3,586	2,128	331	196	
+ Iowa <a href="#">MAP</a>	92,914	2,945	6,120	194	
+ Idaho <a href="#">MAP</a>	43,964	2,460	3,463	194	
+ Nebraska <a href="#">MAP</a>	47,807	2,471	3,744	194	
+ Arkansas <a href="#">MAP</a>	87,013	2,883	5,771	191	



## [NYT US Activity](#)

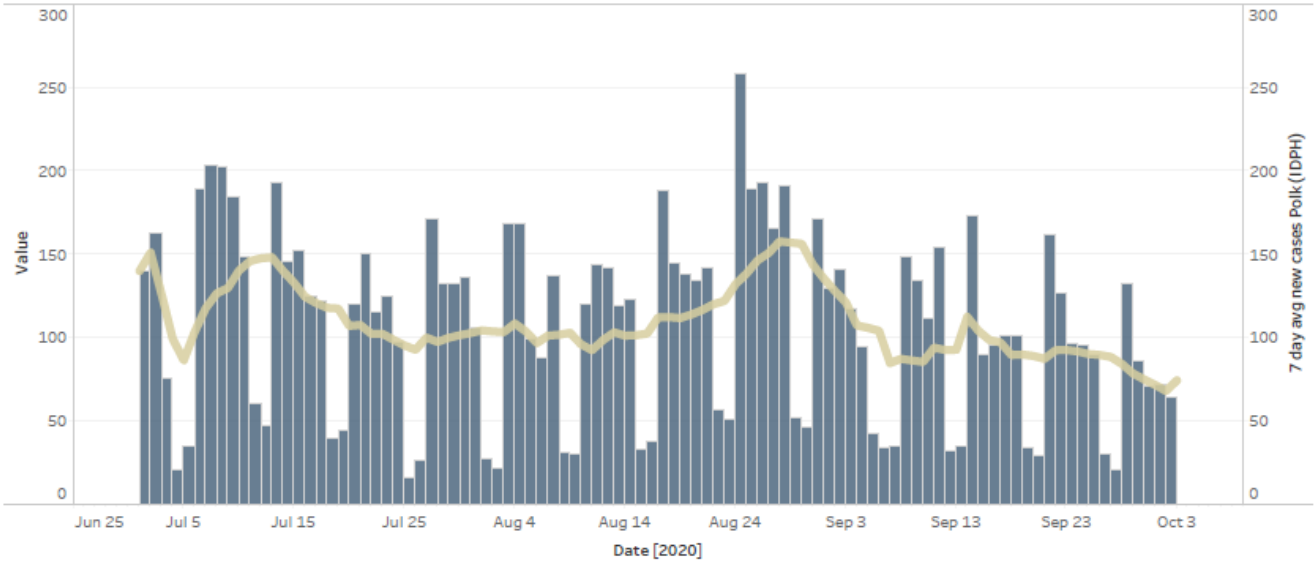
## Research & Media

- West Des Moines Public Schools staff member dies from COVID-19.
- <https://www.desmoinesregister.com/story/news/local/west-des-moines/2020/10/05/covid-19-iowa-west-des-moines-school-employee-dies-coronavirus/3632641001/>
- The White House is blocking new guidelines issued by the FDA on the release of the COVID-19 vaccine as the guidelines would prevent delivery of the vaccine before the election.
- <https://www.nytimes.com/live/2020/10/05/world/covid-trump/the-white-house-blocks-new-coronavirus-vaccine-guidelines>
- What to expect from first generation vaccines?
- [https://www.thelancet.com/journals/lancet/article/PIIS0140-6736\(20\)31976-0/fulltext](https://www.thelancet.com/journals/lancet/article/PIIS0140-6736(20)31976-0/fulltext)

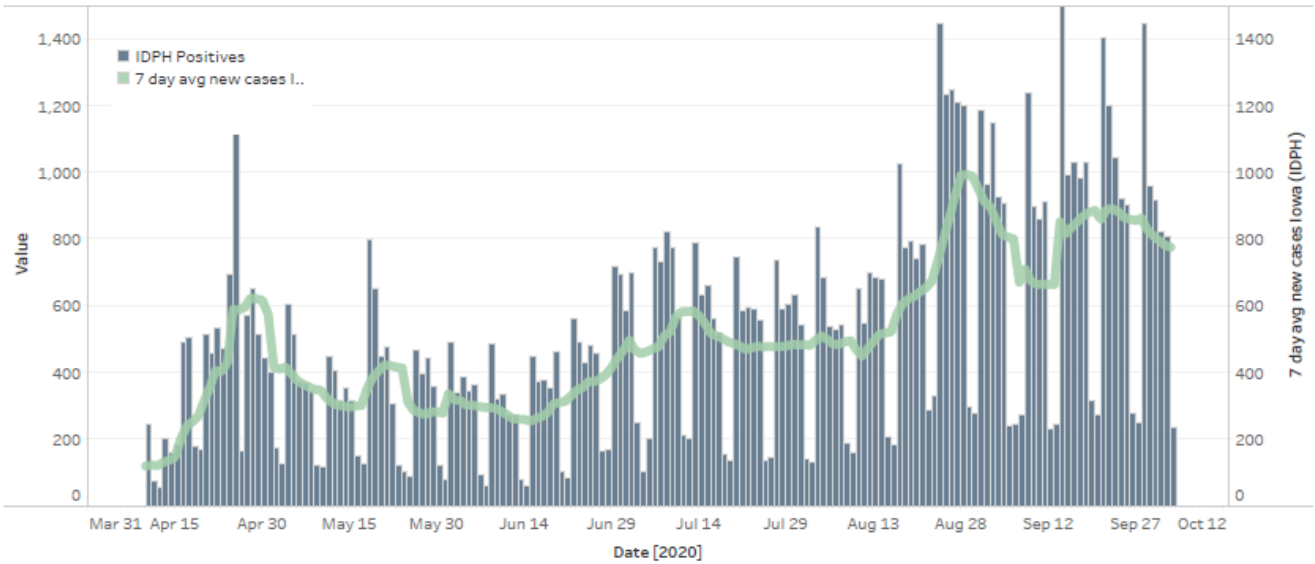
# Central Iowa COVID19 Update



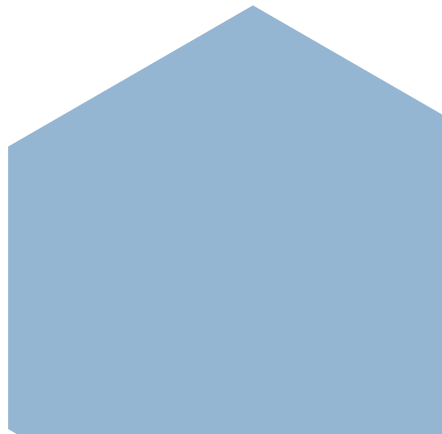
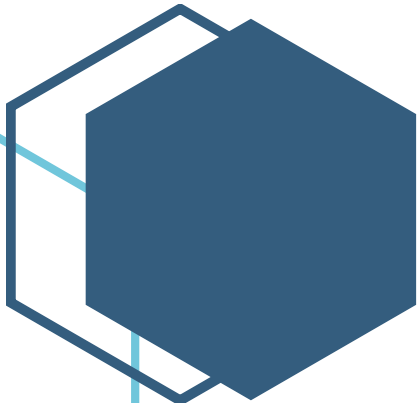
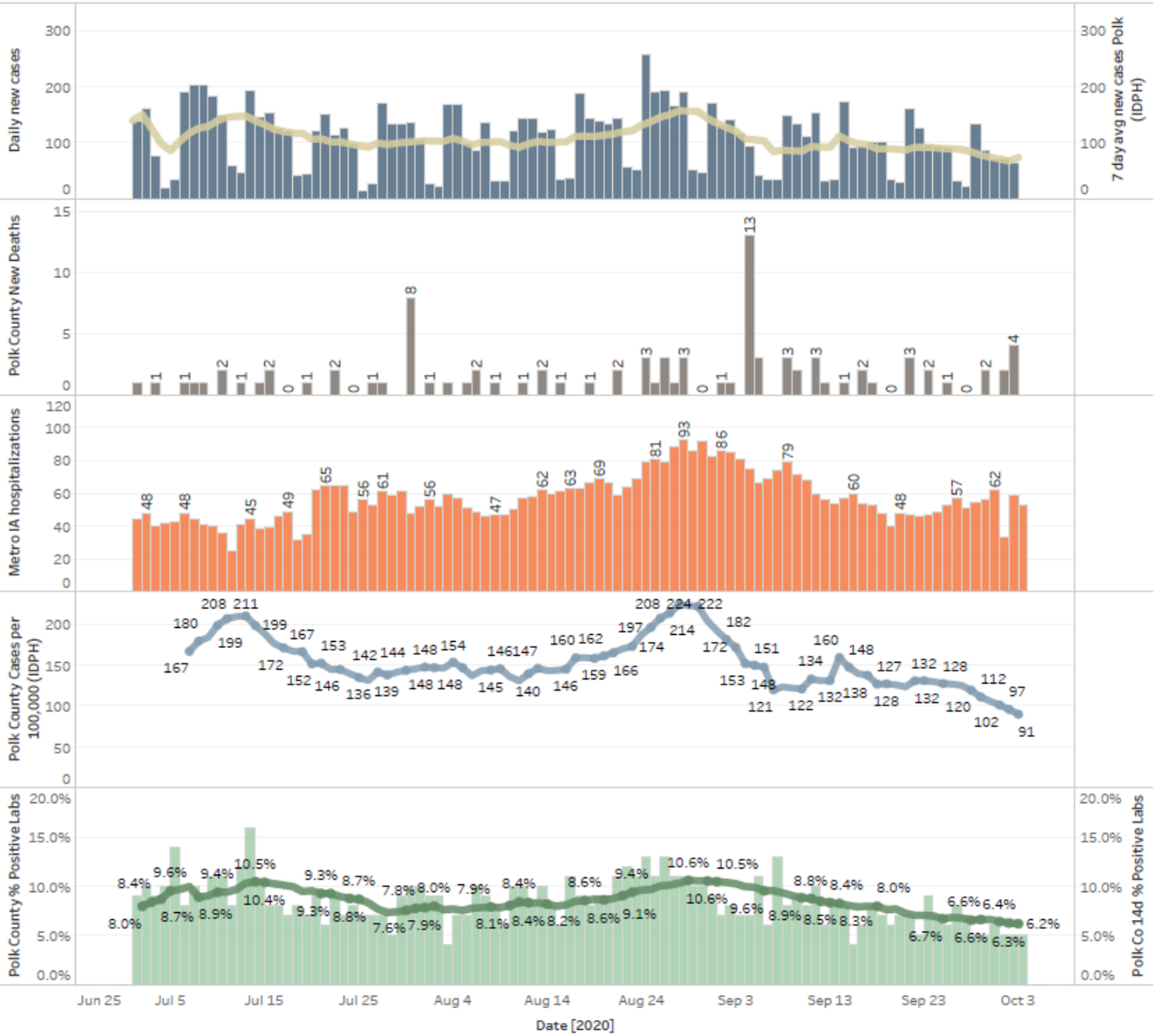
### Polk County Cases by Day and 7d Moving Average



### Iowa Cases by Day and 7d Moving Average



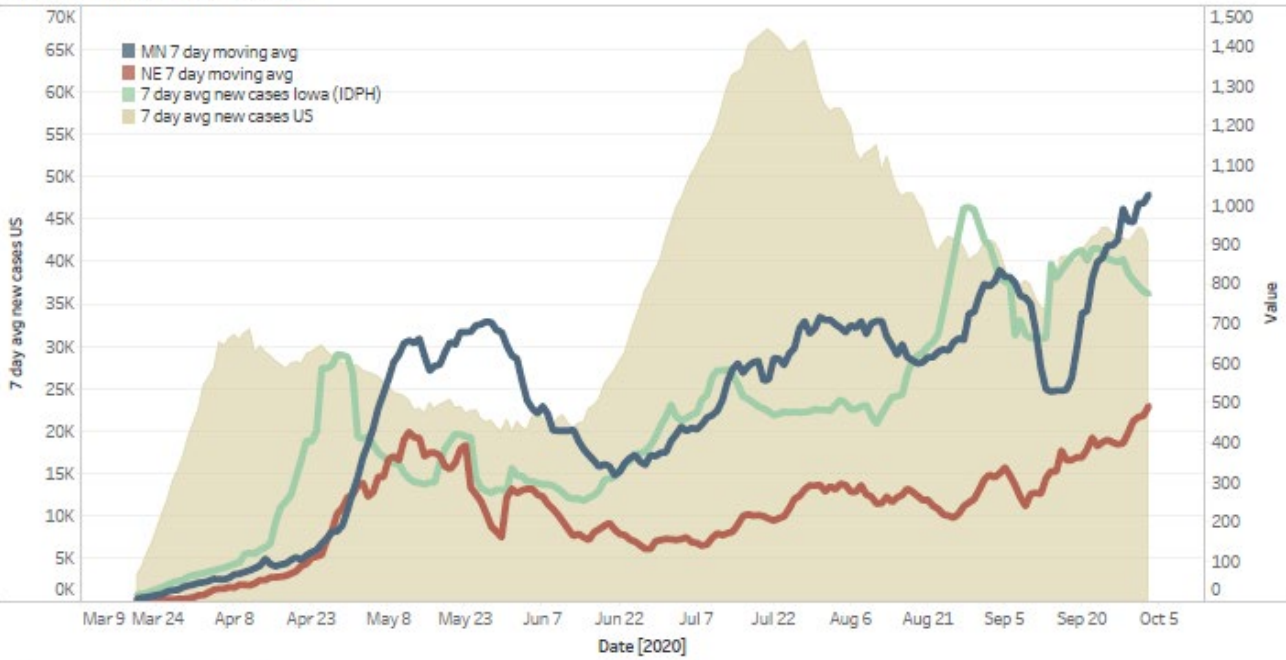
### Polk County Activity View



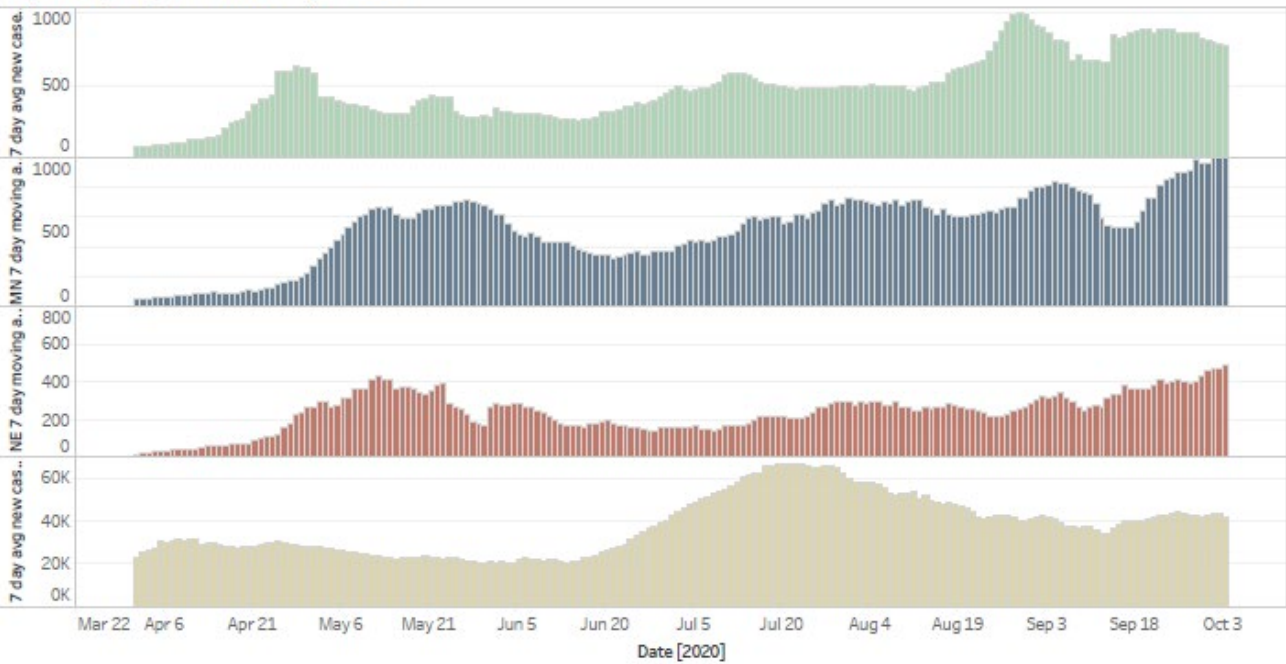
# Central Iowa COVID19 Update



## US and Border State Cases

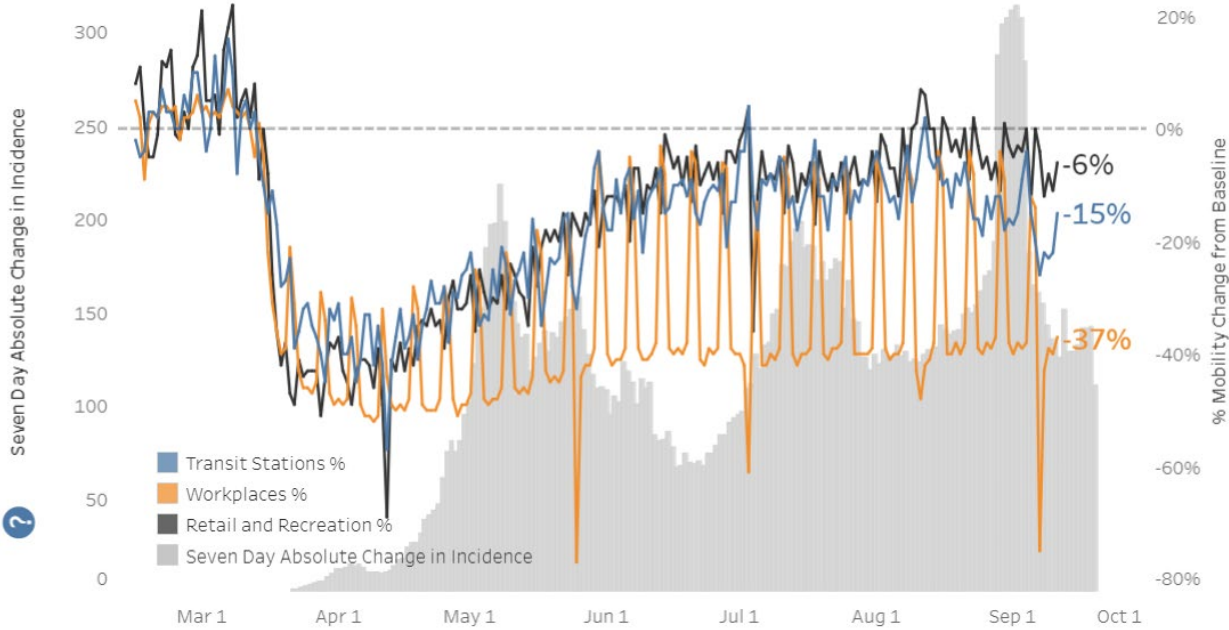


## US, Iowa, MN, NE New Daily Cases





Polk County, IA



<p><b>WORKPLACES</b></p> <p><b>-37%</b></p>	
<p><b>RETAIL AND RECREATION</b></p> <p><b>-6%</b></p>	
<p><b>TRANSIT STATIONS</b></p> <p><b>-15%</b></p>	
<p><b>% AT HOME</b></p> <p><b>29%</b></p>	
<p><b>MOBILITY INDEX</b></p> <p><b>3.9</b></p>	

<https://covid.cdc.gov/covid-data-tracker/#mobility>