



# Central Iowa COVID19 Update

---

Monday, February 15, 2021



Statistical Consulting

Dr. Meg Schaeffer





## Quick Stats<sup>1</sup>

	Polk County	Iowa
7d Lab Test Positivity	8.5%	6.2%
14d Lab Test Positivity	10.1%	8.0%
Total cases per 100,000 the last 7d	176	135
Total cases per 100,000 the last 14d	409	303
Average daily cases the last 7d	128	629
Average 7-day new cases per 100,000	26	20

<sup>1</sup>All data are sourced from <https://coronavirus.iowa.gov/pages/case-counts> with previous days refreshed daily. When recent data are unavailable, data from <https://github.com/nytimes/covid-19-data> may be used. Population of Polk County used is 490,161. Population of Iowa used is 3.155 million. Averages and percent positivity are subject to change with retrospectively refreshed data.

## Critical Points, Media, and Research

- Iowa activity appears to be centered in the most populous counties, in other words is being driven by population density similar to the beginning of the pandemic.
- Polk County activity for the last 7 days has declined, but is showing signs of stabilizing.
- New cases are occurring most often in children and teens averaging 30 new cases per day.
- Hospitalizations are the lowest since September.
- Influenza activity remains extremely low. [CADE - Iowa Flu Reports](#)
- [CDC releases new guidance for schools](#)
  - Same five mitigation efforts are key for safely reopening – masks, distancing, hand hygiene, contact tracing
  - Elementary schools can stay open when community activity is high with strong mitigation strategies
  - Rapid testing of suspected cases and with exposure is recommended
  - New metrics have four response levels centered on percent positivity and cases per 100,000 the previous 7 days. Both metrics are available in this report and on the IDPH website.
- [Respiratory and Psychophysical Sequelae Among Patients With COVID-19 Four Months After Hospital Discharge](#)
- <https://www.kcci.com/article/cdc-director-says-iowa-made-a-mistake-when-lifting-covid-19-mitigation-efforts/35502553#>
- [Genomic epidemiology identifies emergence and rapid transmission of SARS-CoV-2 B.1.1.7 in the United States](#) The full extent of B.1.1.7 circulation may be underestimated, but rapid and comprehensive interventions, including vaccination, physical distancing, and mask wearing, are essential to contain its spread. These data underscore the need for genomic surveillance to monitor dynamics of B.1.1.7 and emerging variants.
- There are almost 1200 variant-related cases. CDC is ramping up testing for variants. [US COVID-19 Cases Caused by Variants | CDC](#)

## Vaccine

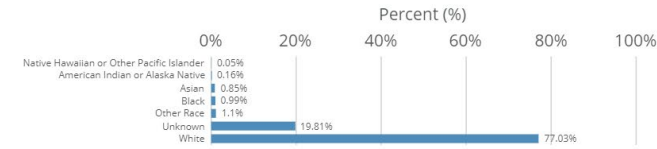
- [Covid-19 Vaccine: Answers to Key Questions](#)
- [Vaccination progress in the US](#)



## Vaccination Progress – Polk County

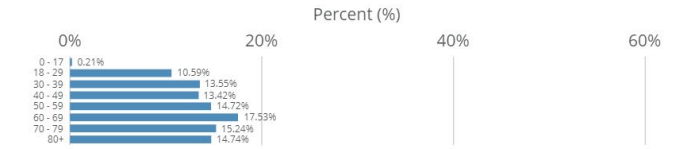
Administration by Race

Doses Administered



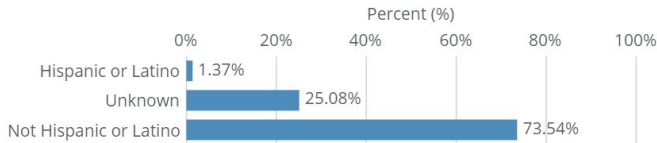
Administration by Age Group

Doses Administered



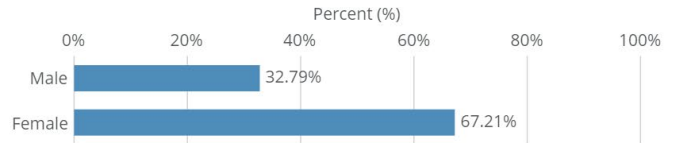
Administration by Ethnicity

Doses Administered



Administration by Sex

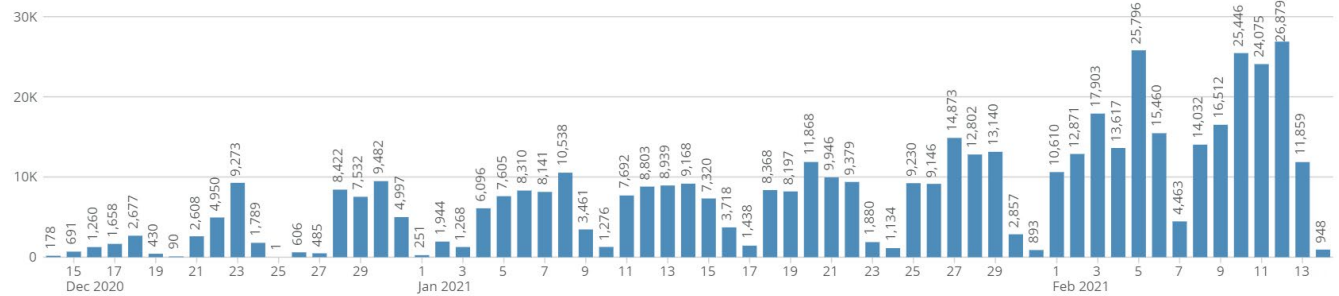
Doses Administered



Vaccine Dose Administration by Day (Includes prime and boost doses)

by Day

Doses Administered



## Vaccination Progress – Iowa

Vaccine Doses Administered by County

County	Series Initiated	Series Completed
Polk	33,881	13,813
<b>Totals</b>	<b>33,881</b>	<b>13,813</b>

Total Doses Administered

487,281

Individuals Initiating Vaccination (1st Dose)

241,019

Doses Administered to Iowa Residents

467,798

Individuals Completing Vaccination (2nd Dose)

123,131

Doses Administered by Manufacturer

Vaccine Manufacturer	Doses
Moderna	41,007
Pfizer	46,345
<b>Total</b>	<b>87,352</b>

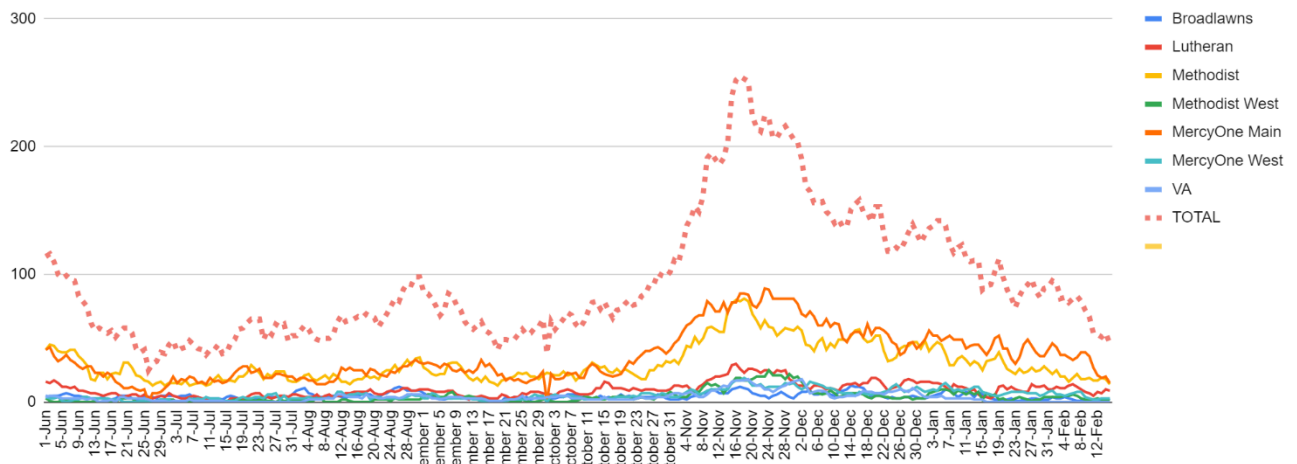


### School Statistics – Polk County (Updated per week on Mondays)

Rate of Student/Staff Cases Per 1,000														
Week Ending	1-Nov	8-Nov	15-Nov	22-Nov	29-Nov	13-Dec	20-Dec	27-Dec	10-Jan	17-Jan	24-Jan	31-Jan	7-Feb	14-Feb
DMPS	0.2	4.0	0.5	0.5	0.2	0.7	0.7	0.4	4.0	1.9	2.6	0.2	2.5	0.8
Ankeny	3.8	3.8	4.3	4.3	4.5	3.3	1.9	1.8	5.9	3.8	3.1	2.8	2.3	1.6
Waukee	5.8	10.3	9.4	6.5	4.6	3.5	1.7	1.7	4.5	5.0	2.4	3.3	3.0	3.0
WDM	2.8	5.7	11.0	4.7	1.1	2.7	1.9	0.6	4.0	4.2	1.6	2.2	1.6	2.4
Johnston	6.3	8.3	10.4	7.1	5.4	2.3	1.7	0.3	4.6	3.4	2.1	3.3	2.3	1.6
SE Polk	4.7	5.0	8.3	7.9	7.7	3.0	4.6	2.7	3.4	5.0	3.9	2.9	3.4	3.0
Urbandale	1.8	2.0	10.8	8.5	5.8	3.5	3.5	2.0	6.0	3.0	2.5	2.8	3.3	4.0
DCG		6.0	10.4	9.5	13.3	4.7	0.9	2.8	2.2	2.2	2.5	1.3	1.3	1.9
Bondurant		8.3	7.9	13.4	13.4	3.7	2.8	7.4	0.0		0.9	12.5	19.0	11.6
North Polk		4.5	5.6	5.6	4.5	1.1	1.7	2.3	3.9	1.1	7.9	5.6	10.1	1.7
Ballard		0.0	0.0	8.2	0.6	1.2	1.2	0.0	0.0	4.1	1.2	1.2	6.4	6.4
Saydel		7.5	12.7	3.0	0.0	2.2	3.0	2.2	3.7	3.7	3.7	0.7	1.5	3.0

Students/Staff in Quarantine														
Week Ending	1-Nov	8-Nov	15-Nov	22-Nov	29-Nov	13-Dec	20-Dec	27-Dec	10-Jan	17-Jan	24-Jan	31-Jan	7-Feb	7-Feb
DMPS	N/A	N/A	N/A	N/A	N/A	N/A	N/A	N/A	N/A	N/A	N/A	N/A	N/A	220
Ankeny	225	225	370	370	273	172	107	87	132	116	125	138	178	106
Waukee	332	500	575	384	160	76	113	136	156	195	95	108	127	128
WDM	146	204	239	70	12	38	19	14	114	55	54	83	69	39
Johnston	586	667	527	318	286	73	78	73	116	147	126	109	100	106
SE Polk	186	211	307	380	401	126	121	129	89	125	129	96	84	86
Urbandale	39	97	180	223	179	49	32	34	43	71	78	50	67	77
DCG		80	159	216	82	69	46	41	33	43	42	44	45	59
Bondurant		148	160	167	138	97	55	62	<6	N/A	28	68	86	69
North Polk		103	101	90	61	55	51	46	30	19	35	57	52	50
Ballard				77	40	34	16		28	12	25	20	18	40
Saydel		109	88	65	46	30	33	24	39	26	27	26	33	19
Total	1514	2344	2706	2360	1678	819	671	646	780	809	764	799	1079	977

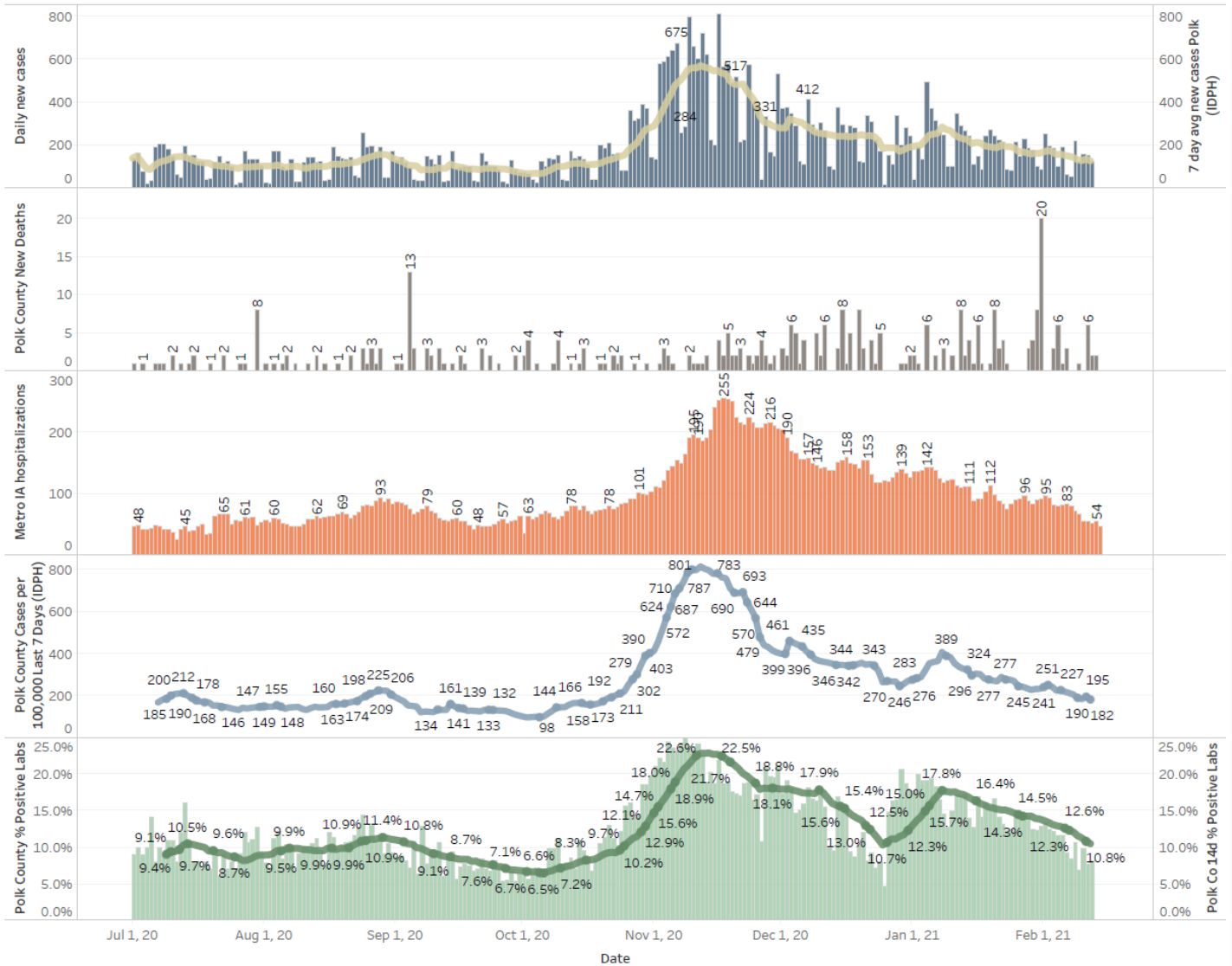
Metro Hospitalizations by Hospital and Total, YTD



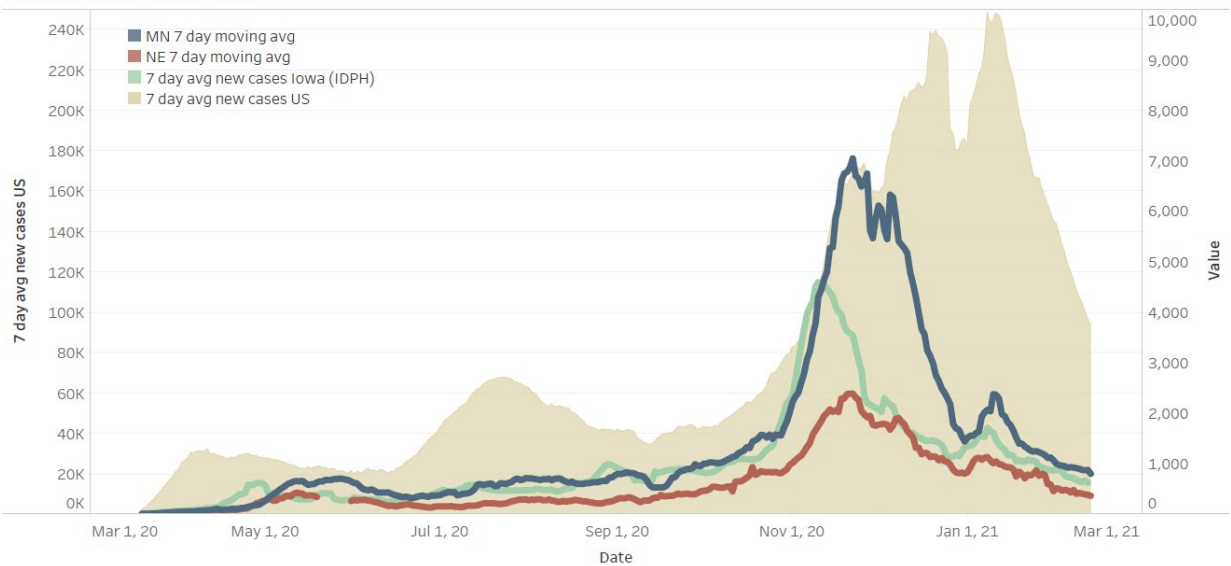
# Central Iowa COVID19 Update



## Polk County Activity View



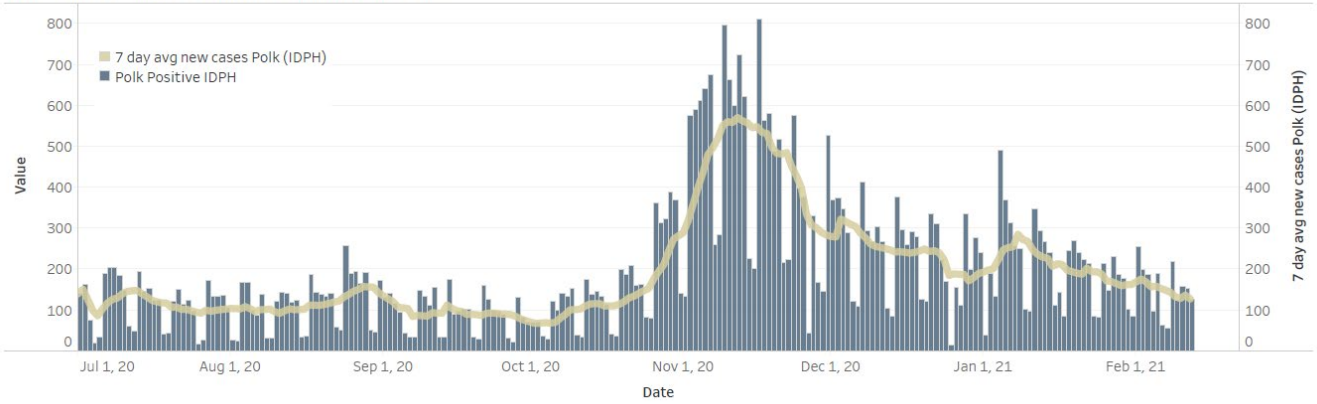
## US and Border State Cases



# Central Iowa COVID19 Update



### Polk County Cases by Day and 7d Moving Average



### Iowa Cases by Day and 7d Moving Average

