



Central Iowa COVID19 Update

Wednesday, February 3, 2021



Statistical Consulting

Dr. Meg Schaeffer





Quick Stats¹

	Polk County	Iowa
7d Lab Test Positivity	9.9%	7.7%
14d Lab Test Positivity	11.6%	9.5%
Total cases per 100,000 the last 7d	231	186
Total cases per 100,000 the last 14d	499	415
Average daily cases the last 7d	154	833
Average 7-day new cases per 100,000	31	26

¹All data are sourced from <https://coronavirus.iowa.gov/pages/case-counts> with previous days refreshed daily. When recent data are unavailable, data from <https://github.com/nytimes/covid-19-data> may be used. Population of Polk County used is 490,161. Population of Iowa used is 3.155 million. Averages and percent positivity are subject to change with retrospectively refreshed data.

Critical Points, Media, and Research

- Iowa still has three cases of the UK variant; two in Johnson and one in Bremer County.
- Polk County cases are decreasing, though hospitalizations remain stable.
- Influenza activity remains extremely low. [CADE - Iowa Flu Reports](#)
- Schools can reopen safely when masks are used with social distancing and ventilating rooms. [Covid: CDC director says schools can safely reopen without vaccinating teachers \(cnbc.com\)](#)
- [CDC director says to watch Super Bowl virtually or only with people you already live with \(cnbc.com\)](#)
- New variant presents re-infection risk. [SARS-CoV-2 501Y.V2 escapes neutralization by South African COVID-19 donor plasma | bioRxiv](#)
- Demonstration of antibody persistence. [Evolution of antibody immunity to SARS-CoV-2 | Nature](#)
- Within households, children and adolescents were less susceptible to SARS-CoV-2 infection but were more infectious than older individuals. Presymptomatic cases were more infectious and individuals with asymptomatic infection less infectious than symptomatic cases. Household secondary attack rates were 16%. [Household transmission of SARS-CoV-2 and risk factors for susceptibility and infectivity in Wuhan: a retrospective observational study - The Lancet Infectious Diseases](#)
- Support for modified quarantine protocols with testing at day five and release on day seven with negative test. [Quarantine and testing strategies in contact tracing for SARS-CoV-2: a modelling study - The Lancet Public Health](#)

Vaccine

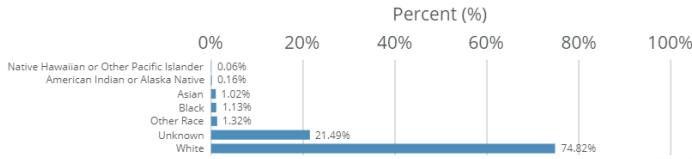
- B.1.351 (South African) variant found in South Carolina and Maryland. The Brazil variant was identified in MN. [US COVID-19 Cases Caused by Variants | CDC](#)
- Trials data shows 75% efficacy, but a lower response to the South African variant. [Johnson & Johnson's Vaccine Offers Strong Protection but Fuels Concern About Variants - The New York Times \(nytimes.com\)](#)
- An excellent resource on the COVID vaccine. [Covid-19 Vaccine: Answers to Key Questions - The New York Times \(nytimes.com\)](#)
- The rate of anaphylaxis is 11.1 per million doses with 71% of reactions occurring within 15 minutes of administration. [Allergic Reactions Including Anaphylaxis After Receipt of the First Dose of Pfizer-BioNTech COVID-19 Vaccine — United States, December 14–23, 2020 | MMWR \(cdc.gov\)](#)
- Vaccination progress in the US. [CDC COVID Data Tracker](#)
- Vaccine development tracker. <https://www.nytimes.com/interactive/2020/science/coronavirus-vaccine-tracker.html>



Vaccination Progress – Polk County

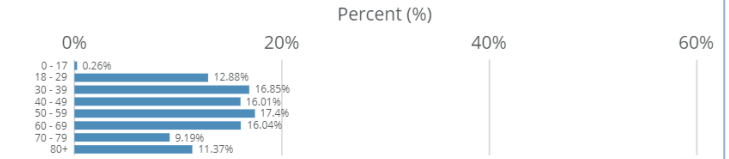
Administration by Race

Doses Administered



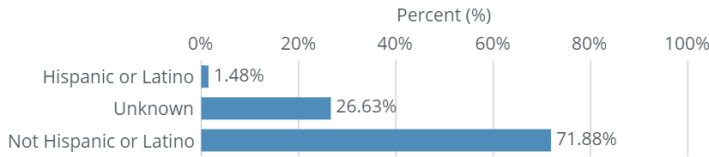
Administration by Age Group

Doses Administered



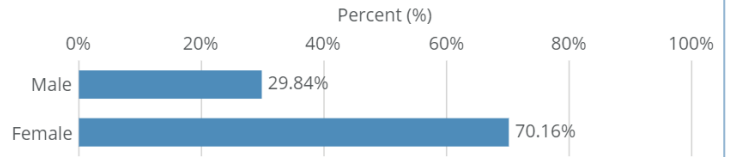
Administration by Ethnicity

Doses Administered



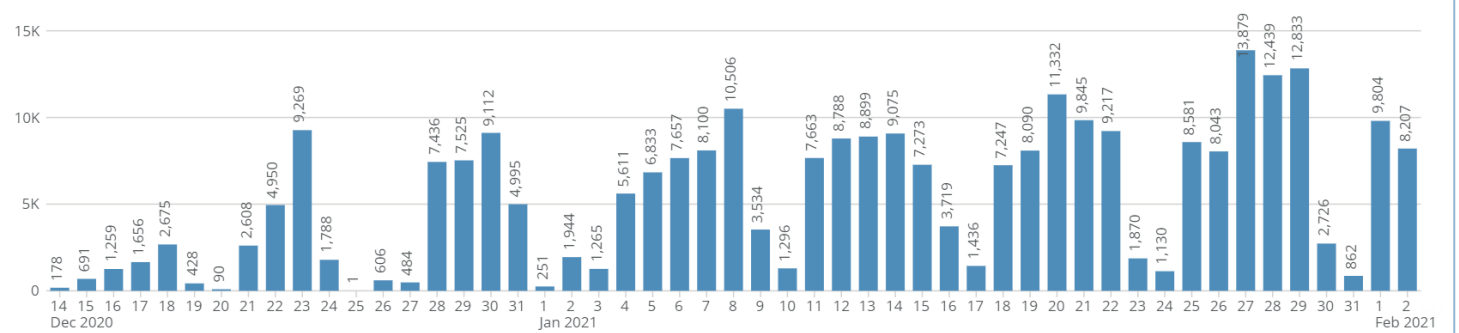
Administration by Sex

Doses Administered



Vaccine Dose Administration by Day (Includes prime and boost doses)

Doses Administered



Vaccination Progress – Iowa

Total Doses Administered

275,706

Individuals Initiating Vaccination (1st Dose)

137,242

Doses Administered to Iowa Residents

262,719

Individuals Completing Vaccination (2nd Dose)

69,232

Doses Administered by Manufacturer

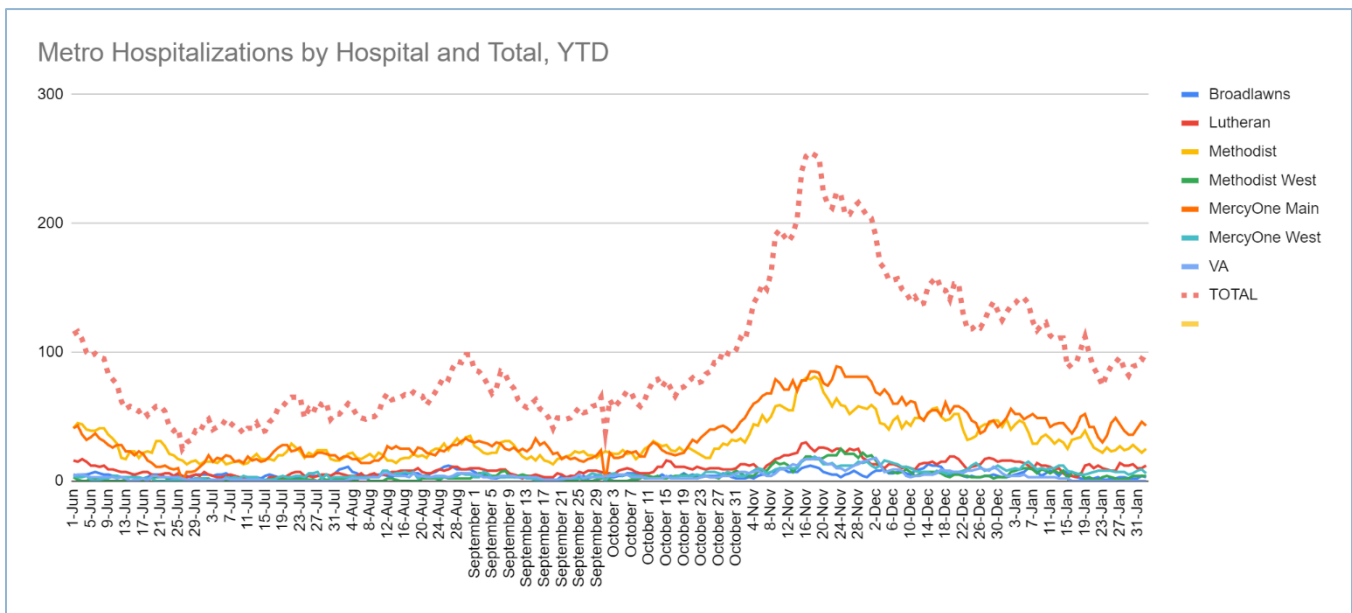
Vaccine Manufacturer	Doses
Moderna	154,163
Pfizer	121,543
Total	275,706



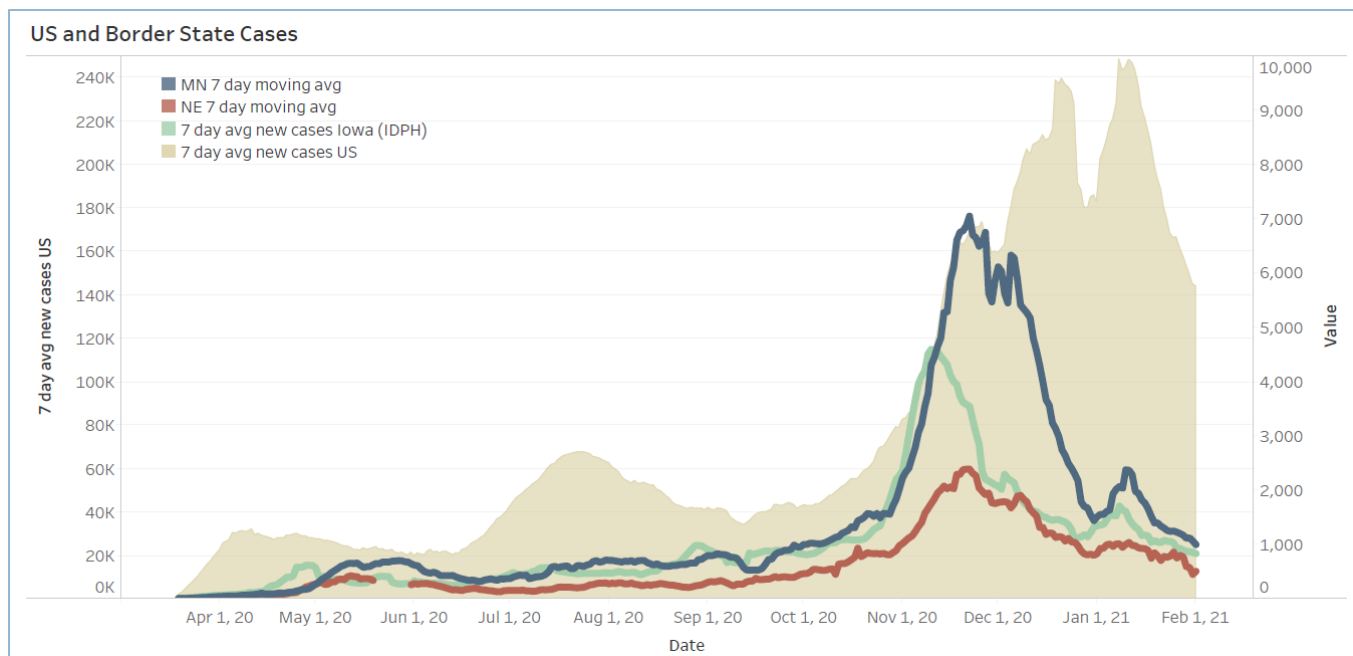
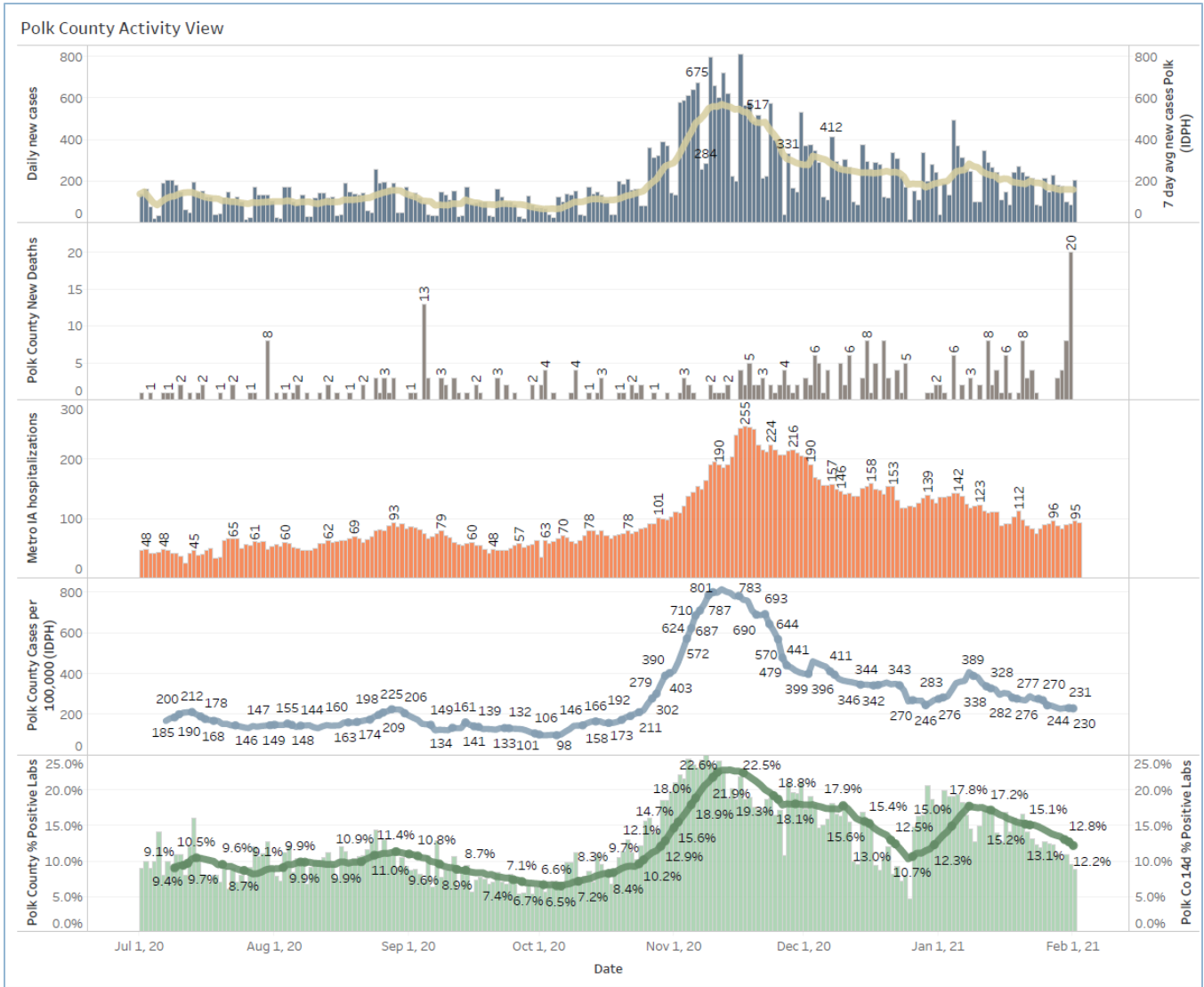
School Statistics – Polk County (Updated per week on Mondays)

Rate of Student/Staff Cases Per 1,000												
Week Ending	1-Nov	8-Nov	15-Nov	22-Nov	29-Nov	13-Dec	20-Dec	27-Dec	10-Jan	17-Jan	24-Jan	31-Jan
DMPs*	0.2	4.0	0.5	0.5	0.2	0.7	0.7	0.4	4.0	1.9	2.6	0.2
Ankeny	3.8	3.8	4.3	4.3	4.5	3.3	1.9	1.8	5.9	3.8	3.1	2.8
Waukee	5.8	10.3	9.4	6.5	4.6	3.5	1.7	1.7	4.5	5.0	2.4	3.3
WDM	2.8	5.7	11.0	4.7	1.1	2.7	1.9	0.6	4.0	4.2	1.6	2.2
Johnston	6.3	8.3	10.4	7.1	5.4	2.3	1.7	0.3	4.6	3.4	2.1	3.3
SE Polk	4.7	5.0	8.3	7.9	7.7	3.0	4.6	2.7	3.4	5.0	3.9	2.9
Urbandale	1.8	2.0	10.8	8.5	5.8	3.5	3.5	2.0	6.0	3.0	2.5	2.8
DCG		6.0	10.4	9.5	13.3	4.7	0.9	2.8	2.2	2.2	2.5	1.3
Bondurant		8.3	7.9	13.4	13.4	3.7	2.8	7.4	0.0		0.9	12.5
North Polk		4.5	5.6	5.6	4.5	1.1	1.7	2.3	3.9	1.1	7.9	5.6
Ballard		0.0	0.0	8.2	0.6	1.2	1.2	0.0	0.0	4.1	1.2	1.2
Saydel		7.5	12.7	3.0	0.0	2.2	3.0	2.2	3.7	3.7	3.7	0.7

Students/Staff in Quarantine												
Week Ending	1-Nov	8-Nov	15-Nov	22-Nov	29-Nov	13-Dec	20-Dec	27-Dec	10-Jan	17-Jan	24-Jan	31-Jan
DMPs*	N/A	N/A	N/A	N/A	N/A	N/A	N/A	N/A	N/A	N/A	N/A	N/A
Ankeny	225	225	370	370	273	172	107	87	132	116	125	138
Waukee	332	500	575	384	160	76	113	136	156	195	95	108
WDM	146	204	239	70	12	38	19	14	114	55	54	83
Johnston	586	667	527	318	286	73	78	73	116	147	126	109
SE Polk	186	211	307	380	401	126	121	129	89	125	129	96
Urbandale	39	97	180	223	179	49	32	34	43	71	78	50
DCG		80	159	216	82	69	46	41	33	43	42	44
Bondurant		148	160	167	138	97	55	62	<6	N/A	28	68
North Polk		103	101	90	61	55	51	46	30	19	35	57
Ballard				77	40	34	16		28	12	25	20
Saydel		109	88	65	46	30	33	24	39	26	27	26
Total	1514	2344	2706	2360	1678	819	671	646	780	809	764	799



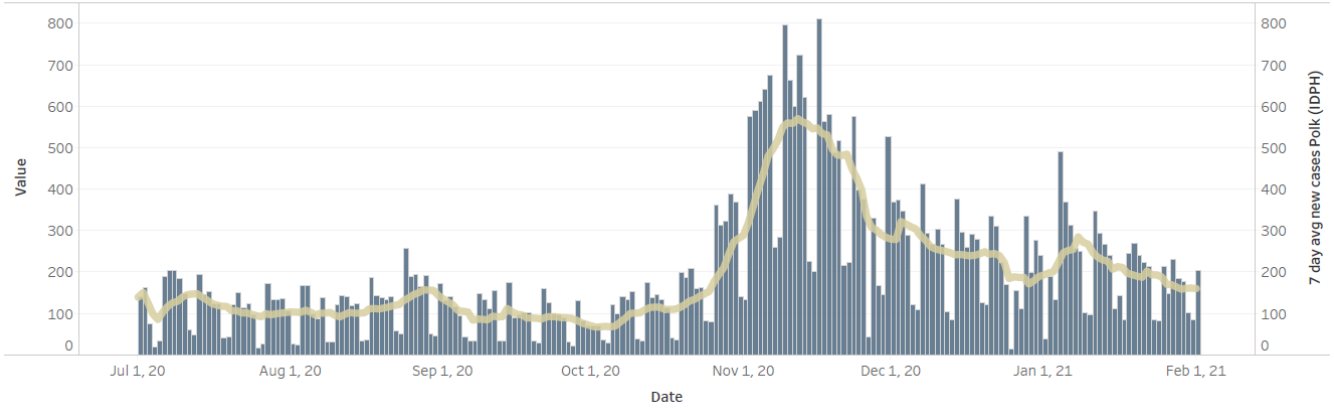
Central Iowa COVID19 Update



Central Iowa COVID19 Update



Polk County Cases by Day and 7d Moving Average



Iowa Cases by Day and 7d Moving Average

