



# Daily Operations Briefing

---

September 1, 2020

0800 Hours



---

*Our success is measured by how well we help others succeed.*

# Welcome – Planning Section Chief

---



## 1. Welcome & Role Call

## 2. Expected Outcomes

- A. Information exchange
- B. Identify priorities, concerns, needs and solutions
- C. Determine the need for a Stakeholder Briefing

## 3. Ground Rules

- A. Cell phones and radios off/silent
- B. Minimize side-bar conversations
- C. Stick to the agenda

*Welcome!*



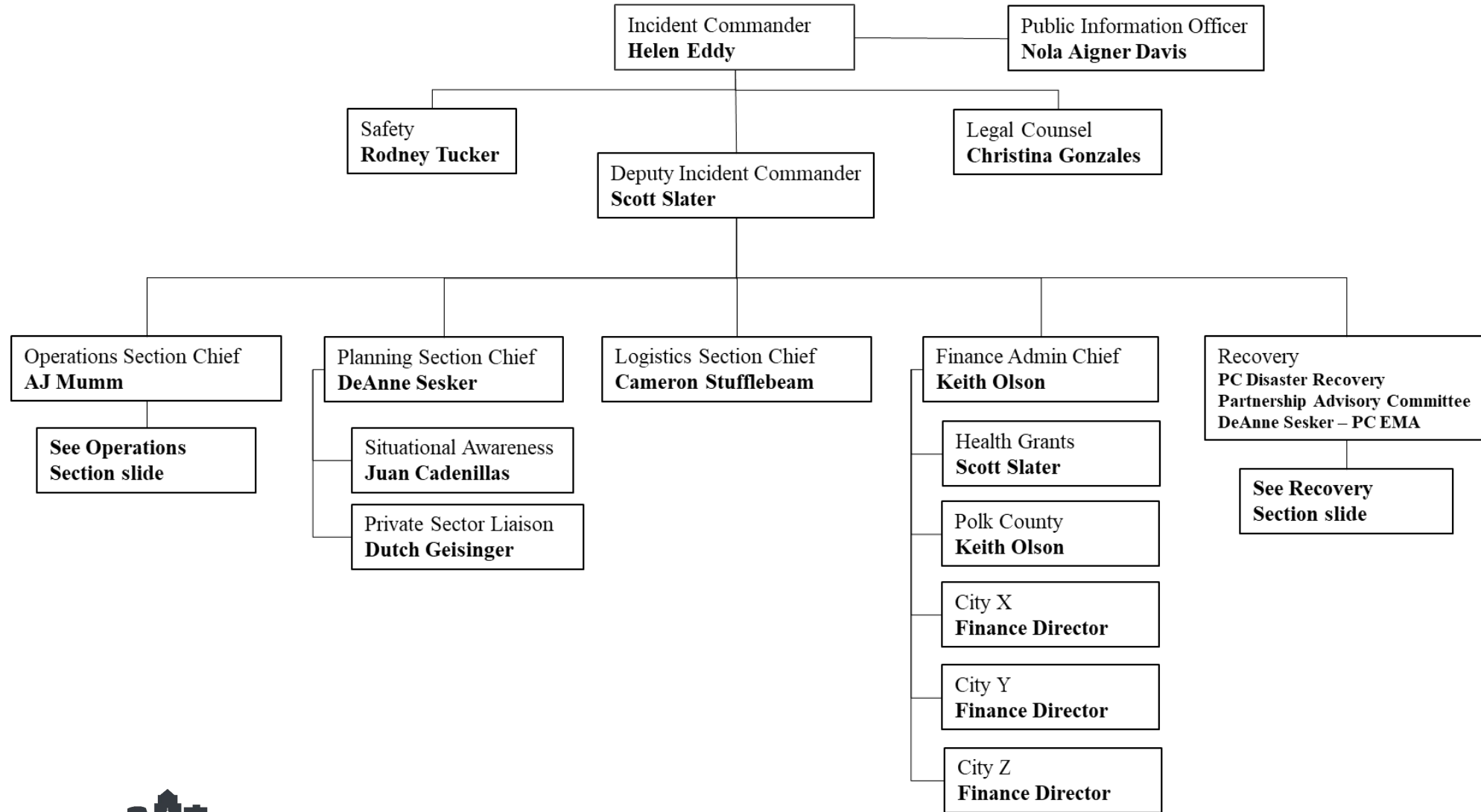
# Opening Comments

---

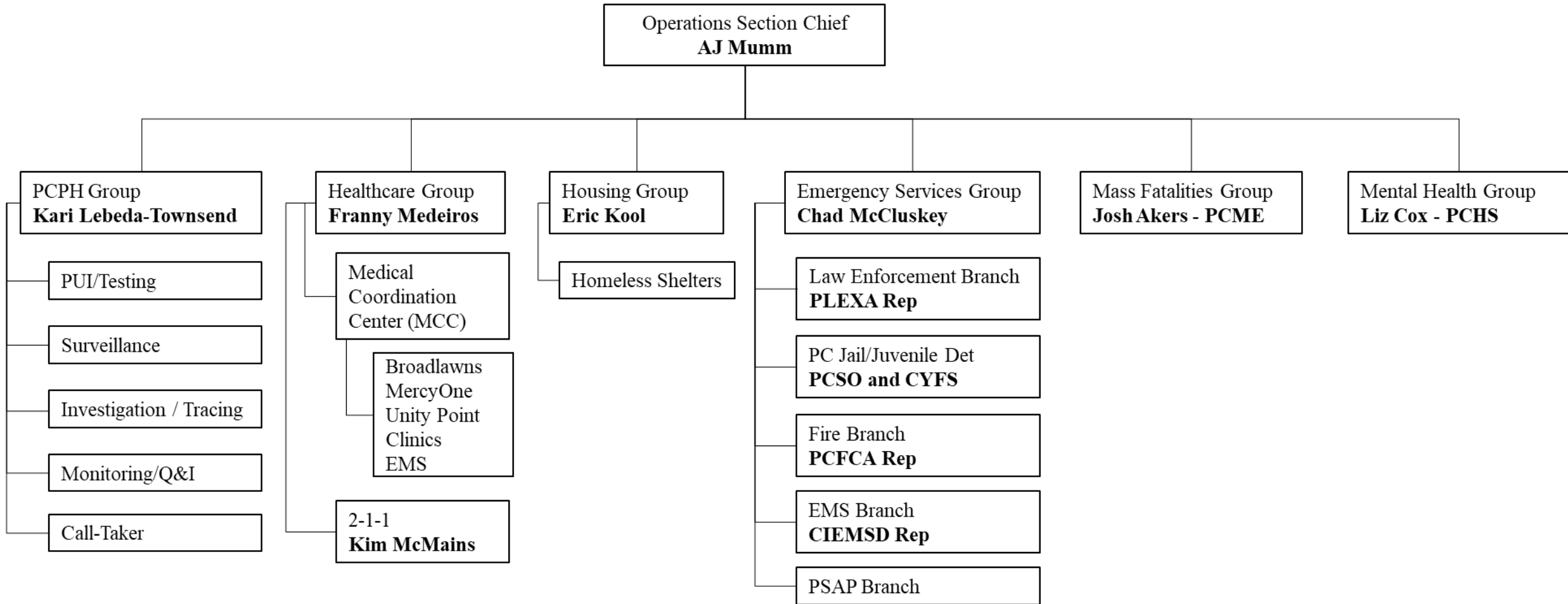
**Helen Eddy – Incident Commander**

**Polk County Public Health Director**

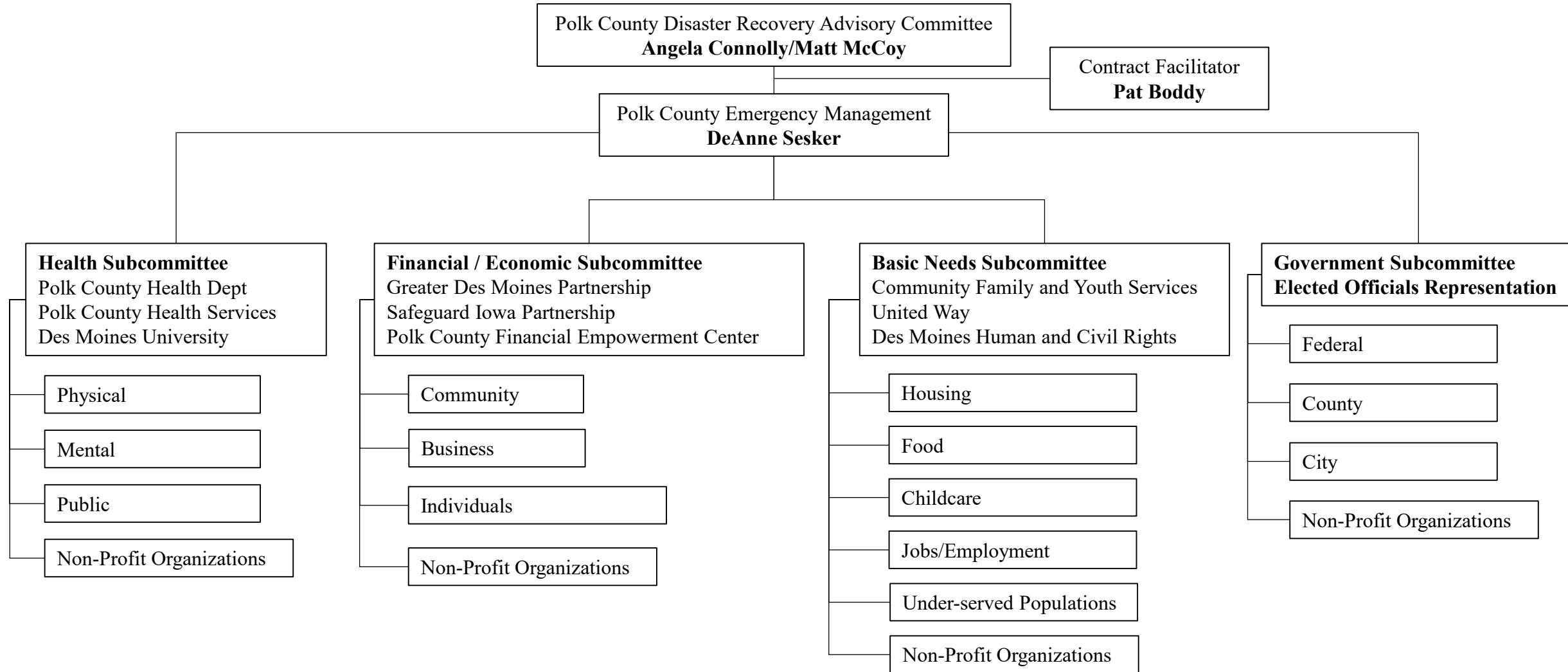
# CORONAVIRUS COVID-19 ORGANIZATIONAL CHART (07/27/20)



# Operations Section (07/27/20)



# Recovery Section (07/27/20)

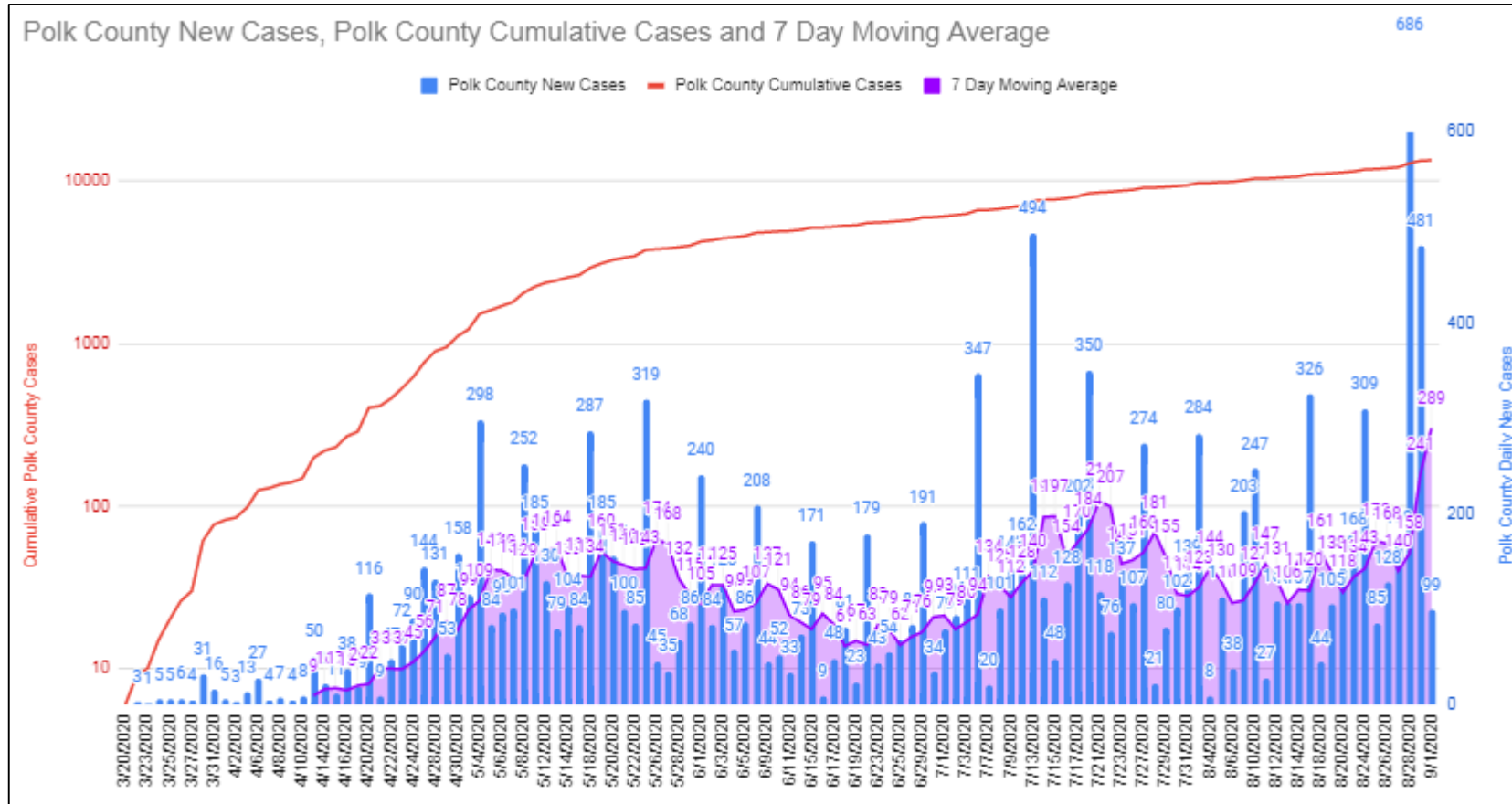


# Cases per 100,000 Population



County	Positive Cases	Cases Per 100,000 Population
Buena Vista	1,826	9,188
Crawford	836	4,872
Marshall	1,647	4,119
Wright	520	4,098
Woodbury	4,148	4,045
Tama	623	3,686
Louisa	396	3,546
Wapello	1,087	3,088
Plymouth	745	2,969
Franklin	295	2,914
Black Hawk	3,802	2,871
Webster	1,032	2,845
Polk	13,415	2,753
Dallas	2,383	2,642
Johnson	3,978	2,630
Sioux	899	2,575
Clarke	241	2,558
Story	2,454	2,501
Dickinson	424	2,472

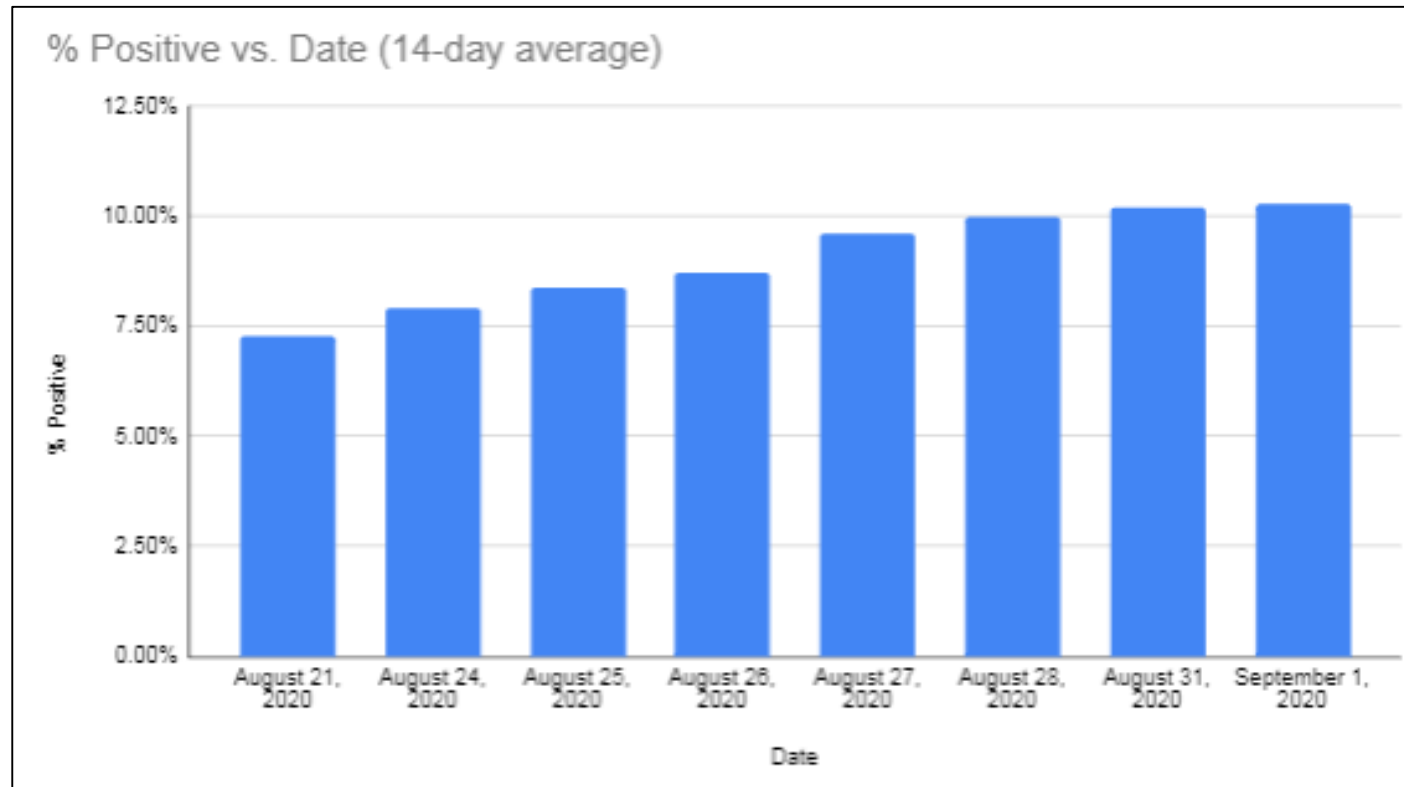
# Polk County Cases



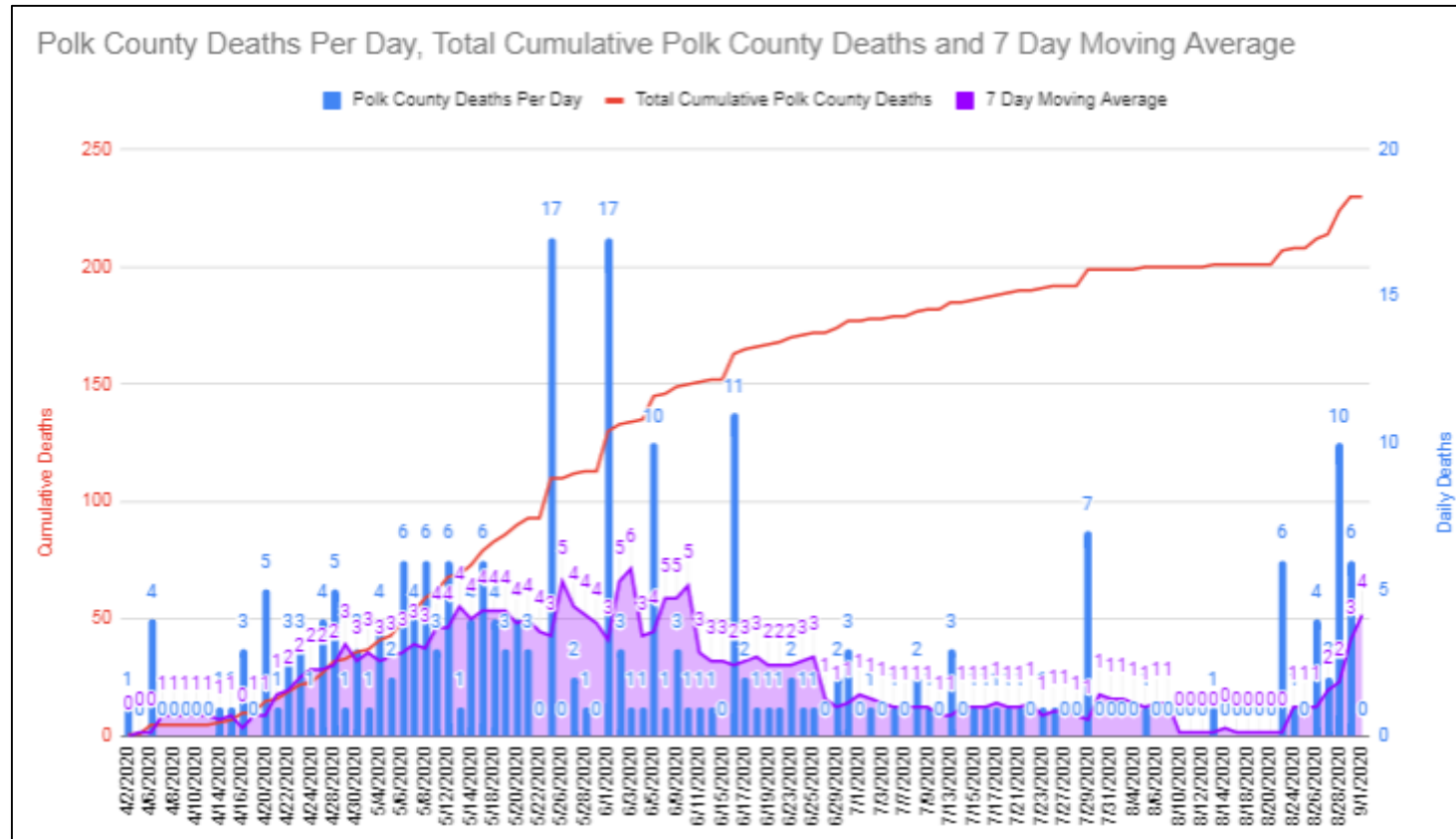
COVID-19 Cases in Polk County	
Confirmed	13,415 (+1,563 since Tuesday)
Deaths	208 (+22 since Tuesday)



# Polk Percent Tested Positive – 14 day average



# Polk County Deaths



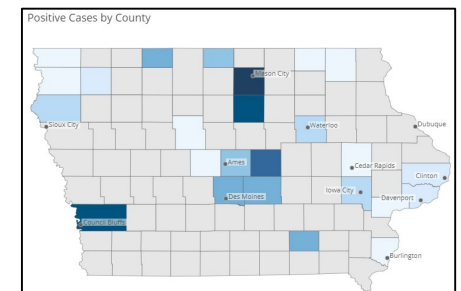
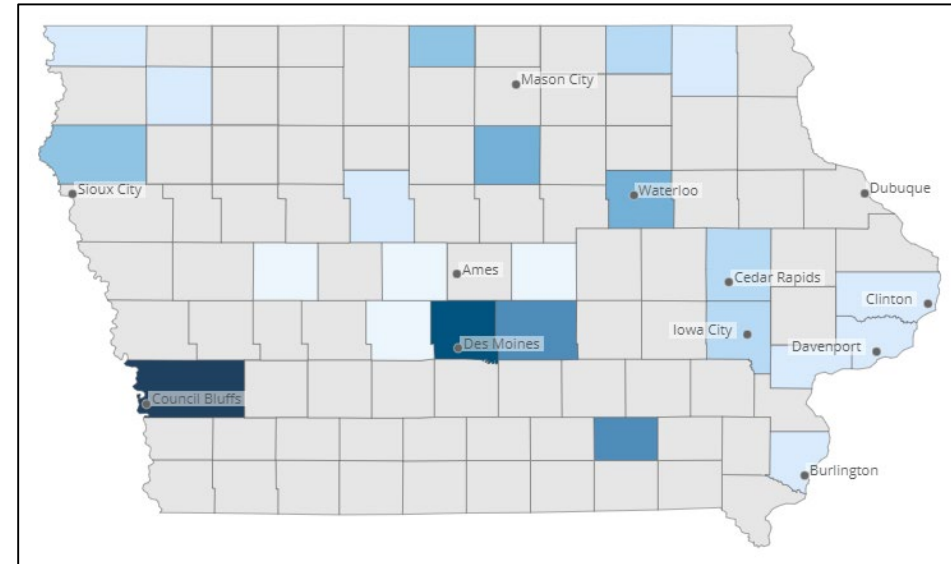
# Congregate Living Cases and Outbreaks



## Polk County Facilities Impacted

Total Facilities Impacted (cumulative)	93 (0)
Facilities Currently Monitored	39 (-3)
<ul style="list-style-type: none"> <li>Facilities with cases; no outbreak</li> </ul>	20 (-1)
<ul style="list-style-type: none"> <li>Facilities with a confirmed outbreak*</li> </ul>	19 (0)

\*outbreak = 3 or more confirmed cases

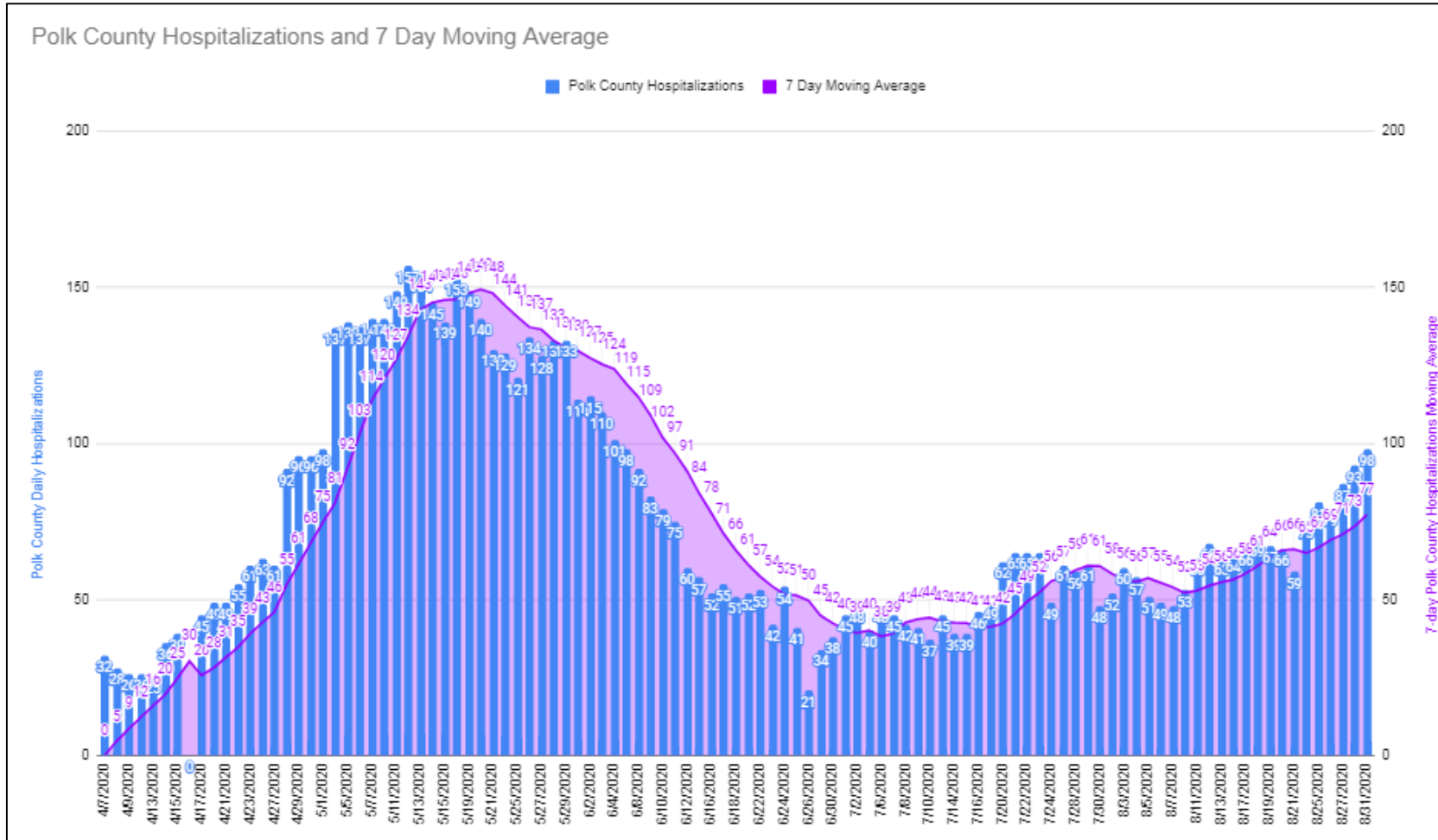


# Polk County Schools



*Our success is measured by how well we help others succeed.*

# Metro Hospital Status Report



# Group Supervisors

---



- Updates
- Current priorities
- Strategies to address
- Implementation of strategies
- Challenges/solutions

# Remobilization Triggers



Section/Group	Trigger
Logistics Section	When 2 or more Priority 1 entities are requesting PPE
Planning Section	When 2-3 of the Remobilization Triggers are met, EOC staffing and planning meeting needs will be assessed
PH Group	<ol style="list-style-type: none"><li>1. If/when PCPH will resume contact tracing from IDPH</li><li>2. Surge in cases LTCF, daycare/childcare, school or business in two or more settings</li></ol>
Healthcare Group	1 or more hospitals/EMS services asking for resources or raising concern on a daily basis
Housing Group	Homeless shelter outbreak (residents and/or staff) ~20 - 30

# Q&A





# Closing Comments

---

Adjourn