



Central Iowa COVID19 Update

Monday, January 18, 2021



Aperio

Statistical Consulting

Dr. Meg Schaeffer





Quick Stats¹

	Polk County	Iowa
7d Lab Test Positivity	12.2%	9.4%
14d Lab Test Positivity	14.4%	13%
Total cases per 100,000 the last 7d	284	242
Total cases per 100,000 the last 14d	672	603
Average daily cases the last 7d	198	1092
Average 7-day new cases per 100,000	40	35

¹All data are sourced from <https://coronavirus.iowa.gov/pages/case-counts> with previous days refreshed daily. When recent data are unavailable, data from <https://github.com/nytimes/covid-19-data> may be used. Population of Polk County used is 490,161. Population of Iowa used is 3.155 million. Averages and percent positivity are subject to change with retrospectively refreshed data.

Critical Points, Media, and Research

- Polk County and state cases are stable following a brief, post-holiday surge. The national trend is wavering, and forecast mixed.
- Influenza activity remains extremely low. <https://idph.iowa.gov/influenza/reports>
- The UK variant B.1.1.7 is in MN, WI, and IL, among more than a dozen other states. <https://www.cdc.gov/coronavirus/2019-ncov/transmission/variant-cases.html>
- A study in JAMA asserts 50% of COVID-19 cases are transmitted by asymptomatic, infectious people highlighting the need for expanded testing to identify asymptomatic cases. <https://jamanetwork.com/journals/jamanetworkopen/fullarticle/2774707>
- A legislator at the State House tested positive for COVID-19. <https://www.kcci.com/article/legislators-say-individual-in-statehouse-tested-positive-for-covid-19/35232347#>
- Pay attention to the people you know to reduce individual risk. <https://www.statnews.com/2021/01/18/staying-safe-covid-19-era-pay-attention-to-the-guy-you-know/>
- Young adults may have cognitive challenges in COVID-19 recovery. <https://academic.oup.com/braincomms/article/2/2/fcaa205/5998660>
- CDC Library: [COVID-19 Science Update: 12/22/2020](https://www.cdc.gov/media/releases/2020/s122220-covid-science-update.html)

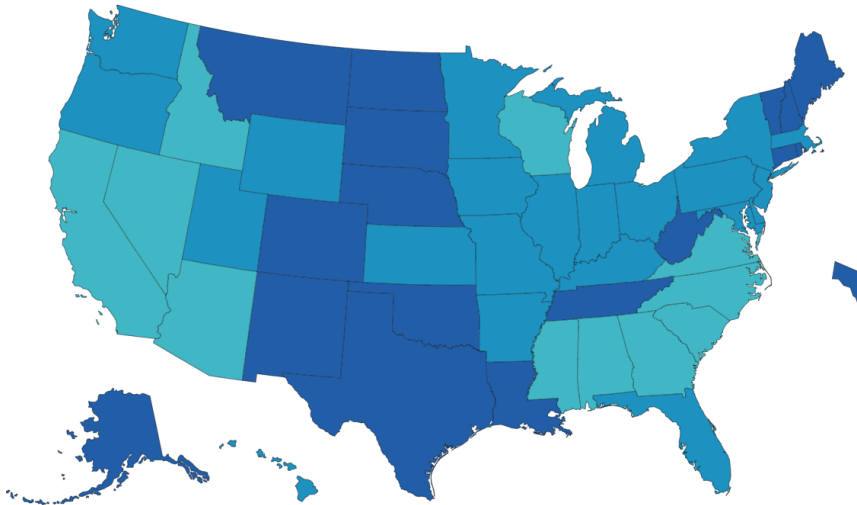
Vaccine

- In Iowa, 142k doses of vaccine were administered, averaging 4,194 (vaccination started on 12/14). At this rate, it will take almost three years to reach herd immunity percentage estimated at 70.
- Flexible dosing strategies compared to strict (reserving half of initial doses for second doses), as per the majority of US plans, could prevent at least 24% of cases occurring within the vaccination period. <https://www.acpjournals.org/doi/10.7326/m20-8137>
- Johnson and Johnson will release the results of its clinical trial in about two weeks. Production is behind, but the vaccine is only a single dose. <https://www.nytimes.com/interactive/2020/science/coronavirus-vaccine-tracker.html#jnj>
- Vaccination progress in Iowa. <https://idph.iowa.gov/Portals/1/userfiles/61/COVID19%20Vaccine%20Administration.pdf>
- Vaccination progress in the US. [CDC COVID Data Tracker](https://www.cdc.gov/covid19/data-tracker/)
- Vaccine development tracker. <https://www.nytimes.com/interactive/2020/science/coronavirus-vaccine-tracker.html>

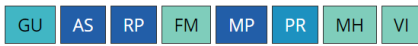


Vaccination Progress

Total Doses Administered Reported to the CDC by State/Territory and for Selected Federal Entities per 100,000



Territories



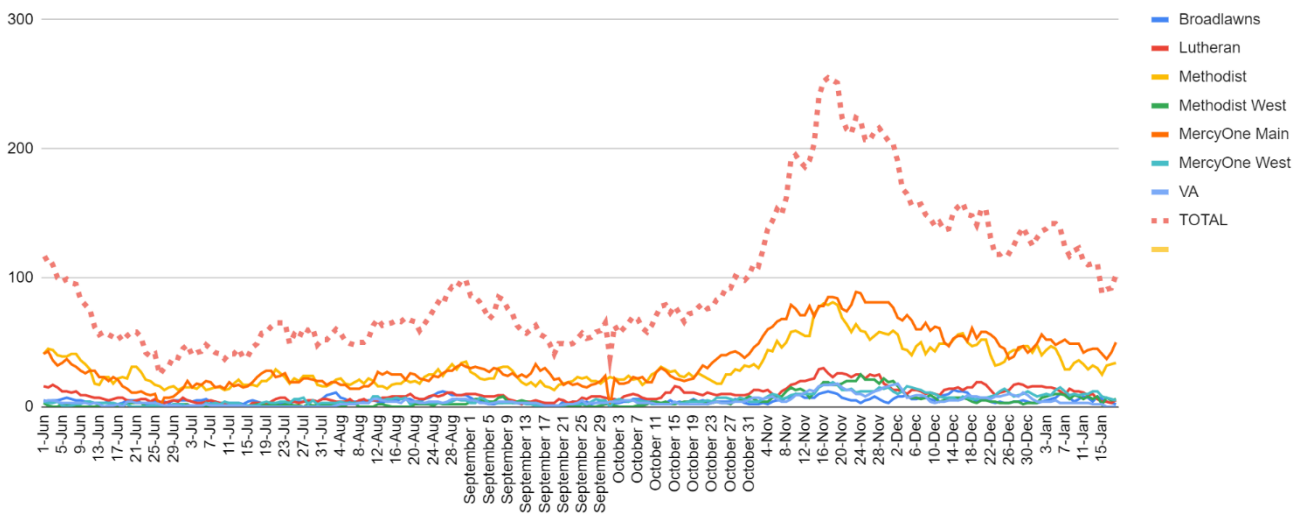
Federal Entities



Total Doses Administered per 100,000



Metro Hospitalizations by Hospital and Total, YTD



Central Iowa COVID19 Update



School Statistics – Polk County

Rate of Student/Staff Cases Per 1,000										
Week Ending	1-Nov	8-Nov	15-Nov	22-Nov	29-Nov	13-Dec	20-Dec	27-Dec	10-Jan	17-Jan
DMPS*	0.2	4.0	0.5	0.5	0.2	0.7	0.7	0.4	4.0	1.9
Ankeny	3.8	3.8	4.3	4.3	4.5	3.3	1.9	1.8	5.9	3.8
Waukee	5.8	10.3	9.4	6.5	4.6	3.5	1.7	1.7	4.5	5.0
WDM	2.8	5.7	11.0	4.7	1.1	2.7	1.9	0.6	4.0	4.2
Johnston	6.3	8.3	10.4	7.1	5.4	2.3	1.7	0.3	4.6	3.4
SE Polk	4.7	5.0	8.3	7.9	7.7	3.0	4.6	2.7	3.4	5.0
Urbandale	1.8	2.0	10.8	8.5	5.8	3.5	3.5	2.0	6.0	3.0
DCG		6.0	10.4	9.5	13.3	4.7	0.9	2.8	2.2	2.2
Bondurant		8.3	7.9	13.4	13.4	3.7	2.8	7.4	0.0	
North Polk		4.5	5.6	5.6	4.5	1.1	1.7	2.3	3.9	1.1
Ballard		0.0	0.0	8.2	0.6	1.2	1.2	0.0	0.0	4.1
Saydel		7.5	12.7	3.0	0.0	2.2	3.0	2.2	3.7	3.7

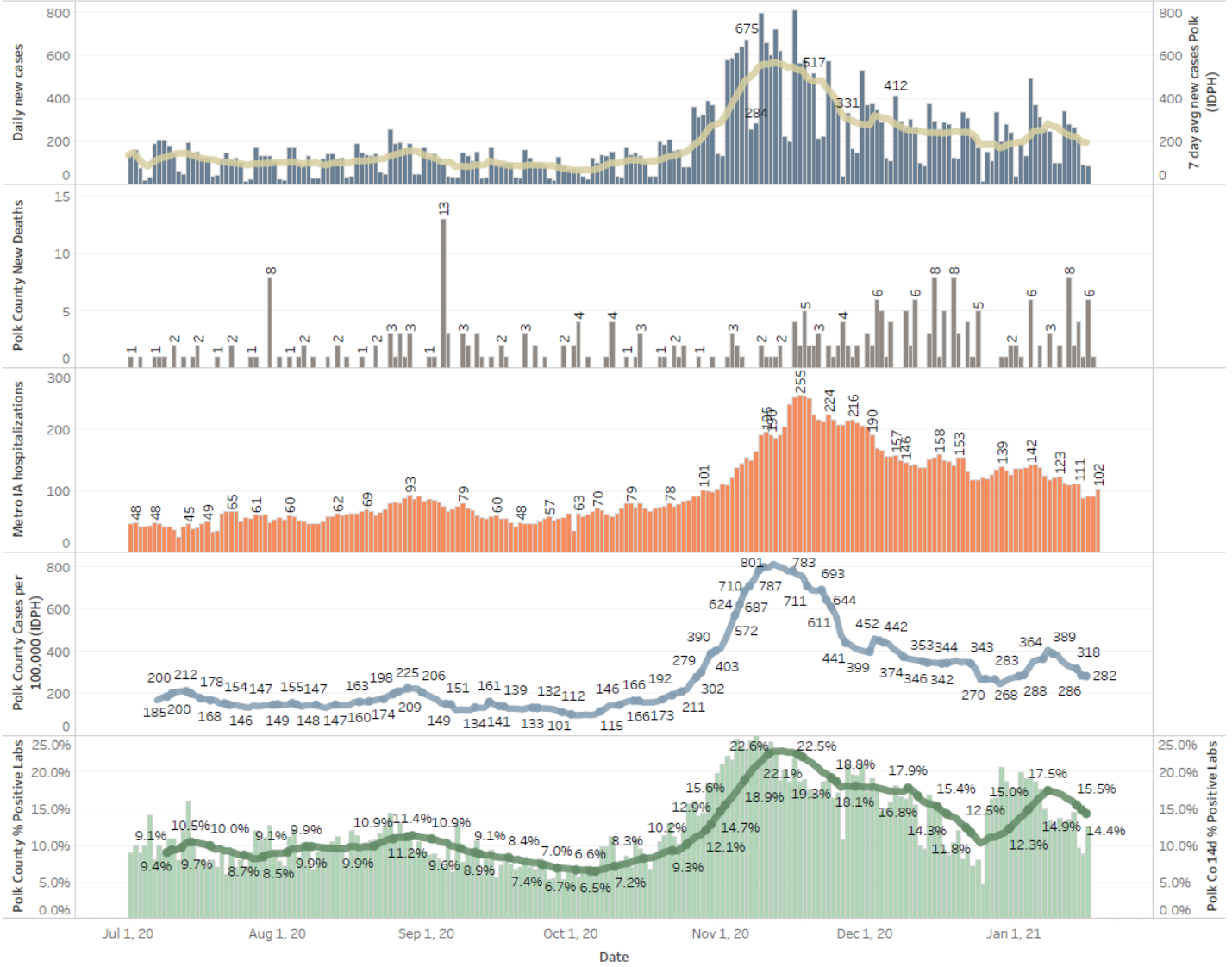
Students/Staff in Quarantine										
Week Ending	1-Nov	8-Nov	15-Nov	22-Nov	29-Nov	13-Dec	20-Dec	27-Dec	10-Jan	17-Jan
DMPS*	N/A	N/A	N/A	N/A	N/A	N/A	N/A	N/A	N/A	N/A
Ankeny	225	225	370	370	273	172	107	87	132	116
Waukee	332	500	575	384	160	76	113	136	156	195
WDM	146	204	239	70	12	38	19	14	114	55
Johnston	586	667	527	318	286	73	78	73	116	147
SE Polk	186	211	307	380	401	126	121	129	89	125
Urbandale	39	97	180	223	179	49	32	34	43	71
DCG		80	159	216	82	69	46	41	33	43
Bondurant		148	160	167	138	97	55	62	<6	N/A
North Polk		103	101	90	61	55	51	46	30	19
Ballard				77	40	34	16		28	12
Saydel		109	88	65	46	30	33	24	39	26
Total	1514	2344	2706	2360	1678	819	671	646	780	809

*DMPS does not report quarantined students; DMPS also reports cases only daily

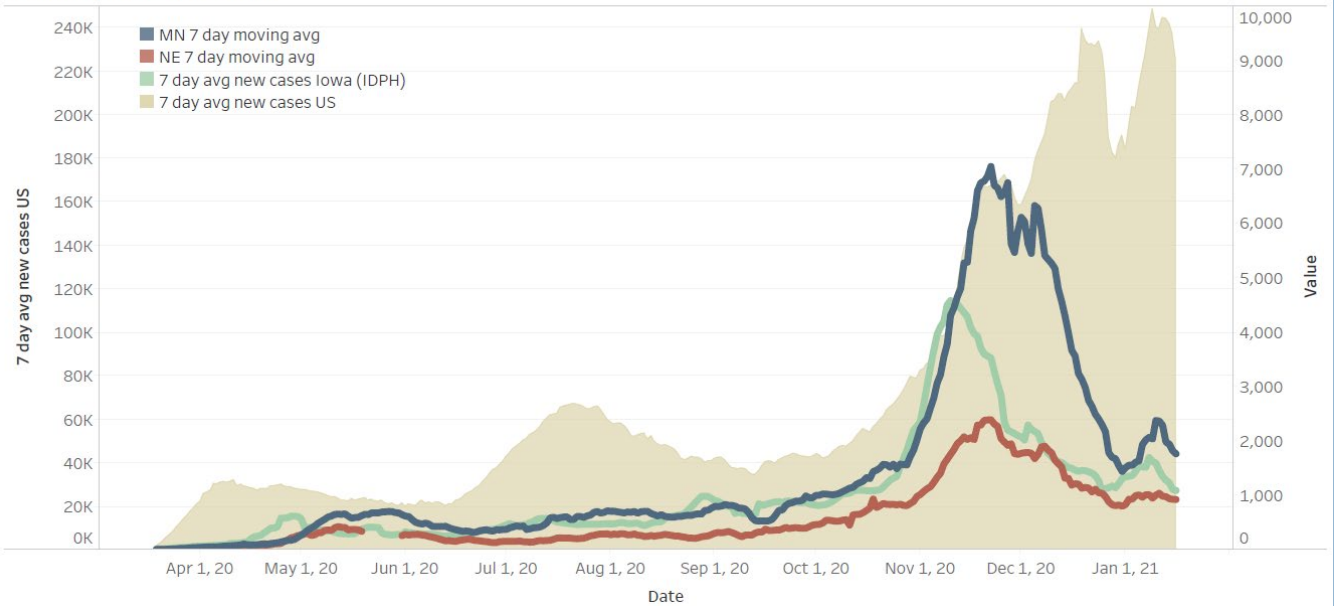
Central Iowa COVID19 Update



Polk County Activity View



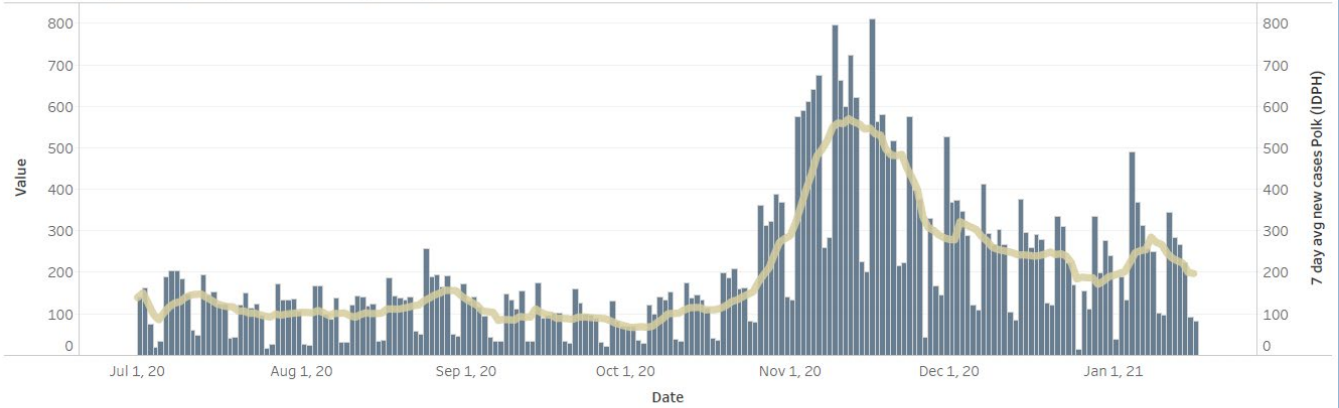
US and Border State Cases



Central Iowa COVID19 Update



Polk County Cases by Day and 7d Moving Average



Iowa Cases by Day and 7d Moving Average

